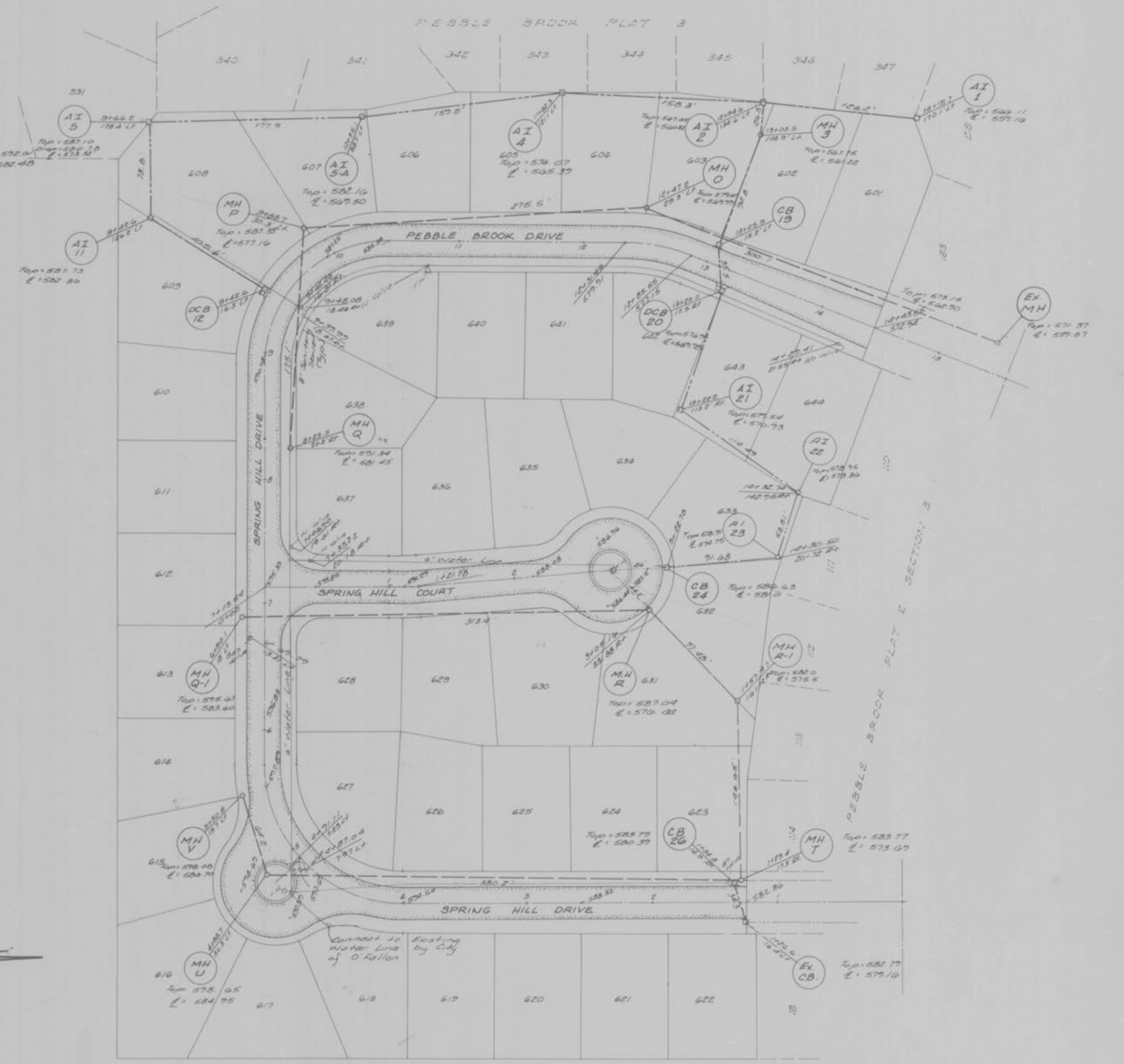
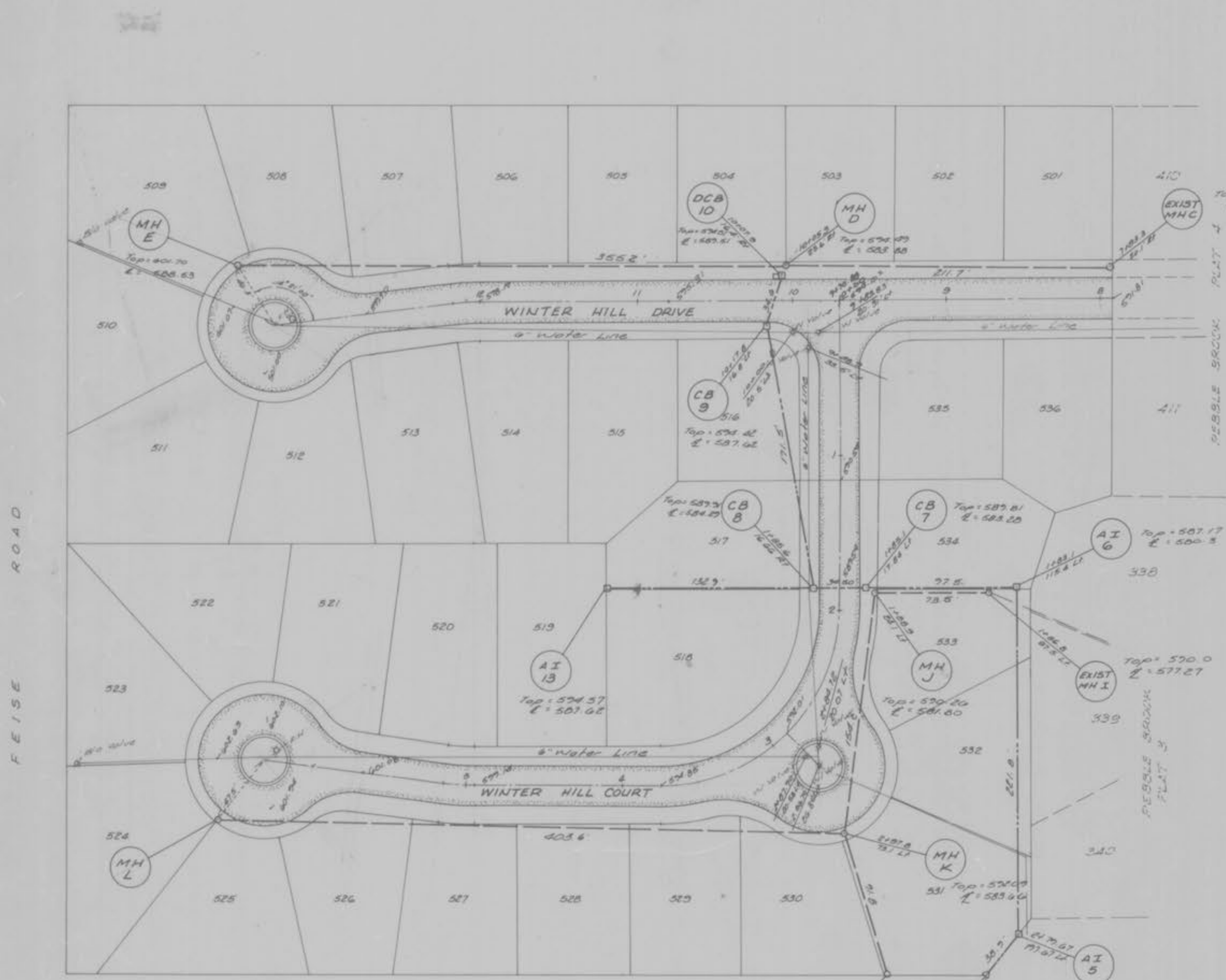


PEBBLE BROOK - PLATS 5A, 5B, 6



LATERAL LOCATIONS

| PLAT 5-A | PLAT 5-B | PLAT 6 | PLAT 6 |
|-----------------|-----------------|-----------------|-----------------|
| MH C to MH D | MH I to MH J | MH N-1 to MH O | MH R-1 to MH R |
| Lot 501 0+21 Rt | Lot 534 0+19 Rt | Lot 644 0+03 Lt | Lot 632 0+25 Rt |
| 536 0+23 Lt | 533 0+20 Lt | 601 0+04 Rt | 631 0+64 Lt |
| 535 1+15 Lt | | 643 0+55 Lt | |
| 502 1+20 Rt | MH J to MH K | 602 0+69 Rt | MH R to MH Q-1 |
| 502 1+64 Rt | Lot 517 0+16 Rt | 642 1+39 Rt | Lot 633 0+16 Rt |
| | 518 0+54 Rt | 603 1+45 Rt | 634 0+17 Rt |
| MH D to MH E | 532 0+81 Lt | | 630 0+56 Lt |
| Lot 516 0+17 Lt | 531 1+46 Lt | MH O to MH P | 635 0+70 Rt |
| 506 0+450 Rt | | Lot 604 0+13 Rt | 636 1+36 Rt |
| 505 0+94 Rt | MH K to MH L | 641 0+39 Lt | 629 1+37 Lt |
| 515 1+06 Lt | Lot 530 0+16 Lt | 605 0+76 Rt | 628 2+78 Lt |
| 514 1+80 Lt | 529 0+83 Lt | 640 1+04 Lt | 613 3+08 Lt |
| 506 1+87 Rt | 528 1+61 Lt | 606 1+55 Rt | 612 3+09 Rt |
| 507 2+34 Rt | 519 1+75 Rt | 639 1+82 Lt | |
| 513 2+62 Lt | 527 2+29 Lt | 607 2+32 Rt | MH T to MH U |
| 512 3+05 Lt | 520 2+55 Rt | | Lot 623 0+17 Rt |
| 508 3+37 Rt | 526 3+09 Lt | MH P to MH Q | 622 0+18 Lt |
| 511 3+48 Lt | 521 3+22 Rt | Lot 608 0+03 Rt | 621 0+67 Lt |
| 510 3+50 Lt | 525 3+75 Lt | 609 0+66 Rt | 624 0+81 Rt |
| 509 3+52 Lt | 522 3+89 Rt | 610 1+18 Rt | 620 1+25 Lt |
| | 524 3+90 Rt | 638 1+19 Lt | 625 1+60 Rt |
| | 523 3+91 Rt | 611 1+71 Rt | 619 2+13 Lt |
| | | 637 1+72 Lt | 626 2+27 Rt |
| | | | 618 2+80 Lt |
| | | | 627 3+07 Rt |
| | | | 617 3+59 Lt |
| | | | 616 3+73 Lt |
| | | MH U to MH V | |
| | | Lot 615 0+06 Lt | |
| | | 614 0+58 Lt | |



MO. STATE HWY "K"

PROPERTY OF
CITY OF D'ARLON
BUILDING DEPARTMENT

| CIVIL ENGINEER | REV. DATE | DESCRIPTION | BY | CHKD. |
|--|-----------|-----------------------|------|--------|
| P. Kelly | | | | |
| R. B. Silver, Inc. | | | | |
| | | A5-BUILT | | |
| | | Sanitary Sewer, Storm | | |
| | | Sewer & Water Line | | |
| 303 MO RIVER DRIVE 228-0211 ST. PETERS, MO 65759 441-0211 | | | | |
| DRAWN BY | DATE | CHECKED BY | DATE | 82-046 |

PEBBLE BROOK - PLATS 5A, 5B, 6
A5-BUILT