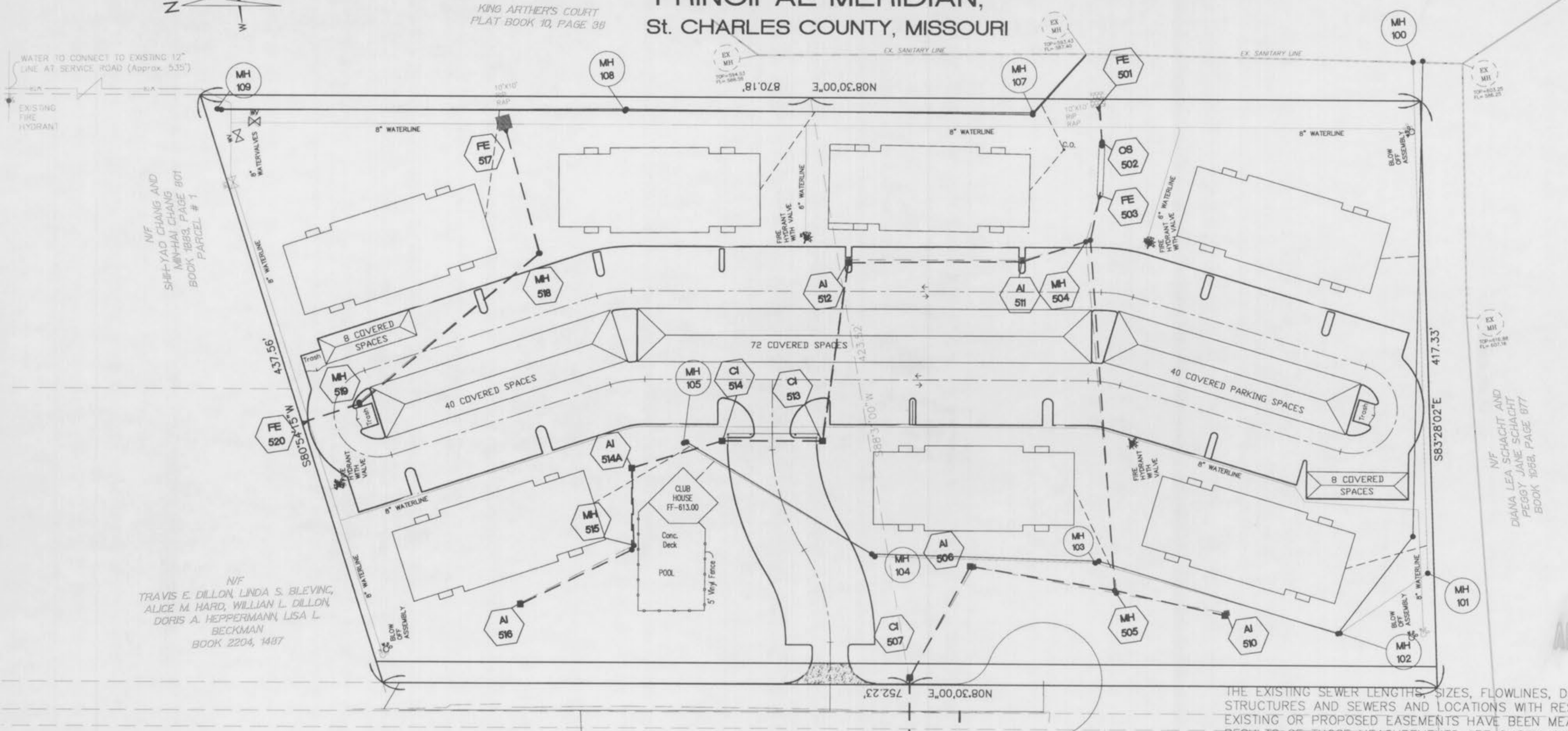
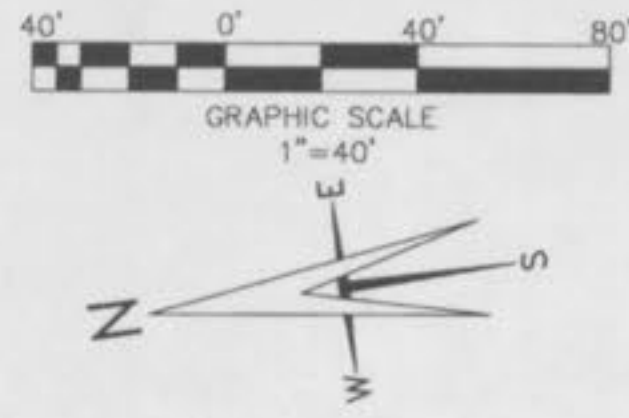


**AS-BUILT PLANS FOR  
PUND PLACE  
A TRACT OF LAND BEING PART OF  
US SURVEY 55 TOWNSHIP 47 NORTH,  
RANGE 3 EAST OF THE FIFTH  
PRINCIPAL MERIDIAN,  
St. CHARLES COUNTY, MISSOURI**



**BENCHMARKS**  
60531 - Missouri Department of Natural Resources Monument. Standard DNR QRS aluminum disk stamped "90-46 2000". Monument is located South-west of the intersection of Felse Road and Glen Estates Drive. 27' South of Glen Estates Drive Centerline and 38' West of Felse Road Centerline.  
Site Benchmark:  
62515 - Old Iron Pipe Located on the West Side of Pund Road 14.01' South of the Northern Property Line and 45.05' West of the Western Property Line near a power pole.

THE UNDERGROUND UTILITIES SHOWN HEREIN WERE PLOTTED FROM AVAILABLE INFORMATION AND DO NOT NECESSARILY REFLECT THE ACTUAL EXISTENCE OR NONEXISTENCE, SIZE, TYPE, NUMBER OR LOCATION OF THESE OR OTHER UTILITIES. THE GENERAL CONTRACTOR SHALL BE RESPONSIBLE FOR VERIFYING THE ACTUAL LOCATION OF ALL UNDERGROUND UTILITIES, SHOWN OR NOT SHOWN, AND SAID UTILITIES SHALL BE LOCATED IN THE FIELD PRIOR TO ANY GRADING, EXCAVATION OR CONSTRUCTION OF IMPROVEMENTS. THESE PROVISIONS SHALL IN NO WAY ABSOLVE ANY PARTY FROM COMPLYING WITH THE UNDERGROUND FACILITY SAFETY AND DAMAGE PREVENTION ACT, CHAPTER 319, RSMO.

THE EXISTING SEWER LENGTHS, SIZES, FLOWLINES, DEPTHS OF STRUCTURES AND SEWERS AND LOCATIONS WITH RESPECT TO EXISTING OR PROPOSED EASEMENTS HAVE BEEN MEASURED. THE RESULTS OF THOSE MEASUREMENTS ARE SHOWN ON THIS SET OF AS-BUILT PLANS. UPON INSPECTION OF ALL STRUCTURE, THERE IS AT LEAST A 0.2 FOOT DROP BETWEEN THE FLOW LINE IN AND FLOW LINE OUT OF ALL AS BUILT STRUCTURES ON THIS SET OF PLANS. SINCE THE WYE LOCATIONS HAVE BEEN PLOTTED FROM INFORMATION PROVIDED BY THE SEWER CONTRACTOR OR OTHER SOURCES, I DISCLAIM ANY RESPONSIBILITY FOR THAT SPECIFIC INFORMATION.

ST. CHARLES ENGINEERING AND SURVEYING, INC.

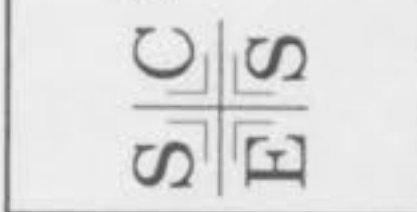
*Michael Newell Meiners* 2/11/04  
MICHAEL NEWELL MEINERS  
MISSOURI PROFESSIONAL ENGINEER NUMBER E-22483



REVISED AS PER CITY COMMENTS  
02/10/04

**PUND PLACE  
AS-BUILTS FOR  
FLAT PLAN**

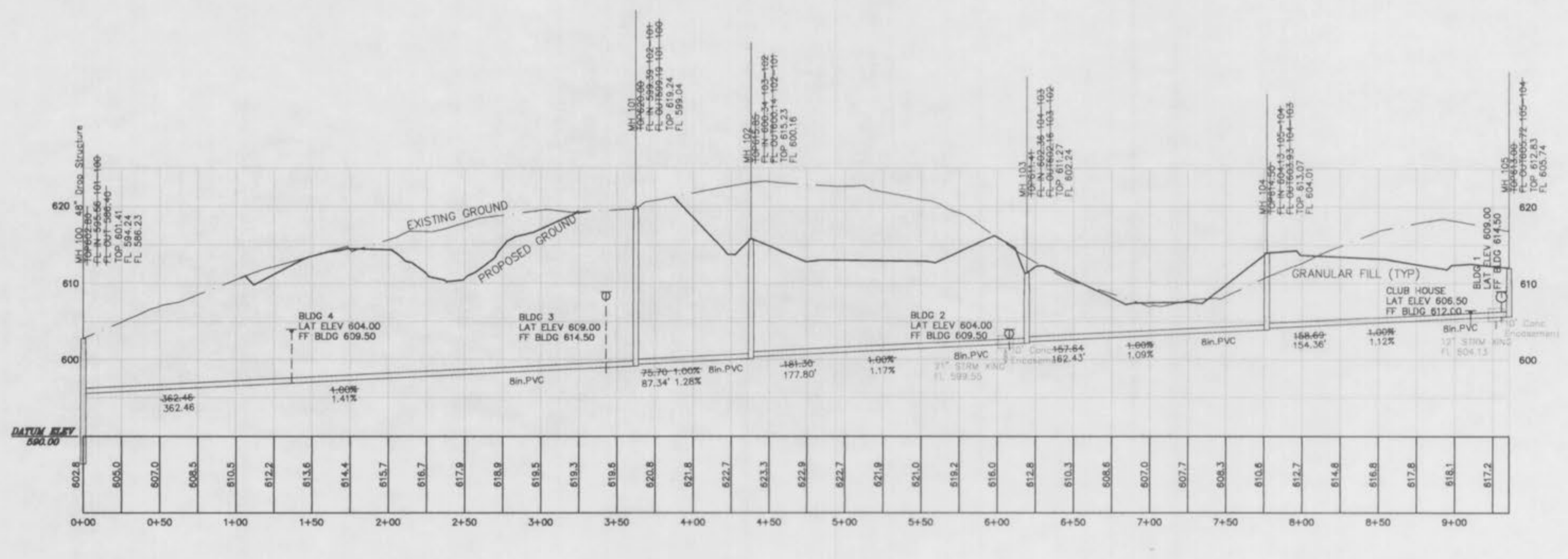
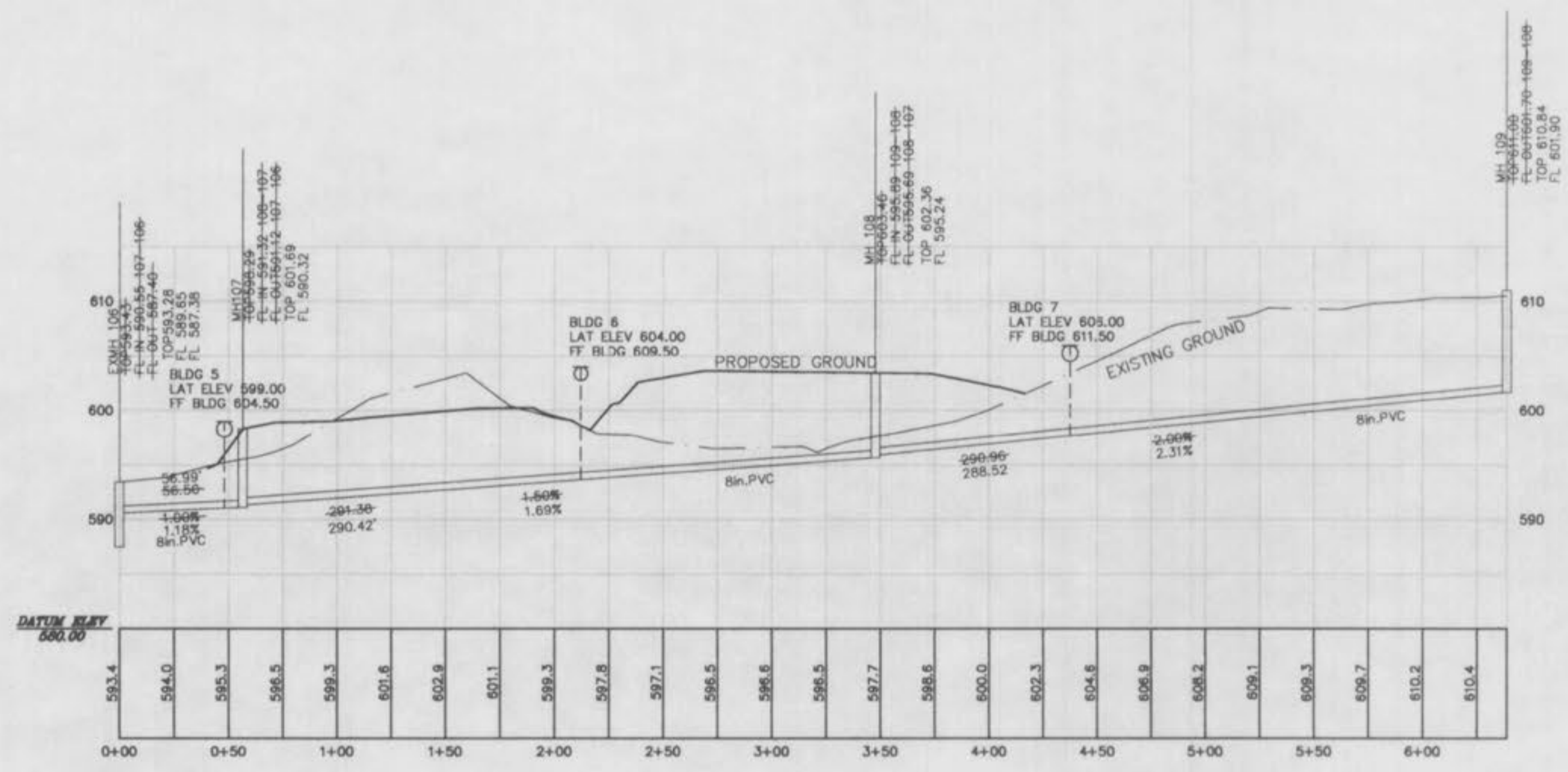
**ST. CHARLES ENGINEERING & SURVEYING, INC.**  
801 S. FIFTH STREET, SUITE 202  
ST. CHARLES, MO 63301  
TEL: (636) 947-0607 FAX: (636) 947-2448



ORDER NO.	20-0169-01
DATE	10/16/03
	1

Approved By: Frank Godwin PUND PLACE AS-BUILTS 02112104





1" = 10'  
VERT.  
1" = 50'  
HORIZ.  
SCALE:

PUND PLACE  
AS-BUILTS FOR  
SANITARY PROFILES

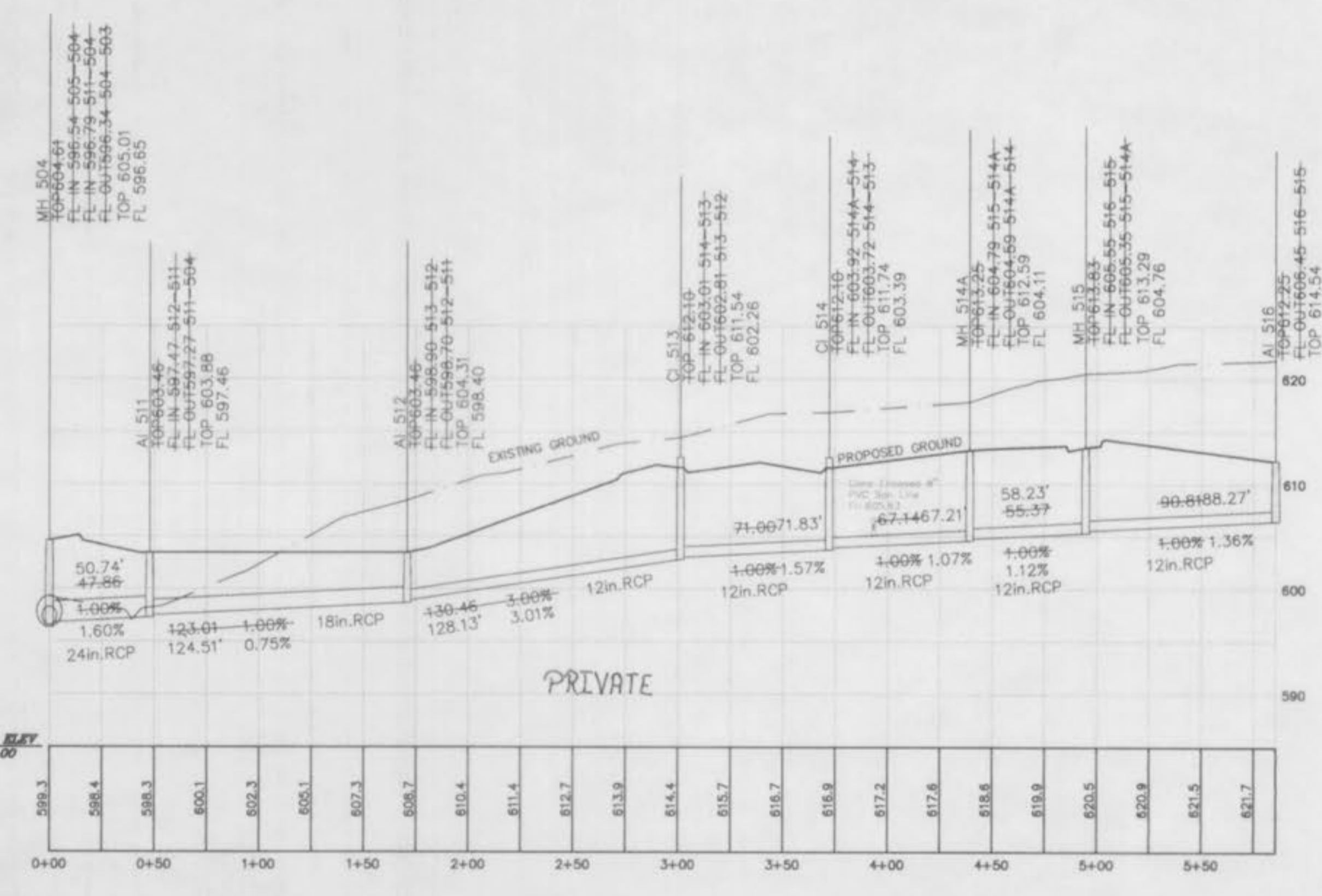
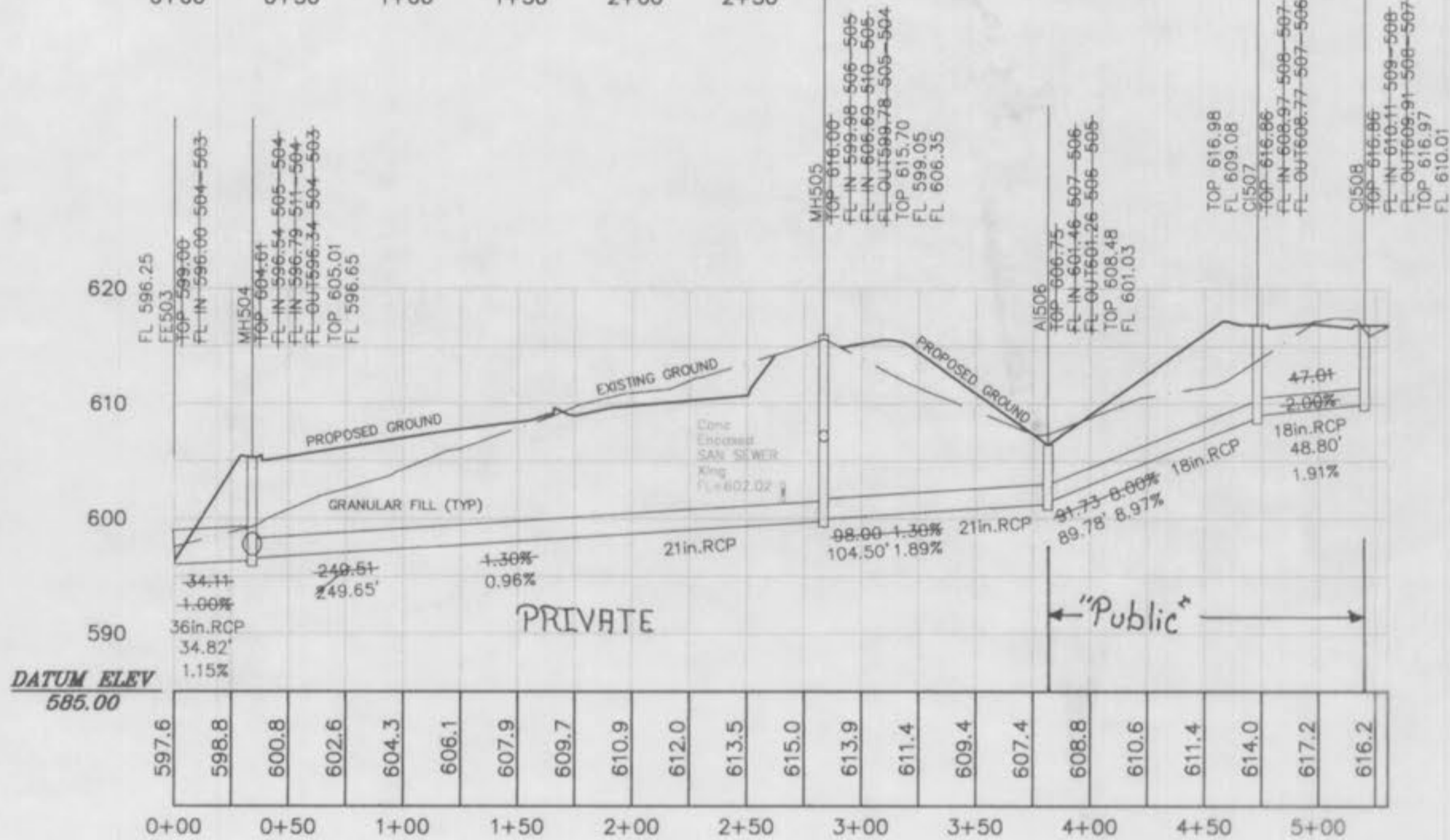
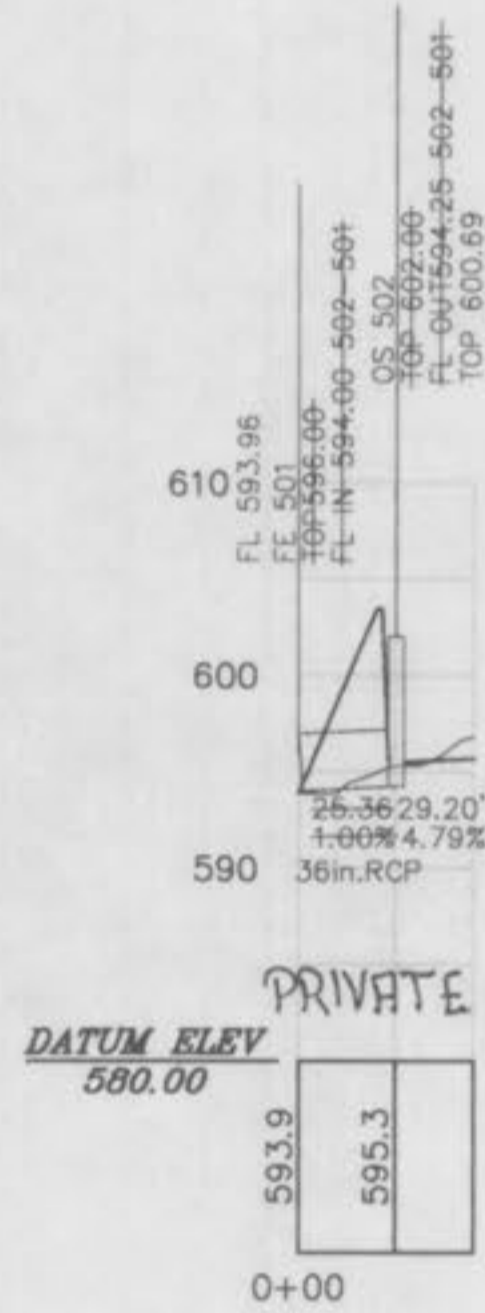
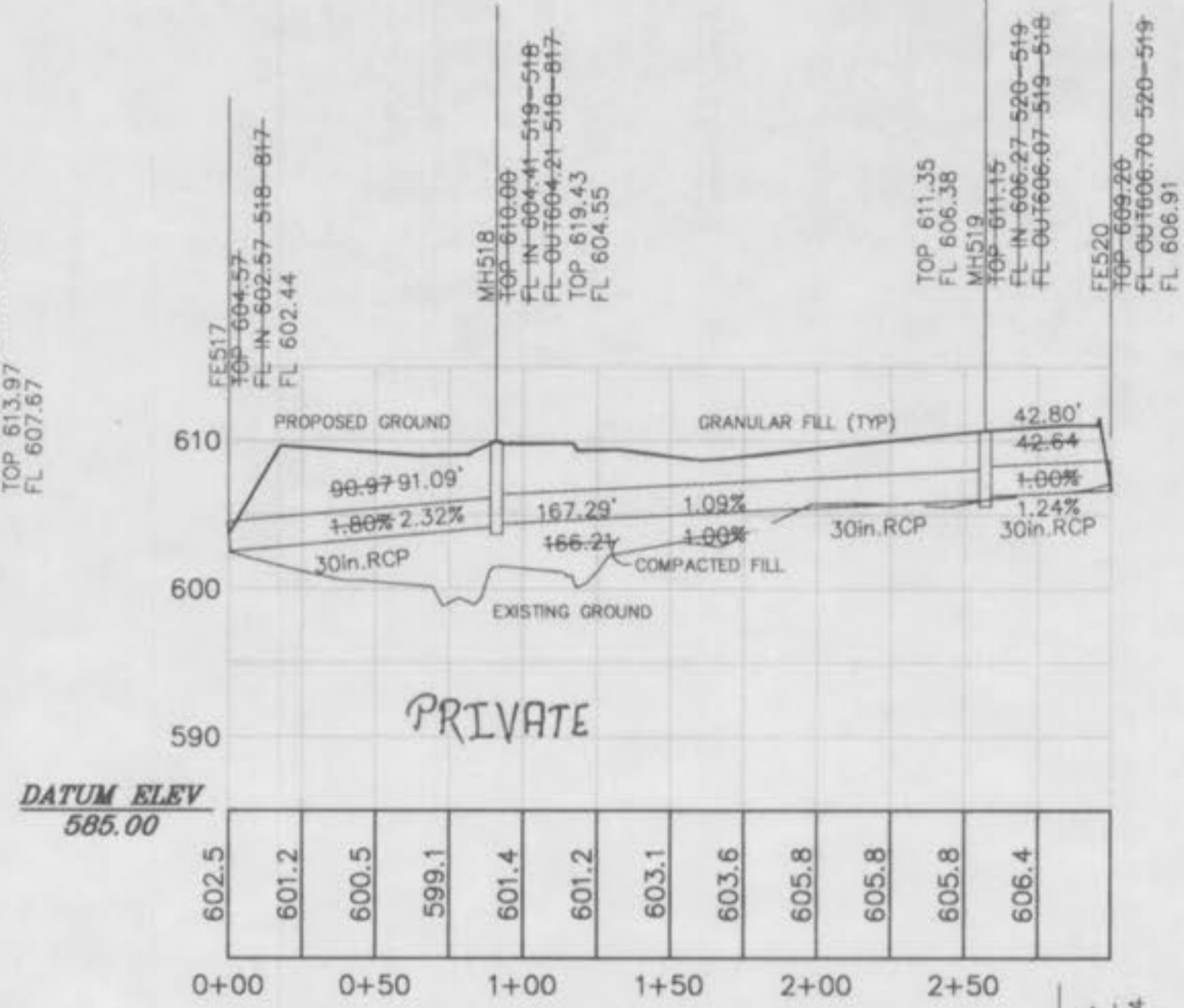
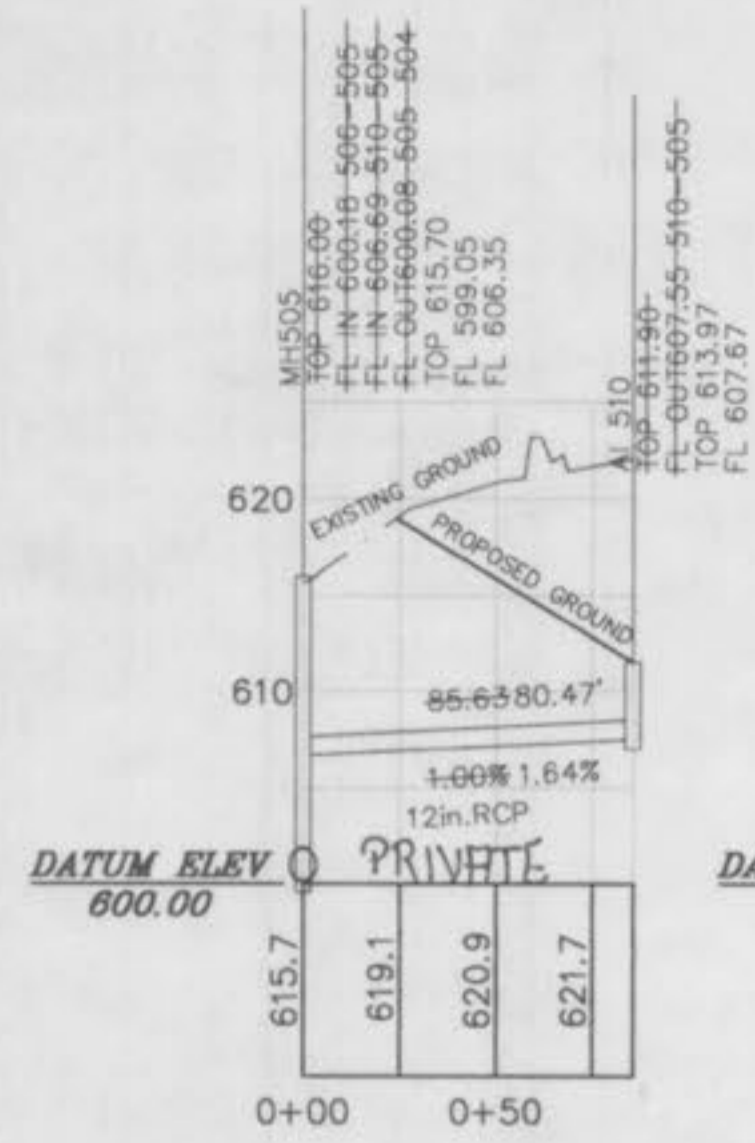
SIC ST. CHARLES ENGINEERING & SURVEYING, INC.  
801 S. FIFTH STREET, SUITE 202  
ST. CHARLES, MO 63301  
TEL: (636) 947-9007 FAX: (636) 947-2448



ORDER NO. 20-0169-01
DATE 10/16/03
2

PUND  
PLACE  
AS-BUILTS  
02/12/04

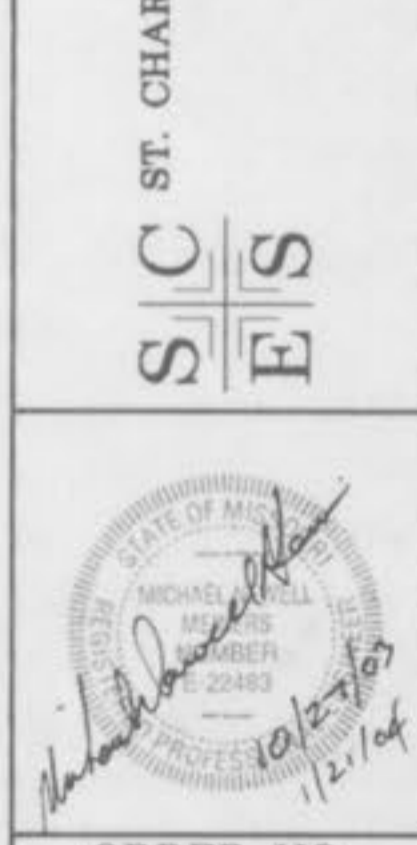




1" = 10' VERT.  
1" = 50' HORIZ.  
SCALE:

PUND PLACE  
AS-BUILTS FOR  
STORM PROFILES

ST. CHARLES ENGINEERING & SURVEYING, INC.  
801 S. FIFTH STREET, SUITE 202  
ST. CHARLES, MO 63301  
TEL: (636) 947-0607 FAX: (636) 947-2448



ORDER NO. 20-0169-01  
DATE 10/16/08  
3

PUND PLACE  
AS BUILTS  
02/12/04