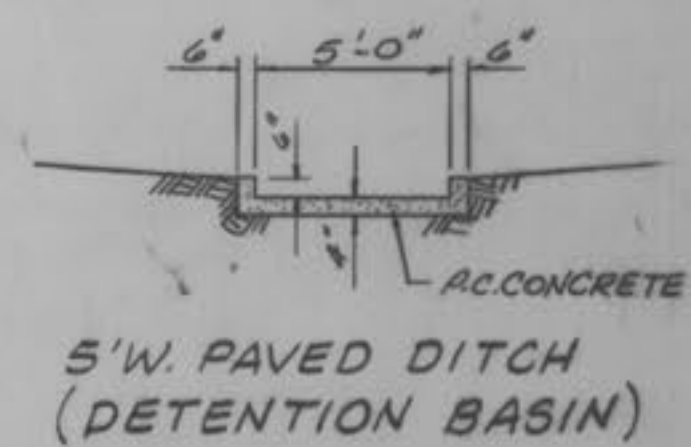
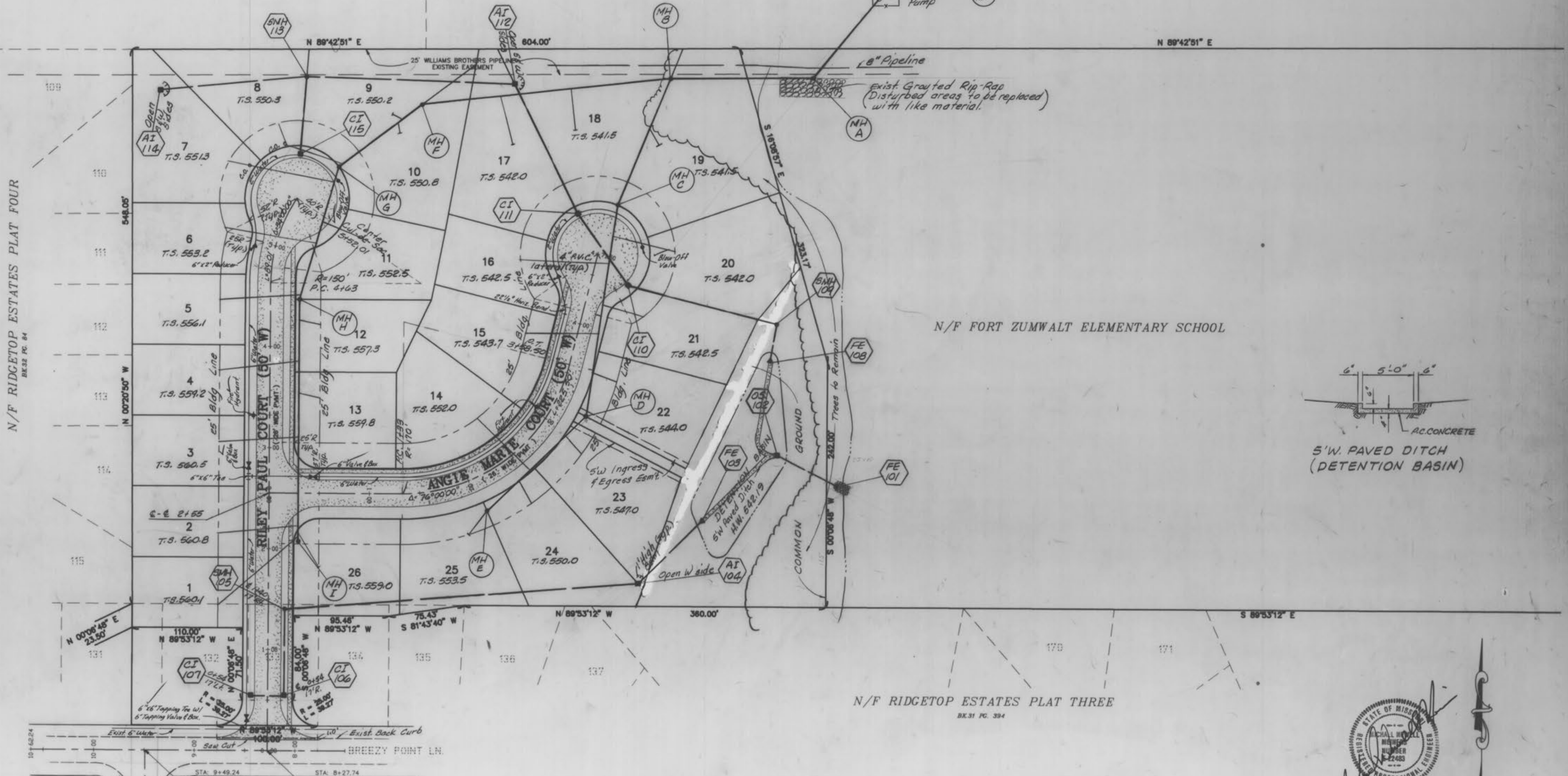


N/F WOODCREST PLAT TWO
BK 17 PG. 19 & 20

N/F BRANDYWINE ESTATES
BK 20 PG. 8



N/F RIDGETOP ESTATES PLAT THREE
BK 31 PG. 39A

The underground utilities shown herein were plotted from available information and do not necessarily reflect the actual existence, nonexistence, size, type, number, or location of these or other utilities. The general contractor shall be responsible for verifying the actual location of all underground utilities, shown or not shown, and said utilities shall be located in the field prior to any grading, excavation, or construction of improvements. These provisions shall in no way absolve any party from complying with the Underground Facility Safety and Damage Prevention Act, Chapter 319, RSMo.



SCALE=1"=50'

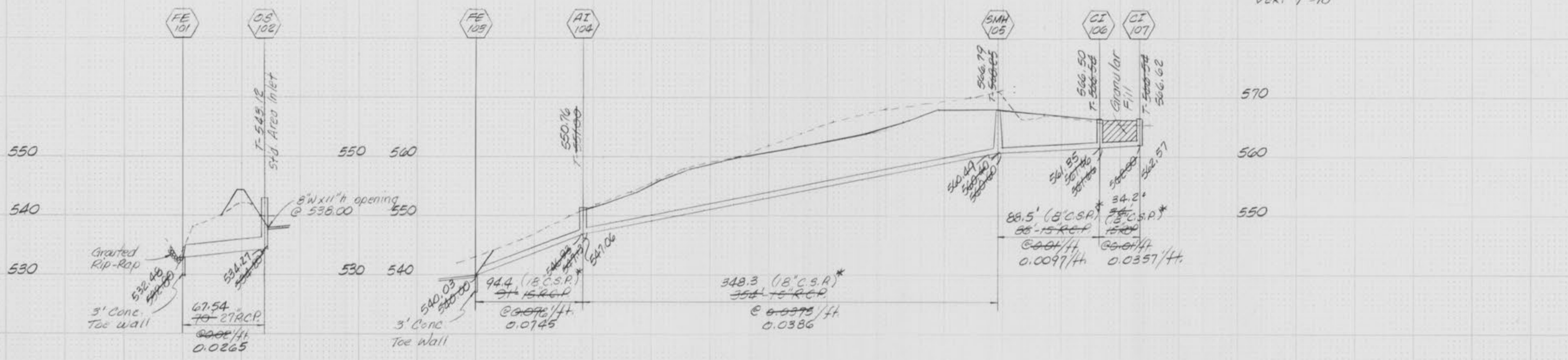
11-20-95 Sanitary, Storm & Water As-builts Added (profiles only)

REVISED	SHEET 2 OF 11
S/C	ST. CHARLES ENGINEERING & SURVEYING
E/S	801 S. FIFTH STREET, SUITE 202
	ST. CHARLES, MO 63301
	TEL: (314) 947-0807 FAX: (314) 947-3445
ORDER NO.	DATE
	12/5/94

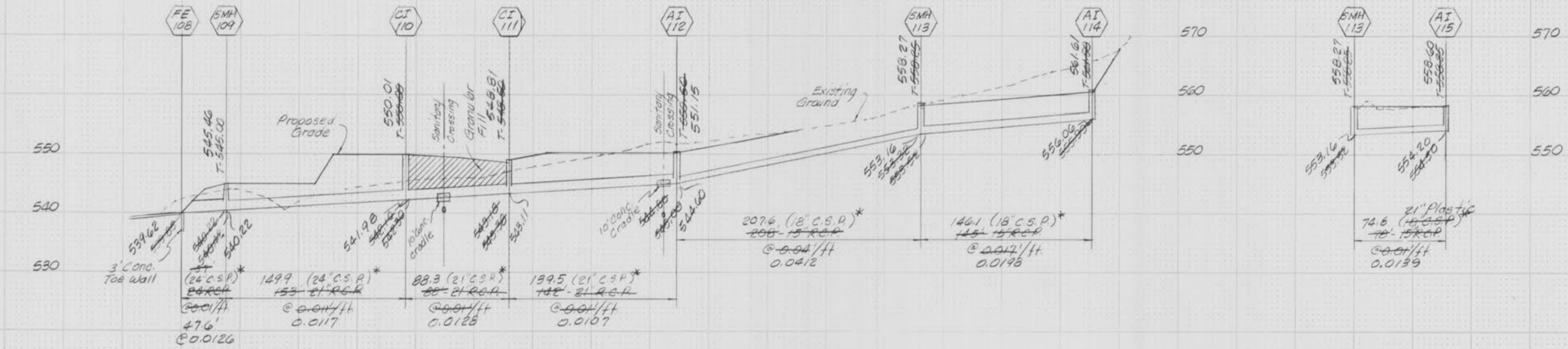
SCALE: HOR. 1"=50'
 VERT 1"=10'

DATE
 BY
 SURVEY
 FLIPPED
 TEMPLATE
 NOTE BOOK
 NO.
 AREAS CHECKED

DATE
 BY
 ORIGINAL
 SURVEY
 FLIPPED
 TEMPLATE
 NOTE BOOK
 NO.
 AREAS CHECKED



FE 101 to QS 102 to be built with the initial grading operation to function as cutfall for siltation basin. 8'x11' h opening to be covered with synthetic filter barrier (Mirafi 100x or equal) to function as sediment control during construction.



* Optional Corrugated Steel Pipe (Helical only)

Storm As-builts added 11-20-95