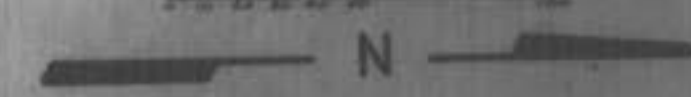


"AS - BUILTS"

Scale: 1" = 50'



SEWER DESIGN SHEET A

| LINE | IN | OUT | FL | FT | REMARKS |
|------|-----|-----|--------|--------|----------------|
| 100 | 12" | 12" | 100.00 | 100.00 | 100' Discharge |
| 101 | 12" | 12" | 99.50 | 99.50 | 100' Discharge |
| 102 | 12" | 12" | 99.00 | 99.00 | 100' Discharge |
| 103 | 12" | 12" | 98.50 | 98.50 | 100' Discharge |
| 104 | 12" | 12" | 98.00 | 98.00 | 100' Discharge |
| 105 | 12" | 12" | 97.50 | 97.50 | 100' Discharge |
| 106 | 12" | 12" | 97.00 | 97.00 | 100' Discharge |
| 107 | 12" | 12" | 96.50 | 96.50 | 100' Discharge |
| 108 | 12" | 12" | 96.00 | 96.00 | 100' Discharge |
| 109 | 12" | 12" | 95.50 | 95.50 | 100' Discharge |
| 110 | 12" | 12" | 95.00 | 95.00 | 100' Discharge |

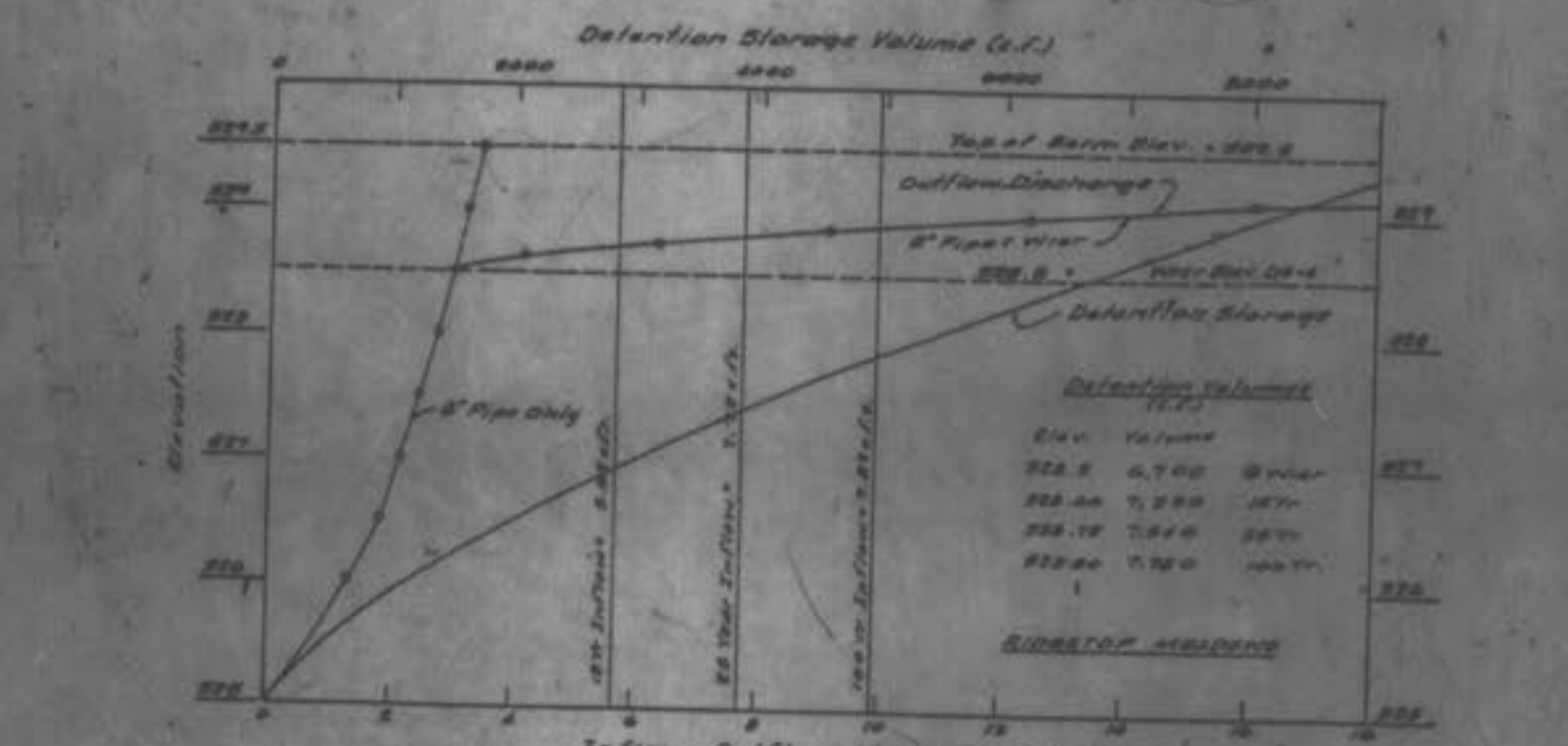
SEWER DESIGN SHEET B

| LINE | IN | OUT | FL | FT | REMARKS |
|------|-----|-----|-------|-------|----------------|
| 111 | 12" | 12" | 94.50 | 94.50 | 100' Discharge |
| 112 | 12" | 12" | 94.00 | 94.00 | 100' Discharge |
| 113 | 12" | 12" | 93.50 | 93.50 | 100' Discharge |
| 114 | 12" | 12" | 93.00 | 93.00 | 100' Discharge |
| 115 | 12" | 12" | 92.50 | 92.50 | 100' Discharge |
| 116 | 12" | 12" | 92.00 | 92.00 | 100' Discharge |
| 117 | 12" | 12" | 91.50 | 91.50 | 100' Discharge |
| 118 | 12" | 12" | 91.00 | 91.00 | 100' Discharge |
| 119 | 12" | 12" | 90.50 | 90.50 | 100' Discharge |
| 120 | 12" | 12" | 90.00 | 90.00 | 100' Discharge |

Retention Basins
 Retention Basin Requirements (20 Year)
 Differential Head:
 Submergence Head = 4.87 ft.
 Development Head = 2.86 ft/ft.
 Interstitial Head Factor = 2.81 ft/ft.
 Differential Head = 2.80 - 2.31 = 0.49 ft/ft.

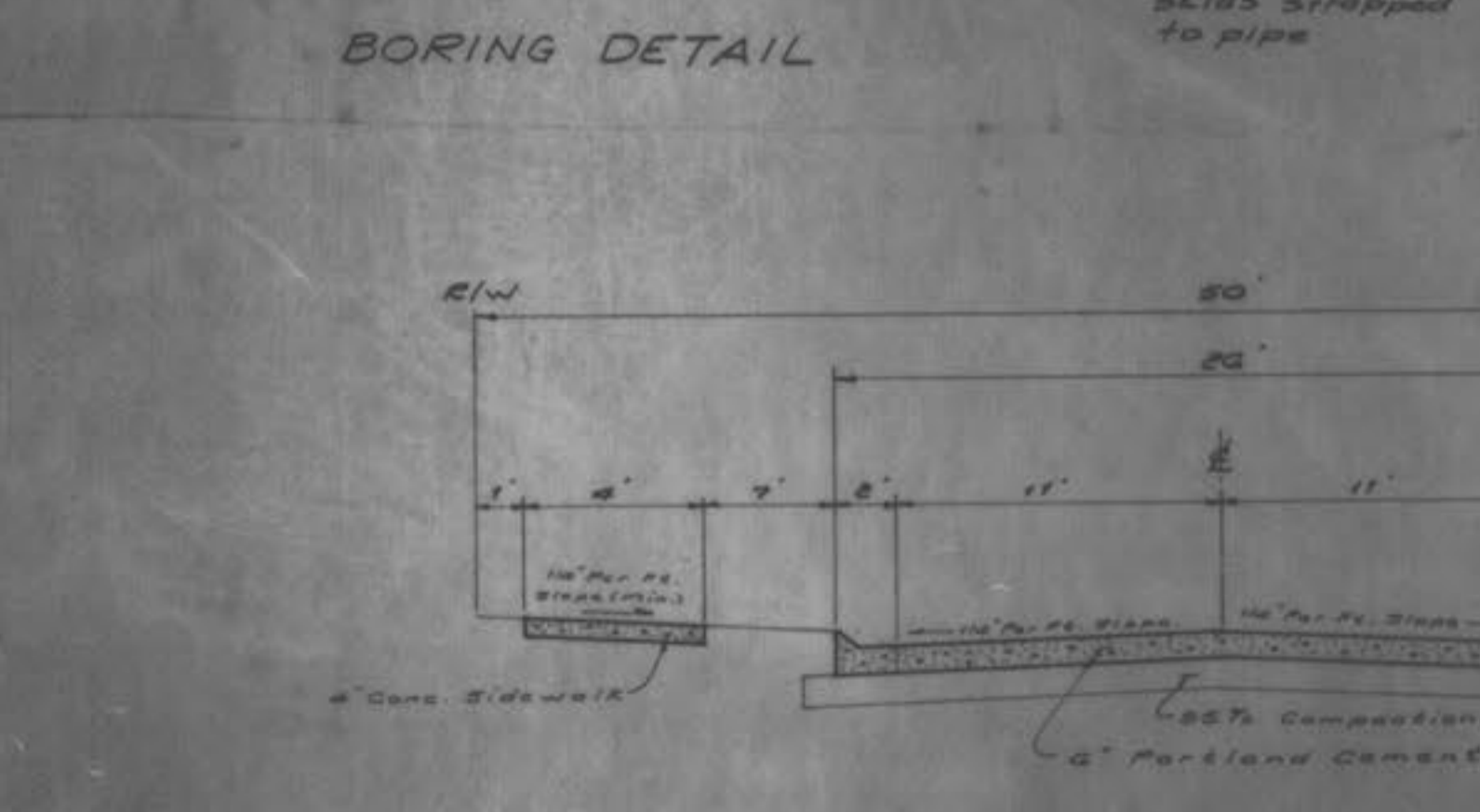
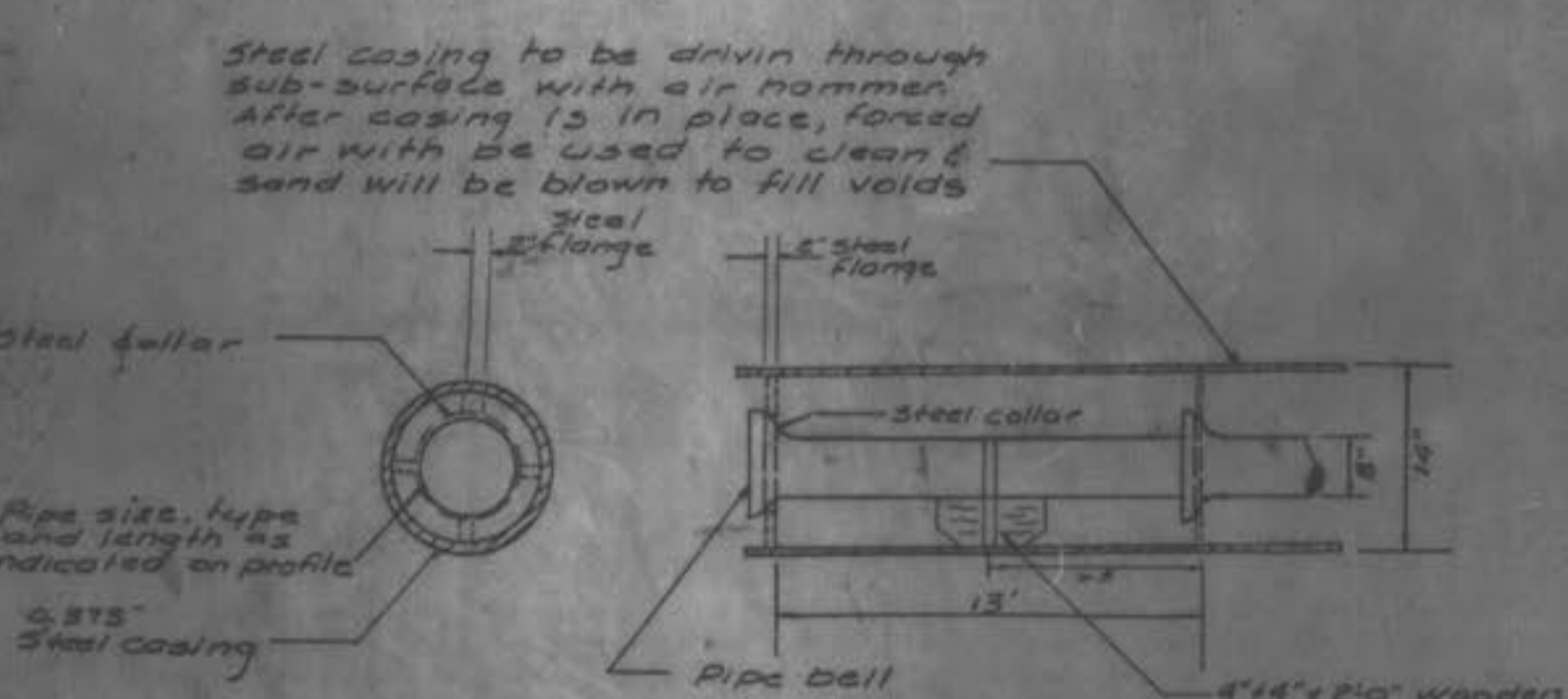
Storage Requirements
 For differential head:
 4.87 ft x 2.86 ft/ft x 1000 gal = 1392 gal (Required)
 For interstitial head:
 2.81 ft/ft x 1000 gal = 2810 gal (Required)
 Total Storage Required = 4202 gal

Allowable Discharge from Basin:
 Discharge to Basin (100%)
 1.18 ft x 2.86 ft/ft x 1000 gal = 3383 gal
 Discharge to Basin (25%)
 0.295 ft x 2.86 ft/ft x 1000 gal = 847 gal
 Discharge to Basin (100%)
 2.81 ft x 2.86 ft/ft x 1000 gal = 8026 gal
 Allowable Discharge (25%)
 0.727 ft x 2.86 ft/ft x 1000 gal = 2079 gal

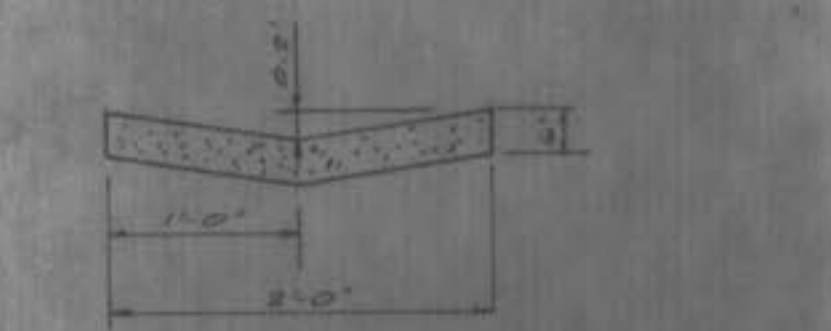
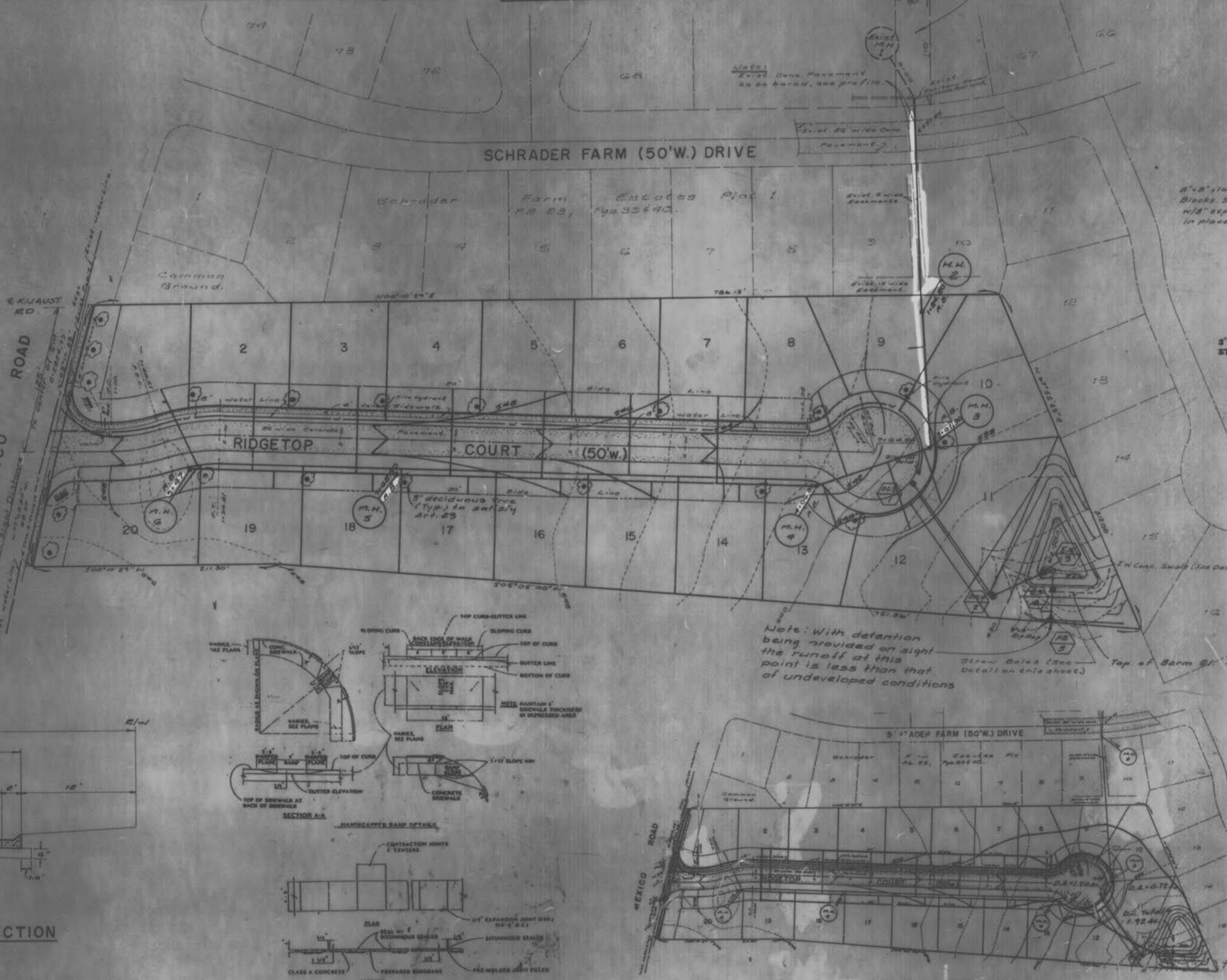


Inflow - Outflow Discharge (c.f.s.)

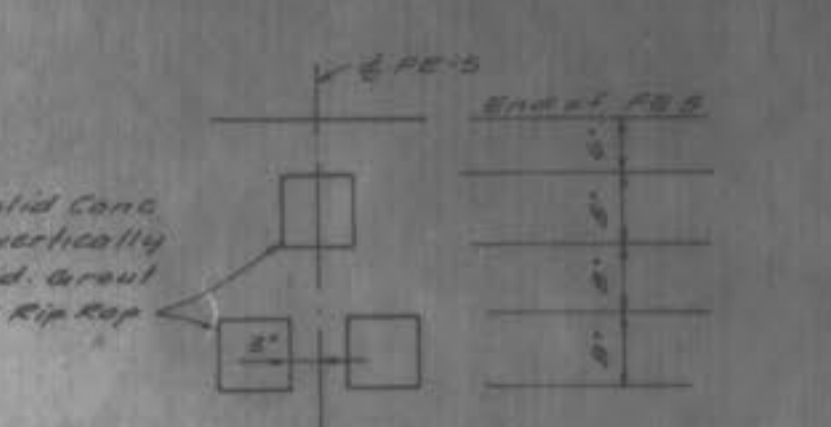
| Elev. | Area | Volume | Cum. Vol. |
|-------|------|--------|-----------|
| 222.0 | 0.00 | 0 | 0 |
| 222.5 | 1.00 | 1187 | 1187 |
| 223.0 | 2.00 | 4700 | 5887 |
| 223.5 | 3.00 | 8423 | 14310 |



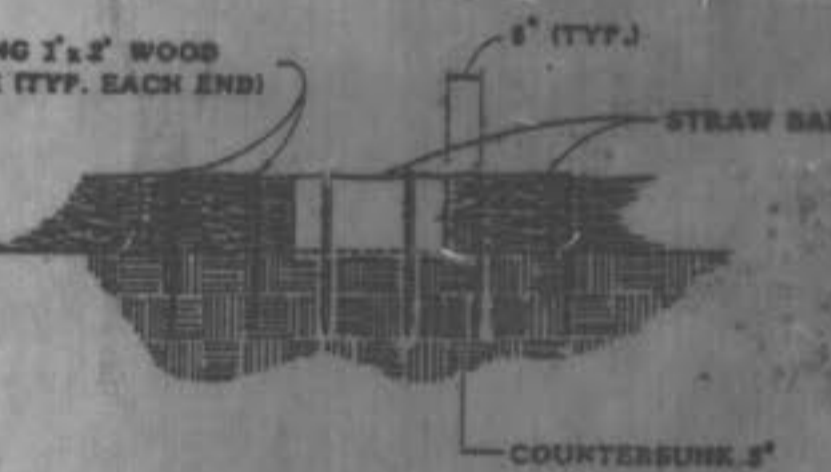
TYPICAL STREET CROSS SECTION



Concrete Swale
FE-3 to 8" PVC



Energy Dissipator @ FB-8

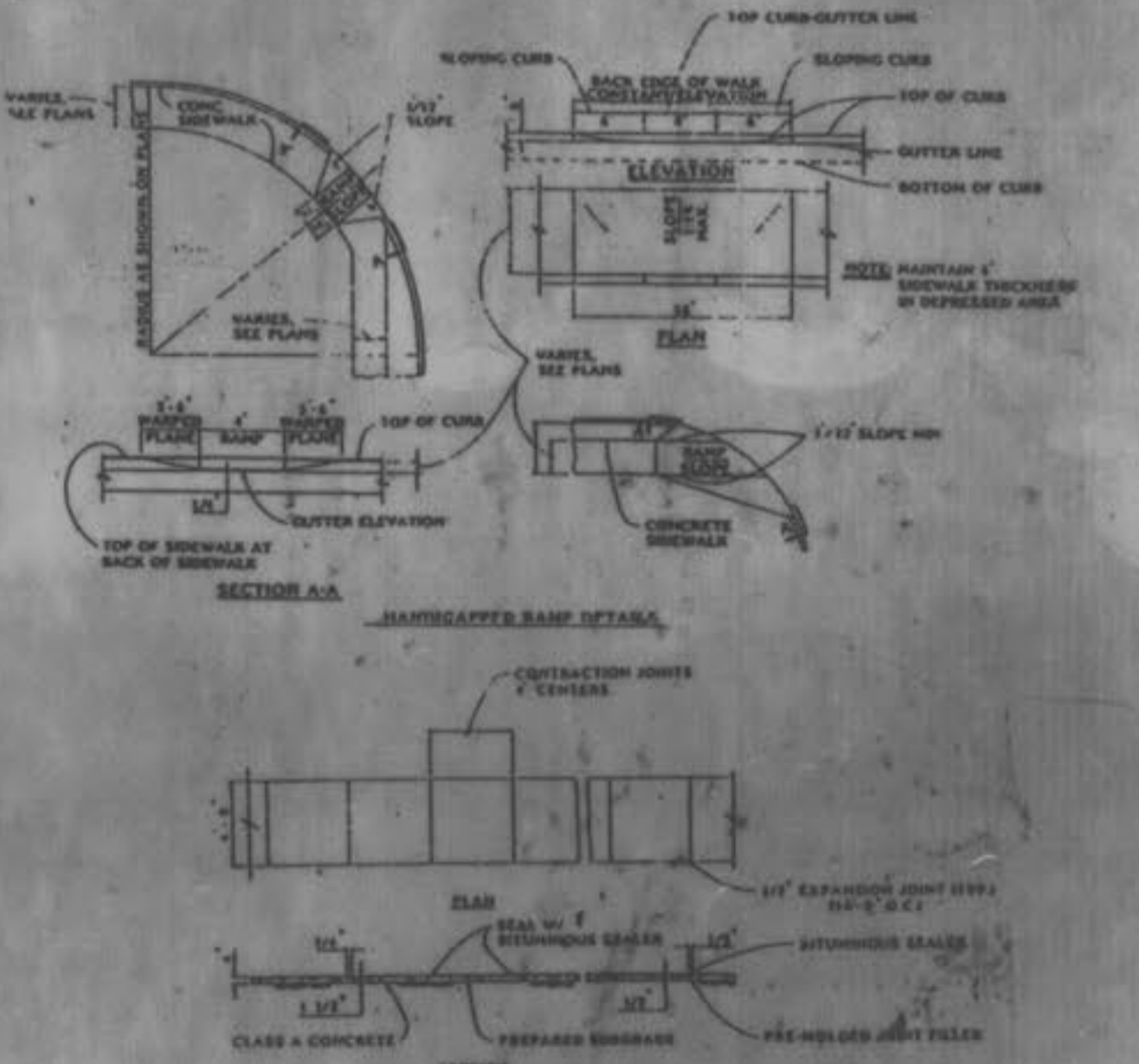


STAKED BALE DETAIL
N.T.S.

Note: With detention being provided on sight runoff at this point is less than that of undeveloped conditions.



Staked Bale Detail (See Detail on this sheet)



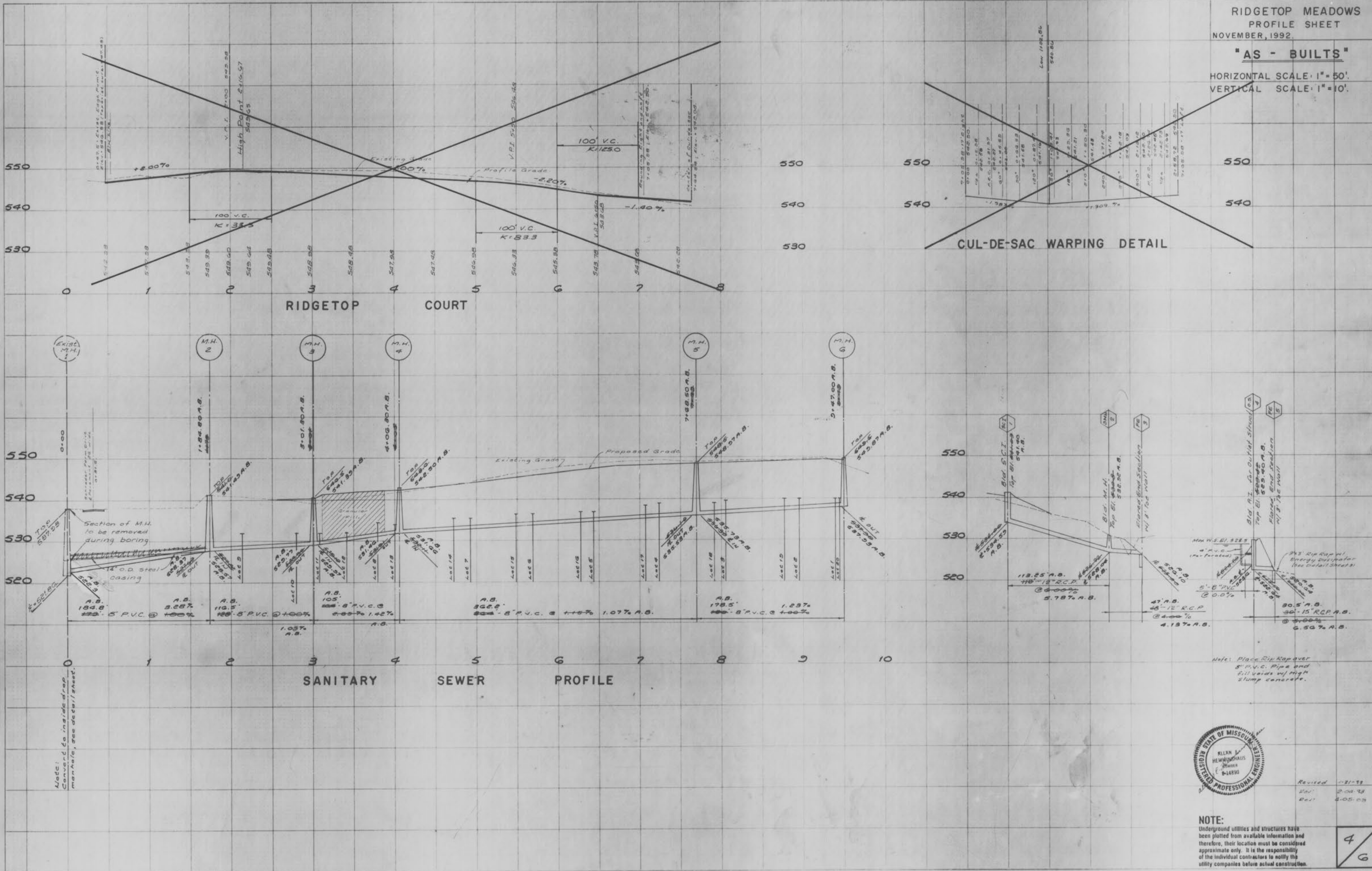
NOTE:
 Underground utilities and structures have been plotted using available information and therefore, their location must be considered approximate only. It is the responsibility of the individual contractor to verify the utility companies before actual construction.

"AS - BUILTS"

HORIZONTAL SCALE 1"=50'
VERTICAL SCALE 1"=10'

DATE: _____ BY: _____
FINAL SURVEY PLOTTED _____
NOTE BOOK NO. _____
AREAS CHECKED _____

DATE: _____ BY: _____
ORIGINAL SURVEY PLOTTED _____
NOTE BOOK NO. _____
AREAS CHECKED _____



Note: Convert to inside drop manholes, see detail sheet.

Note: Place Rip Rap over 8" P.V.C. Pipe and fill voids w/ high slump concrete.



Revised 11-21-92
Drawn 2-04-93
Rev. 8-05-93

NOTE:
Underground utilities and structures have been plotted from available information and therefore, their location must be considered approximate only. It is the responsibility of the individual contractors to notify the utility companies before actual construction.

4/6