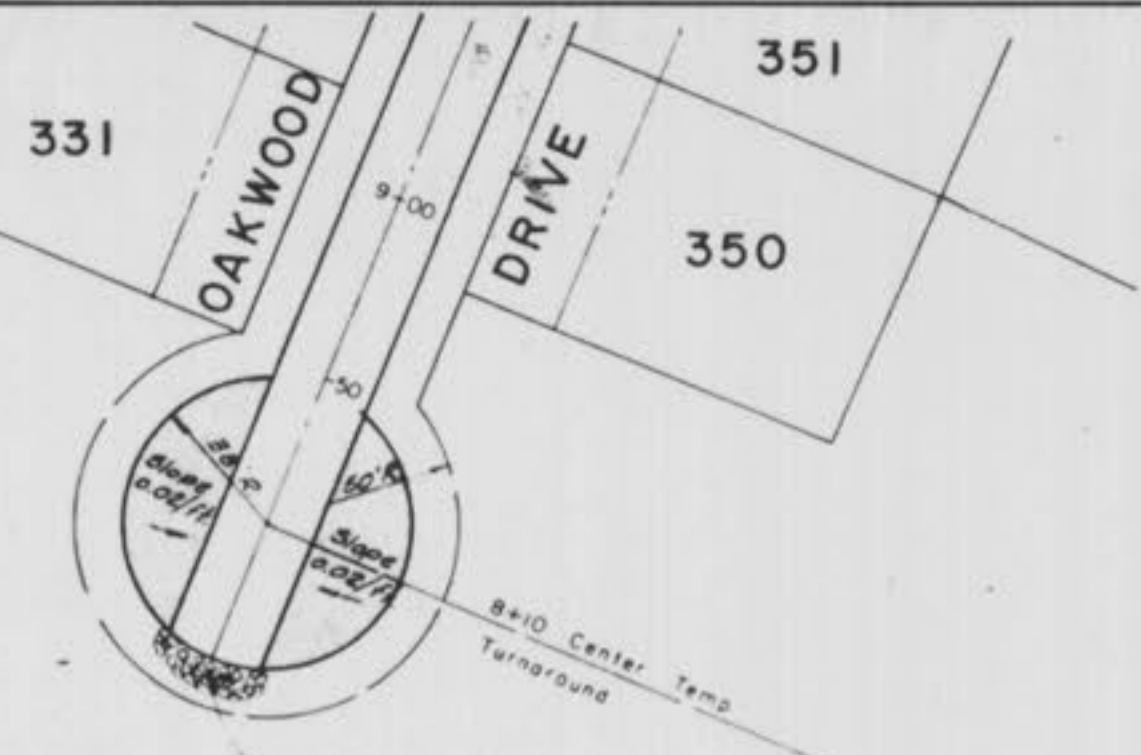


Scale 1" = 50'



FUTURE

DEVELOPMENT

STATE HIGHWAY

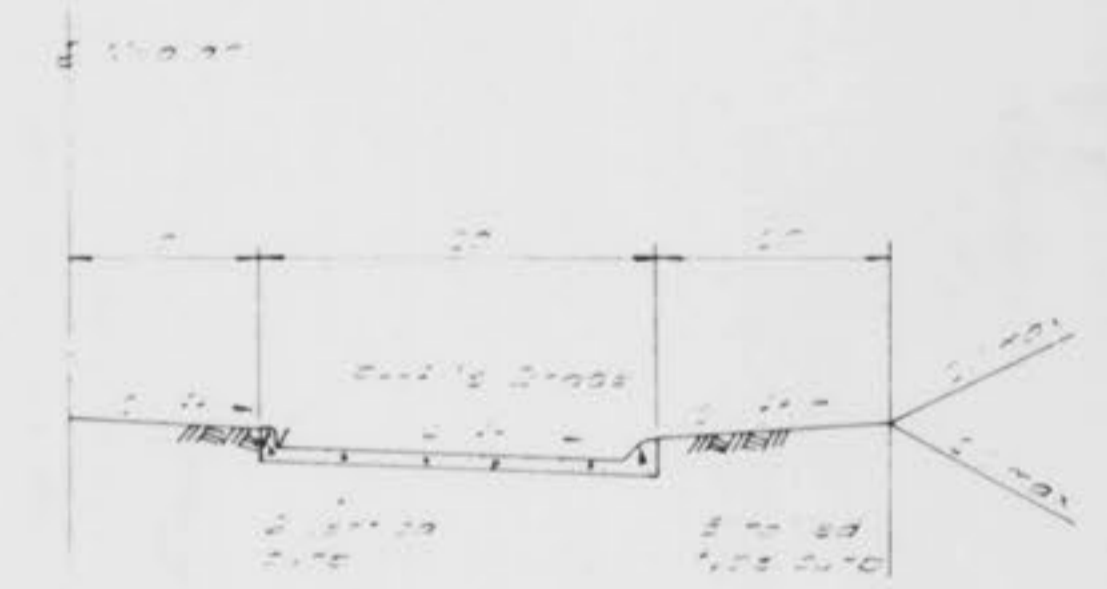


Sta 7+24.61, 21' Lt. Ex. Curb Inlet D

Sta 9+73, Manhole 3-A  
See sheets 1 of 2, and 2 of 2  
Royal Oaks Sub. Plot 1  
Water and Sewer Improve.

Sta 10+96, 28' Rt. Ex. Manhole 4

Sta 8+23, 28' Rt. Ex. Manhole 3



TYPICAL HALF-SECTION THRU ENTRANCE  
Not to Scale

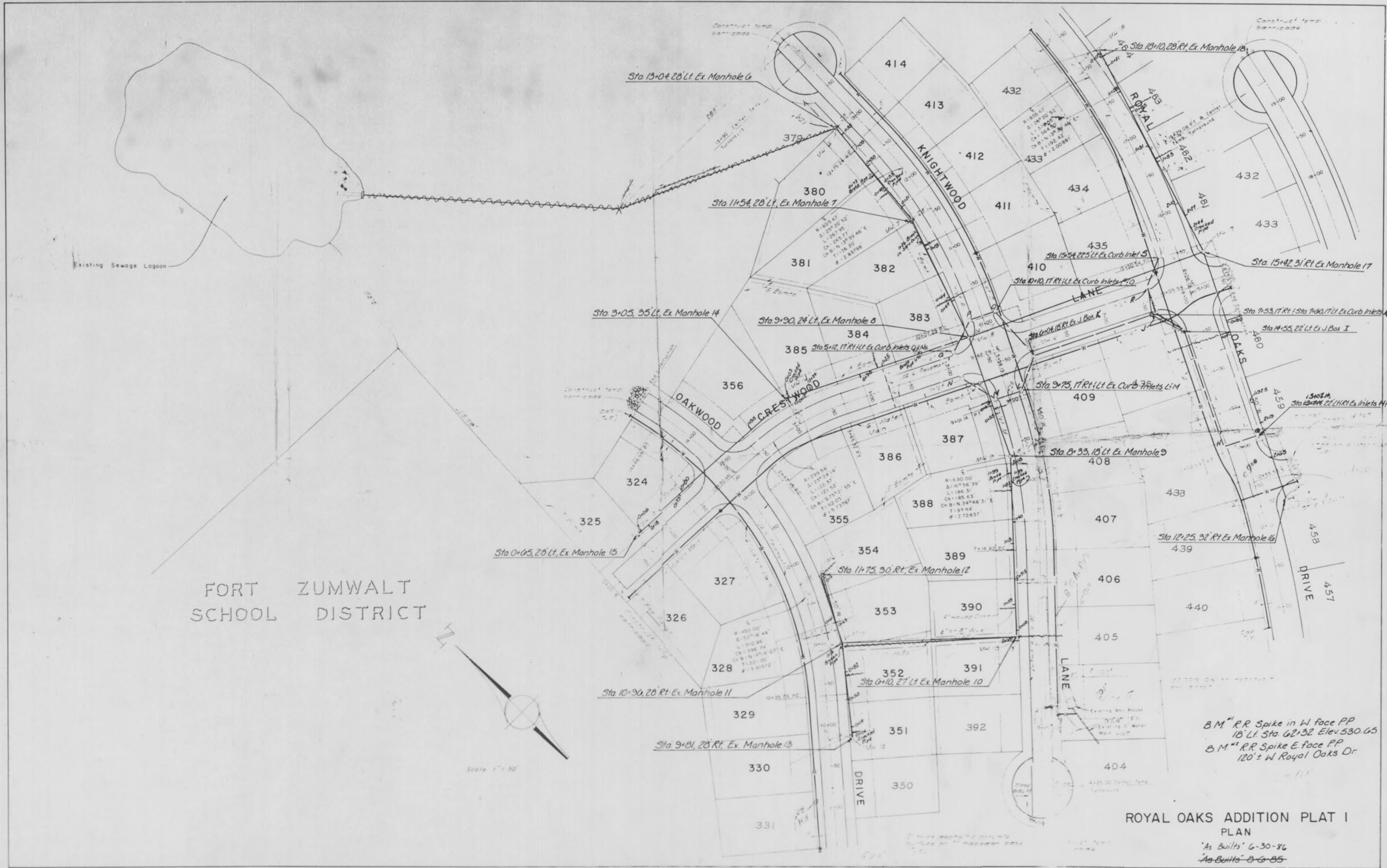
ROYAL OAKS ADDITION PLAT I  
PLAN  
"As Built" 6-30-86  
"As Built" Aug 85

Sheet 2 of 13 Sheets

PROPERTY OF  
CITY OF STALLON  
BUILDING DEPARTMENT

ROYAL OAKS ADDITION PLAT I  
PLAN  
AS BUILT

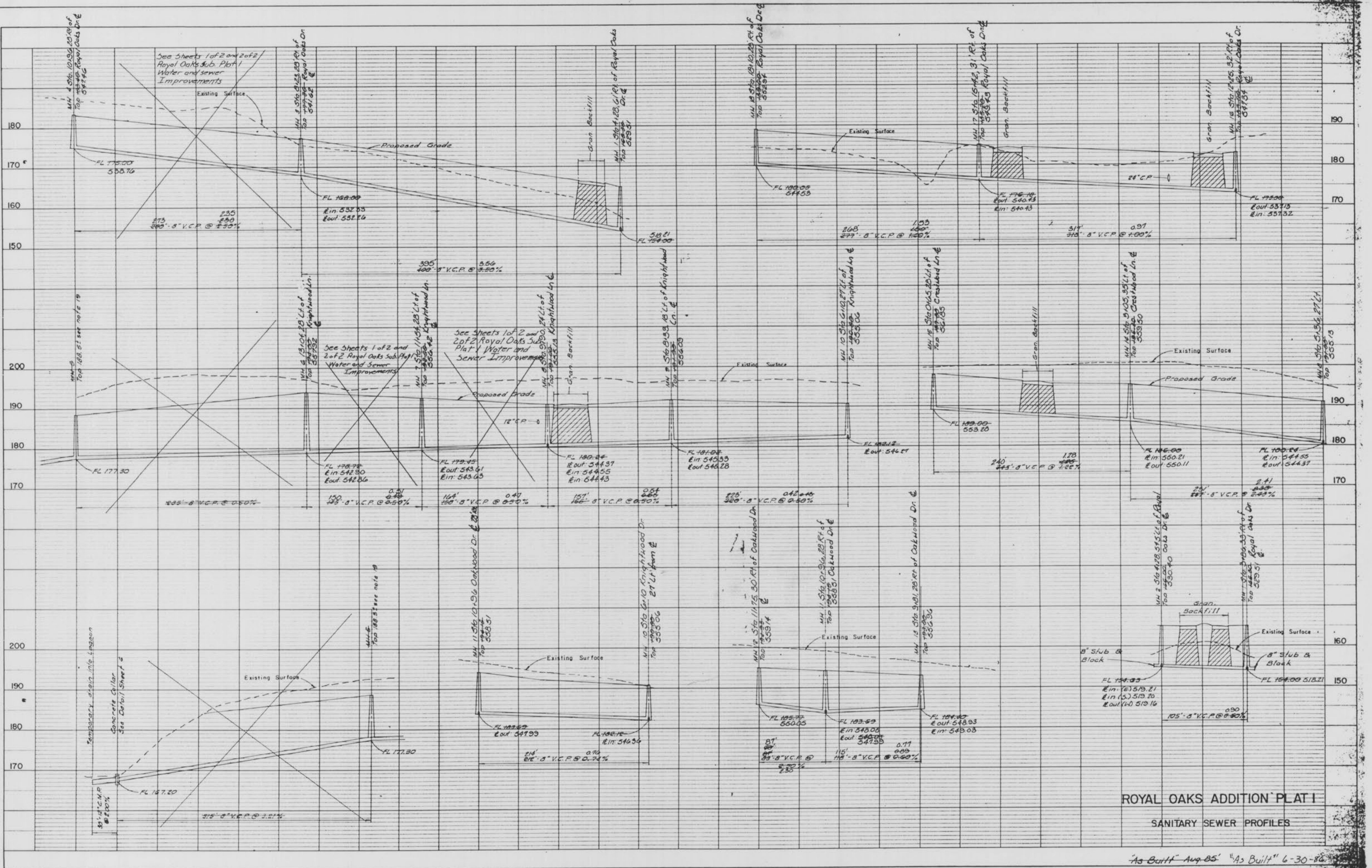
Royal Oaks



B.M. RR Spike in W face PP  
18' Lt. Sta 62+32 Elev 530.65  
B.M. RR Spike E. face PP  
120' W Royal Oaks Dr

I, J. H. ILLI, ENGINEER  
 LICENSE NO. 1015  
 PLOTTED  
 GRADES CHECKED  
 BY: [Signature]  
 STRUCTURE NOTATIONS CHECKED  
 BY: [Signature]

I, J. H. ILLI, ENGINEER  
 LICENSE NO. 1015  
 PLOTTED  
 GRADES CHECKED  
 BY: [Signature]  
 STRUCTURE NOTATIONS CHECKED  
 BY: [Signature]



**ROYAL OAKS ADDITION PLAT I**  
**SANITARY SEWER PROFILES**

"As Built" Aug 85 "As Built" 6-30-86

PLATE 5-FULL PROFILE-SHEETED  
 MADE AND PRINTED IN U.S.A.  
 NATIONAL TRACING PAPER DIVISION  
 I.P.P.A. 20-200

Sheet 5 of 13 Sheets

PROPERTY OF  
 CITY OF PLYMOUTH  
 BUILDING DEPARTMENT  
 ROYAL OAKS ADDITION PLAT I  
 SANITARY SEWER PROFILES  
 AS BUILT Royal Oaks Addition

PLATE 5 - FULL PROFILE - COVERED  
 NATIONAL TRACING PAPER DIVISION  
 I.P.S. CO. OF IND. INDIANAPOLIS, INDIANA

