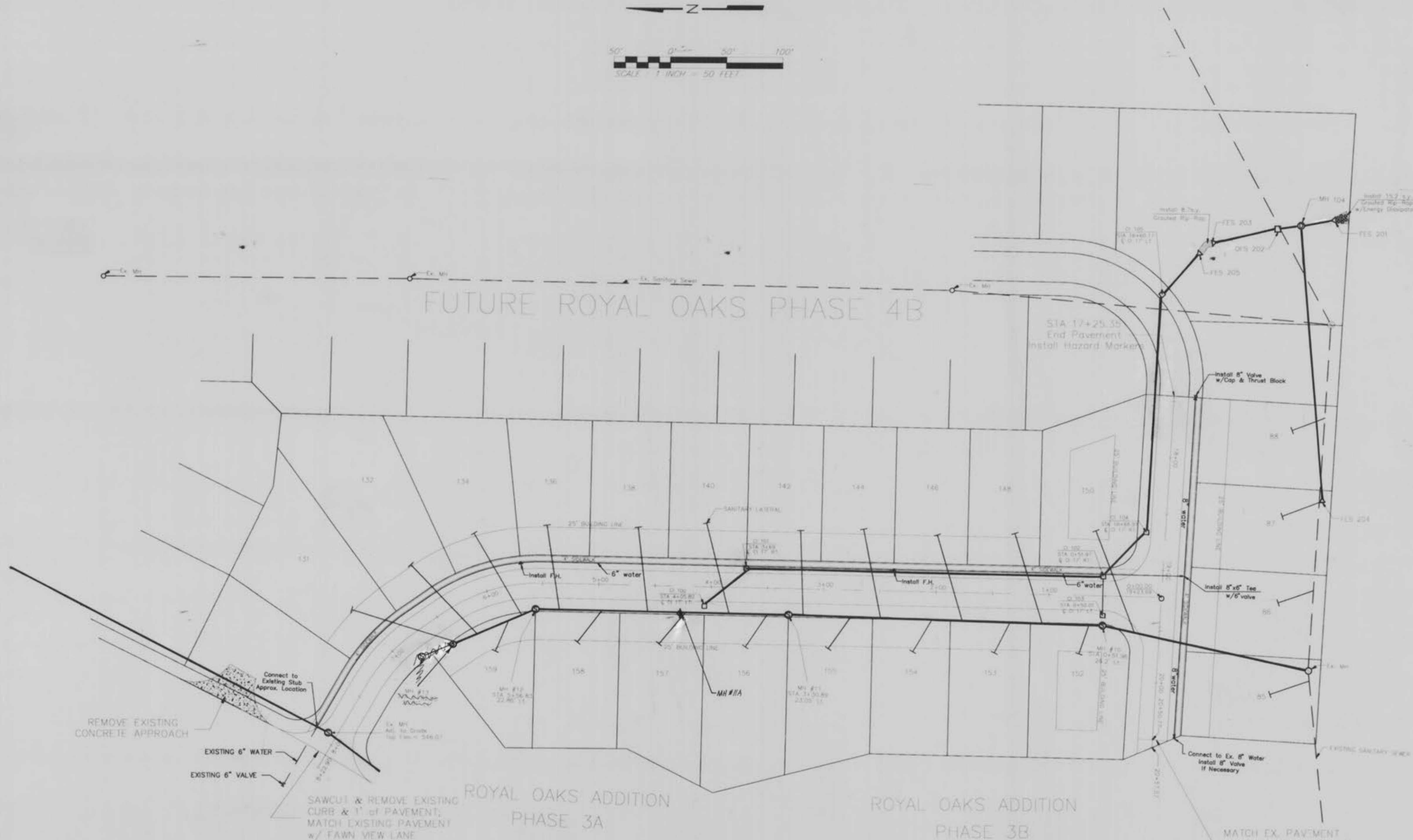
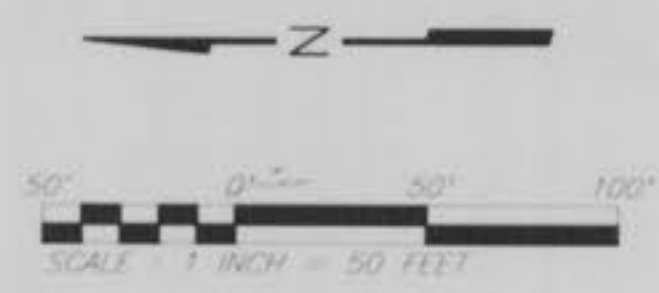


GBA GEORGE BUTLER ASSOCIATES, INC. Engineers / Architects / Planners Kansas City, Mo. / Lenexa, Ks. / O'Fallon, Mo.	DATE: APRIL, 1995	
	DESIGN: BFL, LJM	
	DRAWN BY: LJM	
SITE UTILITY PLAN	SHEET NO.	TOTAL SHEETS
	4	9
REVISIONS Adjusted Storm Sewer @ FES 201 AS BUILT'S	BY	DATE
	LJM	June 1995
	CEM	OCT. 1995



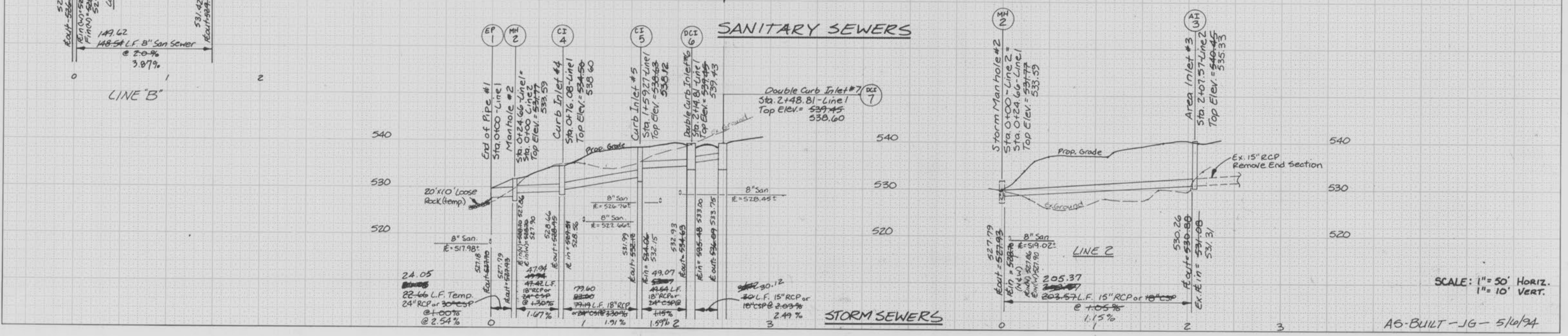
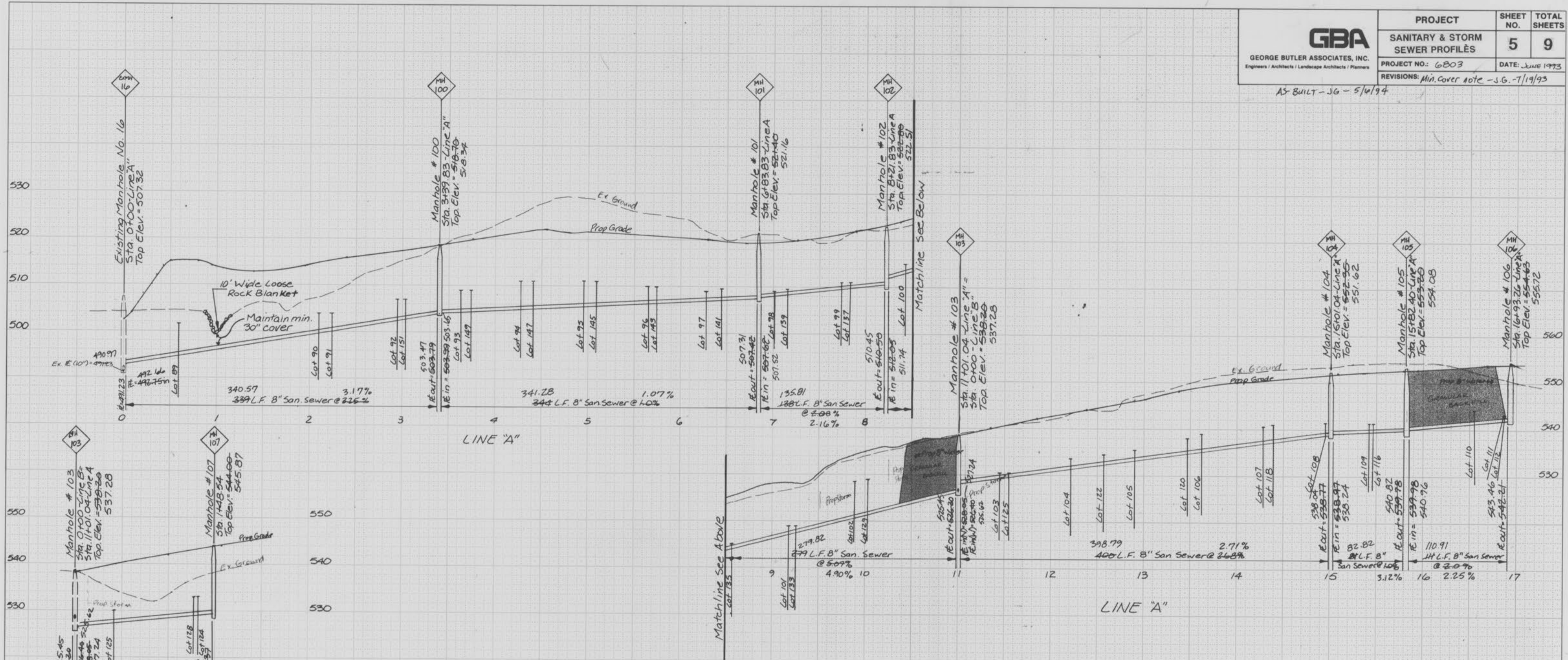
LEGEND	
	DRAINAGE MANHOLE
	SANITARY SEWER
	FIRE HYDRANT
	EXISTING WATER
	STORM SEWER
	SILTATION CONTROL
	PROPOSED CONTOURS
	EXISTING CONTOURS
	WATER VALVE
	PROPOSED WATER
	SANITARY LATERAL

*NOTE: All CI's to be Single Curb Inlets
 Standard Area Inlet Structure To Be Used For OFS 202

Royal Oaks Add.
 Royal Oaks Phase 3C As-Built

GBA GEORGE BUTLER ASSOCIATES, INC. Engineers / Architects / Landscape Architects / Planners	PROJECT	SHEET NO.	TOTAL SHEETS
	SANITARY & STORM SEWER PROFILES	5	9
	PROJECT NO: 6803	DATE: June 1993	
	REVISIONS: Min. Cover note - J.G. - 7/19/93		

AS-BUILT - JG - 5/10/94



SCALE: 1" = 50' HORIZ.
1" = 10' VERT.

AS-BUILT - JG - 5/10/94

