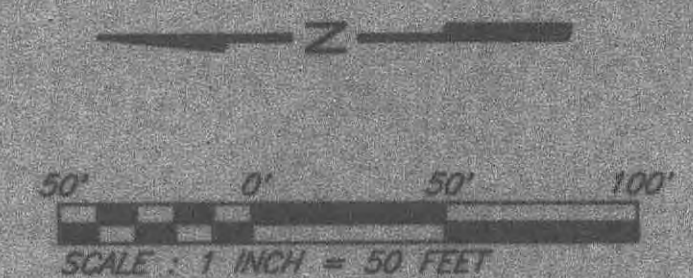
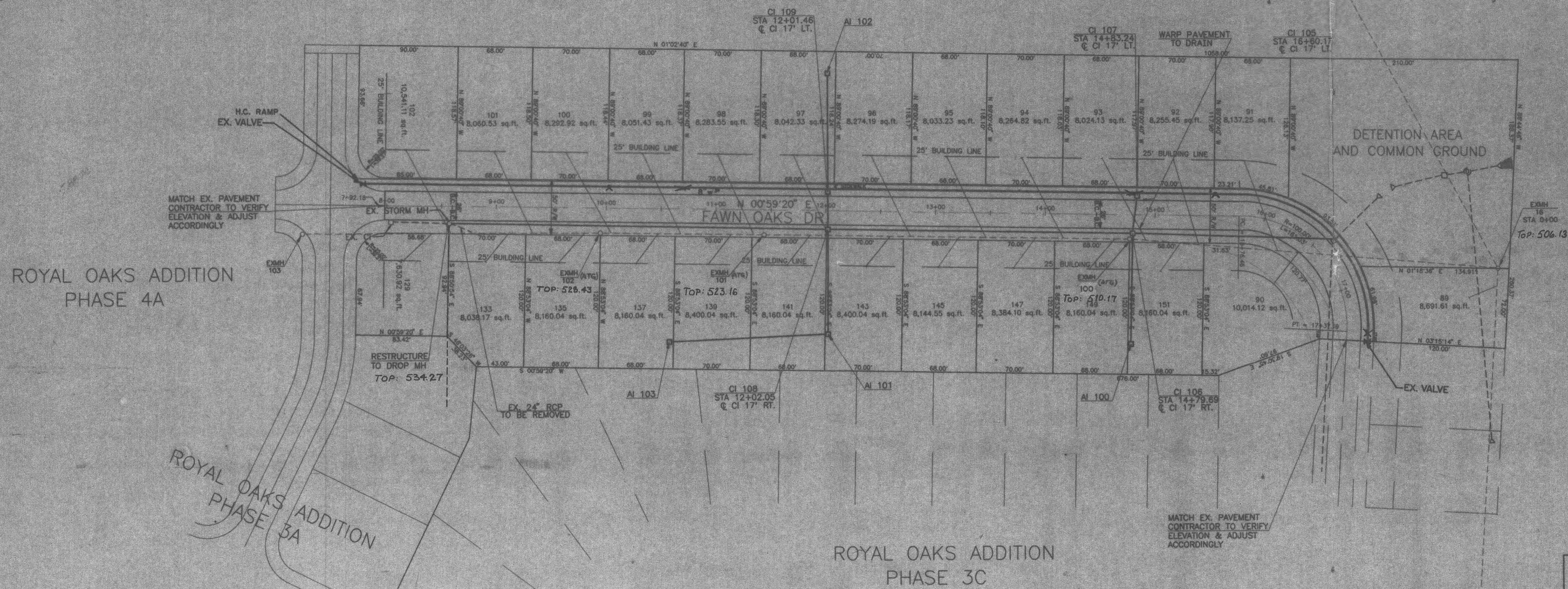


<b>GBA</b> GEORGE BUTLER ASSOCIATES, INC. <small>Engineers / Architects / Landscape Architects / Planners          Kansas City, Mo. / Lenexa, Mo. / Olathe, Mo. / Overland Park, Mo. / Shawnee, Mo. / St. Louis, Mo.</small>		DATE: OCTOBER 1996 DESIGN BY: LUM DRAWN BY: BMS PROJECT NO.: 7300-07
REGION:		SHEET NO.: 2 TOTAL SHEETS: 9
AS-BUILT'S		DATE: 9-4-96



APPROVED  
 10/1/96  
 Colleen Krummel



SANITARY LATERAL INFORMATION		
LOT #	STATION	SLOPE
129	10+03	21.0%
133	9+26	21.8%
135	8+57	18.8%
137	7+82	21.9%
139	7+16	17.1%
141	6+44	15.0%
143	5+74	11.0%
145	5+09	7.7%
147	4+41	3.8%
149	3+74	2.8%
151	3+03	5.8%
90	2+10	15.9%
89	0+59	56.5%
91	2+24	5.0%
92	2+95	2.6%
93	3+63	1.4%
94	4+27	1.8%
95	4+95	3.4%
96	5+65	4.9%
97	6+28	6.6%
98	7+01	7.7%
99	7+73	8.1%
100	8+42	8.8%
101	9+18	9.4%
102	9+88	14.2%

LEGEND	
	○ DRAINAGE MANHOLE
	○ SANITARY SEWER
	▼ FIRE HYDRANT
	--- EXISTING STORM SEWER
	- - - PROPOSED STORM SEWER
	▭ SILTATION CONTROL
	-510- PROPOSED CONTOURS
	520 EXISTING CONTOURS
	⊠ WATER VALVE
	— PROPOSED WATER
	— SANITARY LATERAL

NOTE:  
 EXISTING UNDERGROUND AND OVERHEAD UTILITIES AND DRAINAGE STRUCTURES HAVE BEEN PLOTTED FROM AVAILABLE INFORMATION AND THEIR LOCATIONS MUST BE CONSIDERED APPROXIMATE ONLY. IT IS THE RESPONSIBILITY OF THE CONTRACTOR TO NOTIFY THE UTILITY COMPANIES AND TO VERIFY THE LOCATIONS OF EXISTING UTILITIES BEFORE ACTUAL CONSTRUCTION BEGINS. ANY DISCREPANCIES NOTED MUST BE REPORTED TO THE ENGINEER IMMEDIATELY.

ROYAL OAKS ADDITION  
 PHASE 4A

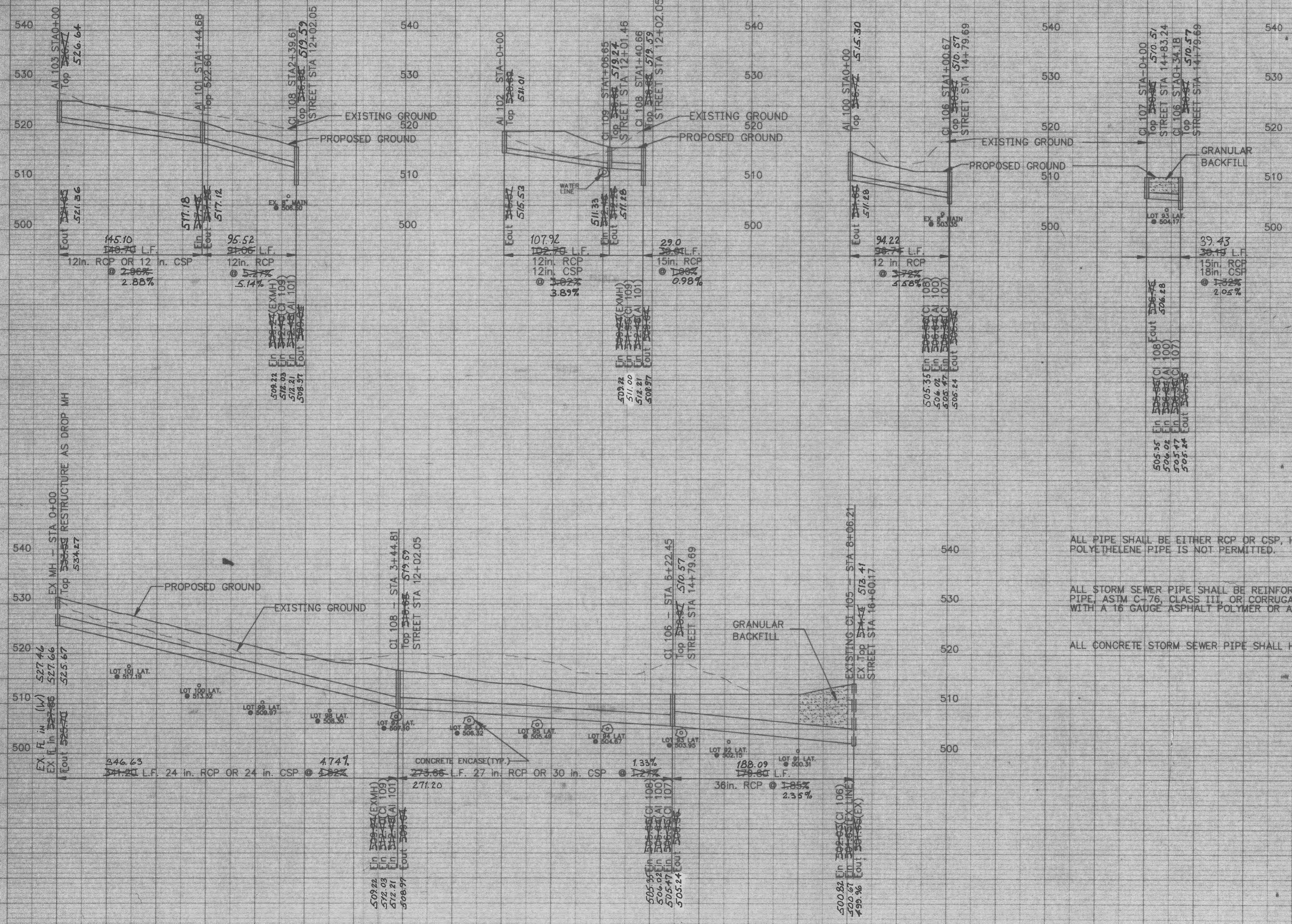
ROYAL OAKS ADDITION  
 PHASE 3A

ROYAL OAKS ADDITION  
 PHASE 3C

**STORM SEWER PROFILES**

As-Built's

SHEET NO.	7	TOTAL SHEETS	9
REVISIONS	BY	DATE	
	LJM	9-4-96	



ALL PIPE SHALL BE EITHER RCP OR CSP, HIGH DENSITY POLYETHYLENE PIPE IS NOT PERMITTED.

ALL STORM SEWER PIPE SHALL BE REINFORCED CONCRETE PIPE, ASTM C-76, CLASS III, OR CORRUGATED STEEL M-36 WITH A 16 GAUGE ASPHALT POLYMER OR ALUMINIZED COATING.

ALL CONCRETE STORM SEWER PIPE SHALL HAVE "O-RING" GASKETS.