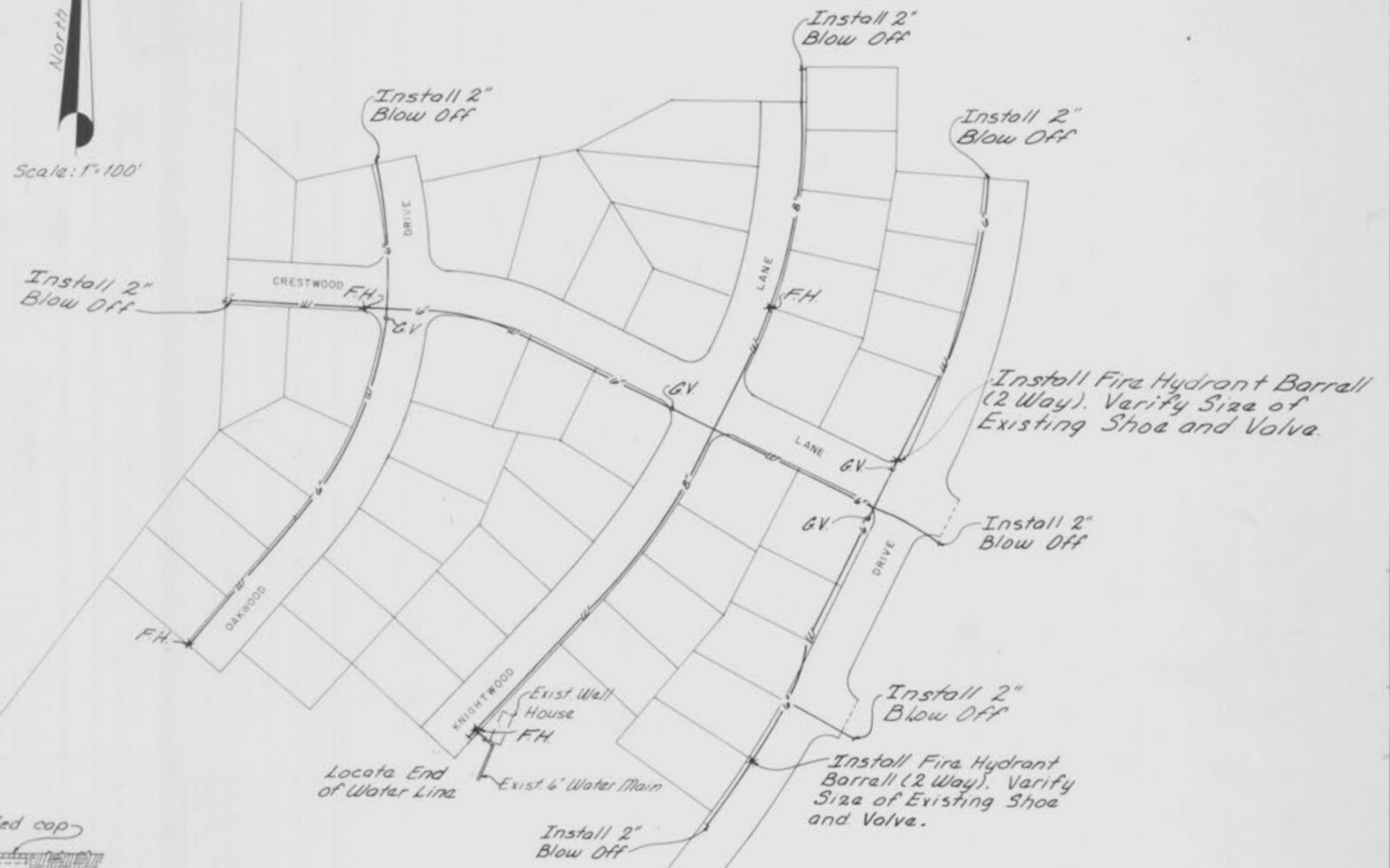
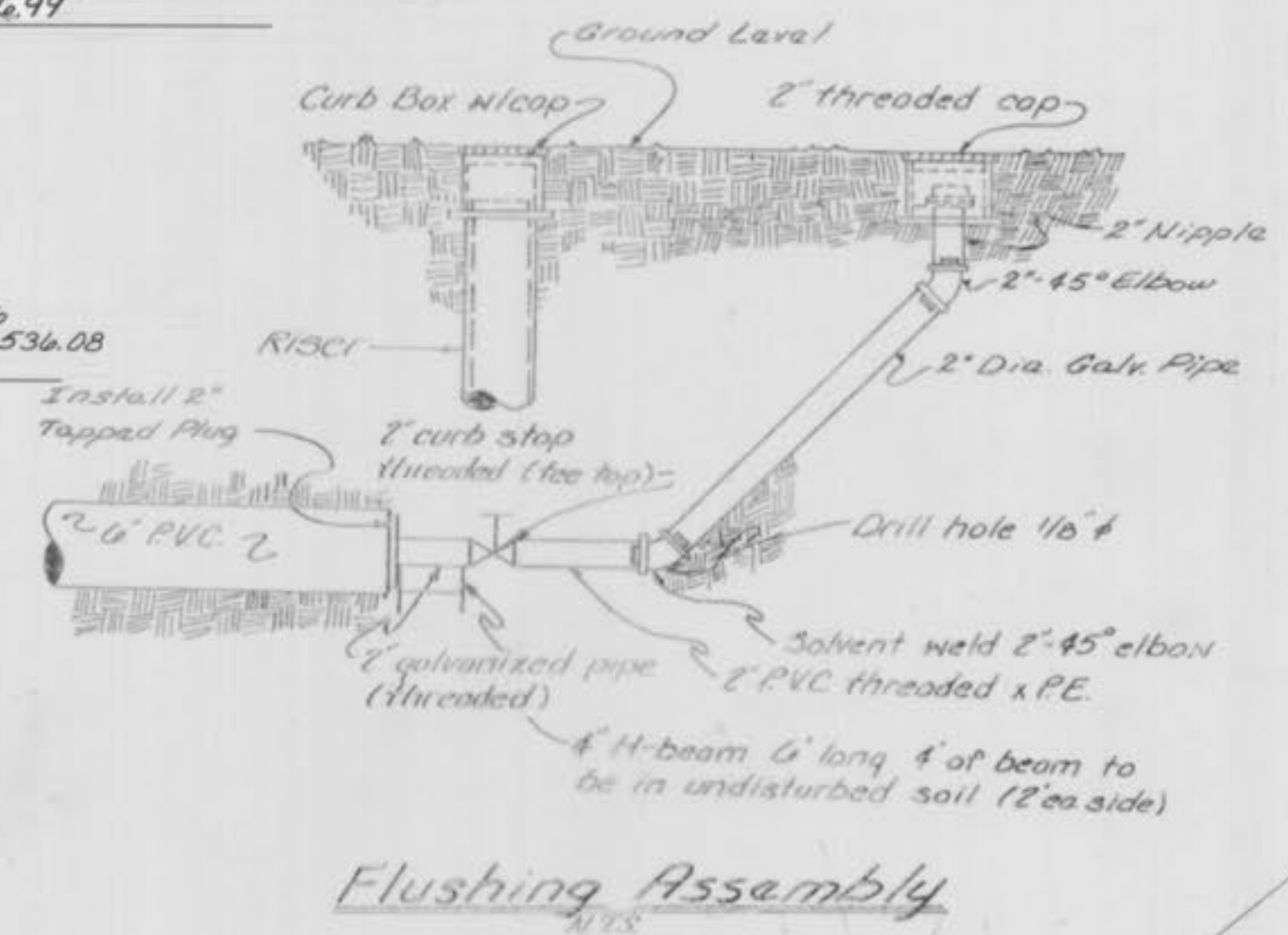




NOTE: Repair or Replace All Cracked or Broken B.V.C.P. TV Inspection Available for Exact Repair Locations



- 1) All Valve Boxes To Be Cleaned Out For Access To Operating Nut. Valve Boxes To Be Repaired or Replaced As Needed
- 2) The Contractor Shall Test All Valves To Insure Their Full Opening/Closing and Flush Out The System Progressively By Opening Flushing Valves and Permitting The Flow To Continue From Each Until The Water Runs Clear. During Such Flushing Operation The Owner May Test The Flow From Flushing Valves and, Before Final Acceptance of The Work, Make Further Tests of Flows to Ascertain if The Lines Are Clear.
- 3) The Contractor Shall Furnish The Necessary Pump, Piping, and Other Apparatus and, Under The Supervision of The Owner's Representative, Test The Piping For Leakage, For A Period of At Least Two Hours At a Pressure of 150 Pounds Per Square Inch. The Contractor Shall Locate and Repair All Leaks and Continue The Tests Until All Leaks Have Been Eliminated from The Part of The System Under Test.
- 4) As Soon as The Water Distribution System Has Been Tested as Above Specified, It Shall be Sanitized 50 PPM, Held For 16 Hours, Flushed Clean and a Chlorine Residual Test Performed. The Owner Reserves The Right to Test The Water Again at Any Time Prior to Final Acceptance of The Work, and if Found Unsafe Bacteriologically, to Require The Contractor to Rechlorinate The System Until The Water is Proven Equal to That Supplied by The Public Supply.



**GBA**  
 GEORGE BUTLER ASSOCIATES, INC.  
 CONSULTING ENGINEERS/ARCHITECTS  
 LANDSCAPE ARCHITECTS/PLANNERS

**OFFICES:**  
 ONE FINE RIDGE PLAZA  
 SUITE 200  
 801 MELROSE DRIVE  
 LENEXA, KANSAS 66242  
 785-261-1111  
 KANSAS CITY, MISSOURI 64108

Royal Oaks Subdivision  
 Plat I  
 Water and Sewer  
 Improvements

JOB NO 85-8187  
 DATE Oct 11, 1985  
 SCALE As Shown  
 SHEET NO 1 of 2

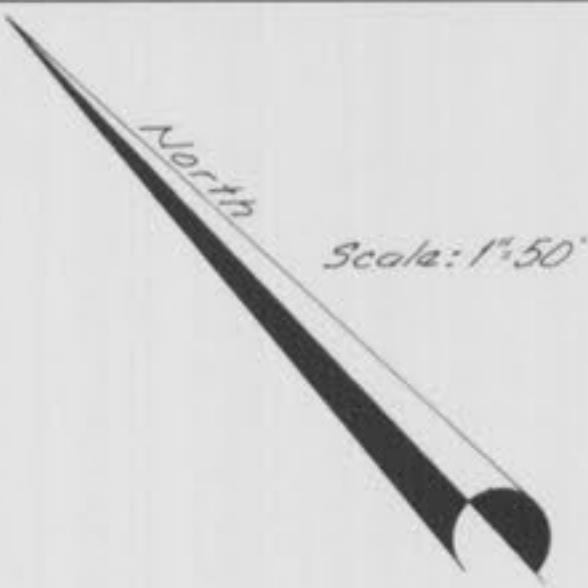
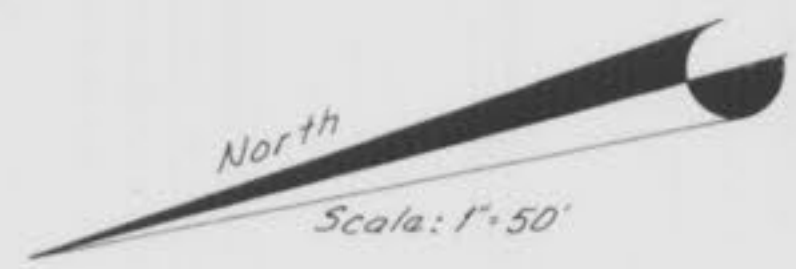
DESIGNED BY FLE DRAWN BY CRP CHECKED BY FLE

6/8/86 "As-Built" CRP

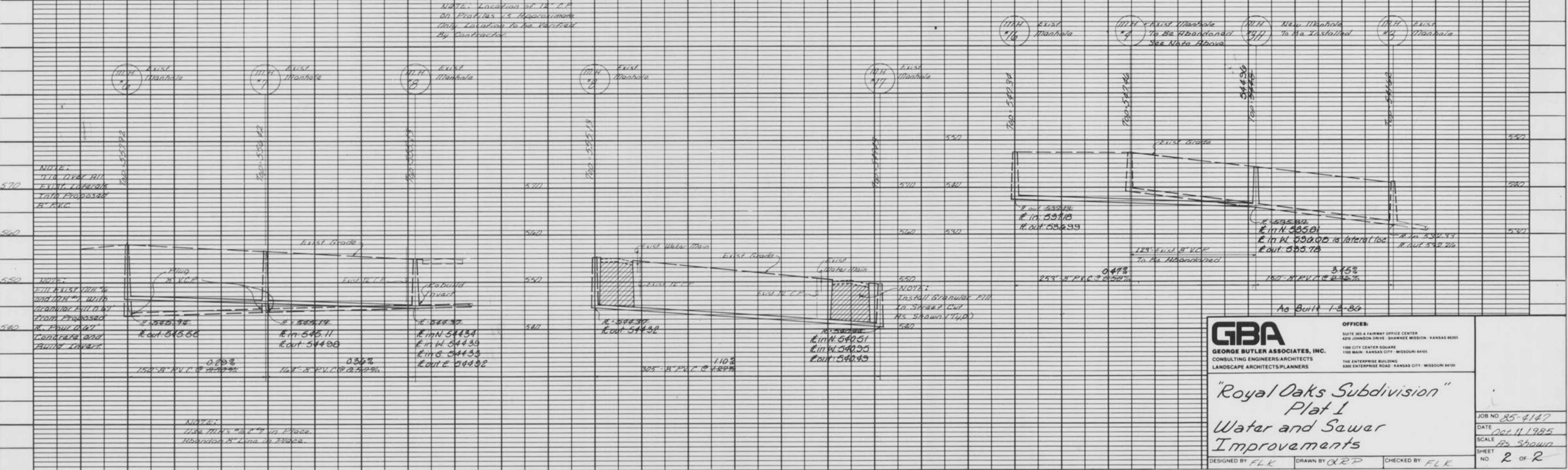
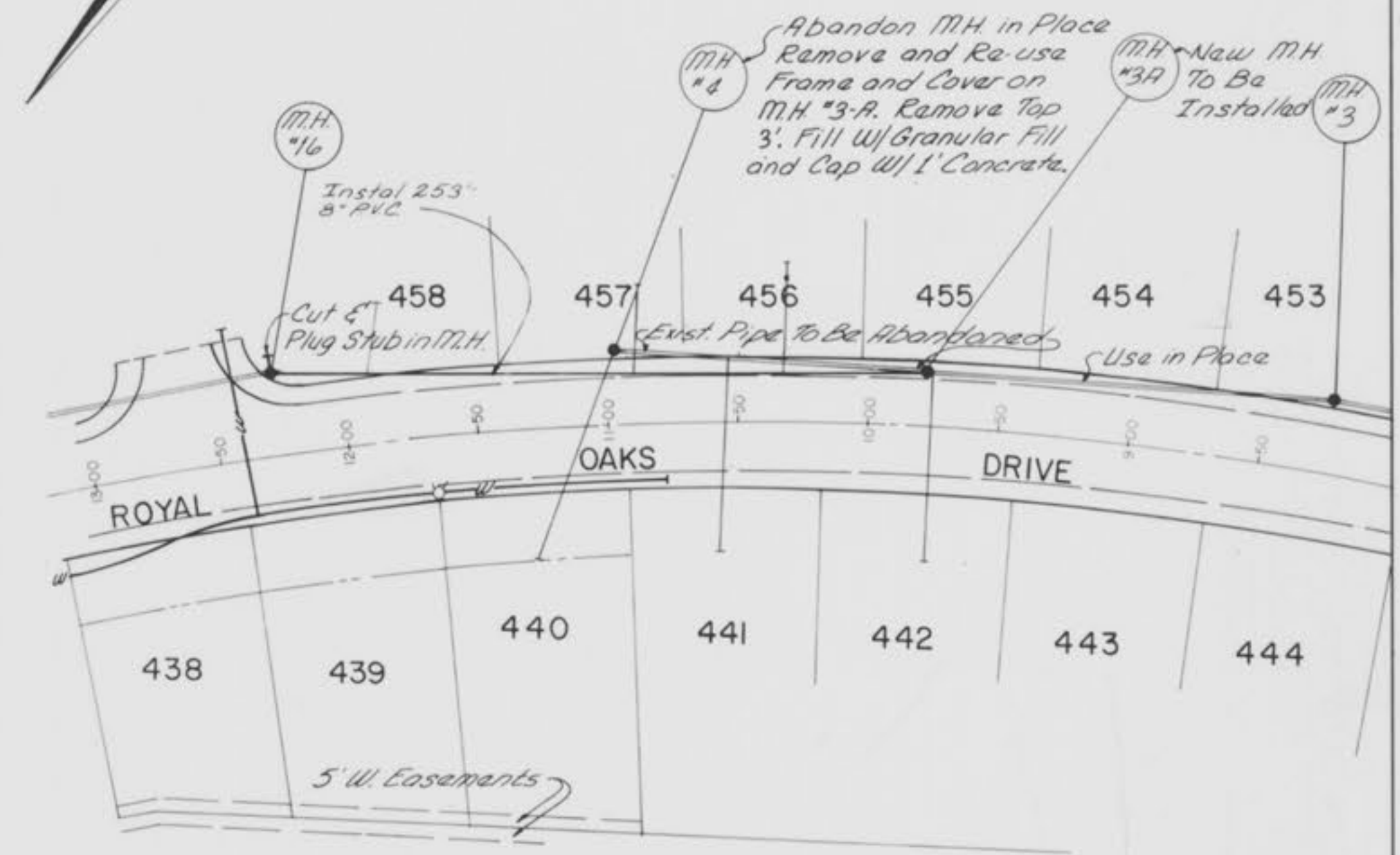
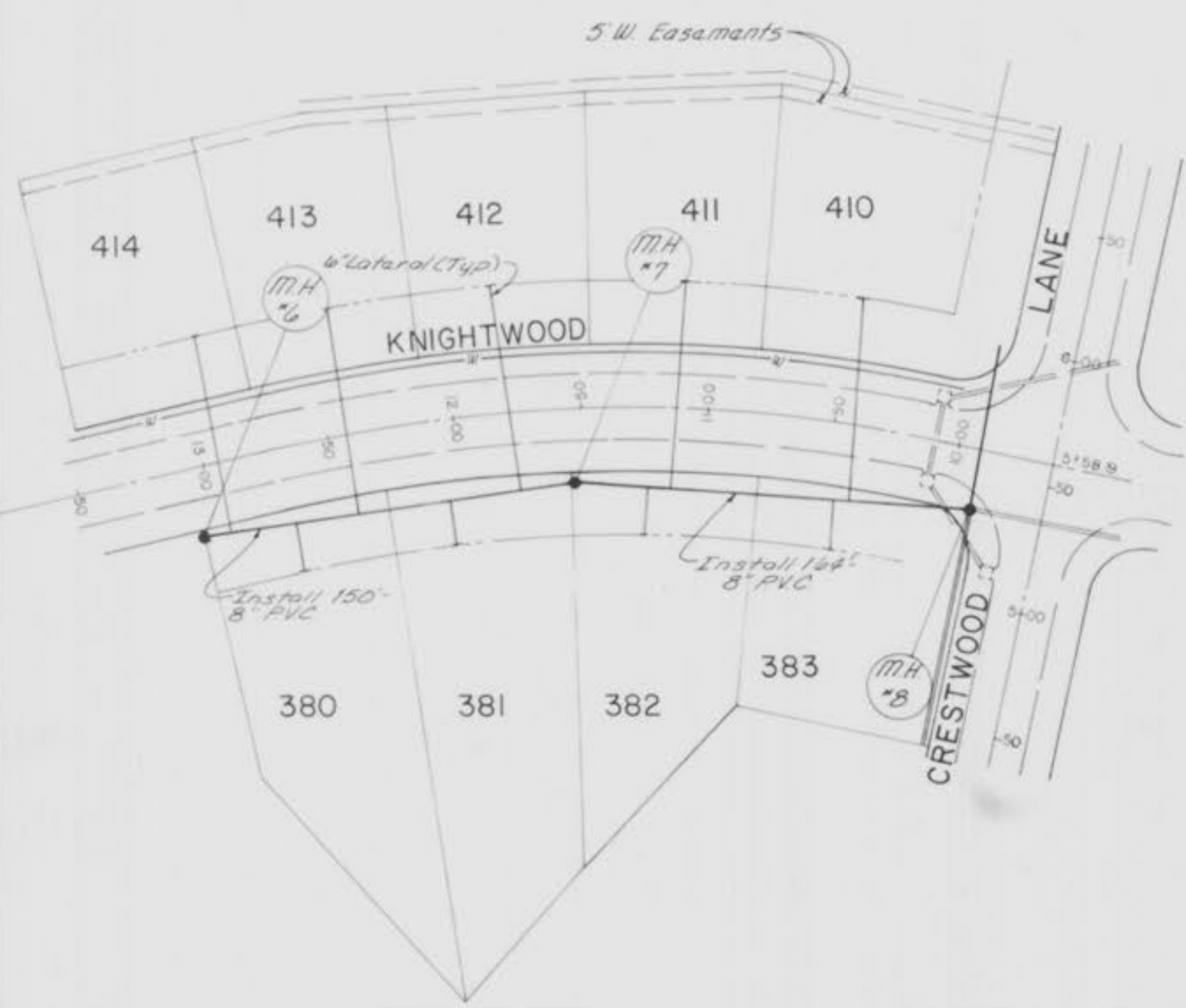
PROPERTY OF  
 CITY OF FALLON  
 BUILDING DEPARTMENT

ROYAL OAKS SUBDIVISION  
 PLAT I  
 WATER & SEWER IMPROVEMENTS  
 AS BUILT Royal Oaks Addition





Note: Tie Over Exist  
Laterals Into Proposed  
8" PVC



**GBA**  
**GEORGE BUTLER ASSOCIATES, INC.**  
 CONSULTING ENGINEERS-ARCHITECTS  
 LANDSCAPE ARCHITECTS-PLANNERS

**OFFICES:**  
 SUITE 204 FAIRWAY OFFICE CENTER  
 420 JOHNSON DRIVE SHAWNEE MISSOURI KANSAS 66201  
 1100 CITY CENTER SQUARE  
 1100 MAIN KANSAS CITY MISSOURI 64105  
 THE ENTERPRISE BUILDING  
 500 ENTERPRISE ROAD KANSAS CITY MISSOURI 64109

**"Royal Oaks Subdivision"  
 Plat 1  
 Water and Sewer  
 Improvements**

DESIGNED BY FLK DRAWN BY CRP CHECKED BY FLK

JOB NO 85-4147  
 DATE Oct 11, 1985  
 SCALE As Shown  
 SHEET NO 2 OF 2

6/186 "As-Built" C.R.P.

PROPERTY OF  
 CITY OF FALLON  
 BUILDING DEPARTMENT

ROYAL OAKS SUBDIVISION  
 PLAT 1  
 WATER & SEWER IMPROVEMENTS  
 AS BUILT Royal Oaks Addition