

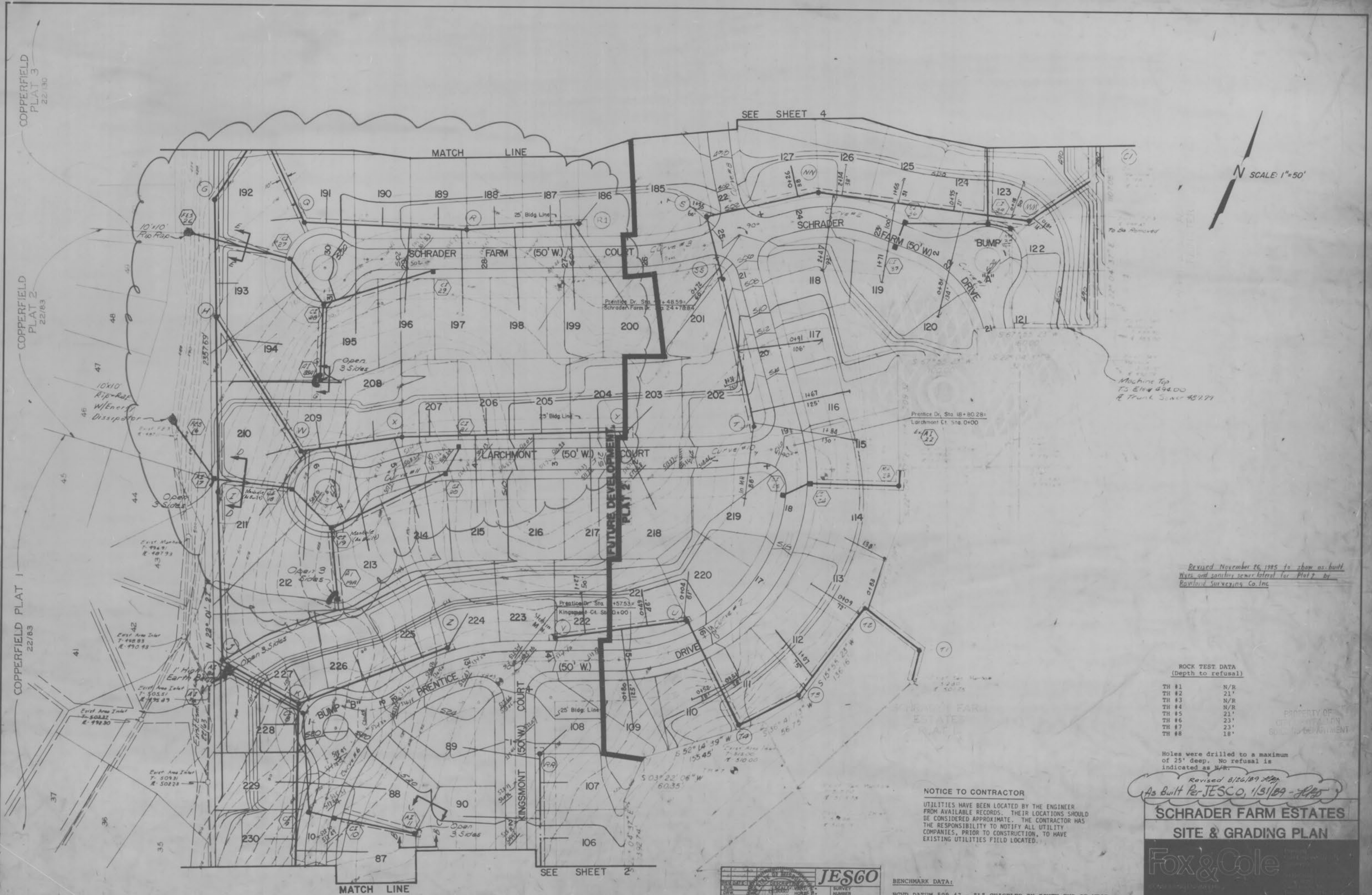
COPPERFIELD PLAT 3
22/83

COPPERFIELD PLAT 2
22/83

COPPERFIELD PLAT 1
22/83

SEE SHEET 4

SCALE: 1"=50'



Revised November 26, 1985 to show as built
Wyes and sanitary sewer lateral for Plat 2 by
Rayford Surveying Co. Inc.

ROCK TEST DATA
(Depth to refusal)

TH #1	N/R
TH #2	21'
TH #3	N/R
TH #4	N/R
TH #5	21'
TH #6	23'
TH #7	23'
TH #8	18'

Holes were drilled to a maximum
of 25' deep. No refusal is
indicated as N/R.

NOTICE TO CONTRACTOR
UTILITIES HAVE BEEN LOCATED BY THE ENGINEER
FROM AVAILABLE RECORDS. THEIR LOCATIONS SHOULD
BE CONSIDERED APPROXIMATE. THE CONTRACTOR HAS
THE RESPONSIBILITY TO NOTIFY ALL UTILITY
COMPANIES, PRIOR TO CONSTRUCTION, TO HAVE
EXISTING UTILITIES FIELD LOCATED.

Revised 8/26/89 JESGO
As Built Per JESGO, 1/31/89 - JESGO

**SCHRADER FARM ESTATES
SITE & GRADING PLAN**

Fox & Cole

JESGO
JAMES ENGINEERING & SURVEYING CO., INC.
ENGINEERS & SURVEYORS
780 FORSYTH ST., SUITE 200, ST. LOUIS, MO. 63105
(314) 787-4525

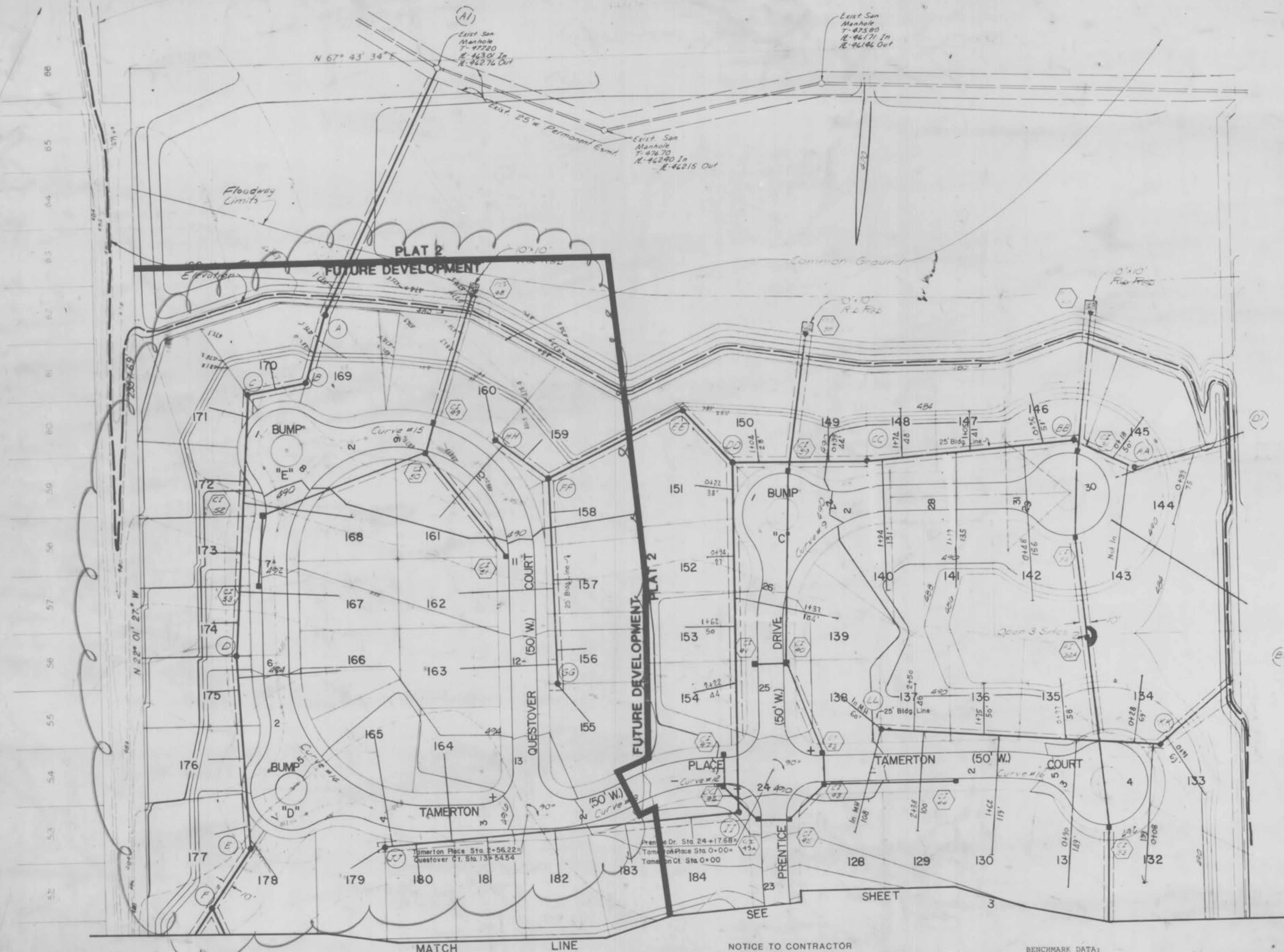
BENCHMARK DATA:
NGVD DATUM 509.47 - "L" CHISELED ON SOUTH END OF WEST
HEADWALL OF STATE HIGHWAY K BRIDGE OVER BELLEAU CREEK,
RM 68 F.E.M.A. STUDY MARCH 1978.
TBM - 525.96 - "O" IN OPEN, FIREPLUG NORTH SIDE MEXICO
ROAD, CORNER OF COPPERFIELD SUBDIVISION.

Drawn By DWP	Checked By SMB	Project Number 83-132	Sheet Number 3 OF 21
Date 5/1/84	Revisions 0/1/84 1/2/84 1/2/84 1/2/84		

BELLEAU LAKE ESTATES
IMPROVEMENT ASSOCIATION

N SCALE: 1" = 50'

COPPERFIELD PLAT 3
22/130



PROPERTY OF
CITY OF STALLON
BUILDING DEPARTMENT

Revised November 26, 1985 to show as built
Wys and sanitary sewer laterals for Plat 2
by Rowland Surveying Co., Inc.

JAMES ENGINEERING & SURVEYING CO., INC.
ENGINEERS PLANNERS SURVEYORS
7810 FORSYTH BLVD. SUITE 300 ST. LOUIS, MO. 63105
(314) 271-4000 FAX (314) 272-4504

As Built Per Plans, 1/31/89 - JAC

SCHRADER FARM ESTATES
SITE & GRADING PLAN

Fox & Cole
CONSULTING ENGINEERS
Professional Engineer
No. 247614

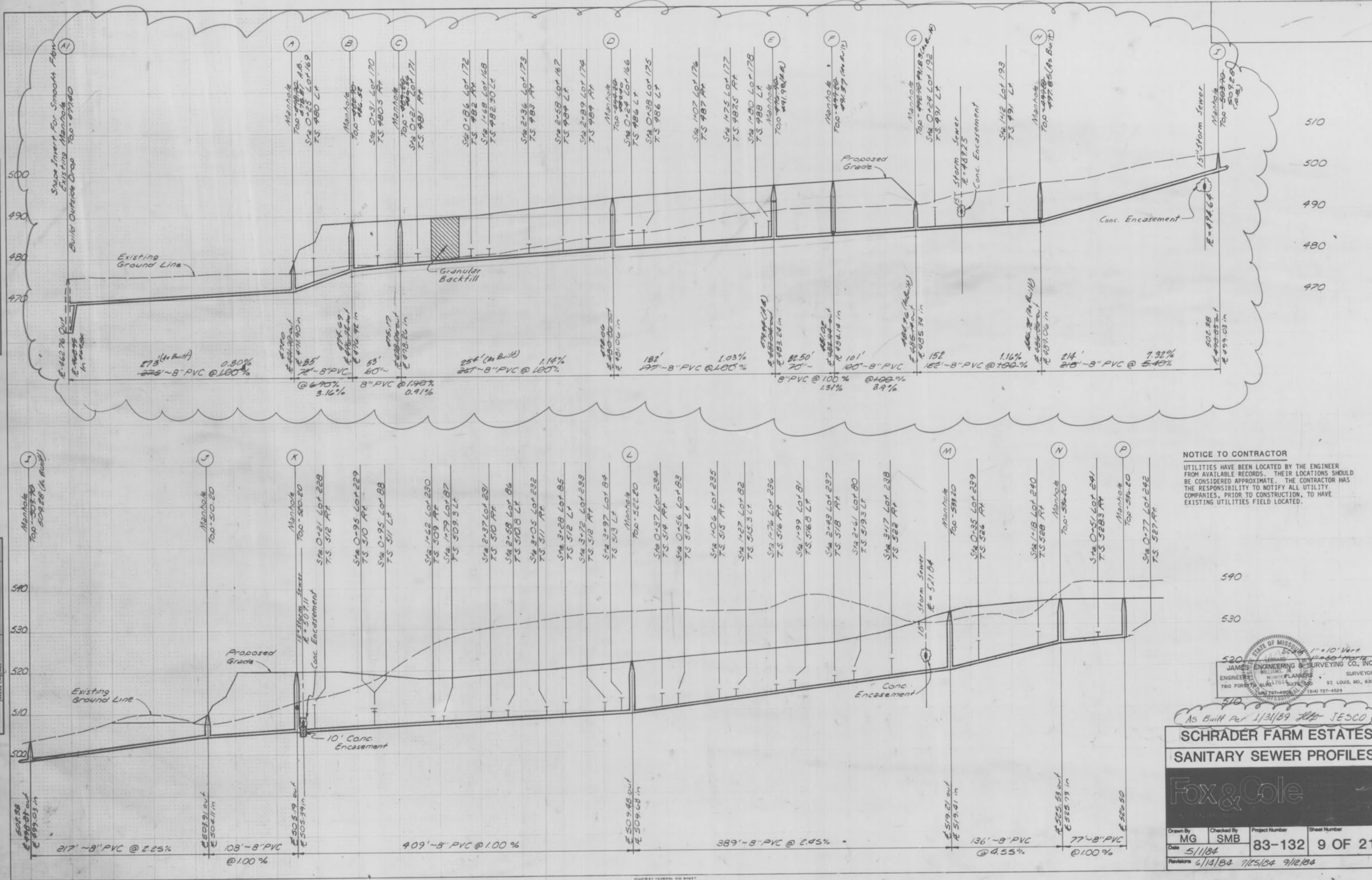
NOTICE TO CONTRACTOR
UTILITIES HAVE BEEN LOCATED BY THE ENGINEER FROM AVAILABLE RECORDS. THEIR LOCATIONS SHOULD BE CONSIDERED APPROXIMATE. THE CONTRACTOR HAS THE RESPONSIBILITY TO NOTIFY ALL UTILITY COMPANIES, PRIOR TO CONSTRUCTION, TO HAVE EXISTING UTILITIES FIELD LOCATED.

BENCHMARK DATA:
NGVD DATUM 509.47 - "L" CHISELED ON SOUTH END OF WEST HEADWALL OF STATE HIGHWAY K BRIDGE OVER BELLEAU CREEK. RM 68 F.E.M.A. STUDY MARCH 1978.
BM - 525.96 - "O" IN OPEN, FIREPLUG NORTH SIDE MEXICO ROAD, CORNER OF COPPERFIELD SUBDIVISION.

Drawn By DWP	Checked By SMB	Project Number 83-132	Sheet Number 4 OF 21
Date 5/1/84	Revisions 6/10/84 7/20/84 7/25/84		

FINAL SURVEY
 SURVEYED BY
 PLOTTED BY
 NOTE BOOK NO.
 AREA CHECKED

ORIGINAL SURVEY
 SURVEYED BY
 PLOTTED BY
 NOTE BOOK NO.
 AREA CHECKED



NOTICE TO CONTRACTOR
 UTILITIES HAVE BEEN LOCATED BY THE ENGINEER FROM AVAILABLE RECORDS. THEIR LOCATIONS SHOULD BE CONSIDERED APPROXIMATE. THE CONTRACTOR HAS THE RESPONSIBILITY TO NOTIFY ALL UTILITY COMPANIES, PRIOR TO CONSTRUCTION, TO HAVE EXISTING UTILITIES FIELD LOCATED.

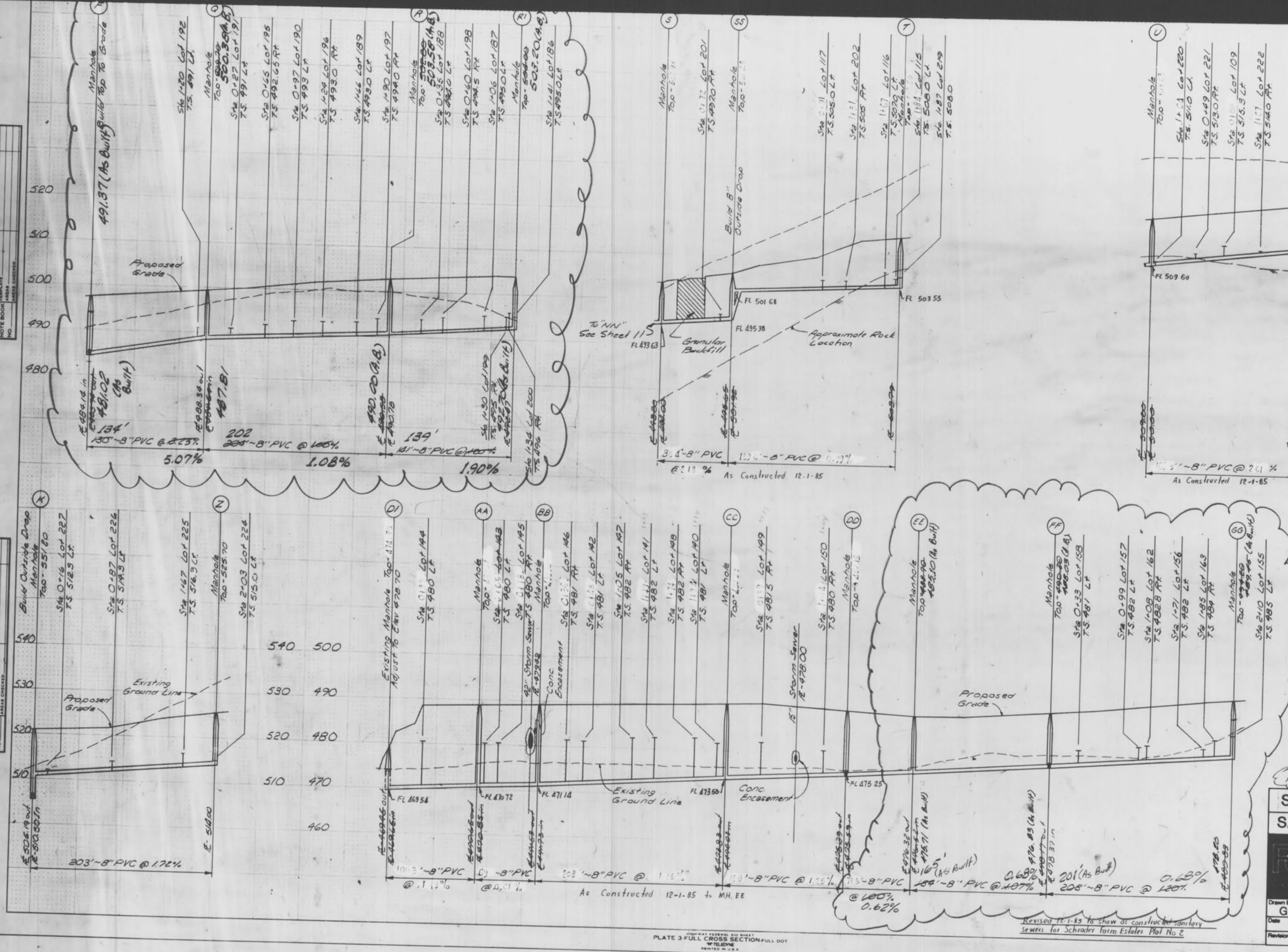


As Built Per 1/31/89 JESCO
SCHRADER FARM ESTATES
SANITARY SEWER PROFILES

Fox & Cole
 Drawn By: MG
 Checked By: SMB
 Project Number: 83-132
 Sheet Number: 9 OF 21
 Date: 5/1/84
 Revisions: 6/14/84 7/25/84 9/12/84

DATE	
BY	
REVISIONS	
NO.	
DESCRIPTION	
DATE	
BY	
REVISIONS	
NO.	
DESCRIPTION	
DATE	
BY	
REVISIONS	
NO.	
DESCRIPTION	
DATE	
BY	
REVISIONS	
NO.	
DESCRIPTION	

DATE	
BY	
REVISIONS	
NO.	
DESCRIPTION	
DATE	
BY	
REVISIONS	
NO.	
DESCRIPTION	
DATE	
BY	
REVISIONS	
NO.	
DESCRIPTION	



NOTICE TO CONTRACTOR
 UTILITIES HAVE BEEN LOCATED BY THE ENGINEER FROM AVAILABLE RECORDS. THEIR LOCATIONS SHOULD BE CONSIDERED APPROXIMATE. THE CONTRACTOR HAS THE RESPONSIBILITY TO NOTIFY ALL UTILITY COMPANIES, PRIOR TO CONSTRUCTION, TO HAVE EXISTING UTILITIES FIELD LOCATED.

Scale: 1" = 10' Vert
 1" = 50' Horiz

500

JAMES ENGINEERING & SURVEYING CO., INC.
 SURVEYORS
 780 FORSTH BLDG. LOUIS, MO. 63008
 (314) 727-4008 (314) 727-4524

**SCHRADER FARM ESTATES
 SANITARY SEWER PROFILES**

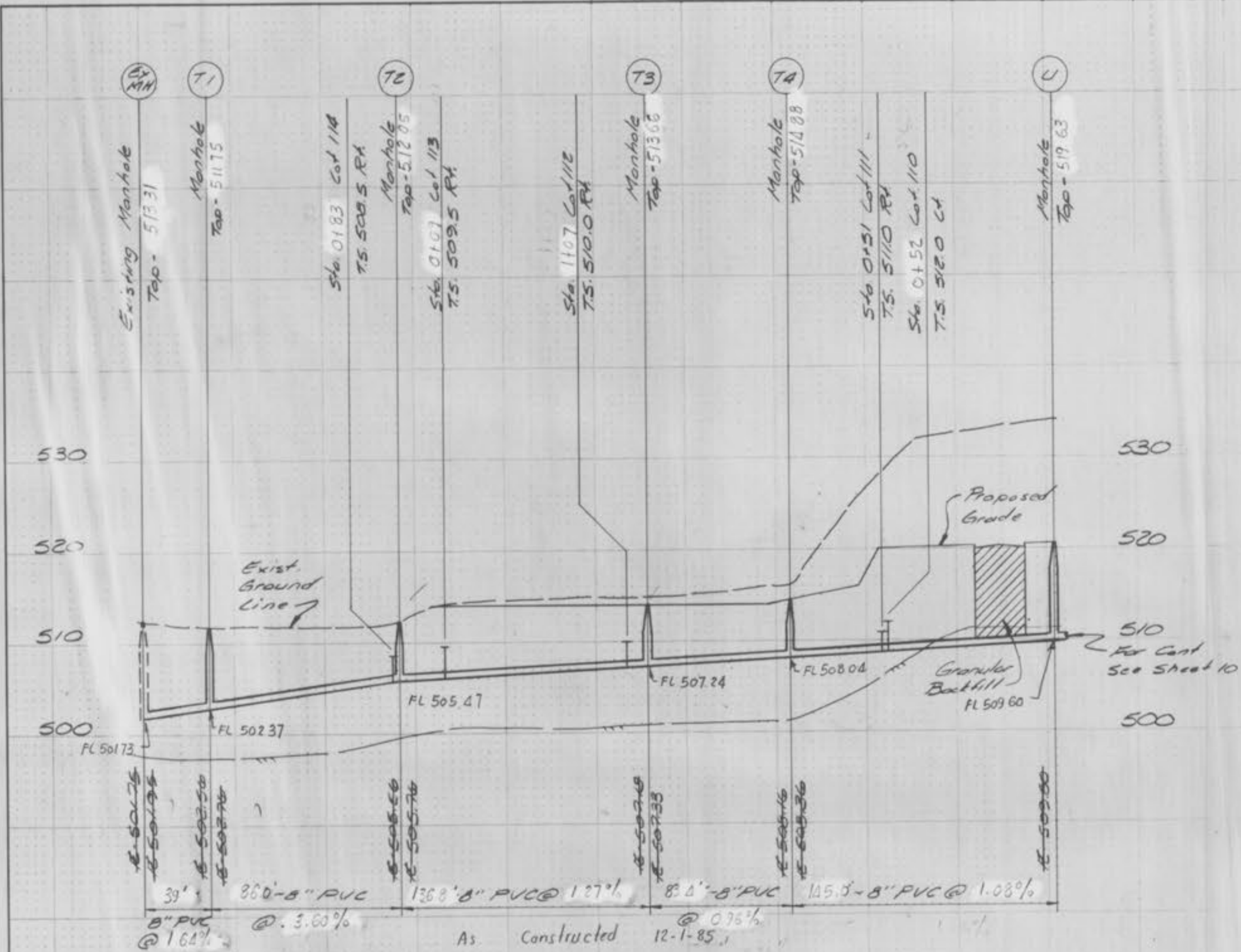


Drawn By	GJP	Checked By	SMB	Project Number	83-132	Sheet Number	10 OF 21
Date	5/1/84			Revisions	6/14/84 7/25/84 8/30/84 9/12/84		

PLATE 3 FULL CROSS SECTION FULL DOT
 WILSONE
 PRINTED IN U.S.A.

FINAL SURVEY PLOTTED BY DATE
 NO. NOTE BOOK AREA CHECKED

ORIGINAL SURVEY PLOTTED BY DATE
 NO. NOTE BOOK AREA CHECKED



Scale: 1" = 10' Vert.
 N.T.S. Horiz.

NOTICE TO CONTRACTOR:
 UTILITIES HAVE BEEN LOCATED BY THE ENGINEER FROM AVAILABLE RECORDS. THEIR LOCATIONS SHOULD BE CONSIDERED APPROXIMATE. THE CONTRACTOR HAS THE RESPONSIBILITY TO NOTIFY ALL UTILITY COMPANIES, A MINIMUM OF 48 HOURS (2 WORKING DAYS), PRIOR TO CONSTRUCTION TO HAVE EXISTING UTILITIES FIELD LOCATED.

**SCHRADER FARM ESTATES
 SANITARY SEWER PROFILES**



5000 Cedar Plaza Parkway • Suite 301 • St. Louis MO 63128 • (314) 649-6900

Drawn By MG	Checked By SMB	Project Number 83-132	Sheet Number 10A OF 21
Date 5/13/05	Revisions		

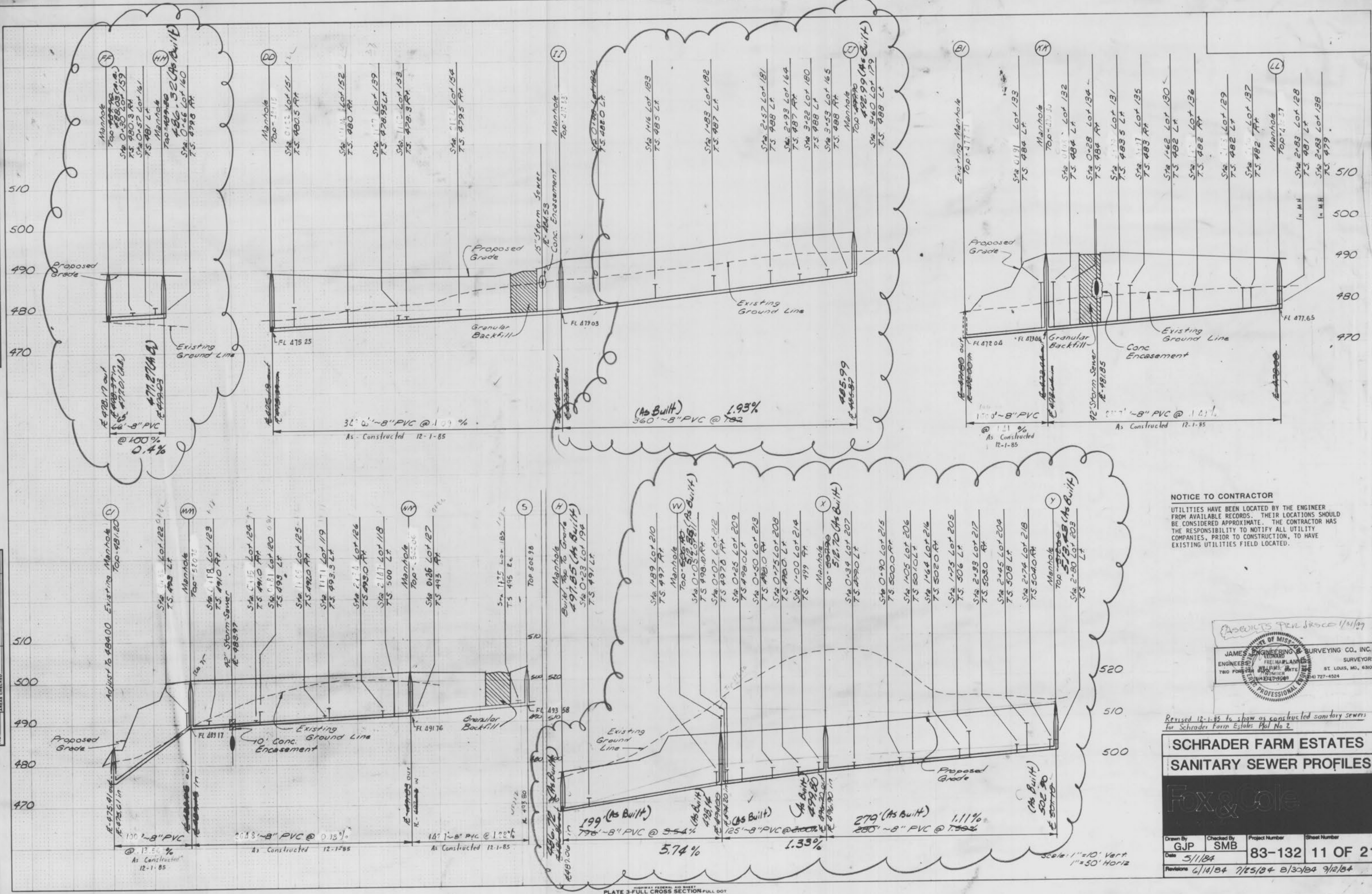
Revised 12-1-85 to show as constructed sanitary sewers for Schrader farm Estates Plat No. 2

SCHRADER FARM ESTATES - PLAT 2
 SANITARY SEWER PROFILES - AS BUILT

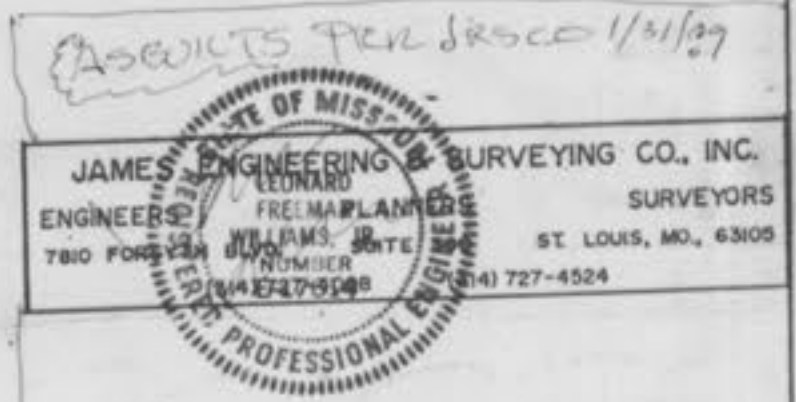
PROPERTY OF
 CITY OF FALLON
 BUILDING DEPARTMENT

FINAL SURVEY PLOTTED FROM ORIGINAL SURVEY DATA. NOTE BOOK NO. AREA CHECKED.

ORIGINAL SURVEY PLOTTED FROM ORIGINAL SURVEY DATA. NOTE BOOK NO. AREA CHECKED.



NOTICE TO CONTRACTOR
 UTILITIES HAVE BEEN LOCATED BY THE ENGINEER FROM AVAILABLE RECORDS. THEIR LOCATIONS SHOULD BE CONSIDERED APPROXIMATE. THE CONTRACTOR HAS THE RESPONSIBILITY TO NOTIFY ALL UTILITY COMPANIES, PRIOR TO CONSTRUCTION, TO HAVE EXISTING UTILITIES FIELD LOCATED.



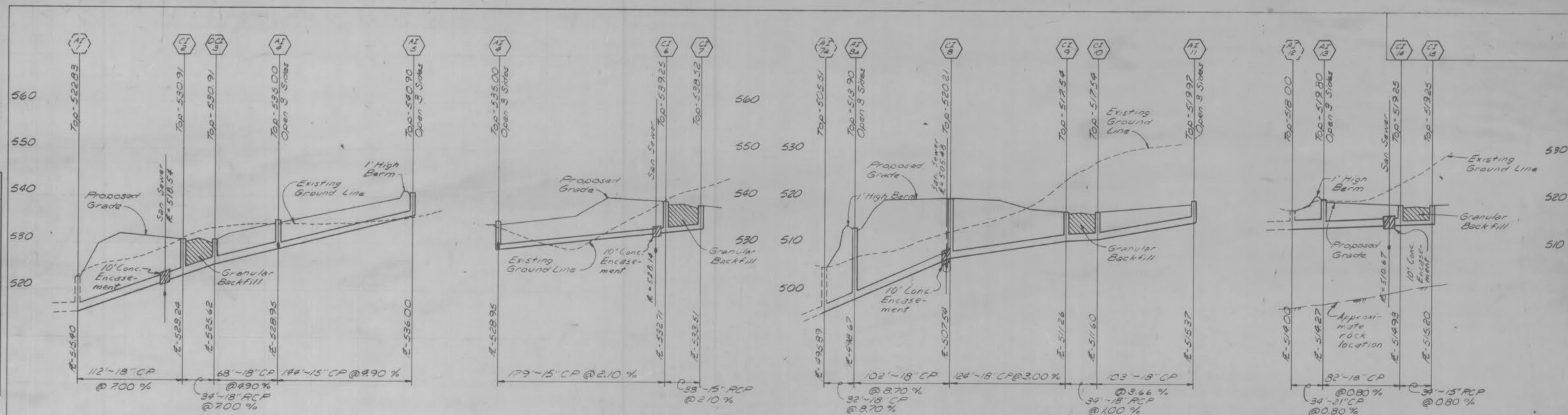
Revised 12-1-85 to show as constructed sanitary sewers for Schradler Farm Estates Plat No. 2.

**SCHRADER FARM ESTATES
 SANITARY SEWER PROFILES**

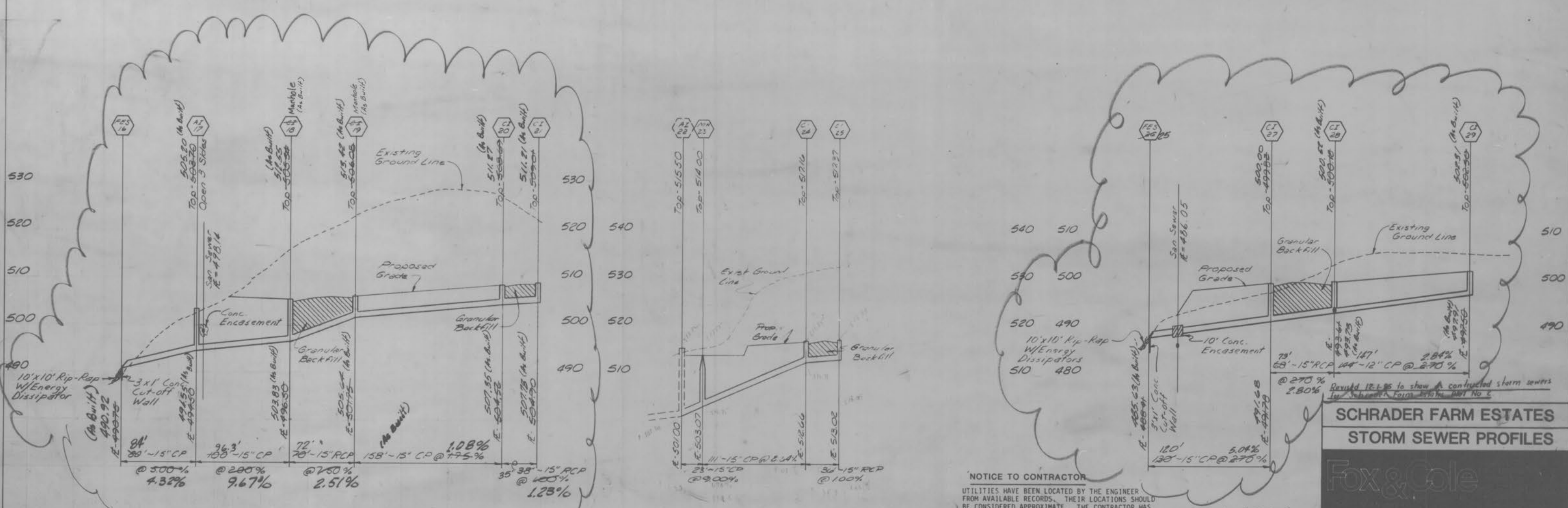
Drawn By GJP	Checked By SMB	Project Number 83-132	Sheet Number 11 OF 21
Date 5/1/84	Revisions 6/14/84 7/25/84 8/30/84 9/12/84		

PROPERTY OF
 CITY OF FALLON
 BUILDING DEPARTMENT

DATE: _____ BY: _____
 ORIGINAL SURVEY PLOTTED: _____
 SURVEY BOOK NO: _____
 NOTE BOOK NO: _____
 AREA CHECKED: _____



DATE: _____ BY: _____
 ORIGINAL SURVEY PLOTTED: _____
 SURVEY BOOK NO: _____
 NOTE BOOK NO: _____
 AREA CHECKED: _____



NOTICE TO CONTRACTOR
 UTILITIES HAVE BEEN LOCATED BY THE ENGINEER FROM AVAILABLE RECORDS. THEIR LOCATIONS SHOULD BE CONSIDERED APPROXIMATE. THE CONTRACTOR HAS THE RESPONSIBILITY TO NOTIFY ALL UTILITY COMPANIES, PRIOR TO CONSTRUCTION, TO HAVE EXISTING UTILITIES FIELD LOCATED.

As Built Per JESCO, 1/31/89 - JES

**SCHRADER FARM ESTATES
 STORM SEWER PROFILES**

Fox & Cole			
Drawn By GJP	Checked By SMB	Project Number 83-132	Sheet Number 13 OF 21
Date 5/1/84		Revisions 6/10/84 7/25/84 9/11/84	

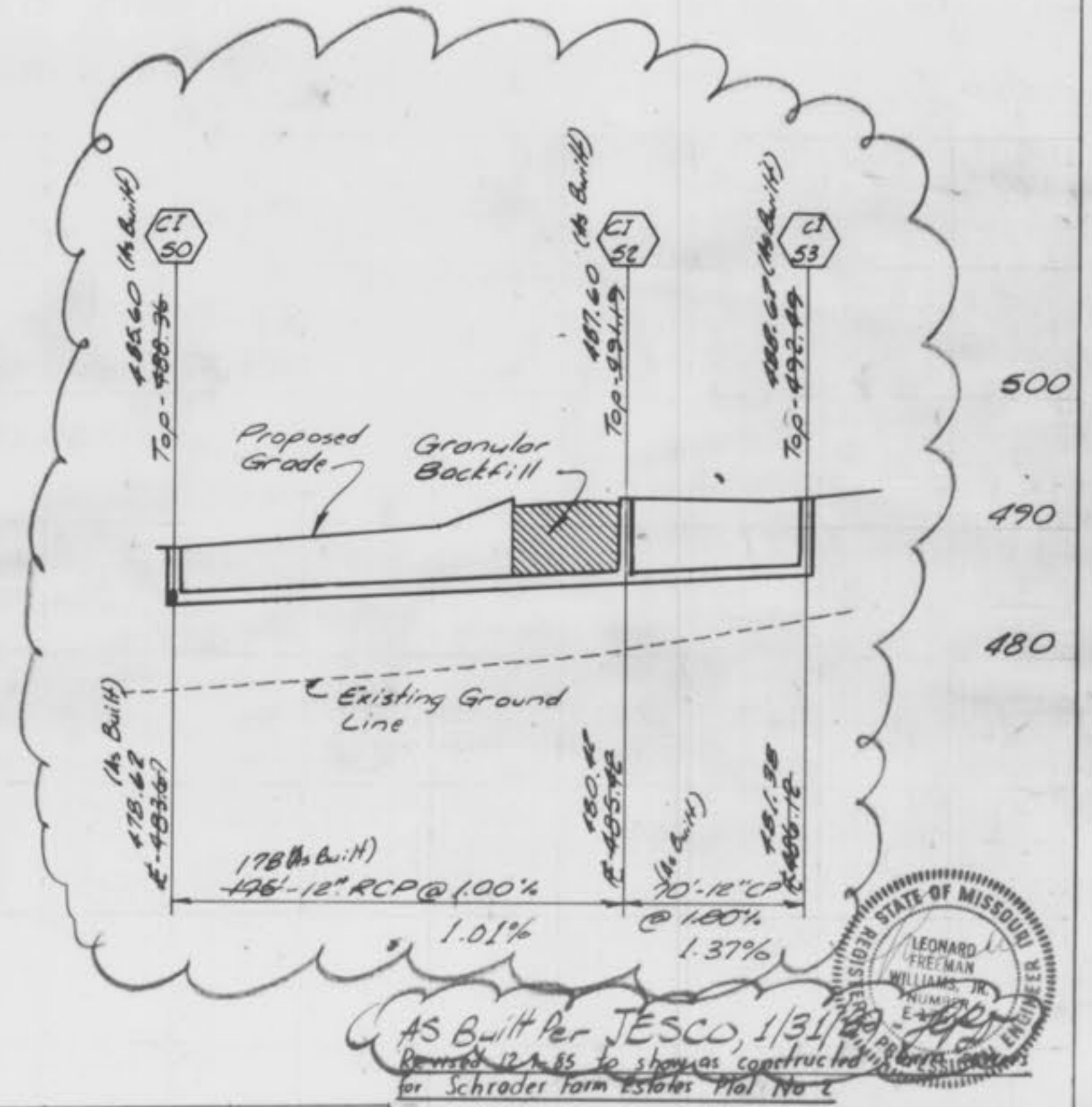
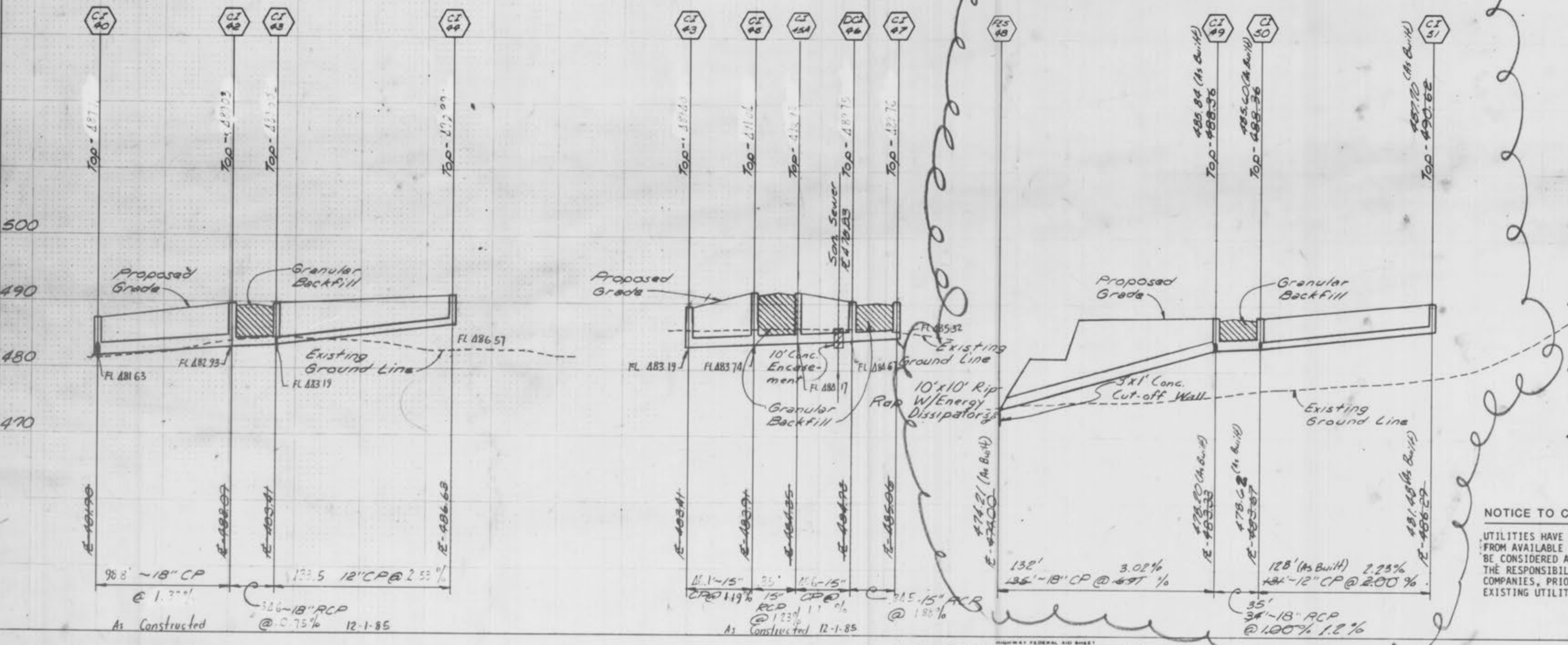
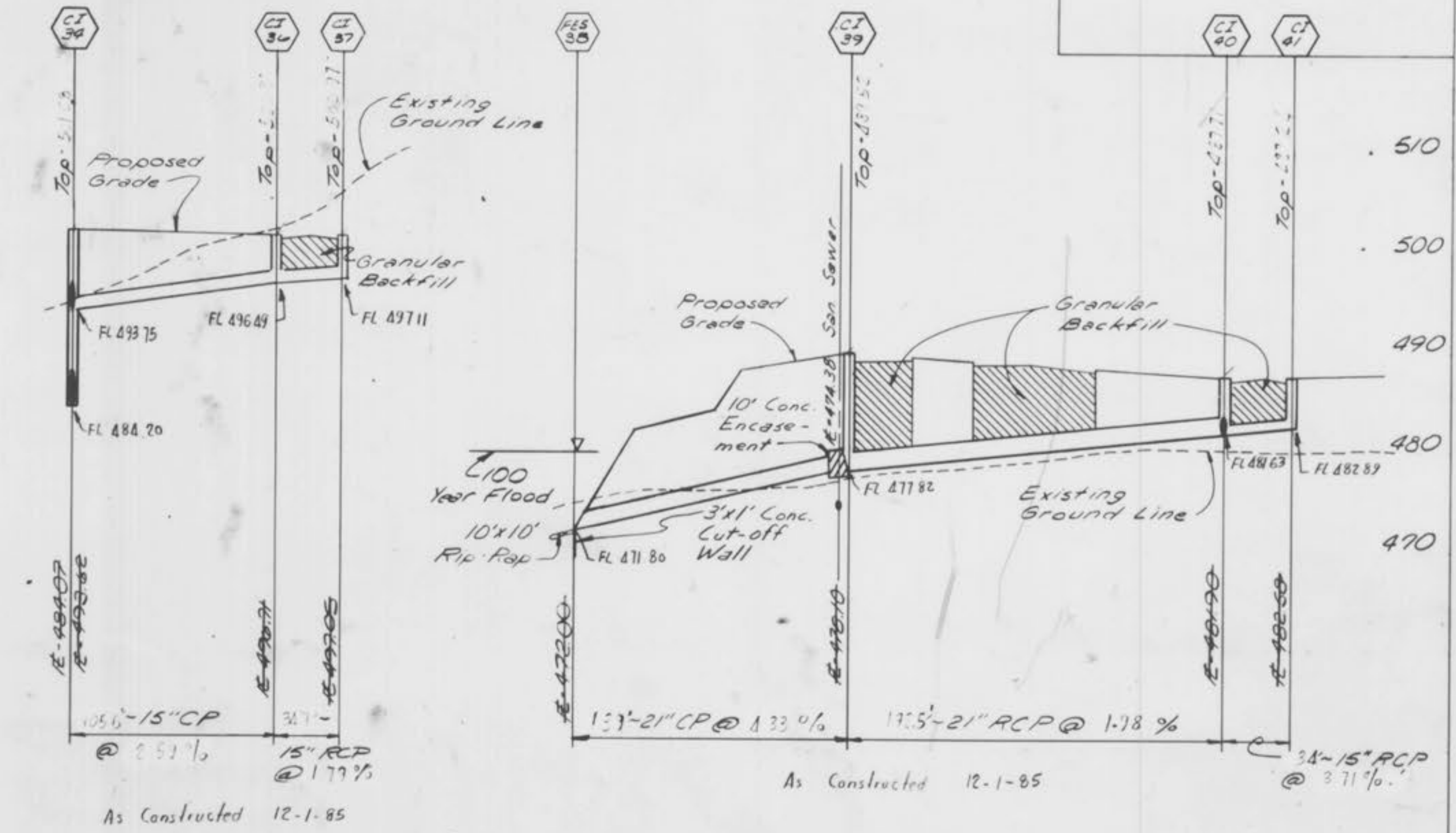
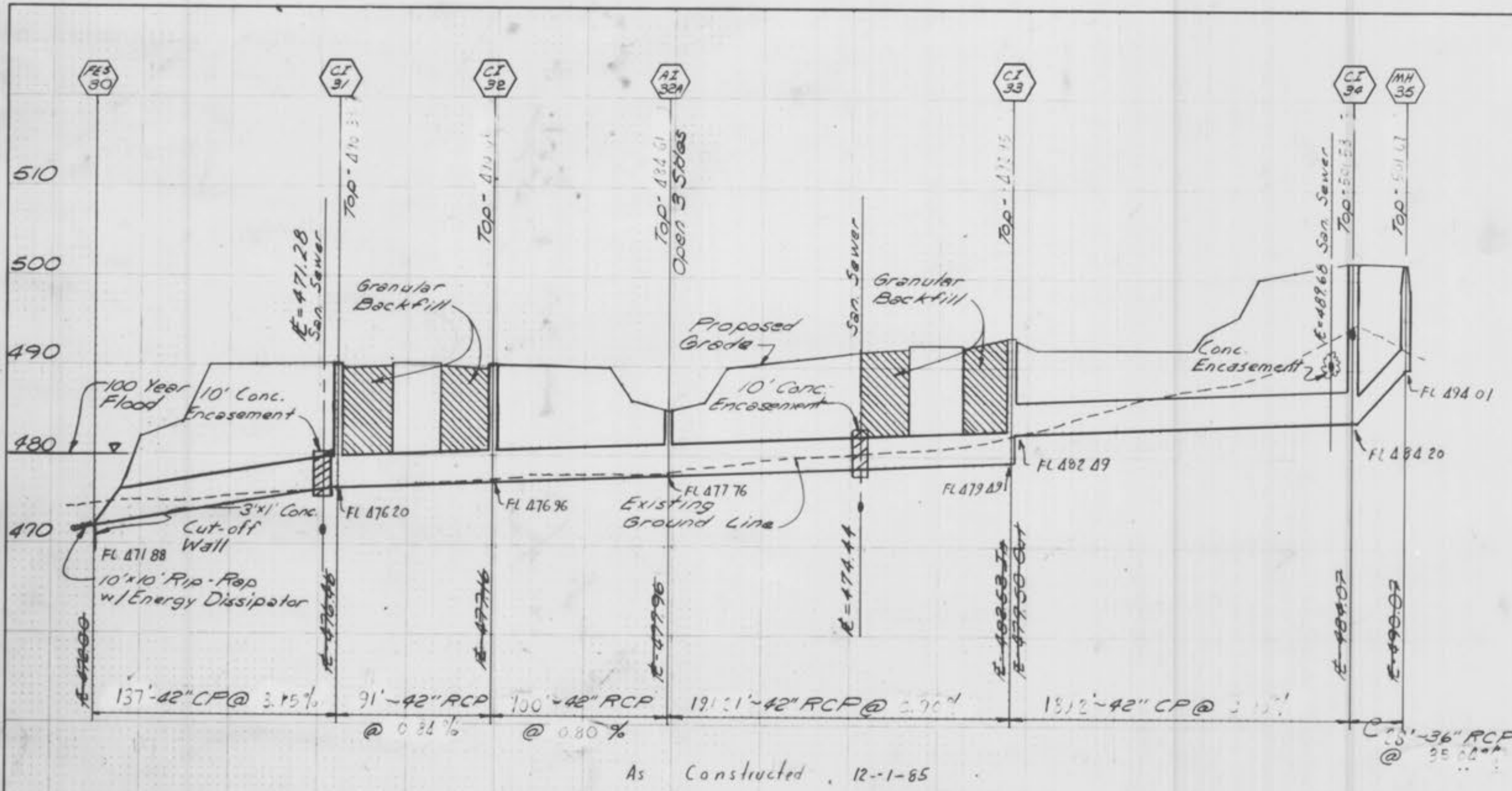
JAMES ENGINEERING & SURVEYING CO., INC.
 ENGINEERS PLANNERS SURVEYORS
 780 FORSYTH BLDG. SUITE 300 FARMINGTON, CT 06030
 (203) 787-4000 FAX (203) 787-8824
 LICENSE NO. E-17514

PLATE 3-FULL CROSS SECTION-FULL DOT
 WILSONE
 PRINTED IN U.S.A.

PROPERTY OF
 CITY OF BOSTON
 BILLING DEPARTMENT

DATE
BY
REVISIONS
NO. DATE
1. INVARIANT
2. PLOTTED
3. TEMPLATE
4. NOTE BOOK
5. AREA CHECKED

DATE
BY
REVISIONS
NO. DATE
1. INVARIANT
2. PLOTTED
3. TEMPLATE
4. NOTE BOOK
5. AREA CHECKED



JAMES ENGINEERING & SURVEYING CO., INC.
7810 FORSYTH BLVD. SUITE 300 ST. LOUIS, MO. 63105
(314) 727-4008 (314) 727-4524

SCHRADER FARM ESTATES
STORM SEWER PROFILES

NOTICE TO CONTRACTOR
UTILITIES HAVE BEEN LOCATED BY THE ENGINEER FROM AVAILABLE RECORDS. THEIR LOCATIONS SHOULD BE CONSIDERED APPROXIMATE. THE CONTRACTOR HAS THE RESPONSIBILITY TO NOTIFY ALL UTILITY COMPANIES, PRIOR TO CONSTRUCTION, TO HAVE EXISTING UTILITIES FIELD LOCATED.

Scale: 1"=10' Vert
1"=50' Horiz.

Drawn By GJP	Checked By SMB	Project Number 83-132	Sheet Number 14 OF 21
Date 5/1/84	Revisions 6/14/84 7/25/84		

PLATE 3-FULL CROSS SECTION-FULL DOT
DATE 12-1-85

PROPERTY OF
CITY OF FALLON
BUILDING DEPARTMENT

SCHRADER FARM ESTATES AB