

**GENERAL NOTES**

- All existing underground utilities and services that are to remain shall be protected throughout construction.
- Protection: Each contractor shall protect his excavations. All excavations shall be kept free of water and barricades maintained.
- Clean-up: General Contractor shall remove all debris from site and maintain the street building broom clean. Tools, equipment and scaffolding not in active use shall be removed from the site.
- Excavate to produce an undisturbed soil bearing surface at required levels. Remove all soft spots in subgrade and fill with compacted granular fill.
- Granular material: Deposit fill in 1 foot lifts and compact as specified for clayey materials. Pudding of granular material will not be permitted. Compact granular fill to not less than 95% of maximum density as determined by density tests.
- Any material excavated beneath sewer pipe entering or leaving manholes shall be replaced with concrete.
- All manhole rings and adjusting rings shall be set in mortar.
- All top, flowline and invert elevations shown have been established from the grading plan and/or topographic survey. The General Contractor shall verify all elevations upon grading completion to insure continuity with proposed and existing utilities.
- All construction and materials required shall conform to the City of O'Fallon standards.
- All storm and sanitary sewer and watermain trench backfills shall be water jetted. Compacted granular fill will be used under paved areas.

\* To be performed by Soils Engineer.

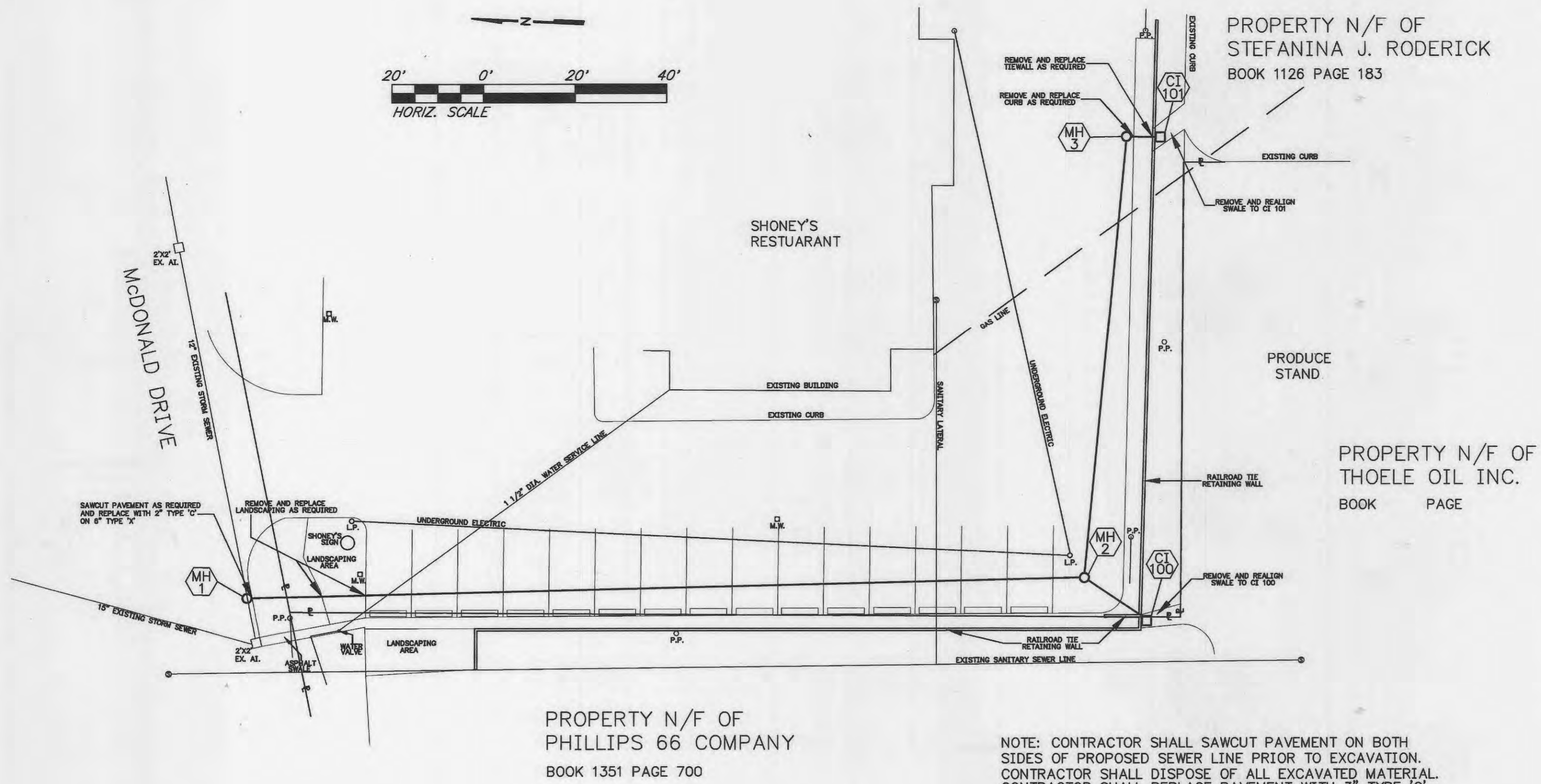
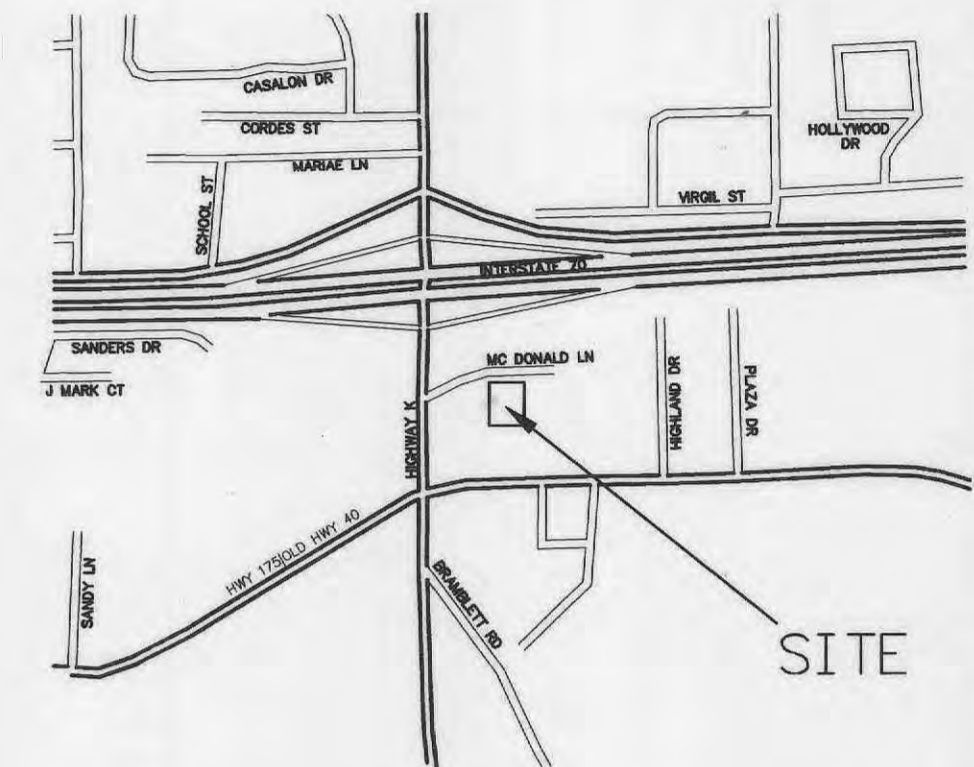
**UTILITY COMPANIES**

- TCL CABLE
- UNION ELECTRIC CO.
- GTE, INC. TELE.
- ST. CHARLES GAS CO.
- O'FALLON WATER & SEWER

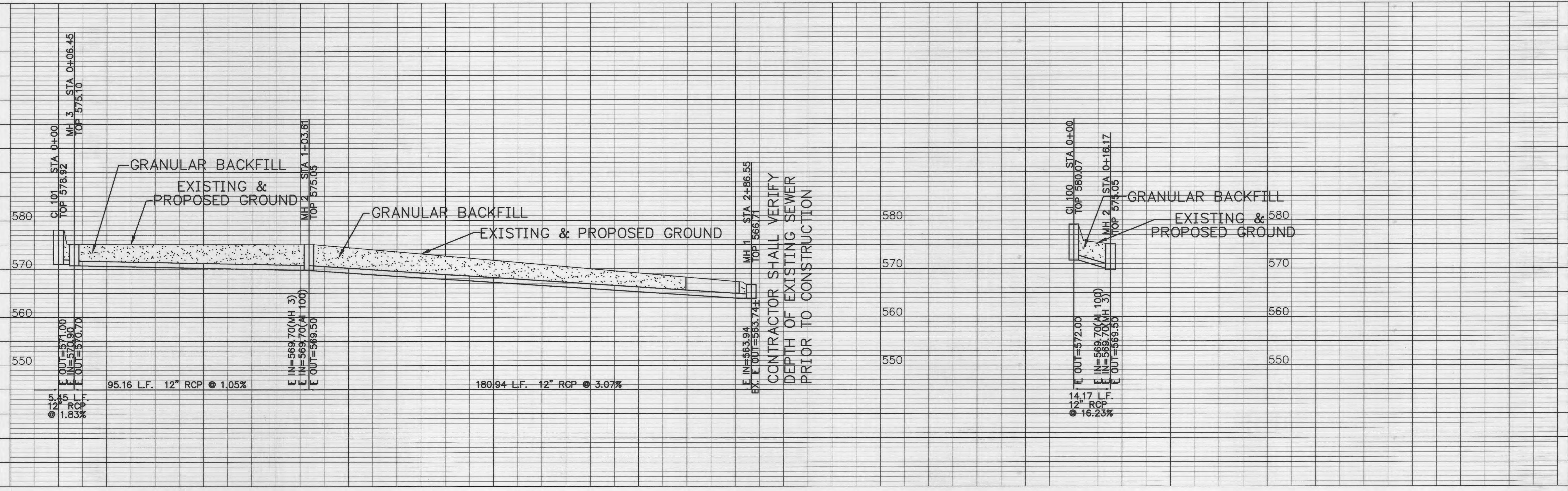
Note: Existing underground and overhead utilities and drainage structures have been plotted from available information and their locations must be considered approximate only. It is the responsibility of the Contractor to notify the utility companies and to verify the locations of existing utilities before actual construction begins. Any discrepancies noted must be reported to the Engineer immediately.

LEGEND	
○	POWER POLE
○	LIGHT POLE
⊙	MONITORING WELL
●	SANITARY MANHOLE

<b>GBA</b> GEORGE BUTLER ASSOCIATES, INC. <small>Engineers / Architects / Landscape Architects / Planners</small> Kansas City, Mo. / Lenexa, Ks. / O'Fallon, Mo. / Ames, Ia. / Oklahoma City, Ok.	DATE: OCTOBER 1995
	DESIGN BY: JJC
	DRAWN BY: BMS
PROJECT NO.: 7555	SHEET NO. 1
	TOTAL SHEETS 2
REVISIONS BY DATE	



NOTE: CONTRACTOR SHALL SAWCUT PAVEMENT ON BOTH SIDES OF PROPOSED SEWER LINE PRIOR TO EXCAVATION. CONTRACTOR SHALL DISPOSE OF ALL EXCAVATED MATERIAL. CONTRACTOR SHALL REPLACE PAVEMENT WITH 3" TYPE 'C' AND SHALL STRIPE NEW PAVEMENT TO MATCH EXISTING.



Shoney's