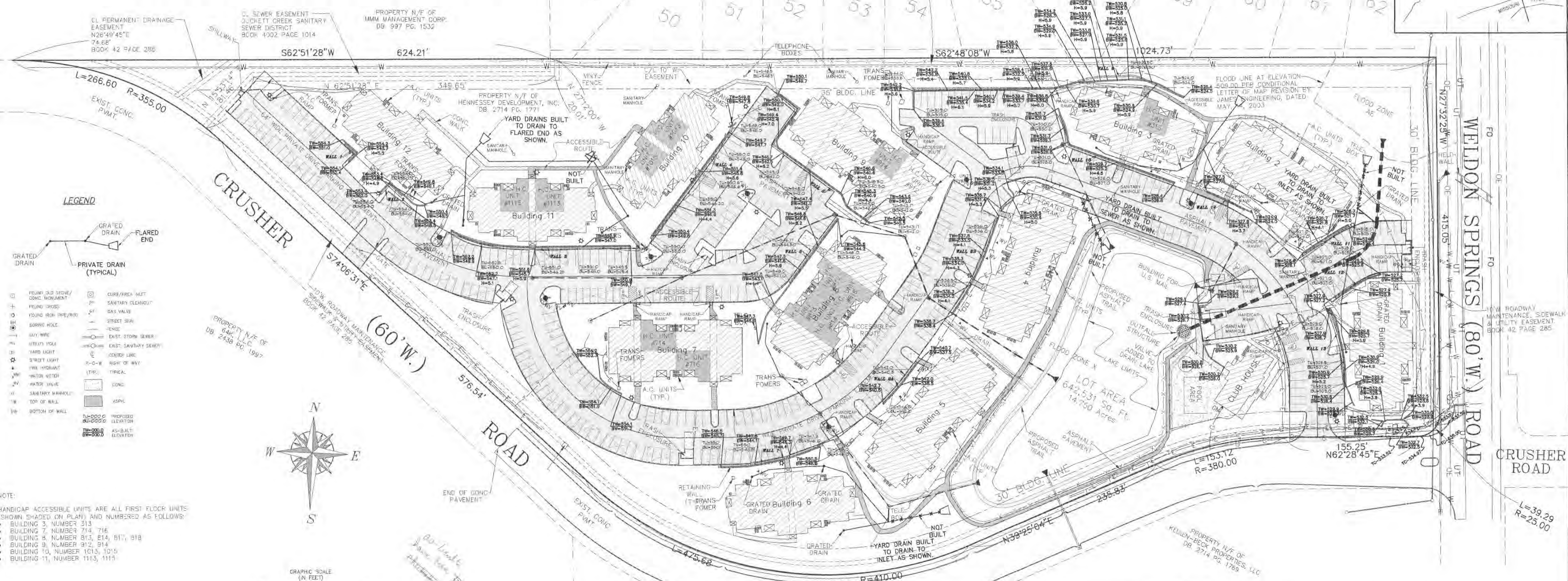
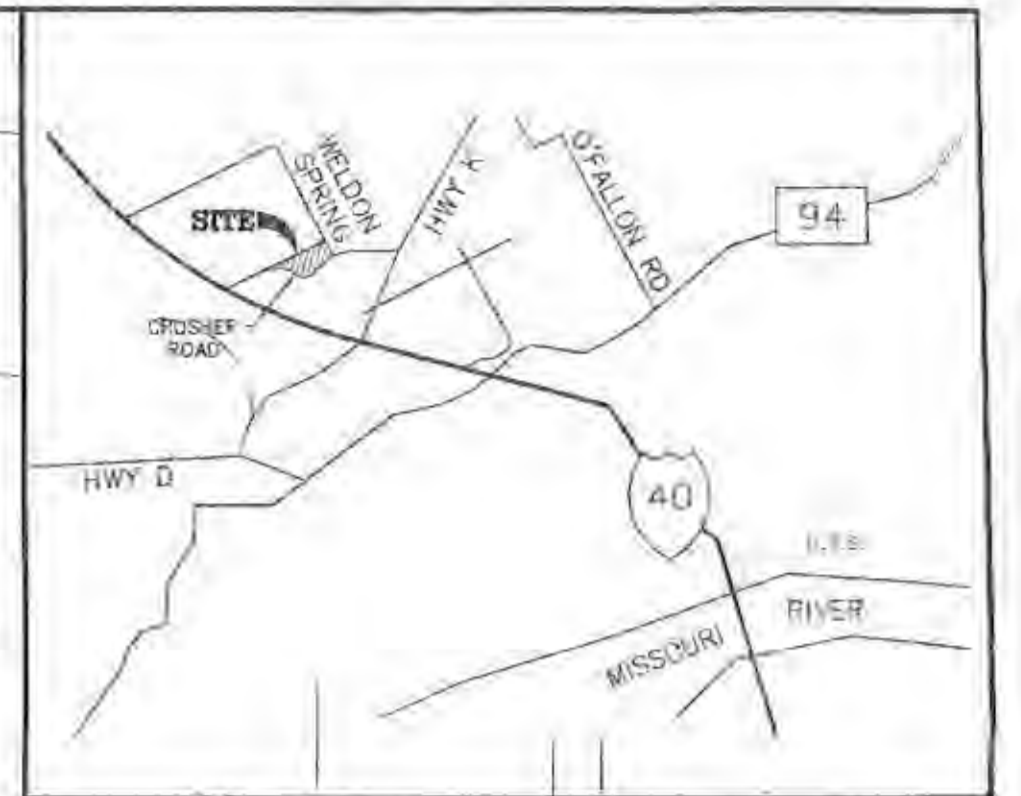


AS-BUILT SITE PLAN OF SOUTHERNSIDE APARTMENTS

CITY OF O'FALLON, ST. CHARLES COUNTY, MISSOURI TRACT IN U.S. SURVEY 1669,
TOWNSHIP 46 NORTH, RANGE 3 EAST A TRACT OF LAND BEING PART OF LOT 24 OF
JOHN COALTER'S SUBDIVISION OF HOWELL'S PRAIRIE

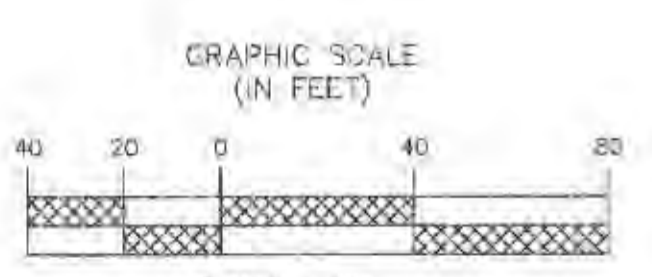
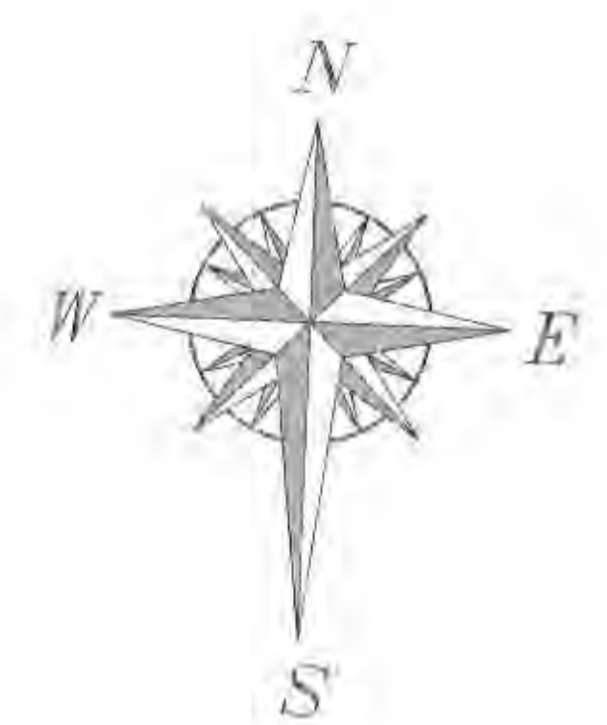
VALLEYBROOK (50'W.) COURT

VALLEYBROOK
(50'W.) DRIVE



LEGEND

- Grated Drain
- Private Drain (Typical)
- Flared End
- Found Old Stone/Concrete Monument
- Found Cross
- Found Iron Pipe/Post
- Boring Hole
- Utility Pole
- Street Light
- Fire Hydrant
- Water Meter
- Water Valve
- Sanitary Manhole
- Top of Wall
- Bottom of Wall
- Clubs/Area Meet
- Sanitary Cleanout
- Gas Valve
- Street Sign
- Exist. Storm Sewer
- Exist. Sanitary Sewer
- Center Line
- Right of Way
- Typical
- Proposed Elevation
- As-Built Elevation



NOTE:
HANDICAP ACCESSIBLE UNITS ARE ALL FIRST FLOOR UNITS (SHOWN SHADED ON PLAN) AND NUMBERED AS FOLLOWS:
• BUILDING 3, NUMBER 313
• BUILDING 7, NUMBER 714, 716
• BUILDING 8, NUMBER 813, 814, 817, 818
• BUILDING 9, NUMBER 912, 914
• BUILDING 10, NUMBER 1013, 1015
• BUILDING 11, NUMBER 1113, 1115

PREPARED FOR:
HENNESSEY DEVELOPMENT
9904 CLAYTON RD.
SUITE 122
ST. LOUIS, MO. 63124
PH. (314) 991-1248
FAX (314) 991-0964

REVISION DATE: 11/14/2008

| | | | |
|--------------------|--|------------------|---------|
| DRAWN BY: E.G.H. | | ORDER NO. 09-154 | SHEET 7 |
| CHECKED BY: M.A.S. | | DATE: 04/08/2008 | |



RECEIVED NOV 18 2008