

# WINGHAVEN™

## WINGHAVEN™ RESIDENTIAL L.L.C.

### SPY GLASS HILL SEWER AS-BUILTS

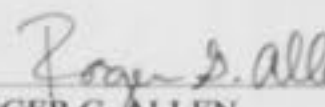
The existing sewer lengths, sizes, flowlines, depths of structures and sewers and locations with respect to existing or proposed easements have been measured. The results of those measurements are shown on this set of Final Measurement Plans. Since the wye locations have been plotted from information provided by the sewer contractor or other sources, I disclaim any responsibility for that specific information.

All public sewers are located within designated existing or proposed easements except as shown in this drawing.

The results of those measurements are shown on this drawing by lining out the planned number and indicating the measured number adjacent to the planned number. All other numbers shown have not been measured or verified.

The location of the sewers were determined by locating the manholes and traversing in a straight line between them.

No hydraulic computations have been done on the measured lines to verify or confirm the capacity, freeboard or design requirements of the sewers.

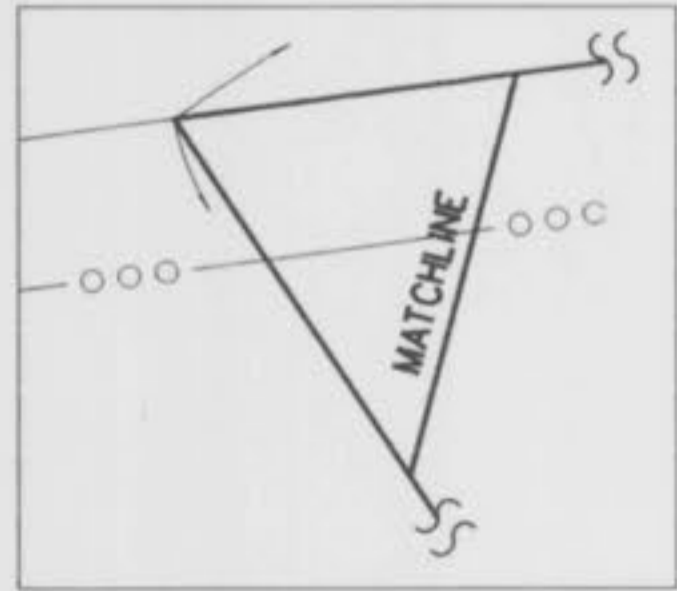
  
ROGER G. ALLEN  
MO. REG. L.S. NO. 2185



  
**VOLZ**  




Scale in Feet  
1" = 50'



PROPERTY N/F OF  
NOVUS PROPERTY HOLDINGS, L.L.C.  
1953/436

NO 18 IN. HIGH WATER



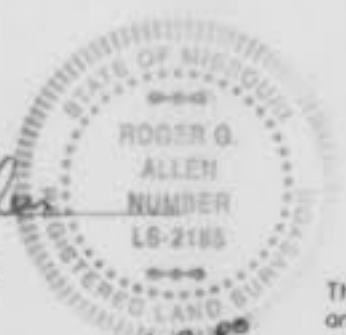
COMMON  
GROUND  
AND  
EASEMENT

PROPERTY N/F OF  
WINGHAVEN RESIDENTIAL, L.L.C.  
2012/1714

The Common Ground of this site has areas within the 100 Year Flood Plain per FIRM Map No. 29183C0430 E, dated August 2, 1996.

STORMWATER DETENTION FOR WINGHAVEN WILL BE PROVIDED IN SEVERAL DETENTION PONDS WITHIN THE DEVELOPMENT. VOLZ, INC. IS PREPARING A DETENTION STUDY FOR ALL OF WINGHAVEN WHICH WILL SHOW HOW DETENTION IS PROVIDED FOR EACH PHASE OF THE DEVELOPMENT.

*Roger G. Allen*  
ROGER G. ALLEN  
MO. REG. L.S. NO. 2185



The underground utilities shown herein were plotted from available information and do not necessarily reflect the actual existence, or nonexistence, size, type, number, or location of these or other utilities. The general contractor shall be responsible for verifying the actual location of all underground utilities in the field, shown or not shown, prior to any grading, excavation, or construction of improvements. These provisions shall in no way absolve any party from complying with the Underground Facility Safety and Damage Prevention Act, Chapter 319, RSMo.

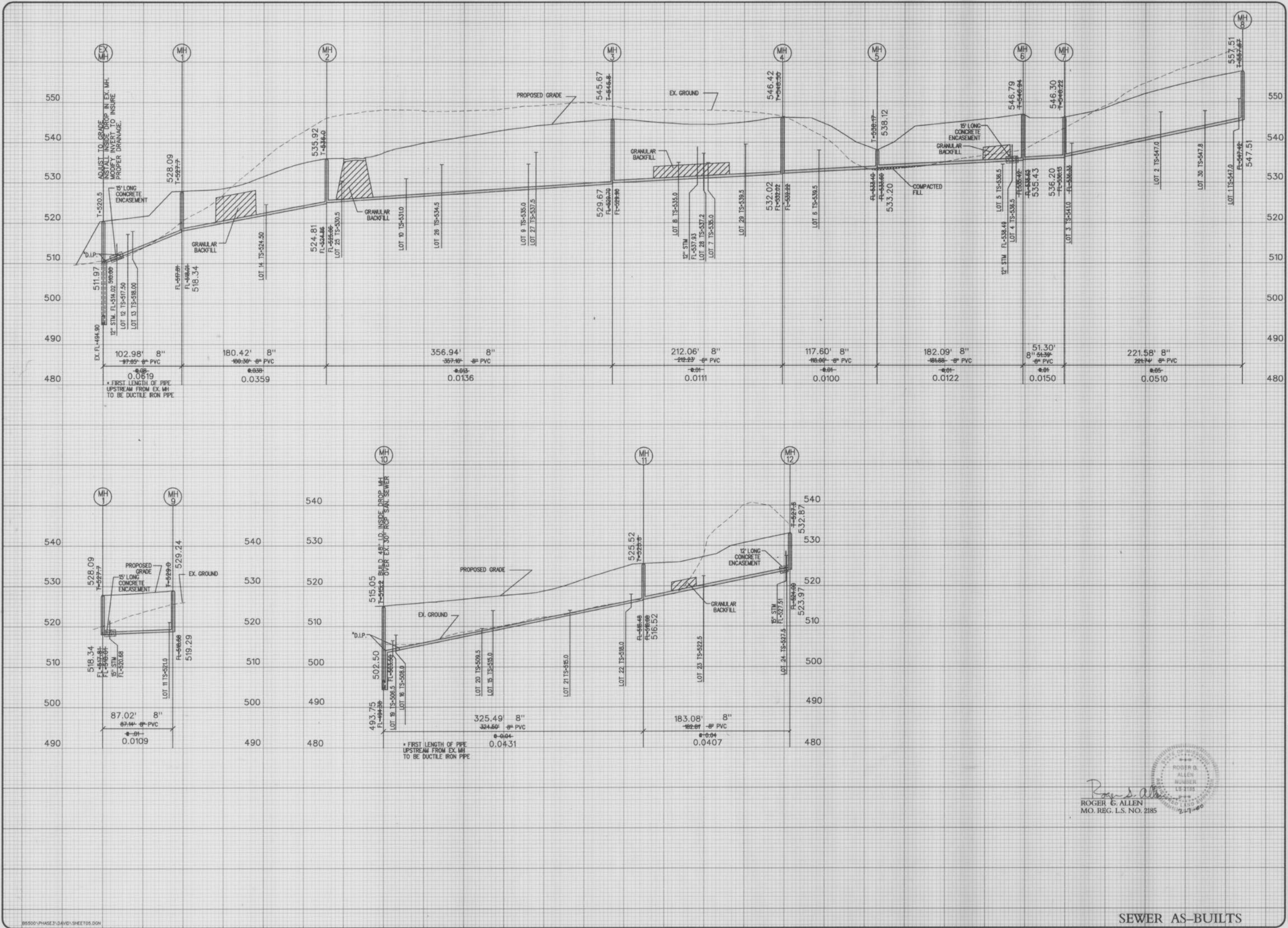
SEWER AS-BUILTS

WINGHAVEN  
RESIDENTIAL L.L.C.  
\*MICROBE & SON  
CORPORATE CENTER DRIVE  
ST. LOUIS, MISSOURI 63005  
PHONE: (314) 537-2000



# SPY GLASS HILL AT WINGHAVEN

SITE PLAN	Design By: C.L.	Checked By: T.J.M.
	Drawn By: C.L.	
	B-5000-43	



WINGHAVEN  
RESIDENTIAL L.L.C.  
\* MCGROE & SON  
CORPORATE CENTER DRIVE  
ST. LOUIS, MISSOURI 63005  
PHONE (314) 537-2000

**VOLZ**

SPY GLASS HILL  
AT WINGHAVEN

SPY GLASS HILL  
AT WINGHAVEN

SPY GLASS HILL  
AT WINGHAVEN

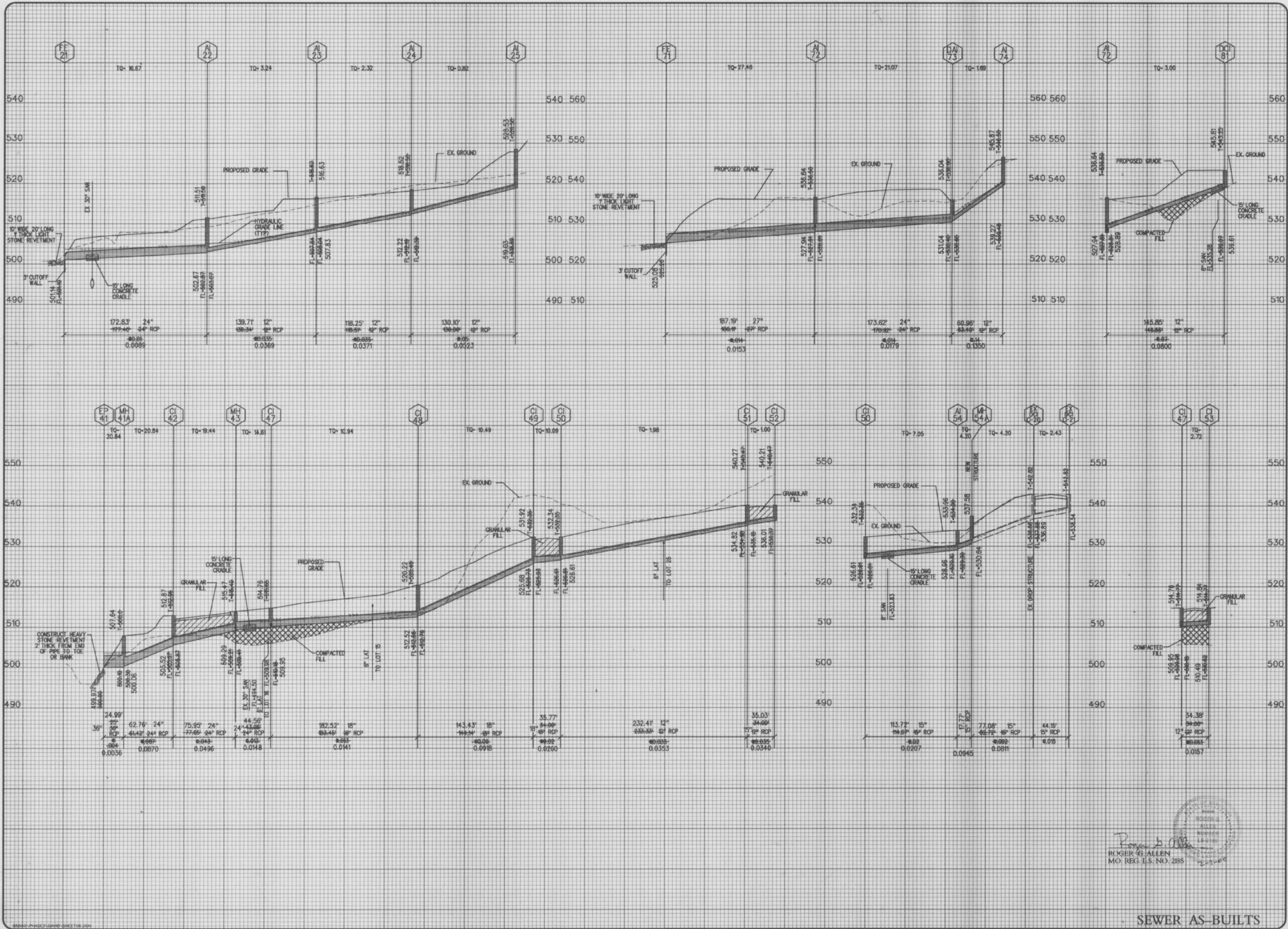
SPY GLASS HILL  
AT WINGHAVEN

SANITARY SEWER  
PROFILES

05

ROGER G. ALLEN  
MO. REG. L.S. NO. 2185  
2.17.00

SEWER AS-BUILTS

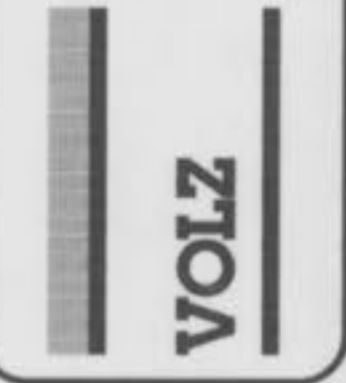


SPY GLASS HILL  
AT WINGHAVEN

ROGER G. ALLEN  
MO. REG. L.S. NO. 2185

5/8" = 1' SCALE

WINGHAVEN  
RESIDENTIAL L.L.C.  
11 MCBRIDE & SON  
CORPORATE CENTER DRIVE  
SHELBYVILLE, MISSISSIPPI 38676  
PHONE (731) 537-2000



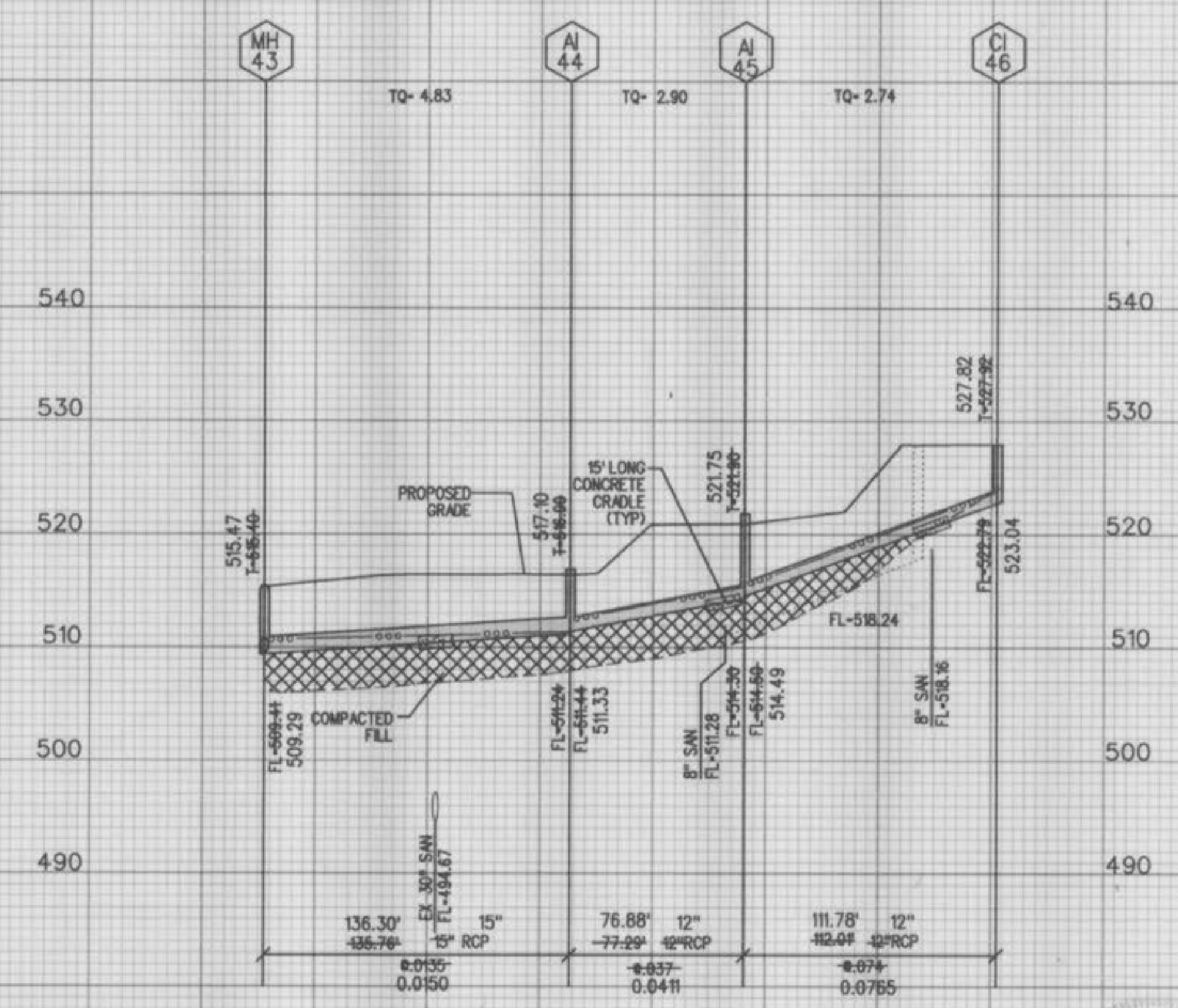
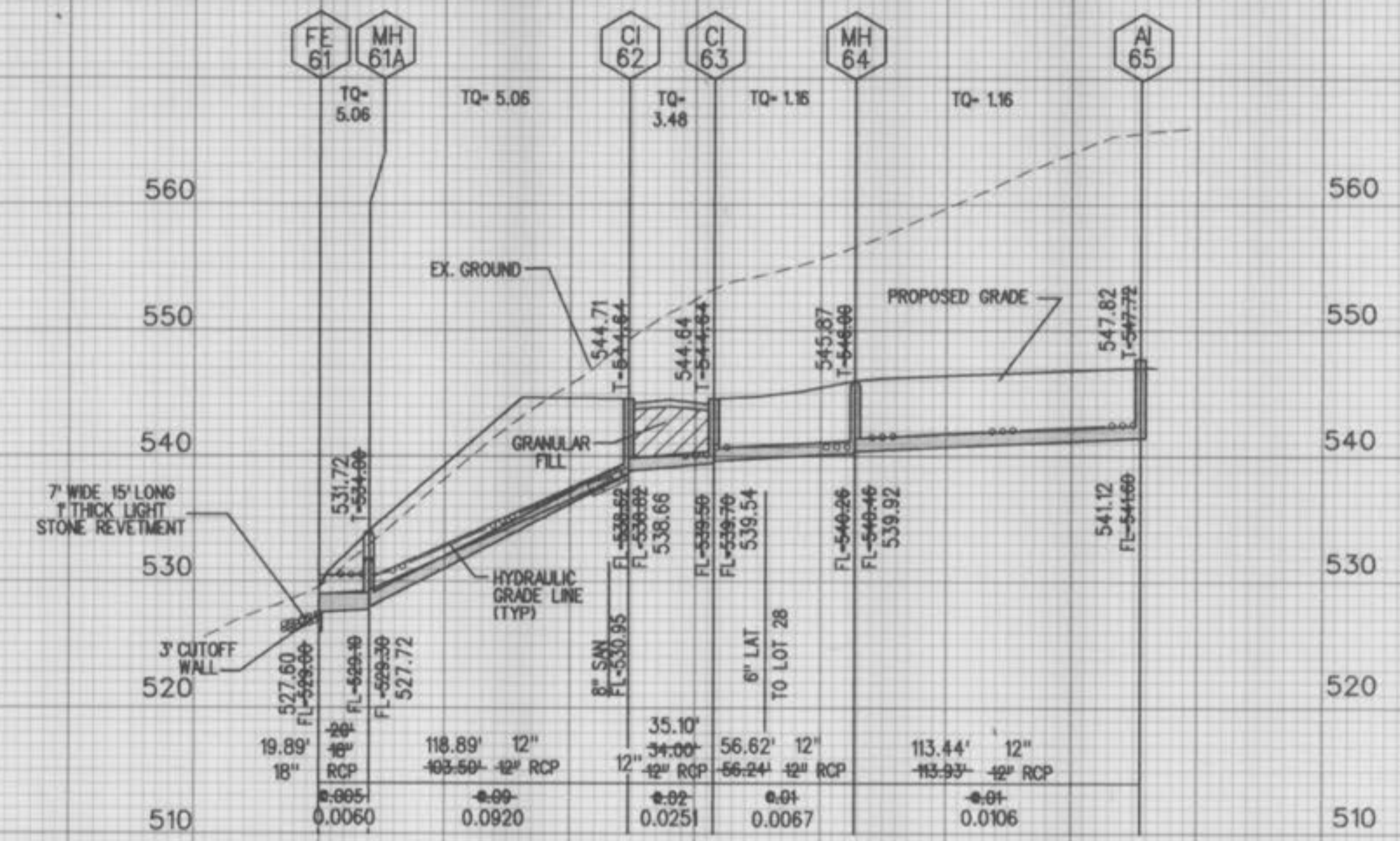
# SPY GLASS HILL AT WINGHAVEN

STORM SEWER  
PROFILES

Design By: C.L.  
Drawn By: C.L.  
Checked By: T.J.M.

B-5500-43

09-17-99  
07



ROGER G. ALLEN  
 MO. REG. L.S. NO. 2185  
 2-7-99

SEWER AS-BUILTS