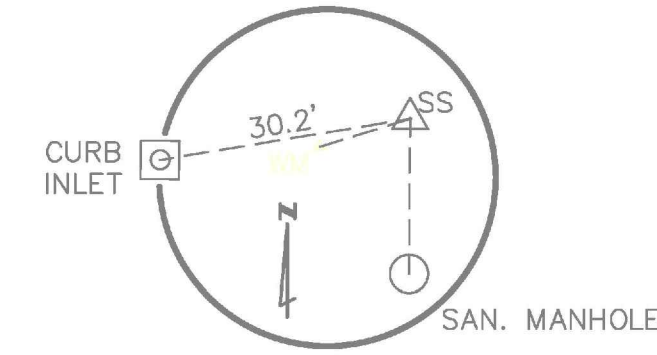
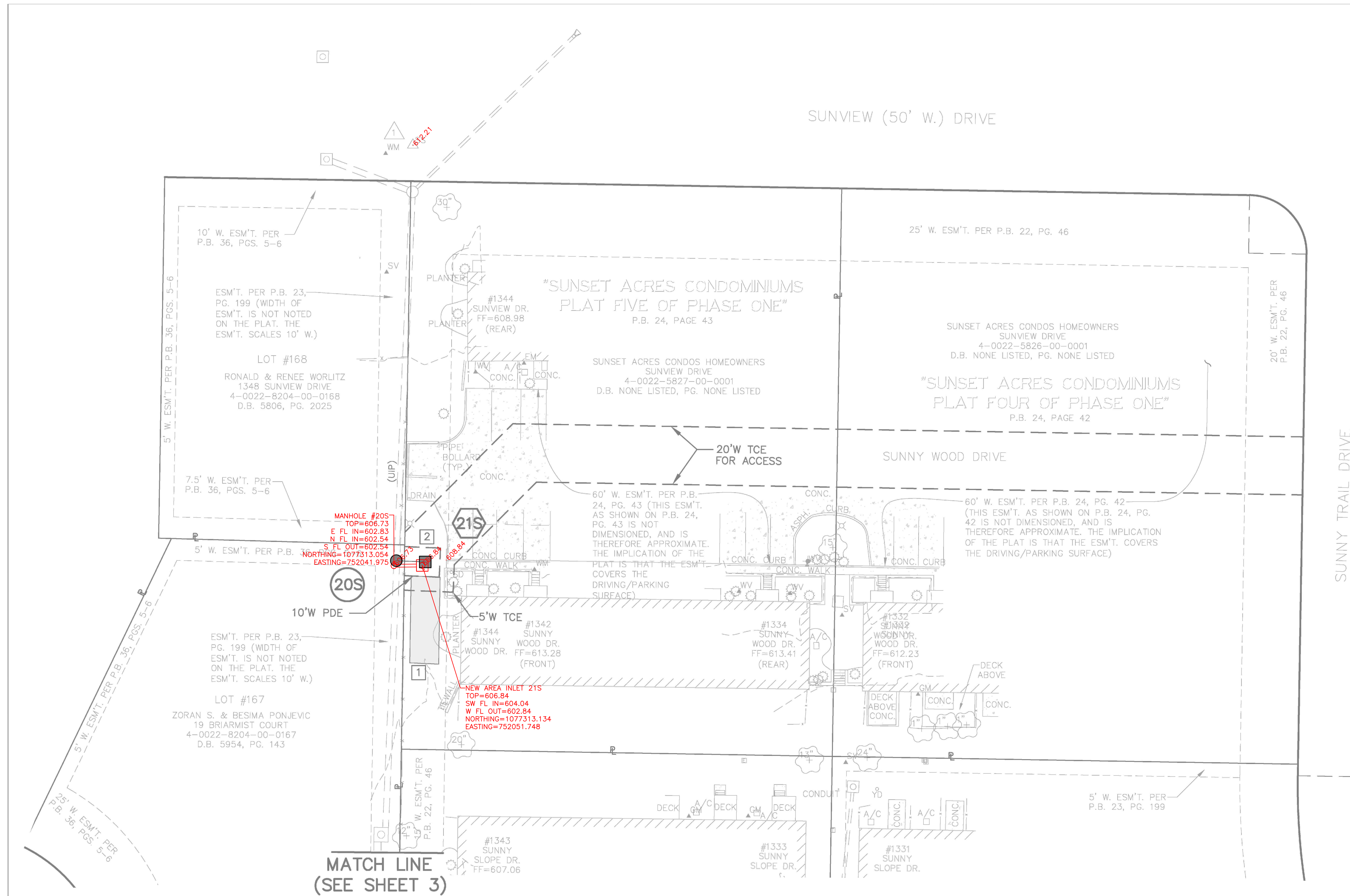


SUNSET ACRES AS-BUILT (PLAN 1)



REFERENCE TIE
CONTROL POINT #1
CROSS
N 1077458.251-1077458.245
E 752048.431-752048.596
ELEV 612.1612.20
NOT TO SCALE

SCALE: 1"=20'
0 10 20



FISCHER GRADING
SUNSET ACRES CONDOS
STORM WATER IMPROVEMENTS
CITY OF FALLON, MISSOURI

REVISIONS	
1	
By:	App:
2	
By:	App:
3	
By:	App:
4	
By:	App:

POINT TABLE			
CONTROL POINT #	NORTHING	EASTING	DESCRIPTION
1	1077458.251	752048.431	CROSS
	1077458.245	752048.596	

NEW STRUCTURE TABLE				
PT. #	I.D.	NORTHING	EASTING	DESCRIPTION
21S	21S	1077314.386	752052.746	NEW AREA INLET
20S	20S	1077314.769	752042.806	NEW MANHOLE
21S	21S	1077313.134	752051.748	AS BUILT NEW AREA INLET
20S	20S	1077313.054	752041.975	AS BUILT NEW MANHOLE

EXISTING STRUCTURE TABLE					
PT. #	I.D.	NORTHING	EASTING	DESCRIPTION	
1460	1460	1077219.754	752037.922	EX AREA INLET	
5845	5845	1077236.805	752000.635	EX AREA INLET	
6275	6275	1077442.061	752048.290	EX MANHOLE	
6280	6280	1077453.320	752018.659	EX CURB INLET	
6281	6281	1077488.707	752017.308	EX AREA INLET	
6284	6284	1077496.145	752104.532	EX END OF PIPE	

- KEYED NOTES:
- 1 PERMANENT EROSION CONTROL WITH REINFORCED TURF. (10' WIDE x 30' LONG). MATCH EXISTING GRADE.
 - 2 GRADE TO FORM A SUMP AROUND INLET: 12 INCHES DEEP, 8' TO 12' DIAMETER.

Bearings referenced to Grid North of Missouri Coordinate System 1983 East Zone and elevations referenced to NAVD 1988 per GPS observation utilizing MoDOT VRS RTK Network (US Foot).

AS-BUILT PLANS PREPARED BY:

John B. Schebaum
John B. Schebaum, P.E. #2020000083
State of Missouri
Registered Professional Engineer
for BFA, Inc. Professional Engineer Corporation #000472

06/21/21
Date

bfaeng.com TELEPHONE: (636) 239-4751

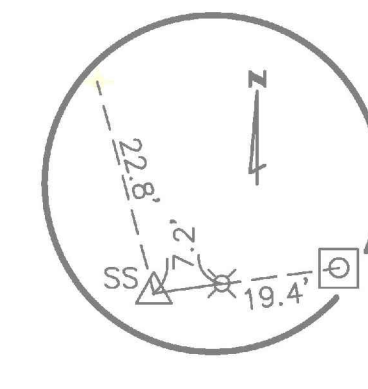
BFA
Engineering-Surveying

103 ELM STREET WASHINGTON, MISSOURI 63090

DRAWN G.W.C.
CHECKED J.B.S.
DATE 06/21/21
SCALE 1"=20'
JOB No. 6442
SHEET NAME AS-BUILT-1
AB-1

F:\Vault\6442_Sunset Acres As Built_Fischer Grading\6442_Base Plans\6442_Topobase.dwg 6/18/2021 11:29 AM

SUNSET ACRES AS-BUILT (PLAN 2)

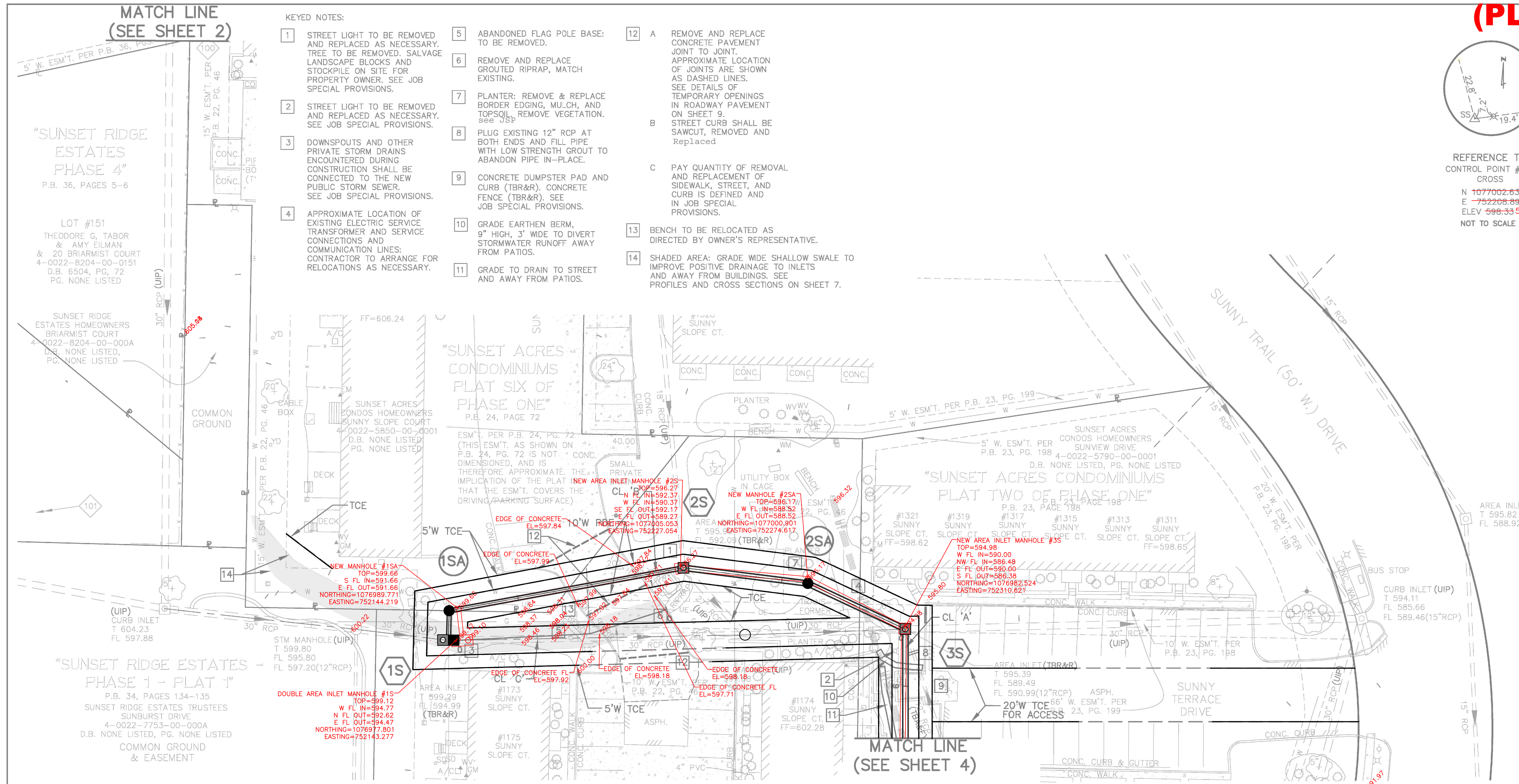


REFERENCE TIE
CONTROL POINT #202
CROSS
N 1077002.639 1077002.752
E 752208.893 752208.822
ELEV 598.33 598.42
NOT TO SCALE

SCALE: 1"=20'
0 10 20

KEYED NOTES:

- 1 STREET LIGHT TO BE REMOVED AND REPLACED AS NECESSARY. TREE TO BE REMOVED. SALVAGE LANDSCAPE BLOCKS AND STOCKPILE ON SITE FOR PROPERTY OWNER. SEE JOB SPECIAL PROVISIONS.
- 2 STREET LIGHT TO BE REMOVED AND REPLACED AS NECESSARY. SEE JOB SPECIAL PROVISIONS.
- 3 DOWNSPOUTS AND OTHER PRIVATE STORM DRAINS ENCOUNTERED DURING CONSTRUCTION SHALL BE CONNECTED TO THE NEW PUBLIC STORM SEWER. SEE JOB SPECIAL PROVISIONS.
- 4 APPROXIMATE LOCATION OF EXISTING ELECTRIC SERVICE TRANSFORMER AND SERVICE CONNECTIONS AND COMMUNICATION LINES. CONTRACTOR TO ARRANGE FOR RELOCATIONS AS NECESSARY.
- 5 ABANDONED FLAG POLE BASE: TO BE REMOVED.
- 6 REMOVE AND REPLACE GROUTED RIPRAP, MATCH EXISTING.
- 7 PLANTER: REMOVE & REPLACE BORDER EDGING, MULCH, AND TOPSOIL. REMOVE VEGETATION. SEE US&
- 8 PLUG EXISTING 12" RCP AT BOTH ENDS AND FILL PIPE WITH LOW STRENGTH GROUT TO ABANDON PIPE IN-PLACE.
- 9 CONCRETE DUMPSTER PAD AND CURB (TBR&R). CONCRETE FENCE (TBR&R). SEE JOB SPECIAL PROVISIONS.
- 10 GRADE EARTHEN BERM, 9" HIGH, 3' WIDE TO DIVERT STORMWATER RUNOFF AWAY FROM PATIOS.
- 11 GRADE TO DRAIN TO STREET AND AWAY FROM PATIOS.
- 12 A REMOVE AND REPLACE CONCRETE PAVEMENT JOINT TO JOINT. APPROXIMATE LOCATION OF JOINTS ARE SHOWN AS DASHED LINES. SEE DETAILS OF TEMPORARY OPENINGS IN ROADWAY PAVEMENT ON SHEET 9.
B STREET CURB SHALL BE SAWCUT, REMOVED AND Replaced
C PAY QUANTITY OF REMOVAL AND REPLACEMENT OF SIDEWALK, STREET, AND CURB IS DEFINED AND IN JOB SPECIAL PROVISIONS.
- 13 BENCH TO BE RELOCATED AS DIRECTED BY OWNER'S REPRESENTATIVE.
- 14 SHADED AREA: GRADE WIDE SHALLOW SWALE TO IMPROVE POSITIVE DRAINAGE TO INLETS AND AWAY FROM BUILDINGS. SEE PROFILES AND CROSS SECTIONS ON SHEET 7.



FISCHER GRADING
SUNSET ACRES CONDOS
STORM WATER IMPROVEMENTS
CITY OF FALLON, MISSOURI

REVISIONS	
	App:
	App:
	App:
	App:

POINT TABLE			
CONTROL POINT #	NORTHING	EASTING	DESCRIPTION
100	1077202.470	752043.684	IRON ROD W/ CAP
101	1077016.267	751923.788	IRON ROD W/ CAP
202	1077002.639	752208.893	CROSS
	1077002.752	752208.822	

EXISTING STRUCTURE TABLE				
PT. #	I.D.	NORTHING	EASTING	DESCRIPTION
1180	1180	1076982.183	752105.821	EX MANHOLE
1404	1404	1076989.878	752034.299	EX CURB INLET
2951	2951	1076986.234	752481.514	EX CURB INLET
2956	2956	1077023.393	752520.436	EX AREA INLET
2959	2959	1077139.693	752381.811	EX CURB INLET
4057	4057	1076982.249	752311.039	EX AREA INLET
4316	4316	1076978.041	752140.342	EX CURB INLET
4705	4705	1076980.124	752251.198	EX AREA INLET
4788	4788	1077005.208	752228.158	EX AREA INLET
5057	5057	1077122.260	752217.612	EX CURB INLET
5534	5534	1077186.712	752195.343	EX AREA INLET
6491	6491	1077172.357	752419.575	EX AREA INLET

NEW STRUCTURE TABLE				
PT. #	I.D.	NORTHING	EASTING	DESCRIPTION
1S	1S	1076978.079	752142.342	NEW DOUBLE AREA INLET MANHOLE
1SA	1SA	1076989.153	752140.618	NEW MANHOLE
2S	2S	1077005.213	752228.157	NEW AREA INLET MANHOLE
2SA	2SA	1076999.340	752274.619	NEW MANHOLE
3S	3S	1076982.249	752311.039	NEW AREA INLET MANHOLE

AS-BUILT STRUCTURE TABLE			
I.D.	NORTHING	EASTING	DESCRIPTION
1S	1076977.801	752143.277	NEW DOUBLE AREA INLET MANHOLE
1SA	1076989.771	752144.219	NEW MANHOLE
2S	1077005.053	752227.054	NEW AREA INLET MANHOLE
2SA	1077000.901	752274.617	NEW MANHOLE
3S	1076982.524	752310.621	NEW AREA INLET MANHOLE

Bearings referenced to Grid North of Missouri Coordinate System 1983 East Zone and elevations referenced to NAVD 1988 per GPS observation utilizing MoDOT VRS RTK Network (US Foot).

AS-BUILT PLANS PREPARED BY:

John B. Schebaum

JOHN B. SCHEBAUM
NUMBER PE-202000083
PROFESSIONAL ENGINEER

Date 06/21/21

John B. Schebaum, P.E. #202000083
State of Missouri
Registered Professional Engineer
for BFA, Inc. Professional Engineer Corporation #000472

bfaeng.com TELEPHONE: (636) 239-4751

BFA
Engineering-Surveying

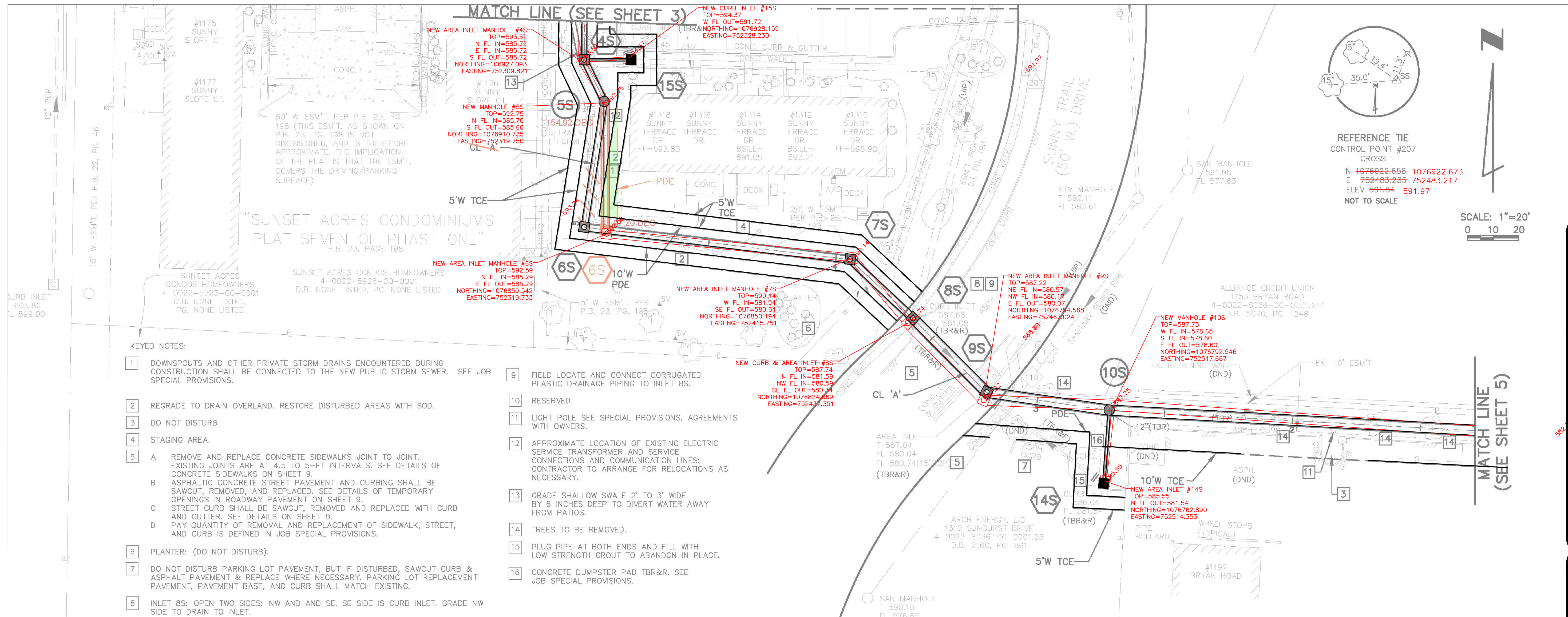
103 ELM STREET WASHINGTON, MISSOURI 63090

DRAWN G.W.C.
CHECKED J.B.S.
DATE 06/21/21
SCALE 1"=20'
JOB No. 6442
SHEET NAME AS-BUILT-2

AB-2

F:\Vault\6442_Sunset Acres As Built_Fischer Grading\6442_Base Plans\6442_Topobase.dwg 6/18/2021 11:29 AM

SUNSET ACRES AS-BUILT (PLAN 3)



KEYED NOTES:

- | | |
|--|--|
| <p>1 DOWNSPOUTS AND OTHER PRIVATE STORM DRAINS ENCOUNTERED DURING CONSTRUCTION SHALL BE CONNECTED TO THE NEW PUBLIC STORM SEWER. SEE JOB SPECIAL PROVISIONS.</p> <p>2 REGRADE TO DRAIN OVERLAND. RESTORE DISTURBED AREAS WITH SOD.</p> <p>3 DO NOT DISTURB</p> <p>4 STAGING AREA.</p> <p>5 A REMOVE AND REPLACE CONCRETE SIDEWALKS JOINT TO JOINT. EXISTING JOINTS ARE AT 4.5 TO 5-FT INTERVALS. SEE DETAILS OF CONCRETE SIDEWALKS ON SHEET 9.
 B ASPHALTIC CONCRETE STREET PAVEMENT AND CURBING SHALL BE SAWCUT, REMOVED, AND REPLACED. SEE DETAILS OF TEMPORARY OPENINGS IN ROADWAY PAVEMENT ON SHEET 9.
 C STREET CURB SHALL BE SAWCUT, REMOVED AND REPLACED WITH CURB AND GUTTER. SEE DETAILS ON SHEET 9.
 D PAY QUANTITY OF REMOVAL AND REPLACEMENT OF SIDEWALK, STREET, AND CURB IS DEFINED IN JOB SPECIAL PROVISIONS.</p> <p>6 PLANTER: (DO NOT DISTURB).</p> <p>7 DO NOT DISTURB PARKING LOT PAVEMENT, BUT IF DISTURBED, SAWCUT CURB & ASPHALT PAVEMENT & REPLACE WHERE NECESSARY. PARKING LOT REPLACEMENT PAVEMENT, PAVEMENT BASE, AND CURB SHALL MATCH EXISTING.</p> <p>8 INLET BS: OPEN TWO SIDES: NW AND AND SE. SE SIDE IS CURB INLET. GRADE NW SIDE TO DRAIN TO INLET.</p> | <p>9 FIELD LOCATE AND CONNECT CORRUGATED PLASTIC DRAINAGE PIPING TO INLET BS.</p> <p>10 RESERVED</p> <p>11 LIGHT POLE SEE SPECIAL PROVISIONS, AGREEMENTS WITH OWNERS.</p> <p>12 APPROXIMATE LOCATION OF EXISTING ELECTRIC SERVICE TRANSFORMER AND SERVICE CONNECTIONS AND COMMUNICATION LINES. CONTRACTOR TO ARRANGE FOR RELOCATIONS AS NECESSARY.</p> <p>13 GRADE SHALLOW SWALE 2' TO 3' WIDE BY 6 INCHES DEEP TO DIVERT WATER AWAY FROM PATIOS.</p> <p>14 TREES TO BE REMOVED.</p> <p>15 PLUG PIPE AT BOTH ENDS AND FILL WITH LOW STRENGTH GROUT TO ABANDON IN PLACE.</p> <p>16 CONCRETE DUMPSTER PAD TBR&R. SEE JOB SPECIAL PROVISIONS.</p> |
|--|--|

AS-BUILT STRUCTURE TABLE			
I.D.	NORTHING	EASTING	DESCRIPTION
4S	1076927.093	752309.821	NEW AREA INLET MANHOLE
5S	1076910.735	752319.750	NEW MANHOLE
6S	1076859.542	752319.733	NEW AREA INLET MANHOLE
7S	1076850.194	752415.751	NEW AREA INLET MANHOLE
8S	1076824.669	752437.351	NEW CURB & AREA INLET
9S	1076794.568	752467.024	NEW AREA INLET MANHOLE
10S	1076792.546	752517.667	NEW MANHOLE
14S	1076762.890	752514.353	NEW AREA INLET
15S	1076928.159	752328.230	NEW CURB INLET

6S	6S	1076861.228	752319.032	NEW AREA INLET MANHOLE
----	----	-------------	------------	------------------------

NEW STRUCTURE TABLE				
PT. #	I.D.	NORTHING	EASTING	DESCRIPTION
4S	4S	1076927.536	752311.039	NEW AREA INLET MANHOLE
5S	5S	1076911.215	752318.792	NEW MANHOLE
6S	6S	1076862.209	752310.985	NEW AREA INLET MANHOLE
7S	7S	1076849.596	752414.865	NEW AREA INLET MANHOLE
8S	8S	1076826.569	752439.407	NEW CURB & AREA INLET
9S	9S	1076797.710	752468.073	NEW AREA INLET MANHOLE
10S	10S	1076790.706	752690.314	NEW MANHOLE
14S	14S	1076762.076	752513.841	NEW AREA INLET
15S	15S	1076927.536	75229.303	NEW CURB INLET

EXISTING STRUCTURE TABLE				
PT. #	I.D.	NORTHING	EASTING	DESCRIPTION
1744	1744	1076803.714	752681.294	EX DOUBLE CURB INLET
1867	1867	1076779.480	752707.970	EX CURB INLET
1979	1979	1076781.105	752690.314	EX AREA INLET
2095	2095	1076762.073	752513.827	EX CURB INLET
2808	2808	1076826.569	752439.407	EX CURB INLET
2930	2930	1076797.710	752468.073	EX AREA INLET
2945	2945	1076873.532	752527.150	EX MANHOLE
2946	2946	1076884.607	752546.471	EX MANHOLE
3728	3728	1076834.619	752287.734	EX MANHOLE
3925	3925	1076927.573	752329.282	EX CURB INLET
4288	4288	1076839.978	752104.922	EX CURB INLET
6490	6490	1076717.532	752421.560	EX MANHOLE

POINT TABLE			
CONTROL POINT #	NORTHING	EASTING	DESCRIPTION
102	1076786.987	752692.523	IRON ROD W/ CAP
110	1076798.400	752475.775	IRON ROD W/ CAP
115	1076630.901	752072.273	IRON PIPE
207	1076922.658	752483.235	CROSS
	1076922.673	752483.217	

**FISCHER GRADING
SUNSET ACRES CONDOS
STORM WATER IMPROVEMENTS
CITY OF FALLON, MISSOURI**

REVISIONS	
	App:
	App:
	App:
	App:

DRAWN G.W.C.
CHECKED J.B.S.
DATE 06/21/21
SCALE 1"=20'
JOB No. 6442
SHEET NAME AS-BUILT-3

AS-BUILT PLANS PREPARED BY:

JOHN B. SCHEBAUM
 PE 2020000083
 REGISTERED PROFESSIONAL ENGINEER

John B. Schebaum
 Date: 06/21/21

John B. Schebaum, P.E. #2020000083
 State of Missouri
 Registered Professional Engineer
 for BFA, Inc. Professional Engineer Corporation #000472

bfaeng.com TELEPHONE: (636) 239-4751

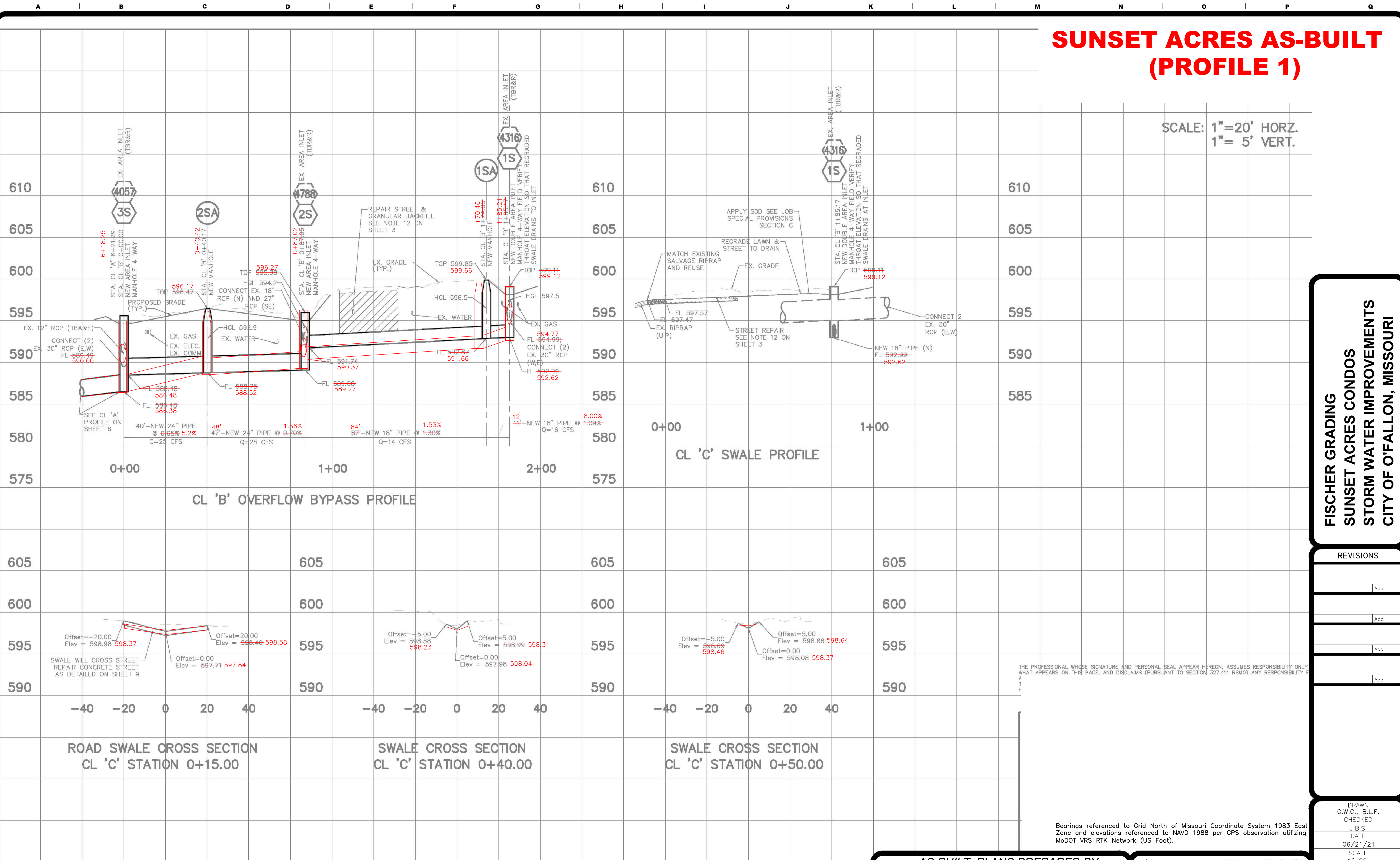
BFA
 Engineering-Surveying

103 ELM STREET WASHINGTON, MISSOURI 63090

F:\Vout\6442 Sunset Acres As Built Fischer Grading\6442 Base Plans\6442 Topobase.dwg 6/18/2021 11:30 AM

SUNSET ACRES AS-BUILT (PROFILE 1)

SCALE: 1"=20' HORZ.
1"= 5' VERT.



**FISCHER GRADING
SUNSET ACRES CONDOS
STORM WATER IMPROVEMENTS
CITY OF FALLON, MISSOURI**

REVISIONS	
	App:
	App:
	App:
	App:

THE PROFESSIONAL WHOSE SIGNATURE AND PERSONAL SEAL APPEAR HEREON, ASSUMES RESPONSIBILITY ONLY FOR WHAT APPEARS ON THIS PAGE, AND DISCLAIMS (PURSUANT TO SECTION 327.411 RSMO) ANY RESPONSIBILITY FOR THE ACCURACY OF THE INFORMATION PROVIDED TO HIM OR HER BY OTHERS.

Path: \\hrgwdfs004\data\75160011\CAD\Drawings\01-Sunset Acres Condos\
Plotted on: 6/08/20 @ 01:31:22PM by eclanta

AS-BUILT PLANS PREPARED BY:

JOHN B. SCHEBAUM

 Date: 06/21/21
 Registered Professional Engineer
 for BFA, Inc. Professional Engineer Corporation #000472

bfaeng.com TELEPHONE: (636) 239-4751

BFA
Engineering-Surveying

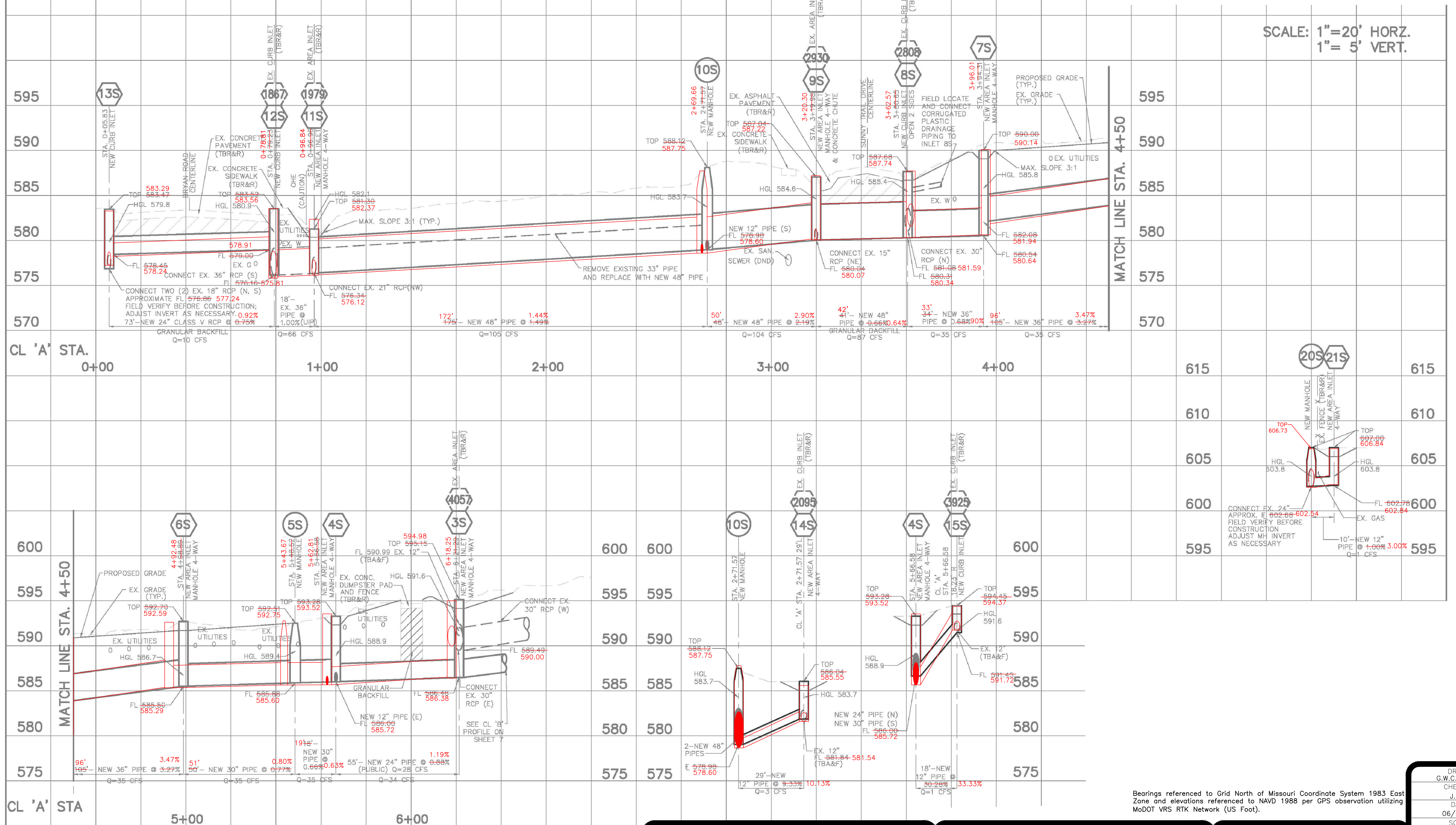
103 ELM STREET WASHINGTON, MISSOURI 63090

DRAWN: G.W.C., B.L.F.
 CHECKED: J.B.S.
 DATE: 06/21/21
 SCALE: 1"=20'
 JOB No.: 6442
 SHEET NAME: AS-BUILT-5
AB-5

F:\Vault\6442_Sunset Acres As Built_Fischer Grading\6442_Base Plans\6442_Topobase.dwg
 6/18/2021 11:30 AM

SUNSET ACRES AS-BUILT (PROFILE 2)

SCALE: 1"=20' HORZ.
1"= 5' VERT.



Bearings referenced to Grid North of Missouri Coordinate System 1983 East Zone and elevations referenced to NAVD 1988 per GPS observation utilizing MoDOT VRS RTK Network (US Foot).

FISCHER GRADING
SUNSET ACRES CONDOS
STORM WATER IMPROVEMENTS
CITY OF O'FALLON, MISSOURI

AS-BUILT PLANS PREPARED BY:

John B. Schebaum
 Date: 06/21/21
 State of Missouri
 Registered Professional Engineer
 for BFA, Inc. Professional Engineer Corporation #000472

bfaeng.com TELEPHONE: (636) 239-4751

 103 ELM STREET WASHINGTON, MISSOURI 63090

DRAWN: G.W.C., B.L.F.
 CHECKED: J.B.S.
 DATE: 06/21/21
 SCALE: 1"=20'
 JOB No.: 6442
 SHEET NAME: AS-BUILT-6
AB-6

F:\Vault\6442 Sunset Acres As Built Fischer Grading\6442 Base Plans\6442 Topobase.dwg 6/18/2021 11:31 AM