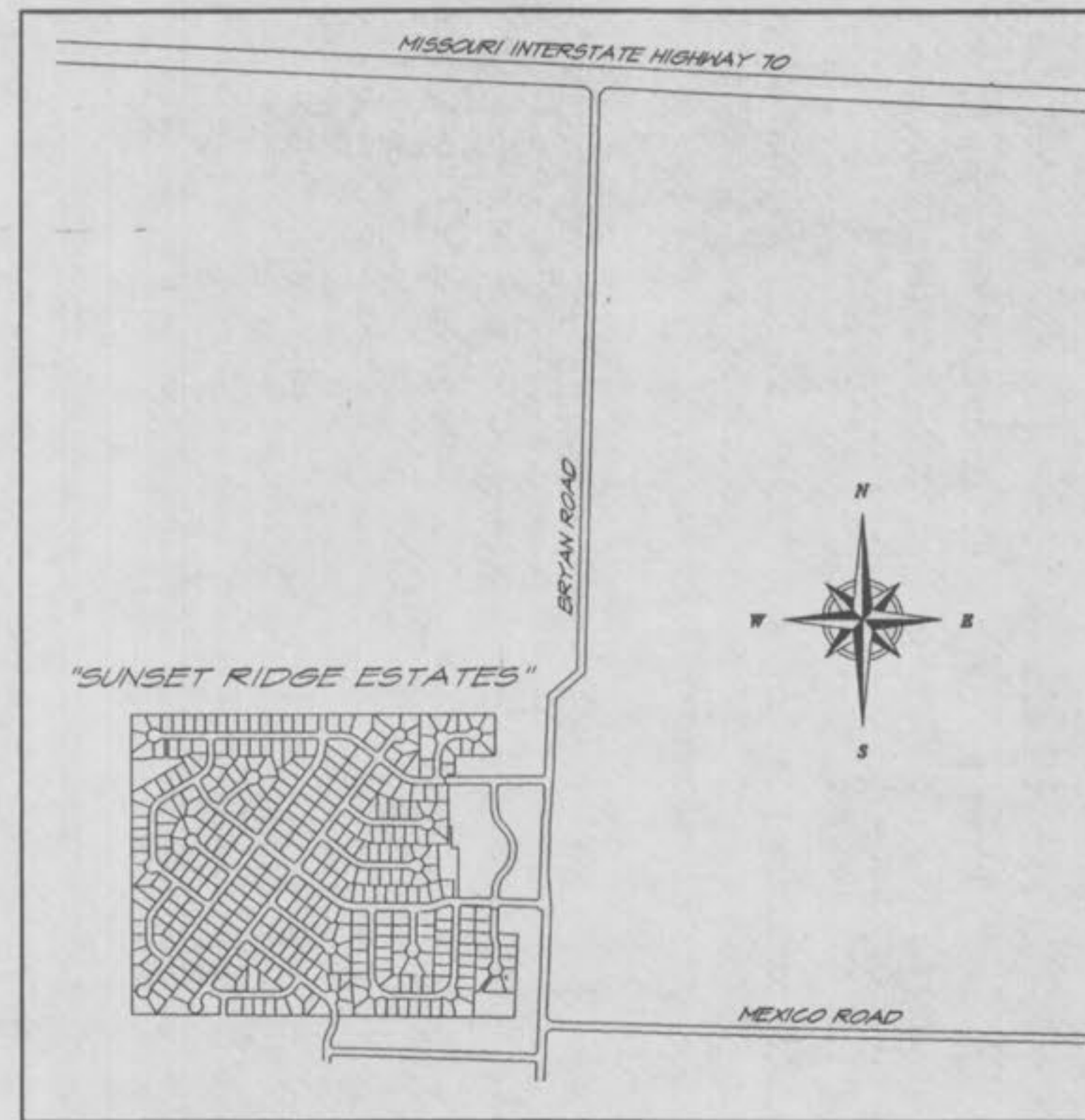


SUNSET RIDGE ESTATES

A TRACT OF LAND BEING PART OF
SECTION 36, TOWNSHIP 47 NORTH, RANGE 2 EAST,
CITY OF O'FALLON, ST. CHARLES COUNTY, MISSOURI

IMPROVEMENT PLANS



LOCATION MAP
(N.T.S.)


PREPARED FOR:
NOTHUM HOMES, INC.

GLENN NOTHUM
7321 S. LINDBERGH
SUITE 310
ST. LOUIS, MISSOURI 63125
(314) 894-7768

CIVIL ENGINEER:

SITE DEVELOPMENT ENGINEERING, INC.

12221 BIG BEND ROAD
ST. LOUIS, MISSOURI 63122
PHONE (314) 822-4800
FAX (314) 822-9600

PH.  AS-BUILTS

The existing sewer lengths, sizes, flowlines, depths of structures and sewers, and locations with respect to existing or proposed easements have been measured. The results of those measurements are shown on this set of "Final Measurement Plats". Since the wye locations have been plotted from information provided by the sewer contractor or other sources, I disclaim any responsibility for that specific information.

All public sewers are located within designated existing or proposed easements unless noted otherwise.

Site Development Engineering, Inc.
Corporate, L.S. 320B

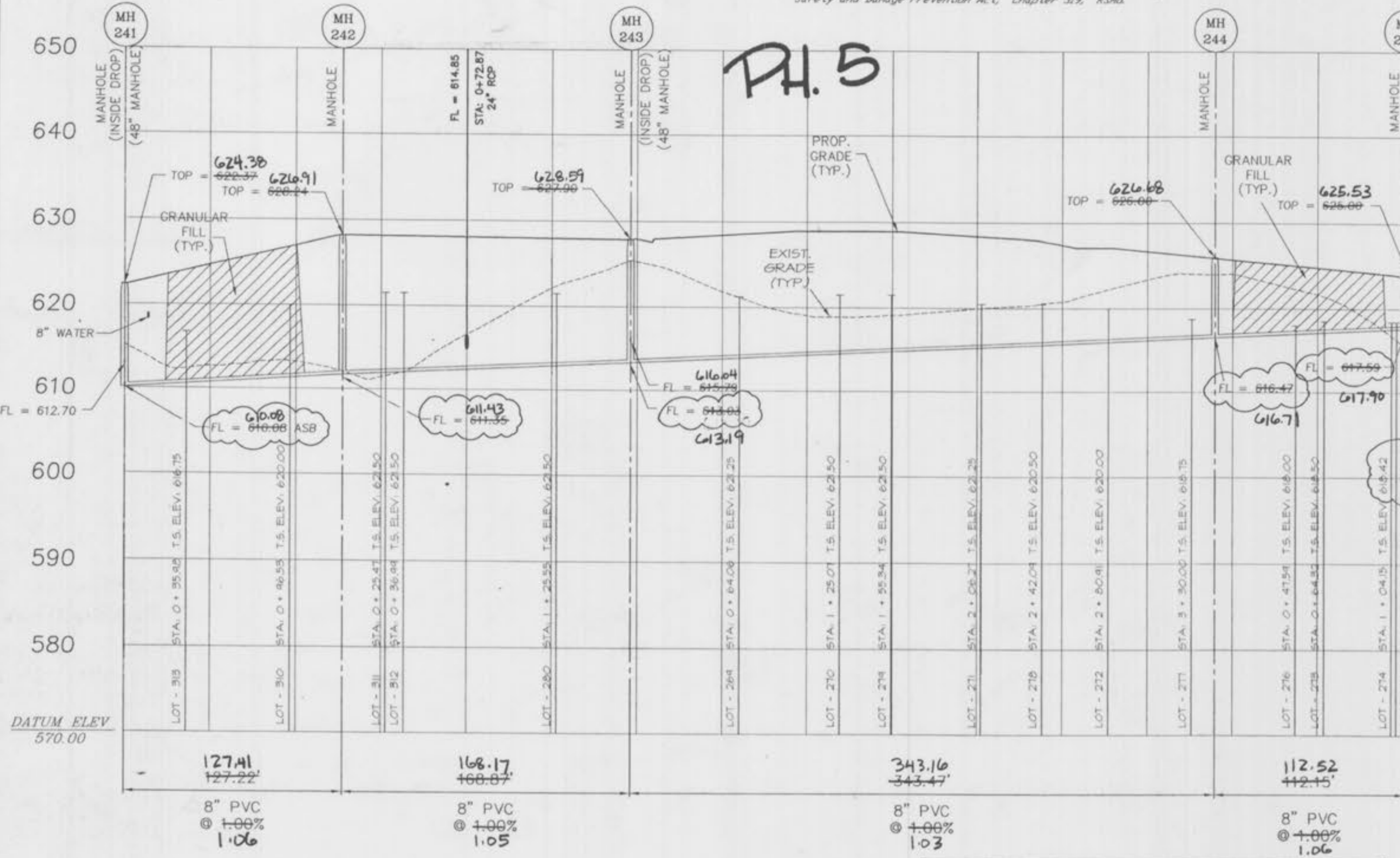

Michael A. Schuknecht, P.L.S.
Missouri Cert. No. L.S. 2303

8/8/02
Date

ZIP CODE : 63306

SITE DEVELOPMENT ENGINEERING, INC.		PLANNING SURVEYING CIVIL ENGINEERING
12221 BIG BEND ROAD, ST. LOUIS, MISSOURI 63122 (314) 822-4800 FAX (314) 822-9600		
SUNSET RIDGE ESTATES		
DATE : 4-17-98	JOB NO. : 95-541	DRAWN BY : JJA
DESIGN : JOY		SCALE : NONE
TITLE SHEET		
REV. : 4-24-98 per CITY OF O'FALLON 6-30-98 per CITY OF O'FALLON 10-23-98 per CITY OF O'FALLON		SHEET : Sunset Ridge Estates As-Built's of 58

241-245

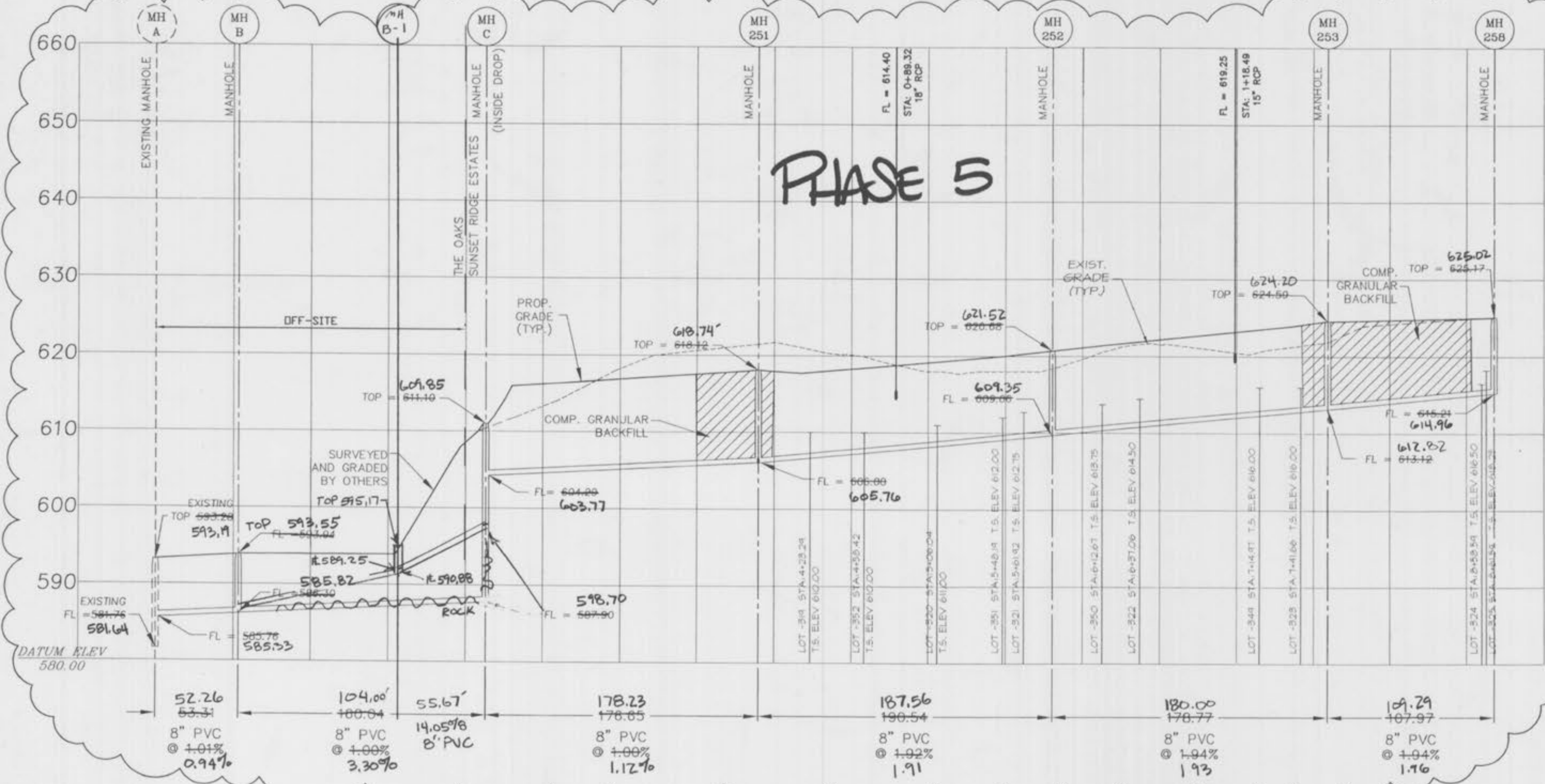


215-255



REVISIONS
 REV- 8/30/96 95-541
 REV- 10/15/96 REV- 05/06/97
 REV- 09/10/98 REV- 10/16/98
 REV- 11/30/00 REV- 12/04/00
 AFB'S 515101
 AFB'S 515101

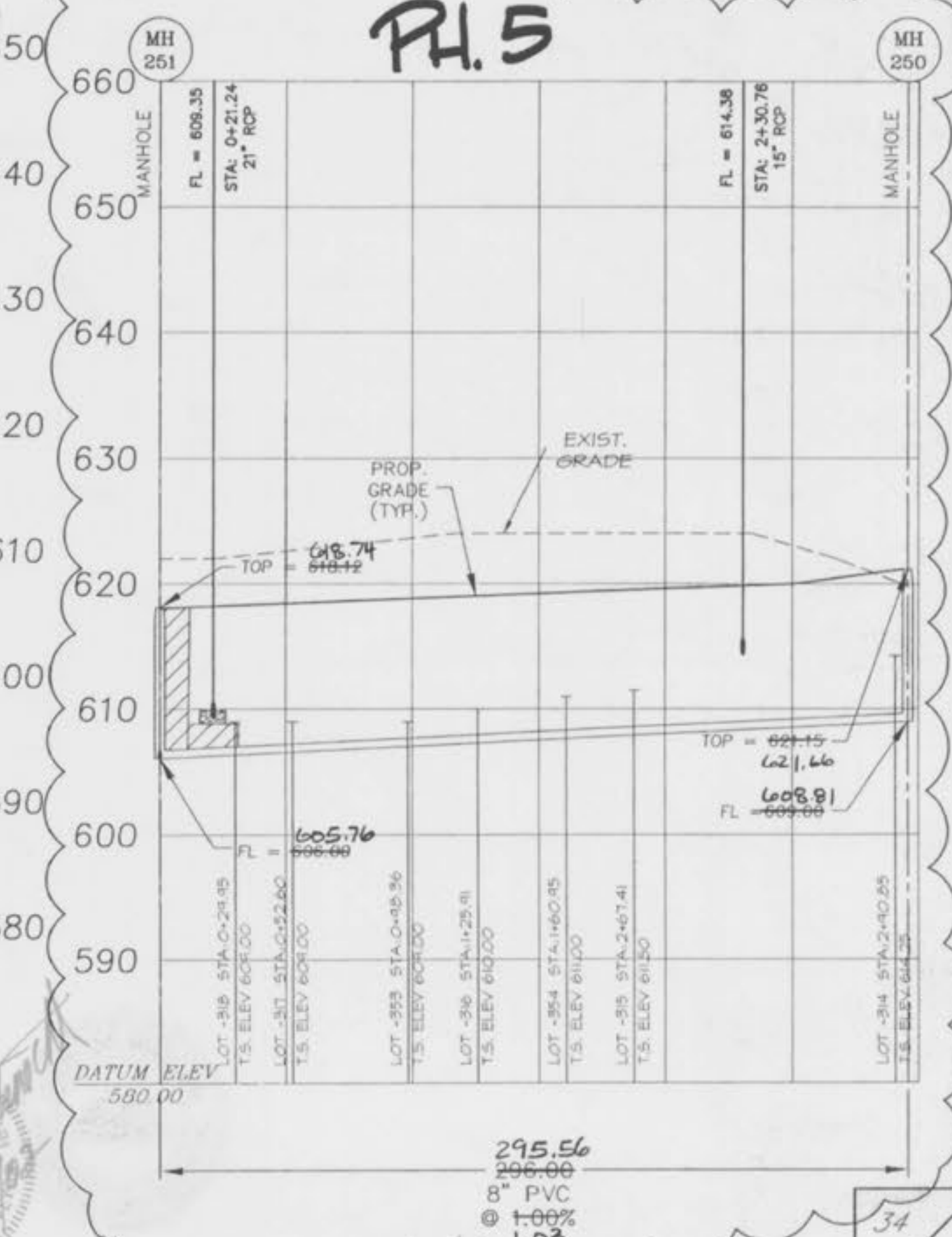
114-258



243-246



251-250



The underground utilities shown herein were plotted from available information and do not necessarily reflect the actual existence, nonexistence, size, type, number, or location of these or other utilities. The general contractor shall be responsible for verifying the actual location of all underground utilities, shown or not shown, and said utilities shall be located in the field prior to any grading, excavation or construction of improvements. These provisions shall in no way absolve any party from complying with the Underground Facility Safety and Damage Prevention Act, Chapter 315, RSM.

* SEE NOTE 13 OF SANITARY SEWER CONSTRUCTION NOTES, SHEET 2 OF 56.

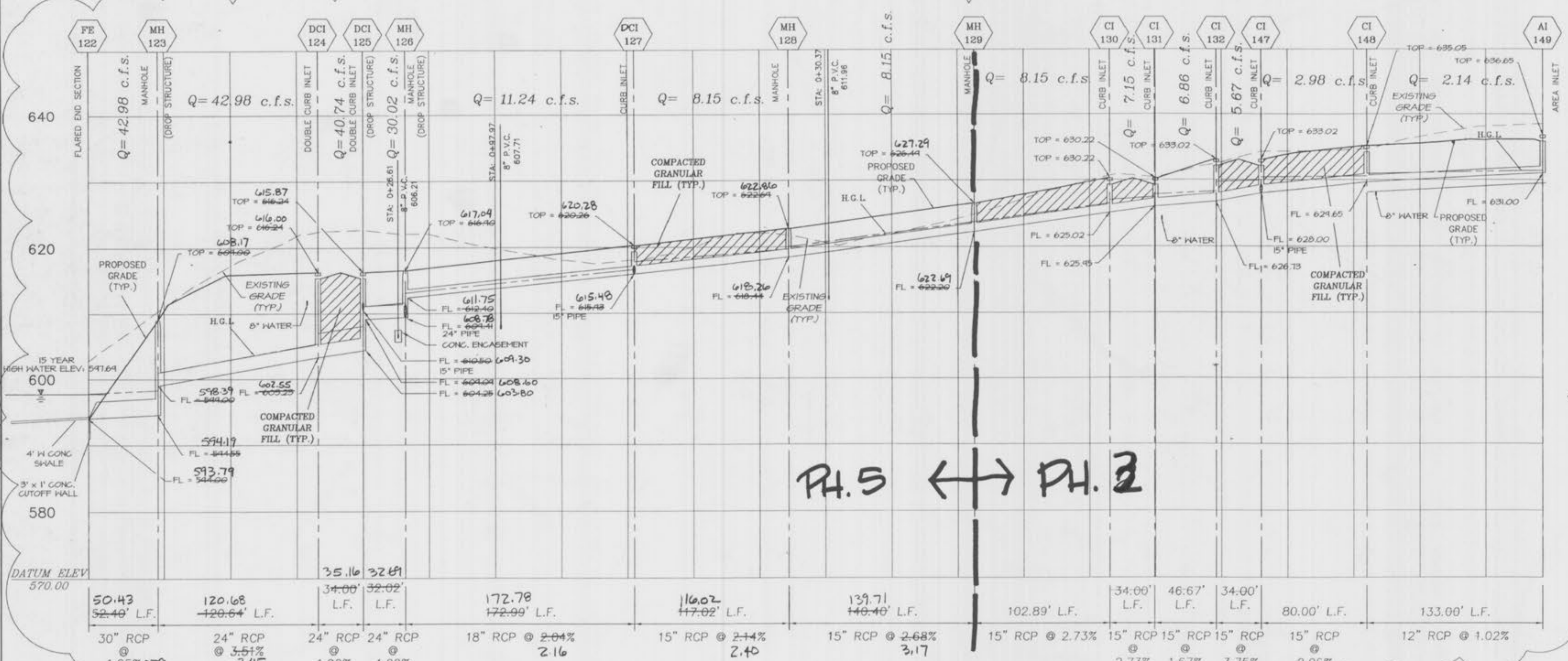
T.S. = TAILSTAKE ELEVATION OF A 6" SANITARY SEWER LATERAL @ BUILDING LINE.



The underground utilities shown herein were plotted from available information and do not necessarily reflect the actual existence, presence, size, type, number, or location of these or other utilities. The general contractor shall be responsible for verifying the actual location of all underground utilities, shown or not shown, and shall utilities shall be located in the field prior to any grading, excavation, or construction of improvements. These provisions shall in no way absolve any party from complying with the Underground Facility Safety and Damage Prevention Act, Chapter 326, 326A.

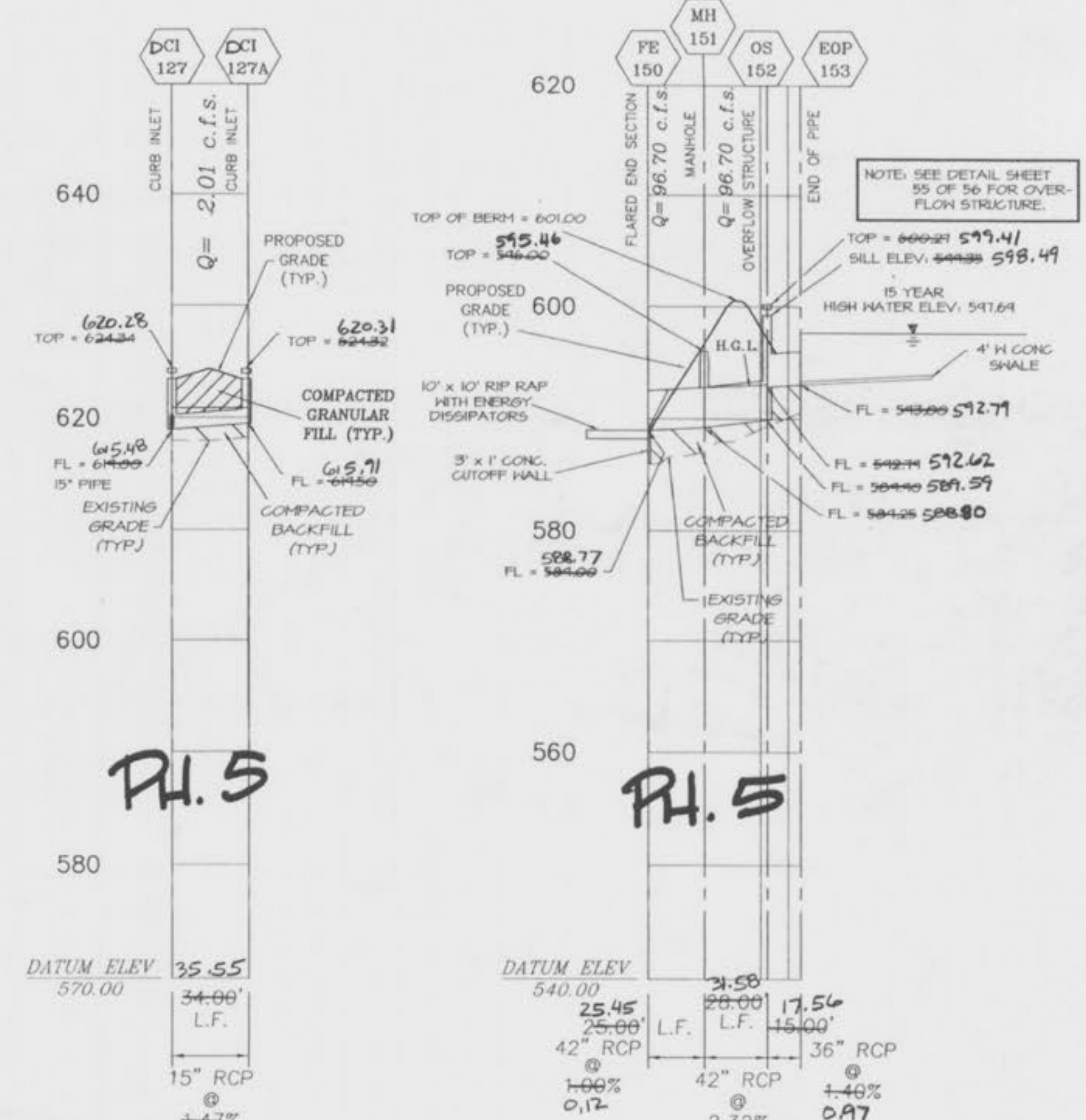
H.G.L. = HYDRAULIC GRADE LINE
NOTE: ALL SEWER PIPE TO BE CLASS III REINFORCED CONCRETE PIPE, UNLESS OTHERWISE SPECIFIED ON PLANS.

FE 122-AI 149

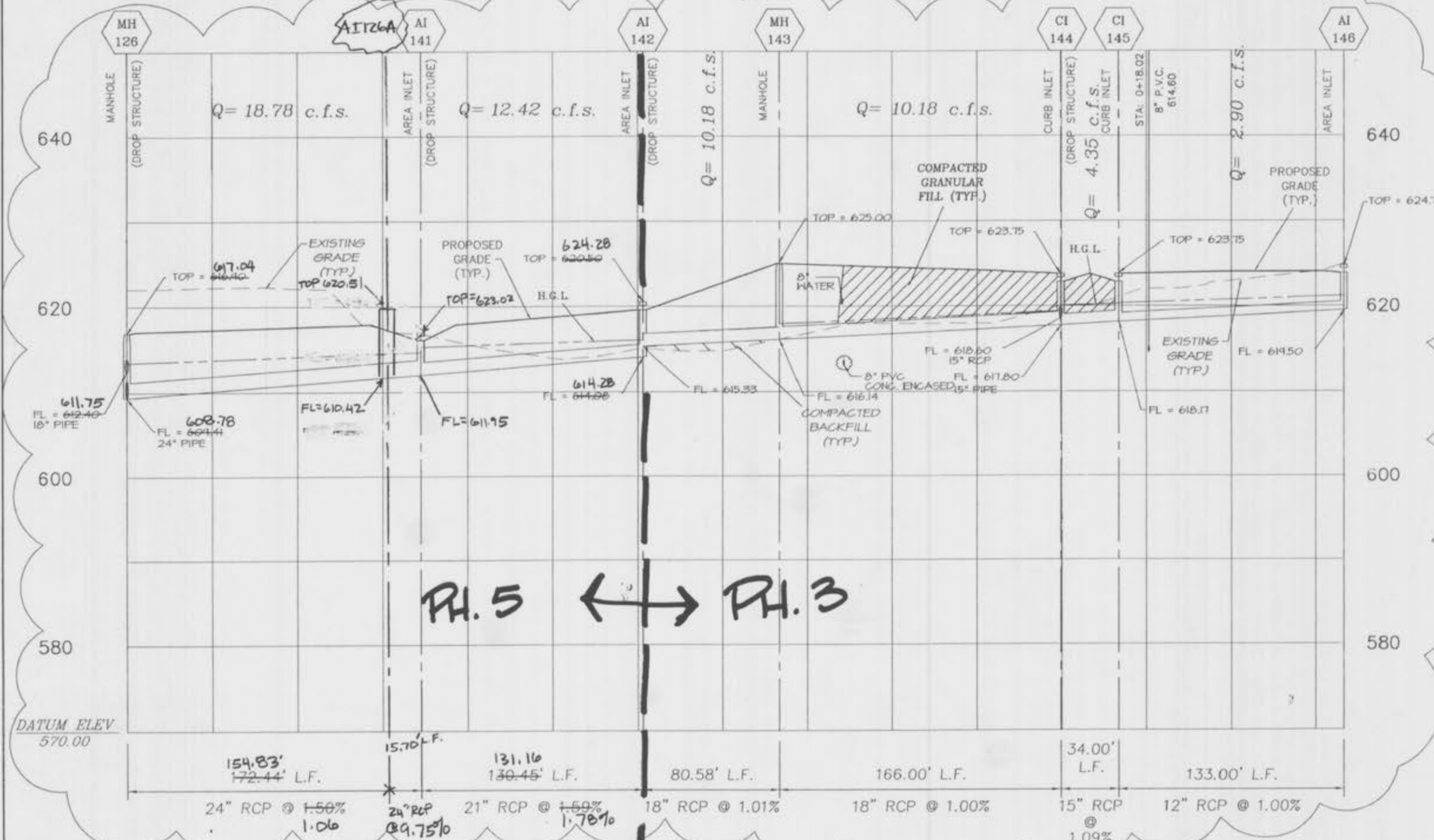


CI 127-CI 127A

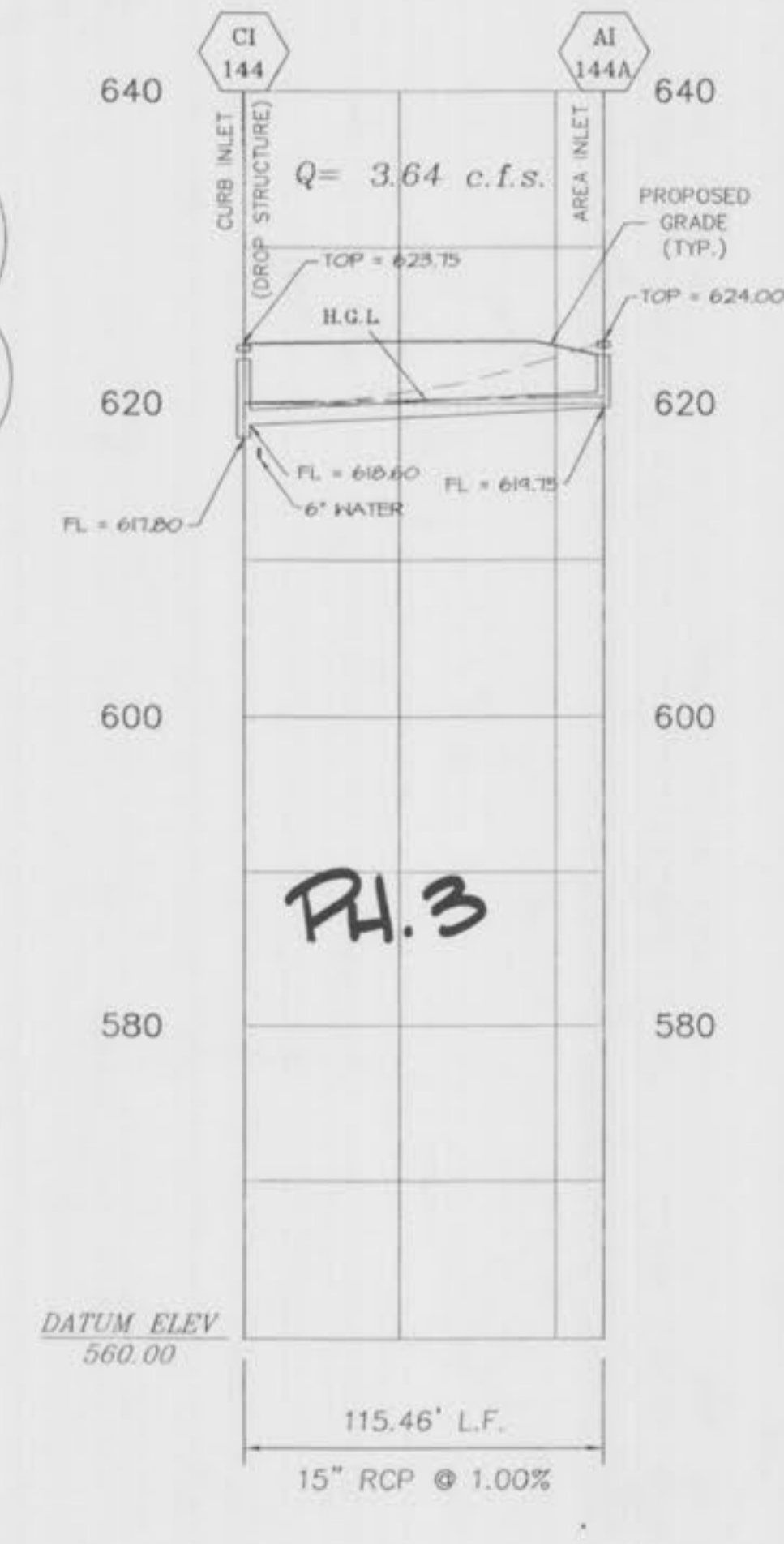
FE 150-EOP 153



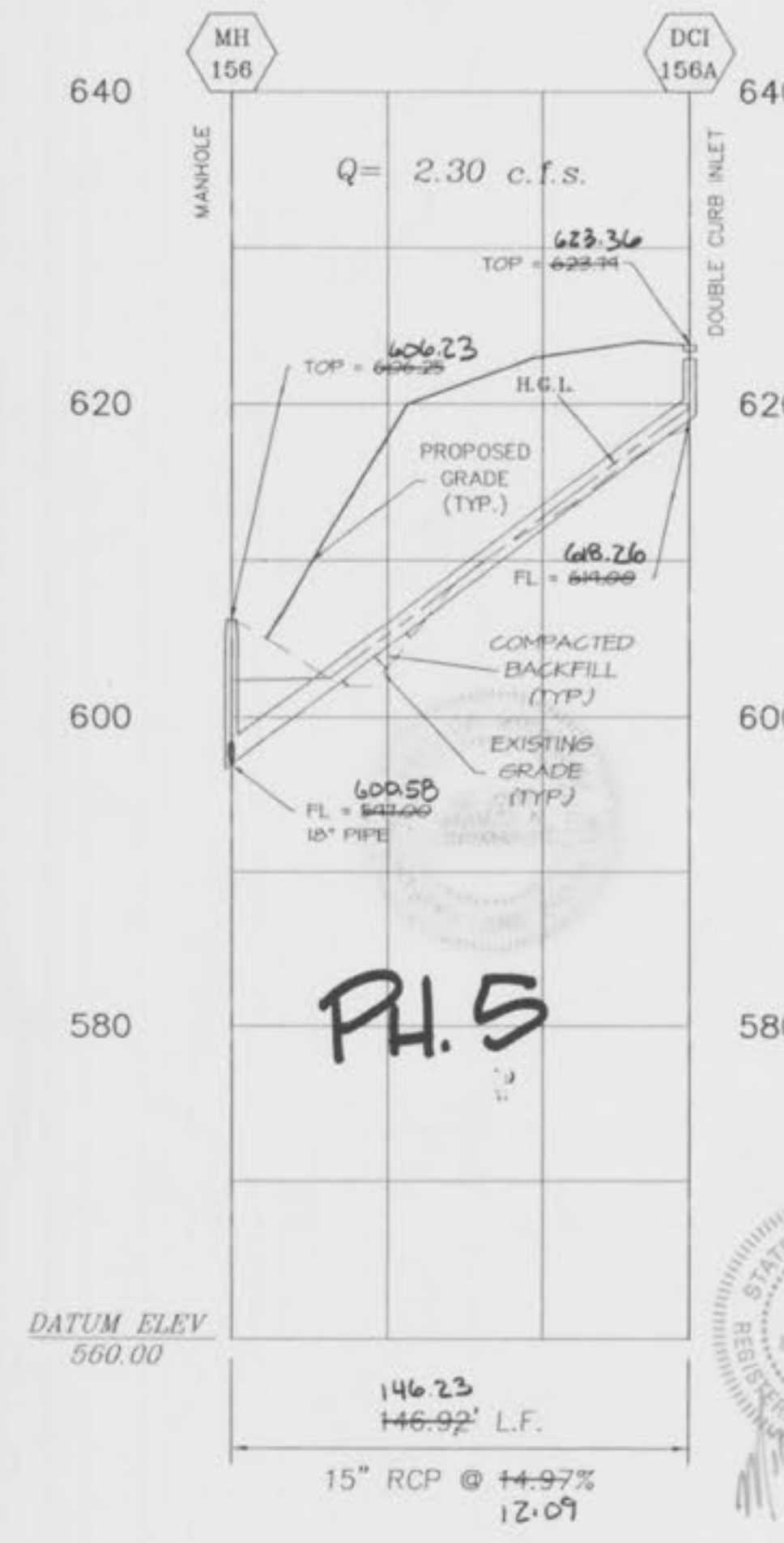
MH 126-AI 146



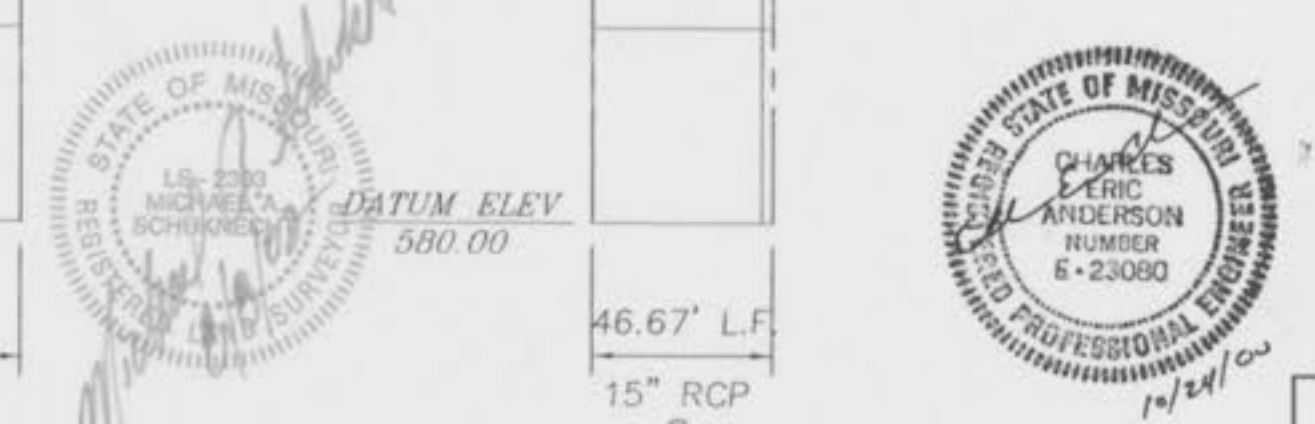
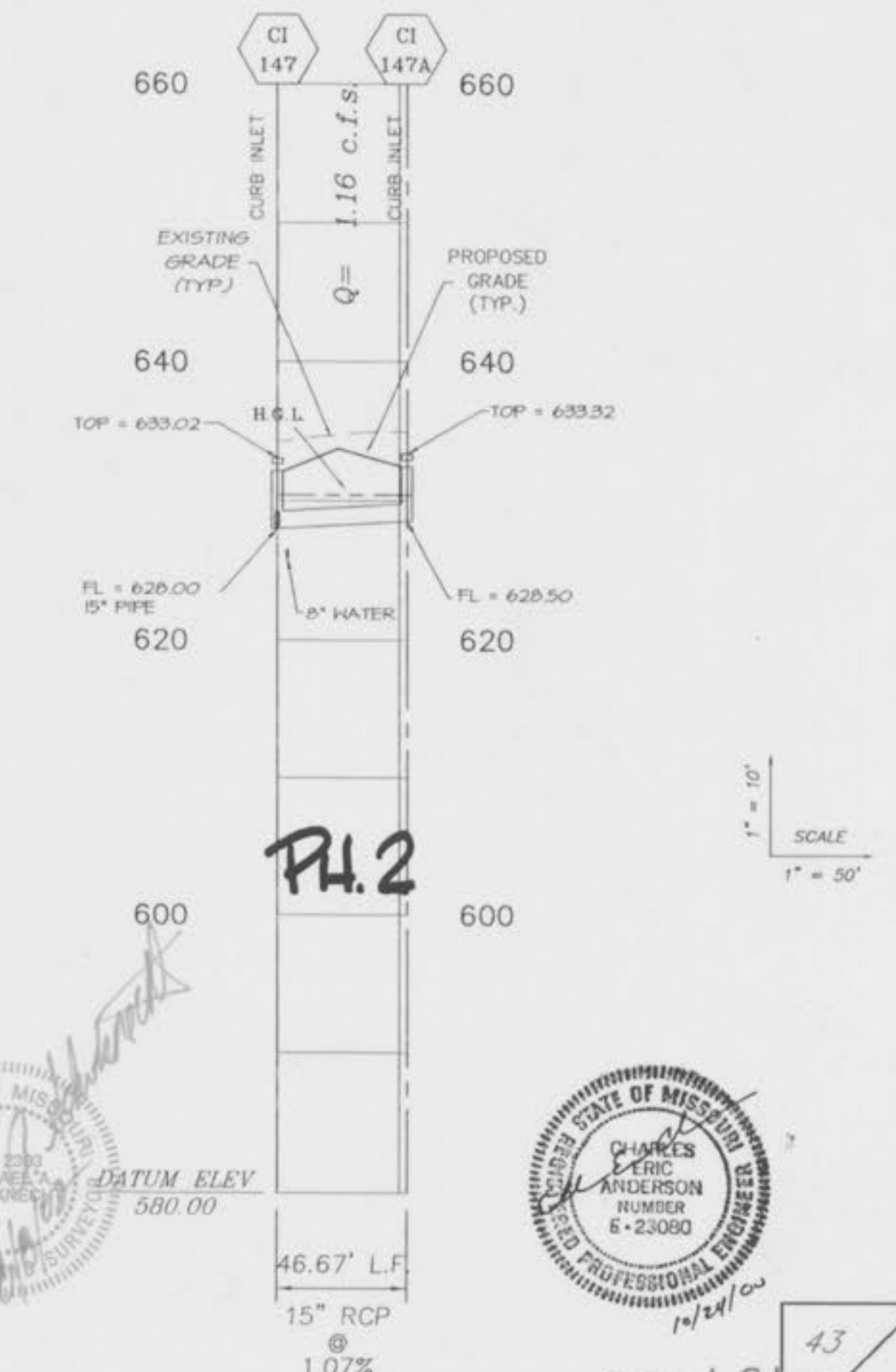
CI 144-AI 144A



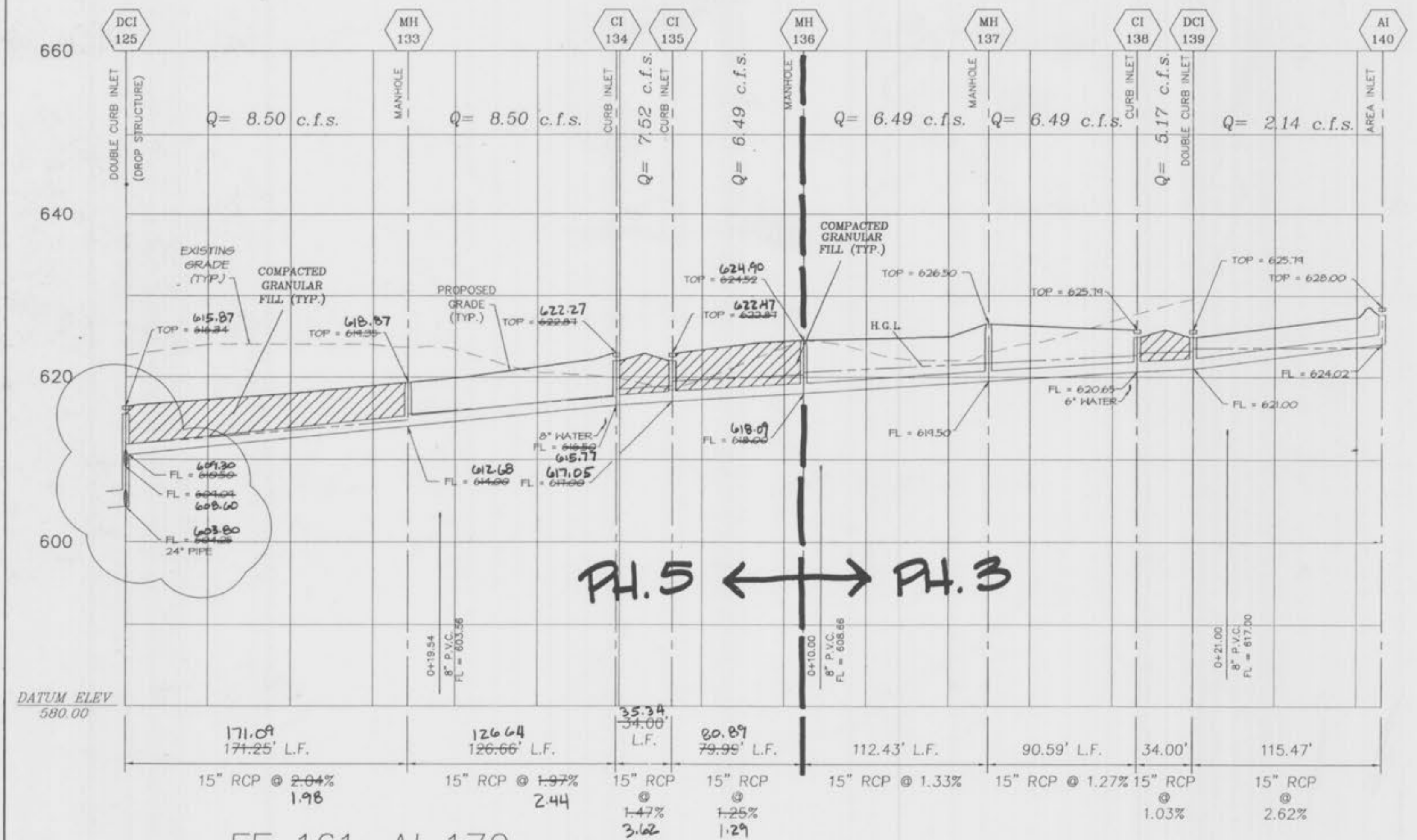
MH 156-DCI 156A



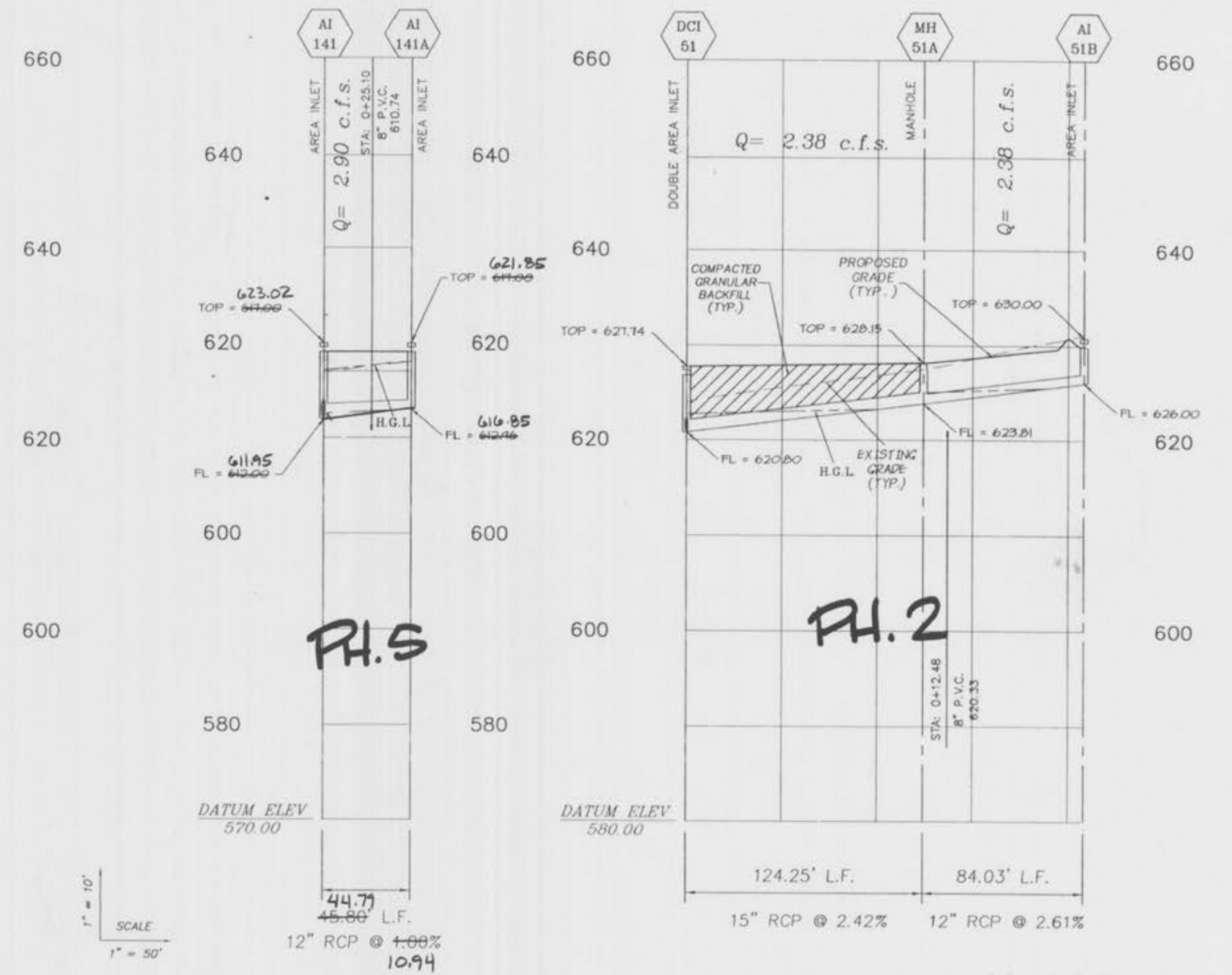
CI 147-CI 147A



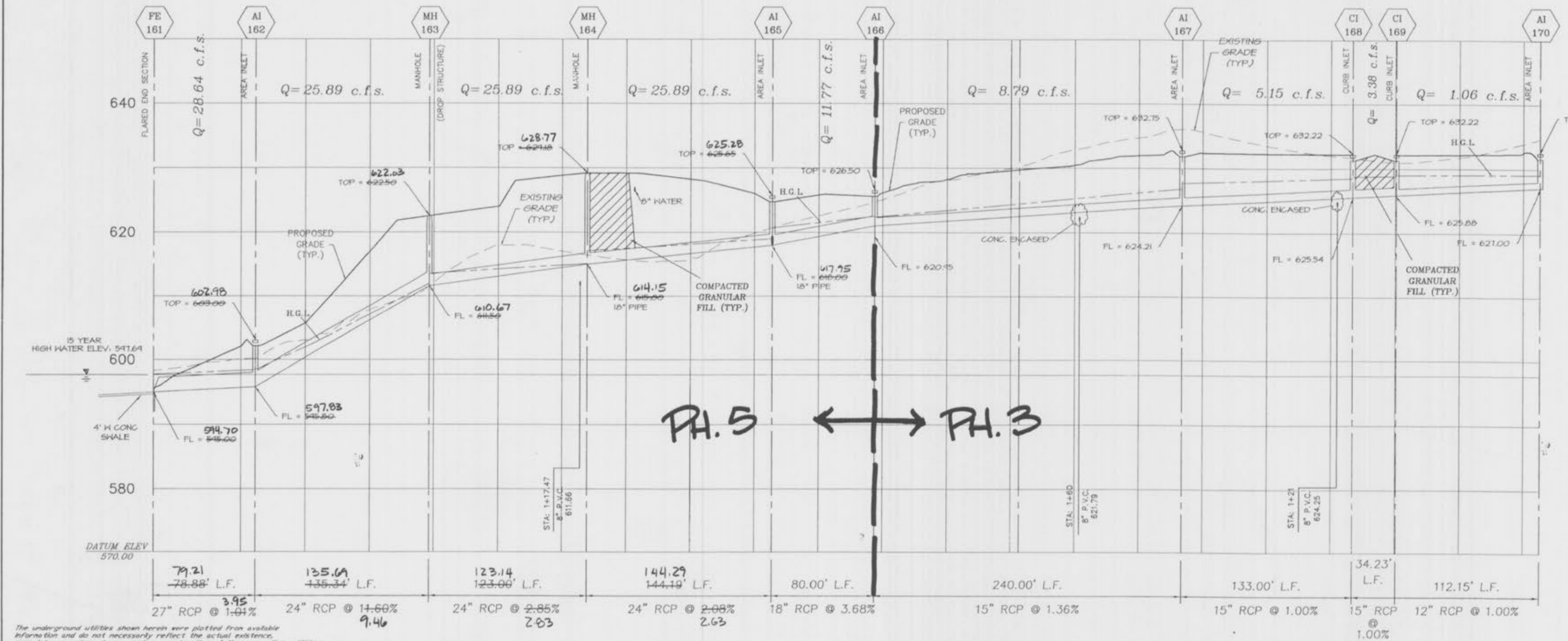
DCI 125-DCI 140



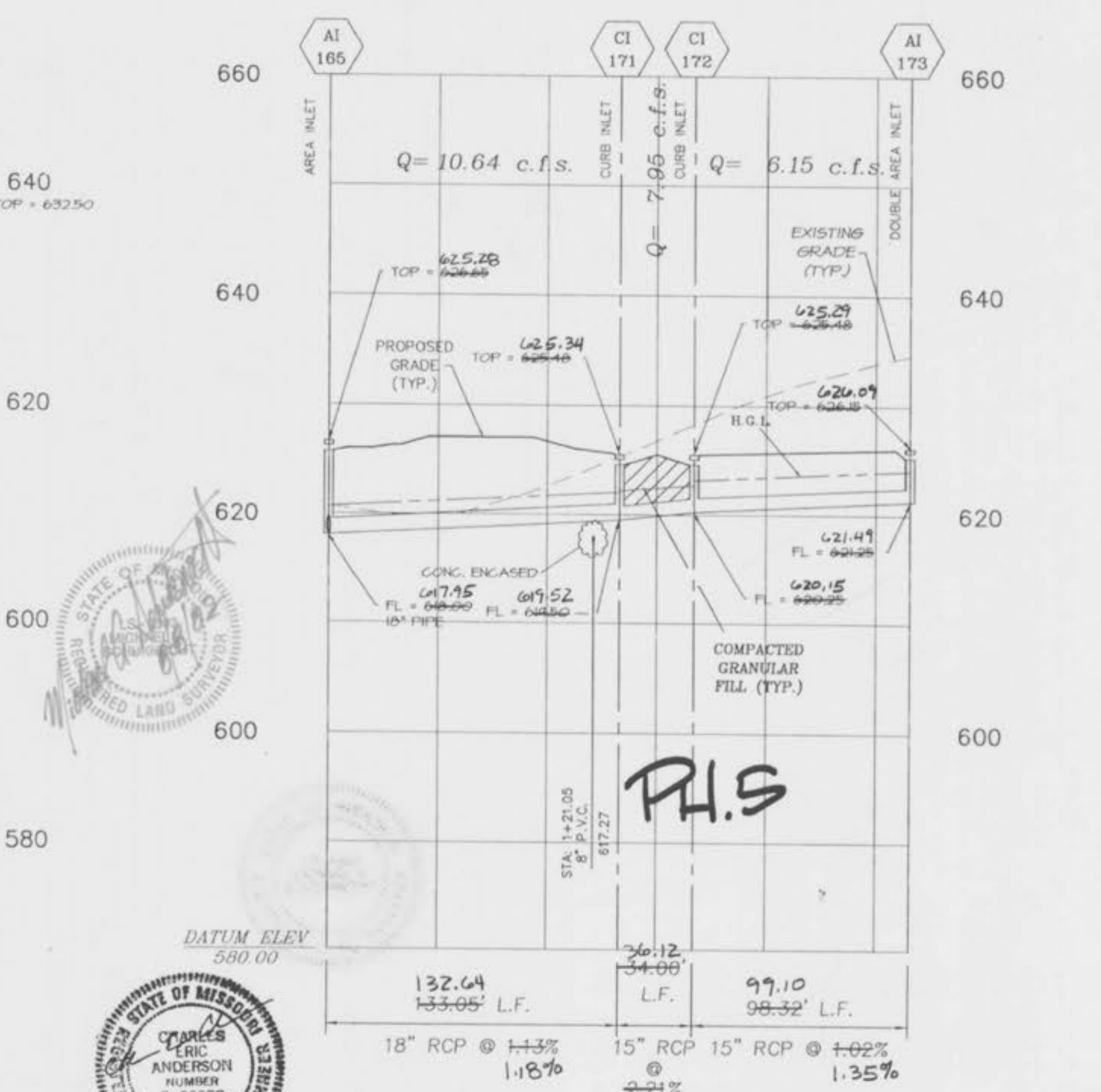
AI 141-AI 141A DCI 51-AI 51B



FE 161-AI 170



AI 165-AI 173

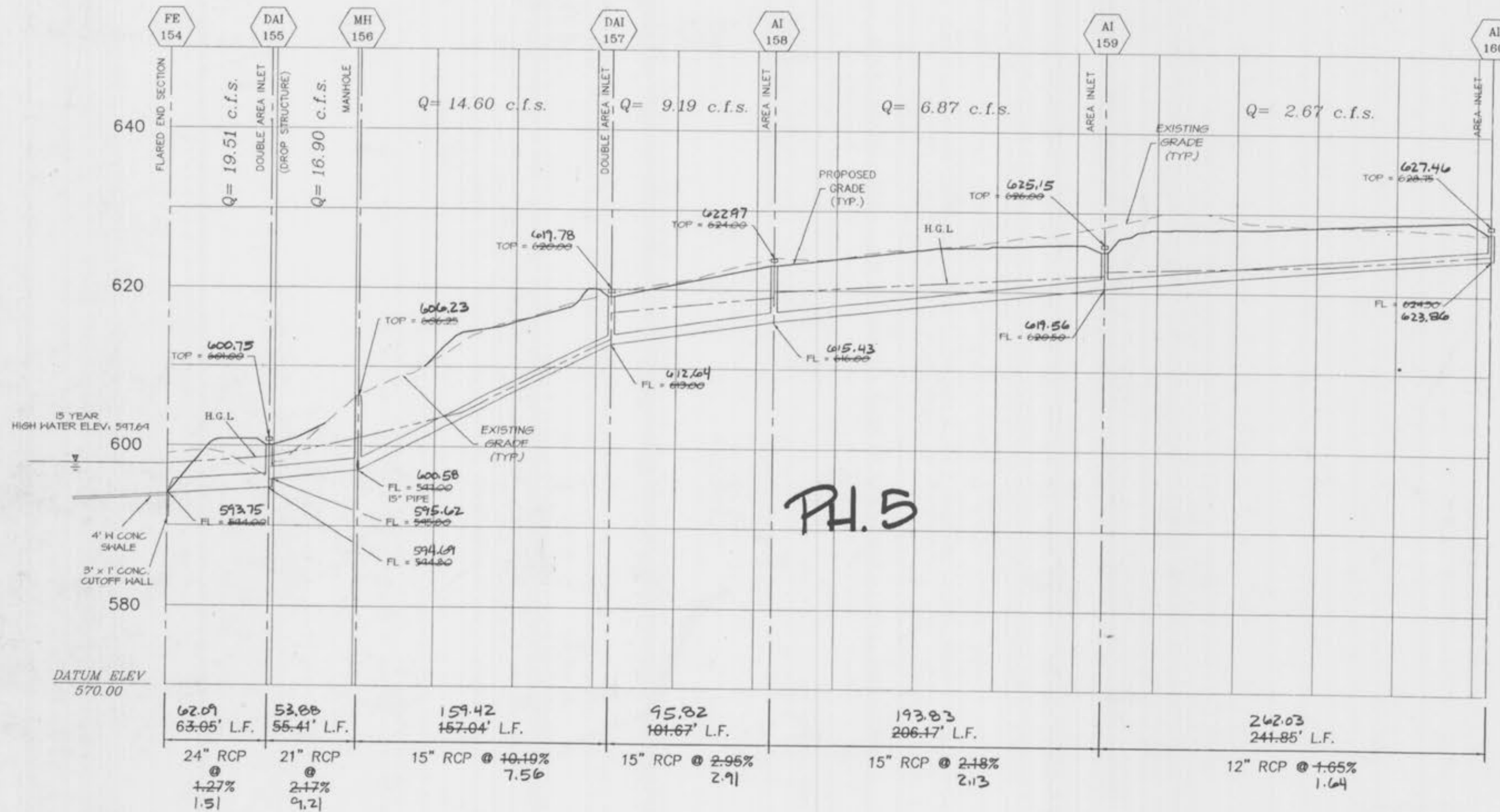


The underground utilities shown herein were plotted from available information and do not necessarily reflect the actual existence, name, size, type, number, or location of those or other utilities. The general contractor shall be responsible for verifying the actual location of all underground utilities, shown or not shown, and only utilities shall be located in the field prior to any grading, excavation, or construction of improvements. These provisions shall in no way absolve any party from complying with the Underground Facility Safety and Damage Prevention Act, Chapter 315, RSM.

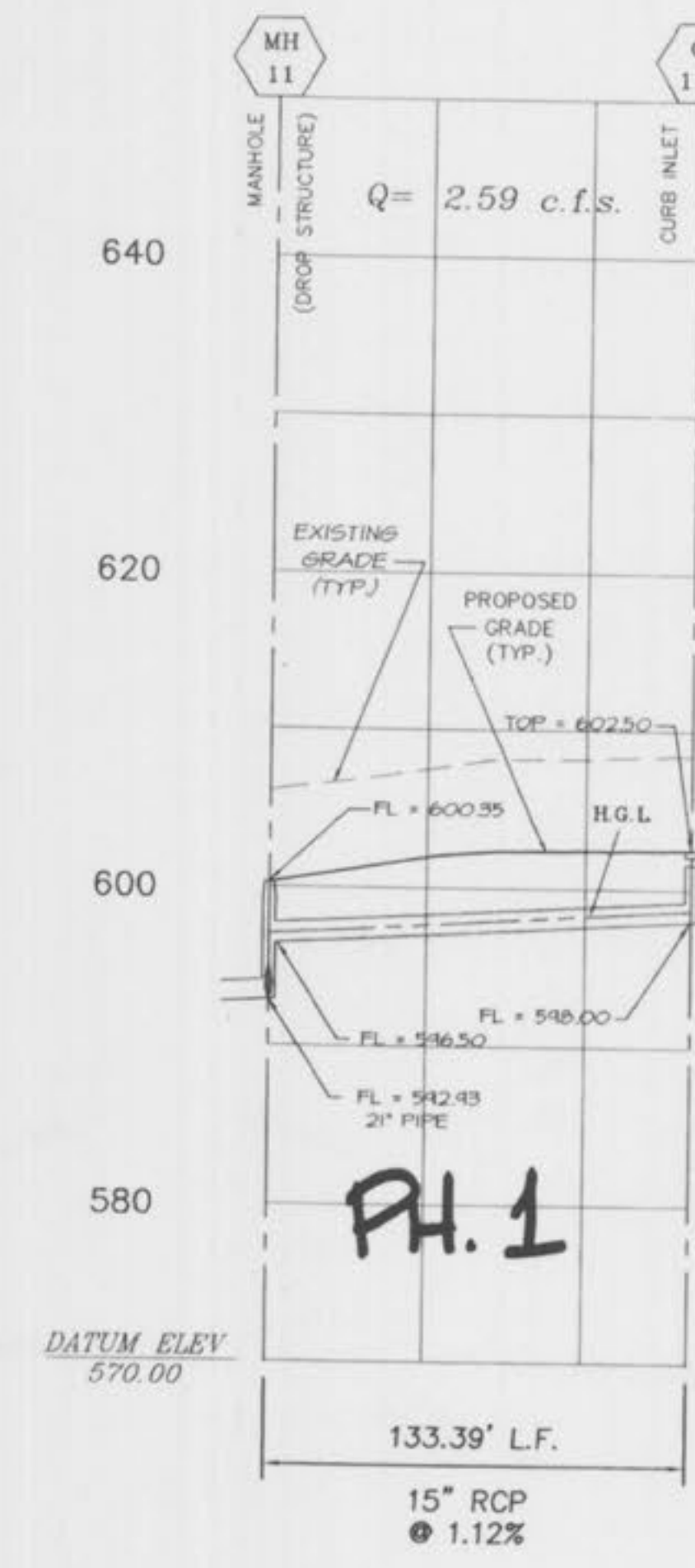
H.G.L. = HYDRAULIC GRADE LINE
NOTE: ALL SEWER PIPE TO BE CLASS III REINFORCED CONCRETE PIPE, UNLESS OTHERWISE SPECIFIED ON PLANS.



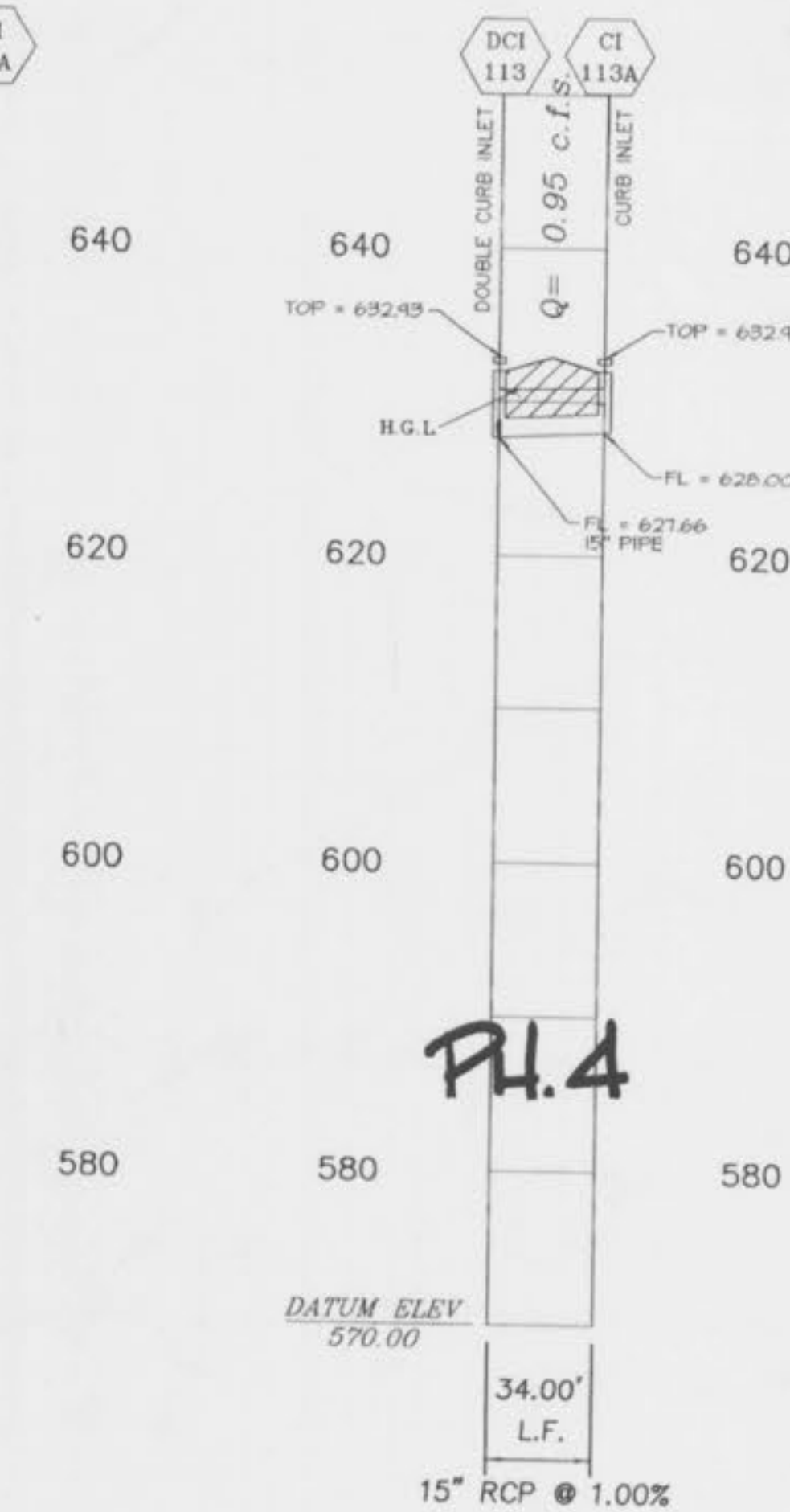
FE 154-AI 160



MH 11-CI 11A



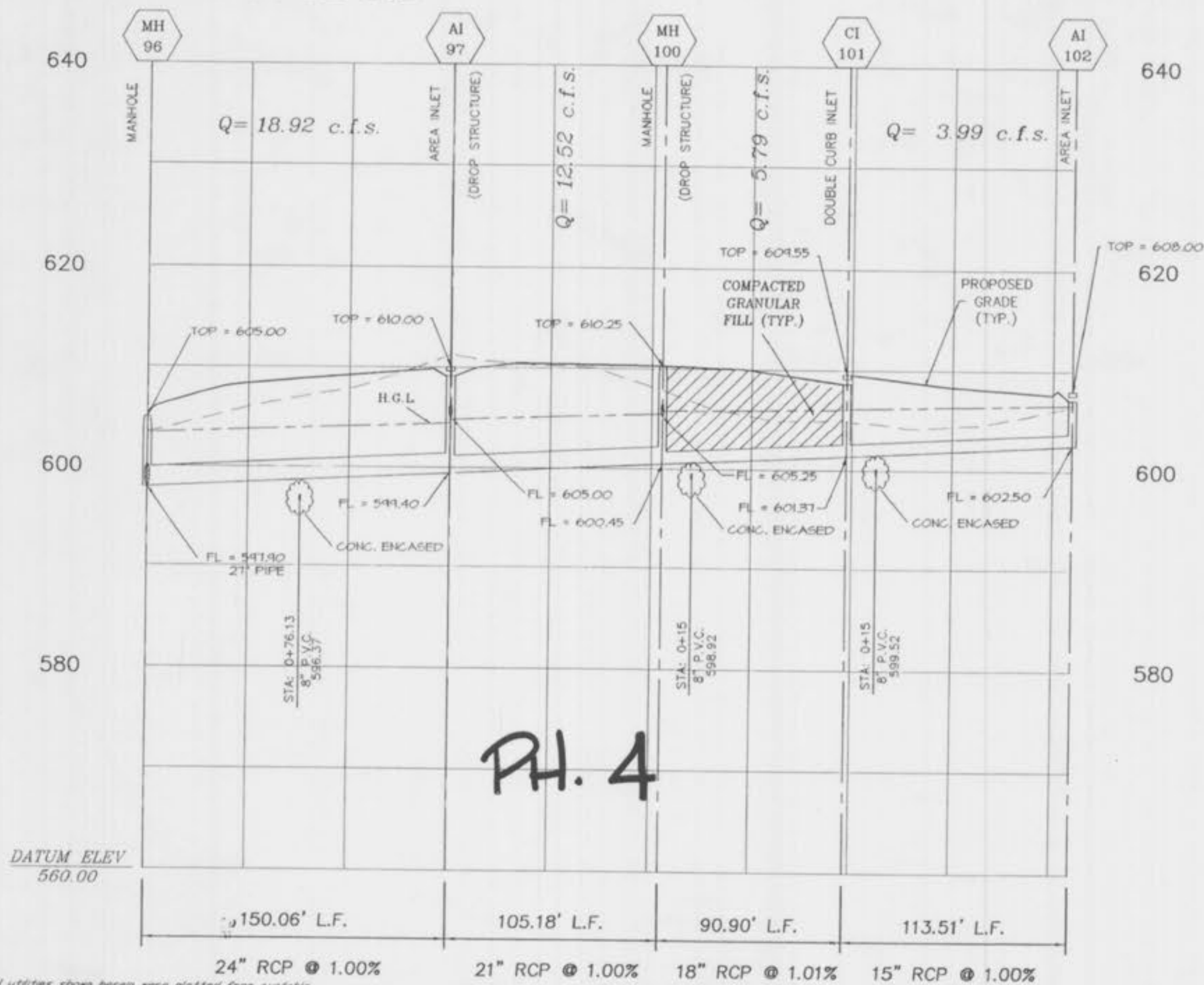
DCI 113-CI 113A



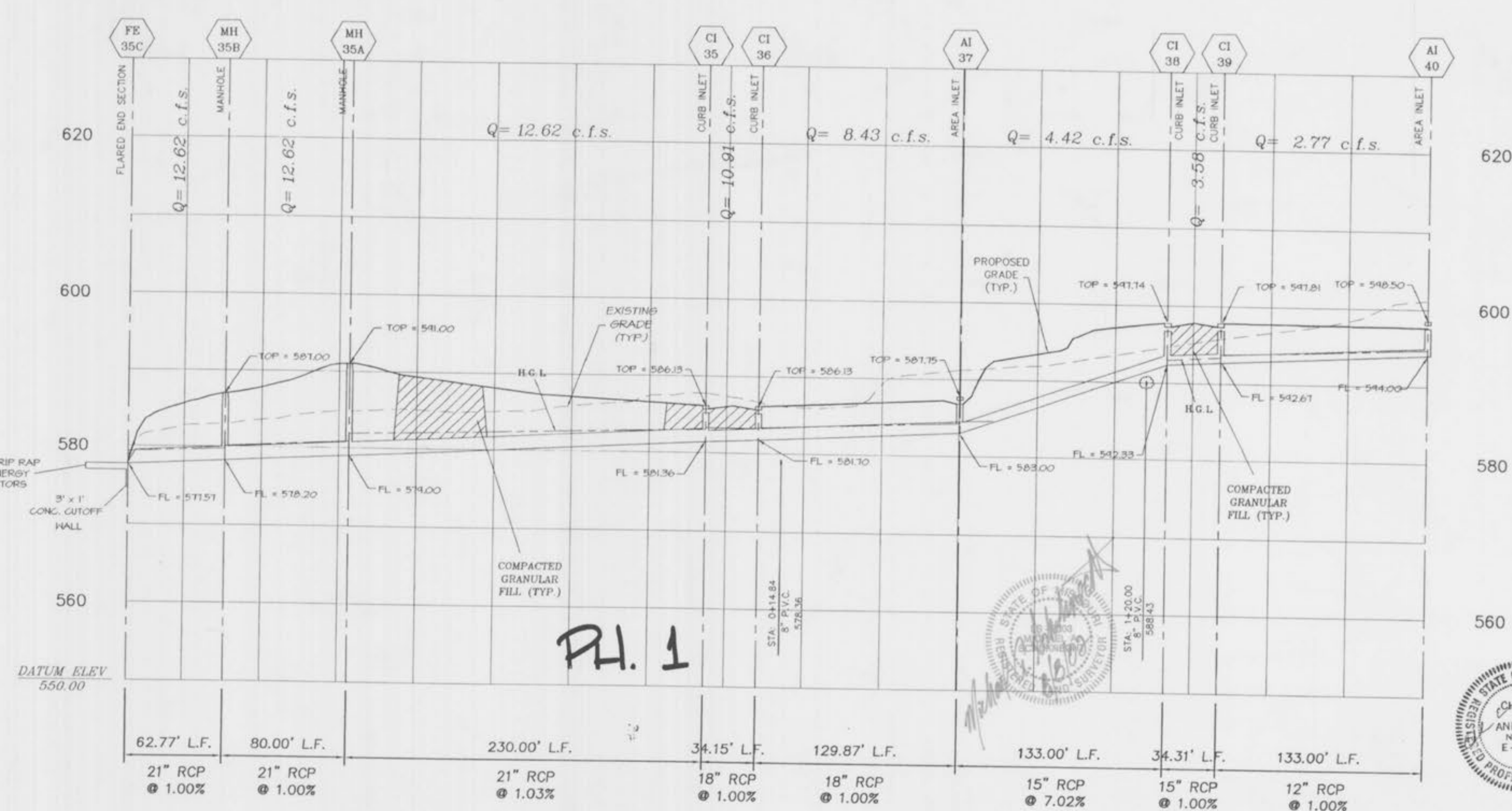
SUNSET RIDGE ESTATES
STORM PROFILES
REV- 8/30/96
REV- 10/23/96
REV- 11/21/96
REV- 05/06/97
REV- 09/10/98
A-65-510101 95-541

1" = 10'
SCALE
1" = 50'

MH 96-AI 102



FE 35C-AI 40



The underground utilities shown herein were plotted from available information and do not necessarily reflect the actual existence, size, type, number, or location of these or other utilities. The general contractor shall be responsible for verifying the actual location of all underground utilities, pipes or structures, and shall be liable for any damage to or destruction of any utility or structure during the construction of improvements. These provisions shall in no way absolve any party from complying with the Underground Facility Safety and Damage Prevention Act, Chapter 319, RSM.

H.G.L. = HYDRAULIC GRADE LINE

NOTE: ALL SEWER PIPE TO BE CLASS III REINFORCED CONCRETE PIPE, UNLESS OTHERWISE SPECIFIED ON PLANS.

PH 5 AS-BUILTS

Sunset Ridge Estates

