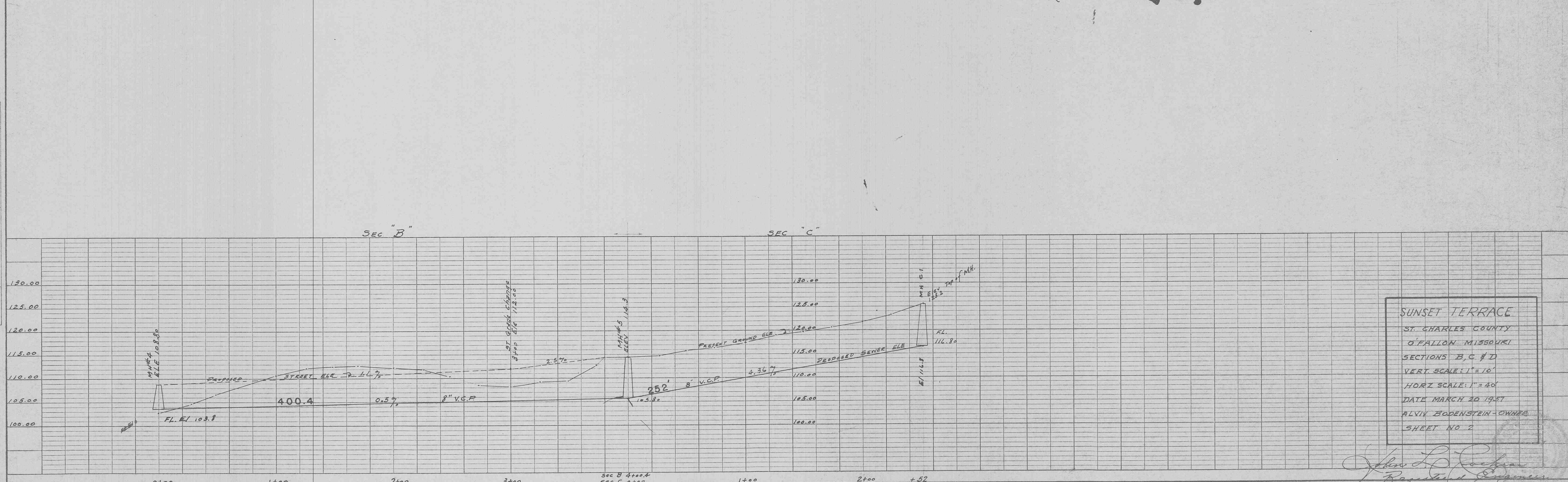
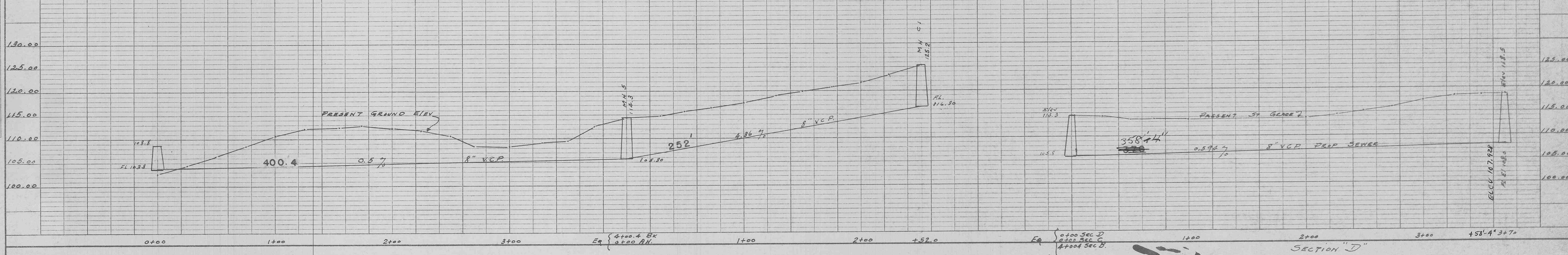
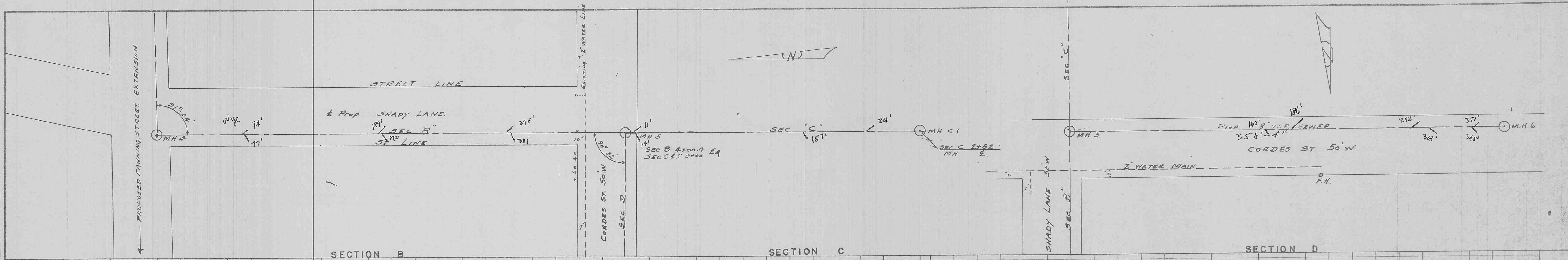


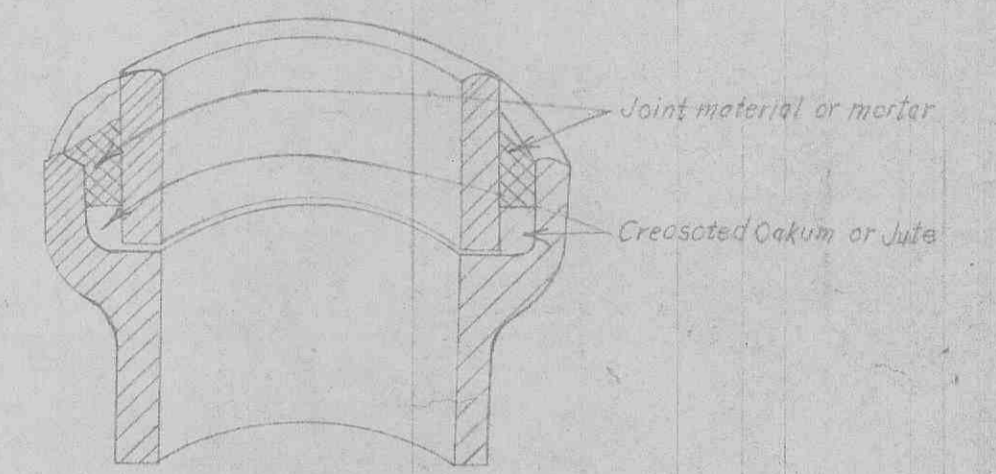
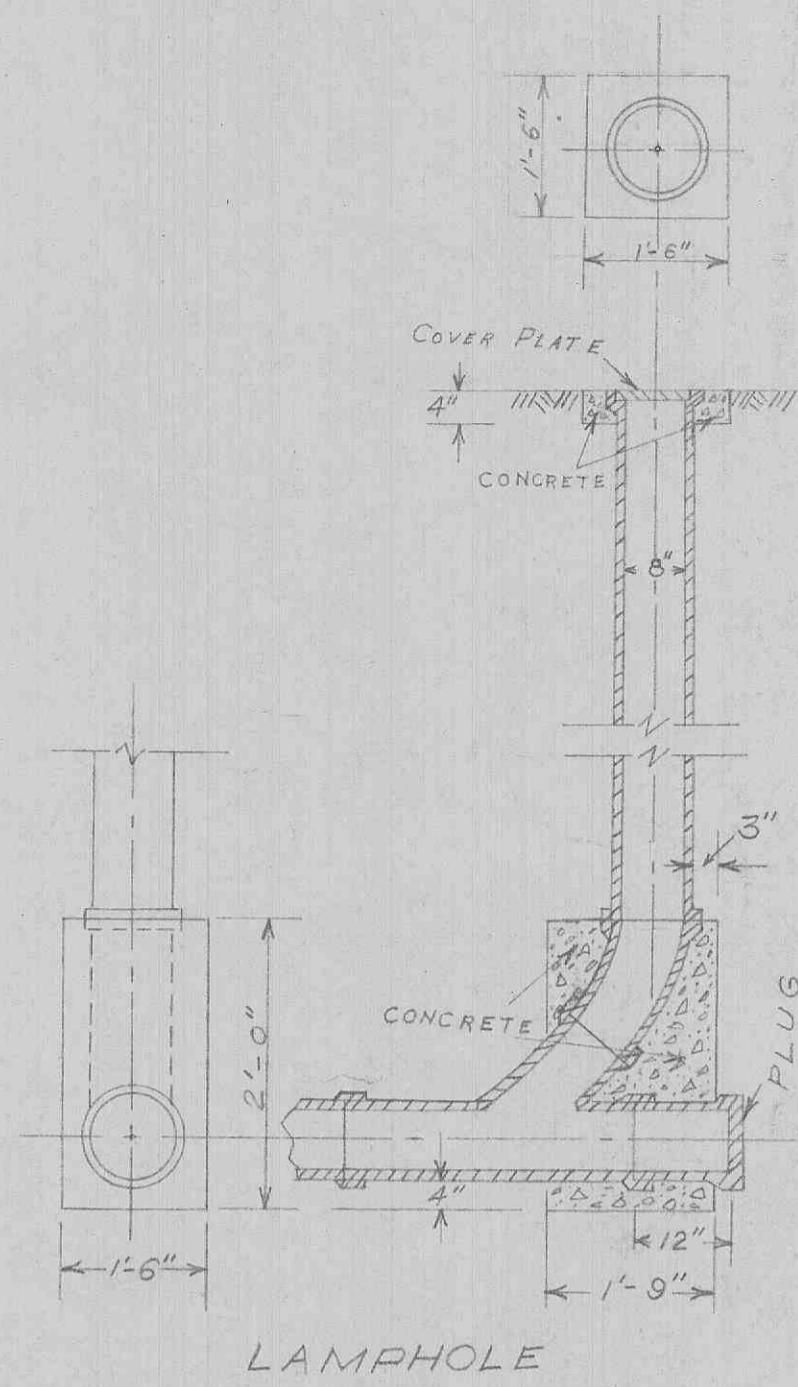
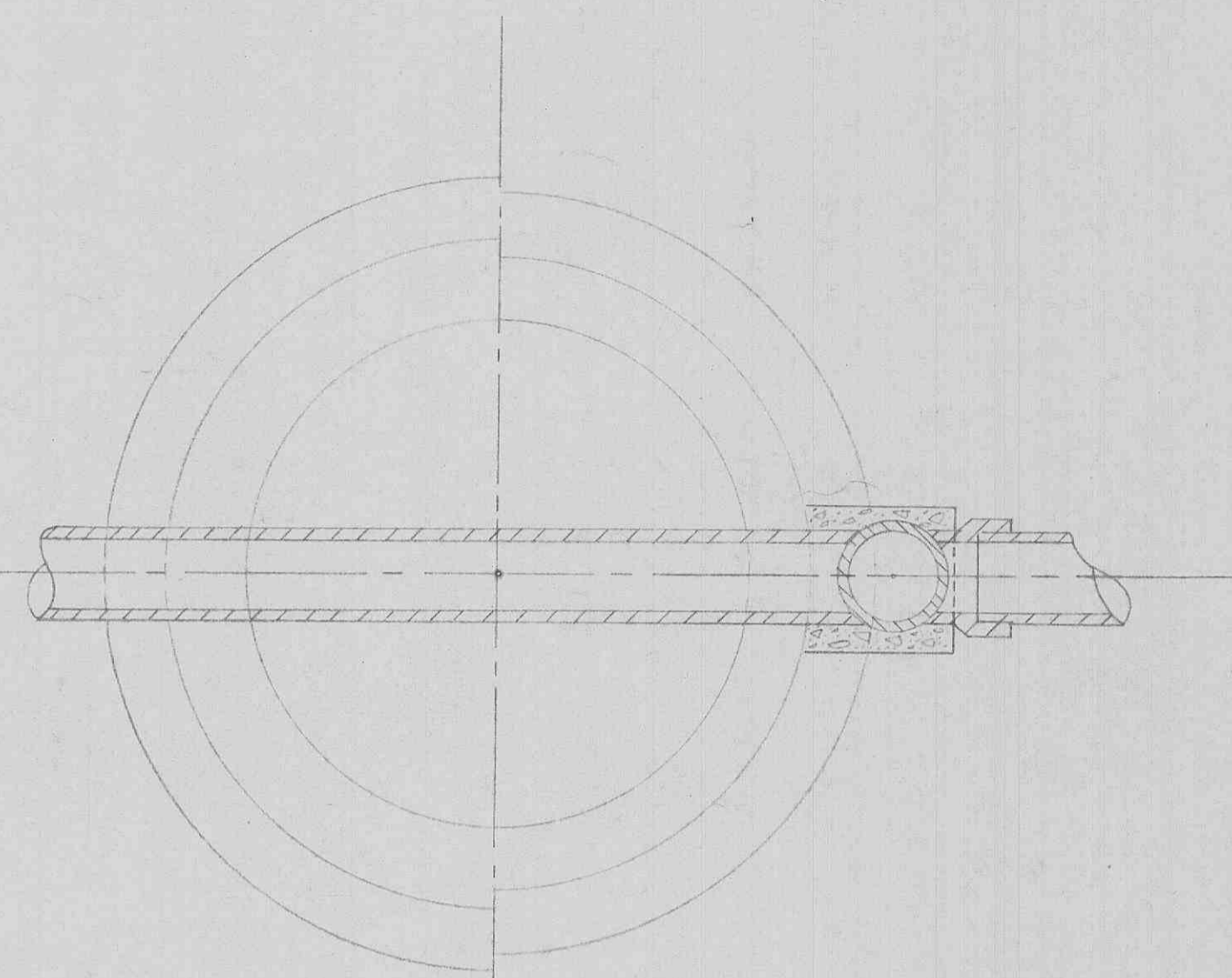
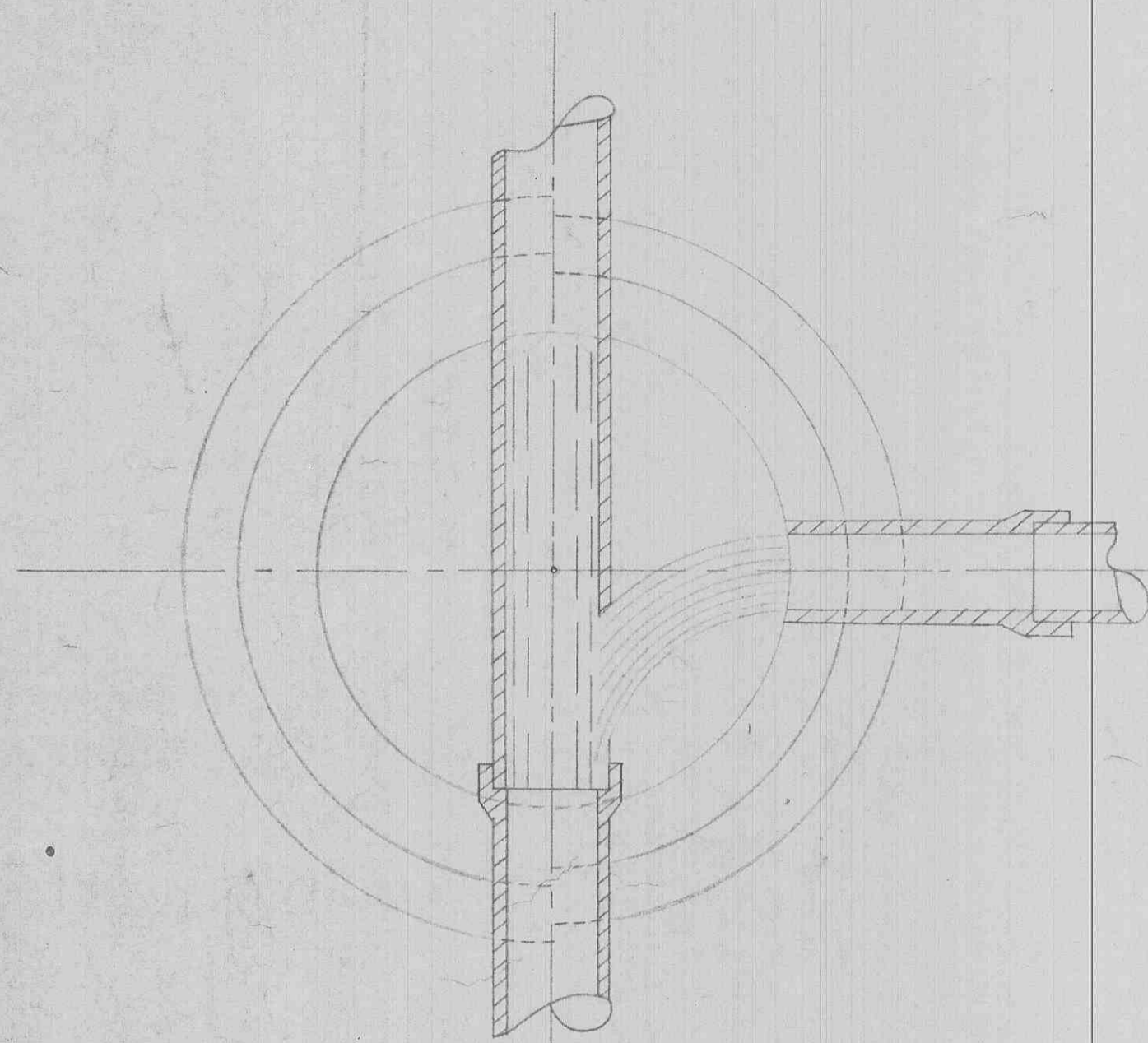
DATE: _____
 BY: _____
 CHECKED: _____
 DATE: _____

DATE: _____
 BY: _____
 CHECKED: _____
 DATE: _____

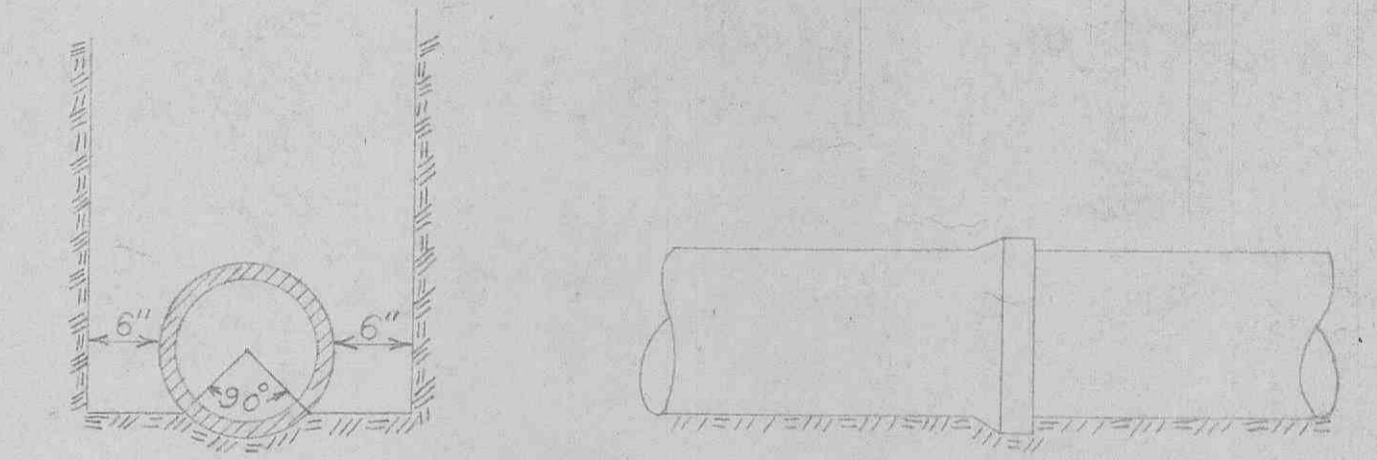


SUNSET TERRACE
 ST. CHARLES COUNTY
 O'FALLON, MISSOURI
 SECTIONS B, C & D
 VERT SCALE: 1" = 10'
 HORIZ SCALE: 1" = 40'
 DATE MARCH 20, 1927
 ALVIN BODENSTEIN - OWNER
 SHEET NO. 2

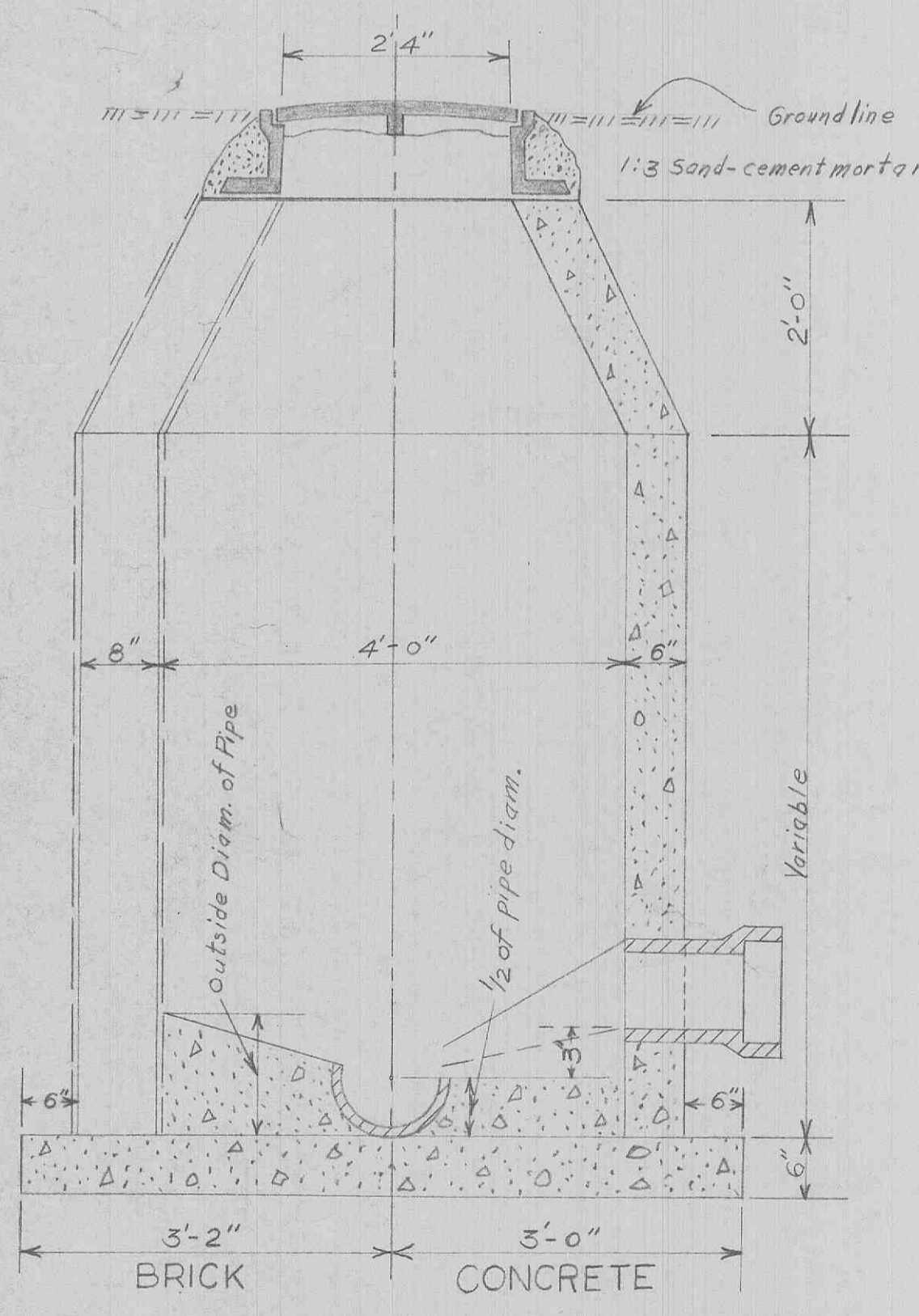
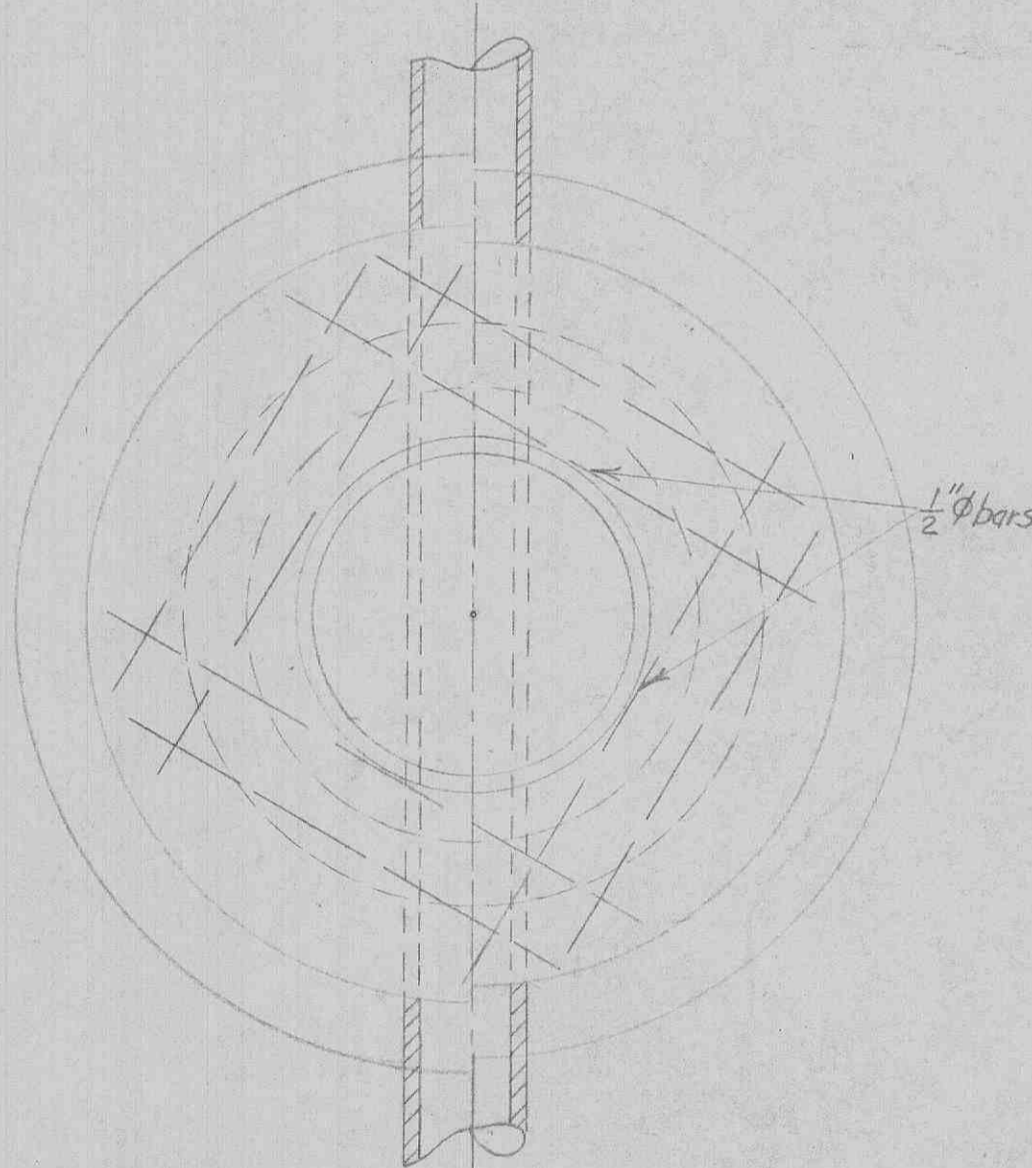
John L. Rocha
 Registered Engineer



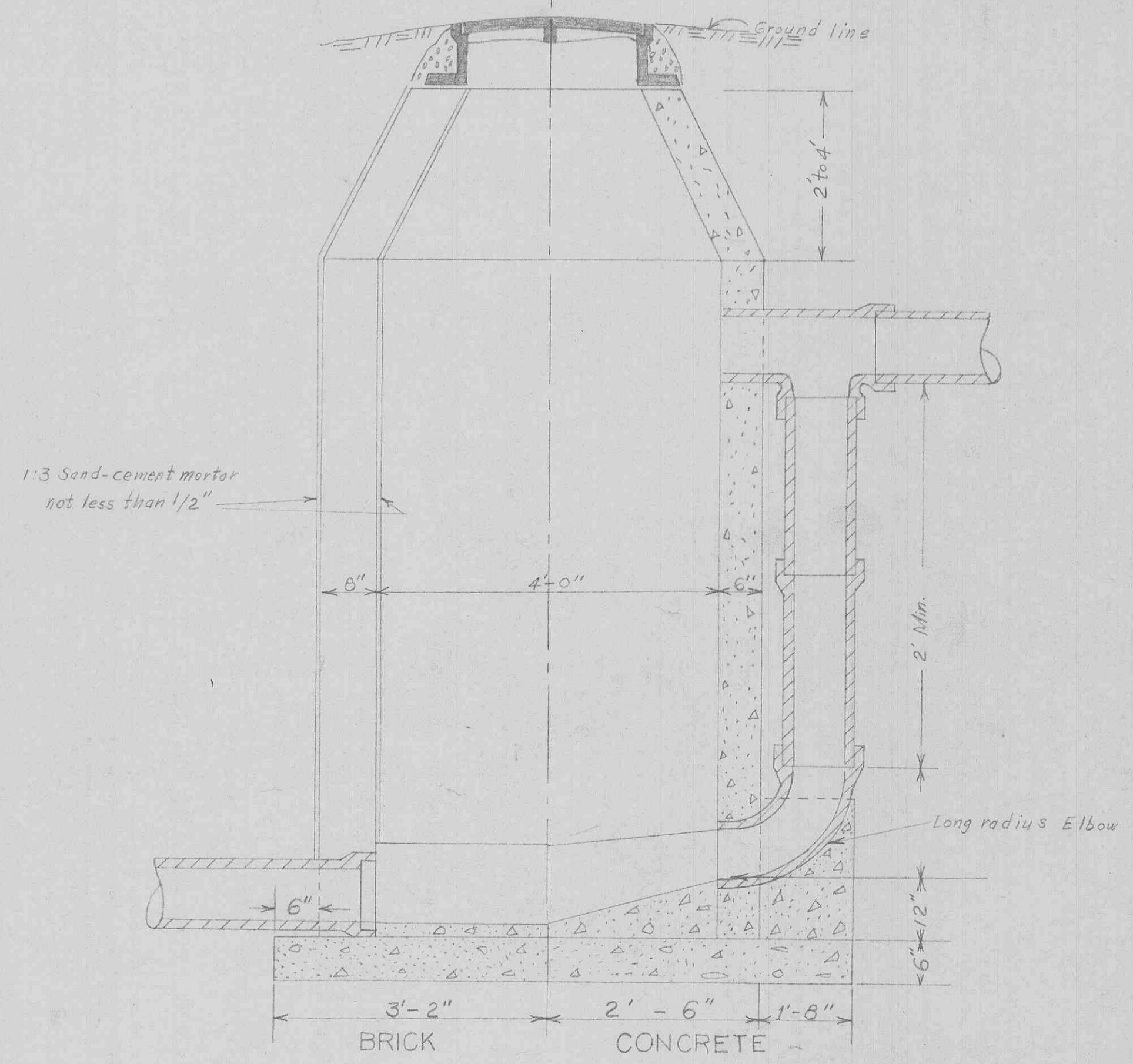
JOINT SECTION



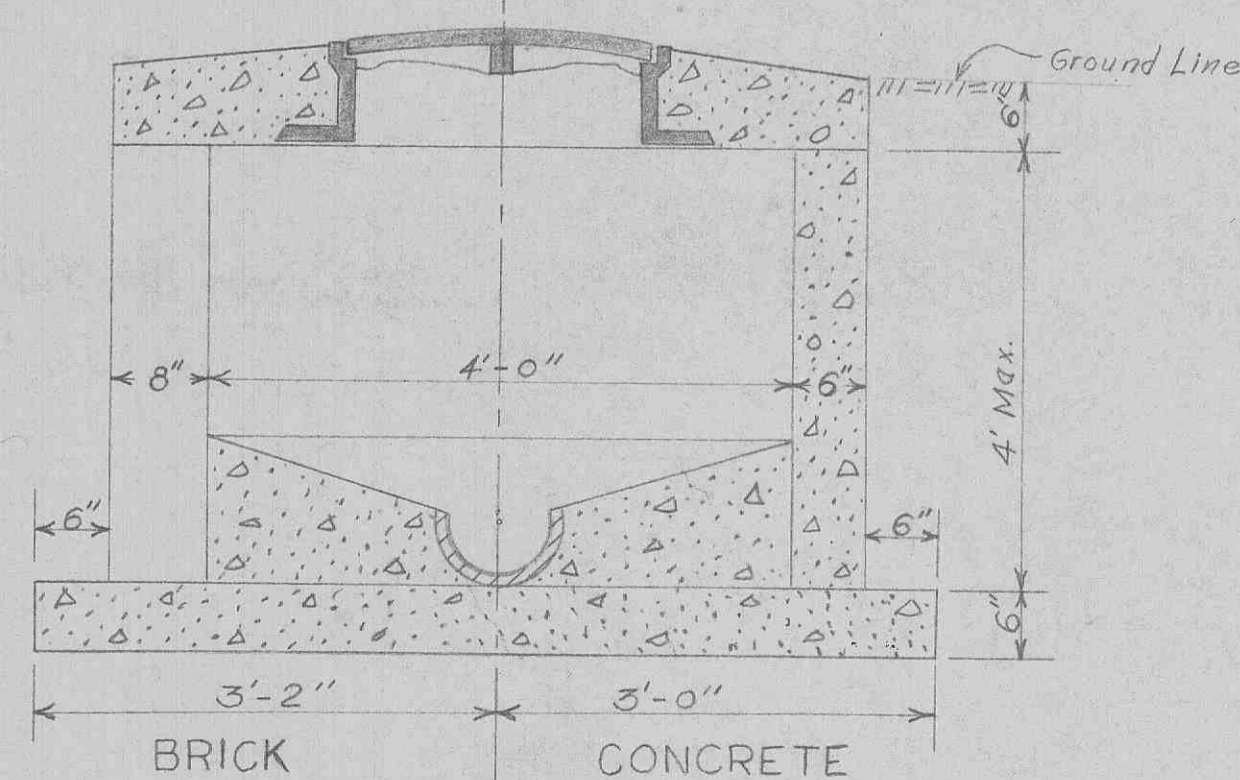
PIPE LAYING DETAILS



HALF SECTION
STANDARD MANHOLE



HALF SECTION
DROP MANHOLE



HALF SECTION
SHALLOW MANHOLE

NOTE:
 STEPS WILL BE USED IN MANHOLES ONLY WHEN SPECIFICALLY ORDERED BY THE ENGINEER. WHEN STEPS ARE REQUIRED THEY WILL BE TOWER GROVE FOUNDRY CO. NO. 1219 OR EQUAL.
 PRECAST CONCRETE MAY BE USED, PROVIDED, CONSTRUCTION DETAILS ARE APPROVED BY THE ENGINEER PRIOR TO THE AWARD OF CONTRACT. FURTHER PROVIDED THAT AN ALTERNATE BID FOR THE PROPOSED TYPE OF MANHOLES WAS INCLUDED IN THE ORIGINAL PROPOSAL.
 PLASTER BOTH SIDES OF BRICK MANHOLES WITH 1:3 SAND-CEMENT MORTAR.
 USE TOWER GROVE FOUNDRY No. 1113 MANHOLE FRAME WITH No. 1023 COVER & TOWER GROVE FOUNDRY No. 1039 LAMP HOLE FRAME & COVER OR EQUAL