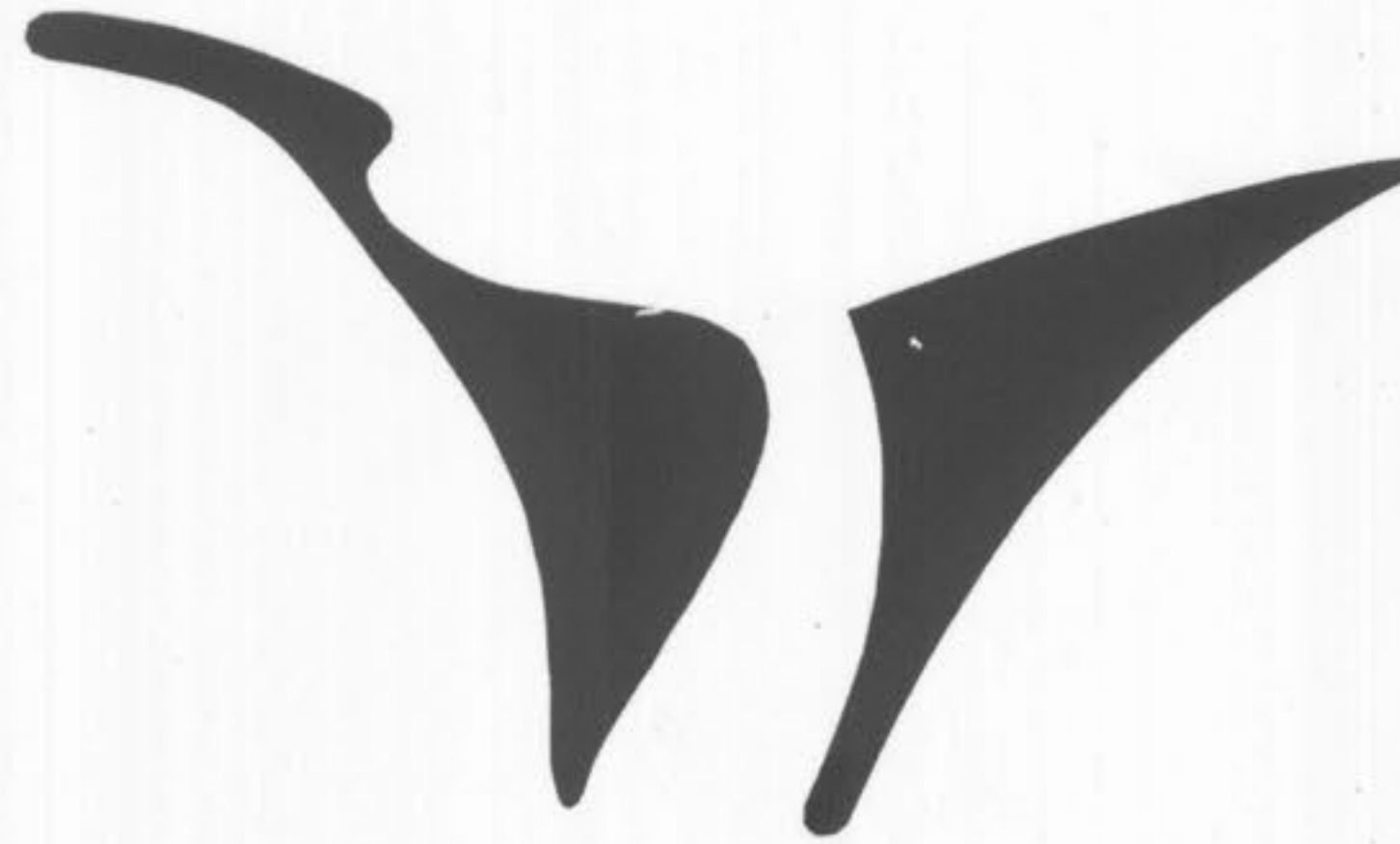


5933 South Highway 94, Suite 201
St. Charles, Missouri 63304-5611
636-939-5155

VOLZ

Engineers
Land Planners
Land Surveyors



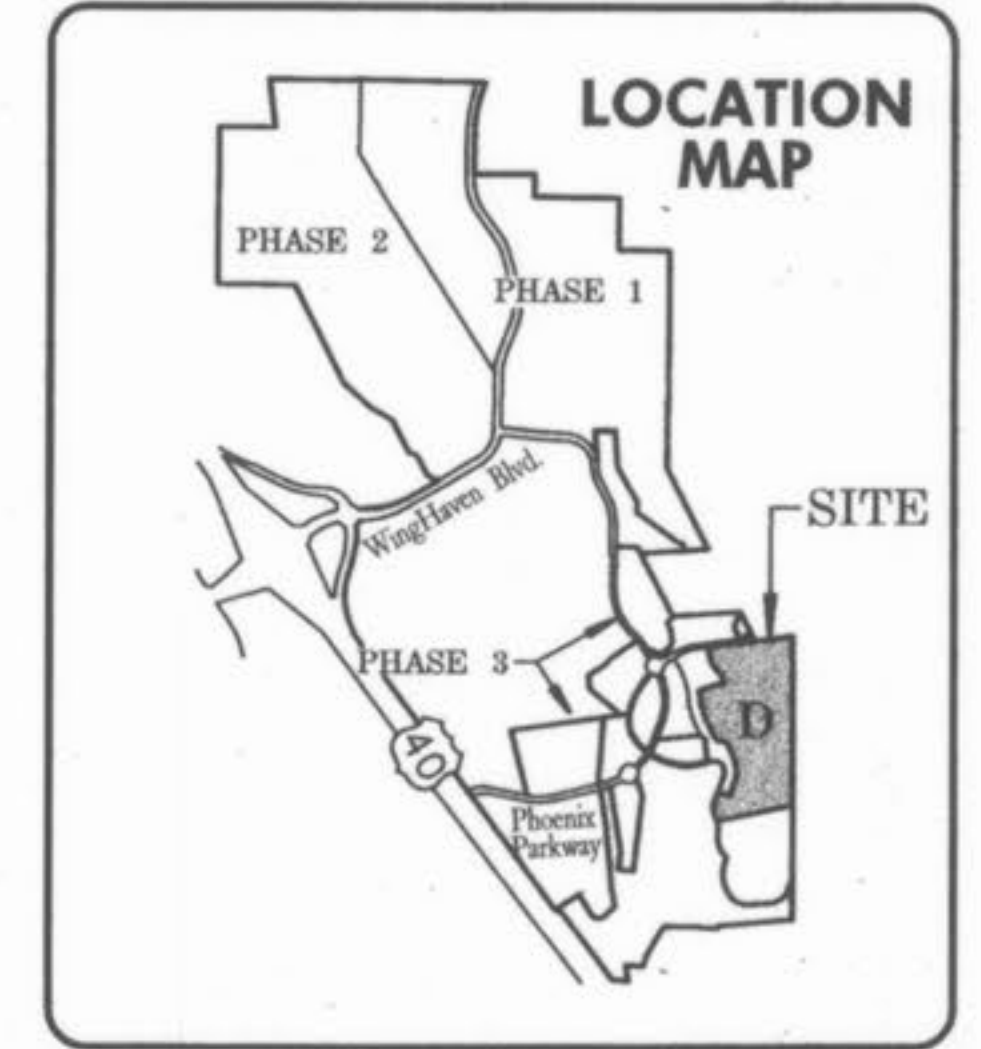
WINGHAVEN

PHASE 3

THUNDER HILL VILLAGE

AS-BUILT PLANS

WINGHAVEN RESIDENTIAL L.L.C.



B.M. LOOP NOTES

U.S.G.S. DATUM BENCHMARK
(Provided by the Missouri Department of Transportation)

ELEVATION 616.50 at Dardenne Prairie, T. 46N., R. 2E., near approximate corner sections 1, 2, 11 & 12, 31' N. and 20' W. of Crossroads, the intersection of State Highway "N" with Post Road and Hanley Road, 49' S. of S.E. Corner of Catholic Church, 2.0' N. of sidewalk, and in concrete post, standard tablet stamped "TT 60 C 1936 616."

The existing sewer lengths, sizes, flowlines, depths of structures and sewers and locations with respect to existing or proposed easements have been measured. The results of those measurements are shown on this set of Final Measurement Plans. Since the wye locations have been plotted from information provided by the sewer contractor or other sources, I disclaim any responsibility for that specific information.

All public sewers are located within designated existing or proposed easements except as shown in this drawing.

The results of those measurements are shown on this drawing by lining out the planned number and indicating the measured number adjacent to the planned number. All other numbers shown have not been measured or verified.

The location of the sewers were determined by locating the manholes and traversing in a straight line between them.

No hydraulic computations have been done on the measured lines to verify or confirm the capacity, freeboard or design requirements of the sewers.



Roger G. Allen
Roger G. Allen
Mo. Reg. L.S. 2185



TOTAL VILLAGE ACREAGE	R.O.W. ACREAGE	COMMON GROUND	NET VILLAGE ACREAGE	TOTAL NUMBER OF UNITS	MINIMUM LOT SIZE (SQ FT)	FRONT SETBACK	SIDE SETBACK	REAR SETBACK	STREET FRONTAGE (LINEAR)	NUMBER OF STREET TREES
31.449	4.49	8.00	18.95	68	7,500	15'	5'	5'	9073	

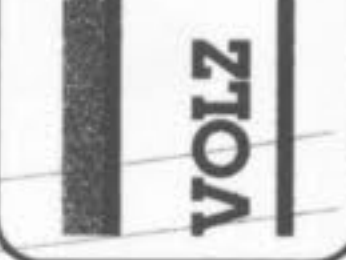


NOTE
All new utilities installed within this subdivision to be located underground.

The underground utilities shown herein were plotted from available information and do not necessarily reflect the actual existence, or nonexistence, size, type, number, or location of these or other utilities. The general contractor shall be responsible for verifying the actual location of all underground utilities in the field, shown or not shown, prior to any grading, excavation, or construction of improvements. These provisions shall in no way absolve any party from complying with the Underground Facility Safety and Damage Prevention Act, Chapter 319, RSMo.

NOTE
Winghaven - Thunder Hill Village will be part of Winghaven Residential Owners Association, Inc., which includes all of the Winghaven Development, Phases 1, 2, and 3. The alleys in Winghaven Phase 3 are private and will remain private forever and never to be maintained or accepted by the City of O'Fallon.

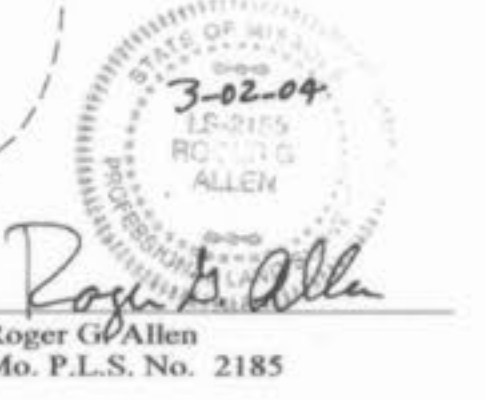
WINGHAVEN
RESIDENTIAL L.L.C.
*MCBRIDE & SON
CORPORATE CENTER DRIVE
ST. LOUIS, MISSOURI 63005
PHONE: (314) 937-2000



WINGHAVEN

THUNDER HILL VILLAGE AS-BUILT PLANS

SITE PLAN
Design By: G.A.S.
Drawn By: M.M.M.
Checked By: E.A.K.
B-6500



FINAL SEWER MEASUREMENTS

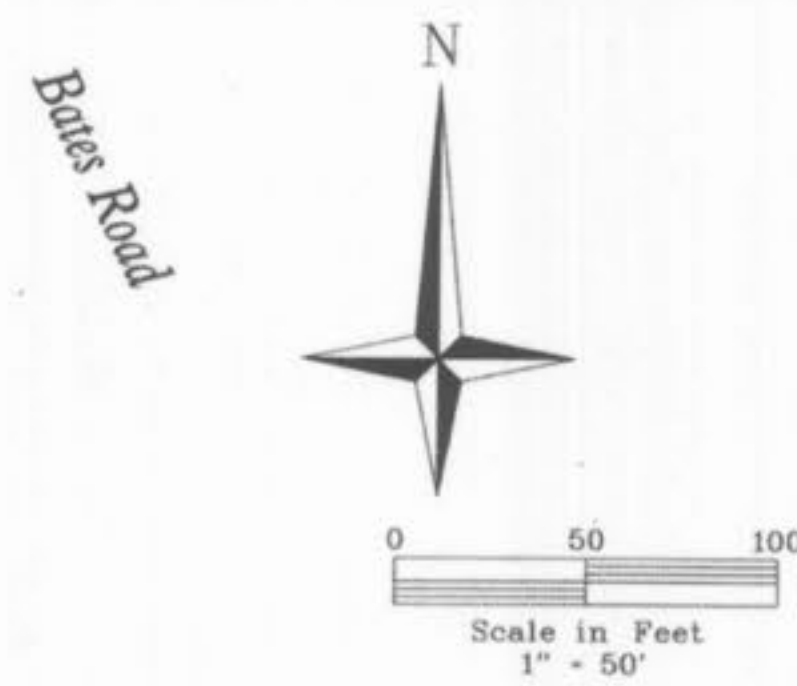
Thunder Hill App. 4/21/04 ARK as built



Storm Sewers Within The Private Alleys Will Be Maintained By Winghaven Residential Owners Association, Inc. The alleys in Winghaven Phase 3 are private and will remain private forever and never to be maintained or accepted by the City of O'Fallon.

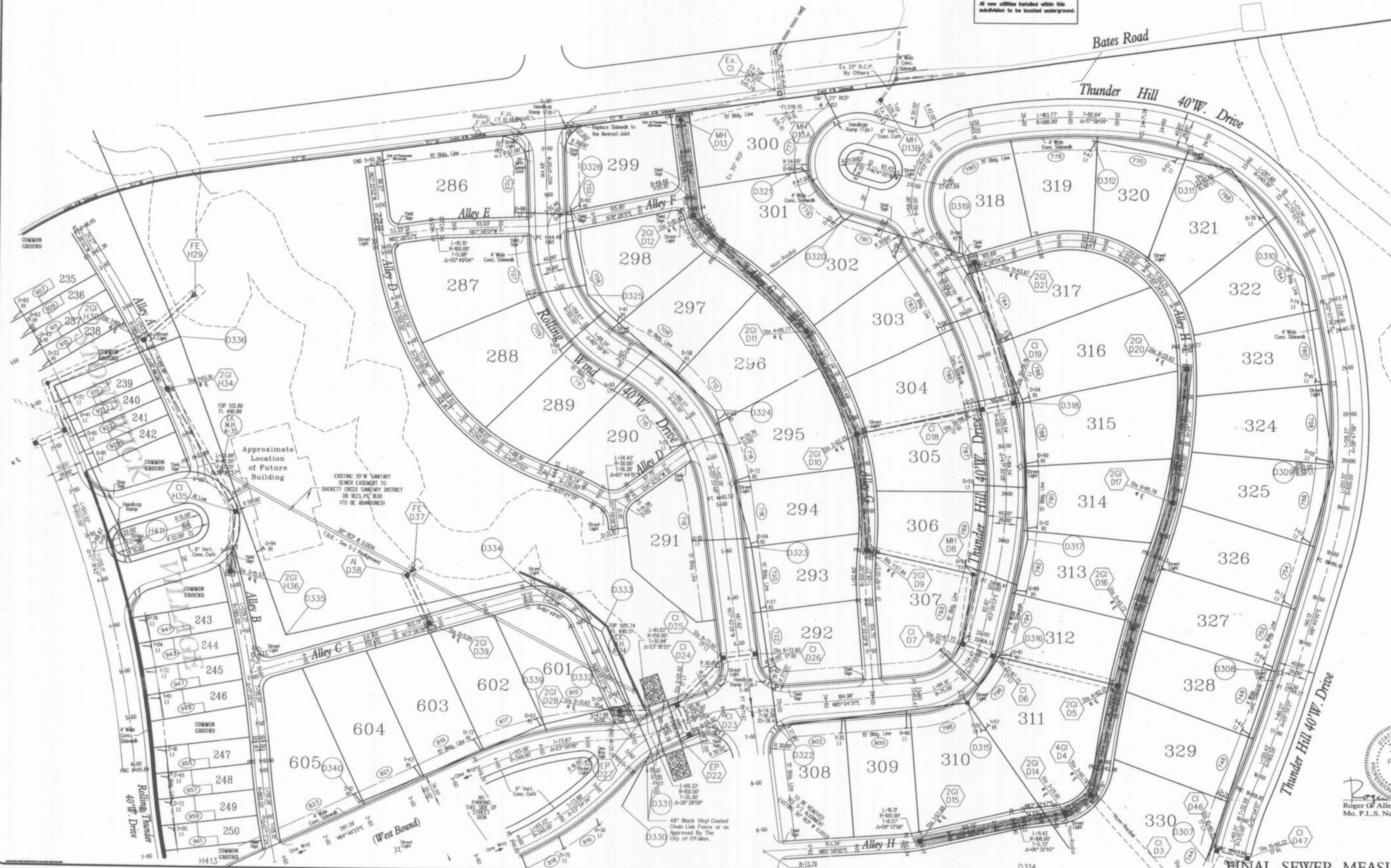


Storm Sewers Within Common Ground And Public Right Of Way To Be Accepted And Maintained By The City of O'Fallon.



NOTE
Winghaven - Thunder Hill Village will be part of Winghaven Residential Owners Association, Inc. which includes all of the Winghaven Development, Phases 1, 2, and 3. The alleys in Winghaven Phase 3 are private and will remain private forever and never to be maintained or accepted by the City of O'Fallon.

NOTE
All new utilities installed within this subdivision to be located underground.



"WHITETAIL ESTATES"

Professional Engineer Seal
STATE OF MISSOURI
3-02-04
LS-2185
ROGER G. ALLEN
Roger G. Allen
Mo. P.L.S. No. 2185

WINGHAVEN
RESIDENTIAL L.L.C.
11 MCBRIDE & SON
CORPORATE CENTER DRIVE
ST. LOUIS, MISSOURI 63005
PHONE (314) 937-2000



WINGHAVEN

THUNDER HILL VILLAGE AS-BUILT PLANS

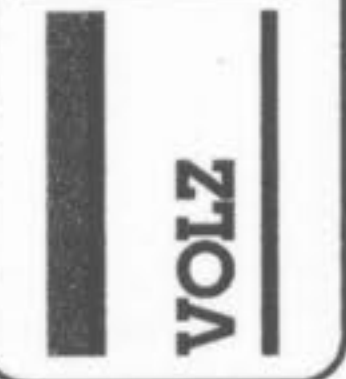
STORM SEWER
MAINTENANCE

Design By: G.A.S.
Drawn By: M.W.M.
Checked By: E.A.C.

04-27-01
3A



WINGHAVEN
RESIDENTIAL L.L.C.
*1 MCBROE & SON
CORPORATE CENTER DRIVE
ST. LOUIS, MISSOURI 63005
PHONE (314) 537-2000



WINGHAVEN

THUNDER HILL VILLAGE AS-BUILT PLANS

SITE PLAN	Design By: G.A.S.
	Drawn By: M.W.M.
Checked By: E.A.K.	
Base Map No. 00-00	
P. * 00000-00	
B-8000	
09-10-01	
04	

NOTE
All new utilities installed within this subdivision to be located underground.

NOTE
Winghaven - Thunder Hill Village will be part of Winghaven Residential Owners Association, Inc., which includes all of the Winghaven Development, Phases 1, 2, and 3. The alleys in Winghaven Phase 3 are private and will remain private forever and never to be maintained or accepted by the City of O'Fallon.

6" of 15" R.C.P. to be extended into future development area. Swale to be constructed along Red Hawk Parkway to receive interim drainage.
The underground utilities shown herein were plotted from available information and do not necessarily reflect the actual existence, or nonexistence, size, type, number, or location of these or other utilities. The general contractor shall be responsible for verifying the actual location of all underground utilities in the field, shown or not shown, prior to any grading, excavation, or construction of improvements. These provisions shall in no way absolve any party from complying with the Underground Facility Safety and Damage Prevention Act, Chapter 319, RSMo.

Roger G. Allen
LS-2185
ROGER G. ALLEN
3-07
Professional Engineer
State of Missouri
No. P.L.S. No. 2185

FINAL SEWER MEASUREMENTS

Thunder Hill App 4/24/04 AS-Built



NOTE
All new utilities installed within this subdivision to be located underground.

NOTE
Winghaven - Thunder Hill Village will be part of Winghaven Residential Owners Association, Inc., which includes all of the Winghaven Development, Phases 1, 2, and 3. The alleys in Winghaven Phase 3 are private and will remain private forever and never to be maintained or accepted by the City of O'Fallon.

The underground utilities shown herein were plotted from available information and do not necessarily reflect the actual existence, or nonexistence, size, type, number, or location of these or other utilities. The general contractor shall be responsible for verifying the actual location of all underground utilities in the field, shown or not shown, prior to any grading, excavation, or construction of improvements. These provisions shall in no way absolve any party from complying with the Underground Facility Safety and Damage Prevention Act, Chapter 319, RSMo.

NOTE: TO BE INSTALLED WITH THUNDER HILL VILLAGE.

NOTE: TO BE INSTALLED WITH THUNDER HILL VILLAGE.

WINGHAVEN
RESIDENTIAL L.L.C.
A MEMBER OF
CORPORATE CENTER DRIVE
ST. LOUIS, MISSOURI 63025
PHONE (314) 537-2000



WINGHAVEN

THUNDER HILL VILLAGE AS-BUILT PLANS

SITE PLAN	
Base Map No. XX-XX	Design By: G.A.S.
P. # XX000-XX	Drawn By: M.W.M.
	Checked By: E.A.K.
	B-6500

"WHITETAIL ESTATES"

FINAL SEWER MEASUREMENTS

05



WINGHAVEN

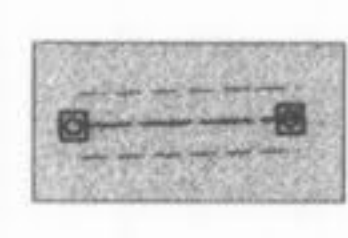
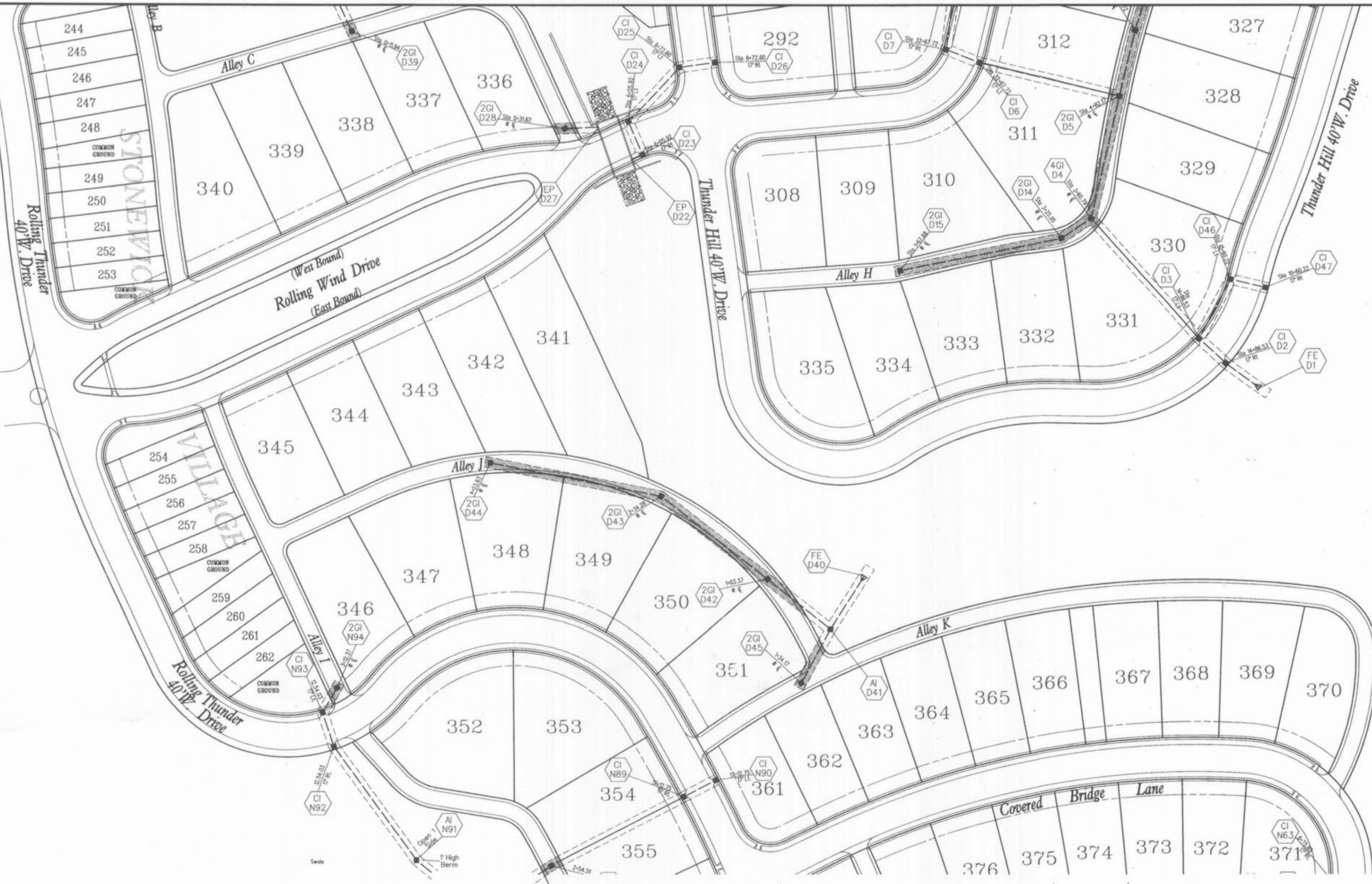
THUNDER HILL VILLAGE AS-BUILT PLANS

STORM SEWER
MAINTENANCE

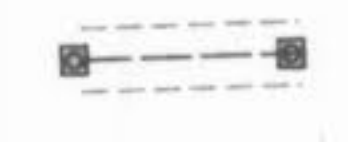
Design By: G.A.S.
Drawn By: M.W.M.
Checked By: E.A.K.

B-6500

08-07-01
5A



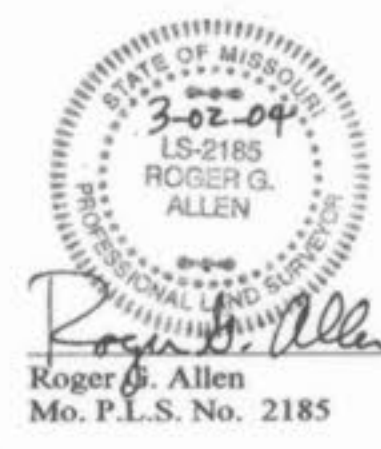
Storm Sewers Within The Private Alleys Will Be Maintained By Winghaven Residential Owners Association, Inc. The alleys in Winghaven Phase 3 are private and will remain private forever and never to be maintained or accepted by the City of O'Fallon.



Storm Sewers Within Common Ground And Public Right Of Way To Be Accepted And Maintained By The City of O'Fallon.

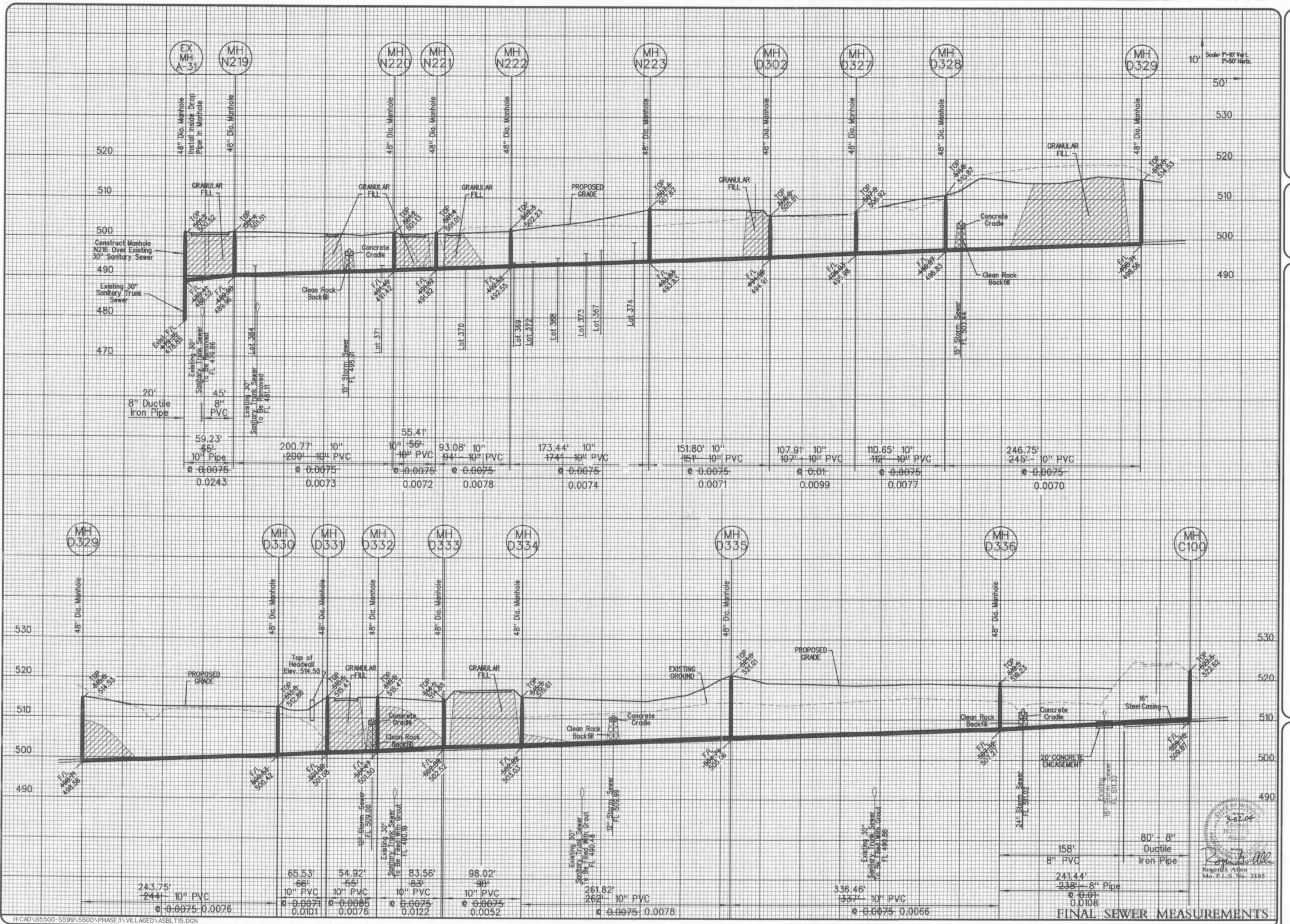
NOTE
All new utilities installed within this subdivision to be located underground.

NOTE
Winghaven - Thunder Hill Village will be part of Winghaven Residential Owners Association, Inc., which includes all of the Winghaven Development, Phases 1, 2, and 3. The alleys in Winghaven Phase 3 are private and will remain private forever and never to be maintained or accepted by the City of O'Fallon.

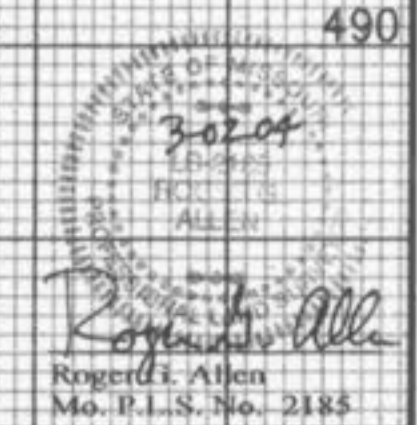


FINAL SEWER MEASUREMENTS

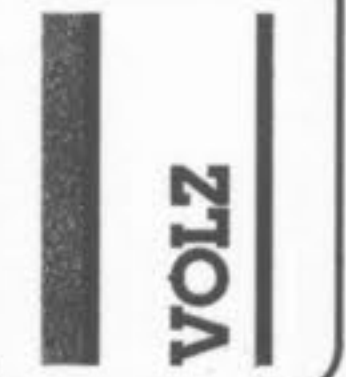
Thunder Hill App #12/01 ARC App #12/01



H:\CAD\B5500-5599\5500\PHASE 3\VILLAGE\ASBLT15.DGN



WINGHAVEN
RESIDENTIAL L.L.C.
11 MCBRIDE & SON
CORPORATE CENTER DRIVE
SPRINGFIELD, MISSOURI 65704
PHONE (314) 537-2000

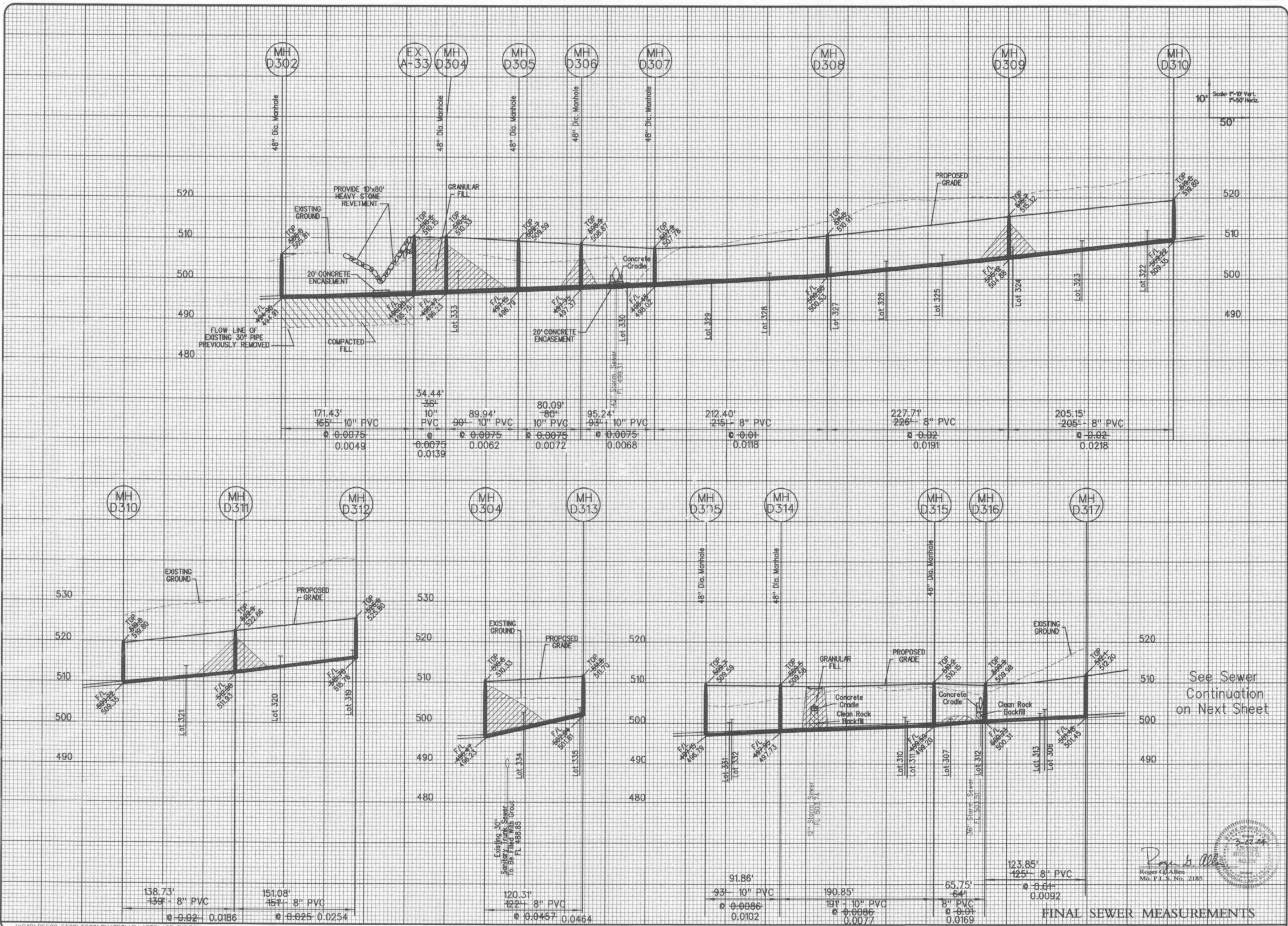


WINGH AVEN™

THUNDER HILL VILLAGE AS-BUILT PLANS

SANITARY SEWER PROFILES
Design By: D.A.S.
Drawn By: M.W.M.
Checked By: E.A.K.
B-600

Thunder Hill App 4/24/09 ASB



See Sewer Continuation on Next Sheet

Roger C. Allen
 Roger C. Allen
 Mo. P.E. No. 2185

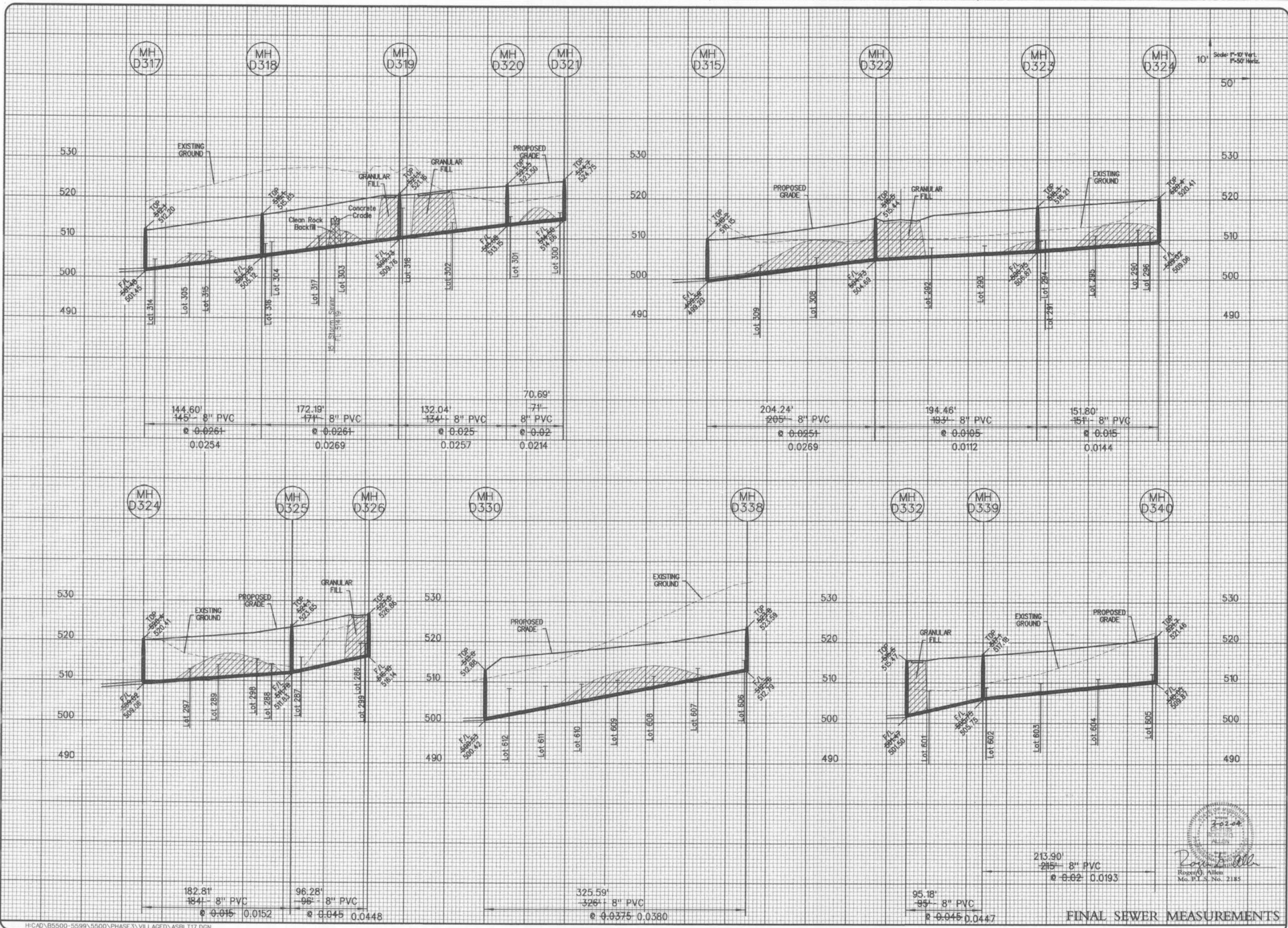
FINAL SEWER MEASUREMENTS

WINGHAVEN
 RESIDENTIAL L.L.C.
 *MORROW & SON
 CORPORATE CENTER DRIVE
 ST. LOUIS, MISSOURI 63005
 PHONE (314) 537-2000



WINGHAVEN™
 THUNDER HILL VILLAGE AS-BUILT PLANS

SANITARY SEWER PROFILES
 Design By: G.A.S.
 Drawn By: M.W.M.
 Checked By: E.A.K.
 B-6500
 (15-06-01)
 16



H:\CAD\B5500-5599\5500\PHASE 3\WINGHAVEN\ASBL T17.DGN



FINAL SEWER MEASUREMENTS

WINGHAVEN
RESIDENTIAL L.L.C.
BY MURPHY & SON
CORPORATE CENTER DRIVE
ST. LOUIS, MISSOURI 63005
PHONE (314) 537-2000



WINGHAVEN™
THUNDER HILL VILLAGE AS-BUILT PLANS

SANITARY SEWER PROFILES
Design By: G.A.S.
Drawn By: M.W.M.
Checked By: E.A.K.
B-6000
17

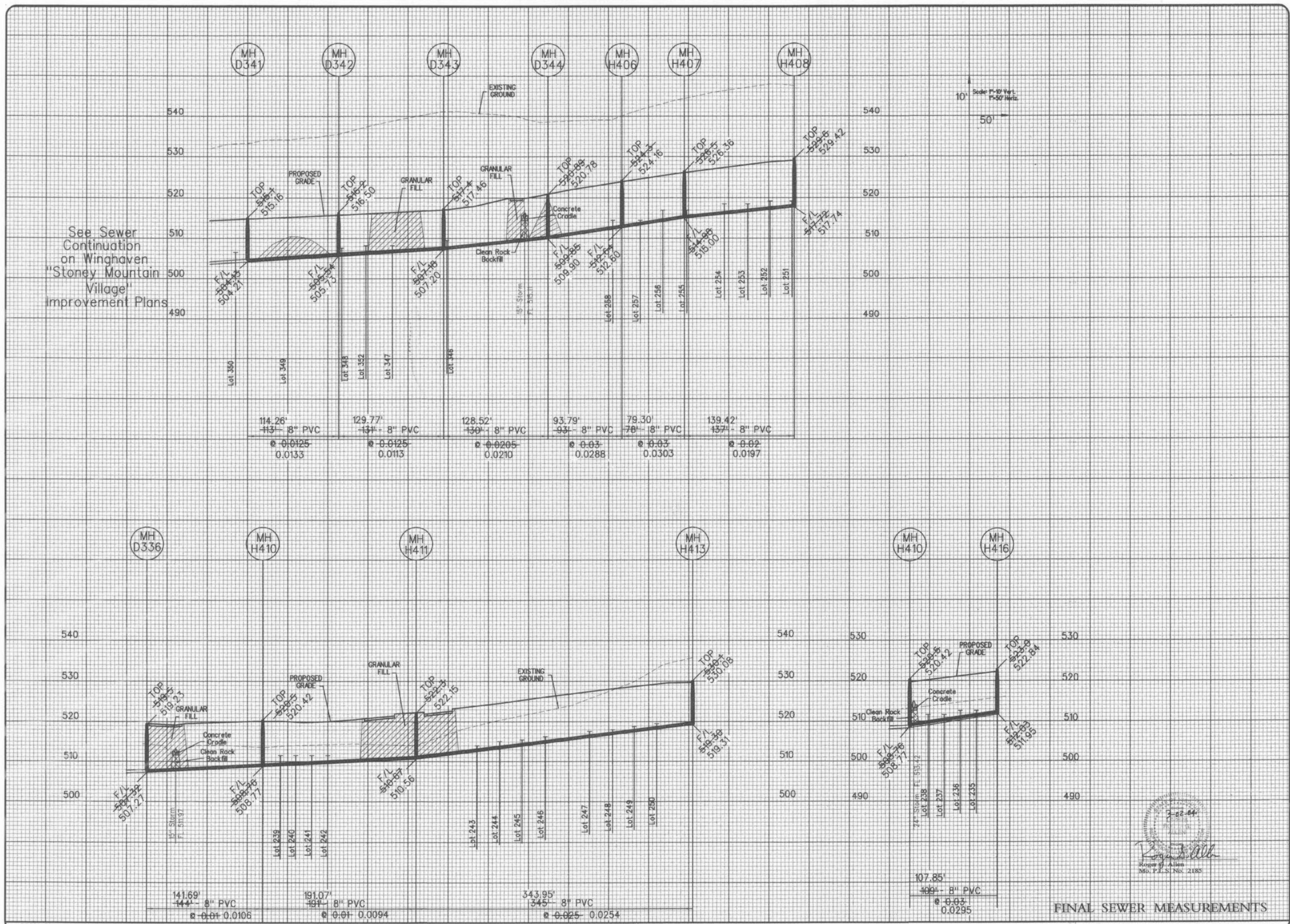
Thunder Hill App 4/29/01 ABC



WINGHAVEN™

THUNDER HILL VILLAGE AS-BUILT PLANS

SANITARY SEWER PROFILES
Design By: G.A.S.
Drawn By: M.W.M.
Checked By: E.A.K.
B-8500

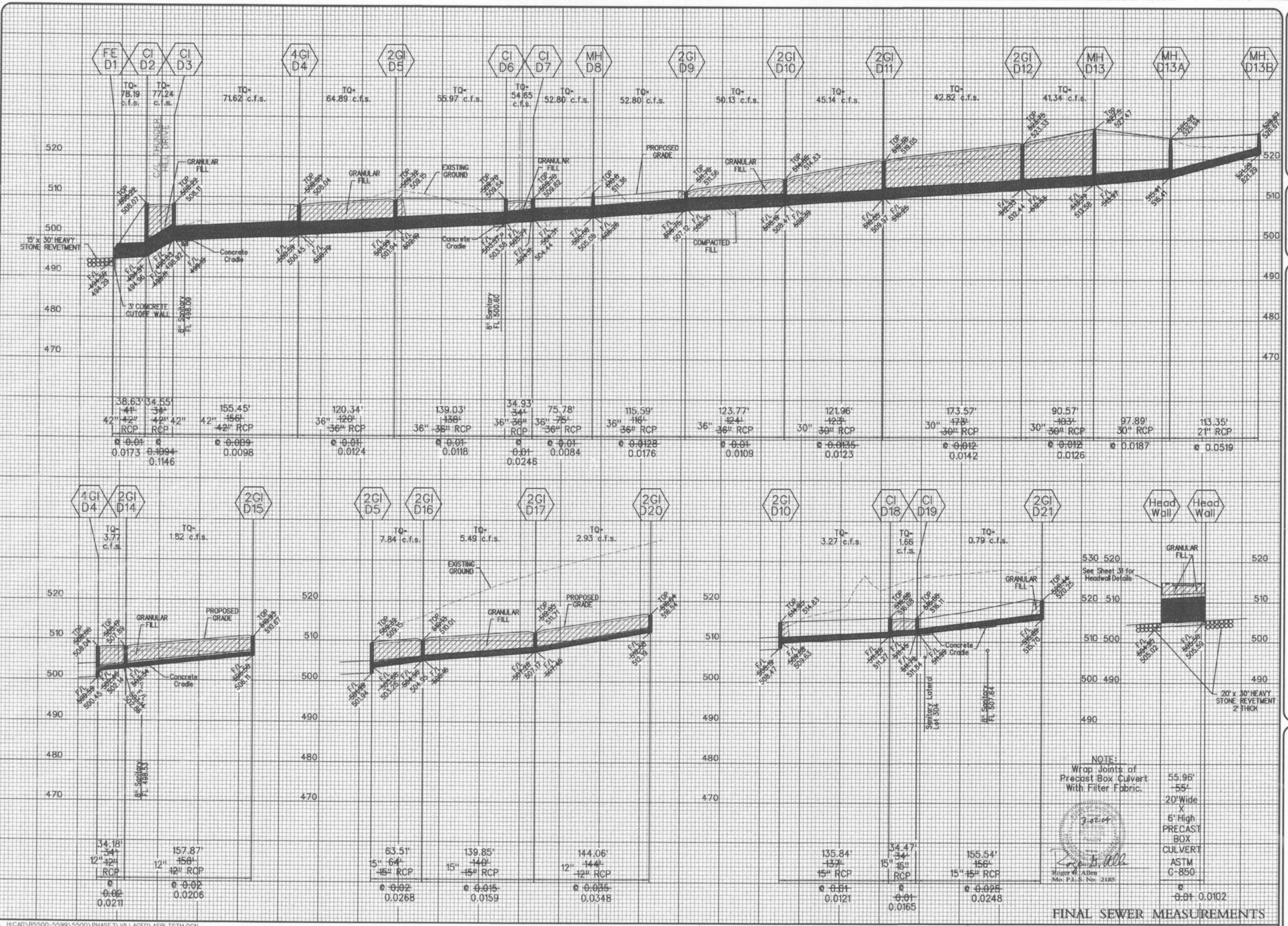


See Sewer Continuation on Winghaven 'Stoney Mountain Village' Improvement Plans

10' Scale: V-10' Vert. H-50' Horiz.

7-02-04
Roger Allen
Mo. P.L.S. No. 2185

FINAL SEWER MEASUREMENTS



WINGHAVEN
RESIDENTIAL L.L.C.
#1 WINGH & SON
CORPORATE CENTER DRIVE
ST. LOUIS, MISSOURI 63005
PHONE (314) 537-2000



WINGHAVEN™

WINGHAVEN™

THUNDER HILL VILLAGE AS-BUILT PLANS

STORM SEWER PROFILES

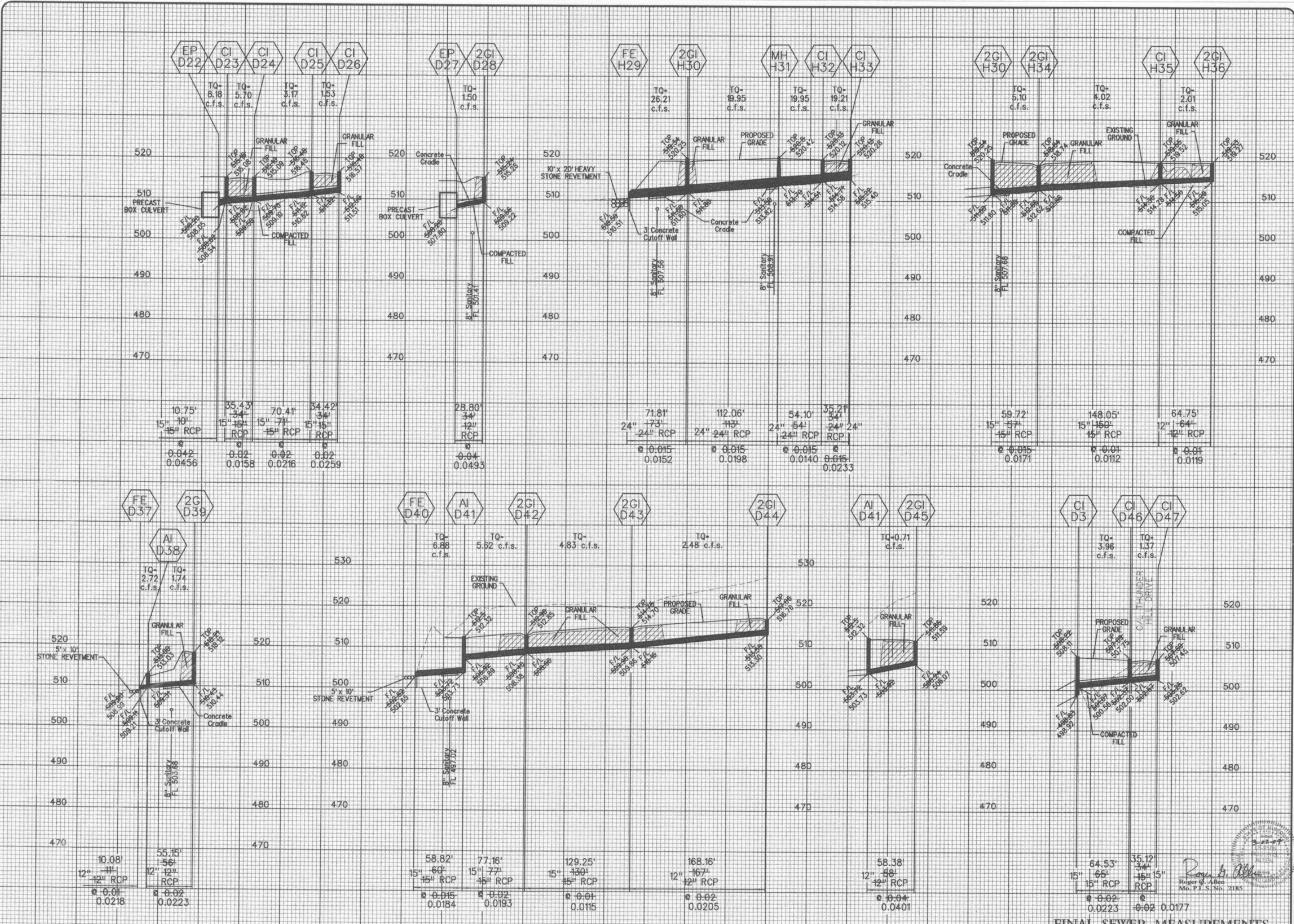
Design By: G.A.E.
Drawn By: M.W.M.
Checked By: E.A.K.
B-6000

15-15-10
19

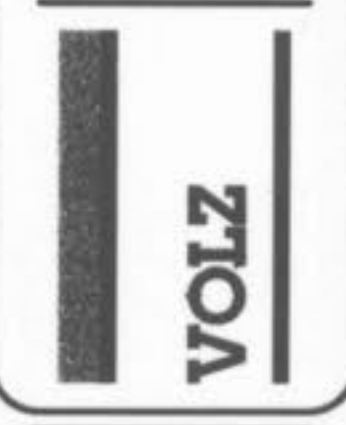
NOTE:
Wrap Joints of
Precast Box Culvert
With Filter Fabric.
20' Wide
X
6' High
PRECAST
BOX
CULVERT
ASTM
C-850

3-22-04
Roger G. Allen
Mo. P.E. No. 21885

FINAL SEWER MEASUREMENTS



WINGHAVEN
RESIDENTIAL L.L.C.
41 WILSON & SON
CORPORATE CENTER DRIVE
ST. LOUIS, MISSOURI 63005
PHONE (314) 537-9000



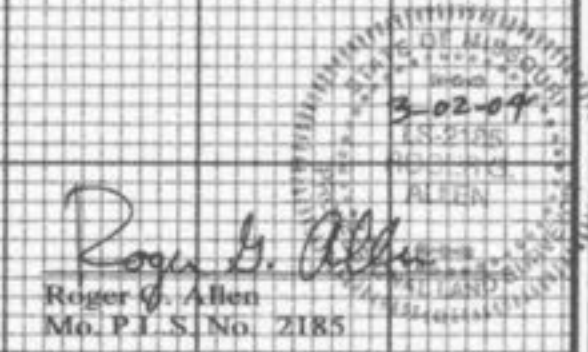
WINGHAVEN™

WINGHAVEN™

THUNDER HILL VILLAGE "D" AS-BUILT PLANS

STORM SEWER PROFILES

Design By: G.A.S.
Drawn By: M.W.M.
Checked By: E.A.K.
B-8000



FINAL SEWER MEASUREMENTS