

WINGHAVEN™

WINGHAVEN® RESIDENTIAL L.L.C. TIMBER MEADOWS VILLAGE SEWER AS-BUILTS

The existing sewer lengths, sizes, flowlines, depths of structures and sewers and locations with respect to existing or proposed easements have been measured. The results of those measurements are shown on this set of Final Measurement Plans. Since the wye locations have been plotted from information provided by the sewer contractor or other sources, I disclaim any responsibility for that specific information.

All public sewers are located within designated existing or proposed easements except as shown in this drawing.

The results of those measurements are shown on this drawing by lining out the planned number and indicating the measured number adjacent to the planned number. All other numbers shown have not been measured or verified.

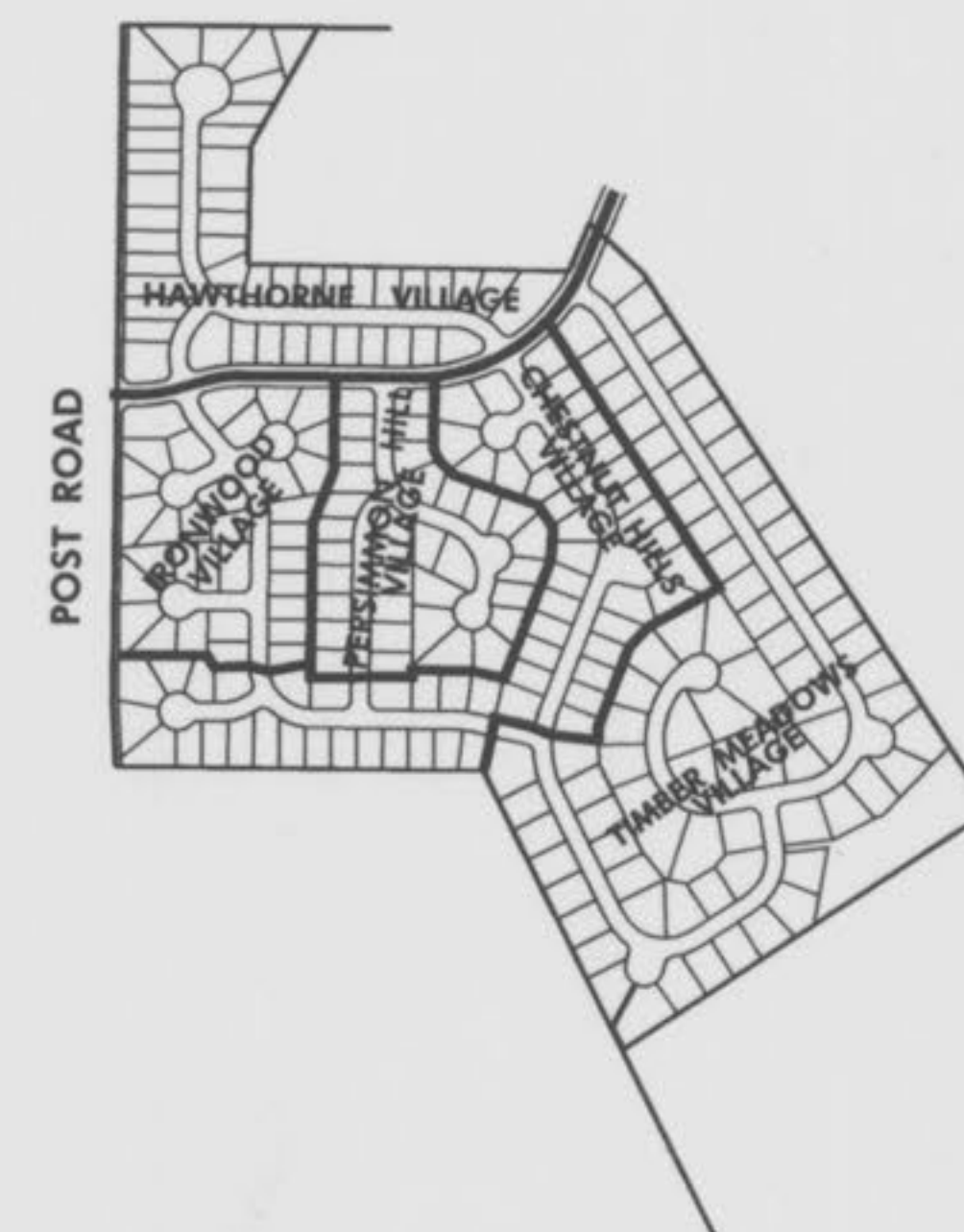
The location of the sewers were determined by locating the manholes and traversing in a straight line between them.

No hydraulic computations have been done on the measured lines to verify or confirm the capacity, freeboard or design requirements of the sewers.

1-10-00

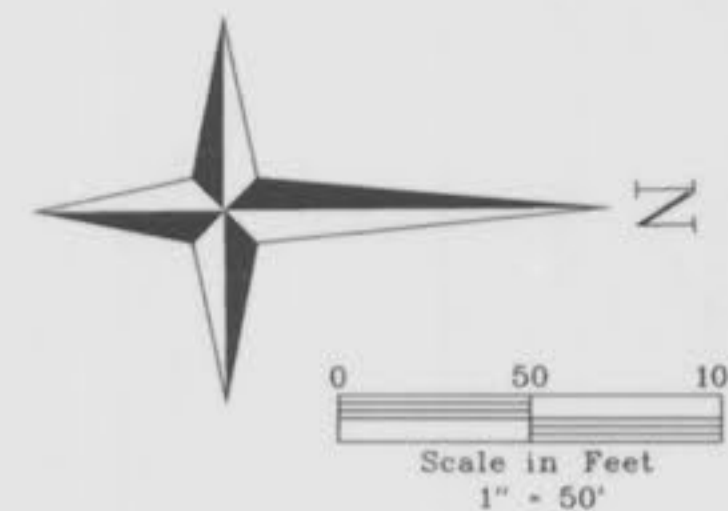
Roger G. Allen
MO. R.L.S. No. 2185

VOLZ



This Site Has no areas within the 100 Year Flood Plain per FIRM Map No. 29183C0220 E

STORMWATER DETENTION FOR WINGHAVEN WILL BE PROVIDED IN SEVERAL DETENTION PONDS WITHIN THE DEVELOPMENT. VOLZ, INC. IS PREPARING A DETENTION STUDY FOR ALL OF WINGHAVEN WHICH WILL SHOW HOW DETENTION IS PROVIDED FOR EACH PHASE OF THE DEVELOPMENT.



ROGER B. ALLEN
 REGISTERED PROFESSIONAL ENGINEER
 NUMBER LS-2185
 ROGER G. ALLEN
 MO. R.L.S. NO. 2185

SEWER AS-BUILTS

WINGHAVEN
 RESIDENTIAL L.L.C.
 *1 MACBROE & SON
 CORPORATE CENTER DRIVE
 ST. LOUIS, MISSOURI 63005
 PHONE (314) 537-2000

VOLZ

WINGHAVEN™
 TIMBER MEADOWS VILLAGE

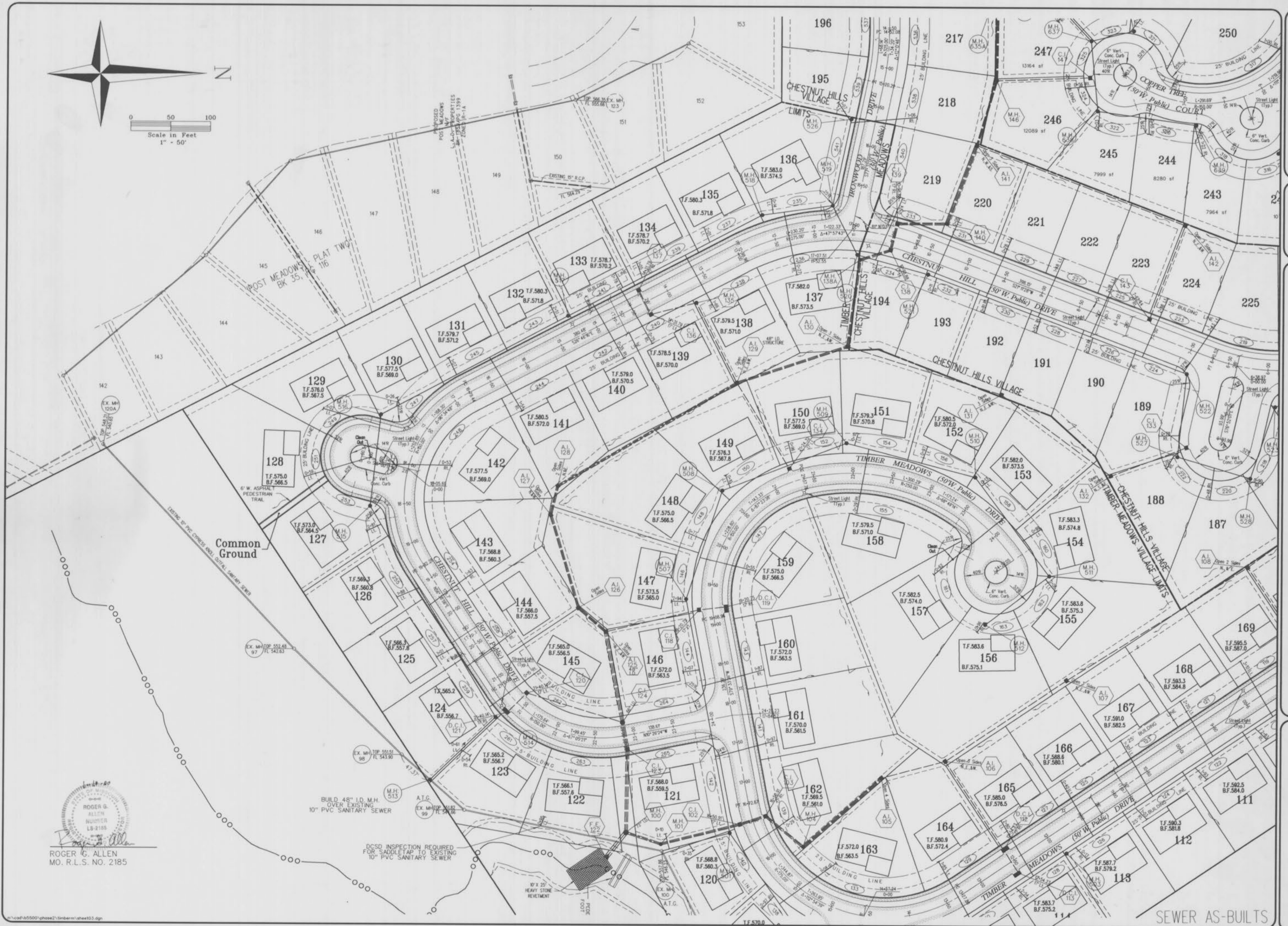
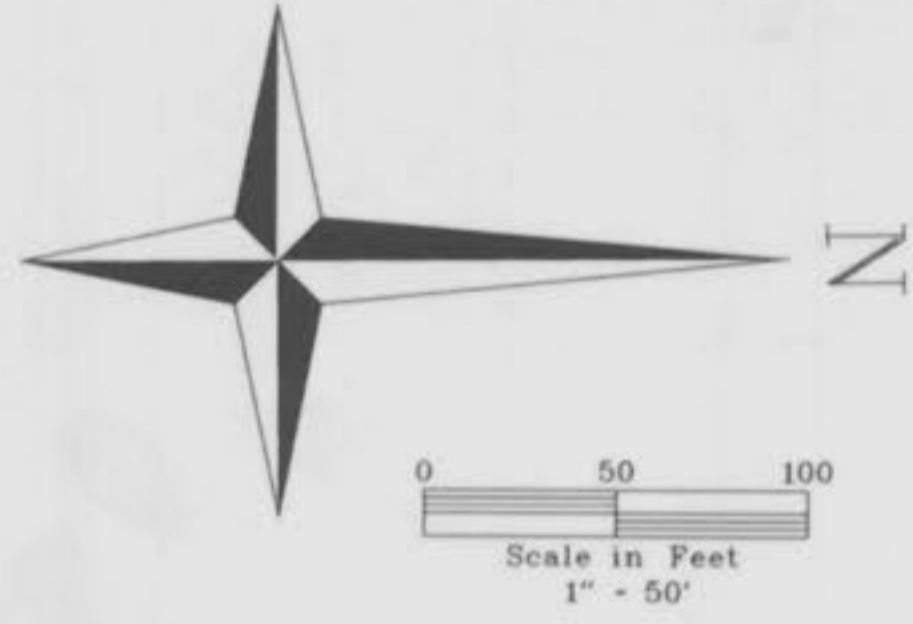
SITE PLAN

Design By: R.L.M.
Drawn By: G.A.S.
Checked By: E.A.K.

5500

7-16-99

2



ROGER G. ALLEN
REGISTERED PROFESSIONAL ENGINEER
NUMBER LB-2185
MO. R.L.S. NO. 2185

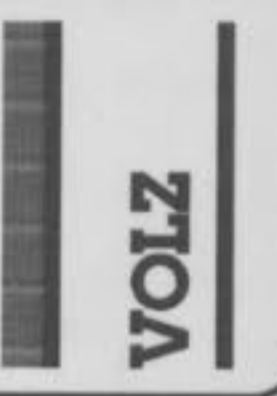
BUILD 48" I.D. M.H. OVER EXISTING 10" PVC SANITARY SEWER
A.T.C. EX. MH. TOP 5182 99 FT. 54.26

DCSD INSPECTION REQUIRED FOR SADDLETAP TO EXISTING 10" PVC SANITARY SEWER

10' X 22' HEAVY STONE RETENMENT

SEWER AS-BUILTS

WINGHAVEN
RESIDENTIAL L.L.C.
*MCBRIDE & SON
CORPORATE CENTER DRIVE
ST. LOUIS, MISSOURI 63005
PHONE (314) 537-2000

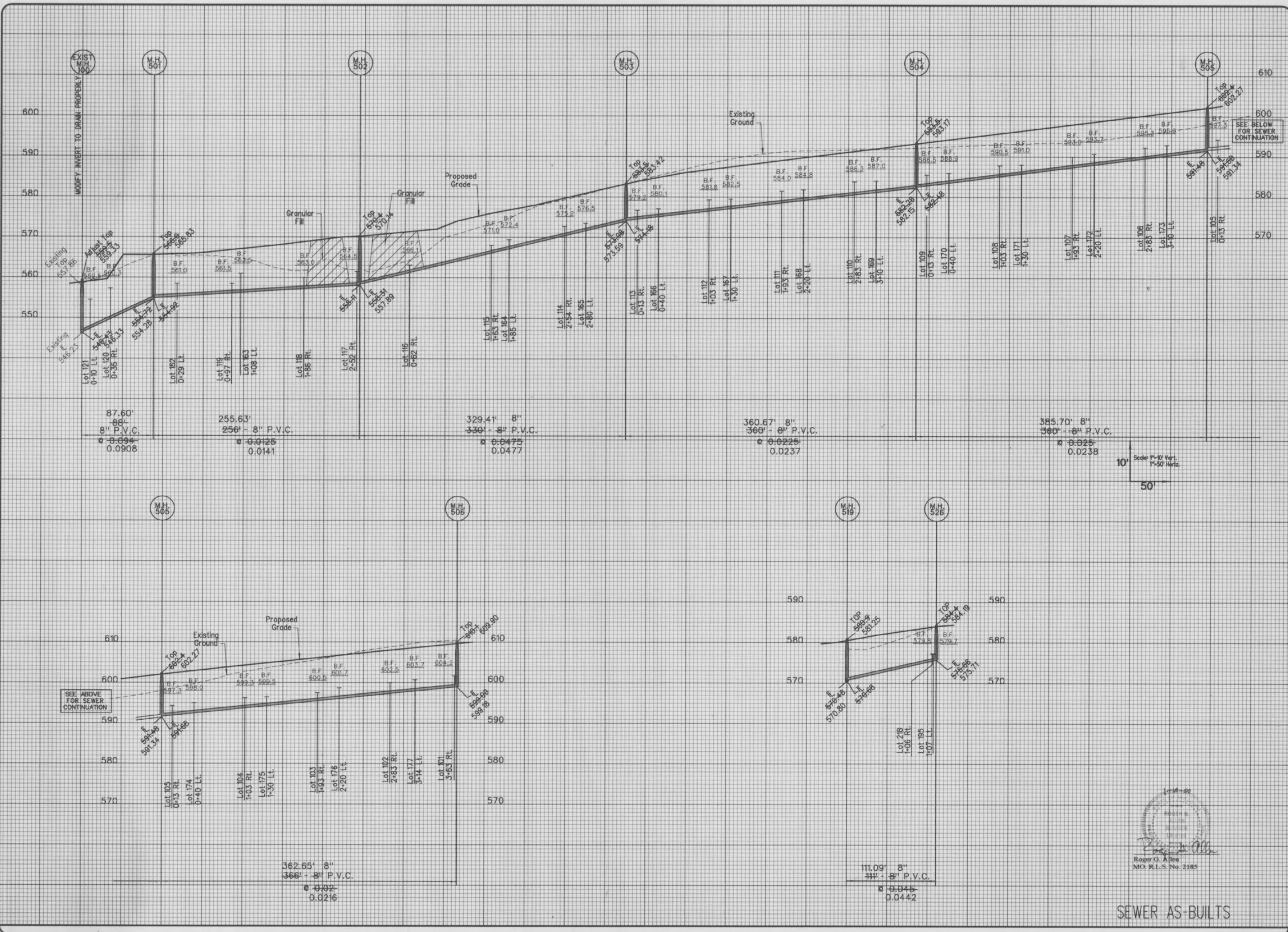


WINGHAVEN™

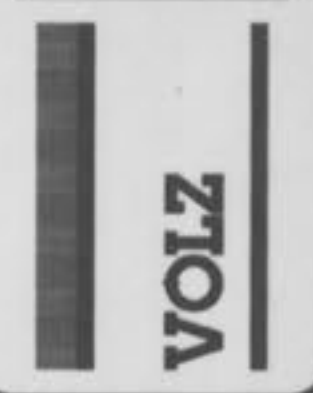
TIMBER MEADOWS VILLAGE

SITE PLAN
Design By: R.L.M.
Drawn By: G.A.S.
Checked By: E.A.K.

5500
9-13-99
3



WINGHAVEN
RESIDENTIAL L.L.C.
*MURKIN & SON
CORPORATE CENTER DRIVE
ST. LOUIS, MISSOURI 63005
PHONE (314) 537-2000

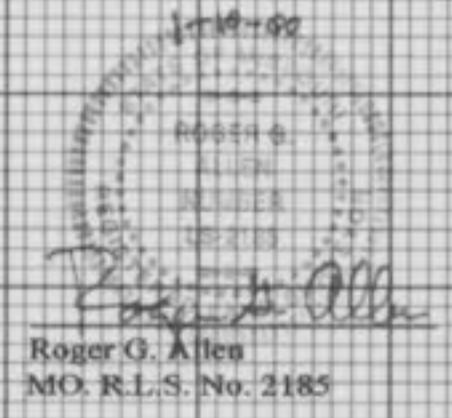
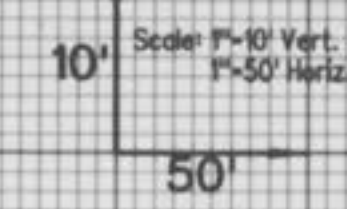


SEE BELOW FOR SEWER CONTINUATION

SEE BELOW FOR SEWER CONTINUATION

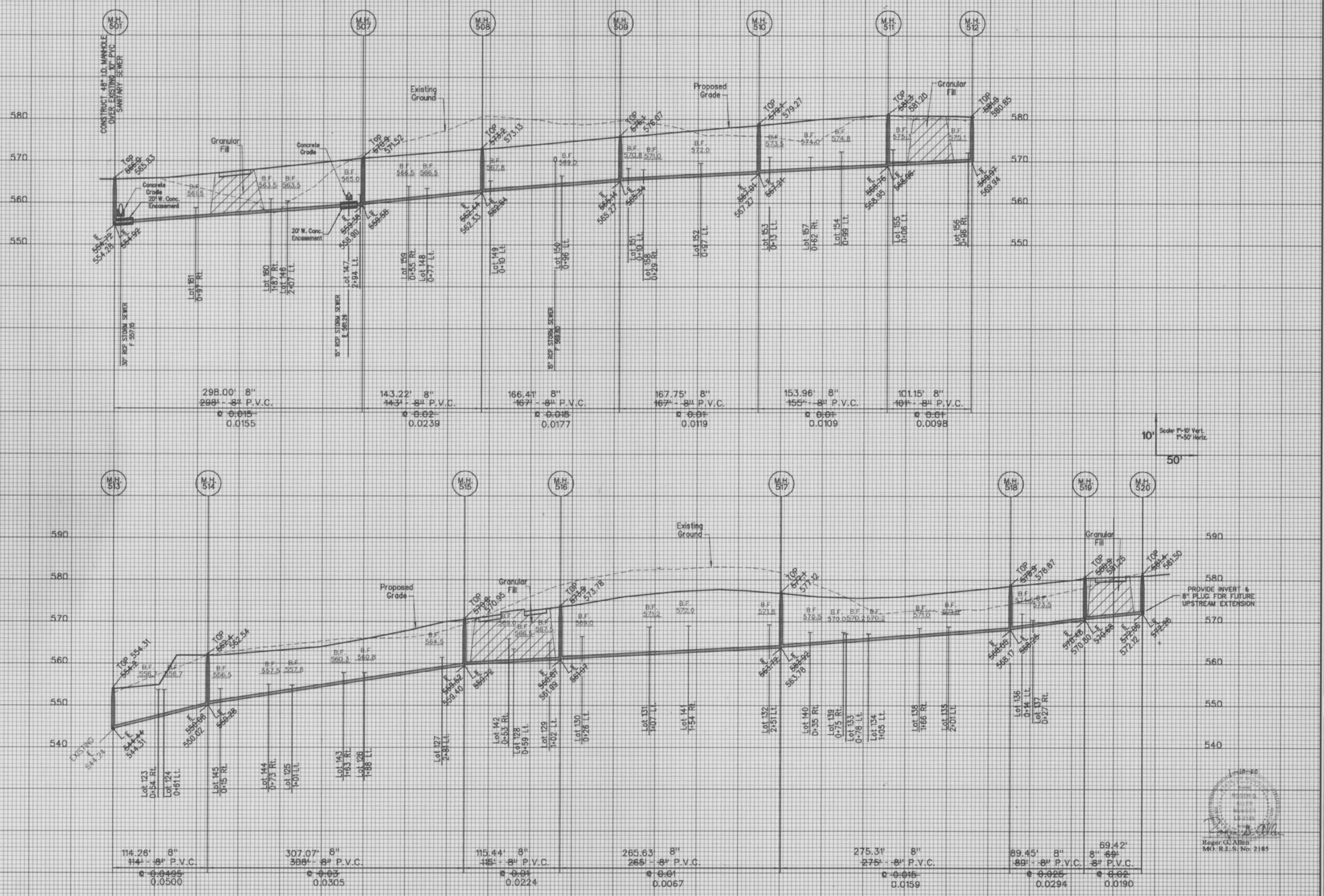
WINGHAVEN™

TIMBER MEADOWS VILLAGE



SEWER AS-BUILTS

SANITARY SEWER PROFILES
Design By: R.L.M.
Drawn By: G.A.S.
Checked By: E.A.K.
5500
9-12-99
10



10' Scale: 1"=10' Vert.
1"=50' Horiz.



WINGHAVEN
RESIDENTIAL L.L.C.
*1 MCBRIDE & SON
CORPORATE CENTER DRIVE
ST. LOUIS, MISSOURI 63005
PHONE (314) 537-2000

VOLZ

WINGHAVEN™
TIMBER MEADOWS VILLAGE

SANITARY SEWER PROFILES

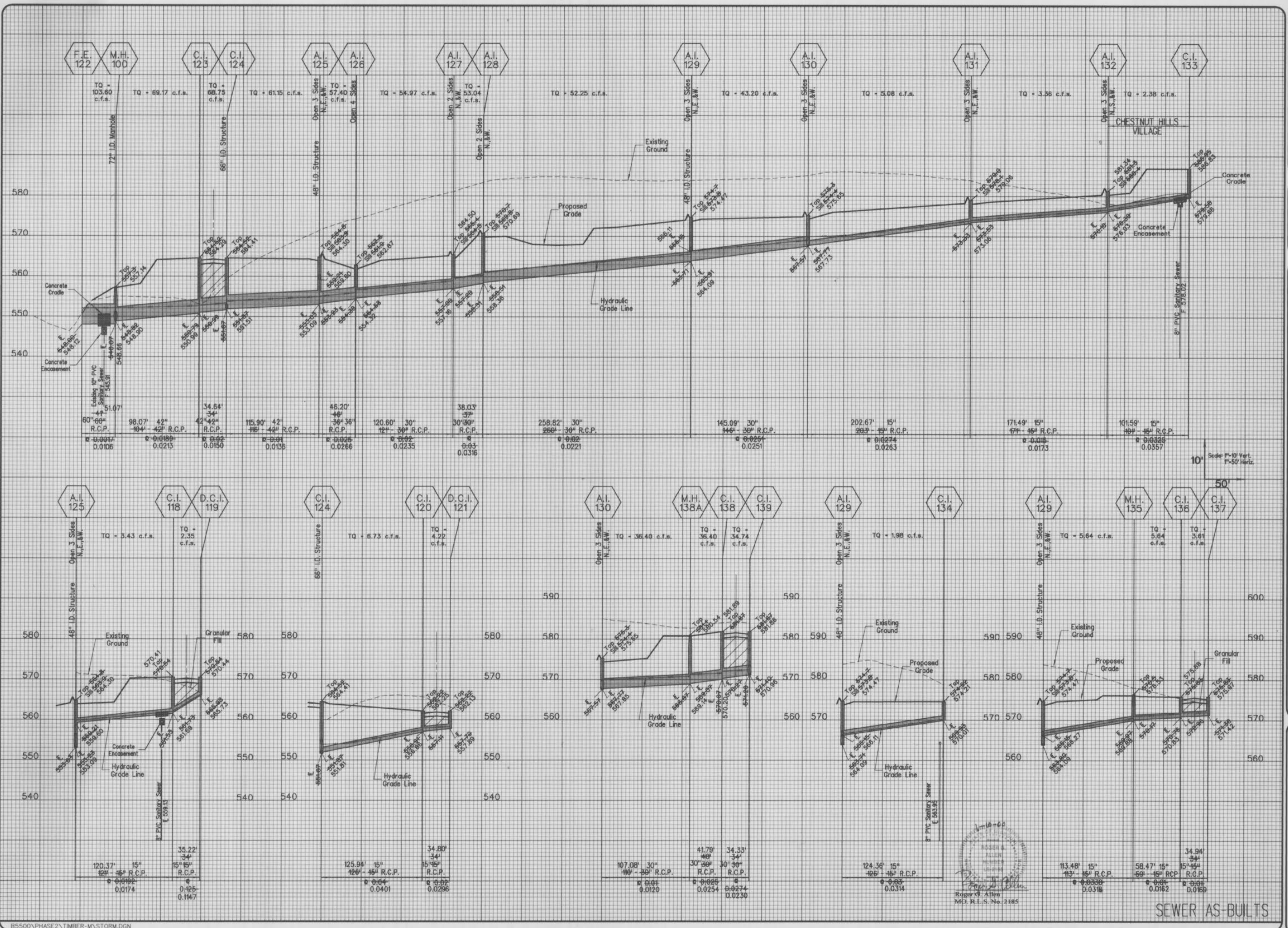
Design By: R.L.M.
Drawn By: G.A.S.
Checked By: E.A.K.

5500

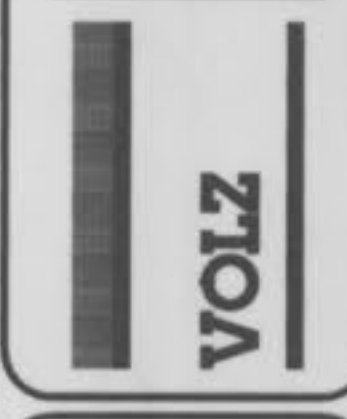
3-102-99

11

SEWER AS-BUILTS



WINGHAVEN
RESIDENTIAL L.L.C.
*1MCBRIDE & SON
CORPORATE CENTER DRIVE
ST LOUIS, MISSOURI 63005
PHONE (314) 537-2000



WINGHAVEN™

TIMBER MEADOWS VILLAGE

Scale: 1"=10' Vert.
1"=50' Horiz.

50

STORM SEWER PROFILES

Design By: G.A.S.
Drawn By: G.A.S.
Checked By: E.A.K.

5500

R-105-99
13

SEWER AS-BUILTS

