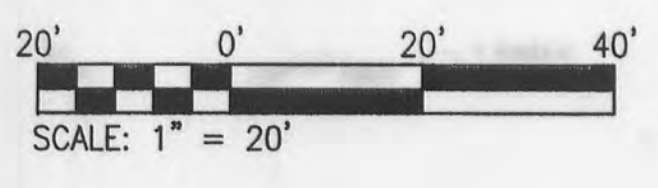
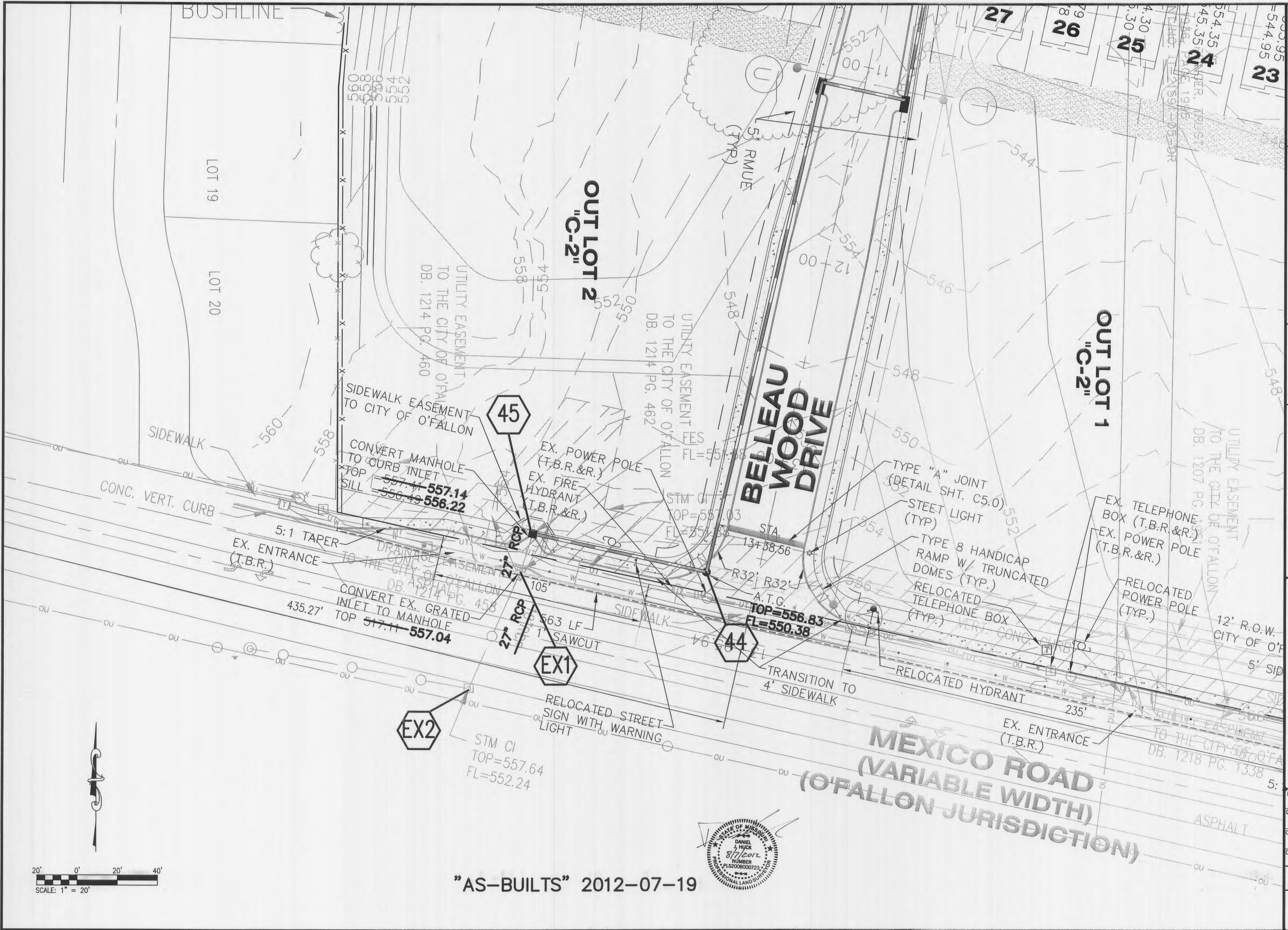


USER: mmodick TAB: E1.0
 DATE: Aug 03, 2012 - 11:28am
 DRAWING: T:\Jobs\2012\05-303\Draw\Improvement Plans Phase I\AsBuilt_0-ENTRANCE STORM PLANS.dwg



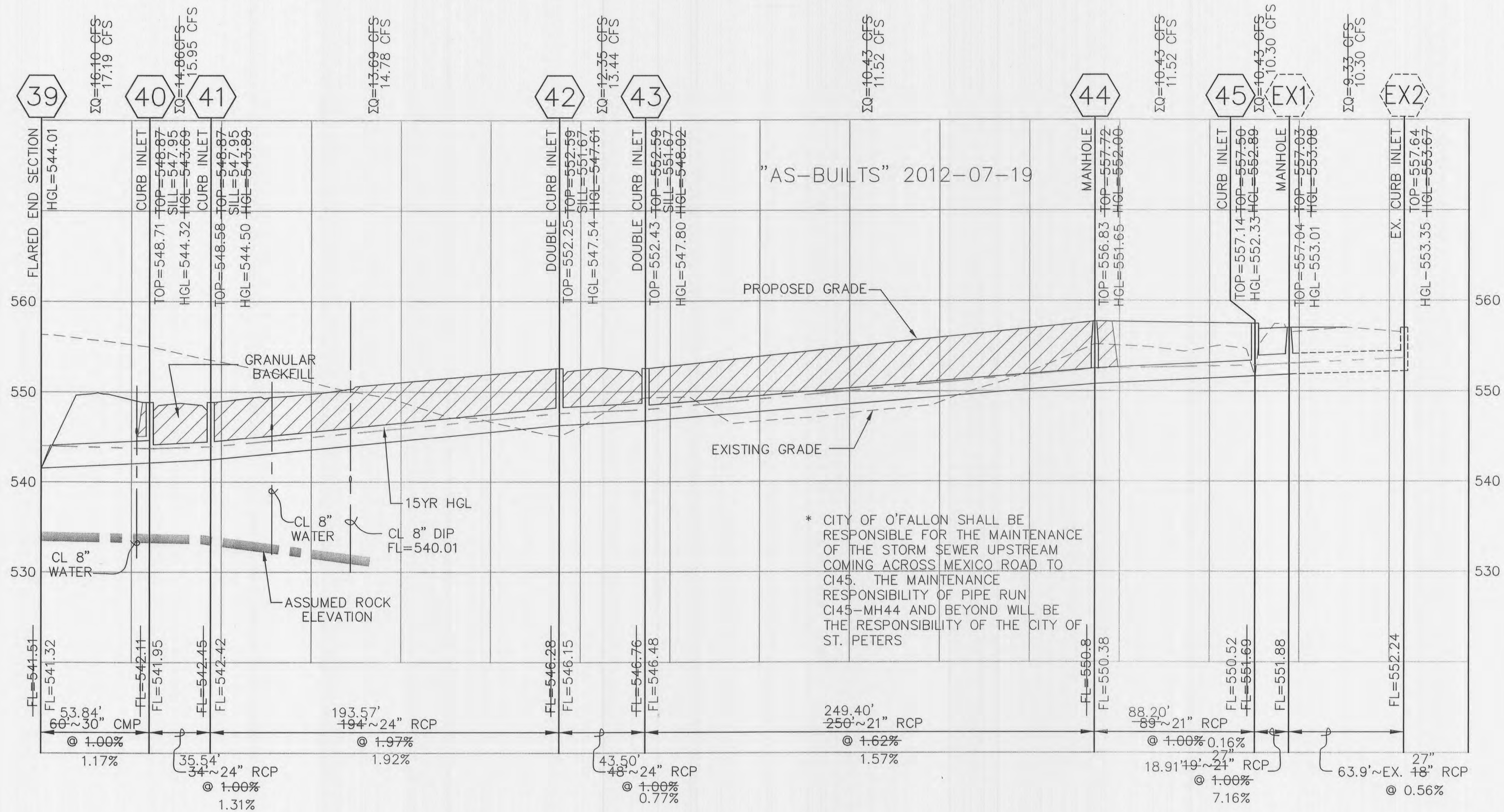
"AS-BUILTS" 2012-07-19



| REVISIONS | |
|-----------|----------------------------------|
| DATE | DESCRIPTION |
| 7/29/07 | 1. CITY COMMENTS |
| 8/7/07 | 2. CITY COMMENTS |
| 9/17/07 | 3. CITY COMMENTS |
| 10/7/07 | 4. CITY COMMENTS |
| 11/7/07 | 5. CITY COMMENTS |
| 12/14/07 | 6. CITY COMMENTS ON PUMP STATION |

| | |
|------------------|---|
| DEVELOPER/OWNER: | MANLIN HOMES 2154 BLUESTONE DRIVE ST. CHARLES, MO 63303 314-265-0877 |
| SEAL: | |
| PROJECT: | THE TOWNES AT BELLEAU CREEK - PHASE I IMPROVEMENT PLANS BELLEAU CREEK AND MEXICO ROAD ST. PETERS, MO |
| CONTRACT: | STORM SEWER AS-BUILT |
| DESIGNED BY: | MRK/KDK |
| DRAWN BY: | KDK |
| CHECKED BY: | JFH |
| DATE: | 7/19/07 |
| Job Number: | 05-303 |
| Sheet Number: | E1.0 |

USER: mmodick; PLS: E2.0
 DATE: 08/07/2012 11:27am
 DRAWING: T:\Jobs\Jobs2005\05-303\CO5-303\img\Improvement Plans Phase I\AsBuilt_0_ENTRANCE STORM PLAN.dwg



"AS-BUILTS" 2012-07-19



"AS-BUILTS" 2012-07-19

* CITY OF O'FALLON SHALL BE RESPONSIBLE FOR THE MAINTENANCE OF THE STORM SEWER UPSTREAM COMING ACROSS MEXICO ROAD TO C145. THE MAINTENANCE RESPONSIBILITY OF PIPE RUN C145-MH44 AND BEYOND WILL BE THE RESPONSIBILITY OF THE CITY OF ST. PETERS

| DATE | DESCRIPTION |
|----------|-------------------------------|
| 7/19/07 | DESIGN |
| 8/29/07 | CITY COMMENTS |
| 10/11/07 | CITY COMMENTS |
| 10/29/07 | CITY COMMENTS |
| 11/29/07 | CITY COMMENTS ON PUMP STATION |
| 12/14/07 | CITY COMMENTS ON PUMP STATION |

DEVELOPER/OWNER:
 MANLIN HOMES
 2154 BLUESTONE DRIVE
 ST. CHARLES, MO 63303
 314-265-0877

THE PROFESSIONAL ENGINEER'S SIGNATURE AND PERSONAL SEAL APPEAR HEREON ASSUMES RESPONSIBILITY ONLY FOR WHAT APPEARS ON THIS PAGE, AND DISCLAIMS RESPONSIBILITY FOR ANY OTHER INFORMATION, SPECIFICATIONS, ESTIMATES, REPORTS, OR OTHER DOCUMENTS OR INSTRUMENTS NOT SEALED BY THE UNDERSIGNED PROFESSIONAL ENGINEER. THIS SEAL IS TO BE USED FOR ANY PART OF THIS PROJECT TO WHICH THIS SEAL APPLIES.

SEAL:
THE TOWNES AT BELLEAU CREEK - PHASE I
 IMPROVEMENT PLANS
 BELLEAU CREEK AND MEXICO ROAD
 ST. PETERS, MO
STORM SEWER AS-BUILT

planning • engineering • surveying • landscape architecture
Cole and Associates Incorporated
 10777 sunset office dr.
 saint louis, missouri 63127
 p. 314 984 9887 f. 314 984 0587

DESIGNED BY: MRK/KDK
 DRAWN BY: KDK
 CHECKED BY: JFH
 DATE: 7/19/07
 Job Number: 05-303
 Sheet Number: E2.0

