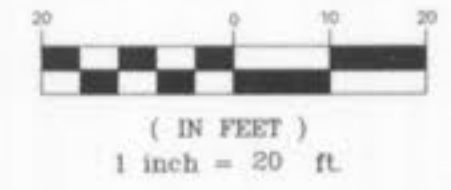


AS-BUILT SURVEY OF LAKE B OF VILLAS AT DAMES PARK

AUTUMN RIDGE DRIVE



GRAPHIC SCALE



LEGEND

- AS-BUILT CONTOUR
- PROPOSED CONTOUR
- x 446.92 AS-BUILT SPOT ELEVATION



LAKE "B"
NORMAL WATER LEVEL
ELEV. = 460.00
25 YR. H.W. = 461.27
NORMAL WATER LEVEL
ELEV. = 459.78

PARK RIDGE DRIVE

DAMES PARK DRIVE

PREPARED FOR:
ST. CHARLES COUNTY INVESTMENT GROUP, L.L.C.
841 DUNBARTON DRIVE
WELDON SPRING, MO 63304

DISCLAIMER OF RESPONSIBILITY
I hereby certify that the documents intended to be authorized by my seal are limited to this sheet, and I hereby disclaim any responsibility for all other Drawings, Specifications, Exhibits, Reports or other documents or instruments relating to or intended to be used for any part or parts of the architecture or engineering project or work.

DH/ML
Bax Engineering Company, Inc.
All Rights Reserved

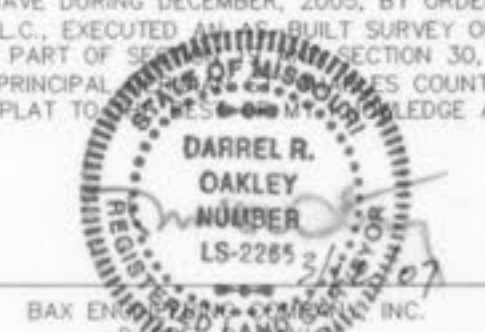
REVISIONS

**ENGINEERING
PLANNING
SURVEYING**

1052 South Cloverleaf Drive
St. Peters, MO. 63376-6445
636-928-5552
FAX 928-1718

12-07-05
DATE
98-9946-1
PROJECT NUMBER
1 of 1
SHEET OF
9946BASINASB
FILE NAME
BCC
DRAWN CHECKED
DH/ML 12-05
SURVEY BY DATE

THIS IS TO CERTIFY THAT WE HAVE DURING DECEMBER, 2005, BY ORDER OF ST. CHARLES COUNTY INVESTMENT GROUP, L.L.C., EXECUTED AN AS-BUILT SURVEY ON "LAKE B OF THE VILLAS AT DAMES PARK, BEING PART OF SECTION 30, TOWNSHIP 47 NORTH, RANGE 3 EAST, OF THE FIFTH PRINCIPAL MERIDIAN, ST. CHARLES COUNTY, MISSOURI" AND THE RESULTS ARE SHOWN ON THIS PLAT TO THE BEST OF OUR KNOWLEDGE AND BELIEF.



BAX ENGINEERING COMPANY, INC.
DARREL R. OAKLEY
SURVEYOR #2265

Villas at Dames Park Lake B
As built 1/1