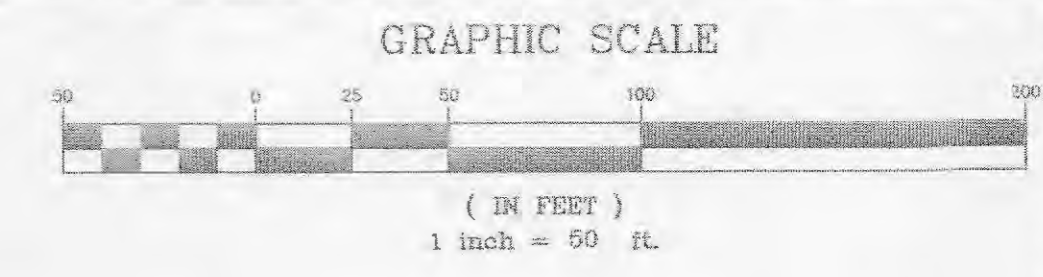
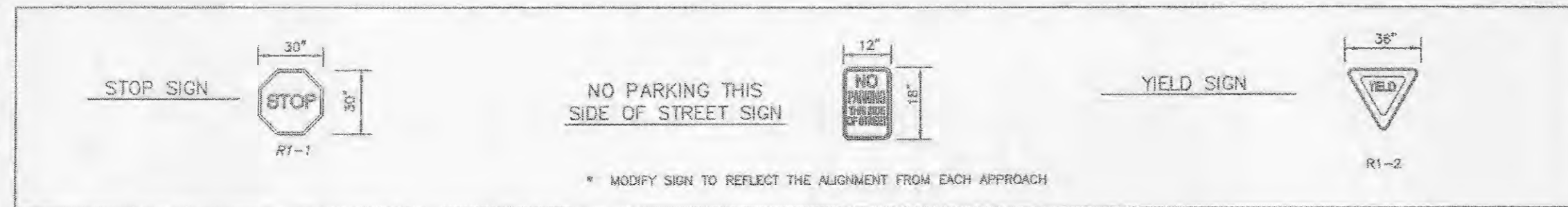
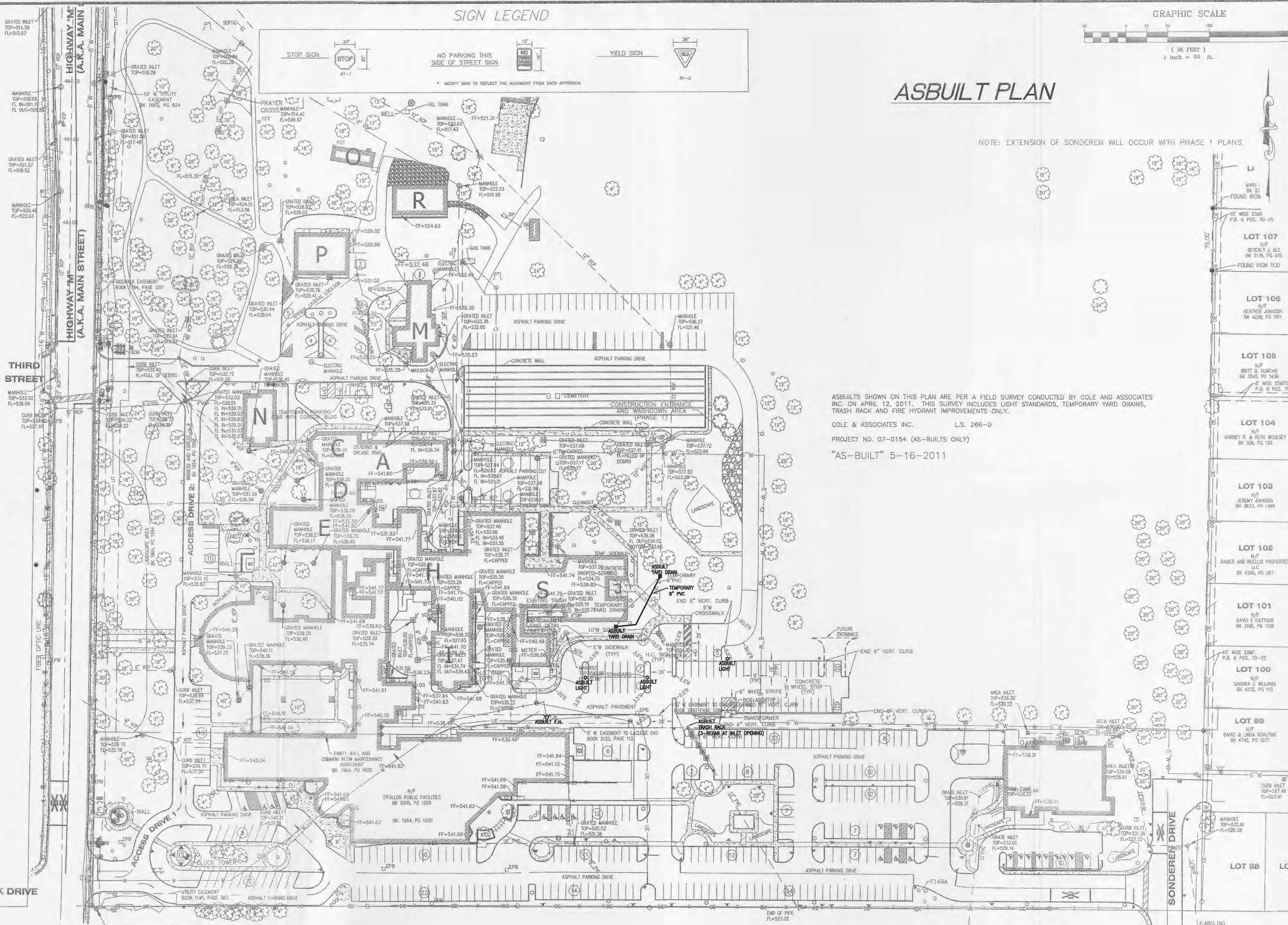


SIGN LEGEND



ASBUILT PLAN

NOTE: EXTENSION OF SONDEREN WILL OCCUR WITH PHASE 1 PLANS.



ASBUILTS SHOWN ON THIS PLAN ARE PER A FIELD SURVEY CONDUCTED BY COLE AND ASSOCIATES INC. ON APRIL 12, 2011. THIS SURVEY INCLUDES LIGHT STANDARDS, TEMPORARY YARD DRAINS, TRASH RACK AND FIRE HYDRANT IMPROVEMENTS ONLY.

COLE & ASSOCIATES INC. L.S. 266-D

PROJECT NO. 07-0154 (AS-BUILTS ONLY)

"AS-BUILT" 5-16-2011

Table of lot information including Lot 99, 100, 101, 102, 103, 104, 105, 106, 107 with owner names and addresses.

Professional stamps and title block for Mike E. VonDerheide, Engineer, and Cole and Associates Incorporated, including project details and date.

Vertical text on the left margin: USER: Mike VonDerheide TAB: C41 DATE: September 1, 2011 7:44:40 AM DRAWING: S:\068\07-07-0154\03-DWG\AS-BUILT\PLAN_04.0 SITE PLAN_AS-BUILT.dwg

STA. F149A SITE BENCHMARK

NORFOLK & WESTERN RAILROAD

PLANNING AND DEVELOPMENT DEPARTMENT FILE #0708.04 Job Number 07-0154 Sheet Number C41