

**AS-BUILT PLAN NOTE:**  
EASEMENTS SHOWN HEREON FOR PLAT 6 ARE BASED ON ITS RECORD PLAT - SEE BK. PL 50, P. 280

**AS-BUILT IMPROVEMENT LOCATIONS**

The existing sewers length, sizes, flowlines, depths of structures and sewers along with their locations with respect to existing or proposed easements have been located and/or measured. The surveyor has located above-ground features, but did not locate any underground facilities. The results of those measurements are shown on this set of Final Measurement Plans. Since underground information has been plotted from information provided by other sources, I disclaim any responsibility for that specific information.

All public utilities are located within the designated existing or proposed easements except as shown herein.

**THE STERLING COMPANY**  
By: *Glenn S. Mazuranic*  
Glenn S. Mazuranic  
Mo. Reg. P.L.S. - #2610

**AS BUILT**

3/29/2013

GRAPHIC SCALE  
1 inch = 100 ft.

**AS-BUILT BMP ONLY**

ISSUE	DATE	REMARKS
3-3-2016	Initial Submittal	
5-7-2015	City Comments	
6-26-2015	City & PWSO #1 Comments	
11-5-2015	City Comments	
12-10-2015	City Comments	
6-14-2016	Inspector Review	
3-28-2017	City Sewer Review	

**PROJECT TITLE**  
The Villages at  
Shady Creek  
City As-Built - Plat 6  
OFALLON, MISSOURI

**THE STERLING CO.**  
**ENGINEERS & SURVEYORS**  
5055 New Baumgartner Road  
St. Louis, Missouri 63129  
Ph 314-487-0440 Fax 314-487-8944  
www.sterling-eng-sur.com  
Corporate Certificate of Authority #001346

The Professional Engineer's seal and signature placed on this sheet applies only to the material and items shown on this sheet. All drawings, instruments or other documents prepared by this engineer, and the engineer's assistants, employees and all responsible for such drawings, instruments or documents not exhibiting this seal and signature.

© 2016 Sterling Company - Engineer's Seal

Date: 6/14/2016  
RODNEY ARNOLD  
LICENSE # PE-2002016612  
Civil Engineer

*Lombardo Homes of St. Louis, LLC*  
2299 Technology Drive, Suite 150  
OFallon, Missouri 63368  
Ph. (636) 265-2710  
Fax (636) 695-3195  
www.lombardohomesstlou.com

**OVERALL SITE PLAN**

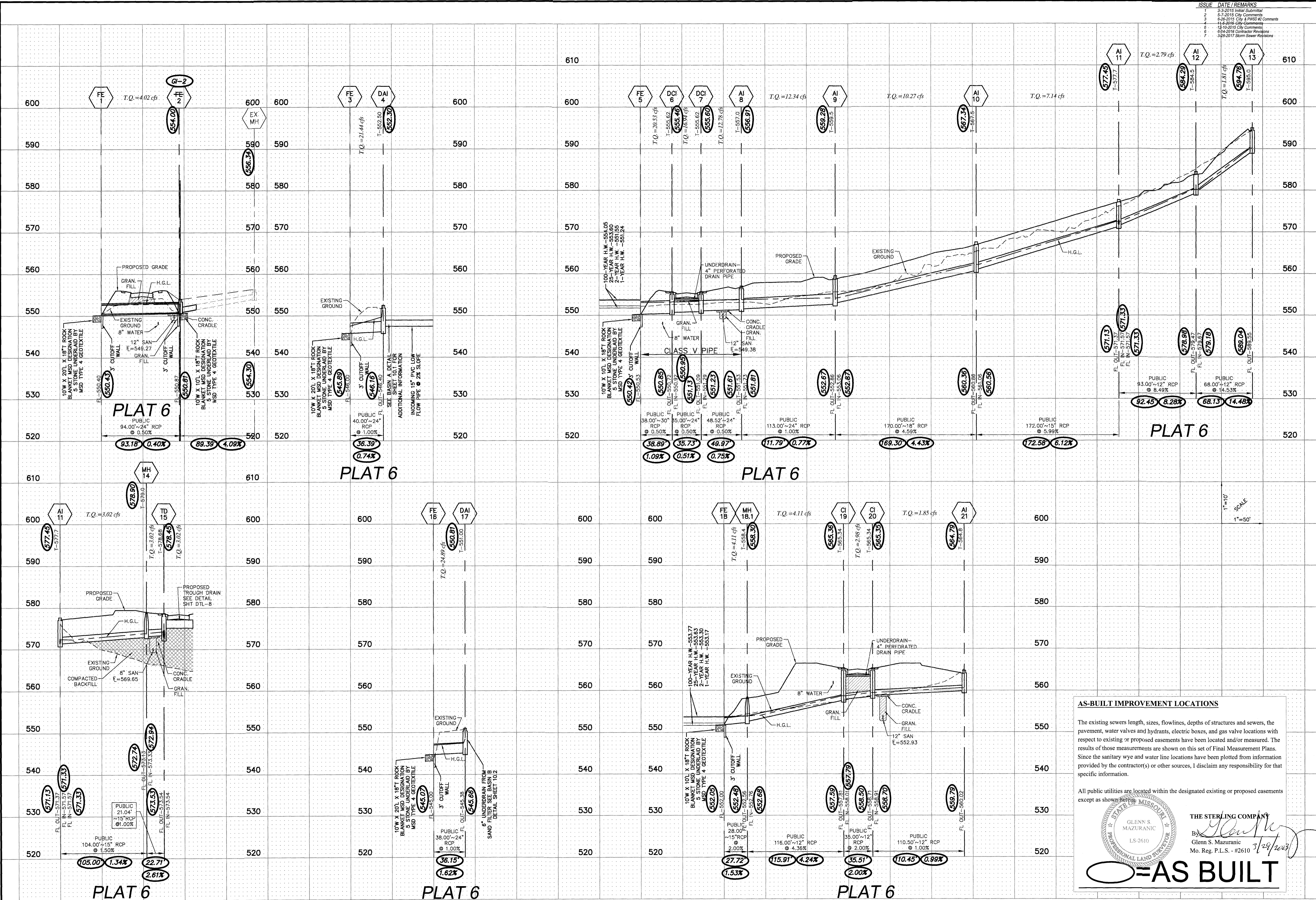
P+Z No. P&Z NO  
City No. 15-162-SP  
Date: 6/14/2016  
Job No. 14-03-087  
Page No.

4.0

As-Built-IMP

Drawing name: V:\1402007\08171717\Drawings\Storm\Profiles\City of Fallon - REV STORM Profiles.dwg Plotted on: Mar 08, 2025 - 3:38pm Plotted by: mslimpson

ISSUE	DATE	REMARKS
1	3-3-2015	Initial Submittal
2	5-7-2015	City Comments
3	6-28-2015	City & PWS&B Comments
4	11-6-2016	City Comments
5	12-10-2016	City Comments
6	5-14-2018	Contractor Revisions
7	3-29-2017	Storm Sewer Revisions



**PROJECT TITLE**  
**The Villages at**  
**Shady Creek**  
**City As-Builts - Plat 6**

**THE STERLING CO.**  
**ENGINEERS & SURVEYORS**  
 5055 New Baumgartner Road  
 St. Louis, Missouri 63129  
 Ph. 314-487-0440 Fax 314-487-8944  
 www.sterling-eng-survey.com  
 Corporate Certificate of Authority #001348  
 OFF FALLON, MISSOURI

The Professional Engineer's seal and signature affixed to this sheet indicate only the engineer and firm shown on this sheet. All drawings, instruments or other documents not executed by the seal and signature shall not be considered approved by the seal and signature of the engineer or firm shown on this sheet. The Professional Engineer's seal and signature are not a warranty or endorsement of any products or services shown on this sheet. The Professional Engineer's seal and signature are not a warranty or endorsement of any products or services shown on this sheet.

Date: 6/21/2017  
 RODNEY ARNOLD  
 LICENSE # PE-2002016612  
 Civil Engineer

**Lombardo Homes of St. Louis, LLC**  
 2299 Technology Drive, Suite 150  
 Ofallon, Missouri 63368  
 Ph. (636) 265-2710  
 Fax (636) 695-3195  
 www.lombardohomesofstlouis.com

P+Z No. P&Z NO  
 City No. 15-162-SP  
 Date: 3/19/2019  
 Job No. 14-03-087

Page No.  
**8.1**  
 As-Built - IMP

**AS-BUILT IMPROVEMENT LOCATIONS**

The existing sewers length, sizes, flowlines, depths of structures and sewers, the pavement, water valves and hydrants, electric boxes, and gas valve locations with respect to existing or proposed easements have been located and/or measured. The results of those measurements are shown on this set of Final Measurement Plans. Since the sanitary wye and water line locations have been plotted from information provided by the contractor(s) or other sources, I disclaim any responsibility for that specific information.

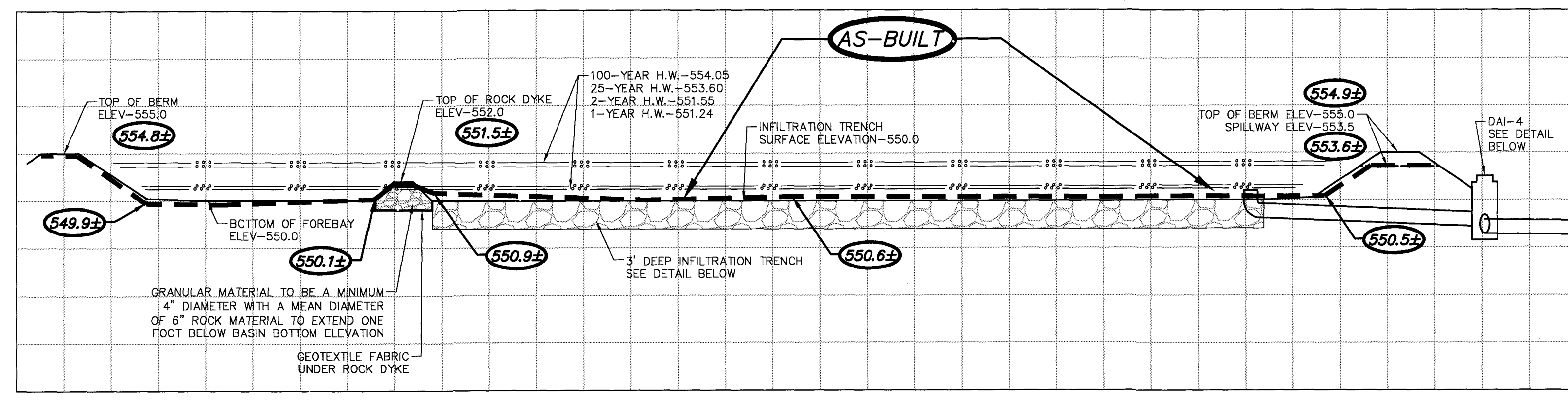
All public utilities are located within the designated existing or proposed easements except as shown herein.

**AS BUILT**

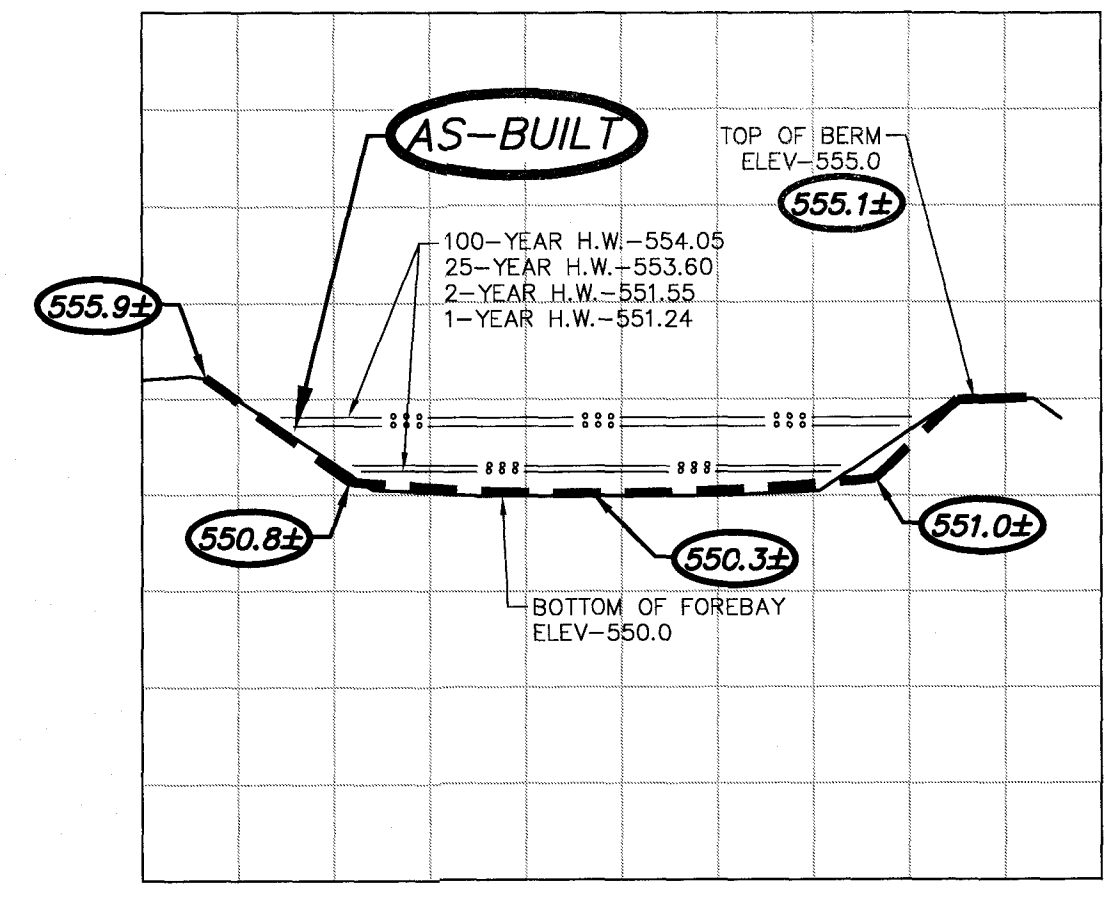
THE STERLING COMPANY  
 By: *[Signature]*  
 Glenn S. Mazuranc  
 Mo. Reg. P.L.S. #2610 3/25/2017

STATE OF MISSOURI  
 PROFESSIONAL LAND SURVEYOR  
 LICENSE # LS-2610

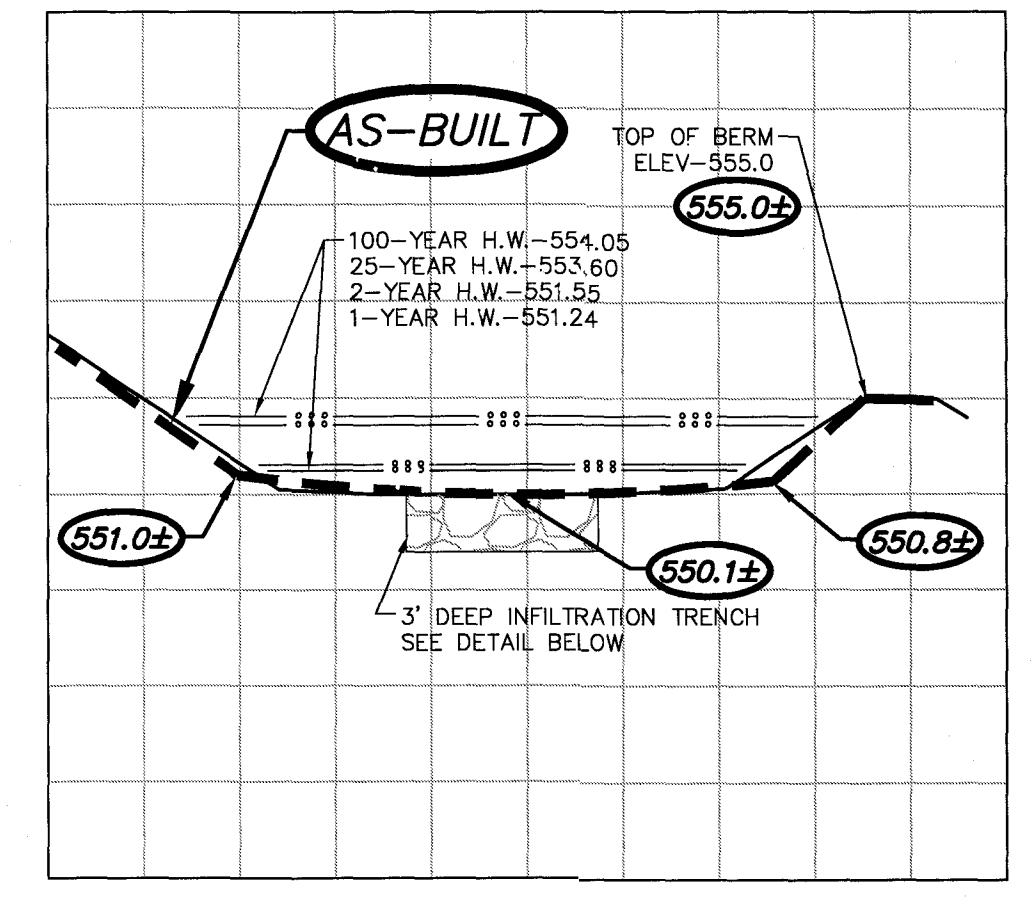
ISSUE	DATE	REMARKS
1	3-3-2015	Initial Submittal
2	5-7-2015	City Comments
3	6-26-2015	City & PWS&D Comments
4	11-8-2015	City Comments
5	12-10-2015	City Comments
6	6-14-2016	Contractor Revisions
7	3-28-2017	Storm Sewer Revisions



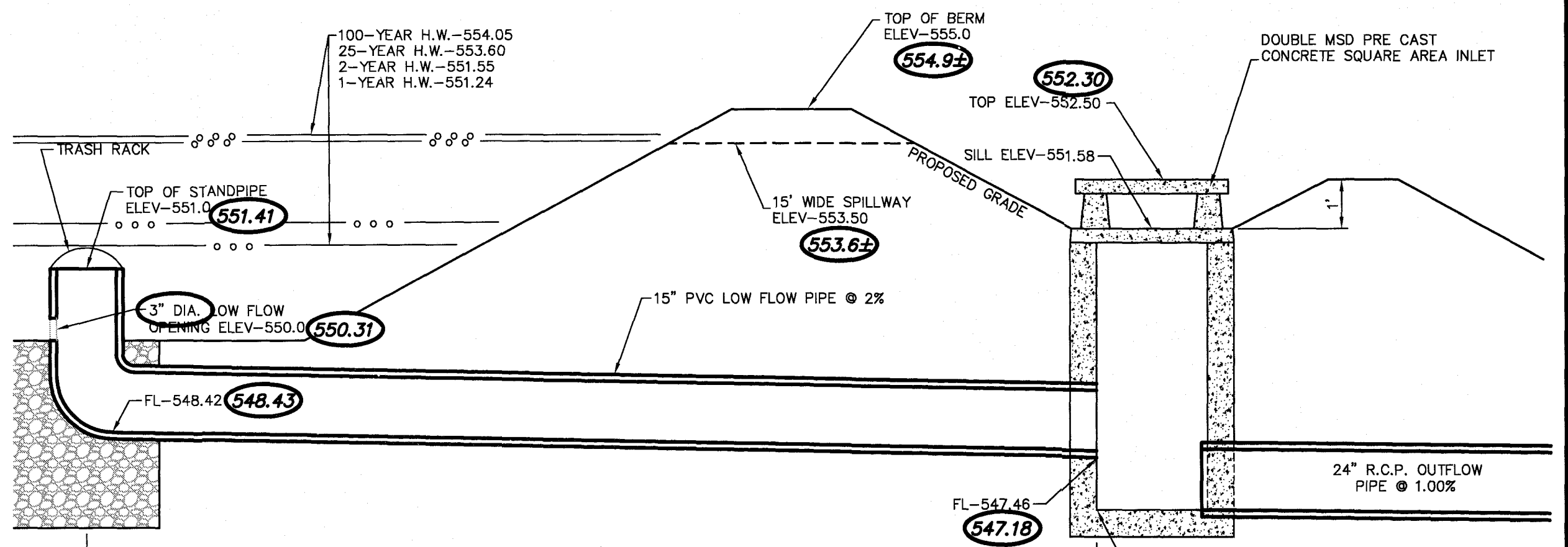
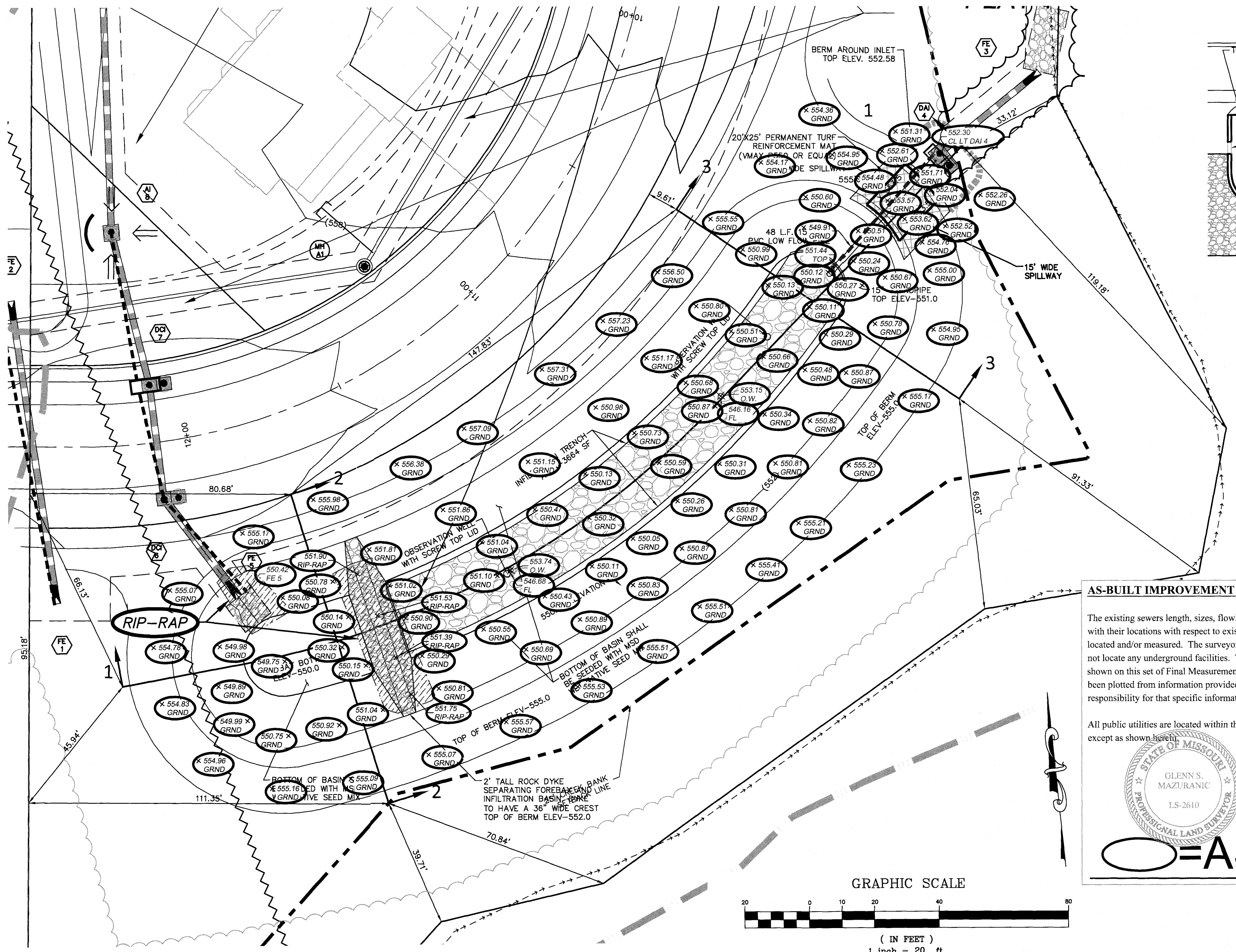
**BASIN-A SECTION 1-1**  
SCALE 1"=20' HORIZ.  
1"=10' VERT.



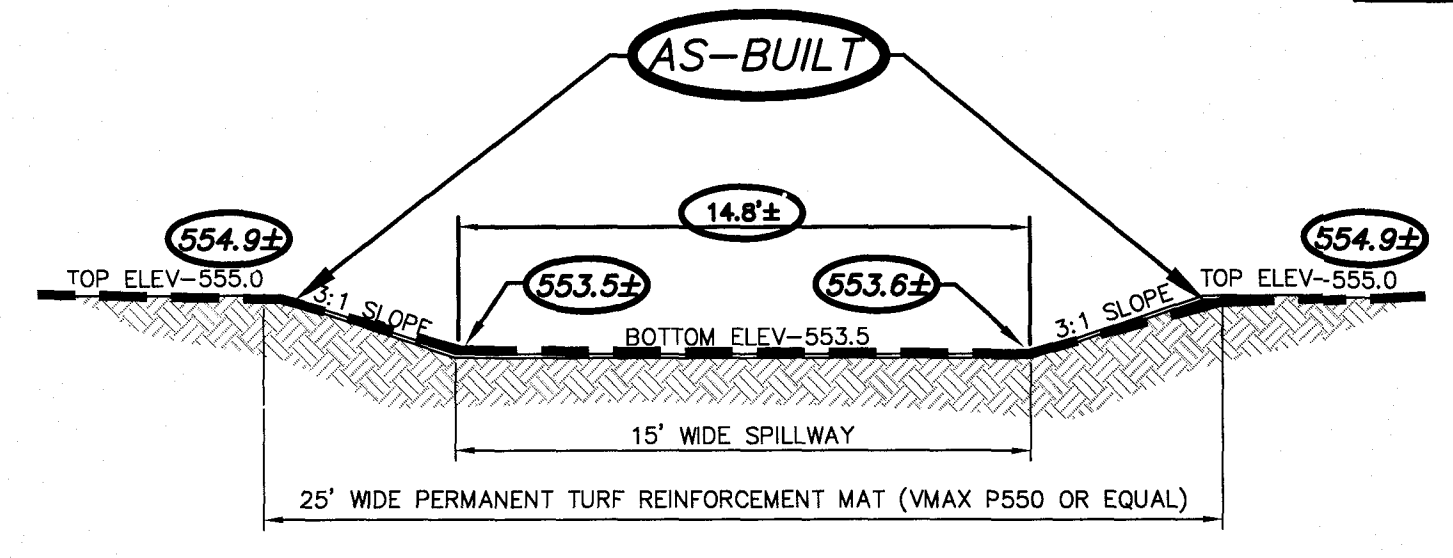
**BASIN-A SECTION 2-2**  
SCALE 1"=20' HORIZ.  
1"=10' VERT.



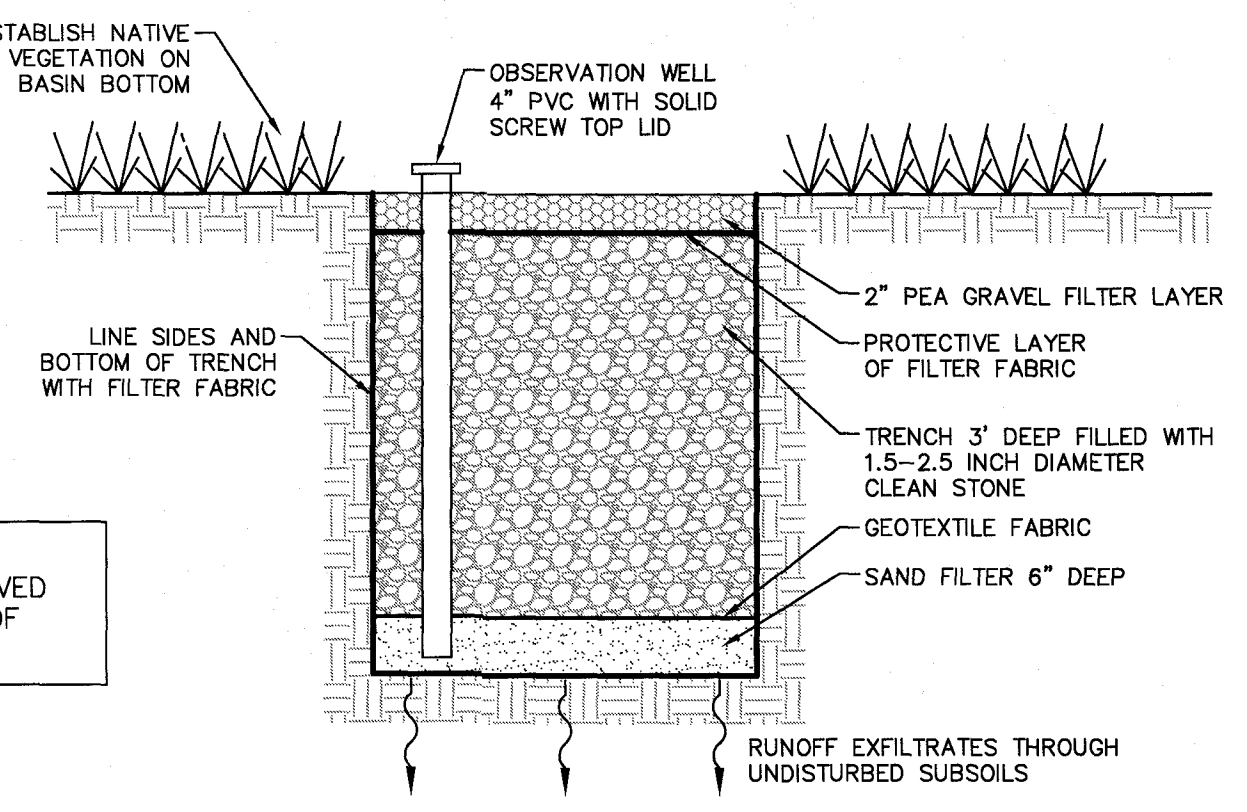
**BASIN-A SECTION 3-3**  
SCALE 1"=20' HORIZ.  
1"=10' VERT.



**DOUBLE AREA INLET 4 SIDE SECTION**  
N.T.S.



**SPILLWAY CROSS SECTION**  
N.T.S.



**INFILTRATION TRENCH DETAIL**  
N.T.S.

**AS-BUILT IMPROVEMENT LOCATIONS**

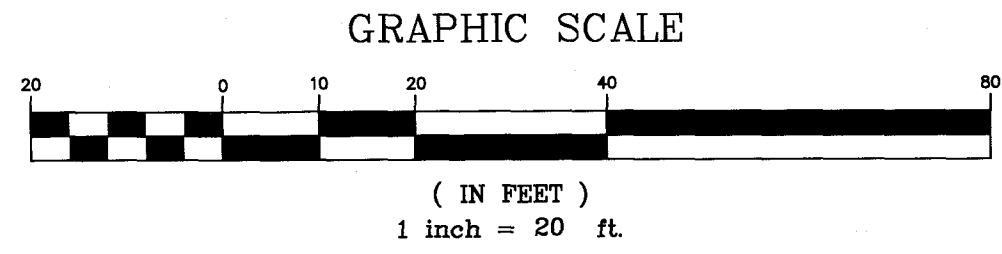
The existing sewers length, sizes, flowlines, depths of structures and sewers along with their locations with respect to existing or proposed easements have been located and/or measured. The surveyor has located above-ground features, but did not locate any underground facilities. The results of those measurements are shown on this set of Final Measurement Plans. Since underground information has been plotted from information provided by other sources, I disclaim any responsibility for that specific information.

All public utilities are located within the designated existing or proposed easements except as shown hereon.

**THE STERLING COMPANY**  
By: *Glenn S. Mazuranc*  
Glenn S. Mazuranc  
Mo. Reg. P.L.S. - #2610  
3/23/2013

**STATE OF MISSOURI**  
PROFESSIONAL LAND SURVEYOR  
I.S. 2610

**WATER QUALITY NOTE:**  
WATER QUALITY VOLUME IS ACHIEVED FOR BASIN A WITHIN THE VOIDS OF THE INFILTRATION TRENCH.



**PROJECT TITLE**  
The Villages at Shady Creek  
City As-Built - Plat 6  
OFFALLON, MISSOURI

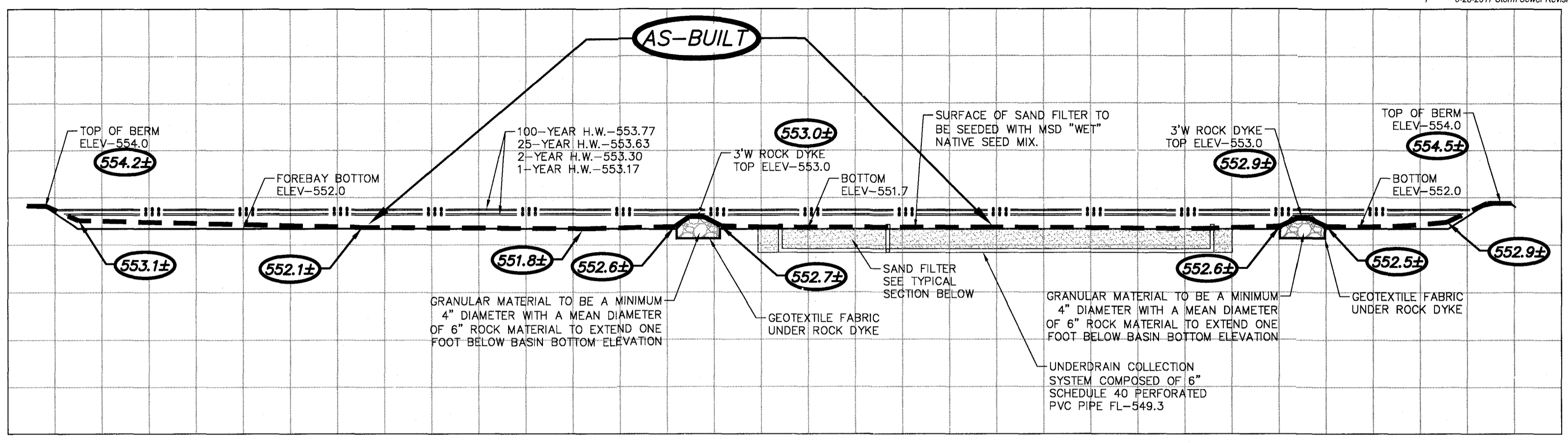
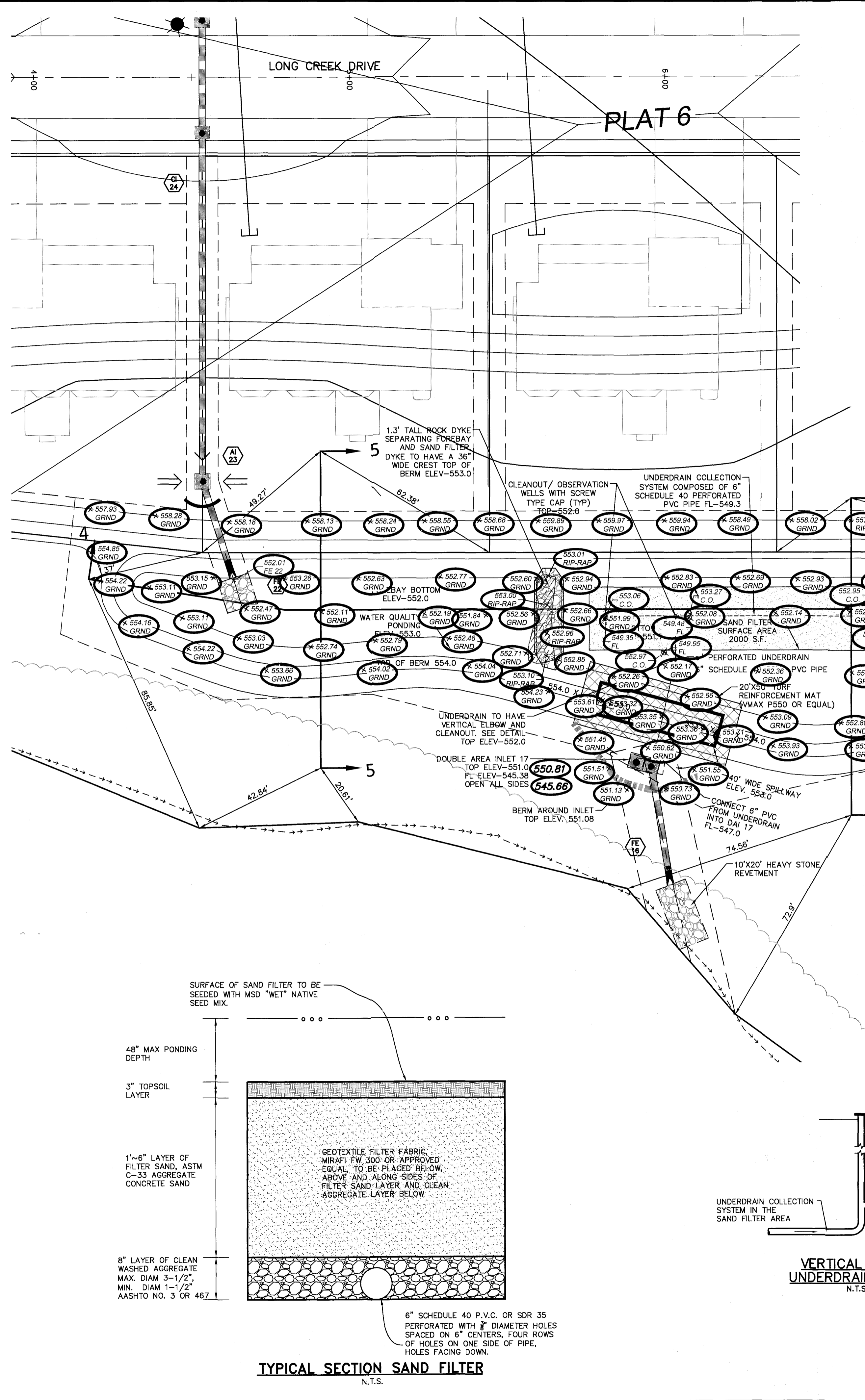
**THE STERLING CO.**  
ENGINEERS & SURVEYORS  
5055 New Baumgartner Road  
St. Louis, Missouri 63129  
Ph: 314-487-0440 Fax: 314-487-8944  
www.sterling-eng-survey.com  
Corporate Certificate of Authority #001348

Date: 6/14/2016  
RODNEY ARNOLD  
LICENSE # PE-2002016612  
Civil Engineer

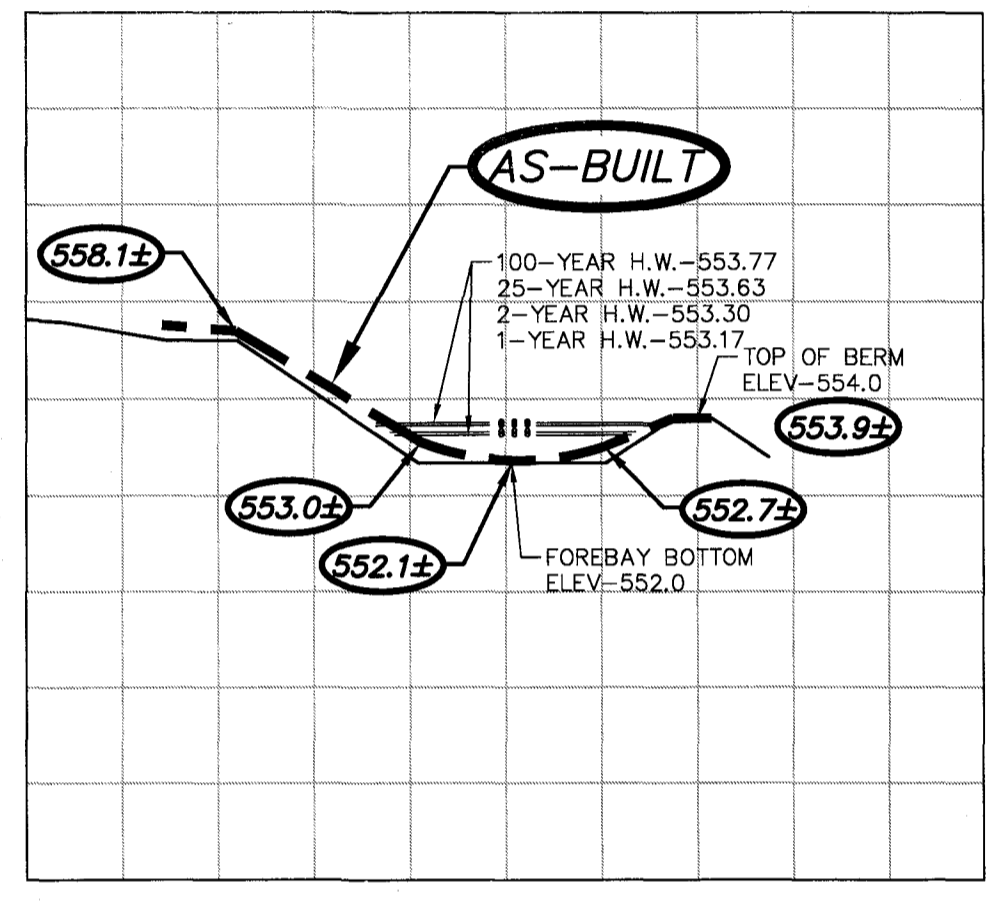
Lombardo Homes of St. Louis, LLC  
2299 Technology Drive, Suite 150  
OFallon, Missouri 63368  
Ph: (636) 265-2710  
Fax: (636) 695-3795  
www.lombardohomesstlouis.com

P+Z No. P&Z NO  
City No. 15-162-SP  
Date: 6/14/2016  
Job No. 14-03-087

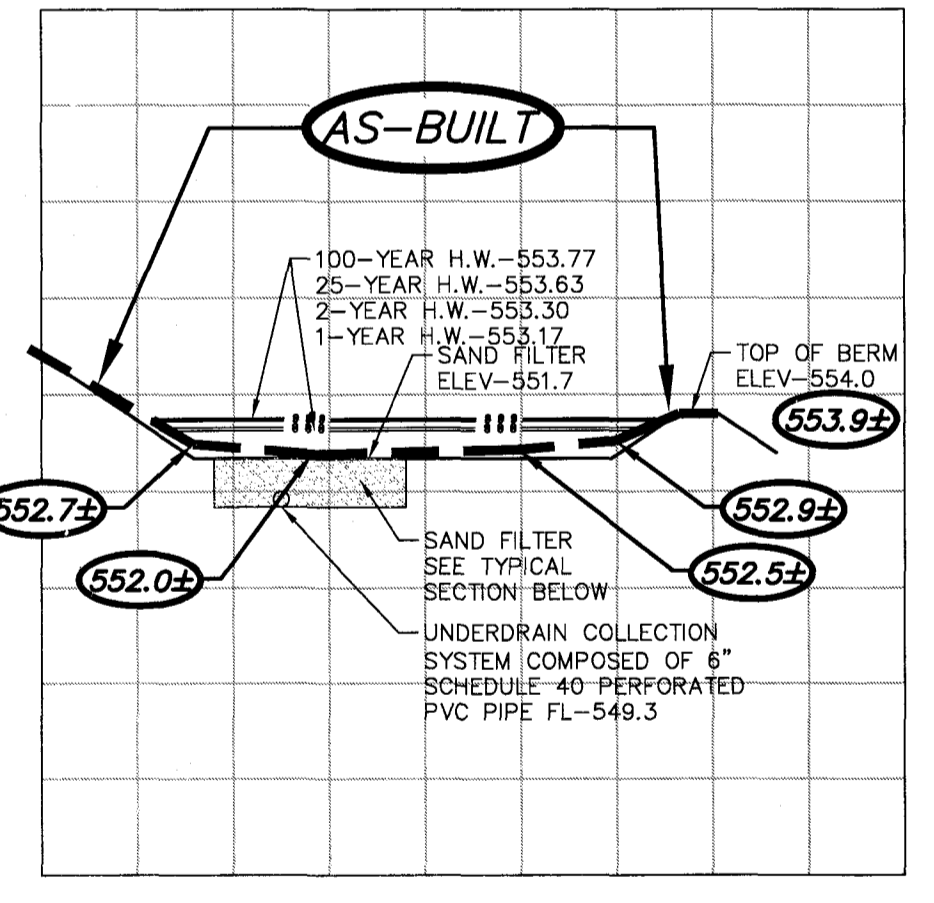
Page No.  
**10.1**  
As-Built-IMP



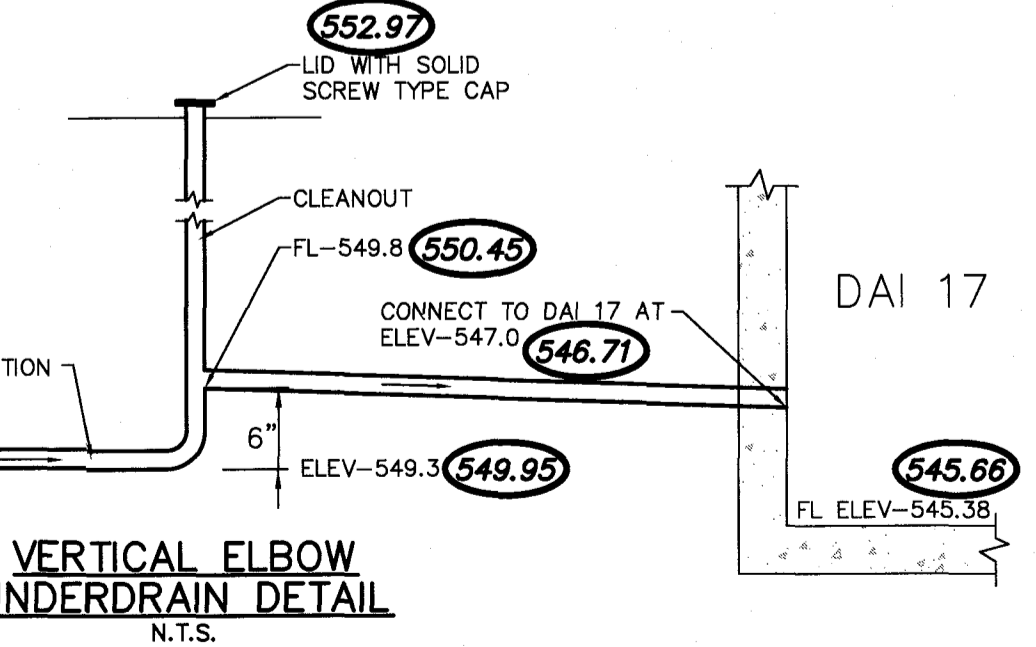
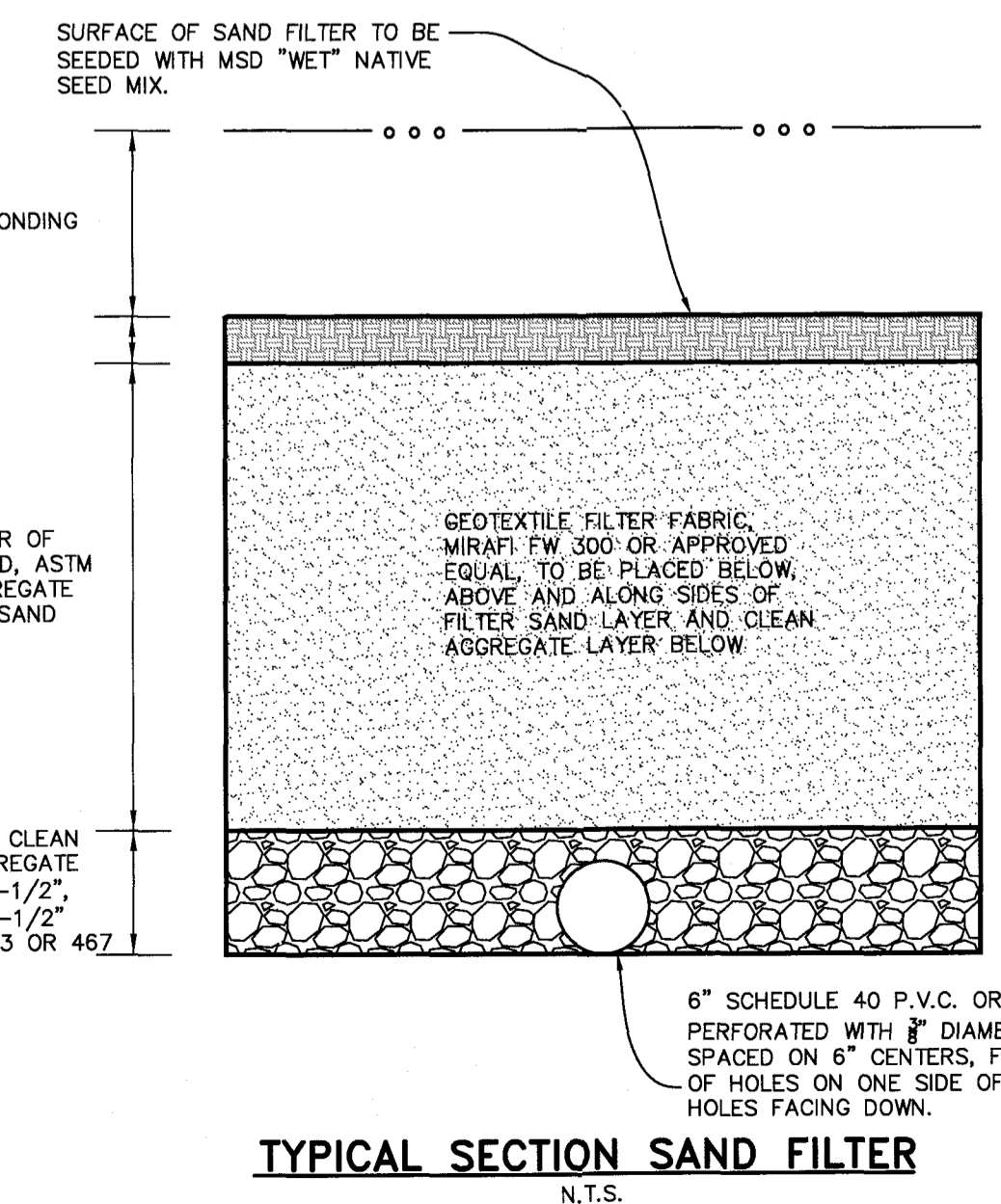
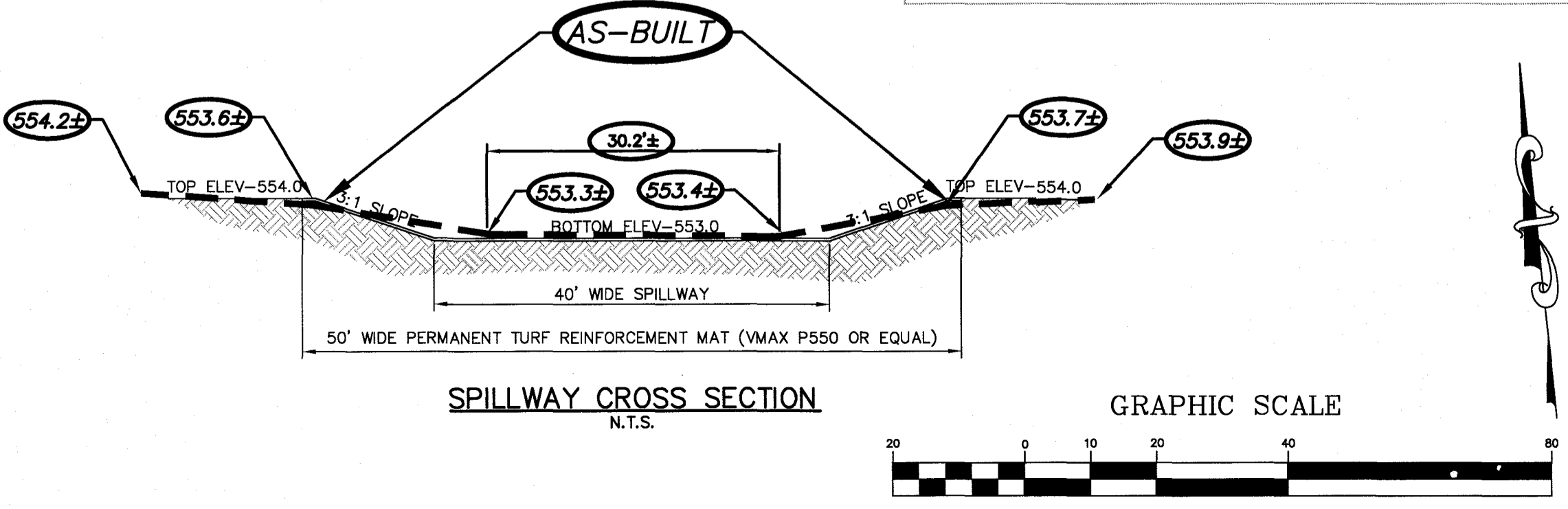
**BASIN-B SECTION 4-4**  
SCALE 1"=20' HORIZ.  
1"=10' VERT.



**BASIN-B SECTION 5-5**  
SCALE 1"=20' HORIZ.  
1"=10' VERT.



**BASIN-B SECTION 6-6**  
SCALE 1"=20' HORIZ.  
1"=10' VERT.



**AS-BUILT IMPROVEMENT LOCATIONS**

The existing sewers length, sizes, flowlines, depths of structures and sewers along with their locations with respect to existing or proposed easements have been located and/or measured. The surveyor has located above-ground features, but did not locate any underground facilities. The results of those measurements are shown on this set of Final Measurement Plans. Since underground information has been plotted from information provided by other sources, I disclaim any responsibility for that specific information.

All public utilities are located within the designated existing or proposed easements except as shown hereon.

**THE STERLING COMPANY**  
By: *Glenn S. Mazuranc*  
Glenn S. Mazuranc  
Mo. Reg. P.L.S. - #2610 3/29/23

Professional Engineer Seal: **GLENN S. MAZURANC**, No. 18-2610, State of Missouri.

**AS BUILT**

**PROJECT TITLE**  
The Villages at Shady Creek  
City As-Built - Plat 6  
OFALLON, MISSOURI

**THE STERLING CO.**  
ENGINEERS & SURVEYORS  
5055 New Baumgartner Road  
St. Louis, Missouri 63129  
Ph. 314-487-0440 Fax 314-487-4944  
www.sterling-eng-survey.com  
Corporate Certificate of Authority #001348

Date: 6/14/2016  
RODNEY ARNOLD  
LICENSE # PE-2002016612  
Civil Engineer

Lombardo Homes of St. Louis, LLC  
2299 Technology Drive, Suite 150  
OFallon, Missouri 63368  
Ph. (636) 265-2710  
Fax (636) 695-3195  
www.lombardohomesstlouislouis.com

**BASIN 'B' PLAN & DETAILS**

P+Z No. P&Z NO  
City No. 15-162-SP  
Date: 6/14/2016  
Job No. 14-03-087  
Page No. 10.2  
As-Built -#MP

( IN FEET )  
1 inch = 20 ft.  
**AS-BUILT BMP ONLY**  
"Final Plan" Approval Date: January 8, 2015 (26-14.01)