

**VOLZ**

Engineers  
Land Planners  
Land Surveyors

5933 South Highway 94, Suite 201  
St. Charles, Missouri 63304-5611  
636-939-5155

# THE VILLAGES AT WALDEN POND

## PHASE IV SEWER FINAL MEASUREMENTS

Prepared For

**WALDEN POND, L.L.C.**

2526 LEMAY FERRY RD.

ST. LOUIS MO. 63125

PHONE: (314) 868-5254

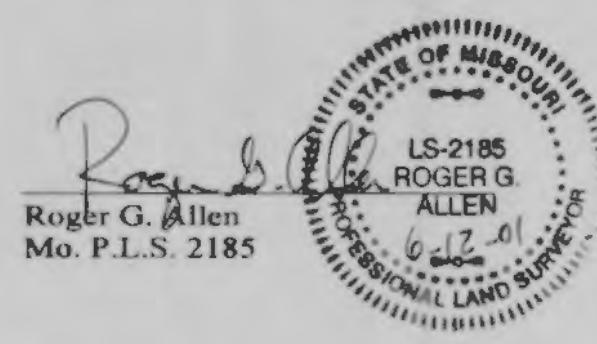
The existing sewer lengths, sizes, flowlines, depths of structures and sewers and locations with respect to existing or proposed easements have been measured. The results of those measurements are shown on this set of Final Measurement Plans. Since the wye locations have been plotted from information provided by the sewer contractor or other sources, I disclaim any responsibility for that specific information.

All public sewers are located within designated existing or proposed easements except as shown in this drawing.

The results of those measurements are shown on this drawing by lining out the planned number and indicating the measured number adjacent to the planned number. All other numbers shown have not been measured or verified.

The location of the sewers were determined by locating the manholes and traversing in a straight line between them.

No hydraulic computations have been done on the measured lines to verify or confirm the capacity, freeboard or design requirements of the sewers.



Roger G. Allen  
Mo. P.L.S. 2185

---

**VOLZ** Engineers  
Land Planners  
Land Surveyors

---

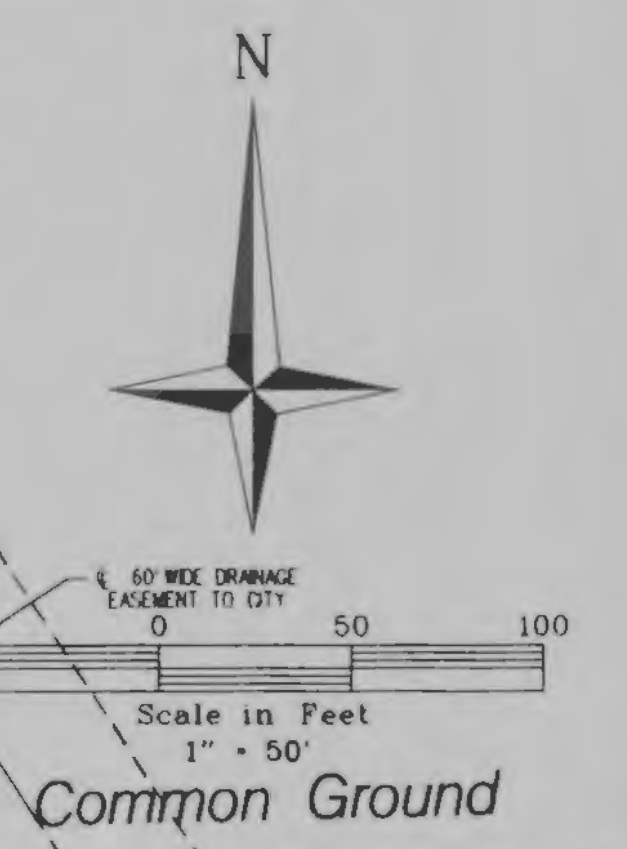
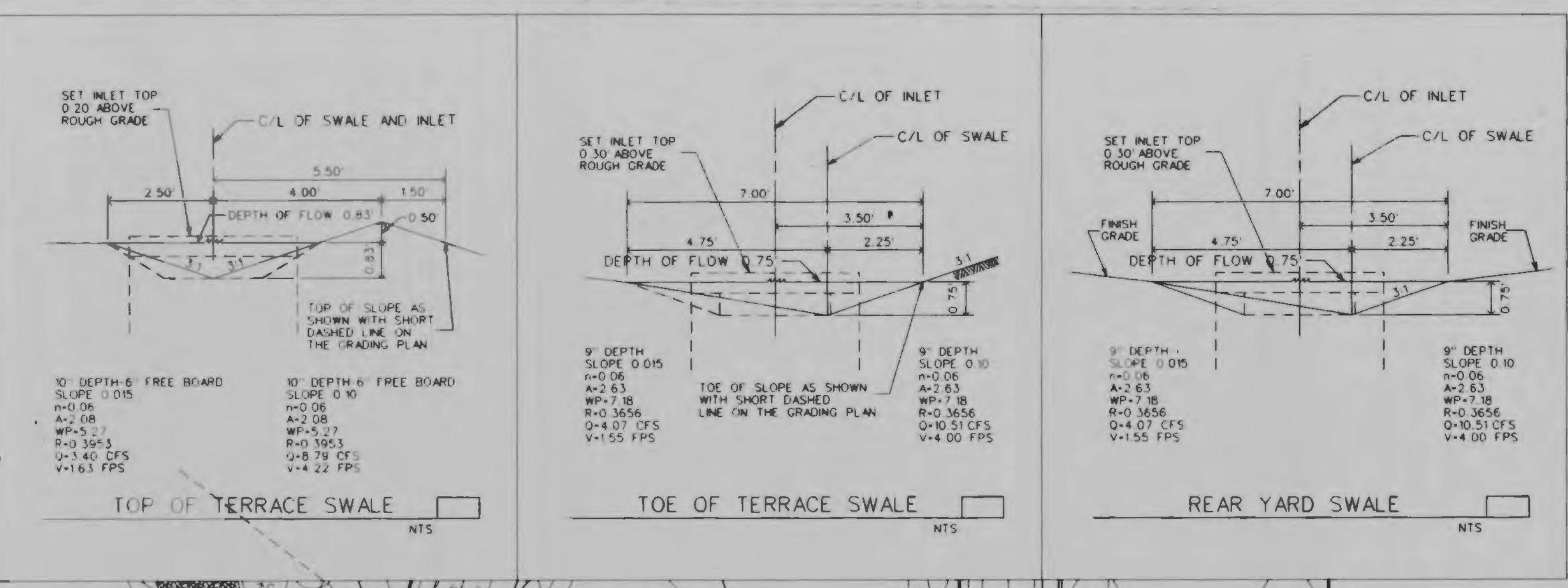
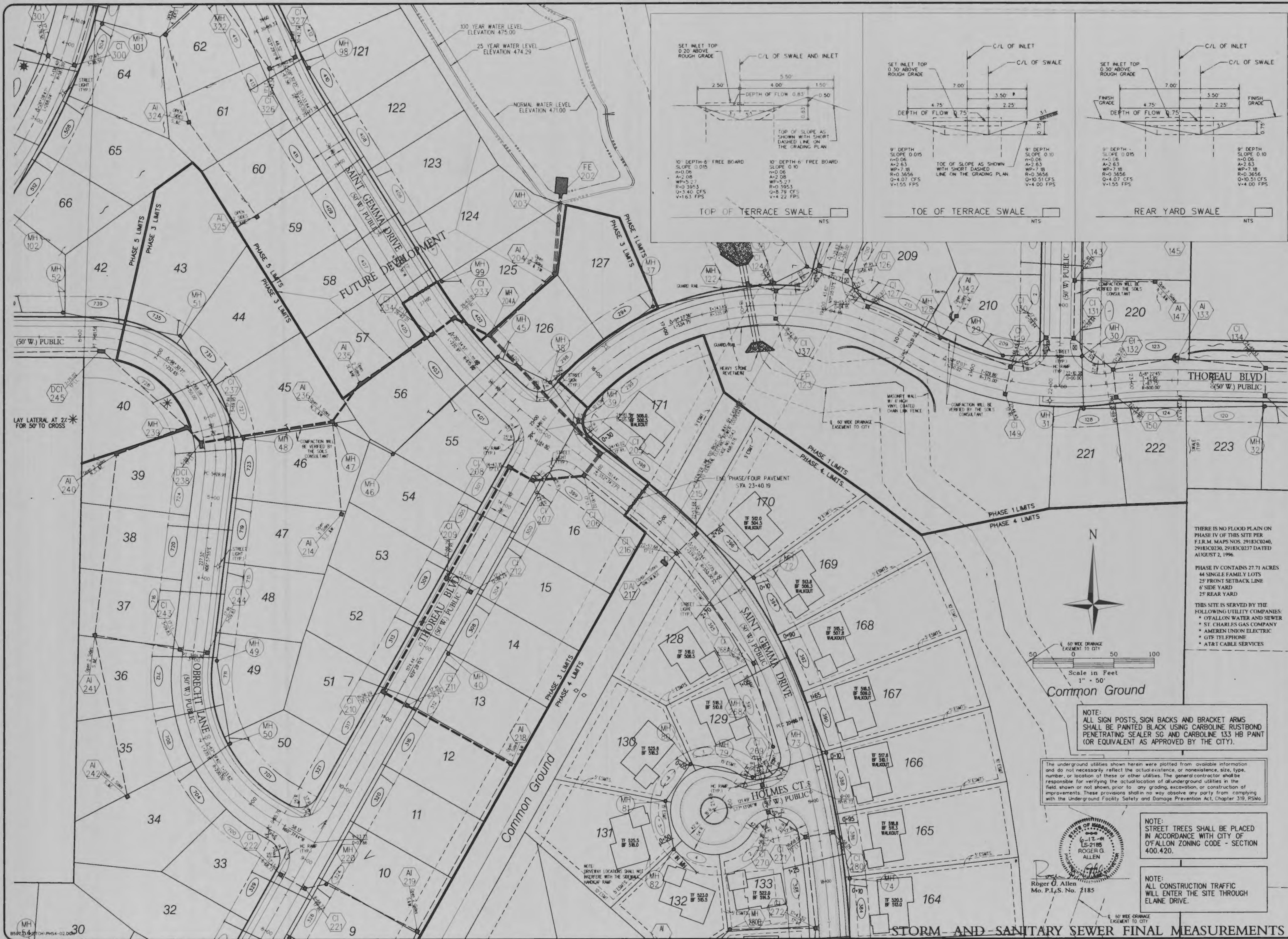
5933 South Highway 94, Suite 201

St. Charles, Missouri 63304-5611

636-939-5155

636-939-5138 FAX





THERE IS NO FLOOD PLAIN ON PHASE IV OF THIS SITE PER F.I.R.M. MAPS NOS. 29183C0240, 29183C0230, 29183C0237 DATED AUGUST 2, 1996.

PHASE IV CONTAINS 27.71 ACRES  
 44 SINGLE FAMILY LOTS  
 25' FRONT SETBACK LINE  
 6' SIDE YARD  
 25' REAR YARD

THIS SITE IS SERVED BY THE FOLLOWING UTILITY COMPANIES:  
 • O'FALLON WATER AND SEWER  
 • ST. CHARLES GAS COMPANY  
 • AMEREN UNION ELECTRIC  
 • GTE TELEPHONE  
 • AT&T CABLE SERVICES

NOTE:  
 ALL SIGN POSTS, SIGN BACKS AND BRACKET ARMS SHALL BE PAINTED BLACK USING CARBOLINE RUSTBOND PENETRATING SEALER SG AND CARBOLINE 133 HB PAINT (OR EQUIVALENT AS APPROVED BY THE CITY).

The underground utilities shown herein were plotted from available information and do not necessarily reflect the actual existence, or nonexistence, size, type, number, or location of these or other utilities. The general contractor shall be responsible for verifying the actual location of all underground utilities in the field, shown or not shown, prior to any grading, excavation, or construction of improvements. These provisions shall in no way absolve any party from complying with the Underground Facility Safety and Damage Prevention Act, Chapter 319, RSMo.



NOTE:  
 STREET TREES SHALL BE PLACED IN ACCORDANCE WITH CITY OF O'FALLON ZONING CODE - SECTION 400.420.

NOTE:  
 ALL CONSTRUCTION TRAFFIC WILL ENTER THE SITE THROUGH ELAINE DRIVE.

WALDEN POND, LLC.  
 2529 LEMAY FERRY RD.  
 ST. LOUIS, MO. 63125



# THE VILLAGES AT WALDEN POND PHASE IV

SITE PLAN

Design By: G.A.S.  
 Drawn By: M.W.M.  
 Checked By: E.A.K.

B-5973

10-15-10

02

STORM AND SANITARY SEWER FINAL MEASUREMENTS





WALDEN POND,  
L.L.C.  
2529 LEMAY  
FERRY RD.,  
ST. LOUIS, MO. 63114

**VOLZ**

THE VILLAGES AT  
WALDEN POND PHASE I

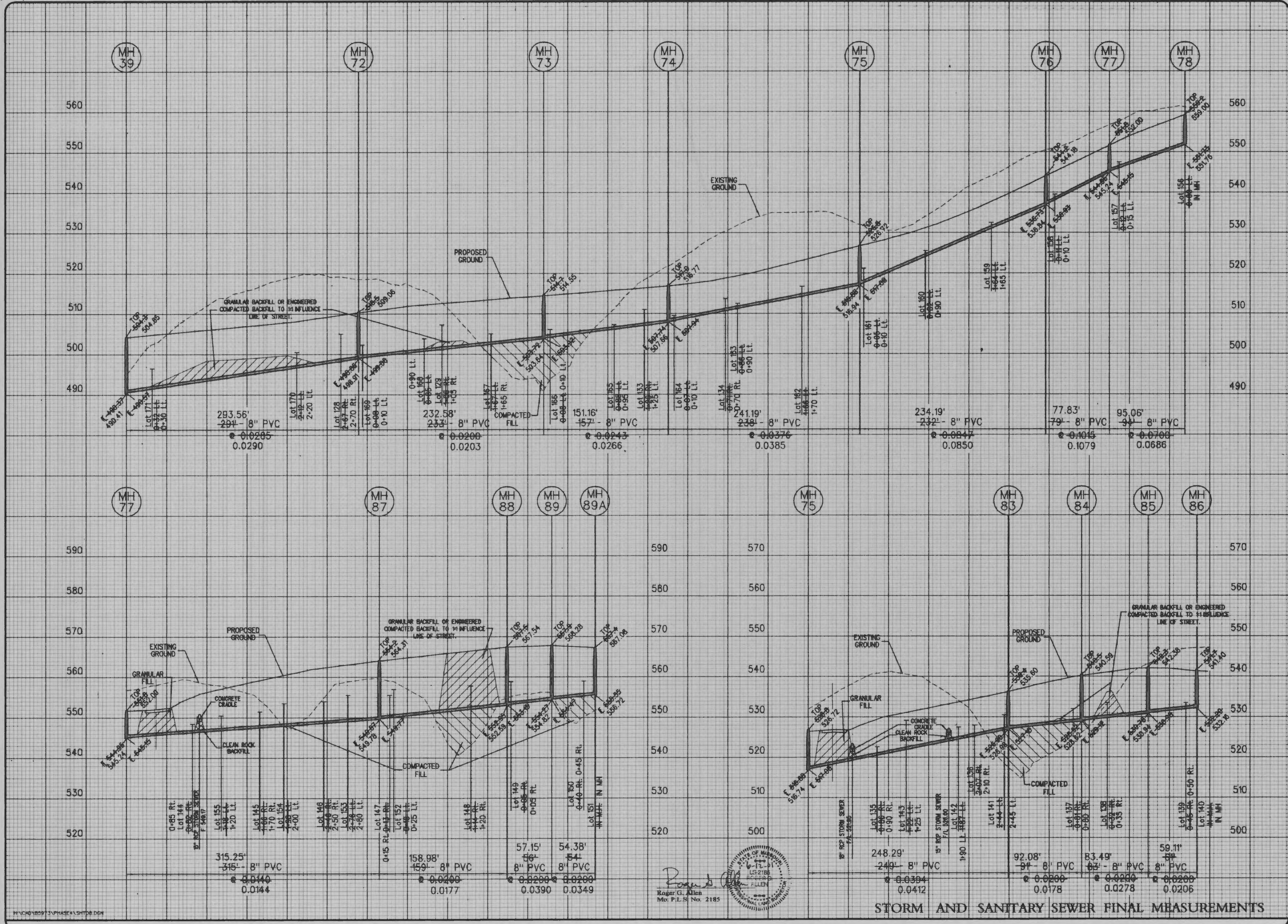
SITE PLAN

Design By: G.A.S.  
Drawn By: M.W.L.  
Checked By: E.A.K.  
B-9973  
10-13-00

STORM AND SANITARY SEWER FINAL MEASUREMENTS

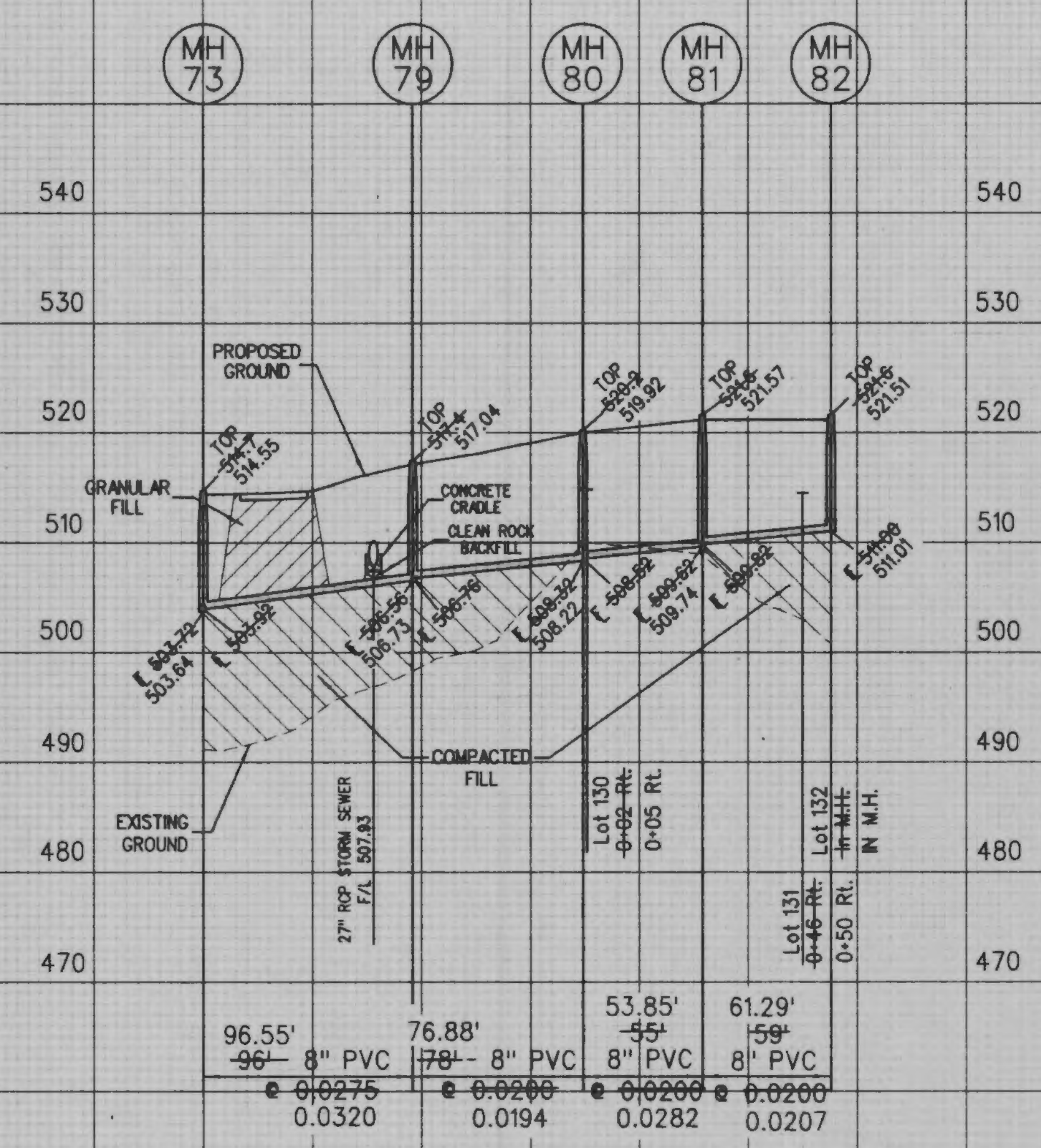


# THE VILLAGES AT WALDEN POND PHASE IV



STORM AND SANITARY SEWER FINAL MEASUREMENTS





Roger G. Allen  
 Mo. P.L.S. No. 2185

STORM AND SANITARY SEWER FINAL MEASUREMENTS



THE VILLAGES AT WALDEN POND PHASE IV

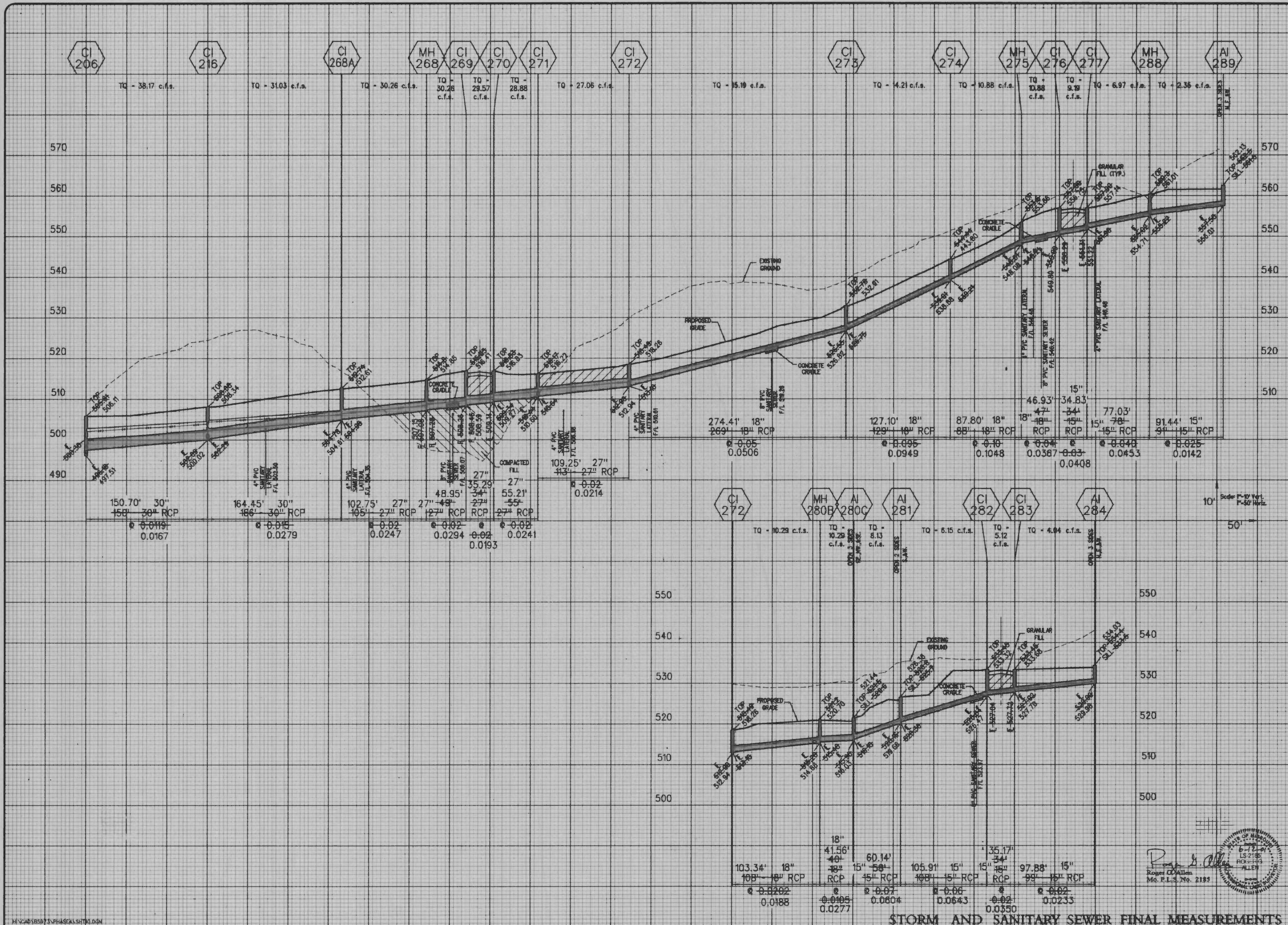
STORM SEWER PROFILES

Design By: G.A.S.  
Drawn By: G.A.S.  
Checked By: E.A.K.

B-5973

10-13-00

10



H:\CAD\18587\3\PHASE4\SH110.DGN

STORM AND SANITARY SEWER FINAL MEASUREMENTS



