

WAL-MART STORE #2616-04

O'FALLON, MISSOURI

FINAL SEWER & WATER MEASUREMENTS

VOLZ

INDEX

| | |
|---------------------------------|----|
| SITE PLAN | 01 |
| SANITARY & SEWER PROFILES | 02 |
| STORM SEWER PROFILES | 03 |
| OUTFALL STRUCTURE DETAILS | 04 |

BENCHMARK CONTROL:

FEMA RM66 - "CROSS" CUT ON THE WEST BOLT OF A FIRE HYDRANT AT N.E. CORNER OF MILL POND DRIVE AND SPRING HILL DRIVE
ELEVATIONS = 581.74

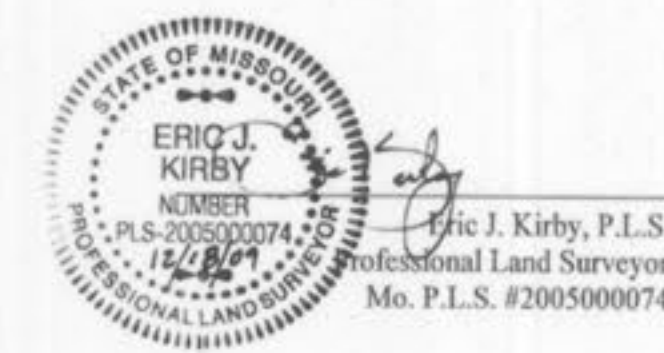
SITE BENCHMARK CONTROL

TBM "1" - CUT "L" IN THE S.E. CORNER OF BRIDGE OVER BELLEAU CREEK, AT TOP OF BRIDGE WALL, WEST OF THE INTERSECTION OF MEXICO ROAD AND WOODLAWN AVENUE.
ELEVATION = 518.50

TBM "A" - CHISELED "SW" ON TOP CONCRETE BASE OF LIGHT STANDARD IN PARKING LOT DIRECTLY IN FRONT OF "OFFICE MAX" BUILDING.
ELEVATION 539.65

TBM "B" - CHISELED "SQ" ON CONCRETE BASE OF LIGHT STANDARD AT N.W. CORNER OF INTERSECTION OF MAIN ENTRANCE TO WAL-MART AND OUTSIDE DRIVE FOR PARKING LOT.
ELEVATION = 542.78

The existing sewer lengths, sizes, flowlines, depths of structures and sewers and locations with respect to existing or proposed easements have been measured. The results of those measurements are shown on this set of Final Measurement Plans. Since the wye locations have been plotted from information provided by the sewer contractor or other sources, I disclaim any responsibility for that specific information.



Note:
The results of those measurements are shown on this drawing by lining out the planned number and indicating the measured number adjacent to the planned number. All other numbers shown have not been measured or verified.

The location of the sewers were determined by locating the manholes and traversing in a straight line between them.

No hydraulic computations have been done on the measured lines to verify or confirm the capacity, freeboard or design requirements of the sewers or stormwater facilities.

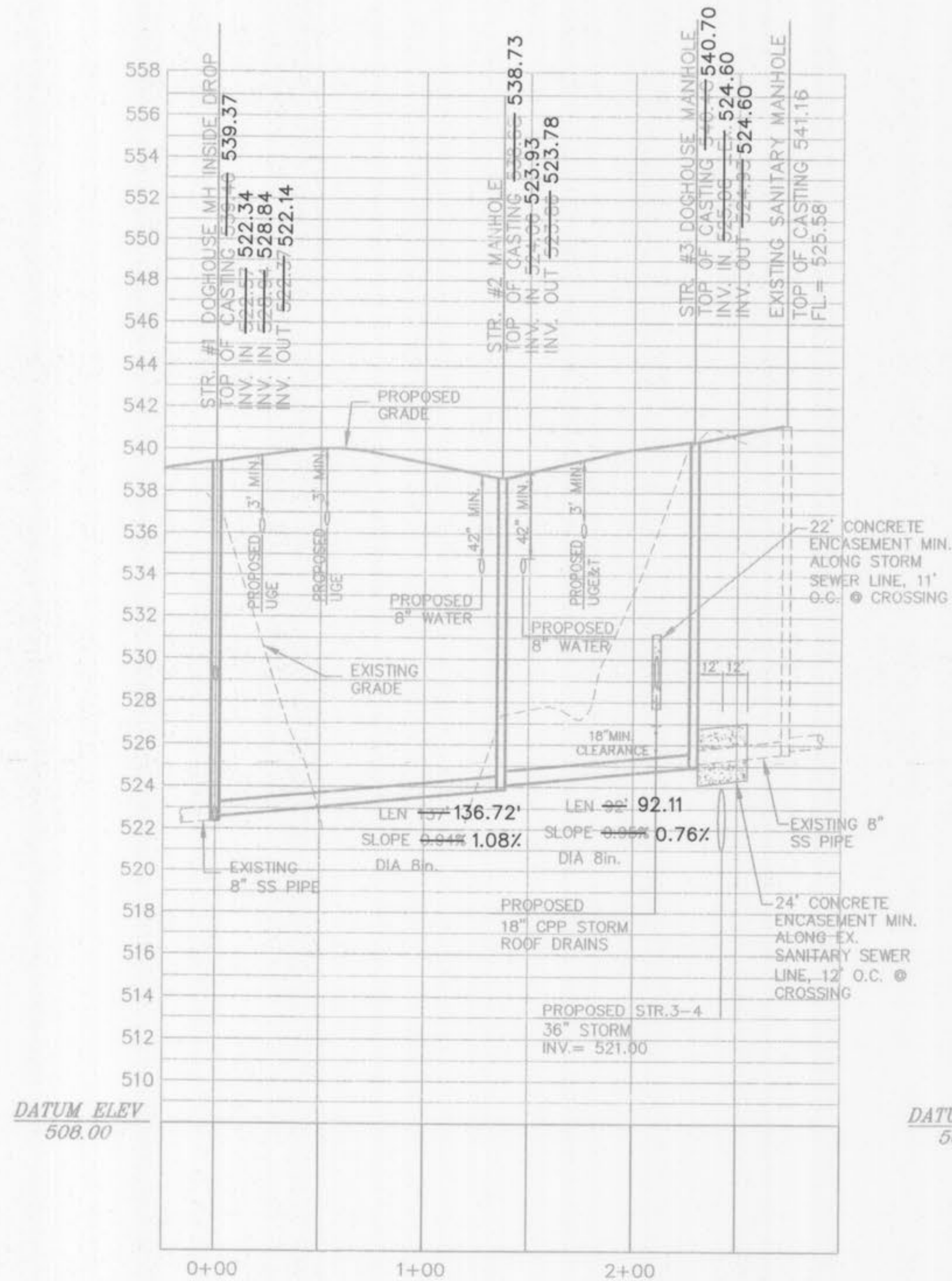
VOLZ
Incorporated
ENGINEERS
LAND PLANNING
LAND SURVEYING
TRANSPORTATION
CONST. MANAGEMENT
10809 Indian Head Tract, Blvd.
St. Louis, MO 63112
314.890.1250 Fax
www.volzing.com



Wal-mart Store # 2616-04
O'Fallon, Missouri

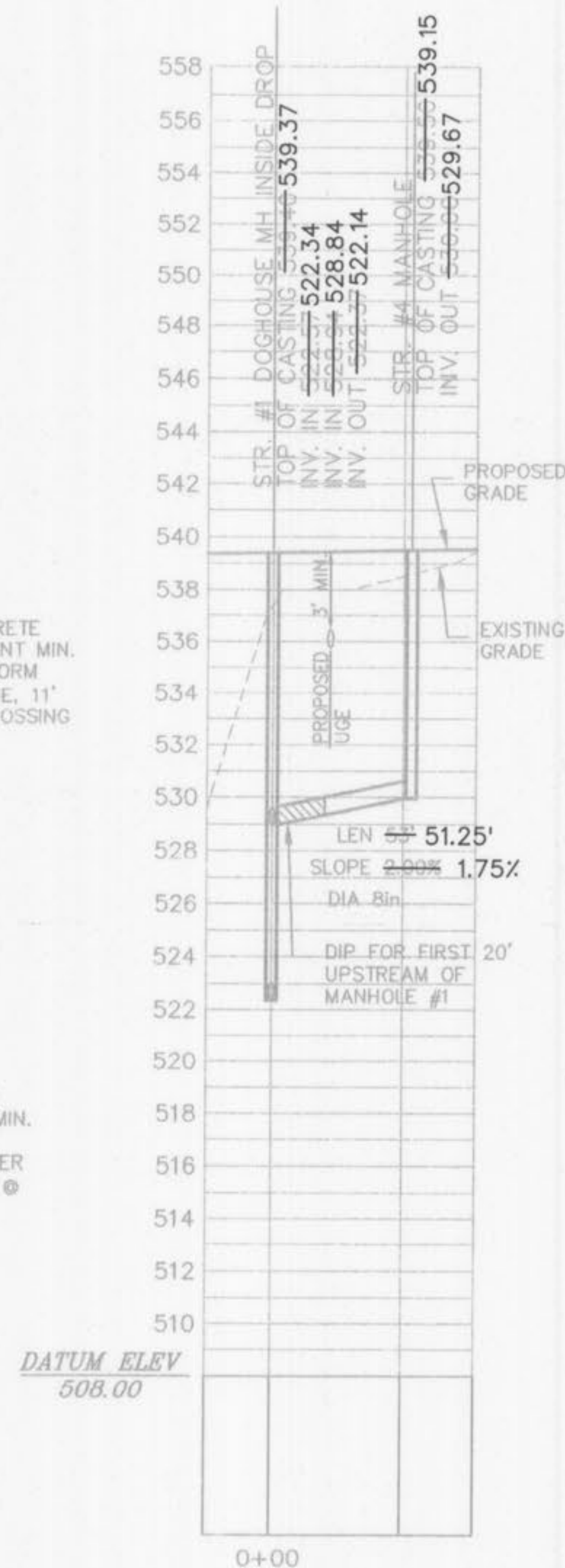
COVER SHEET
AS-BUILT

Drawn By: E.J.K.
Checked By: E.J.K.
VOLZ Pa 8529-34



SANITARY SEWER STR. #1 THRU #3

(PUBLIC)
 HORIZONTAL SCALE: 1" = 40'
 VERTICAL SCALE: 1" = 4'



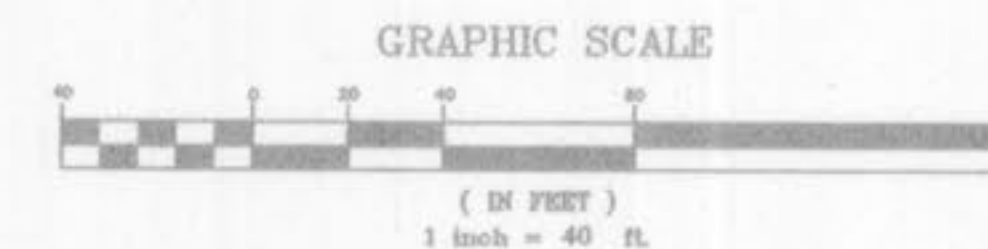
SANITARY SEWER STR. #1 TO #4

(PUBLIC)
 HORIZONTAL SCALE: 1" = 40'
 VERTICAL SCALE: 1" = 4'

FINAL MEASUREMENT PLANS

PLANNING AND DEV. DEPT. FILE NO. 00-109.02
 DATE OF PLANNING APPROVAL 09/06/2007

SANITARY SEWER PROFILES



NOTE:
 A CONCRETE CRADLE FOR RCP AND ENCASUREMENT FOR HDPE WILL BE REQUIRED FOR ALL STORM SEWER LINES WHEN CROSSING MORE THAN 18" ABOVE SANITARY LINES.

DIP PIPE

PIPE LENGTHS LISTED ARE BASED ON HORIZONTAL DISTANCE FROM CENTER OF STRUCTURE TO CENTER OF STRUCTURE AND USED FOR DESIGN. CONTRACTOR TO FIELD VERIFY ACTUAL PIPE LENGTHS NEEDED FOR CONSTRUCTION.
 CONTRACTOR IS RESPONSIBLE FOR COMPARING THE STORM SEWER AND SANITARY SEWER CHARTS WITH THE PROFILES FOR THE STORM SEWER & SANITARY SEWER LINES AND INFORMING THE ENGINEER OF ANY CONFLICTS OR DISCREPANCIES PRIOR TO COMMENCEMENT OF CONSTRUCTION.

THE CONTRACTOR IS SPECIFICALLY CAUTIONED THAT THE LOCATION AND/OR ELEVATION OF EXISTING UTILITIES AS SHOWN ON THESE PLANS IS BASED ON RECORDS OF THE VARIOUS UTILITY COMPANIES, AND WHERE POSSIBLE, MEASUREMENTS TAKEN IN THE FIELD. THE INFORMATION IS NOT TO BE RELIED ON AS BEING EXACT OR COMPLETE. THE CONTRACTOR MUST CALL THE APPROPRIATE UTILITY COMPANIES AT LEAST 72 HOURS BEFORE ANY EXCAVATION TO REQUEST EXACT FIELD LOCATION OF UTILITIES. IT SHALL BE THE RESPONSIBILITY OF THE CONTRACTOR TO RELOCATE UTILITIES WHICH CONFLICT WITH THE PROPOSED IMPROVEMENTS SHOWN ON THE PLANS.



OWNER-
 THE O'FALLON DEVELOPMENT, L.L.C.
 2127 INNERBELT BUSINESS CENTER DR.
 SUITE 200
 ST. LOUIS, MISSOURI 63114
 CONTACT: MR. DARRIN RIDENHOUR
 (314) 428-0900 PHONE
 (314) 428-0989 FAX

SANITARY PROFILES
 Drawn By: EJK
 Checked By: EJK
 VOLZ JOB #258-34
 H:\CAD\9400-8889\852\AS\sub\sub\12-16-08.DGN

Wal-mart Store # 2616-04
O'Fallon, Missouri

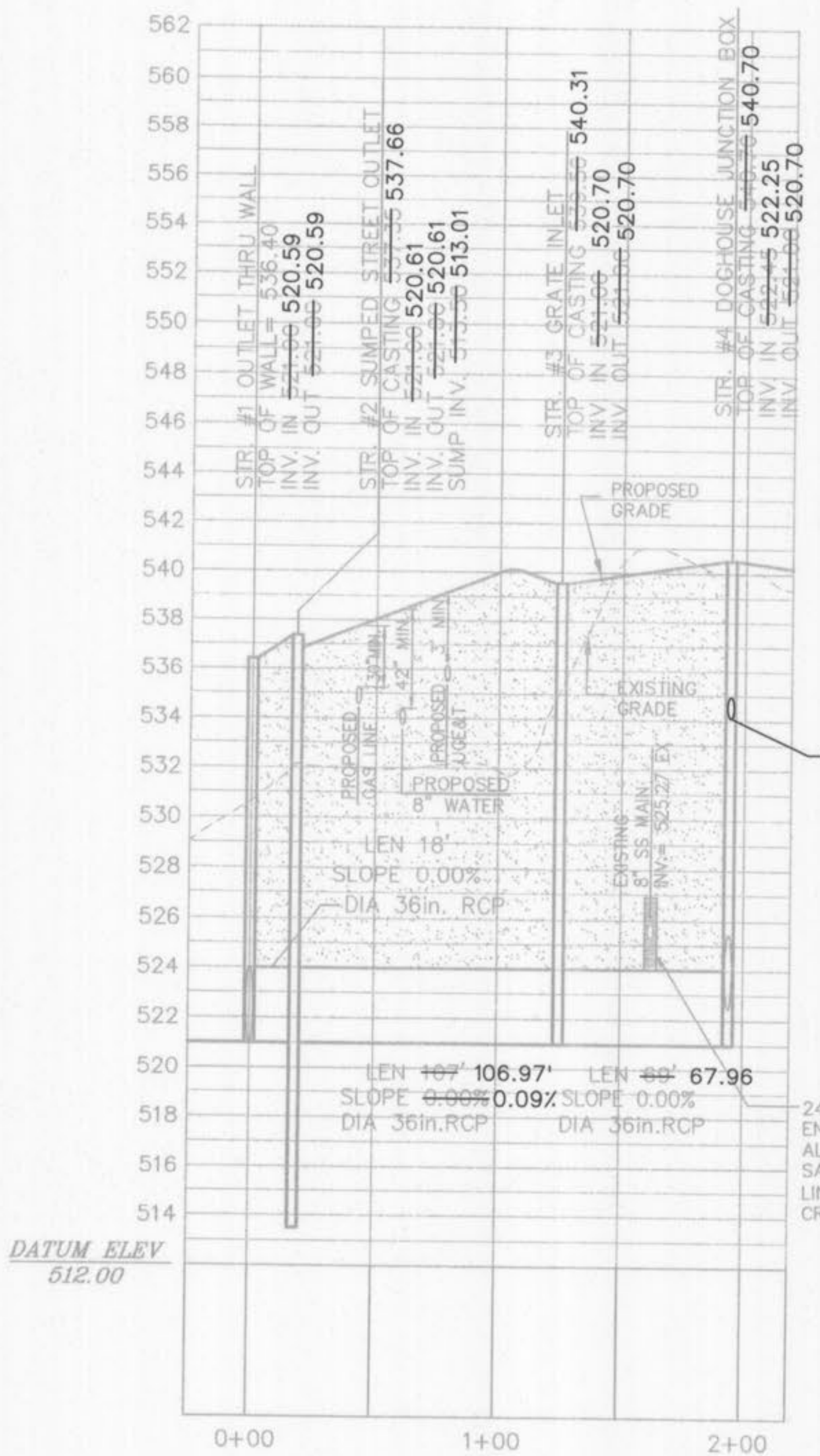


VOLZ Incorporated
 ENGINEERS
 LAND PLANNING
 SURVEYING
 TRANSPORTATION
 CONST. MANAGEMENT
 10840 Indian Head Invt. Bldg.
 St. Louis, Missouri 63132
 314.426.0212 Main
 314.426.0213 Fax
 www.volzinc.com

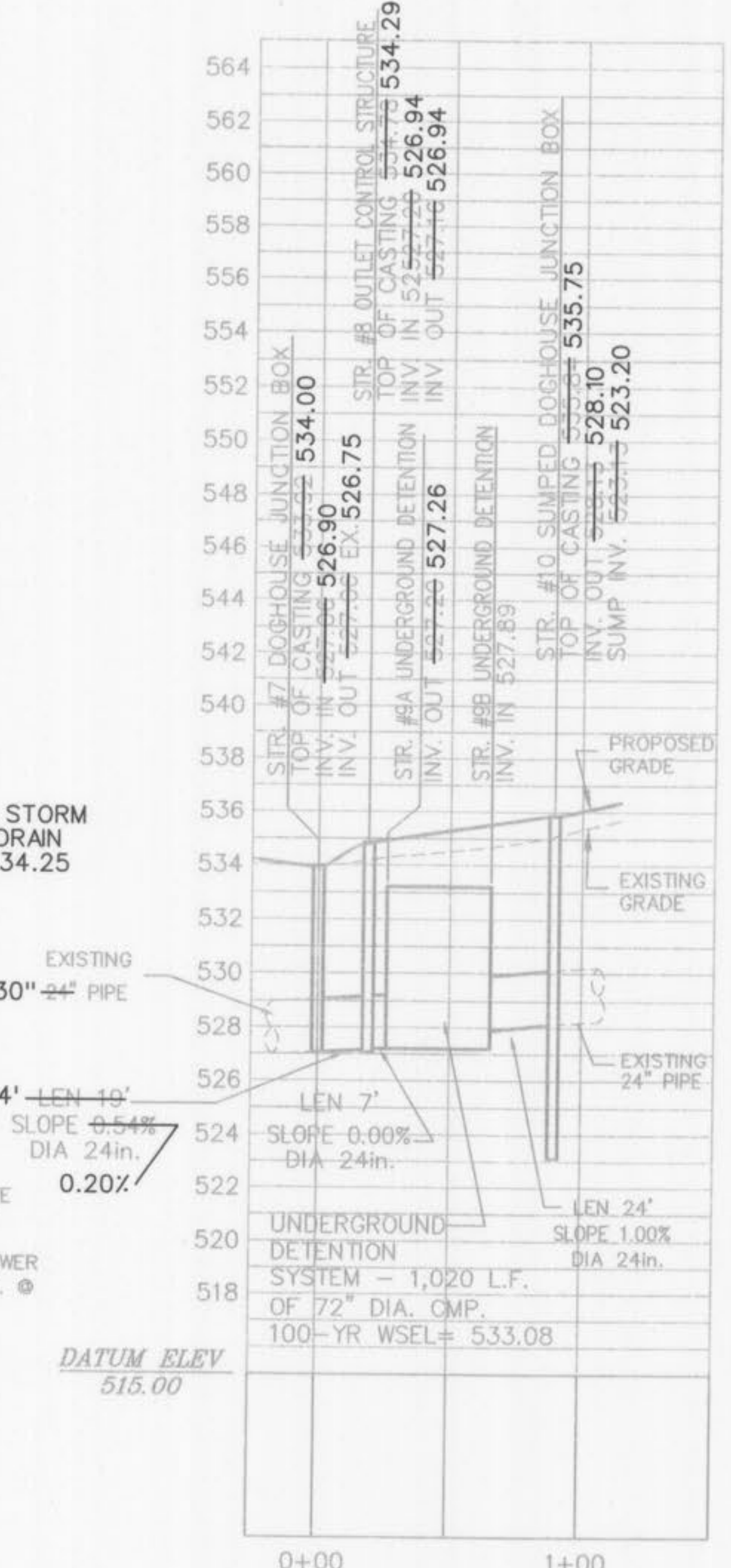


Wal-mart Store # 2616-04
O'Fallon, Missouri

STORM PROFILES
Drawn By: EJK
Checked By: EJK
VOLZ JOB# 9528-34
H:\CAD\8500-9899\8528\AS\Profiles\AS\Profile12-16-09.DGN
12/18/09
03



STORM SEWER STR. #1 THRU #4
(PRIVATE)
HORIZONTAL SCALE: 1" = 40'
VERTICAL SCALE: 1" = 4'



STORM SEWER STR. #7 THRU #10
(PRIVATE)
HORIZONTAL SCALE: 1" = 40'
VERTICAL SCALE: 1" = 4'

GRANULAR FILL

NOTE:
A CONCRETE CRADLE FOR RCP AND ENCASEMENT FOR HDPE WILL BE REQUIRED FOR ALL STORM SEWER LINES WHEN CROSSING MORE THAN 18" ABOVE SANITARY LINES.

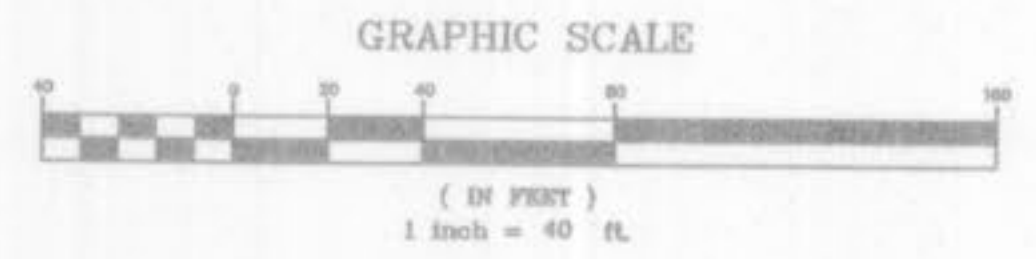
NOTE:
GRANULAR FILL IS REQUIRED AROUND STORM SEWER LINE #1-#4

PIPE LENGTHS LISTED ARE BASED ON HORIZONTAL DISTANCE FROM CENTER OF STRUCTURE TO CENTER OF STRUCTURE AND USED FOR DESIGN. CONTRACTOR TO FIELD VERIFY ACTUAL PIPE LENGTHS NEEDED FOR CONSTRUCTION.
CONTRACTOR IS RESPONSIBLE FOR COMPARING THE STORM SEWER AND SANITARY SEWER CHARTS WITH THE PROFILES FOR THE STORM SEWER & SANITARY SEWER LINES AND INFORMING THE ENGINEER OF ANY CONFLICTS OR DISCREPANCIES PRIOR TO COMMENCEMENT OF CONSTRUCTION.

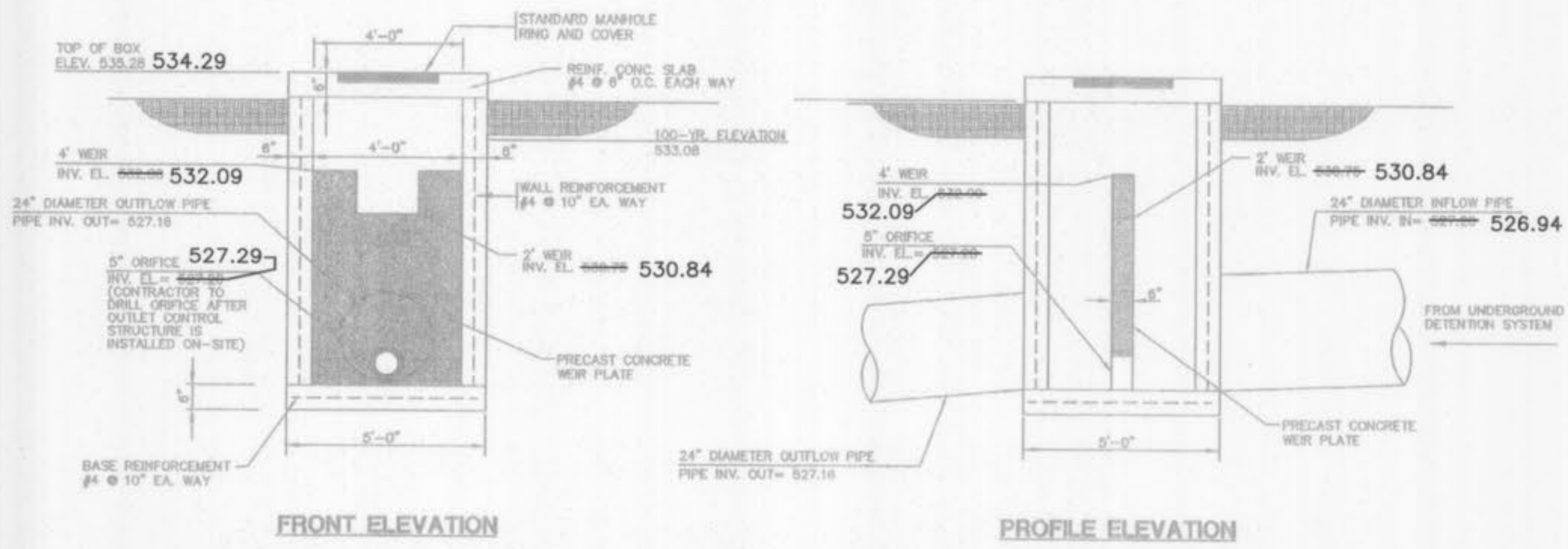
THE CONTRACTOR IS SPECIFICALLY CAUTIONED THAT THE LOCATION AND/OR ELEVATION OF EXISTING UTILITIES AS SHOWN ON THESE PLANS IS BASED ON RECORDS OF THE VARIOUS UTILITY COMPANIES, AND WHERE POSSIBLE, MEASUREMENTS TAKEN IN THE FIELD. THE INFORMATION IS NOT TO BE RELIED ON AS BEING EXACT OR COMPLETE. THE CONTRACTOR MUST CALL THE APPROPRIATE UTILITY COMPANIES AT LEAST 72 HOURS BEFORE ANY EXCAVATION TO REQUEST EXACT FIELD LOCATION OF UTILITIES. IT SHALL BE THE RESPONSIBILITY OF THE CONTRACTOR TO RELOCATE UTILITIES WHICH CONFLICT WITH THE PROPOSED IMPROVEMENTS SHOWN ON THE PLANS.

FINAL MEASUREMENT PLANS
PLANNING AND DEV. DEPT. FILE NO.: 00-109.02
DATE OF PLANNING APPROVAL: 09/08/2007

STORM SEWER PROFILES



OWNER-
THE O'FALLON DEVELOPMENT, L.L.C.
227 HINDEBELT BUSINESS CENTER DR.
SUITE 200
ST. LOUIS, MISSOURI 63114
CONTACT: MRL DARRIN RIDENHOUR
(314) 429-0900 PHONE
(314) 429-0999 FAX



FRONT ELEVATION

PROFILE ELEVATION

NOTE: CONTRACTOR SHALL SUBMIT A SHOP DRAWING SIGNED AND SEALED BY A PROFESSIONAL ENGINEER LICENSED IN THE STATE OF MISSOURI FOR APPROVAL.

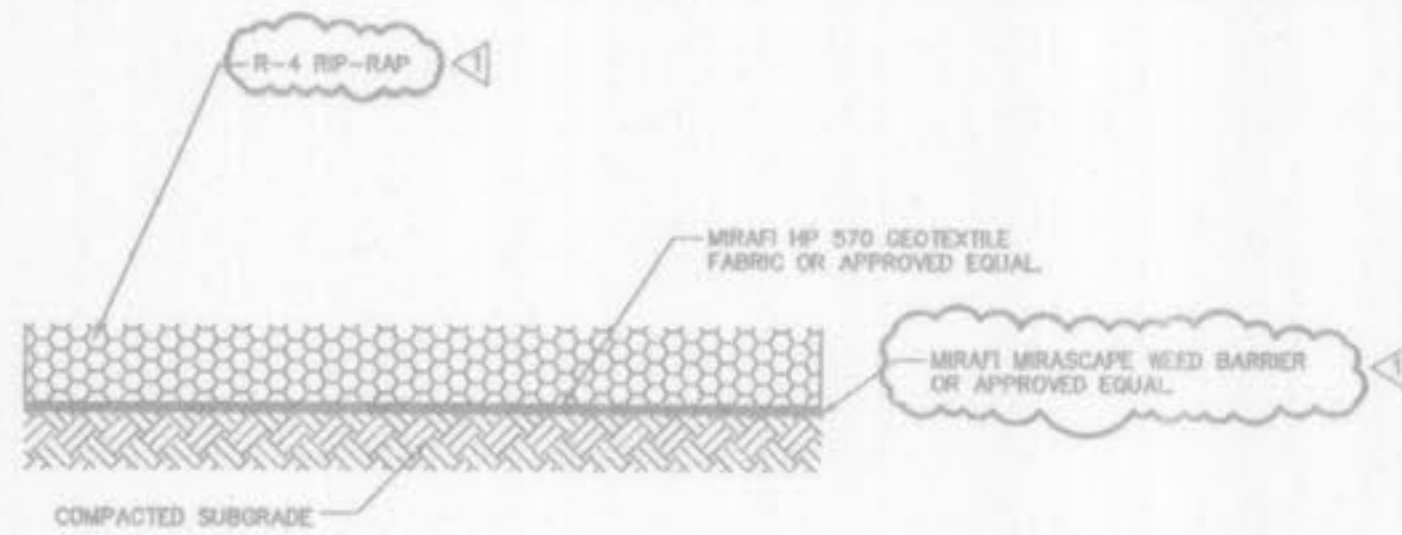
OUTLET CONTROL STRUCTURE DETAIL

N.T.S.
(STORM STRUCTURE #8)

Provide a marking on the storm sewer inlets. The City will allow the following markers and adhesive procedures only as shown in the table below or an approved equal by Almetek Industries. 'Peel and stick' adhesive pads will not be allowed.

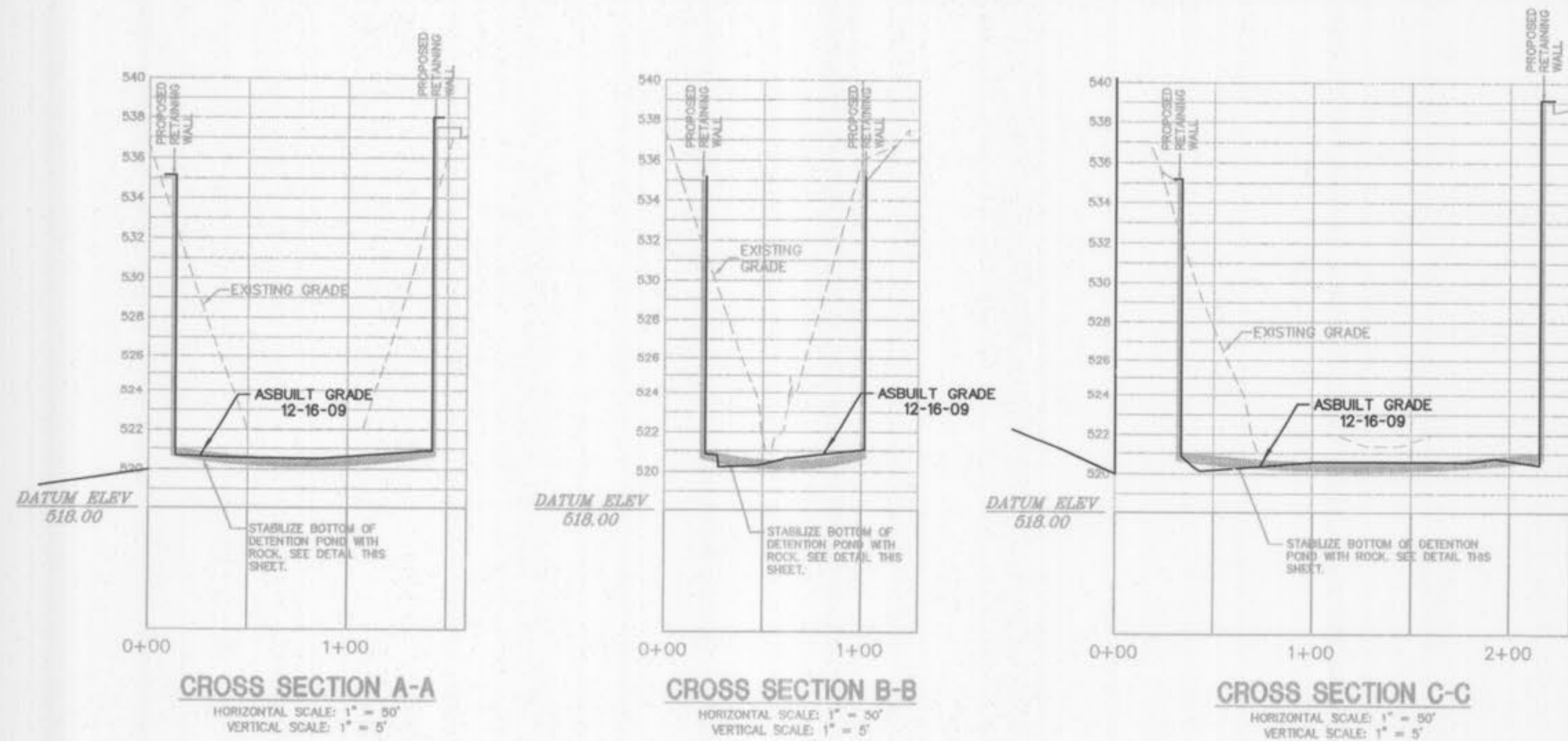
| Manufacturer | Size | Adhesive | Style | Message (Part #) | Website |
|-------------------------|--------|----------|----------------|---|---------------------------|
| ACP International | 3 7/8" | Epoxy | Crystal Cap | No Dumping Drains To Waterways (SD-W-CC) | www.scpiinternational.com |
| DAS Manufacturing, Inc. | 4" | Epoxy | Standard Style | No Dumping Drains To Stream (#SDS) | www.dasmanufacturing.com |

STORM SEWER INLET MARKINGS



DETENTION POND BOTTOM STABILIZATION

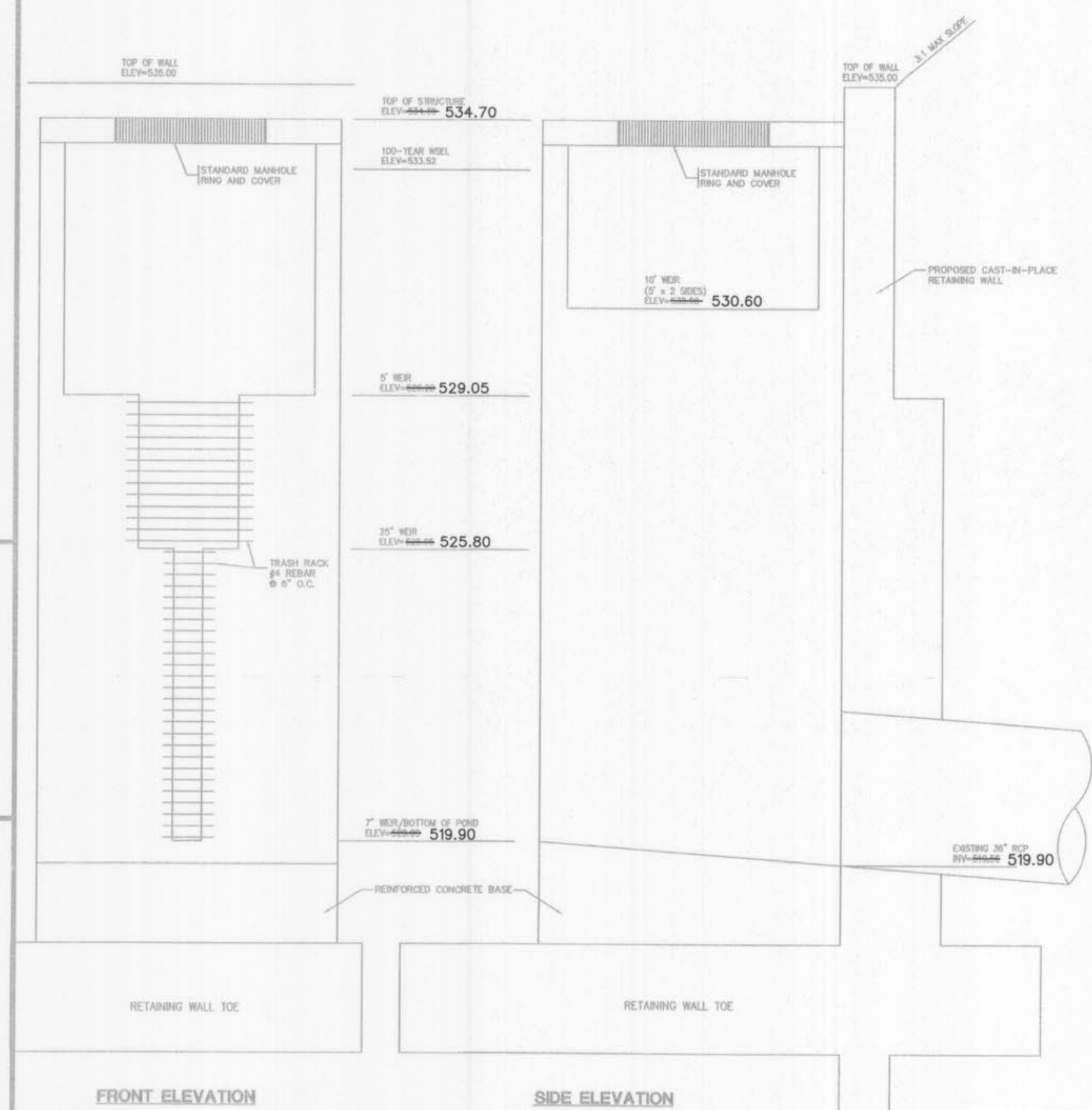
N.T.S.



CROSS SECTION A-A

CROSS SECTION B-B

CROSS SECTION C-C



FRONT ELEVATION

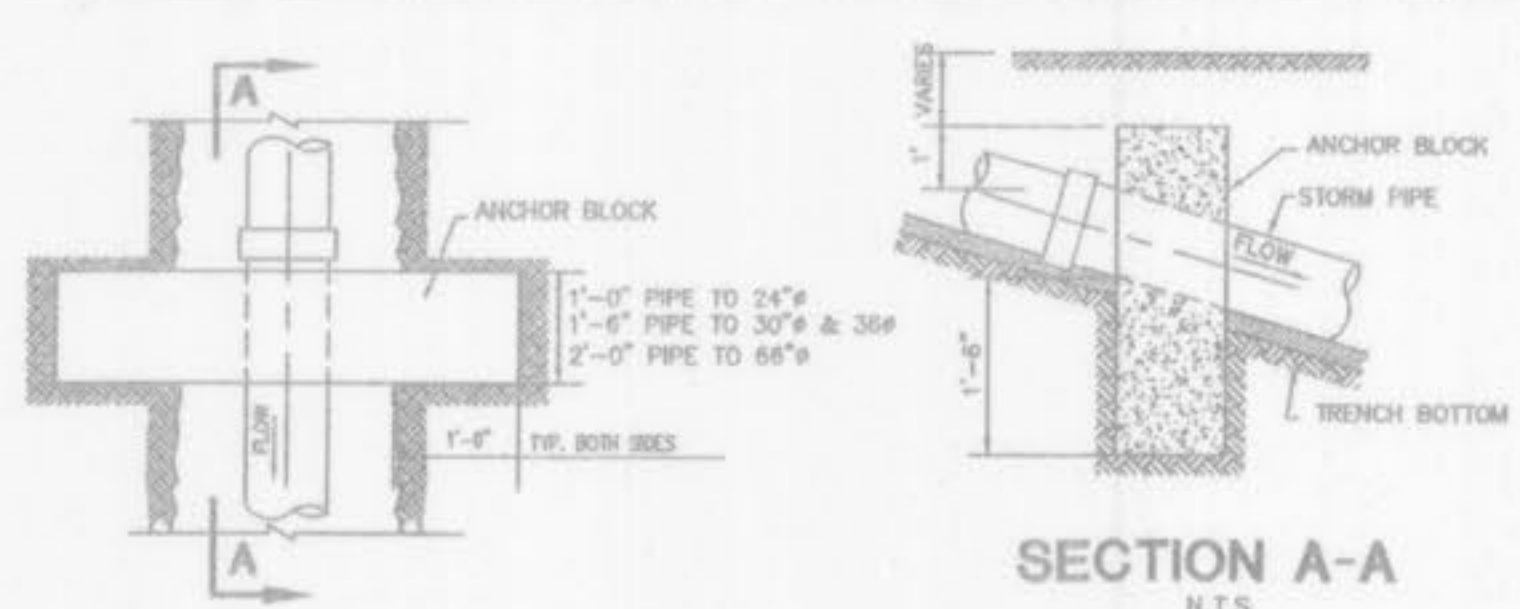
SIDE ELEVATION

OUTLET CONTROL STRUCTURE SHOWN FOR REFERENCE ONLY. REFER TO RETAINING WALL DESIGN DRAWINGS FOR CONSTRUCTION DETAIL.

DETENTION POND OUTLET CONTROL STRUCTURE

N.T.S.

FINAL MEASUREMENT PLANS



SECTION A-A

CONCRETE ANCHOR FOR STORM OR SEWER PIPE

N.T.S.

PLANNING AND DEV. DEPT. FILE NO.: 00-109.02 DATE OF PLANNING APPROVAL: 09/06/2007

GRADING PLAN DETAILS

VOLZ Incorporated
ENGINEERS
LAND PLANNING
LAND SURVEYING
TRANSPORTATION
CONSULTANTS
10849 Indian Head Inlet Blvd.
St. Louis, Missouri 63131
314.890.1250 FAX
www.volzinc.com



Wal-mart Store # 2616-04
O'Fallon, Missouri

STORM OUTLET CONTROL STRUCTURE DETAILS
Drawn By: EJK
Checked By: EJK
VOLZ JOB# 9528-34
H:\CAD\9500-958919529-Asb\utils\asb\utils 12-16-09.dwg
12-18-09
04