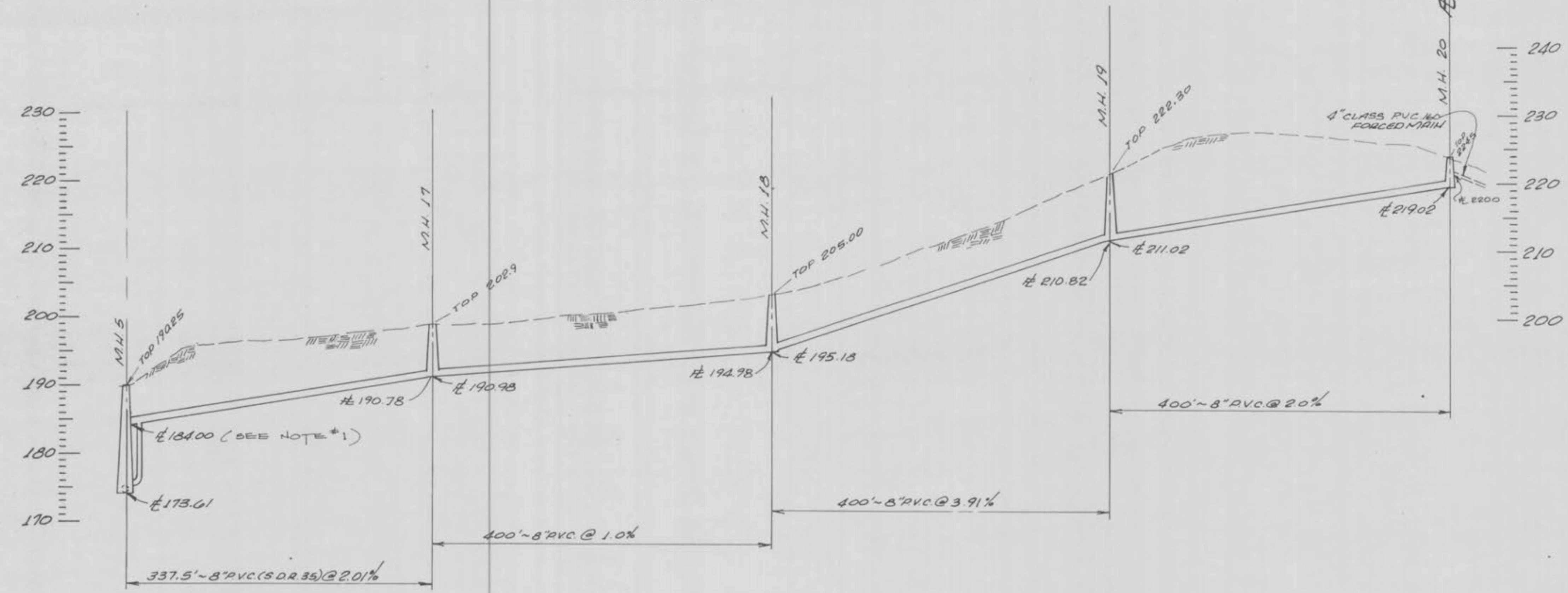
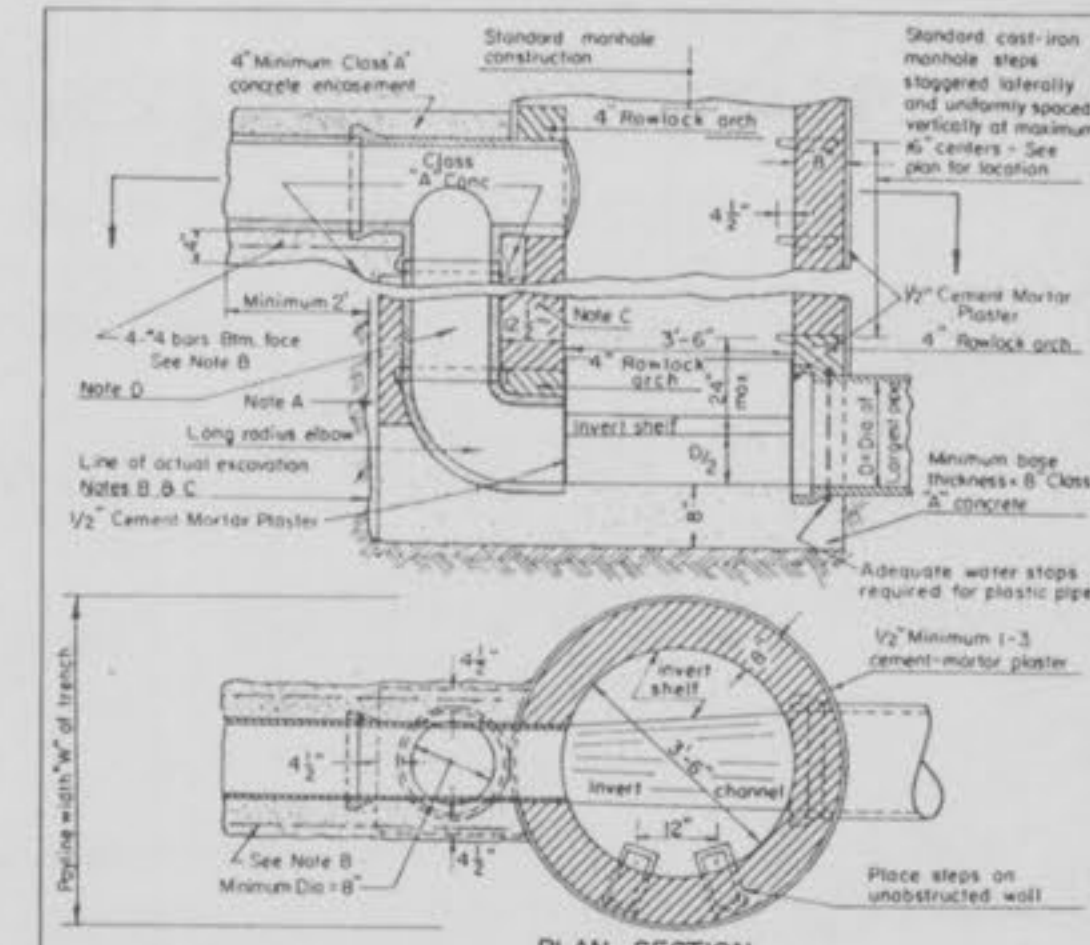


PLAN VIEW
SCALE: 1"=80'



PROFILE
SCALE: VERT. 1"=10'
HOR. 1"=60'



PLAN SECTION

Note A: If line of actual excavation extends beyond one (1) foot beyond, fill excess excavated space with construction material of drop or pack with low slump Class 'C' concrete to base of Class 'A' concrete enclosure.

Note B: If enclosed space outside of drop pipe manhole exceeds 1 foot, reinforce sewer pipe enclosure with a minimum of #4 rebar for length of enclosure.

Note C: Masonry enclosure of drop pipe shall be bonded and placed integrally with manhole.

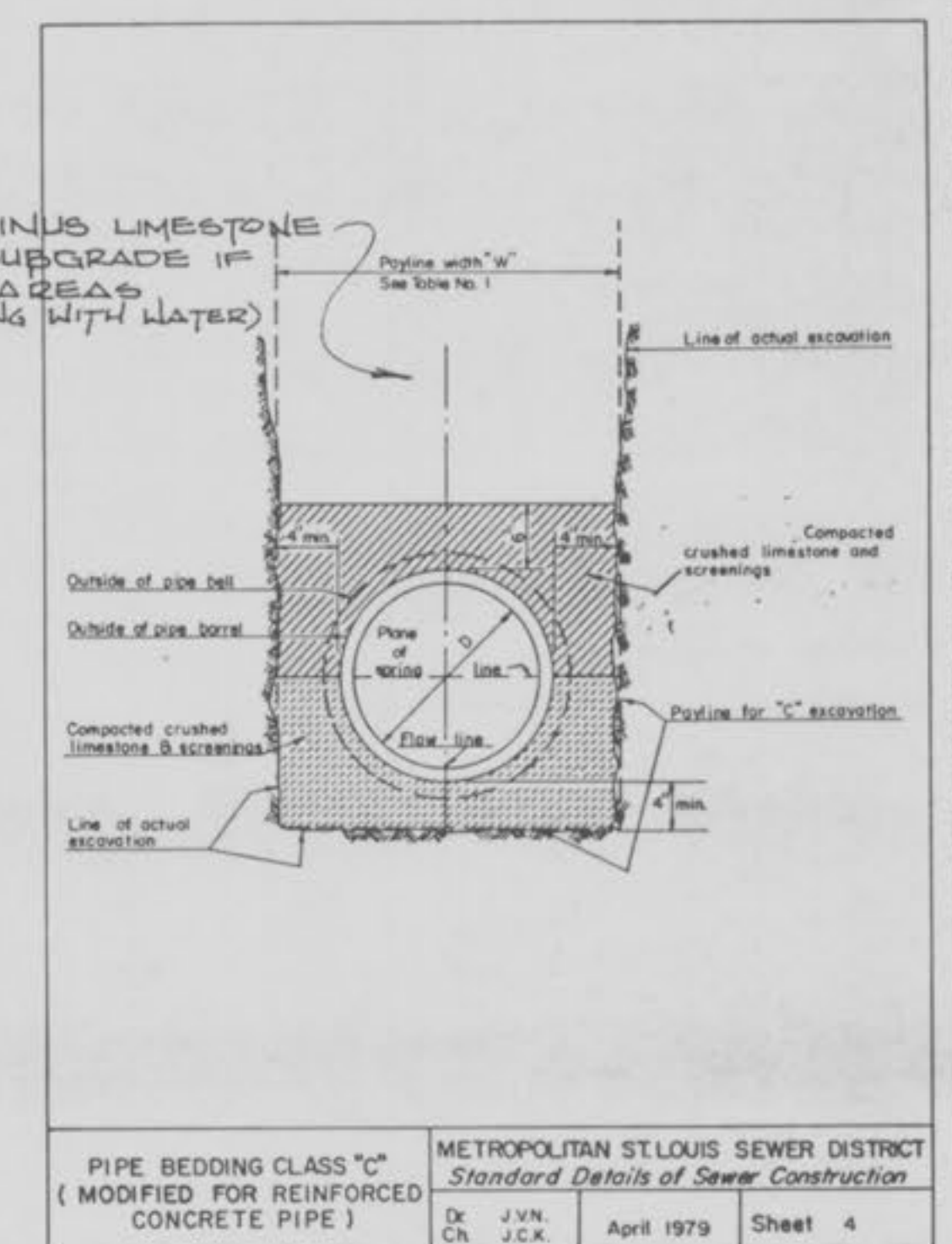
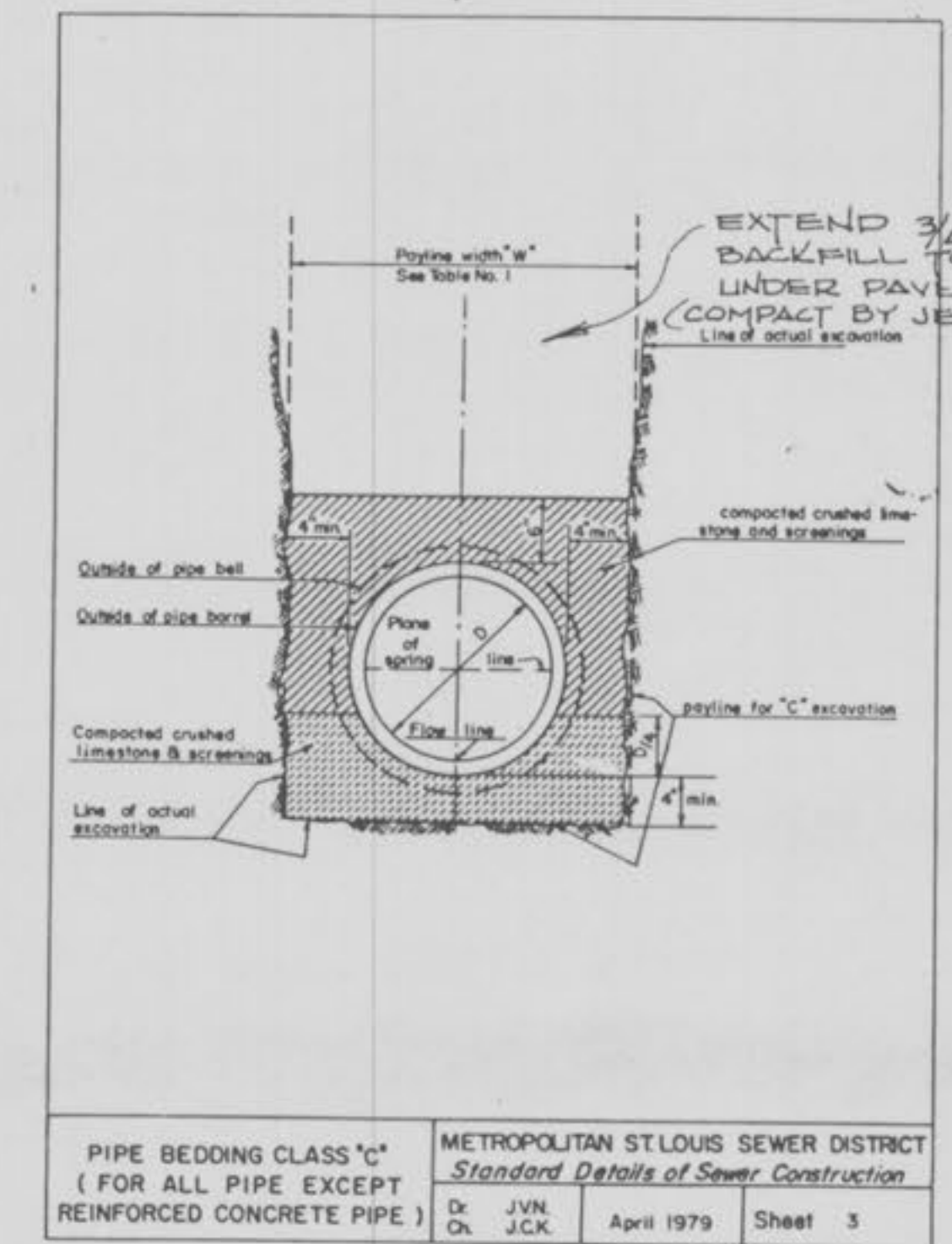
Note D: Diameter of drop pipe for combined sewers and sanitary sewers, is same as incoming 12" or 18" pipe sewer, and 12" for larger combined sewers, unless otherwise shown on project plans. For standard terms 12" or larger, it shall be steel connect to manhole at or within 3' above its finished.

Note E: New outside drop on existing manhole requires No. 4 rebar spaced vertically at 24" o.c. on each side of the drop pipe, grouted through 2" dia. holes in M.H. wall. (See length of bars 8').

Note F: For inside drops, notes A & B shall apply.

DROP MANHOLE
ON COMBINED, STORM OR METROPOLITAN ST. LOUIS SEWER DISTRICT
SANITARY SEWERS Standard Details of Sewer Construction
Dr. J.V.N. Ch. J.C.K. April 1979 Sheet 15

NOTE:
CITY OF O'FALLON DOES NOT PERMIT ANY MASONRY CONSTRUCTION OF MANHOLES OR OUTSIDE DROPS. ALL OUTSIDE PIPE SUPPORT SHALL BE FORMED CLASS 'A' CONCRETE.



- NOTES:
- DO NOT PLUG TOP LINE OF DROP MANHOLES.
 - USE CLAY & BAILEY NO. 2008, NEENAH R 1736, DEBTER 1315, OR APPROVED EQUAL MANHOLE FRAME & COVER FOR STORM & SANITARY MANHOLES.
 - OUTSIDE OF MANHOLES SHALL HAVE TWO COATS OF AN ASPHALT OR COAL TAR PITCH WITH A COMBINED THICKNESS OF 31 MIL.

REVISIONS:	DATE	BY	DESCRIPTION
1	10-1-84		MADE ADJUSTMENT TO SANITARY SIZES
2	10-31-84		NOTES & DETAILS
3	12-3-84		DETAIL & NOTES
4	3-17-85		REVISE PLAN VIEW

DRAWN	JOB NO.	DATE
N.B.	8302.00	MARCH 84
CHECKED	SCALE	AS SHOWN

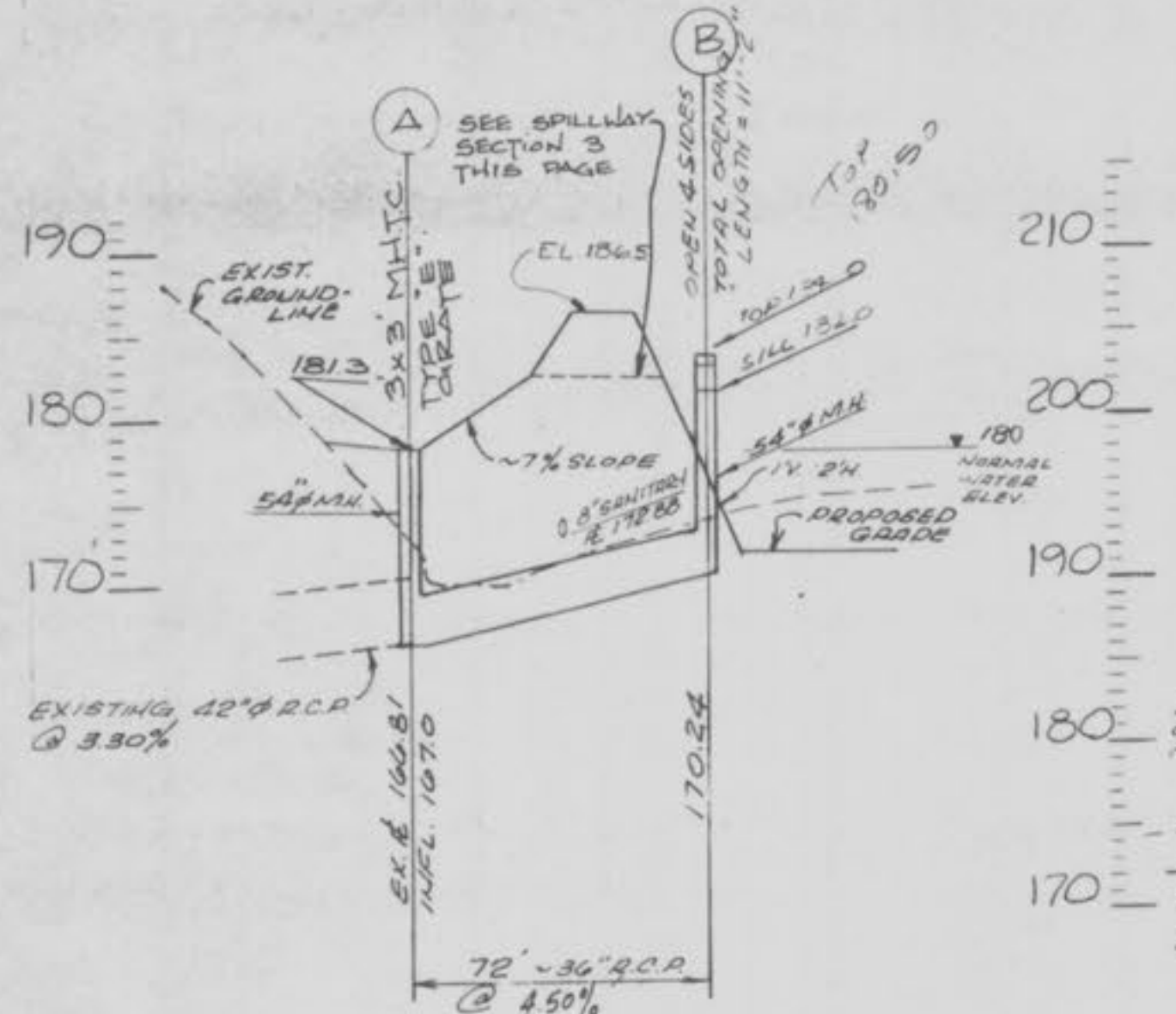
IKW / WARDLAW ASSOCIATES
ARCHITECTS · ENGINEERS · PLANNERS
6 WESTBURY DR. ST. CHARLES MISSOURI



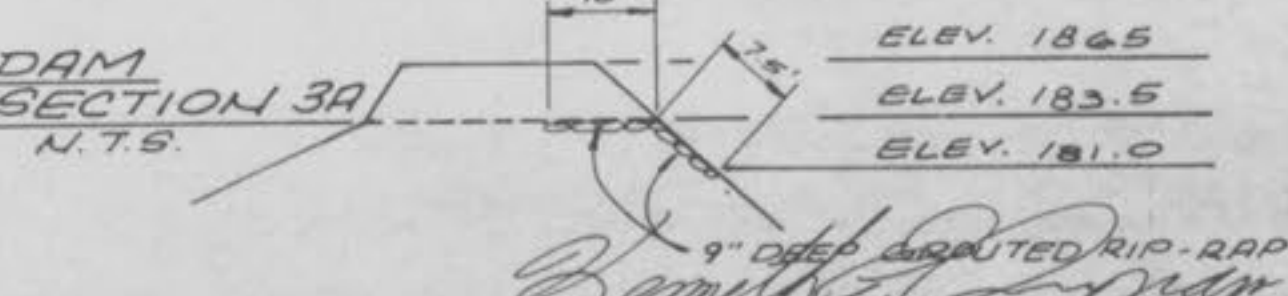
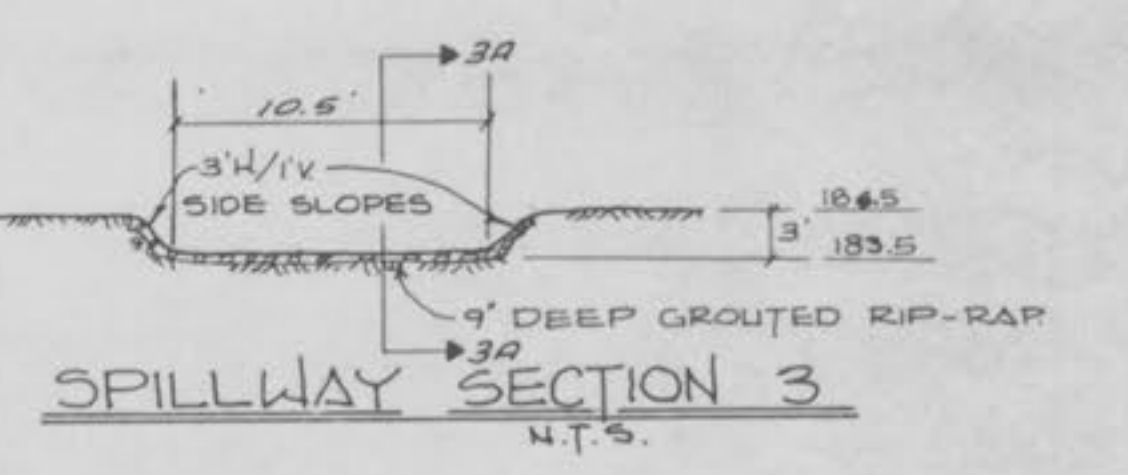
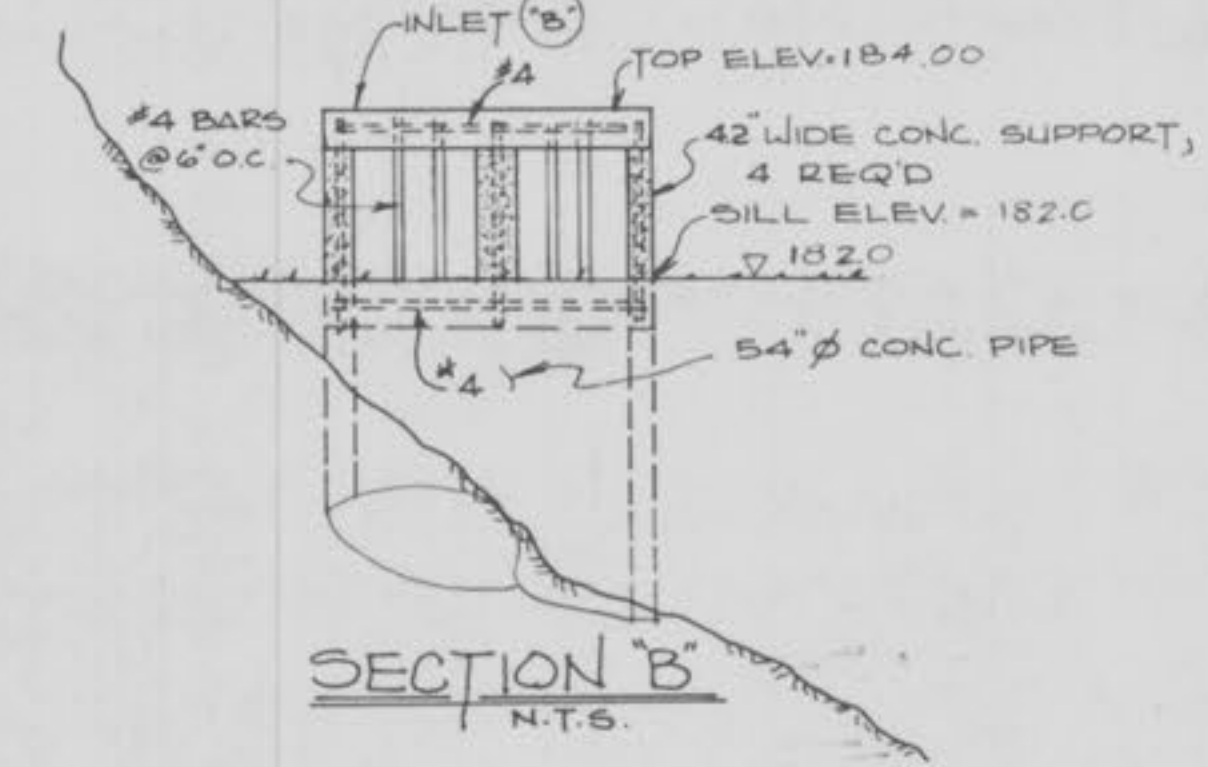
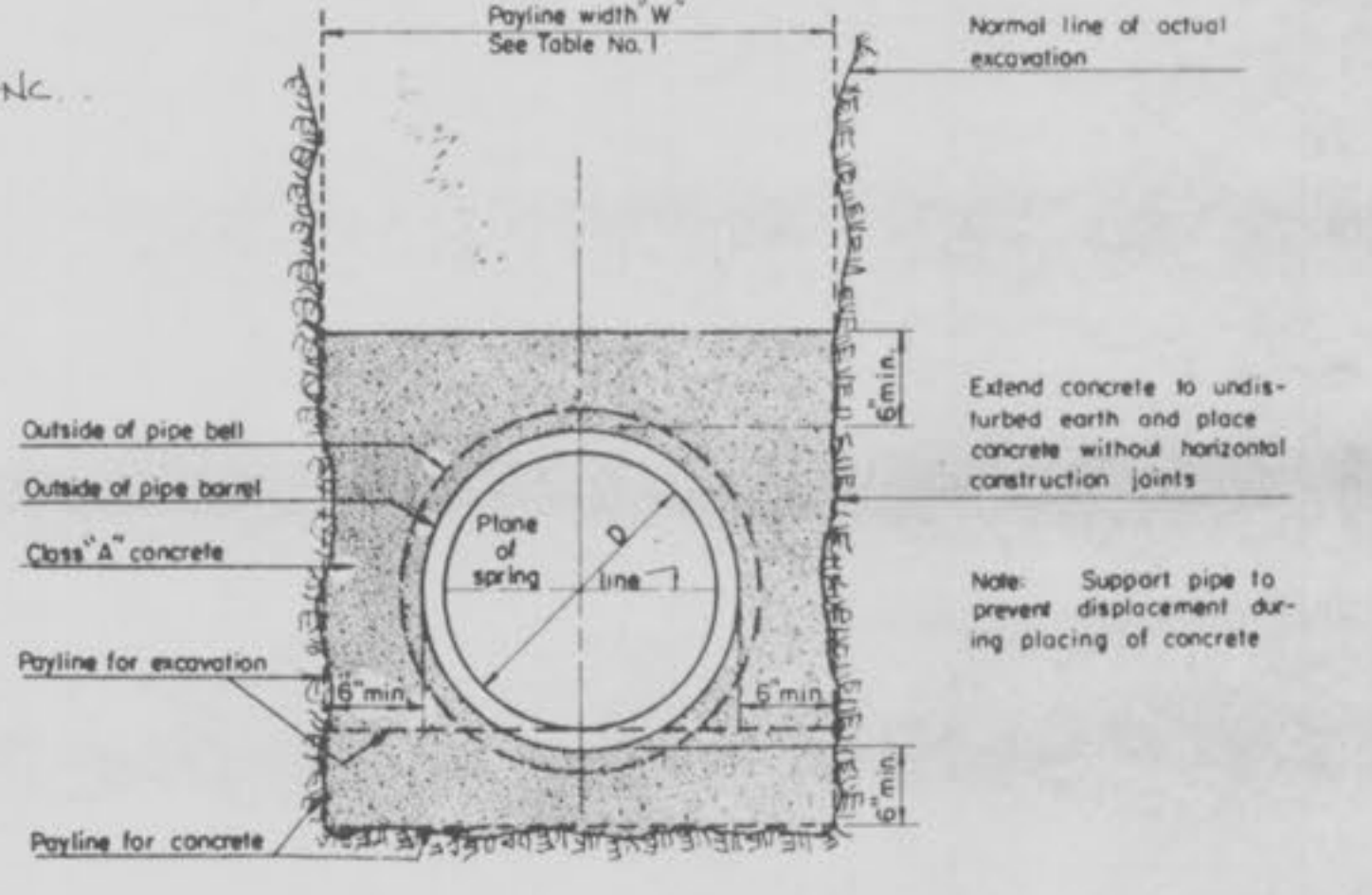
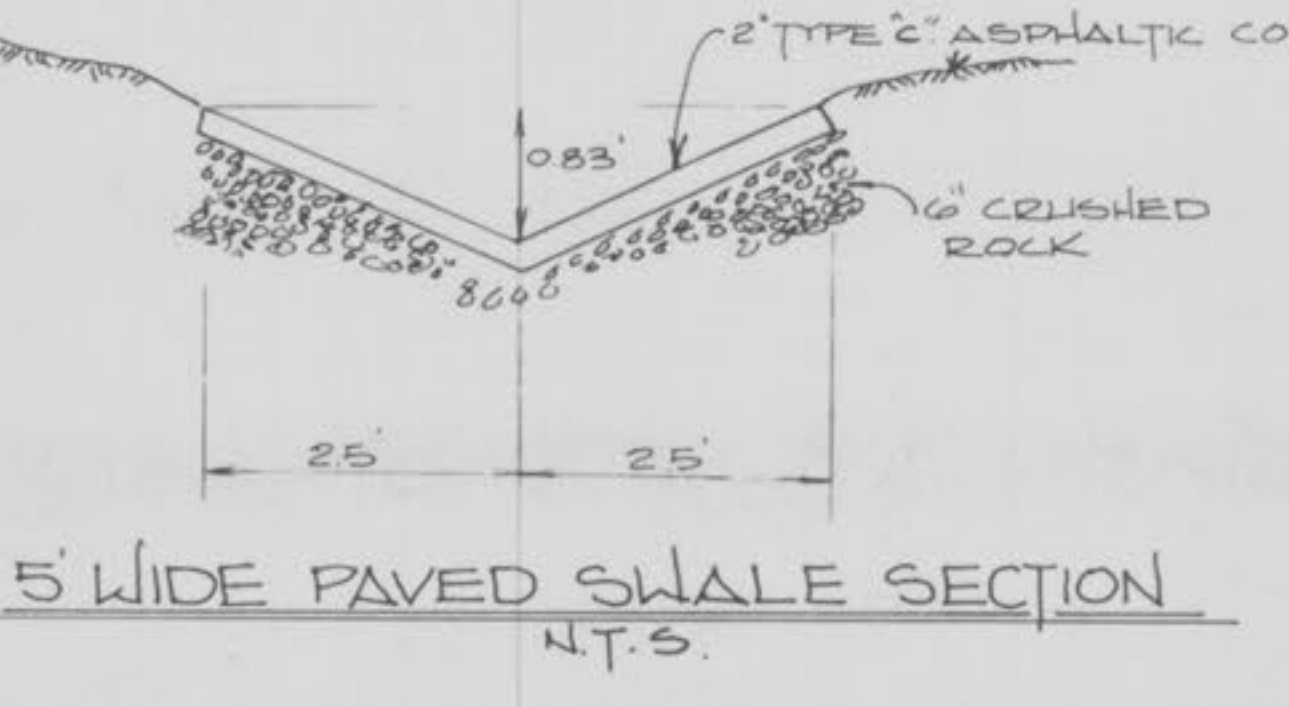
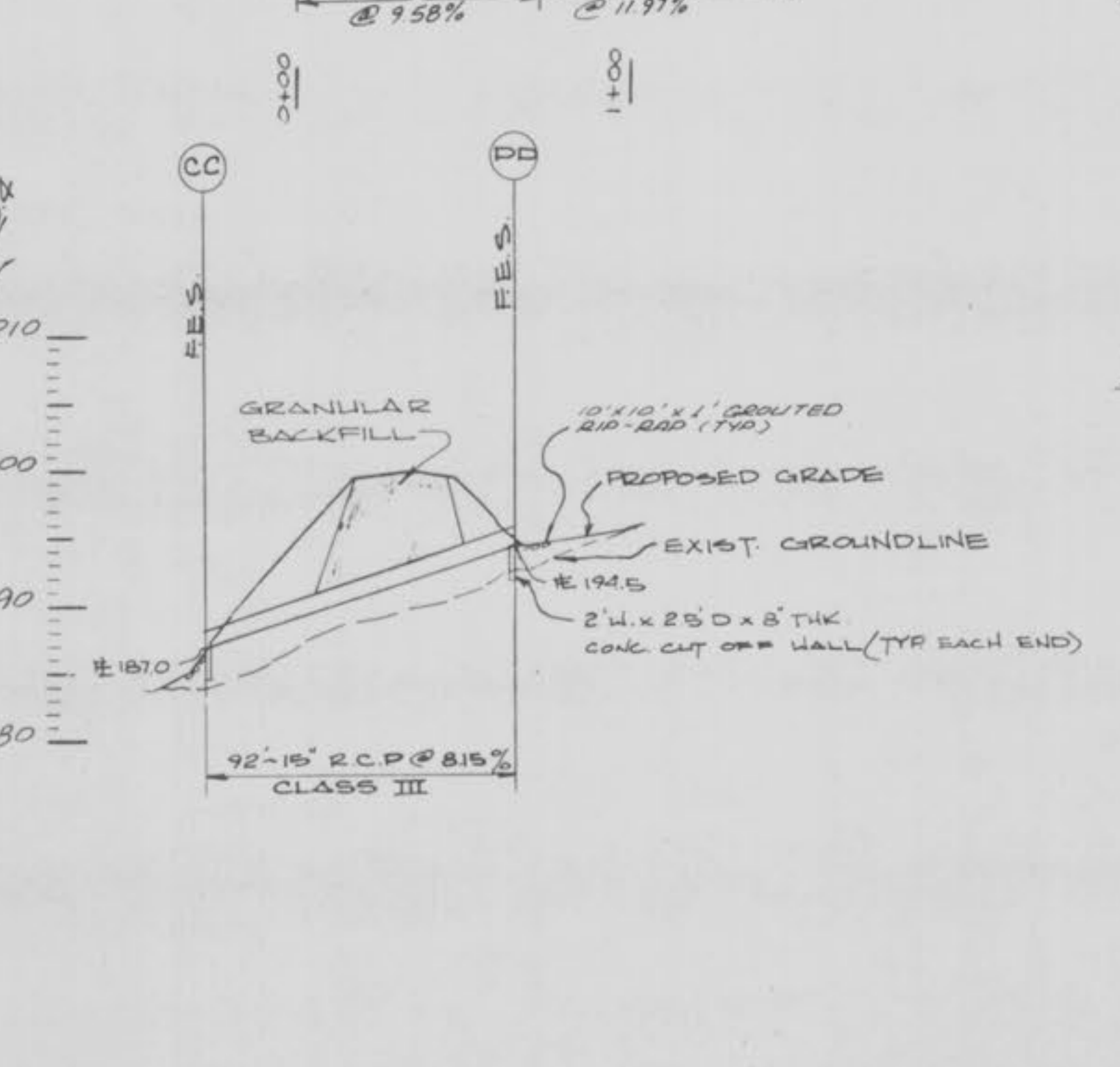
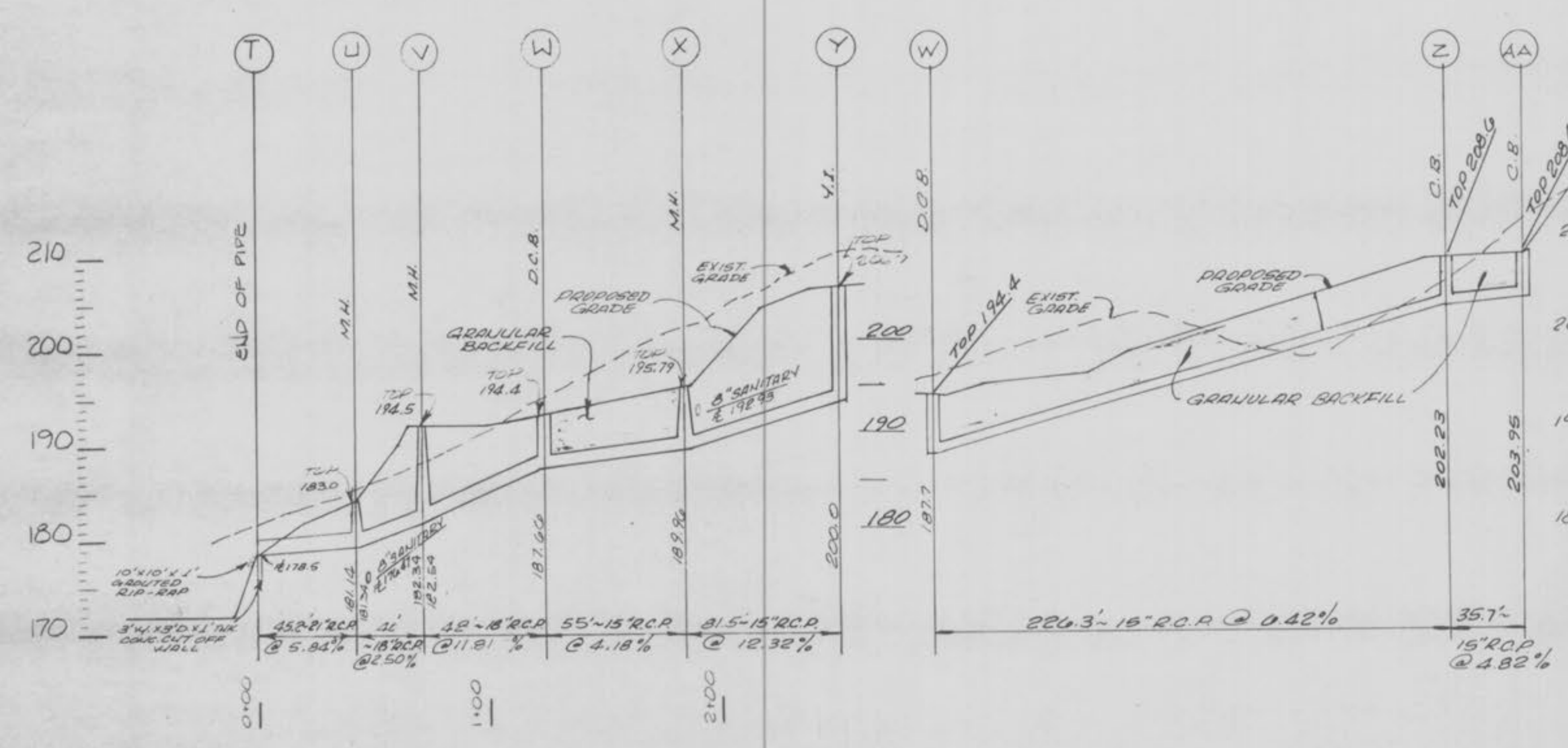
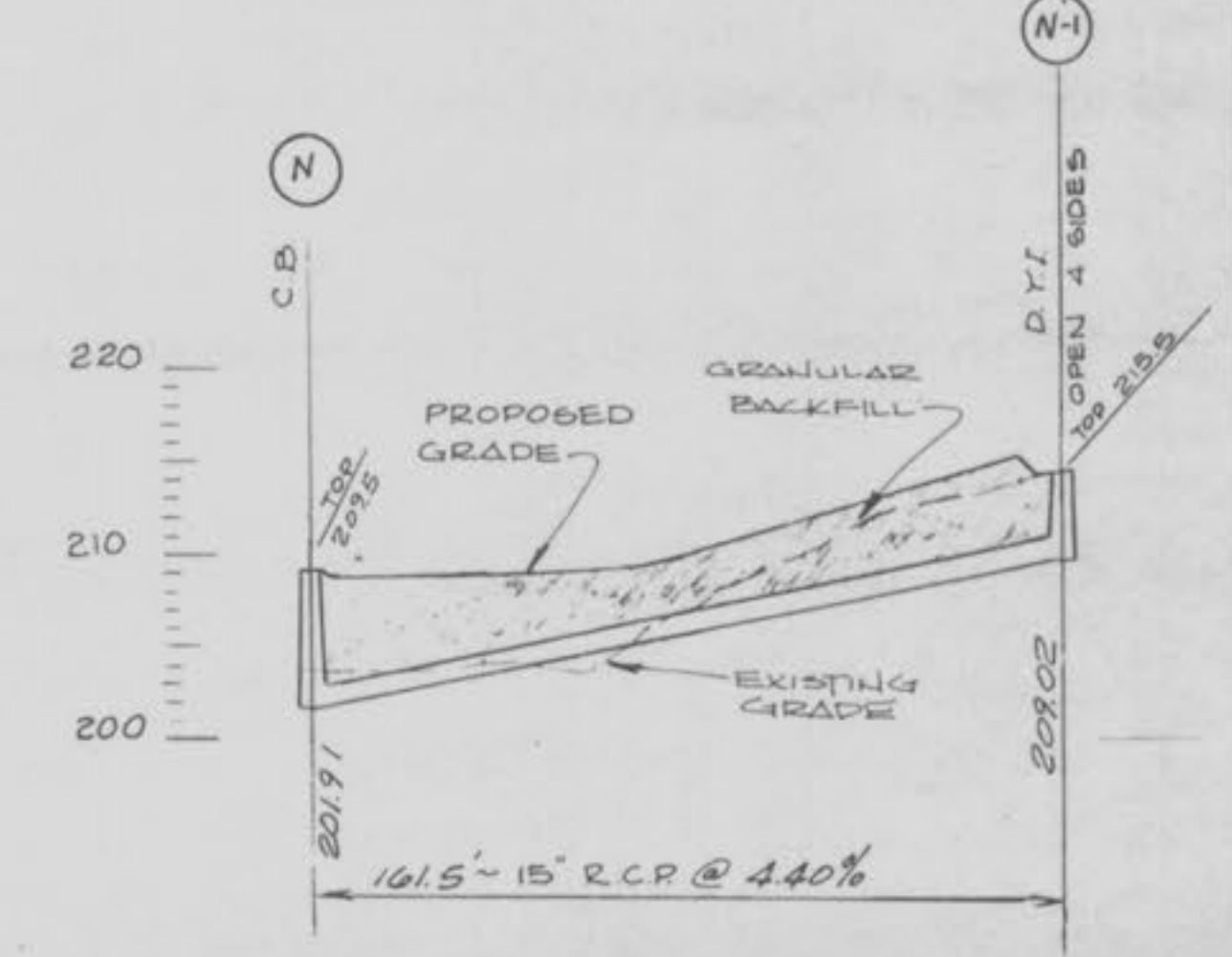
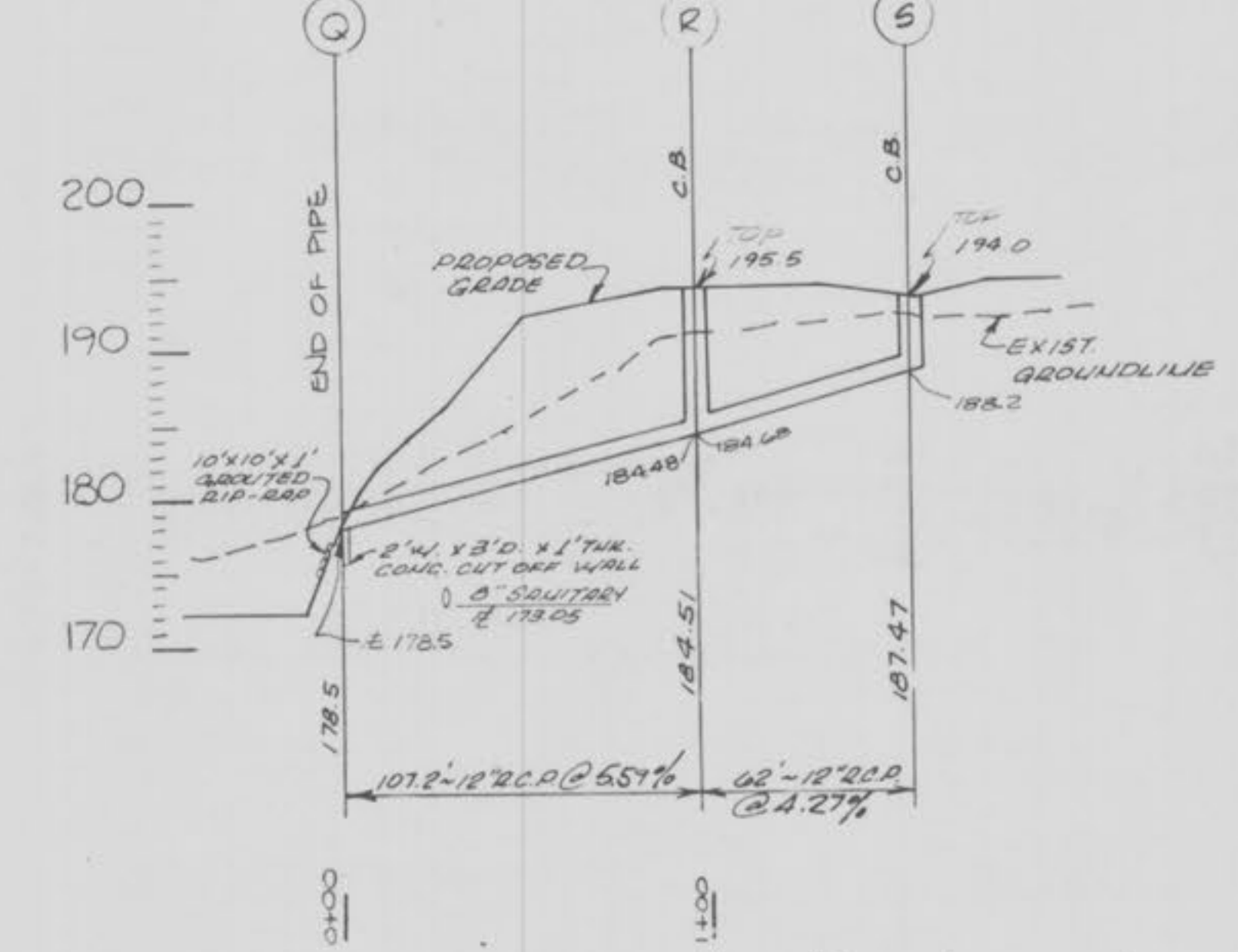
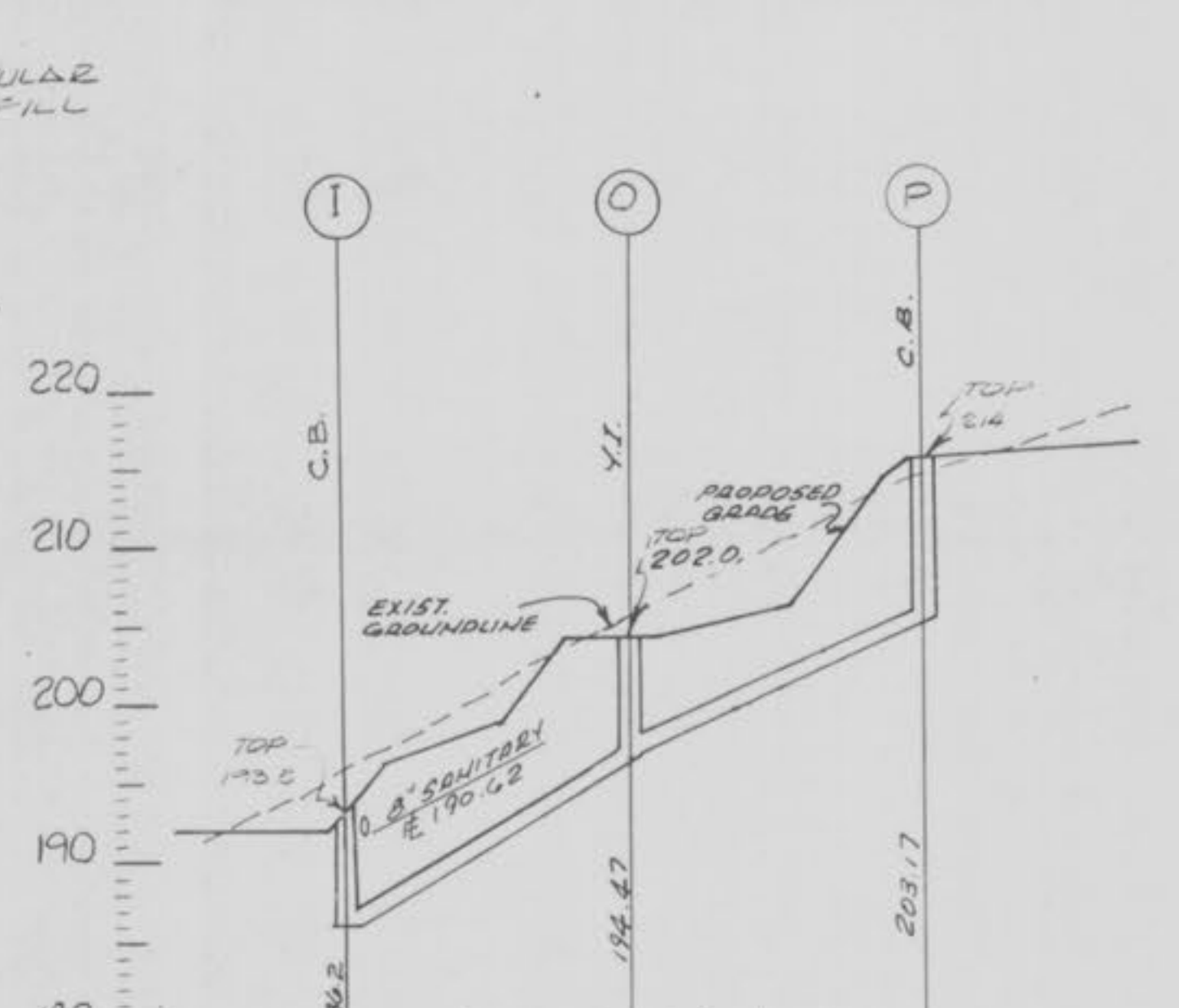
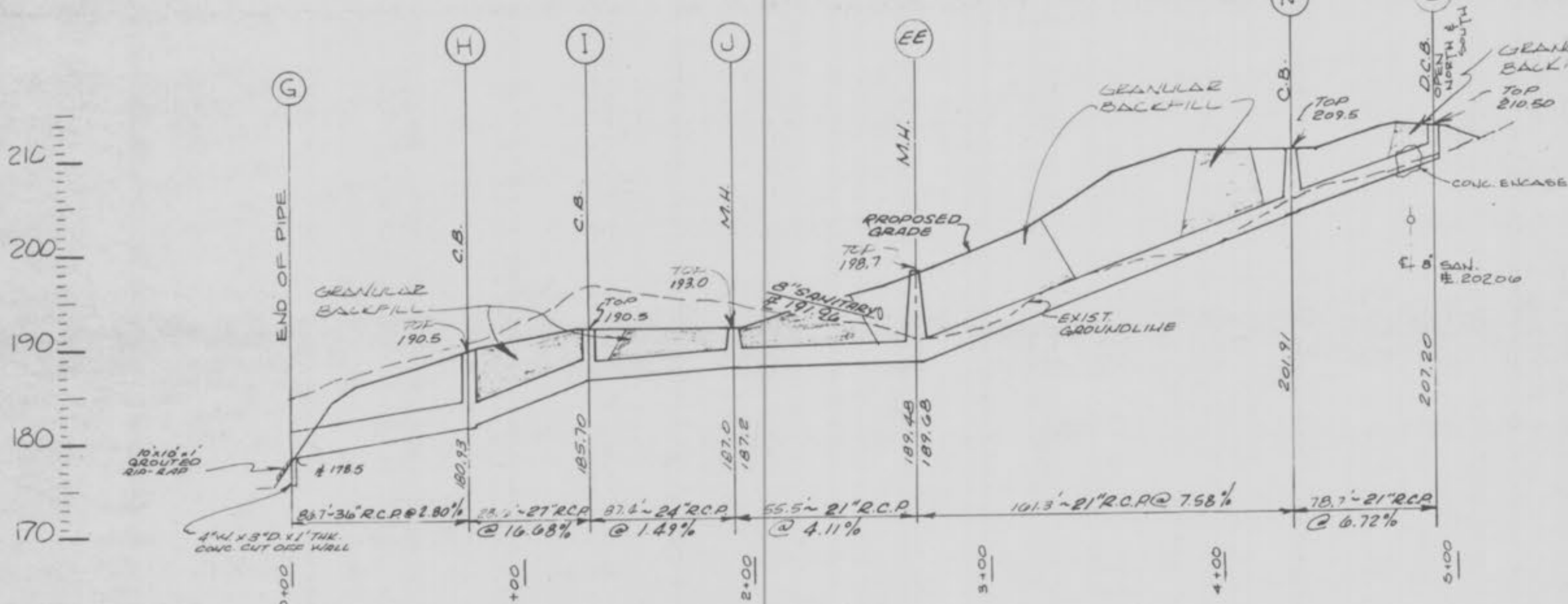
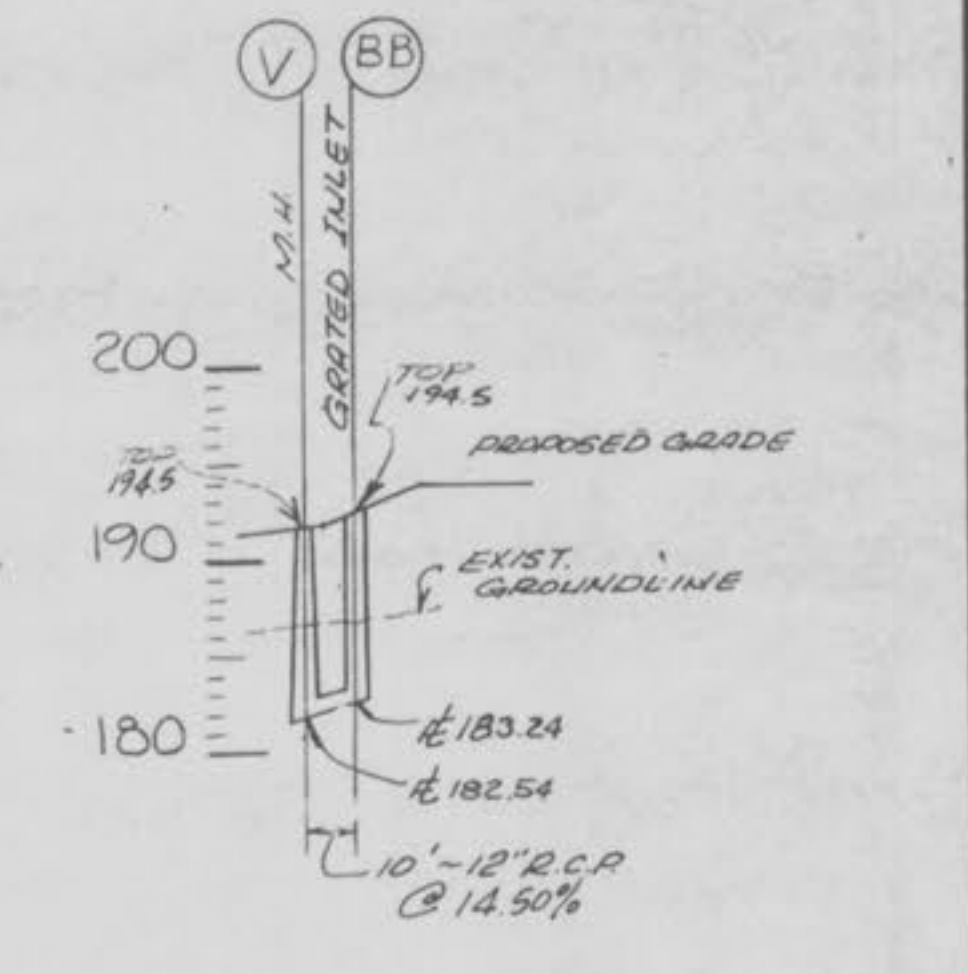
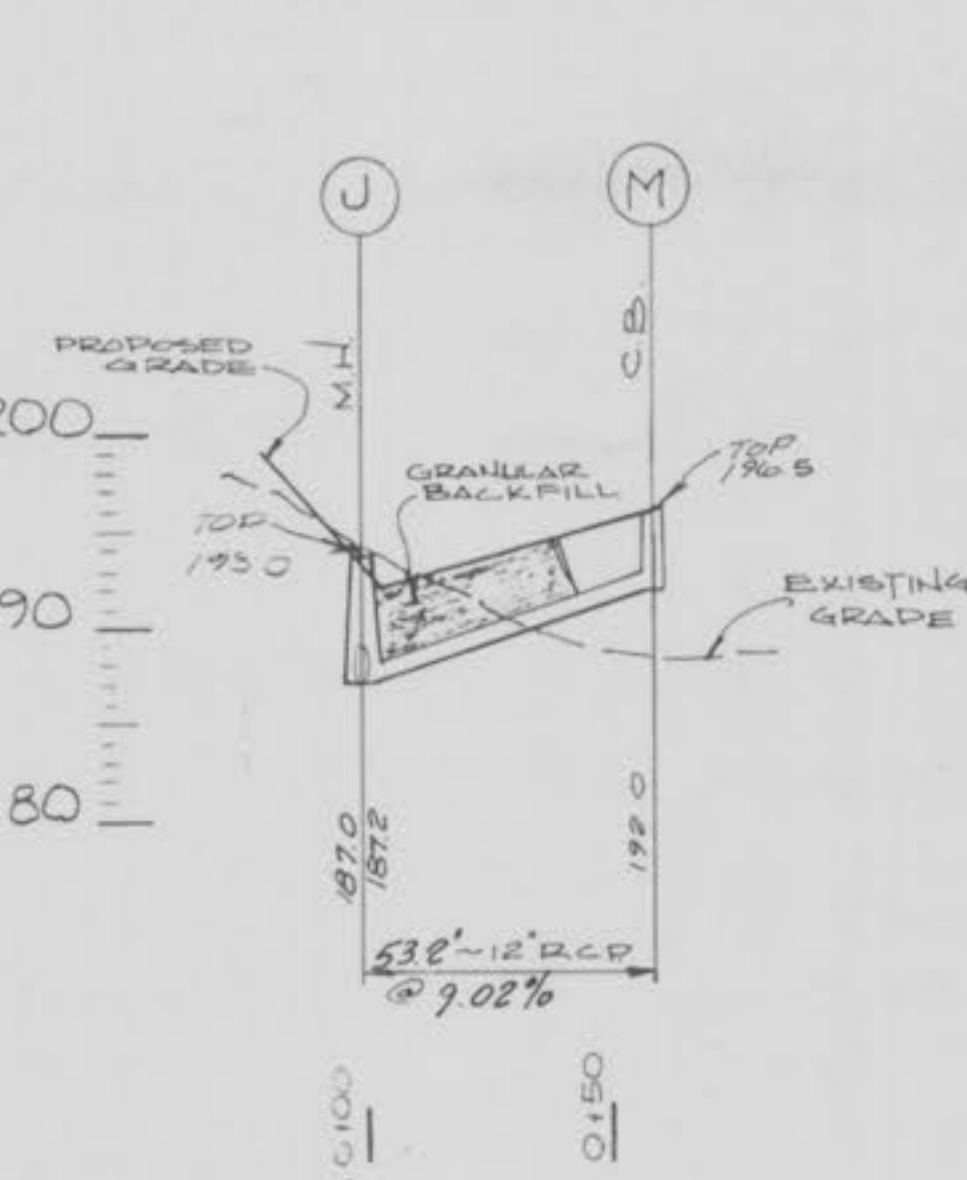
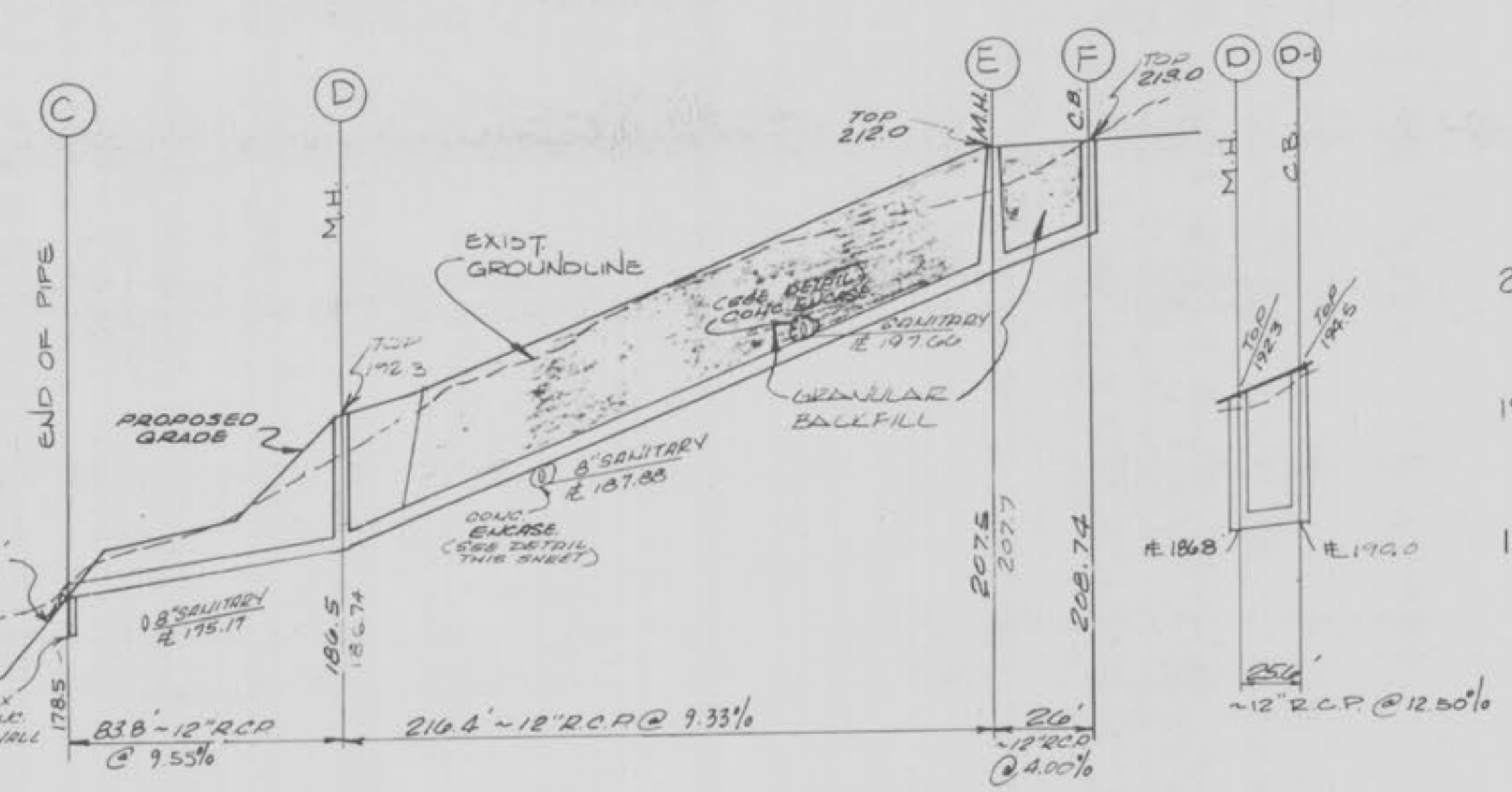
WESTCHESTER
APARTMENT VILLAGE
O'Fallon, Missouri

DEVELOPER: WESTCHESTER PARTNERSHIP

SEWER PROFILES
RECORD DRAWING
DRAWING



NOTES:
 1. DAM TO BE COMPACTED TO 97% MODIFIED PROCTOR SOILS ENGINEER TO TAKE SOIL TESTS TO VERIFY COMPACTON.
 2. DAM TO BE FINISH GRADED, FERTILIZED AND SEEDED WITH RED FESCUE AFTER COMPLETION OF ROUGH GRADING.
 3. SEE SHT. 302-3A FOR INLET 'B' DETAIL, & SHT. 302-4 FOR INLET 'A' DETAIL.



NO.	DATE	DESCRIPTION
1	5-1-84	ADDED GRANULAR FILL BETWEEN SPILLWAYS AND DAM ENCASEMENT
2	11-2-84	ADDED C.C. TO THE REVISED SPILLWAYS
3	11-30-84	REVISED SECTIONS
4	1/8/85	REVISED C.C. THEN DD-1
5	2-5-85	REVISED SPILLWAY DETAILS & PROFILE
6	3-5-85	REVISED SPILLWAY DETAILS & PROFILE
7	5-1-85	REVISED INLET 'A'
8	7-18-85	REVISED SPILLWAY DETAILS & PROFILE
9	7-18-85	REVISED SPILLWAY DETAILS & PROFILE
10	8-14-85	REVISE LINE W-Z AND

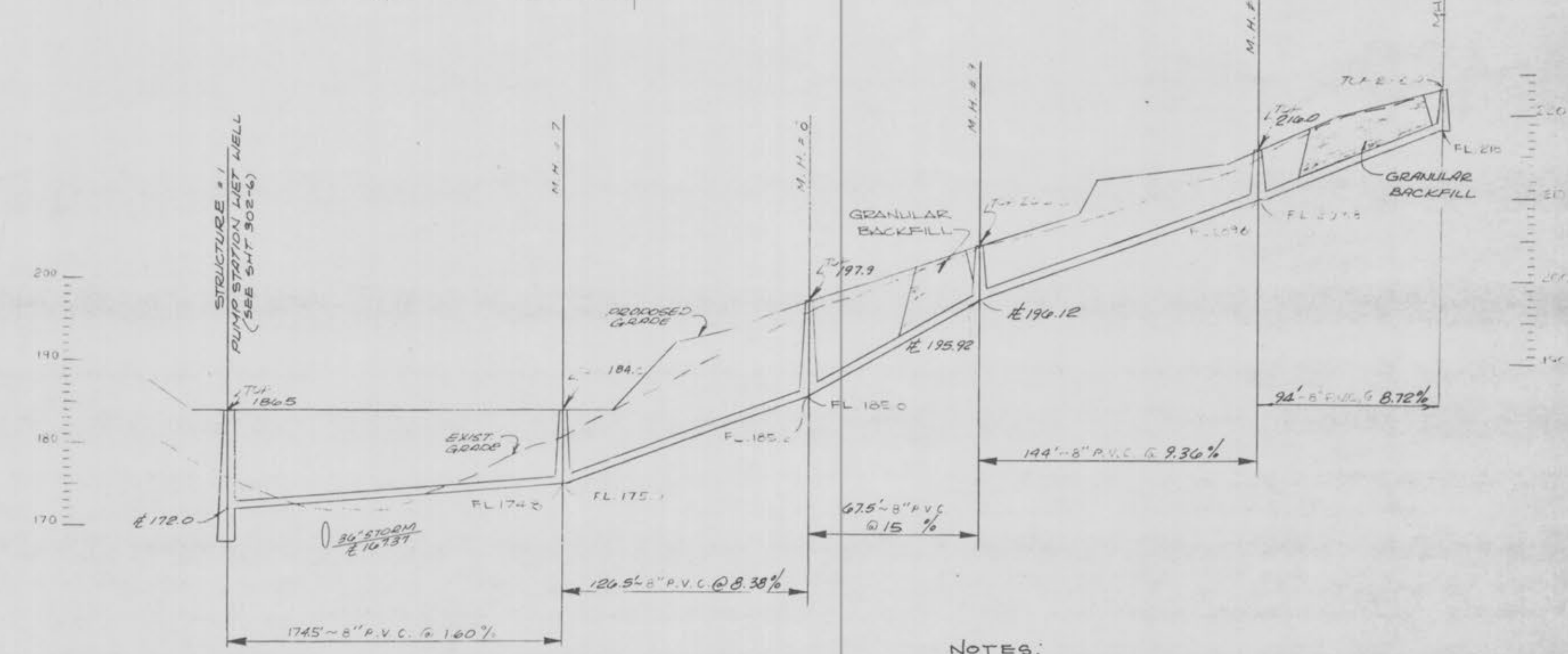
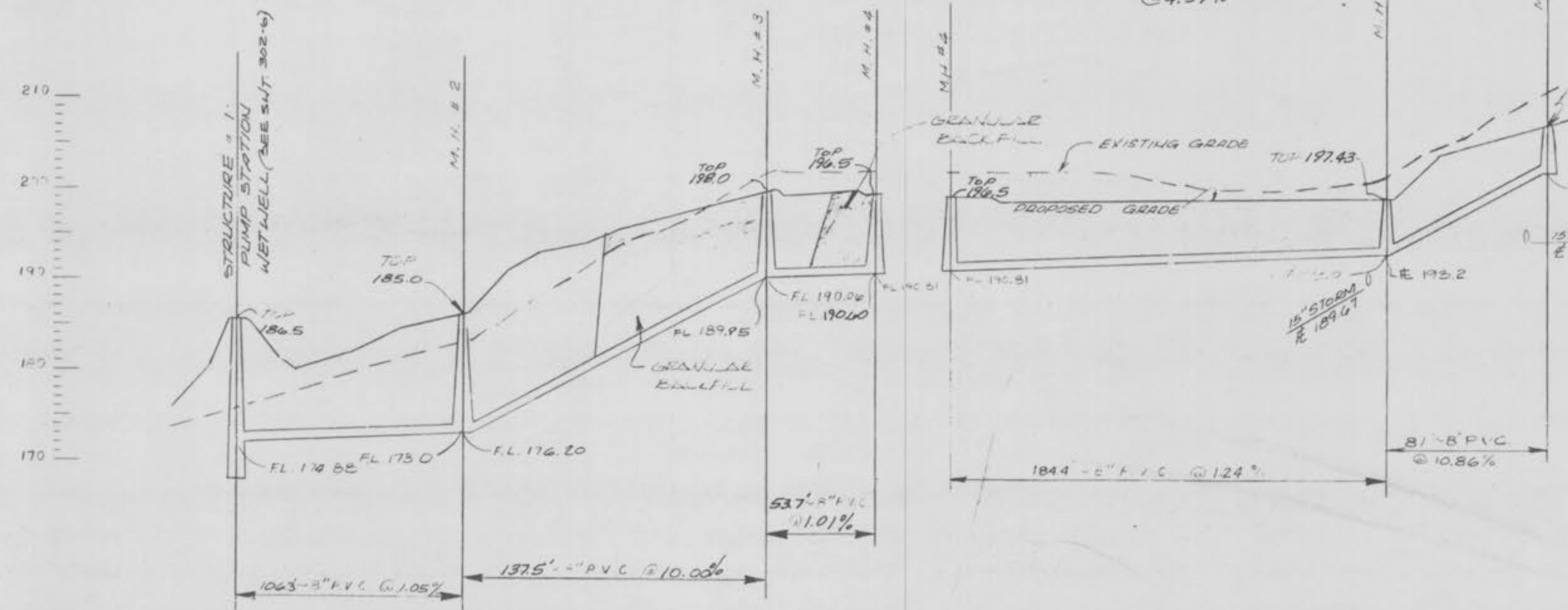
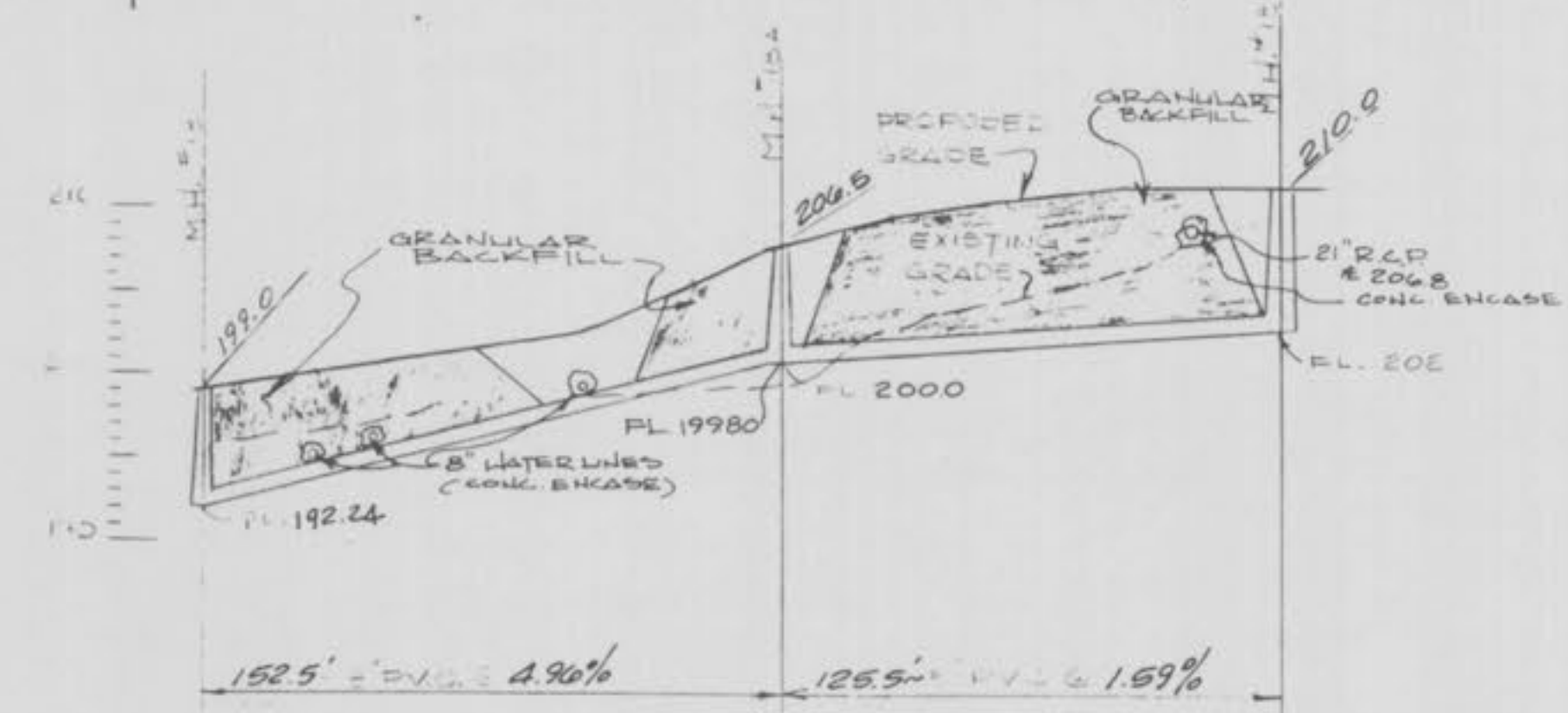
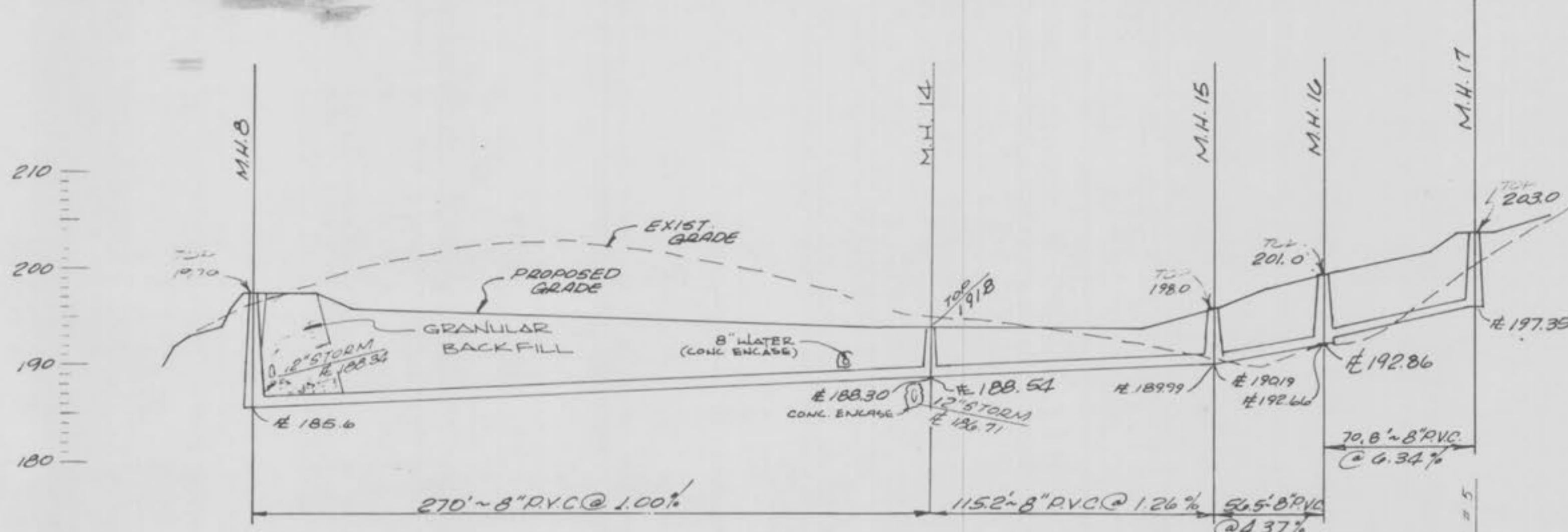
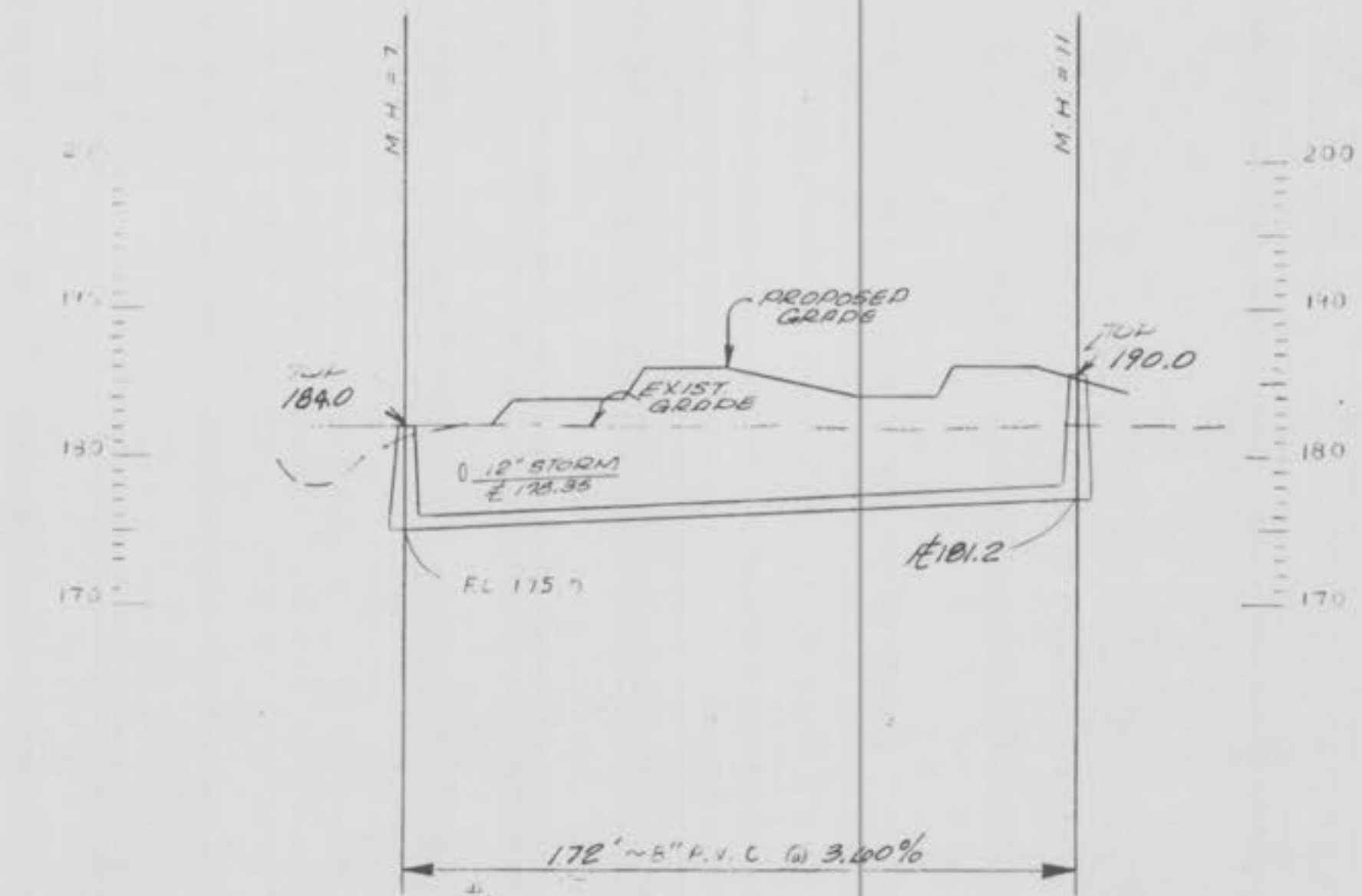
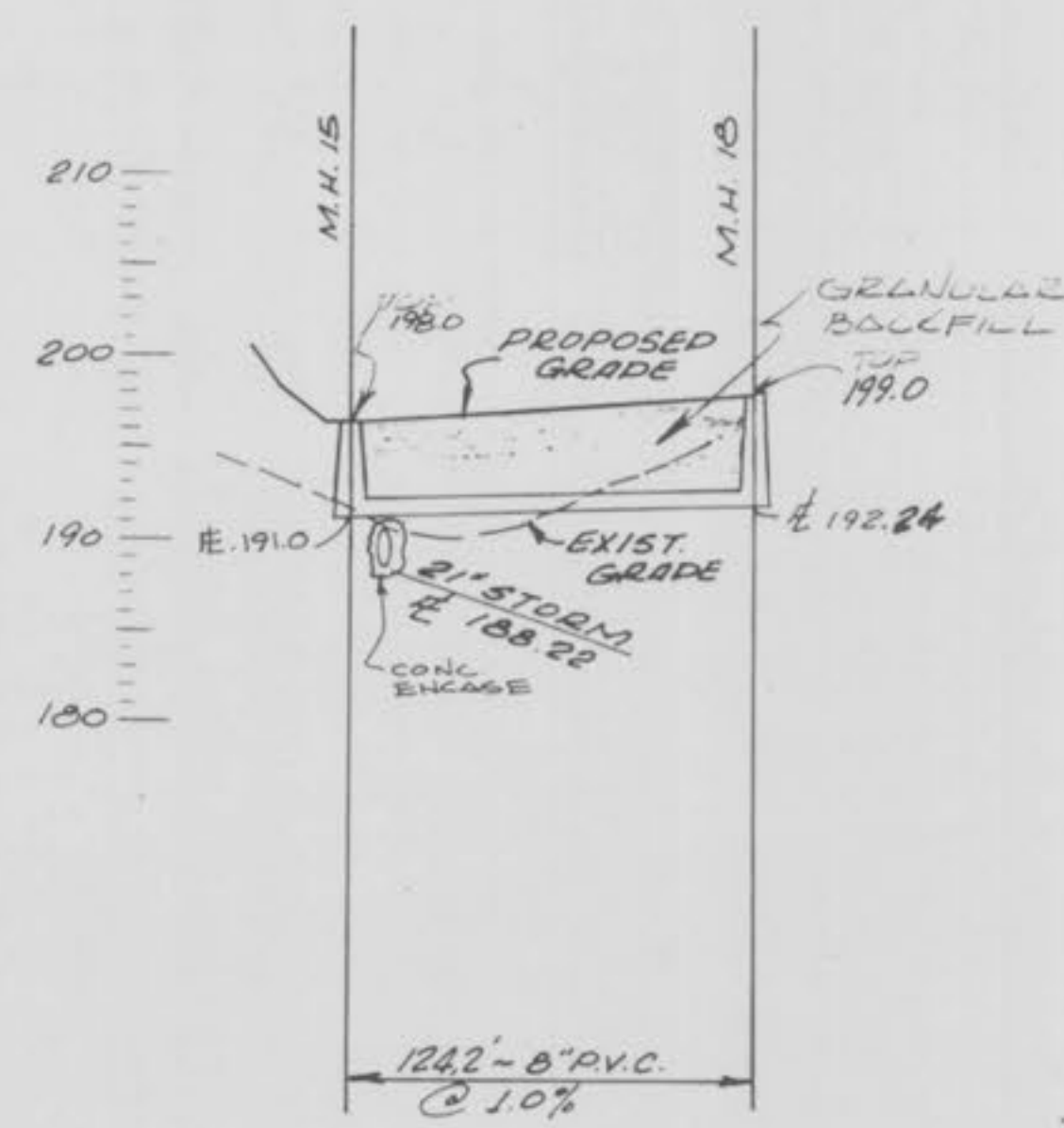
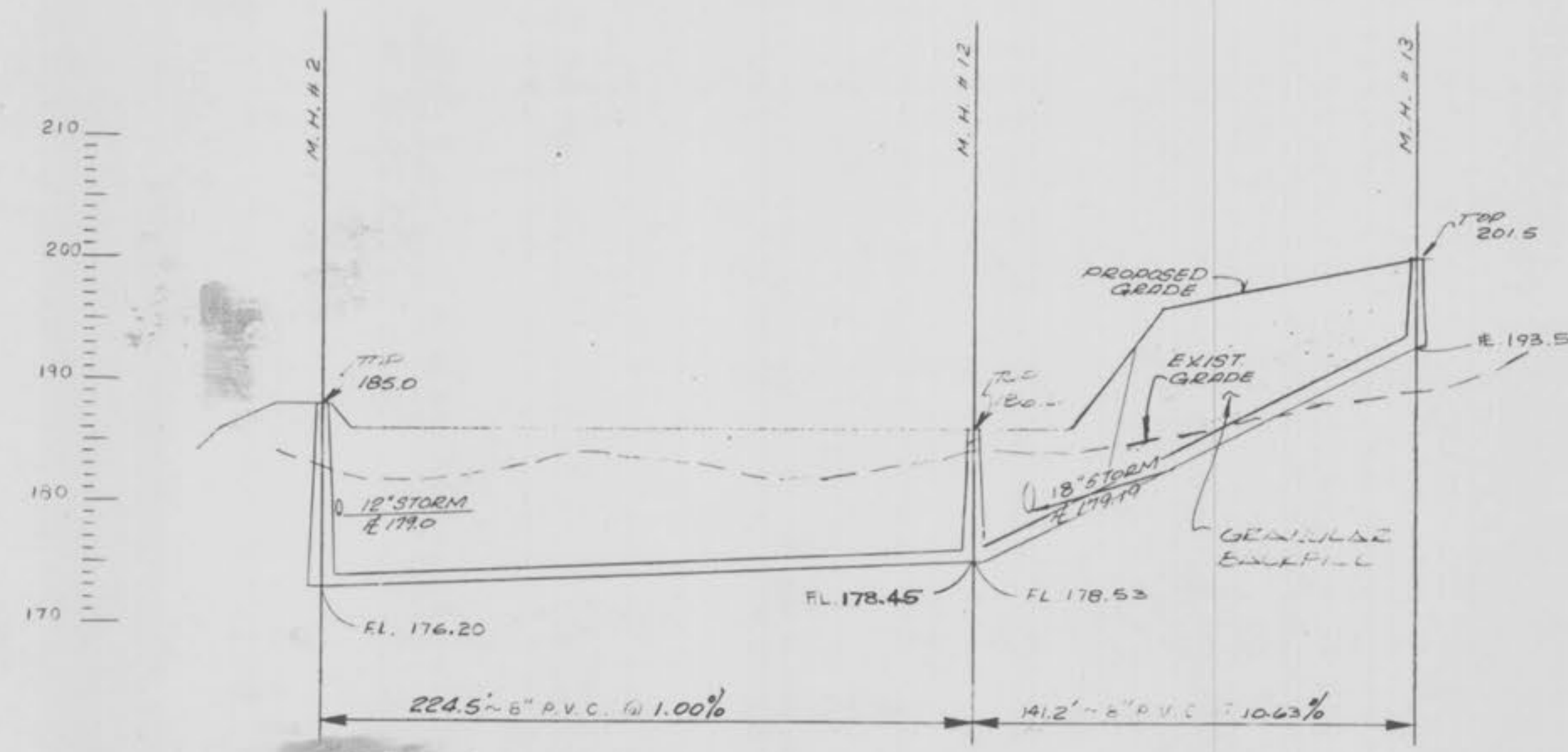
DRAWN	J.S.
JOB NO.	15
TRACED	DATE
CHECKED	SCALE

IKW/WARDLAW ASSOCIATES
 ARCHITECTS • ENGINEERS • PLANNERS
 6 WESTBURY DR. ST. CHARLES MISSOURI



WESTCHESTER APARTMENT VILLAGE
 DEVELOPED BY THE WESTCHESTER PARTNERSHIP

SEWER PROFILE RECORD DRAWING
 DRAWING NO. 1302-17



NOTES:
1. 8" P.V.C. TO BE SDR 35.

REVISIONS:			
1	11-1-84	ADDED PROFILES 18-18	5
2	12-3-84	REV. STRUCT. #1 & FLOWLINES	6
3	2-5-85	M.H. #4	7
4	3-5-85	ADDED GRANULAR FILL	8

DRAWN	JOB NO.	2740
XT	DATE	1-17-84
CHECKED	SCALE	VERT. 1"=10' HORIZ. 1"=40'

IKW / WARDLAW ASSOCIATES
ARCHITECTS · ENGINEERS · PLANNERS
6 WESTBURY DR. ST. CHARLES MISSOURI



WESTCHESTER
APARTMENT VILLAGE
O'Fallon, MO
DEVELOPED BY THE WESTCHESTER PARTNERSHIP

SEWER PROFILES
RECORD DRAWING
DRAWING NO. 130-5A
Westchester A/B