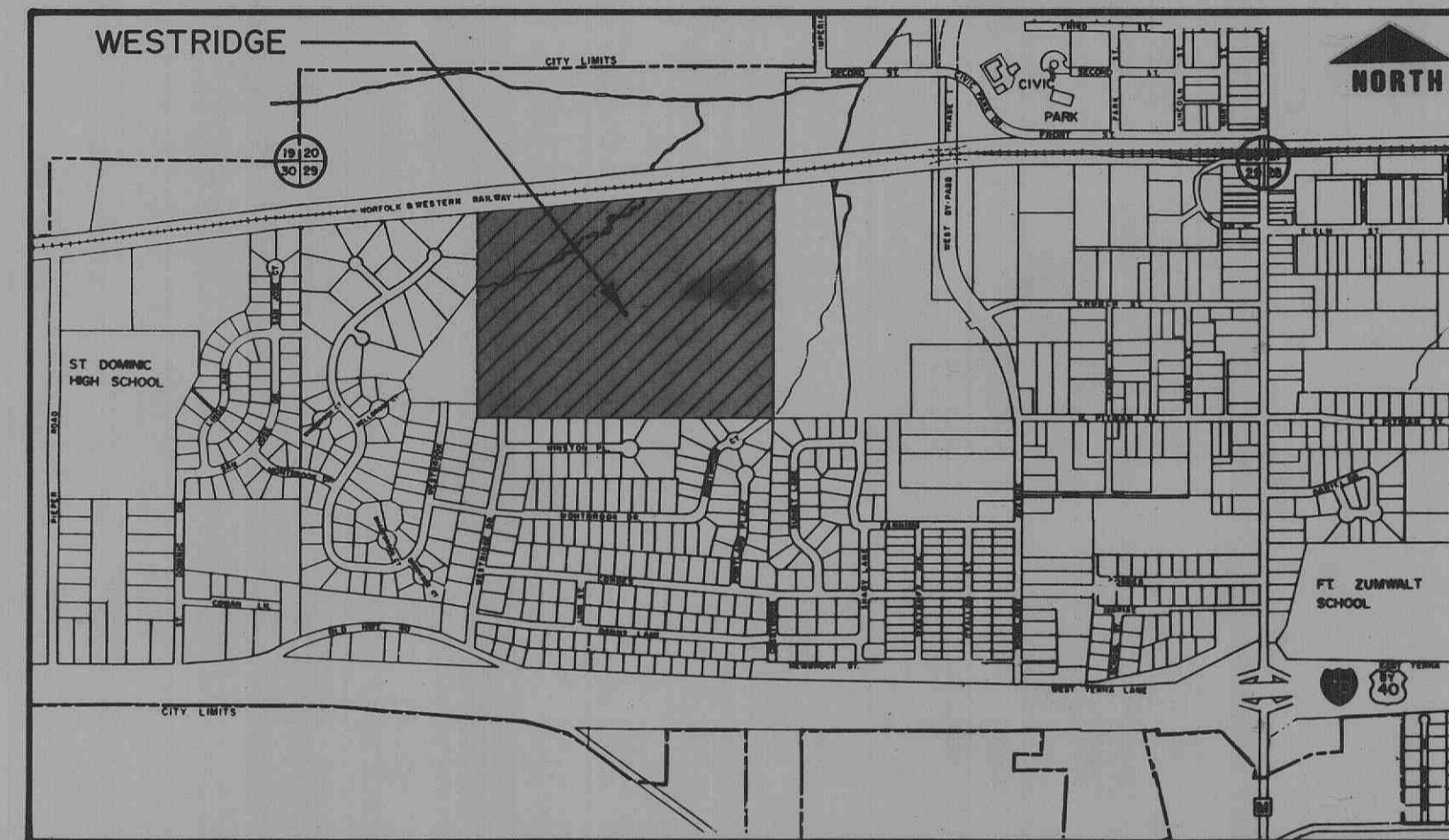


WESTRIDGE

A TRACT OF LAND IN FRACTIONAL SECTION 29, T. 47 N., R. 3 E.
CITY OF O'FALLON, ST. CHARLES COUNTY, MISSOURI



LOCATION MAP
NO SCALE

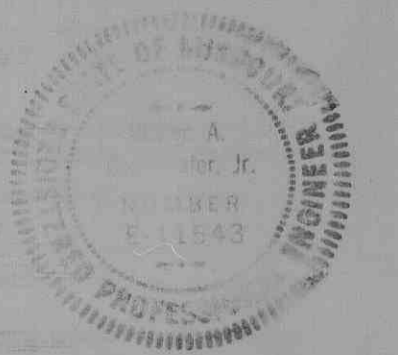
TOTAL AREA OF TRACT
47.72 ACRES
167 LOTS

OWNER - DEVELOPER

R. D. HARRIS CONSTRUCTION CO.
2929 SCARSDALE MANOR
ST. CHARLES, MO. 63301
PHONE: 946-4900

INDEX TO SHEETS

TITLE SHEET	1
PLAT DRAWING	1A
CONSTRUCTION PHASE & UTILITY PLAN	2
SITE & GRADING PLAN	3-4
STREET PLAN & PROFILE	5-11
DRAINAGE AREA MAP	12
STORM SEWER PROFILE	13-14
SANITARY SEWER PROFILE	15-18
STREET & STORM SEWER DETAILS	19-20
SANITARY SEWER DETAILS	21
WATER MAIN DETAILS	22

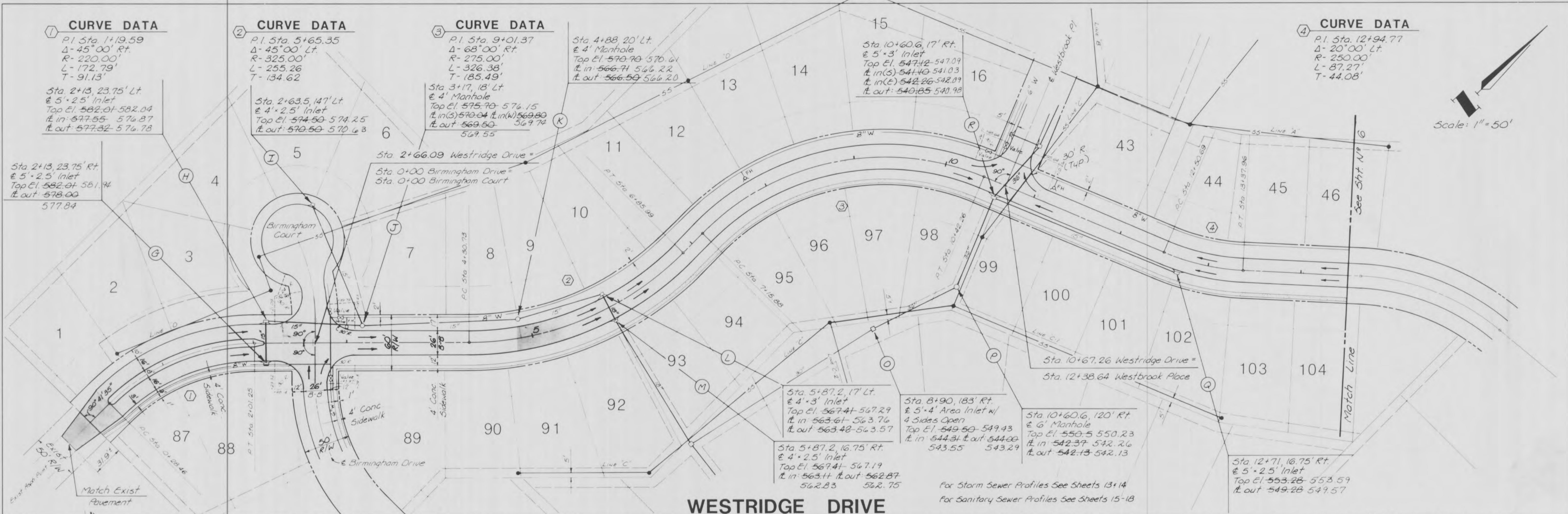
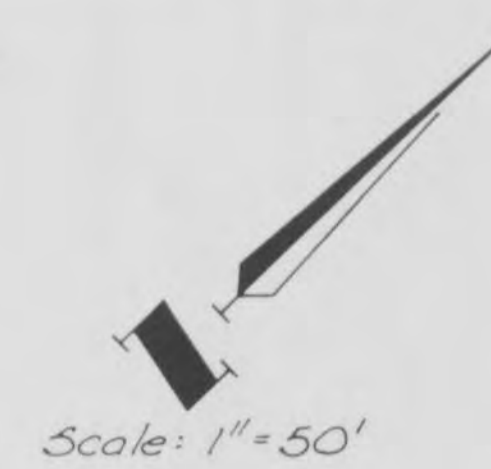


GBA

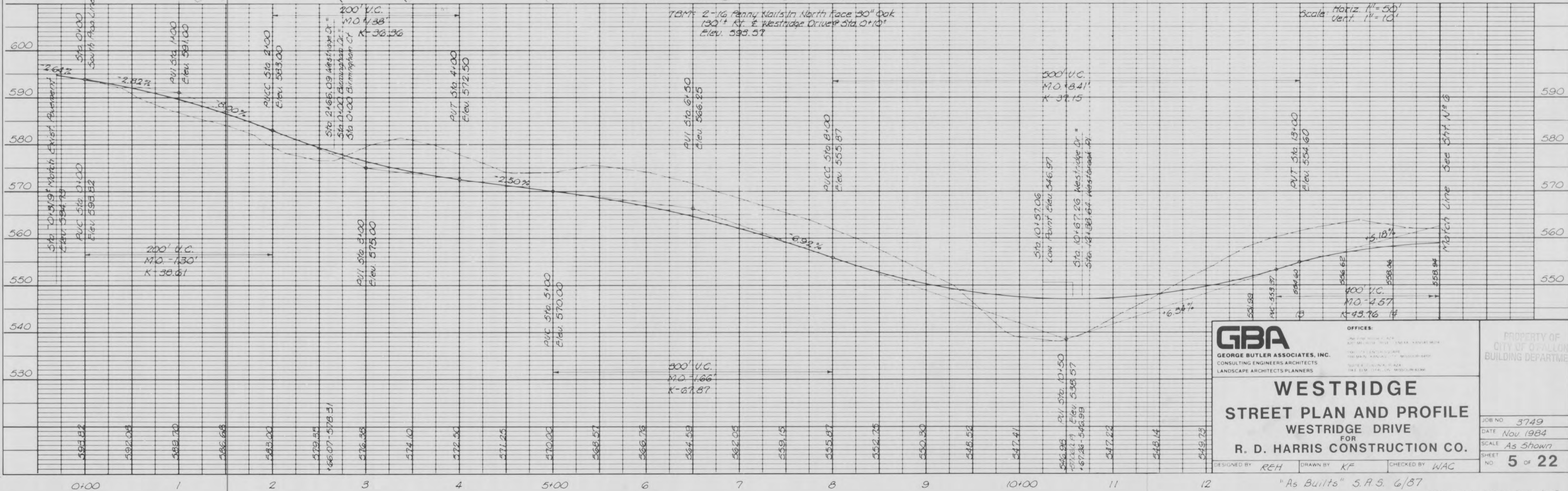
GEORGE BUTLER ASSOCIATES, INC.
Engineers / Architects / Landscape Architects / Planners
One Pine Ridge Plaza / 8207 Melrose Drive / Lenexa, Kansas 66214
Suite 1100 City Center Square / 1100 Main Street / Kansas City, Missouri 64105
The Enterprise Building / 6300 Enterprise Road / Kansas City, Missouri 64120
114 East Elm Street / Suite 4 / O'Fallon, Missouri 63366

PHASE I & II "AS-BUILTS" 11/86

PROPERTY OF
CITY OF O'FALLON
BUILDING DEPARTMENT



WESTRIDGE DRIVE



GBA
 GEORGE BUTLER ASSOCIATES, INC.
 CONSULTING ENGINEERS ARCHITECTS
 LANDSCAPE ARCHITECTS PLANNERS

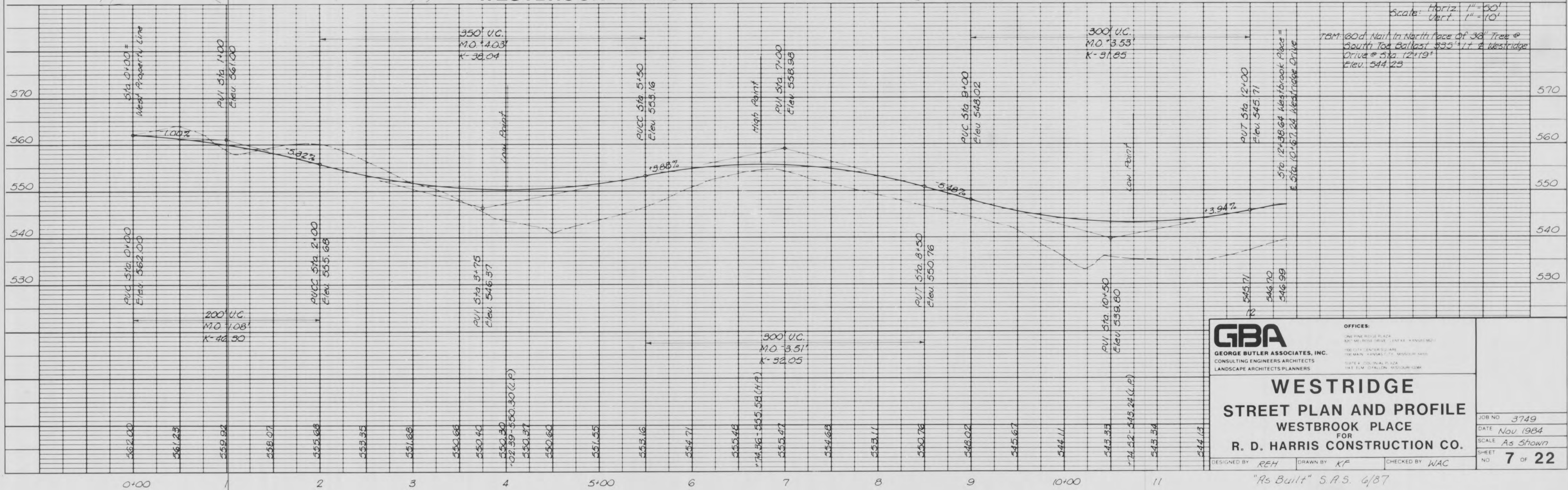
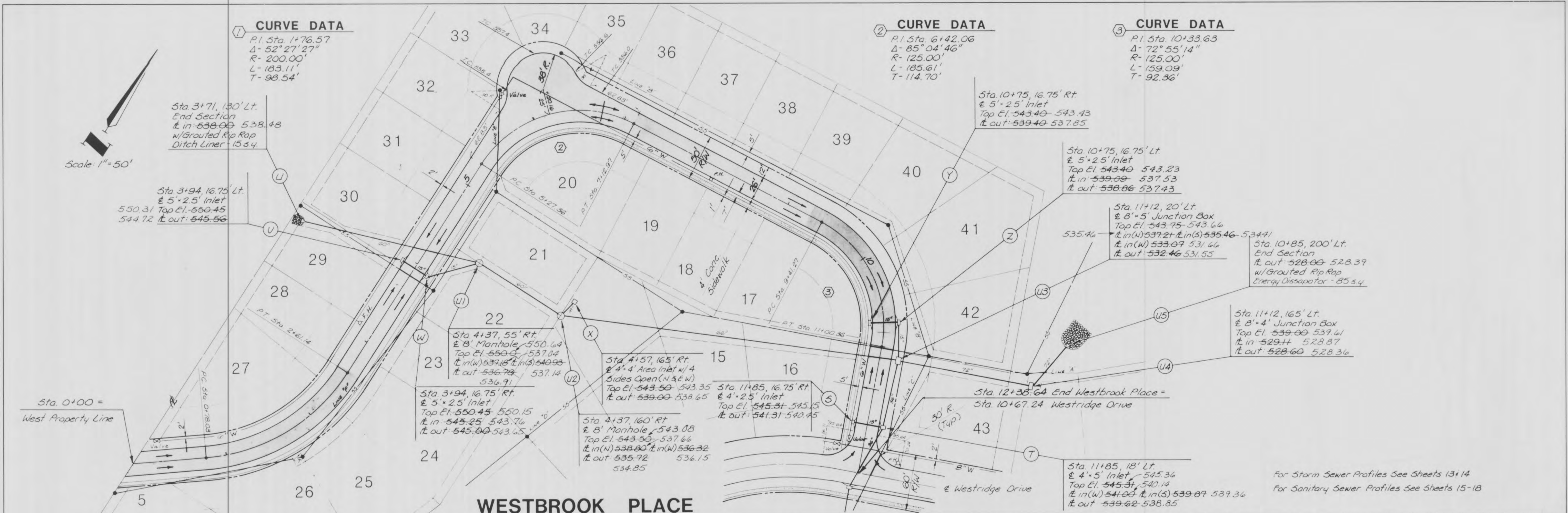
WESTRIDGE STREET PLAN AND PROFILE
 FOR
R. D. HARRIS CONSTRUCTION CO.

DESIGNED BY REH DRAWN BY KF CHECKED BY WAG

JOB NO. 3749
 DATE Nov 1984
 SCALE As Shown
 SHEET NO. 5 OF 22

PROPERTY OF CITY OF FALLON BUILDING DEPARTMENT

"As Built" S.R.S. 6/87
 WESTRIDGE PHASE I+II AS-BUILT



GBA
 GEORGE BUTLER ASSOCIATES, INC.
 CONSULTING ENGINEERS ARCHITECTS
 LANDSCAPE ARCHITECTS PLANNERS

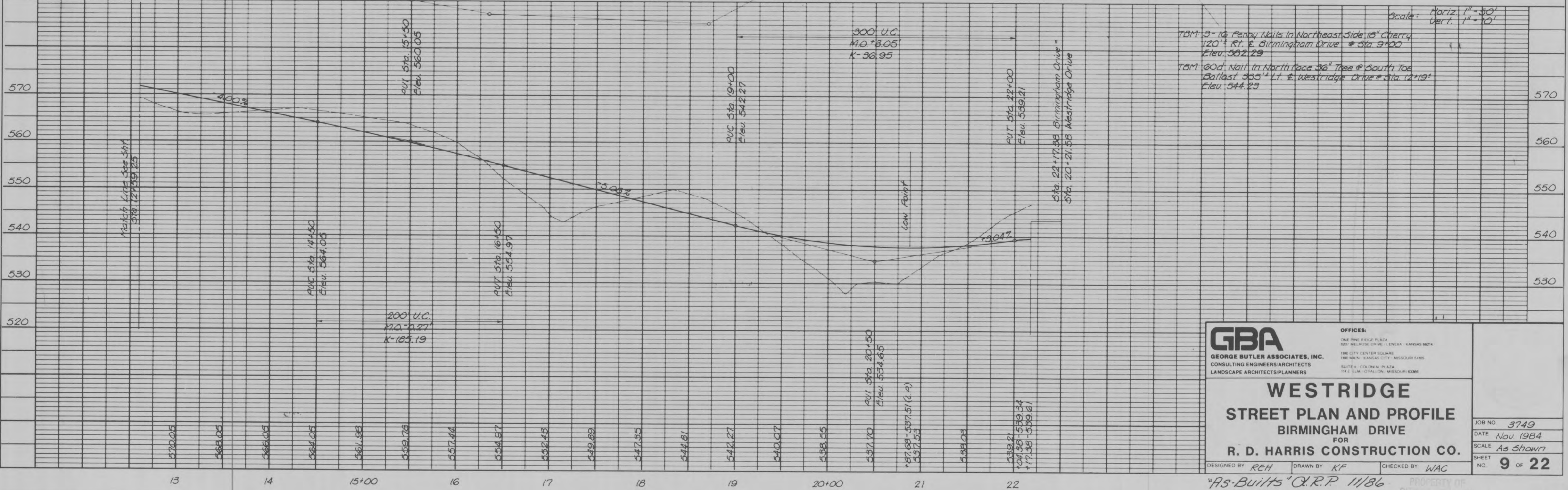
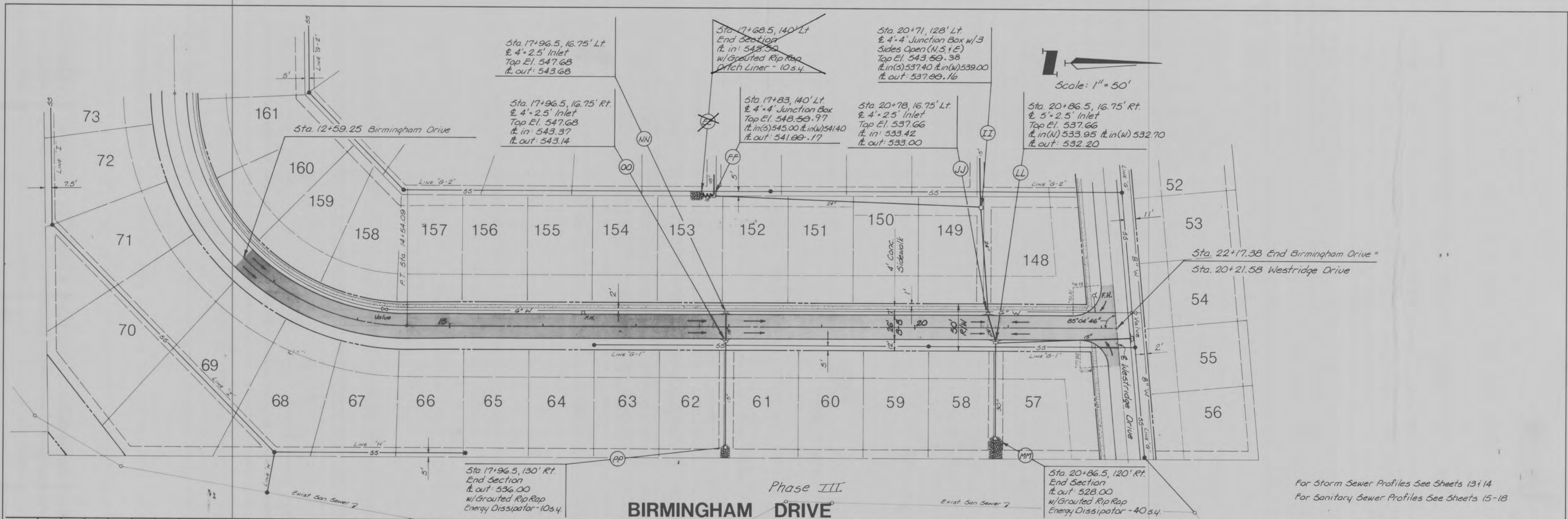
WESTRIDGE
 STREET PLAN AND PROFILE
 WESTBROOK PLACE
 FOR
 R. D. HARRIS CONSTRUCTION CO.

OFFICES:
 ONE KING RIDGE PLACE
 SUITE 100 WEST DRIVE
 LINCOLN, MISSOURI 64501
 ONE CITY CENTER SQUARE
 THE BANK BUILDING, 17 W. MISSOURI AVENUE
 SUITE 400 JOURNAL PLACE
 THE ELM BUILDING, MISSOURI COMMERCE

JOB NO. 3749
 DATE Nov 1984
 SCALE As Shown
 SHEET NO. 7 OF 22

DESIGNED BY REH DRAWN BY KP CHECKED BY WAC

"As Built" S.A.S. 6/87



GBA
GEORGE BUTLER ASSOCIATES, INC.
CONSULTING ENGINEERS/ARCHITECTS
LANDSCAPE ARCHITECTS/PLANNERS

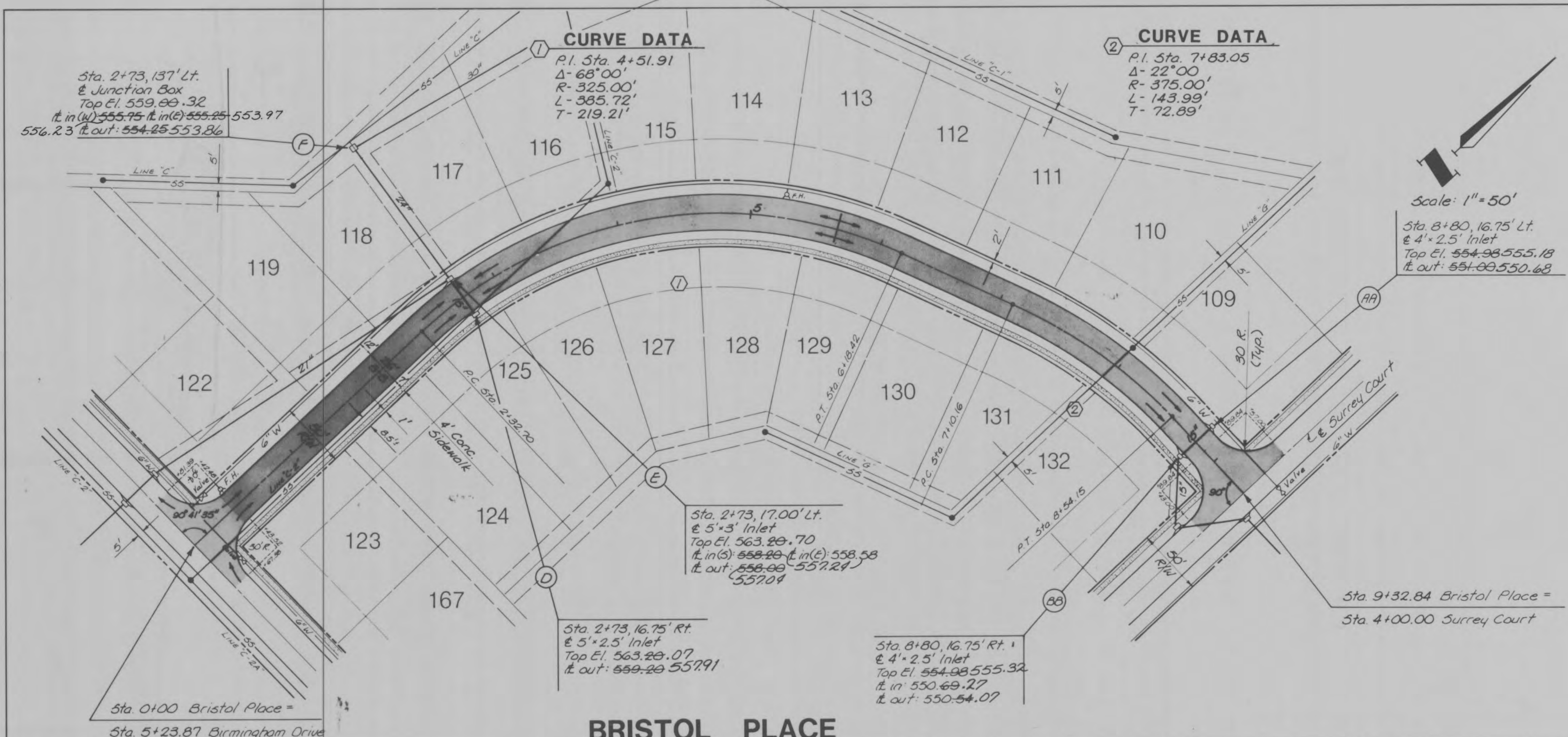
OFFICES:
ONE PINE RIDGE PLAZA
800 MELROSE DRIVE, LENEXA, KANSAS 66214
ONE CITY CENTER SQUARE
100 MAIN, KANSAS CITY, MISSOURI 64105
SUITE 4, COLONIAL PLAZA
112 E. JEFFERSON, MISSOURI 63102

**WESTRIDGE
STREET PLAN AND PROFILE
BIRMINGHAM DRIVE
FOR
R. D. HARRIS CONSTRUCTION CO.**

DESIGNED BY REH DRAWN BY KF CHECKED BY WAC

JOB NO. 3749
DATE Nov. 1984
SCALE As Shown
SHEET NO. 9 OF 22

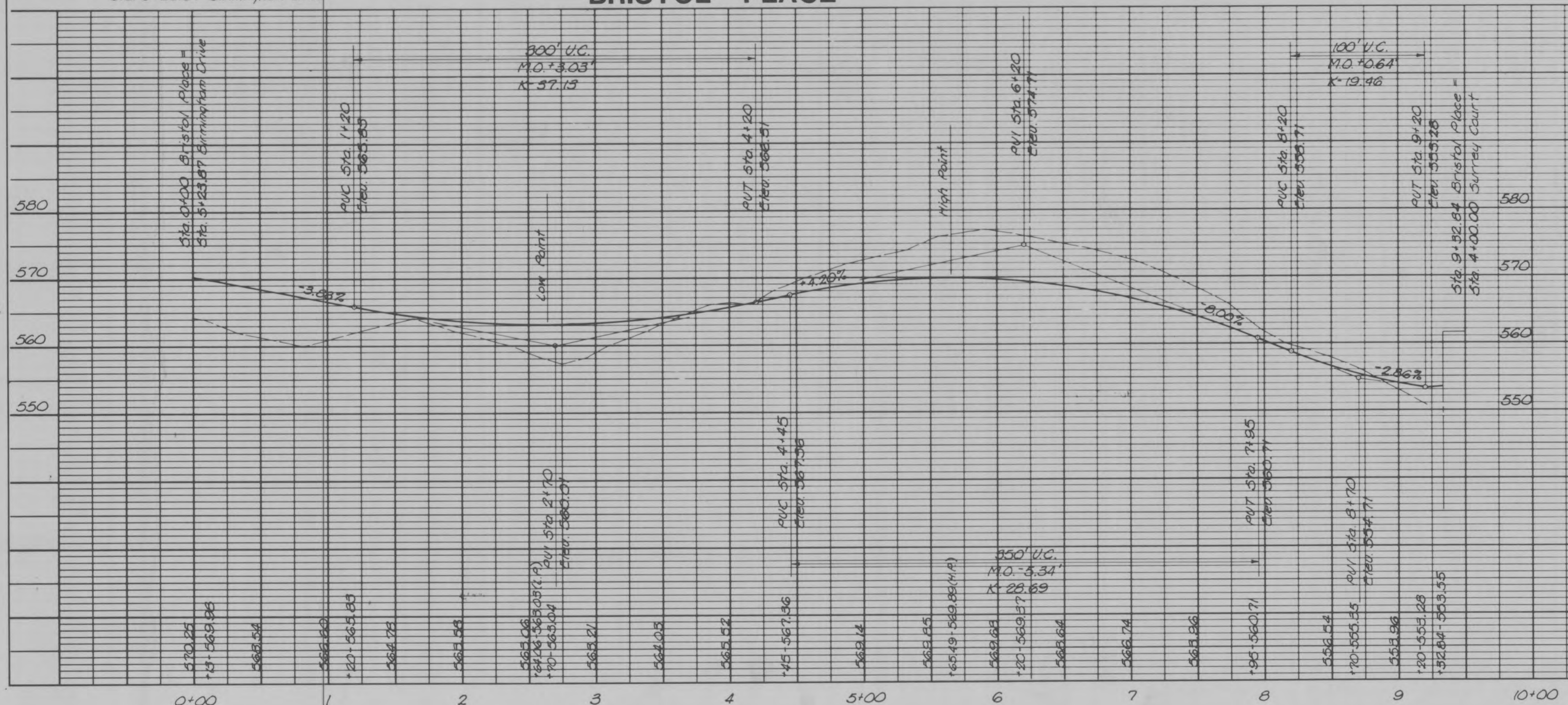
PROPERTY OF
R. D. HARRIS CONSTRUCTION CO.
BUILDING DEPARTMENT
WESTRIDGE, PHASE III A5-BLTS



Scale: 1" = 50'

For Storm Sewer Profiles See Sheets 13-14
 For Sanitary Sewer Profiles See Sheets 15-18

BRISTOL PLACE



Scale: Horiz. 1" = 50'
 Vert. 1" = 10'

10M: 2-16 Penny Nails in North Side 50" Oak
 30' Rt. & Birmingham Drive @ Sta. 4+85
 Elev. 567.76

GBA
 GEORGE BUTLER ASSOCIATES, INC.
 CONSULTING ENGINEERS/ARCHITECTS
 LANDSCAPE ARCHITECTS/PLANNERS

OFFICES:
 ONE PINE RIDGE PLAZA
 8201 MELROSE DRIVE - LENEXA - KANSAS 66157
 180 CITY CENTER SQUARE
 100 MAIN - KANSAS CITY - MISSOURI 64105
 SUITE 4 - COLONIAL PLAZA
 114 ELM - OFALLON - MISSOURI 63456

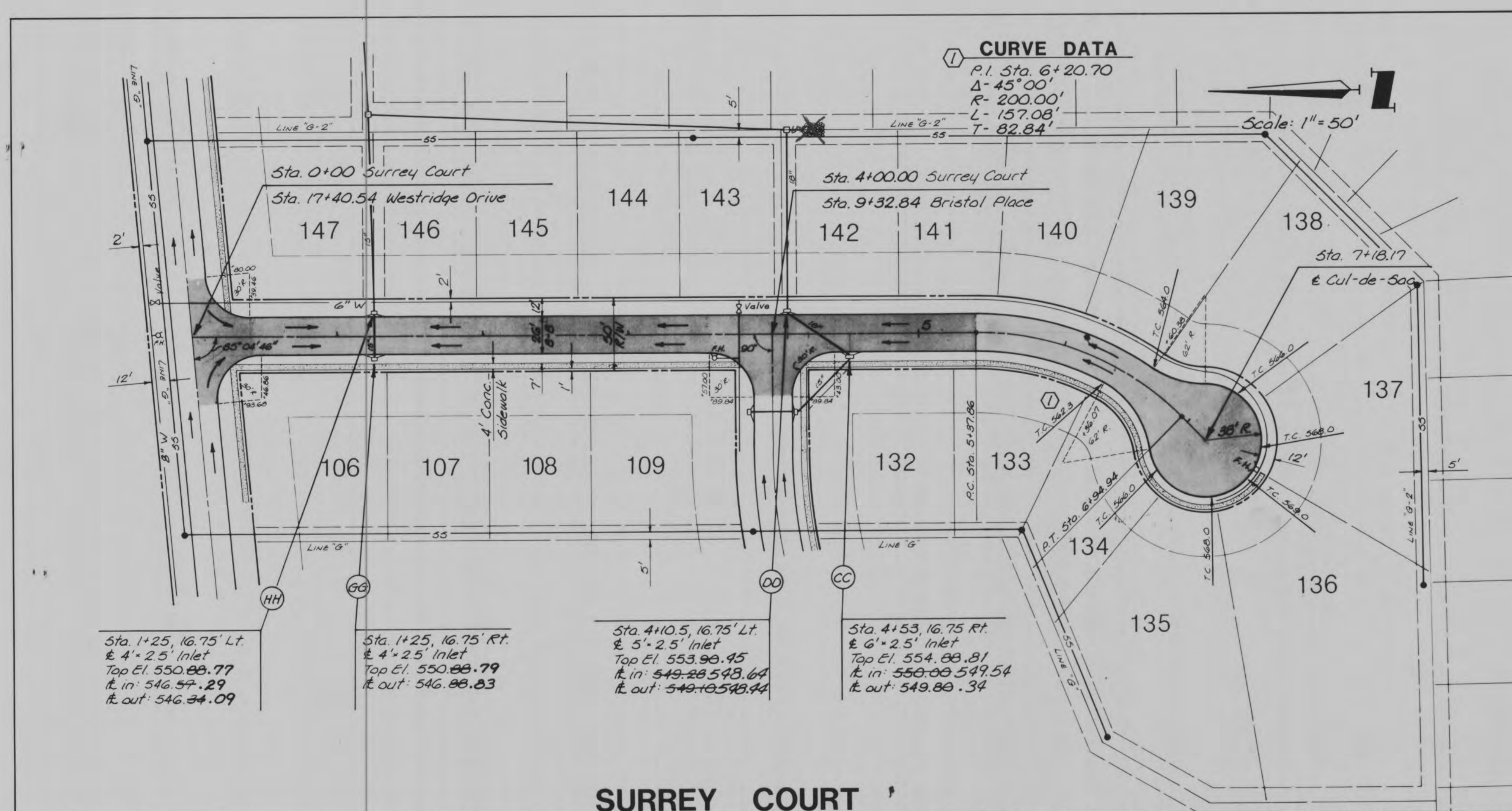
PROPERTY OF CITY OF OFALLON BUILDING DEPARTMENT

WESTRIDGE
 STREET PLAN AND PROFILE
 BRISTOL PLACE
 FOR
 R. D. HARRIS CONSTRUCTION CO.

DESIGNED BY: REH DRAWN BY: KF CHECKED BY: WAC

JOB NO. 3749
 DATE Nov 1984
 SCALE As Shown
 SHEET NO. 10 OF 22

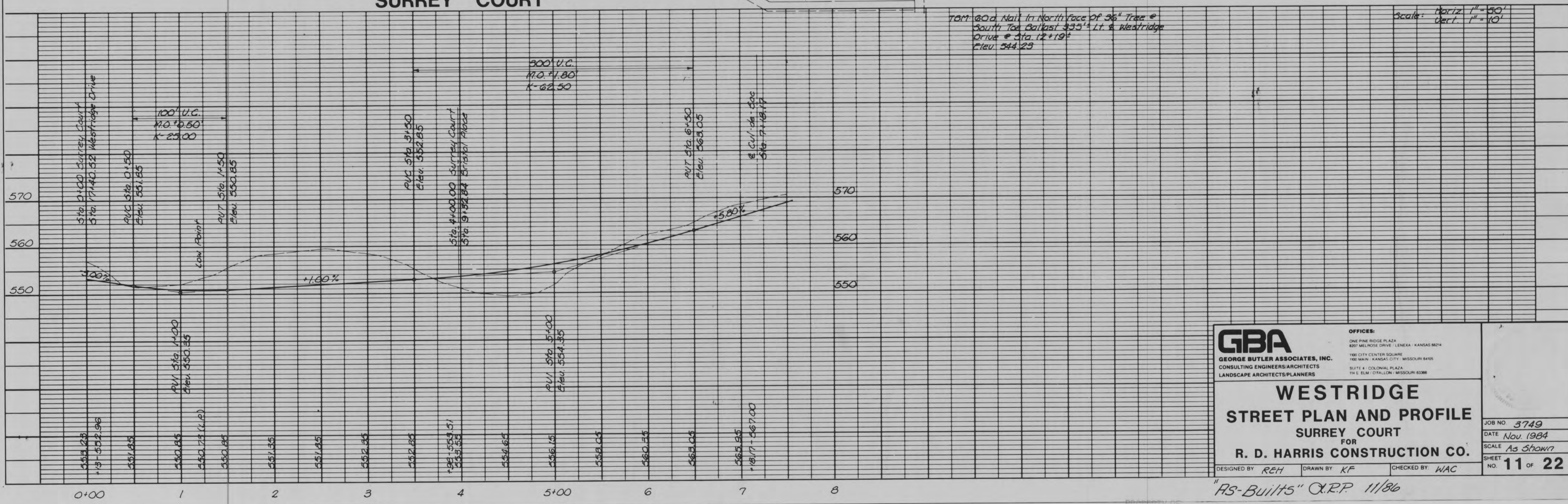
"As-Built" C.R.P. 11/86



- GENERAL NOTES**
1. THE VERIFICATION OF THE LOCATION OF ALL UNDERGROUND UTILITIES, EITHER SHOWN OR NOT SHOWN, SHALL BE THE RESPONSIBILITY OF THE CONTRACTOR, AND SHALL NOTIFY ALL UTILITY COMPANIES PRIOR TO CONSTRUCTION TO HAVE EXISTING UTILITIES LOCATED PRIOR TO GRADING OR CONSTRUCTION IMPROVEMENTS.
 2. WATER, GAS AND OTHER UNDERGROUND UTILITIES SHALL NOT CONFLICT WITH THE DEPTH OR HORIZONTAL LOCATION OF EXISTING AND PROPOSED SANITARY AND STORM SEWERS, INCLUDING HOUSE LATERALS.
 3. ALL P.V.C. WATER PIPE SHALL BE CLASS 200 OR SDR-21. MAXIMUM DEFLECTION ON WATER LINES SHALL NOT EXCEED 5". IF GREATER THAN 5" IS REQUIRED, THEN FITTINGS WILL BE USED.
 4. ALL P.V.C. SANITARY SEWER PIPE TO BE SDR-35 CONFORMING TO ASTM-D-3034 WITH A CLASS B BEDDING. (SEE SHEET NO. 21)
 5. ALL STORM SEWER PIPES WITHIN PROPOSED RIGHT OF WAY TO BE REINFORCED CONCRETE PIPE (ASTM C76 CLASS III MINIMUM UNLESS OTHERWISE SHOWN ON THE PLANS.)
 6. STORM OR SANITARY LINES CONSTRUCTED ABOVE THE ORIGINAL GROUND LINE SHALL HAVE THE FILL UNDER THE LINES COMPACTED TO 90% MAXIMUM DRY DENSITY AS DETERMINED BY MODIFIED AASHO COMPACTION TEST (CURRENT A.S.T.M. SPECIFICATION D-1557).
 7. ALL TRENCH BACKFILL BELOW PAVEMENT FOR STORM, WATER OR SANITARY LINES SHALL BE GRANULAR MATERIAL COMPACTED TO A MINIMUM OF 95% AS DETERMINED BY STANDARD PROCTOR TEST.
 8. STORM SEWERS 18" AND SMALLER SHALL BE A.S.T.M. C-14 UNLESS OTHERWISE SHOWN ON PLANS OR SPECIFIED HEREIN WITH TYPE "B" BEDDING WHEN IN ROCK (SEE SHEET NO. 21).
 9. STORM SEWERS 21" AND LARGER SHALL BE A.S.T.M. C-76 CLASS III MINIMUM, UNLESS OTHERWISE SHOWN ON THE PLANS WITH TYPE "B" BEDDING WHEN IN ROCK (SEE SHEET NO. 21).
 10. ALL CURB INLETS TO HAVE FRONT OF INLET TWO FEET BEHIND THE CURB.
 11. THE MINIMUM ALLOWABLE VERTICAL DISTANCE FROM THE LOWEST POINT OF A BASEMENT TO THE FLOWLINE OF A SANITARY SEWER AT THE WYE LOCATION SHALL NOT BE LESS THAN THE DIAMETER OF THE MAIN SEWER PLUS 2 1/2 FEET.
 12. EASEMENTS HAVE BEEN PROVIDED FOR SANITARY AND STORM SEWERS AND ALL UTILITIES AND ARE SHOWN ON THE RECORD PLAT. SEE RECORD PLAT FOR SIZE AND LOCATION OF EASEMENTS PROVIDED. NO EASEMENTS HAVE BEEN OBTAINED FOR HOUSE LATERALS.
 13. ALL ROUGH GRADING SHALL BE WITHIN 0.2 FEET MORE OR LESS OF THOSE SHOWN ON THE GRADING PLAN.
 14. NO SLOPE SHALL BE STEEPER THAN 3:1 AND SHALL BE EITHER SEEDED AND MULCHED OR SODDED.
 15. NO GRADED AREAS SHALL REMAIN WITHOUT BEING SEEDED AND MULCHED AS NECESSARY TO MAINTAIN EROSION CONTROL.
 16. ALL CONSTRUCTION AND MATERIALS REQUIRED SHALL CONFORM TO THE CITY OF O'FALLON STANDARDS.

For Storm Sewer Profiles See Sheets 13+14
 For Sanitary Sewer Profiles See Sheets 15-18

SURREY COURT



GBA
 GEORGE BUTLER ASSOCIATES, INC.
 CONSULTING ENGINEERS/ARCHITECTS
 LANDSCAPE ARCHITECTS/PLANNERS

OFFICES:
 ONE PINE RIDGE PLAZA
 807 MELROSE DRIVE, LENEXA, KANSAS 66214
 100 CITY CENTER SQUARE
 100 MAIN, KANSAS CITY, MISSOURI 64105
 5011 E. COLONIAL PLAZA
 14 E. ELM / O'FALLON, MISSOURI 63366

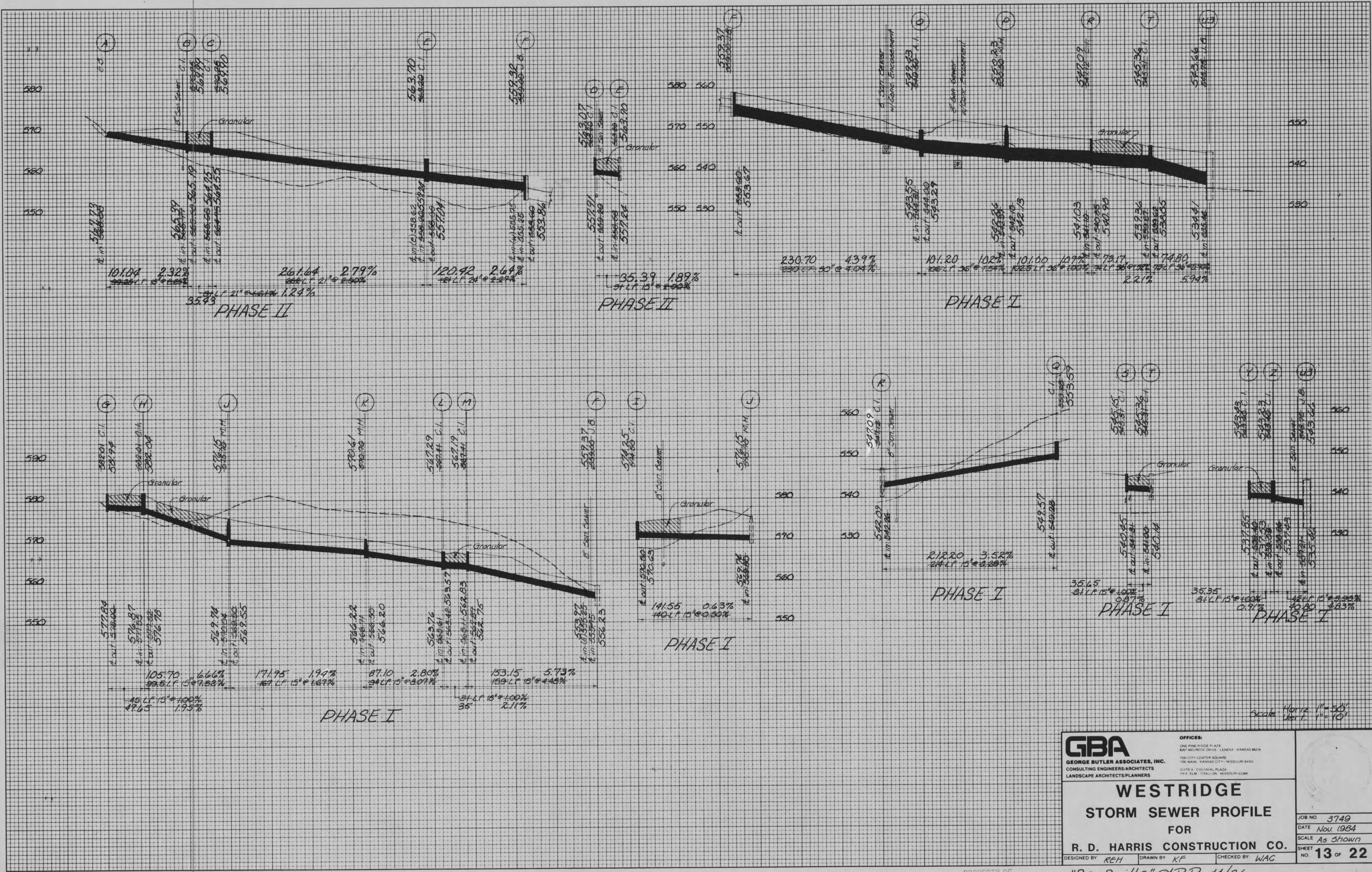
WESTRIDGE STREET PLAN AND PROFILE
 SURREY COURT
 FOR
R. D. HARRIS CONSTRUCTION CO.

DESIGNED BY: REH DRAWN BY: KF CHECKED BY: WAC

JOB NO. 3749
 DATE Nov. 1984
 SCALE As Shown
 SHEET NO. 11 of 22

"As-Builts" C.R.P. 11/86

PROPERTY OF
 CITY OF O'FALLON
 BUILDING DEPARTMENT



GBA
 GEORGE BUTLER ASSOCIATES, INC.
 CONSULTING ENGINEERS/ARCHITECTS
 LANDSCAPE ARCHITECTS/PLANNERS

OFFICES:
 ONE PINE RIDGE PLAZA
 8207 MELROSE DRIVE - LENEXA - KANSAS 6624
 100 CITY CENTER SQUARE
 100 MAIN - KANSAS CITY, MISSOURI 64105
 SUITE 4 COLONIAL PLAZA
 114 E. ELM - ST. LOUIS, MISSOURI 63102

WESTRIDGE
 STORM SEWER PROFILE
 FOR
 R. D. HARRIS CONSTRUCTION CO.

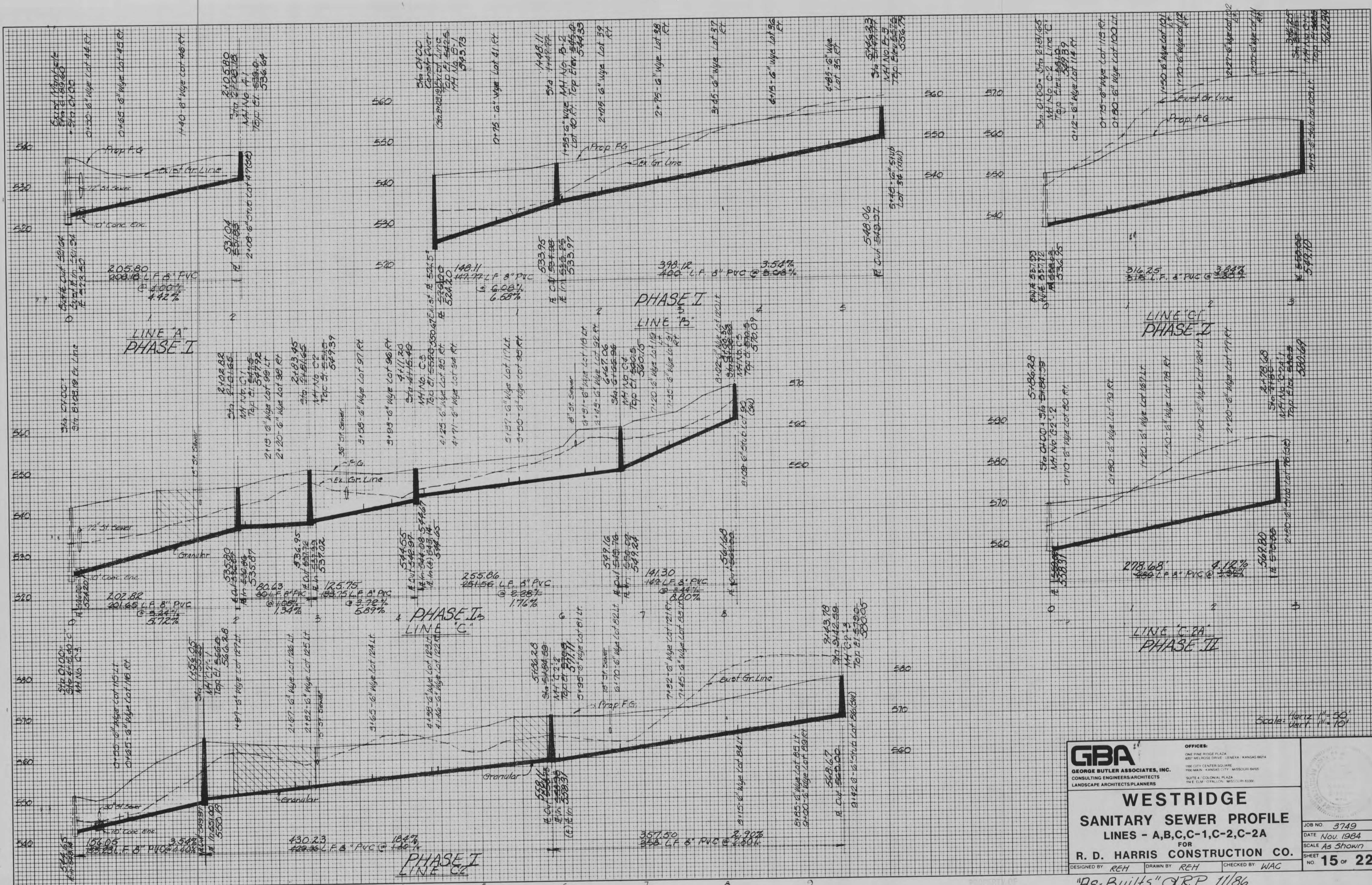
DESIGNED BY REH DRAWN BY KF CHECKED BY WAC

JOB NO 3749
 DATE Nov 1984
 SCALE As Shown
 SHEET NO 13 of 22

PROPERTY OF
 CITY OF ST. LOUIS
 BUILDING DEPARTMENT

"As-Built" & R.P. 11/86

WESTRIDGE Profile 1211 A-10



Scale: Horiz. 1" = 50'
Vert. 1" = 10'

GBA
 GEORGE BUTLER ASSOCIATES, INC.
 CONSULTING ENGINEERS/ARCHITECTS
 LANDSCAPE ARCHITECTS/PLANNERS

WESTRIDGE
 SANITARY SEWER PROFILE
 LINES - A, B, C-1, C-2, C-2A
 FOR
 R. D. HARRIS CONSTRUCTION CO.

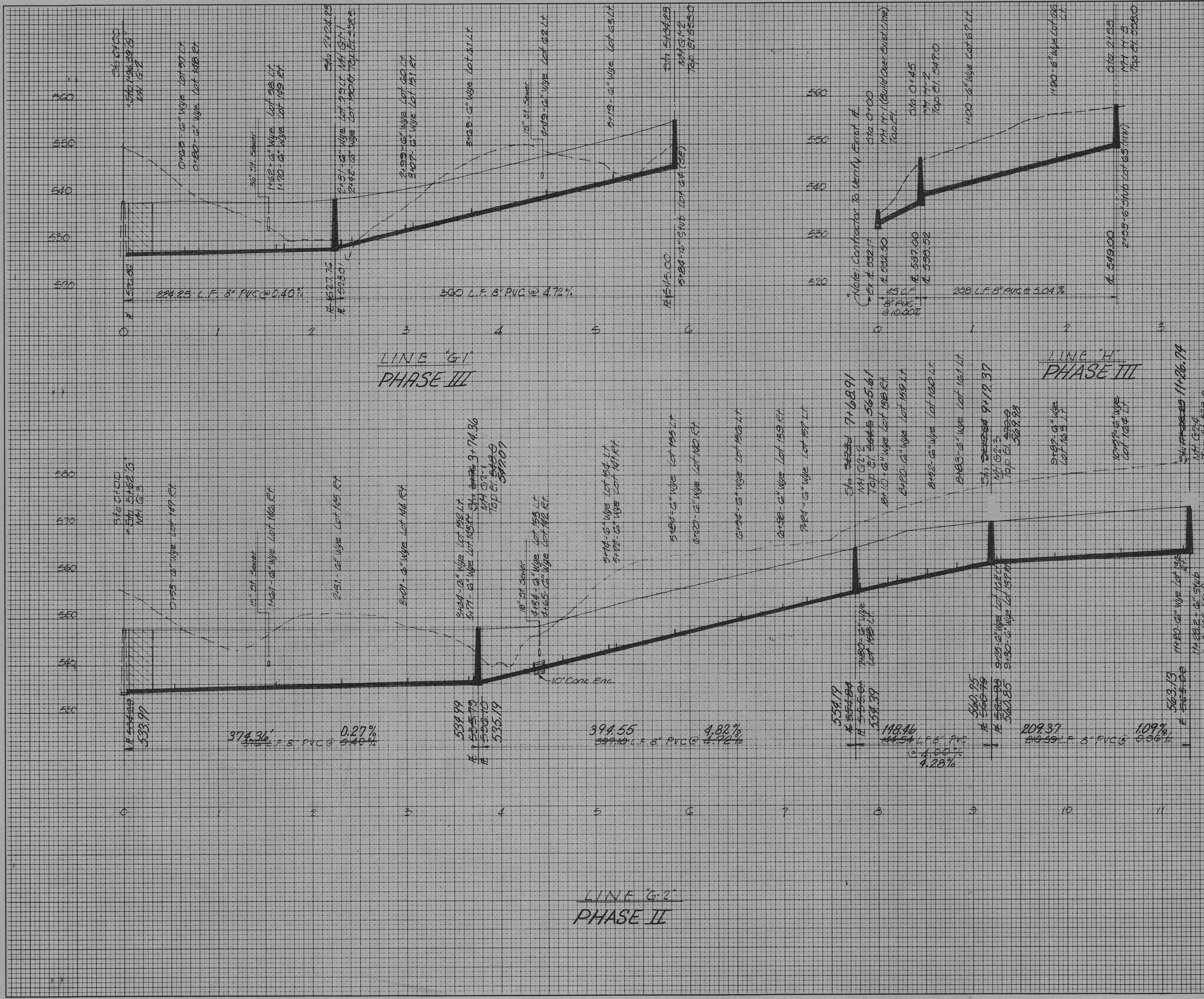
JOB NO. 3749
 DATE Nov. 1984
 SCALE As Shown
 SHEET NO. 15 OF 22

DESIGNED BY REH DRAWN BY REH CHECKED BY WAC

"As-Built" D.R.P. 11/86

CITY OF O'FALLON
 BUILDING DEPARTMENT

A/B
 WESTRIDGE SANITARY SEWER PROFILE



LINE 'G1'
PHASE III

LINE 'H'
PHASE III

LINE 'G2'
PHASE II

Scale: Horiz 1" = 50'
Vert. 1" = 10'

GBA
GEORGE BUTLER ASSOCIATES, INC.
CONSULTING ENGINEERS/ARCHITECTS
LANDSCAPE ARCHITECTS/PLANNERS

OFFICES:
ONE PINE RIDGE PLAZA
2307 MELROSE DRIVE - LENEXA - KANSAS 66214
100 CITY CENTER SQUARE
100 MAIN - KANSAS CITY - MISSOURI 64105
SUITE 4 - COLONIAL PLAZA
116 E. ELM - O'FALLON - MISSOURI 63366

WESTRIDGE
SANITARY SEWER PROFILE
LINES - G-1, G-2, H
FOR

R. D. HARRIS CONSTRUCTION CO.

DESIGNED BY REH DRAWN BY REH CHECKED BY WAC

JOB NO. 3749
DATE Nov. 1984
SCALE As Shown
SHEET NO. 17 OF 22

"As-Built" C.R.P. 11/86

PROPERTY OF
CITY OF FALLON
BUILDING DEPARTMENT

WESTRIDGE AS-BLT
SAN. SEWER AS-BLT
2 OF 2