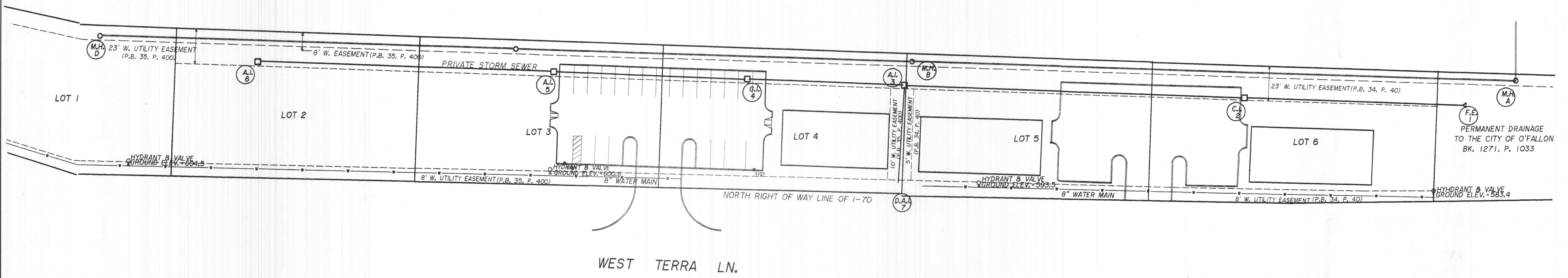
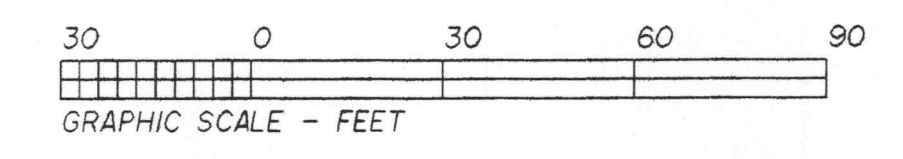
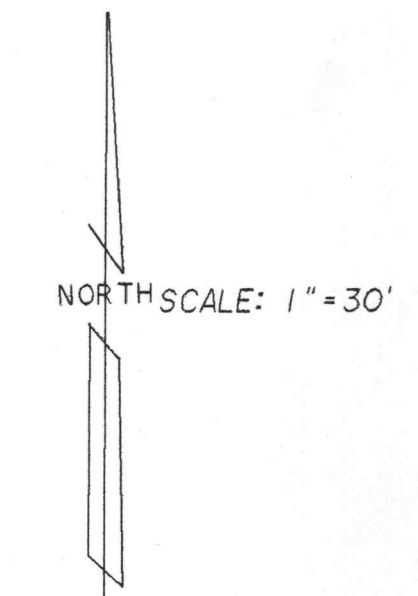
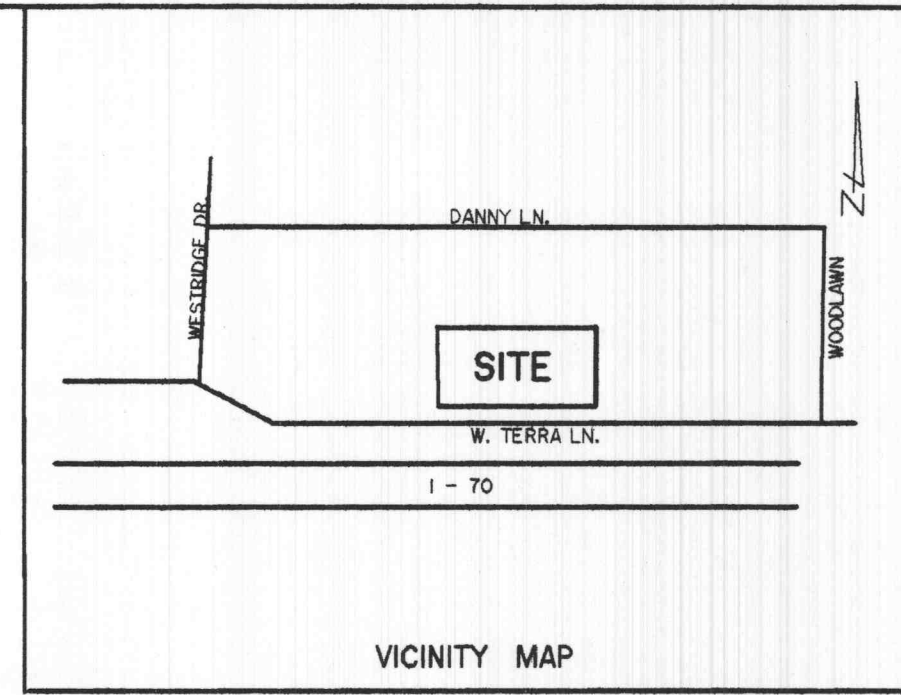


FINAL AS-BUILTS WESTWOOD BUSINESS PARK

PART U.S. SURVEY 55, T. 47 N., R. 3 E.
CITY OF O'FALLON, ST. CHARLES CO., MO.

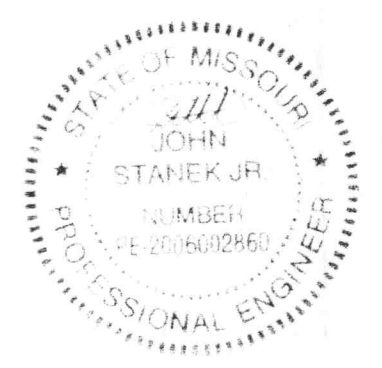


CITY OF O'FALLON
COMMUNITY DEVELOPMENT DEPARTMENT
ACCEPTED FOR CONSTRUCTION
BY: JM DATE: 10-18-11
PROFESSIONAL ENGINEER'S SEAL
INDICATES RESPONSIBILITY FOR DESIGN

U.S.G.S. BENCHMARK: PER MoDOT PLANS FOR I-70:
SOUTHEAST CORNER OF SOUTH HEADWALL 59 FT. RIGHT OF STATION
703+50 ELEV. = 618.94

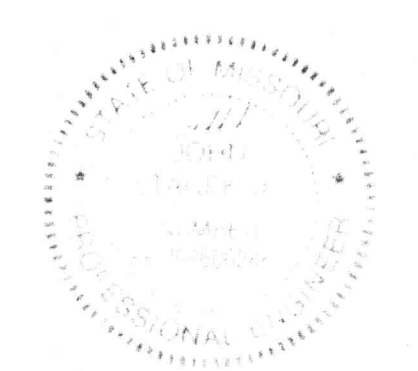
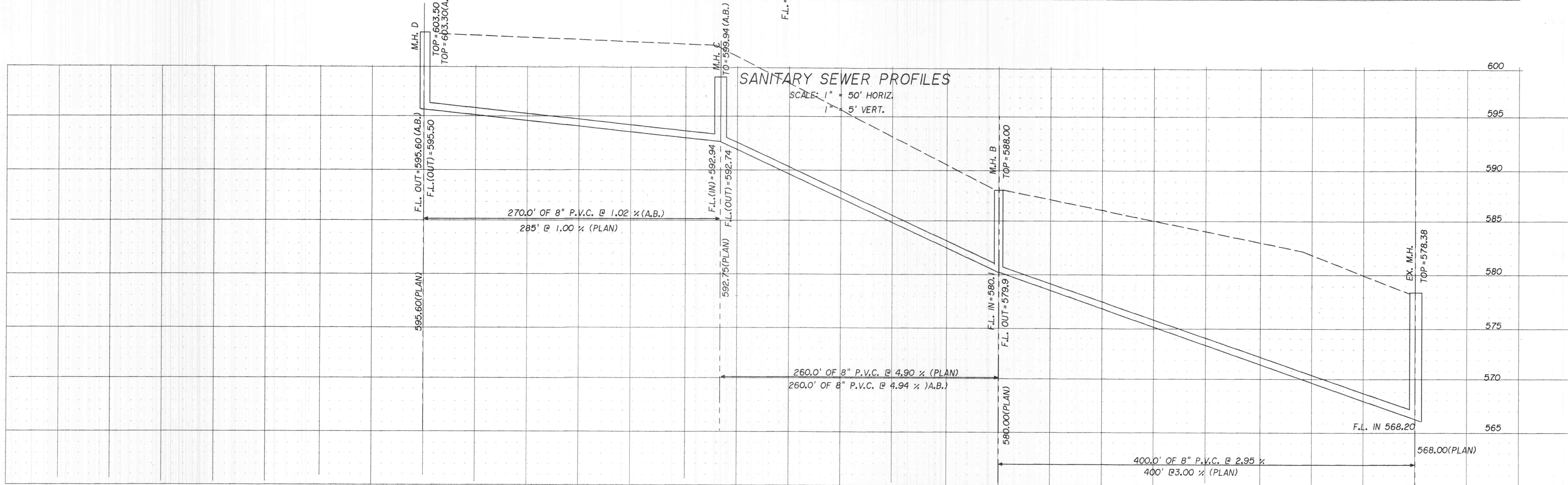
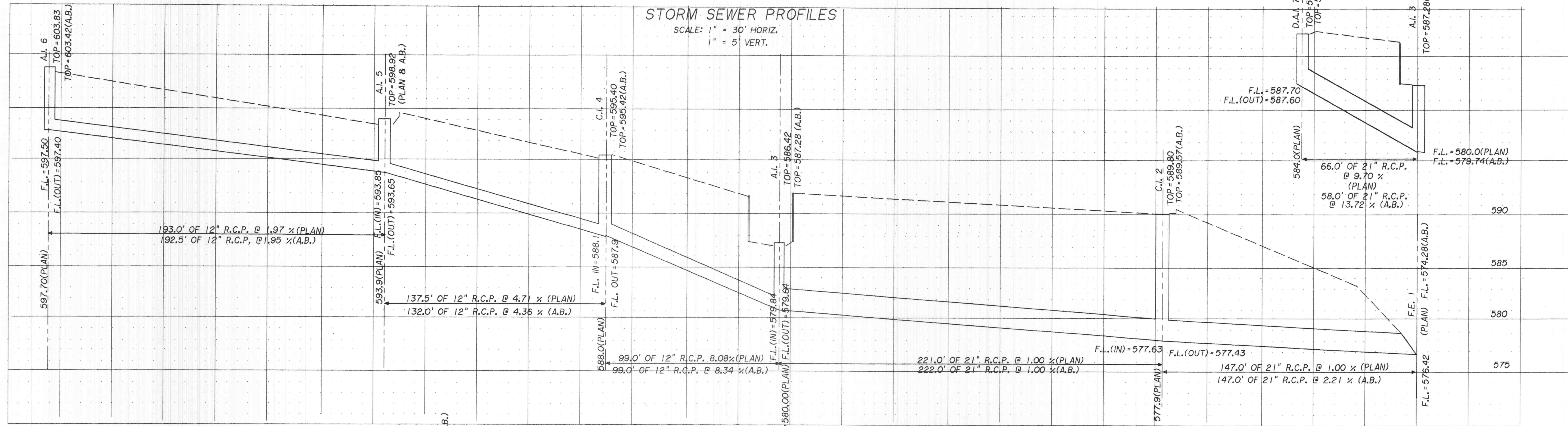
SITE BENCHMARK: TOP OF SANITARY MANHOLE AT THE NORTHWEST
CORNER OF THE DETENTION BASIN ELEV. = 578.38

Landmark Surveying & Engineering, Inc.
802 E. Main St., Wentzville, Mo., 63385
636-332-9190 327-5853 Troy: 528-5452 Fax: 332-9288



FINAL AS-BUILTS

drwn: DWW	chd:	rev: DWW	job no:
date: 4-07-10	date:	date: 3-03-11	



Landmark Surveying & Engineering, Inc.
 802 E. Main St., Wentzville, Mo., 63385
 636-332-9190 327-5853 Troy: 528-5452 Fax: 332-9285

SEWER PROFILES

drwn: DW	chd:	rev:	job no:
date: 4-01-10	date:	date:	

AS-BUILTS

2 OF 2