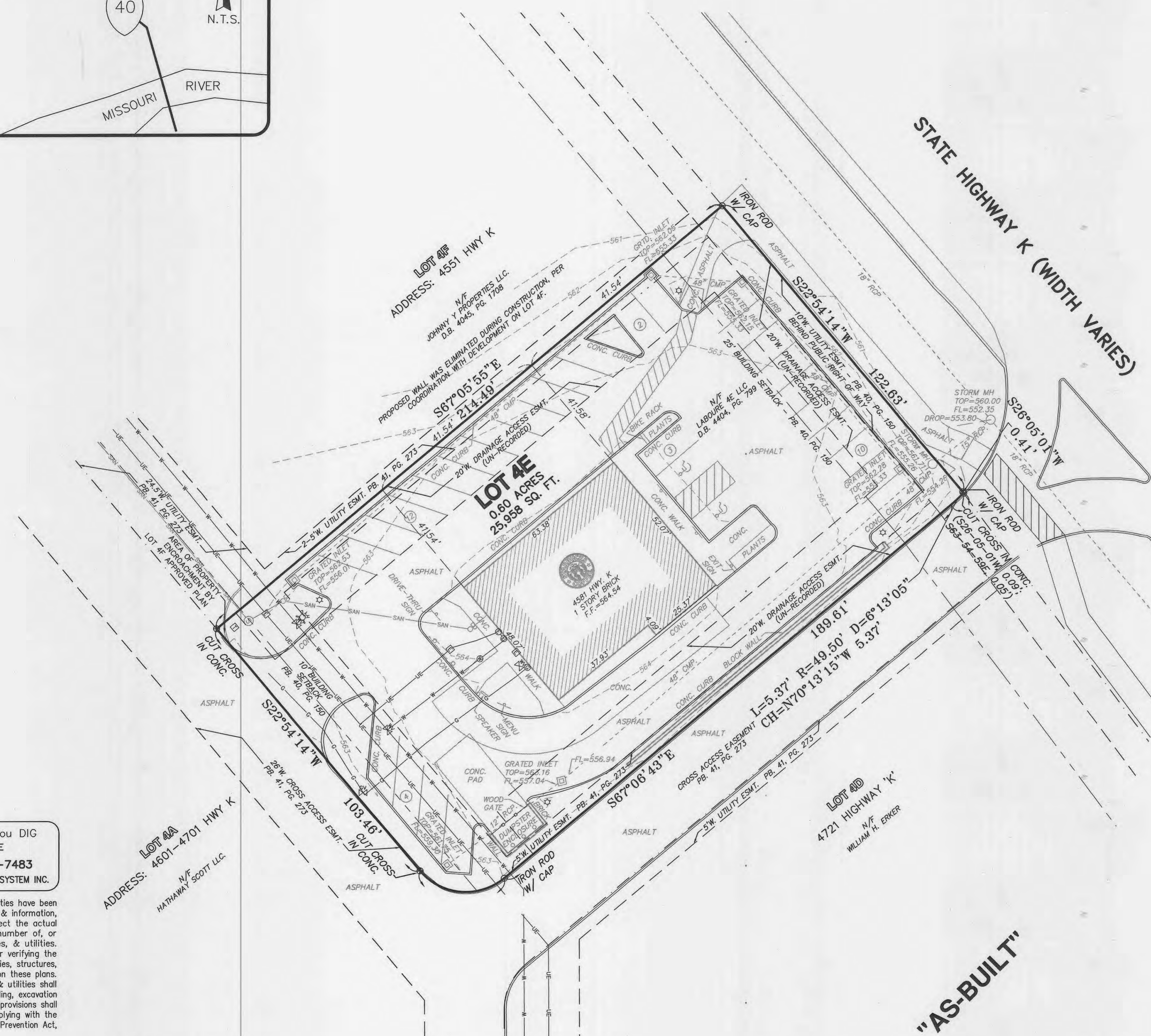
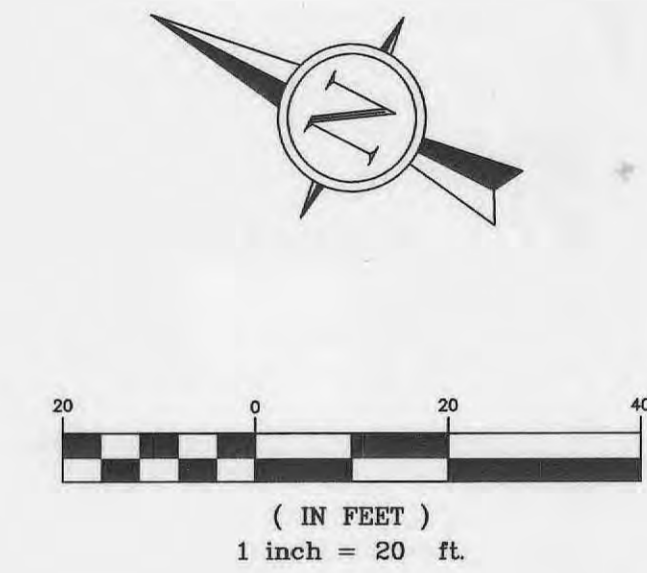


LOT 4E
A BOUNDARY ADJUSTMENT OF LOTS 4A, 4B, 4C, 4D, 4E AND 4F
OF WILLIAM H. ERKER SUBDIVISION
 PLAT BOOK 41, PAGE 273
 CITY OF O'FALLON, ST. CHARLES COUNTY, MISSOURI



LEGEND

- FOUND 3/4" IRON PIPE
- FOUND 1/2" IRON ROD W/ CAP
- ⊕ FOUND CUT CROSS
- ⊕ UTILITY POLE
- ⊕ GUY WIRE
- ⊕ LIGHT POLE
- ⊕ ELECTRIC BOX
- ⊕ ELECTRIC METER
- ⊕ TELEPHONE BOX
- ⊕ TELEPHONE MANHOLE
- ⊕ FIRE HYDRANT
- ⊕ WATER METER
- ⊕ WATER VALVE
- ⊕ GAS METER
- ⊕ GAS VALVE
- ⊕ STREET SIGN
- ⊕ BOLLARD OR POST
- ⊕ YARD DRAIN
- ⊕ CLEANOUT
- ⊕ FLARED END SECTION
- ⊕ STORM DRAIN W/GRATE INLET
- ⊕ STORM DRAIN W/AREA INLET
- ⊕ STORM DRAIN W/MANHOLE
- ⊕ SANITARY SEWER W/MANHOLE
- ⊕ OVERHEAD ELECTRIC LINE
- ⊕ UNDERGROUND ELECTRIC LINE
- ⊕ UNDERGROUND TELEPHONE LINE
- ⊕ WATER LINE
- ⊕ GAS LINE
- ⊕ GUARDRAIL
- 513 --- 1' CONTOUR INTERVAL
- 510 --- 5' CONTOUR INTERVAL

J. R. GRIMES
CONSULTING ENGINEERS, INC.
 12300 OLD TESSON ROAD
 SUITE 3000
 ST. LOUIS, MO. 63128
 PH: (314) 949-6100
 FAX: (314) 949-6010

REV. NO.	REMARKS	DATE

**LOT 4E,
 A BOUNDARY
 ADJUSTMENT**

SITE AS-BUILT

JOB NUMBER:	1384C
DRAWN BY:	R.C.S.
DATE:	06/27/06
CHECKED BY:	E.E.G.
DATE:	06/27/06
SHEET:	

1 OF 1

Call Before you DIG
 TOLL FREE
 1-800-344-7483
 MISSOURI ONE-CALL SYSTEM INC.

Underground facilities, structures & utilities have been plotted from available surveys, records & information, and therefore, do not necessarily reflect the actual existence, nonexistence, size, type, number of, or location of these facilities, structures, & utilities. The Contractor shall be responsible for verifying the actual location of all underground facilities, structures, & utilities, either shown or not shown on these plans. The underground facilities, structures, & utilities shall be located in the field prior to any grading, excavation or construction of improvements. These provisions shall in no way absolve any party from complying with the Underground Facility Safety and Damage Prevention Act, Chapter 319, RSMO.

PREPARED FOR:
 J.E. FOSTER BUILDING CO.
 CONTACT: JOSHUA FOSTER
 108 GREEN PARK INDUSTRIAL COURT
 ST. LOUIS, MO 63123
 PH: (314) 842-3300
 FAX: (314) 842-3304

SEWER MEASUREMENTS
 The existing sewer lengths, sizes, flowlines, depths of structures and sewers and locations with respect to existing or proposed easements have been measured. The results of those measurements are shown on this set of Final Measurement plans. Since the wye locations have been plotted from information provided by the sewer contractor or other sources, I disclaim any responsibility for that specific information.
 All public sewers are located within designated existing or proposed easements.

James L. Whisler
 P.E./L.S. DATE 6/28/06



"AS-BUILT"