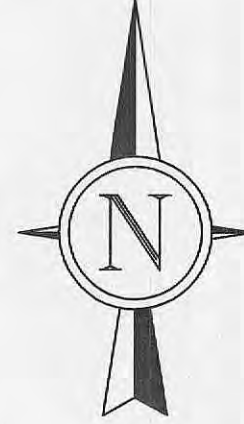
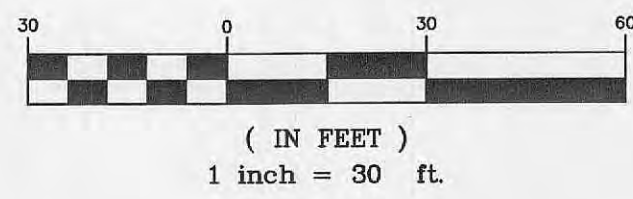


BOUNDARY AND TOPOGRAPHIC SURVEY
 A TRACT OF LAND BEING PART OF
SECTION 33, TOWNSHIP 47 NORTH, RANGE 3 EAST
 CITY OF O'FALLON, ST. CHARLES COUNTY, MISSOURI



BASIS OF BEARING
 THE WINDING WOODS DEVELOPMENT, L.L.C.
 DEED BOOK 2396, PAGE 1211

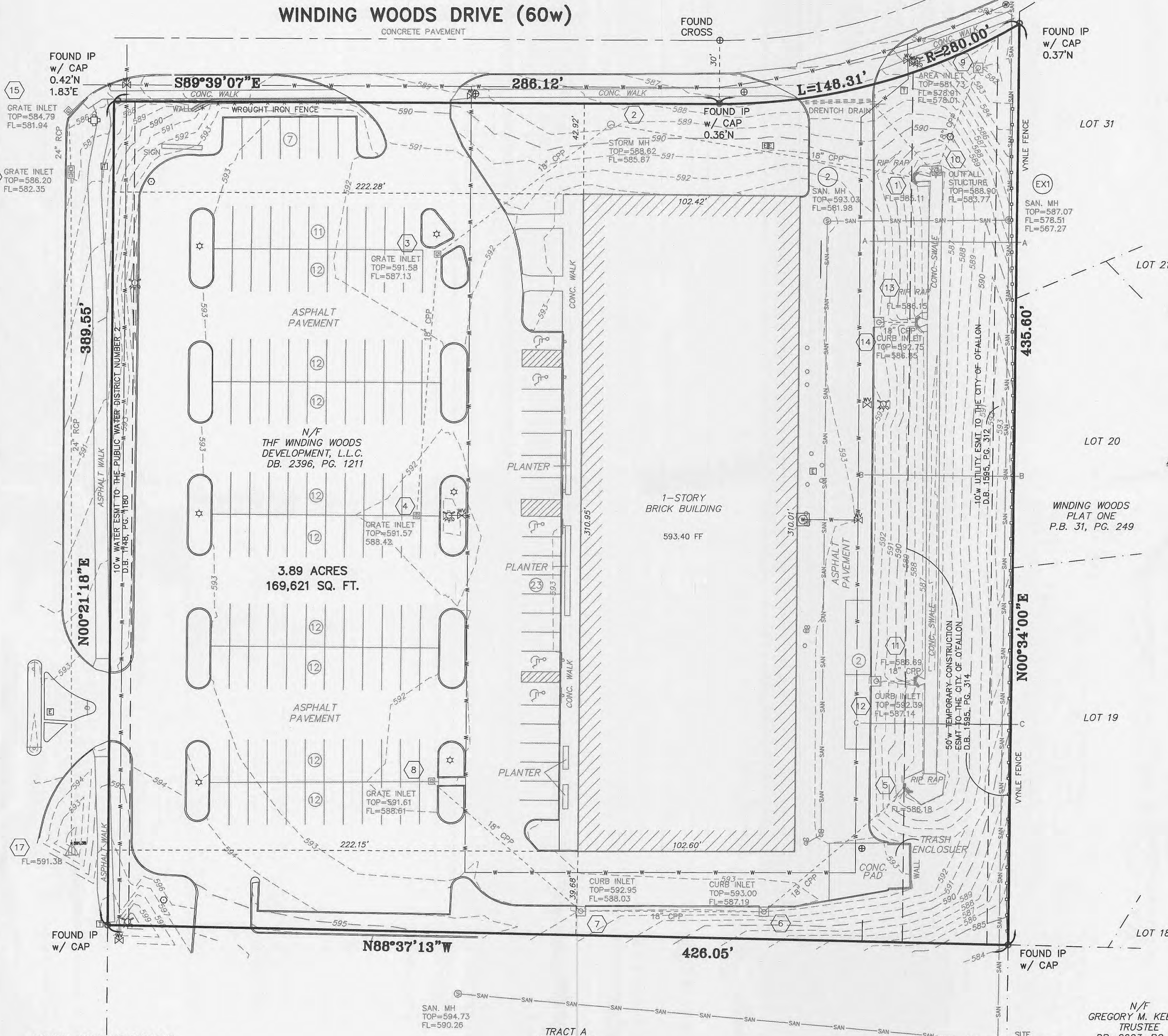


LEGEND

- UTILITY POLE
- GUY WIRE
- LIGHT POLE
- TRAFFIC SIGNAL BOX
- TRAFFIC LIGHT
- ELECTRIC BOX
- ELECTRIC METER
- ELECTRIC MANHOLE
- TELEPHONE BOX
- TELEPHONE MANHOLE
- FIRE HYDRANT
- WATER METER
- WATER VALVE
- WATER MANHOLE
- GAS METER
- GAS VALVE
- GAS DRIP
- STREET SIGN
- BOLLARD OR POST
- PARKING METER
- MAILBOX
- YARD DRAIN
- CLEANOUT
- FLARED END SECTION
- STORM DRAIN W/GRATE INLET
- STORM DRAIN W/AREA INLET
- STORM DRAIN W/MANHOLE
- SANITARY SEWER W/MANHOLE
- OVERHEAD ELECTRIC LINE
- UNDERGROUND ELECTRIC LINE
- UNDERGROUND TELEPHONE LINE
- WATER LINE
- GAS LINE
- FENCE: CHAIN LINK OR WIRE
- FENCE: WOOD CONSTRUCTION
- GUARDRAIL
- 1' CONTOUR INTERVAL
- 5' CONTOUR INTERVAL
- SPOT ELEVATION
- BUSH OR SHRUB
- TREE W/APPROX. DIAMETER

RECEIVED
 DEC 18 2005
 ENGINEERING DEPARTMENT

MISSOURI STATE HIGHWAY K (75'w)



SEWER MEASUREMENTS

The existing sewer lengths, sizes, flowlines, depths of structures and sewers and locations with respect to existing or proposed easements have been measured. The results of those measurements are shown on this set of Final Measurement plans. Since the wye locations have been plotted from information provided by the sewer contractor or other sources, I disclaim any responsibility for that specific information.



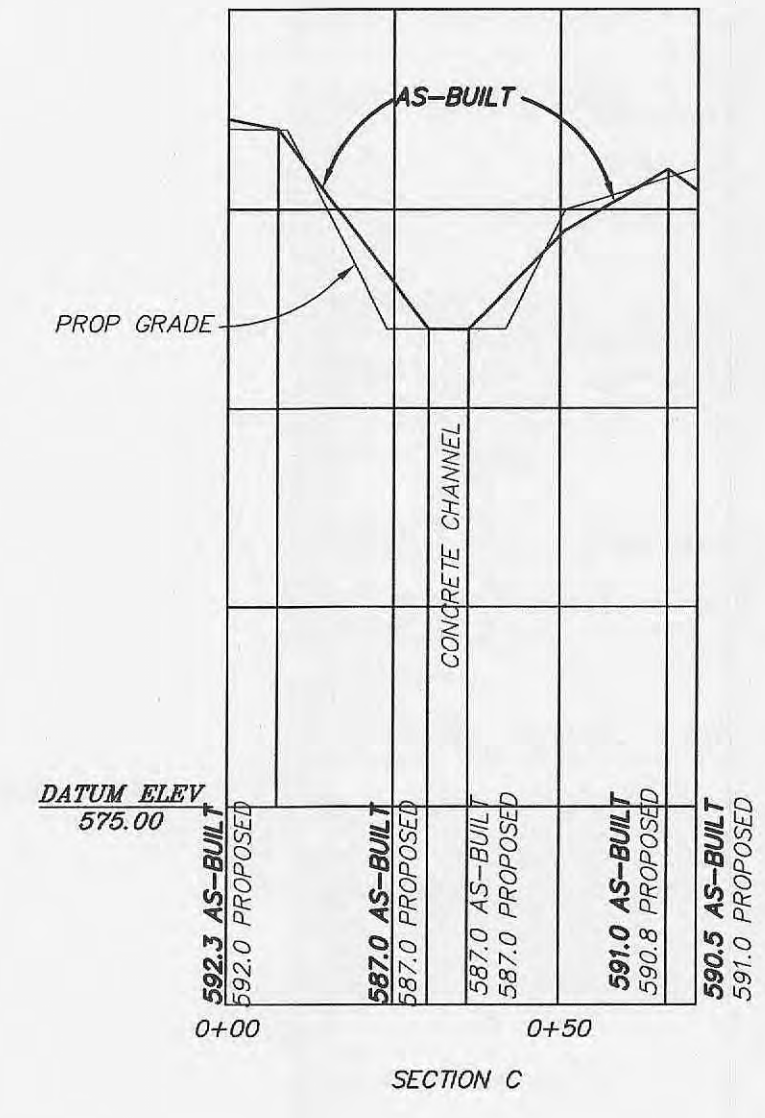
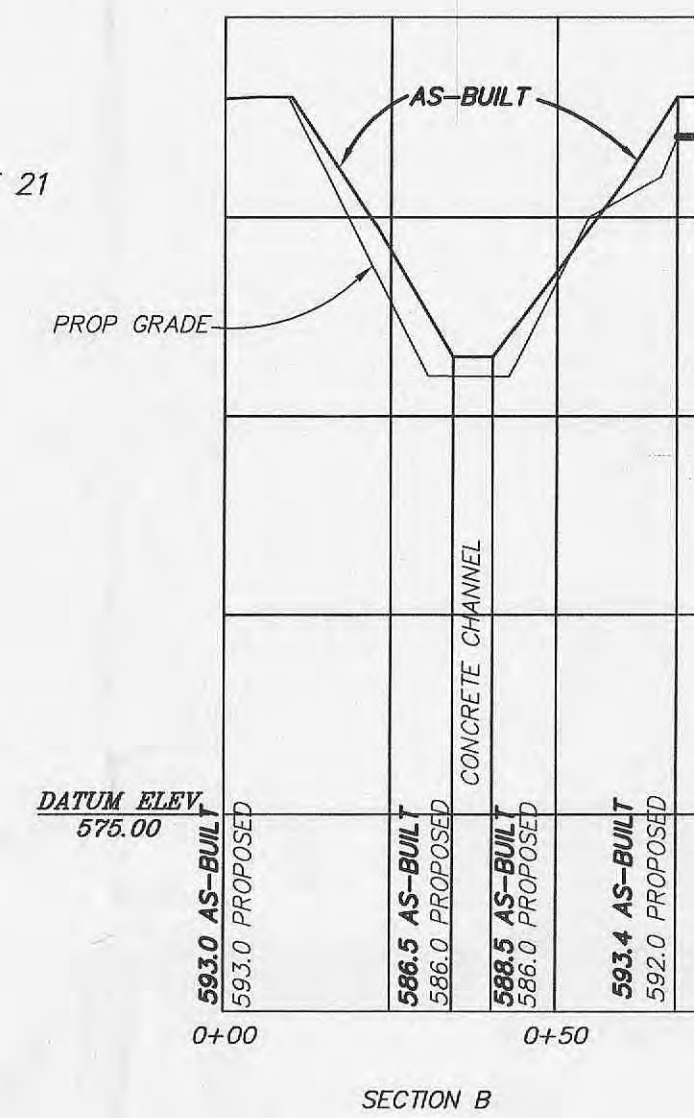
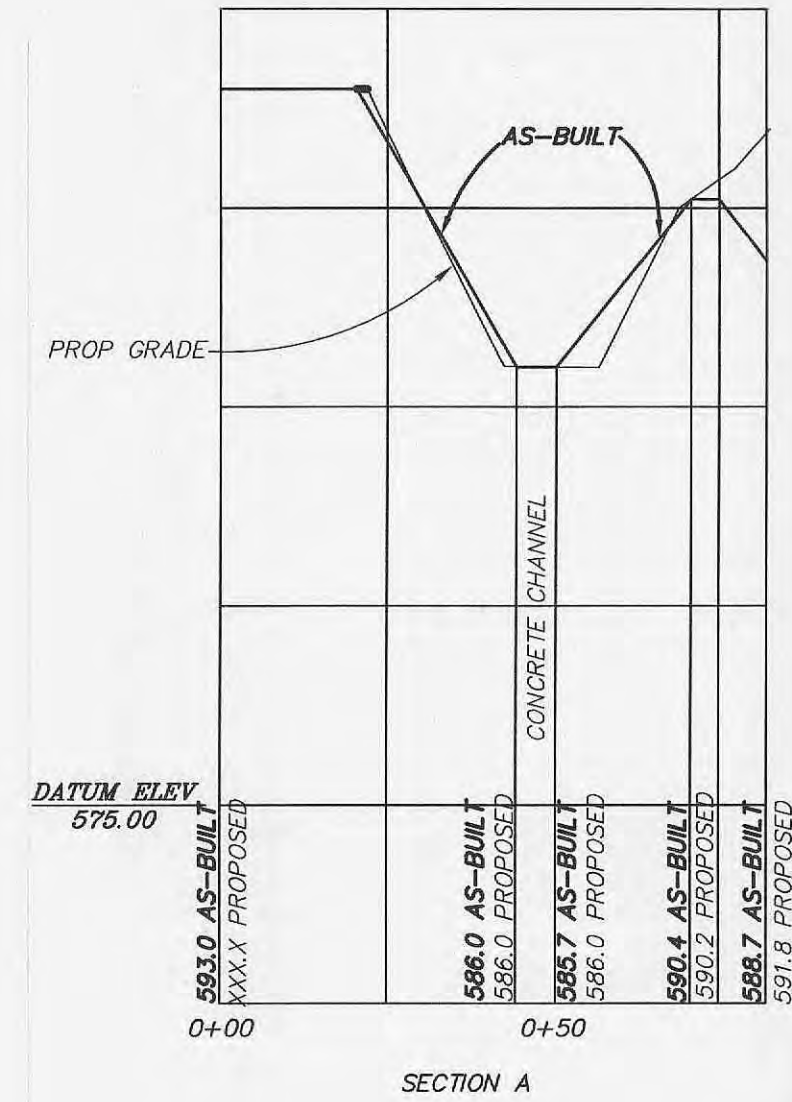
Public sewers are located within designated existing or proposed easements.
 EARL E. GRAHAM
 MISSOURI PROFESSIONAL LAND SURVEYOR
 NO. PLS-2262
 DATE 7-29-05

TRACT A
 K C CENTER
 P.B. 35, PG. 104

N/F
 A.D. VENTURES
 LIMITED PARTNERSHIP
 DB. 2236, PG. 259

SITE BENCHMARK:
 579.89 - TOP OF A SANITARY MANHOLE
 LOCATED 46' SOUTH AND 3.5' WEST OF THE
 SOUTHEAST CORNER OF SUBJECT PROPERTY.

"AS-BUILT"



BASIN SECTIONS
 SCALE: H 1" = 30' V. 1" = 5'

1-11-05
 APPROVED

--- SURVEYOR'S CERTIFICATE ---

THIS IS TO CERTIFY THAT TO THE BEST OF MY BELIEF, KNOWLEDGE, AND ABILITY J. R. GRIMES CONSULTING ENGINEERS, INC., HAS DURING THE MONTH OF NOVEMBER, 2004, PREPARED A BOUNDARY AND TOPOGRAPHIC SURVEY BASED ON FIELD INFORMATION OBTAINED FROM FIELD PERSONNEL UNDER MY DIRECTION, ON A TRACT OF LAND BEING PART OF SECTION 33, TOWNSHIP 47 NORTH, RANGE 3 EAST, SITUATED IN THE CITY OF O'FALLON, THE COUNTY OF ST. CHARLES, AND THE STATE OF MISSOURI. I ALSO DECLARE THAT UNDER MY SUPERVISION AND TO THE BEST OF MY ABILITY AND PROFESSIONAL JUDGEMENT THAT THE RESULTS SHOWN HEREON ARE MADE IN ACCORDANCE WITH THE CURRENT MINIMUM STANDARDS FOR PROPERTY BOUNDARY SURVEYS FOR URBAN CLASS PROPERTY AS SET FORTH BY THE MISSOURI DEPARTMENT OF NATURAL RESOURCES, DIVISION OF GEOLOGY AND LAND SURVEY AND RULES PROMULGATED BY THE MISSOURI BOARD FOR ARCHITECTS, PROFESSIONAL ENGINEERS, AND LAND SURVEYORS EFFECTIVE OCTOBER 31, 2003.

IN WITNESS WHEREOF, WE HERETO SET OUR FIRM NAME AT OUR OFFICE IN ST. LOUIS COUNTY, MISSOURI ON THIS 29th DAY OF July, 2005.

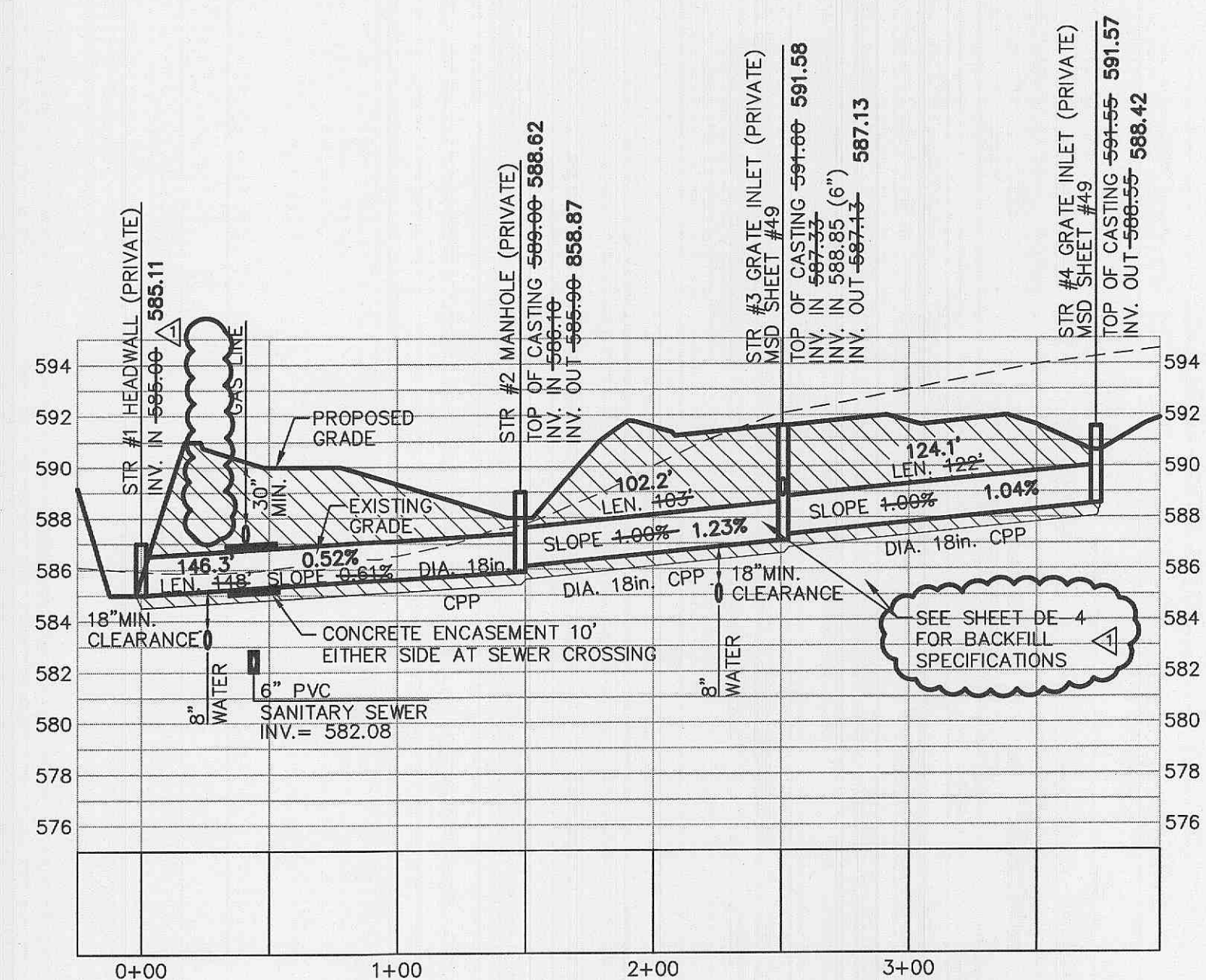
J. R. GRIMES CONSULTING ENGINEERS, INC. LS-343

BY: EARL E. GRAHAM, PLS #2262
 MISSOURI PROFESSIONAL LAND SURVEYOR

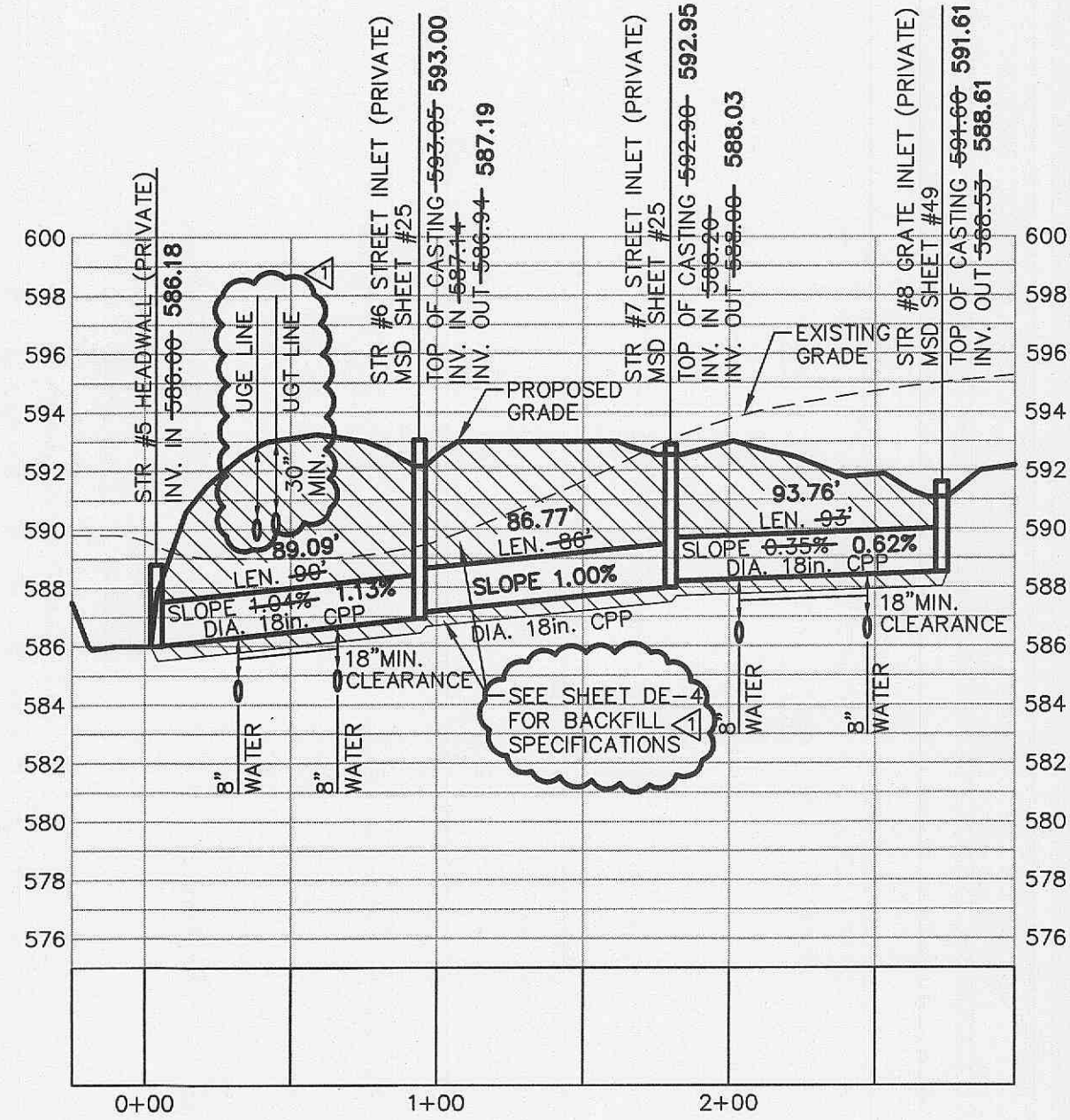
Winding Woods Center As Built
SECTION 33, T. 47 N., R. 3 E.
BOUNDARY AND TOPOGRAPHIC SURVEY

J. R. GRIMES
CONSULTING ENGINEERS, INC.

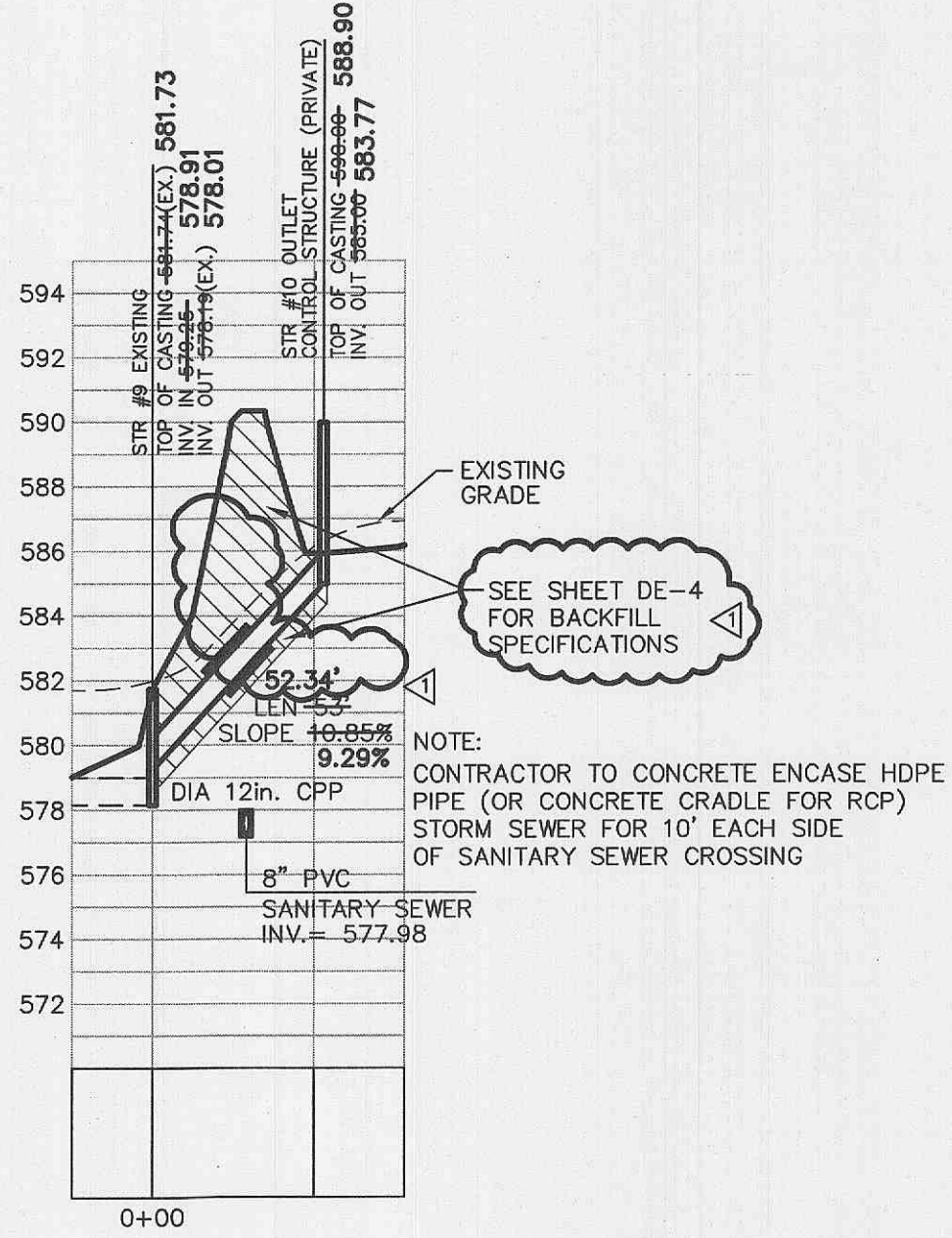
12300 OLD TESSON ROAD
 SUITE 300-D
 ST. LOUIS, MO. 63128
 PH. (314) 849-6100
 FAX (314) 849-6010
 E-MAIL jrgeng@mlnk.com



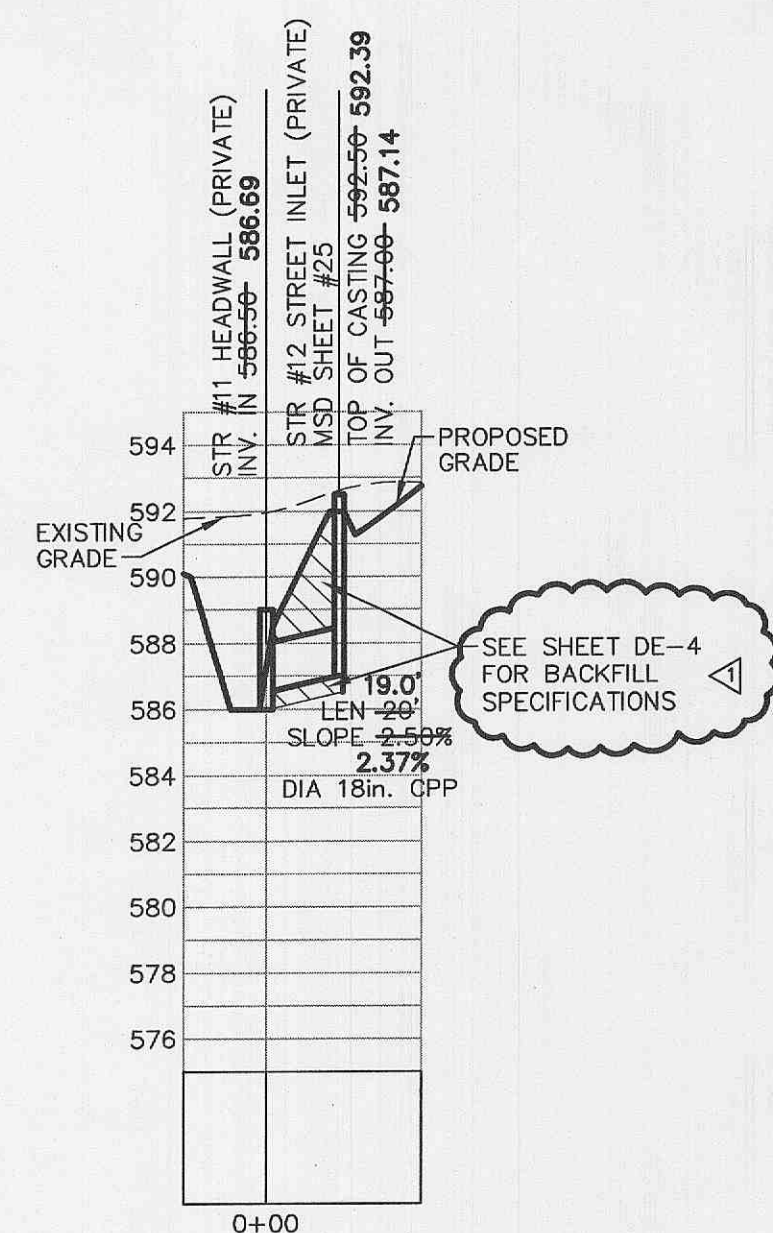
STR #1 THRU STR #4
SCALE: 1" = 60' HORIZ.
1" = 6' VERT.



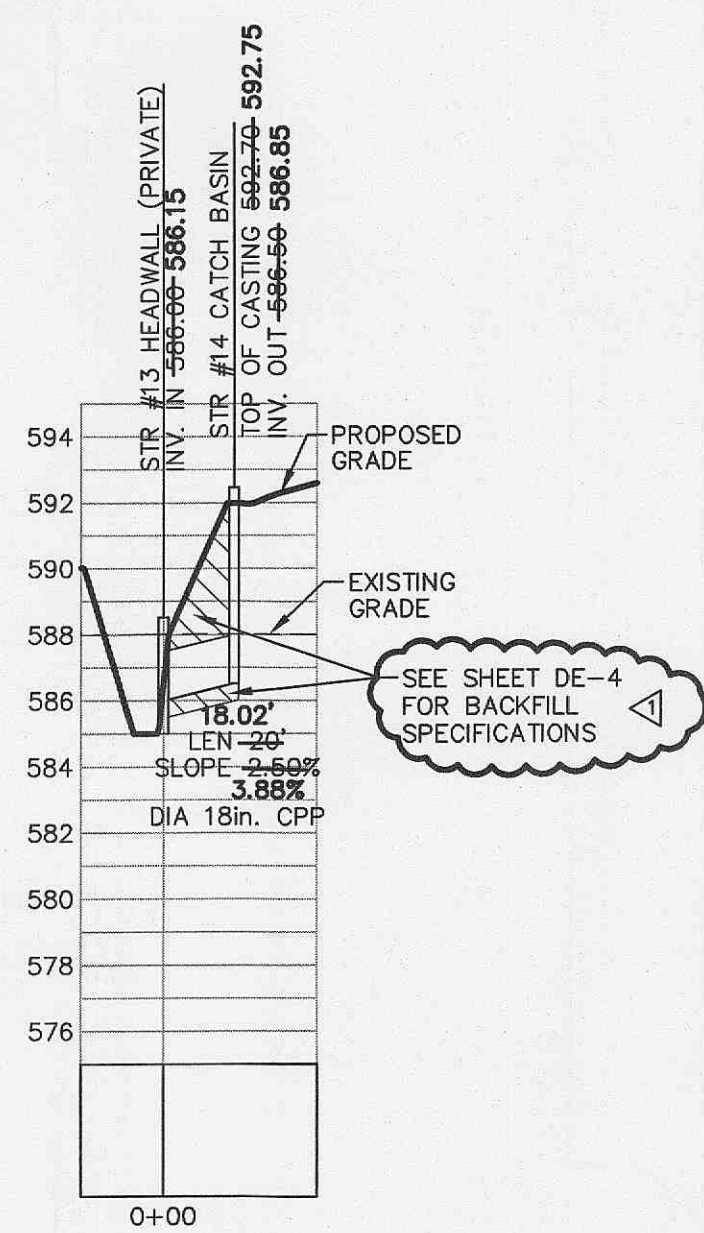
STR #5 THRU STR #8
SCALE: 1" = 60' HORIZ.
1" = 6' VERT.



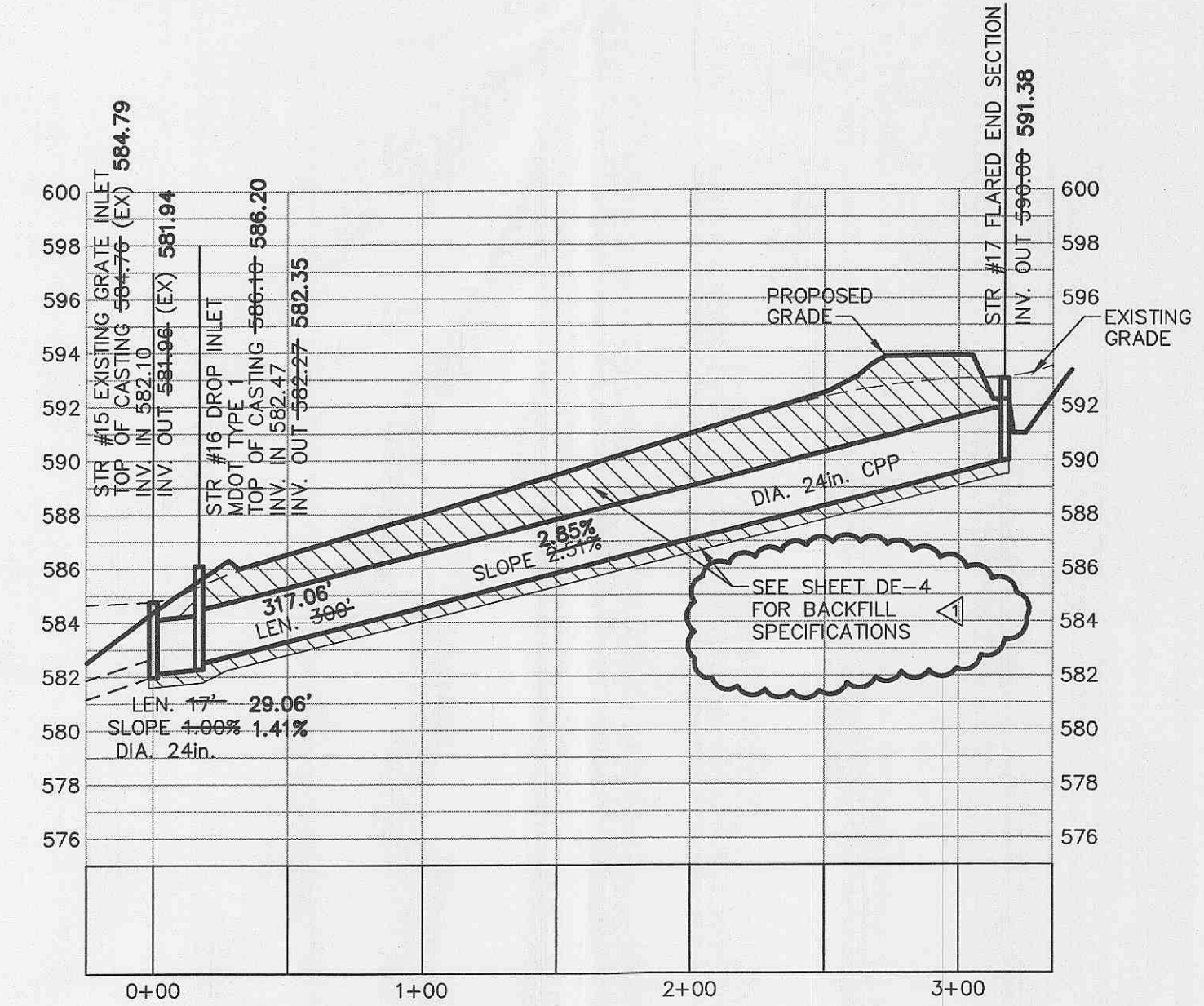
STR #9 THRU STR #10
SCALE: 1" = 60' HORIZ.
1" = 6' VERT.



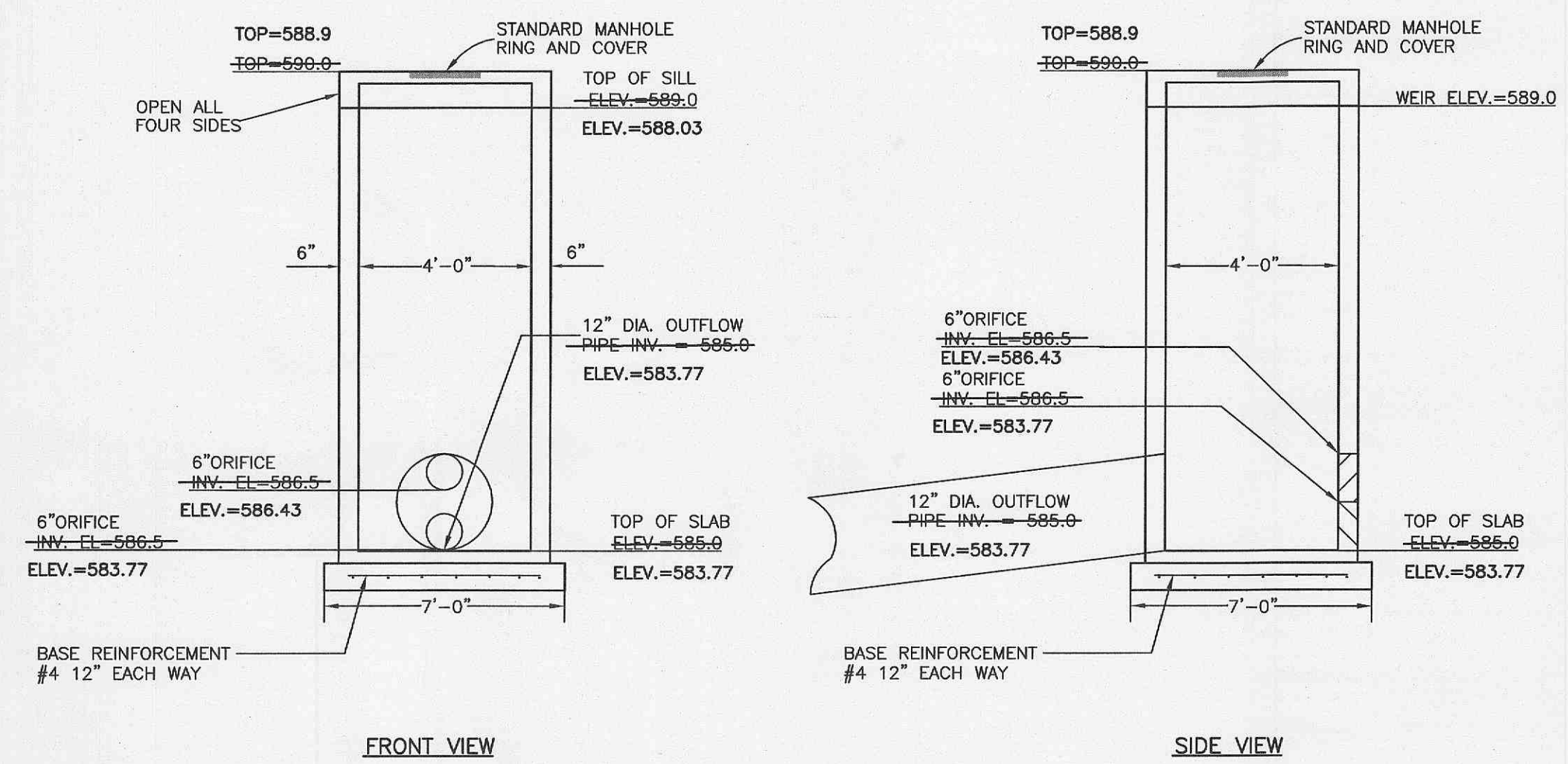
STR #11 THRU STR #12
SCALE: 1" = 60' HORIZ.
1" = 6' VERT.



STR #13 THRU STR #14
SCALE: 1" = 60' HORIZ.
1" = 6' VERT.



STR #15 THRU STR #17
SCALE: 1" = 60' HORIZ.
1" = 6' VERT.



OUTLET CONTROL STRUCTURE #10
N.T.S.

"AS-BUILT"
Earl E. Graham
PLS 2262
7-29-05

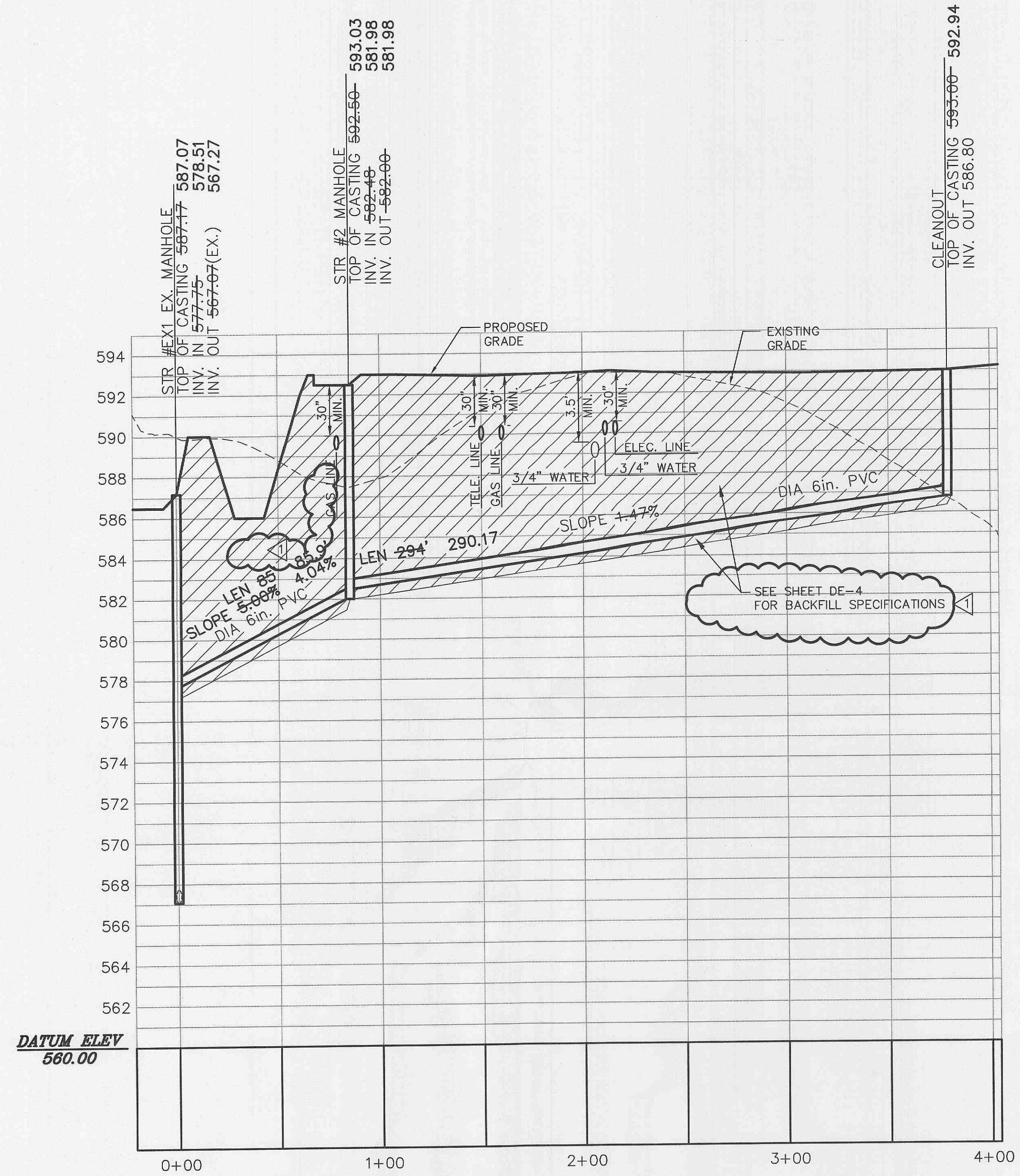


SECTION 33, T. 47 N., R. 3 E.
STORM SEWER AS-BUILTS

J. R. GRIMES
CONSULTING ENGINEERS, INC.

12300 OLD TESSON ROAD
SUITE 300-D
ST. LOUIS, MO. 63128
PH. (314) 849-6100
FAX (314) 849-6010
E-MAIL: jrgeng@inlink.com

DRAWN BY:	DATE:	CHECKED BY:	DATE:	JOB NUMBER:	SHEET:
S.A.B.	11/29/04	E.E.G.	11/29/04	1191	2 of 3



STR #1 THRU STR #2
SCALE: 1" = 40' HORIZ.
1" = 4' VERT.

"AS-BUILT"
Earl E. Graham
PLS-2262
2-29-05

STATE OF MISSOURI
EARL E. GRAHAM
REGISTERED PROFESSIONAL
LAND SURVEYOR
NUMBER
PLS2262

SECTION 33, T. 47 N., R. 3 E.
SANITARY SEWER AS-BUILTS

J. R. GRIMES
CONSULTING ENGINEERS, INC.

12300 OLD TESSON ROAD
SUITE 300-D
ST. LOUIS, MO. 63128
PH. (314) 849-6100
FAX (314) 849-6010
E-MAIL jrgeng@inlink.com

DRAWN BY: S.A.B.	DATE: 11/29/04	CHECKED BY: E.E.G.	DATE: 11/29/04	JOB NUMBER: 1191	SHEET: 3 of 3
---------------------	-------------------	-----------------------	-------------------	---------------------	------------------