



WINGHAVEN™

WINGHAVEN™ RESIDENTIAL L.L.C.

HAWTHORNE VILLAGE SEWER AS-BUILTS


The existing sewer lengths, sizes, flowlines, depths of structures and sewers and locations with respect to existing or proposed easements have been measured. The results of those measurements are shown on this set of Final Measurement Plans. Since the wye locations have been plotted from information provided by the sewer contractor or other sources, I disclaim any responsibility for that specific information.

All public sewers are located within designated existing or proposed easements except as shown in this drawing.

The results of those measurements are shown on this drawing by lining out the planned number and indicating the measured number adjacent to the planned number. All other numbers shown have not been measured or verified.

The location of the sewers were determined by locating the manholes and traversing in a straight line between them.

No hydraulic computations have been done on the measured lines to verify or confirm the capacity, freeboard or design requirements of the sewers.


Roger G. Allen
R.L.S. No. 2185


VOLZ




This Site Has no areas within the 100 Year Flood Plain per FIRM Map No. 29183C0220 E

Tributary A as designated on the "Wetlands and Creeks Master Plan" prepared by Kuhlmann Design Group

NOTE: EXISTING SANITARY SEWER SERVICE SHALL NOT BE INTERRUPTED

50' Wide Undisturbed Buffer about Tributary A

CAUTION!!!
LOTS 318 THRU 321 AND LOTS 329 & 330 ARE SUBJECT TO MINIMUM LOW SILL ELEVATIONS

STORMWATER DETENTION FOR WINGHAVEN WILL BE PROVIDED IN SEVERAL DETENTION PONDS WITHIN THE DEVELOPMENT. VOLZ, INC. IS PREPARING A DETENTION STUDY FOR ALL OF WINGHAVEN WHICH WILL SHOW HOW DETENTION IS PROVIDED FOR EACH PHASE OF THE DEVELOPMENT.



WINGHAVEN
RESIDENTIAL L.L.C.
*UNBROKERED & SON
CORPORATE CENTER DRIVE
311 LOCUST CENTER DRIVE
PHOENIX, AZ 85043-3000
VOLZ

WINGHAVEN™
HAWTHORNE VILLAGE

SITE PLAN

Design By: R.L.M.
Drawn By: G.A.S.
Checked By: E.A.K.

7-02-99
2



SEWER AS-BUILTS

POST ROAD (30' W)

Property n/1 of
Fischer & Fricke
Bk. 3015 Pg. 294
Zoned R-1B

Property n/1 of
Kernan & Sons
Bk. 304 Pg. 20
Zoned R-1E

Property n/1 of
Lorane Tuffen
Bk. 362 Pg. 288
Zoned R-1E

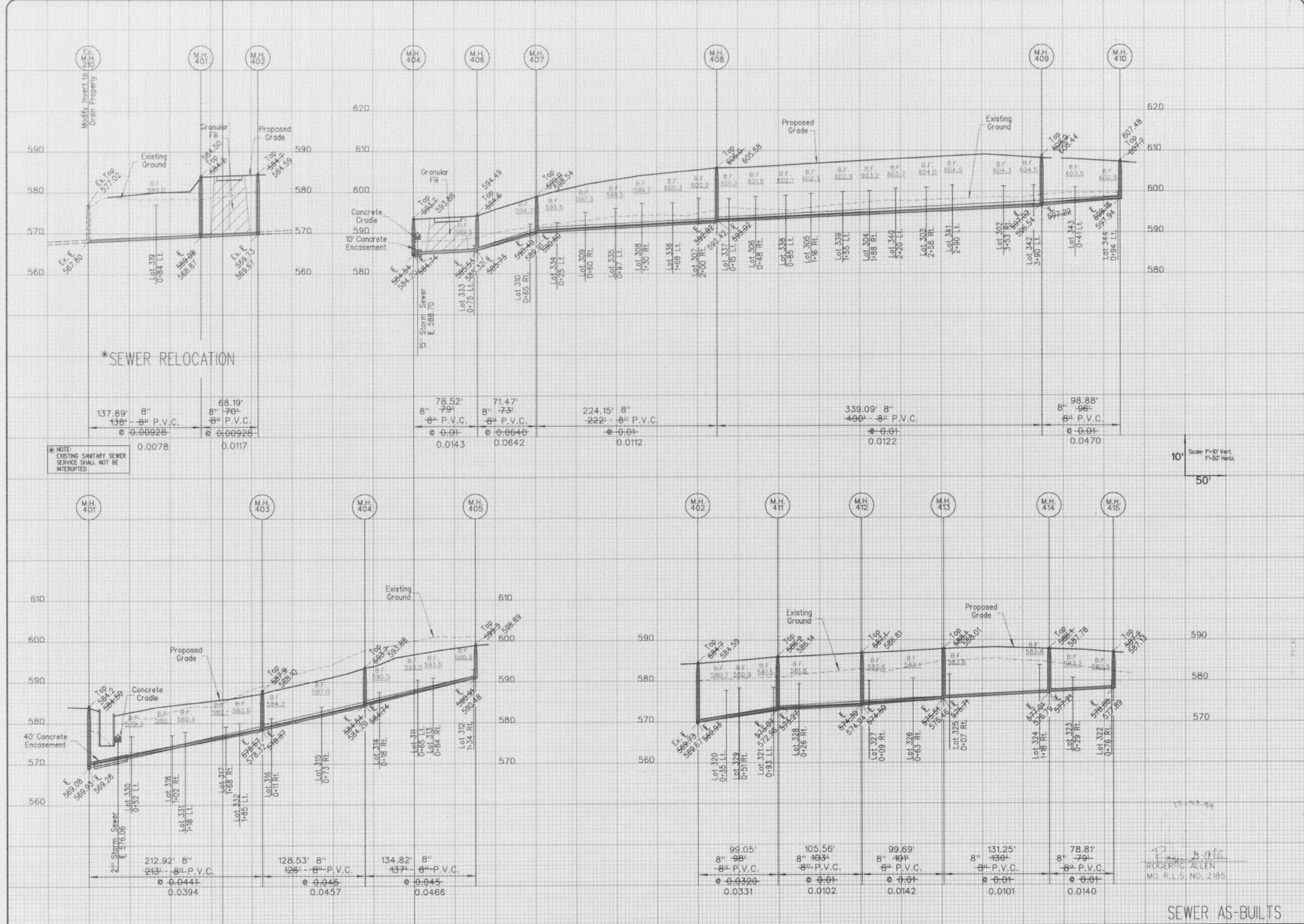
Property n/1 of
Donald B. & Diane Benjamin
Bk. 314 Pg. 1041
Zoned R-1E

Property n/1 of
Robert J. & Nancy Wilber
Bk. 1591 Pg. 668
Zoned R-1E

Property n/1 of
Kenneth R. Fleming Trustee
Bk. 1575 Pg. 851
Zoned R-1E

Property n/1 of
Robert B. & Carol A. Blumhagen
Bk. 428 Pg. 277
Zoned R-1E





WINGHAVEN
RESIDENTIAL L.L.C.



WINGHAVEN™

HAWTHORNE VILLAGE

WINGHAVEN™

HAWTHORNE VILLAGE

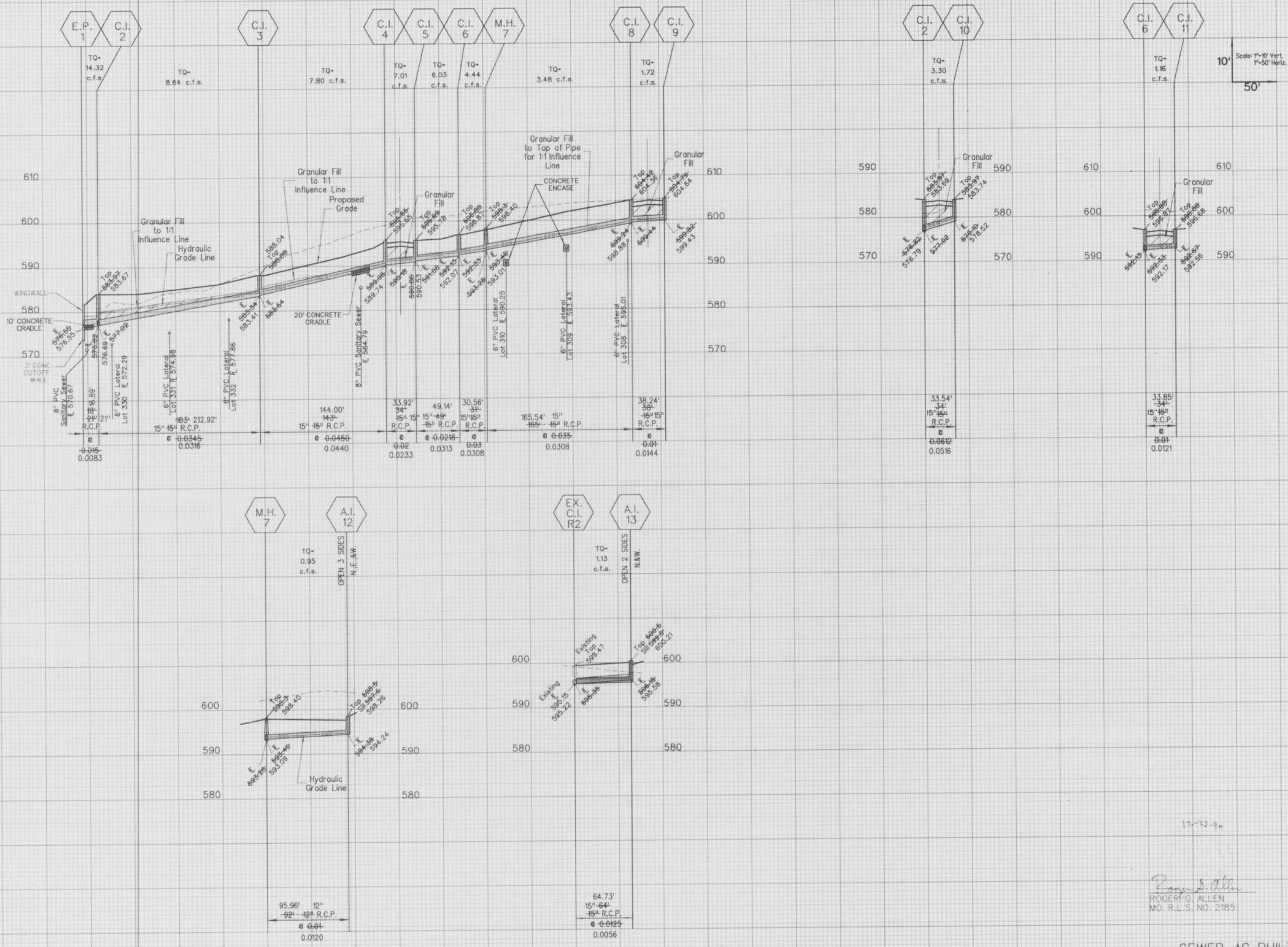
SANITARY SEWER PROFILES

Design By: G.A.S.
Drawn By: G.A.S.
Checked By: E.A.K.

5900

6-16-99

6



WINGHAVEN
RESIDENTIAL L.L.C.
*M. BRIDGE & SON
CORPORATE CENTER DRIVE
ST. LOUIS, MISSOURI 63005
PHONE (314) 537-2000



WINGHAVEN™
HAWTHORNE VILLAGE

STORM SEWER PROFILES
Design By: G.A.S.
Drawn By: G.A.S.
Checked By: E.A.K.
5800
7-102-99
7

12-22-94
Roger G. Allen
ROGER G. ALLEN
MO. R.L.S. NO. 2185

SEWER AS-BUILTS