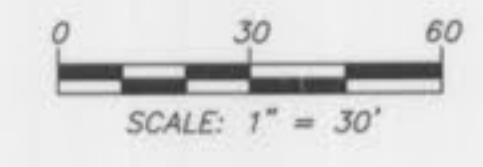


# AS-BUILT LOT 1 - WOODBURY PLACE

O'FALLON, ST. CHARLES COUNTY, MISSOURI  
MAY 24, 2011



### BENCH MARK

- BM - CHISELED MARKS ON THE EAST RIM OF A MANHOLE LOCATED 65 FEET NORTH OF THE NORTH EDGE OF PAVEMENT OF J-MARK DRIVE AND 20 FEET EAST OF THE EAST EDGE OF PAVEMENT OF WOODLAWN AVENUE AS SHOWN BY A SURVEY BY VOLZ INCORPORATED DATED SEPTEMBER 2005. ELEVATION = 582.25
- TBM - CHISELED MARKS ON THE EAST RIM OF A MANHOLE LOCATED 63 FEET SOUTH OF THE SOUTH EDGE OF PAVEMENT OF JUSTINE DRIVE AND 6 FEET WEST OF THE EAST EDGE OF PAVEMENT OF CRESTVIEW DRIVE. ELEVATION = 601.93
- TBM - CHISELED SQUARE ON THE NORTHWEST CORNER OF AN ELECTRIC TRANSFORMER PAD LOCATED 43 FEET NORTHWEST OF THE NORTHWEST BUILDING CORNER OF 714 WOODLAWN AVENUE. ELEVATION = 588.72

### UTILITY NOTES

- WATER**  
CITY OF O'FALLON  
100 N MAIN ST.  
O'FALLON, MO 63366  
CONTACT: 636-281-2858  
8" LINE ALONG THE WEST SIDE OF WOODLAWN AVENUE
- ELECTRIC**  
AMEREN UE  
200 CALLAHAN ROAD  
WENTZVILLE, MO 63385  
CONTACT: JOHN CLARK 636-639-8312  
AS SHOWN
- GAS**  
LACLEDE GAS  
6400 GRAHAM ROAD  
ST. LOUIS, MO 63134  
CONTACT: KENT TRADWENT 314-522-2297  
LINE ALONG THE WEST SIDE OF WOODLAWN AVENUE
- TELEPHONE**  
CENTURYTEL  
1151 CENTURYTEL DRIVE, BLDG A  
WENTZVILLE, MO 63385  
CONTACT: MICHELE GERTEISEN 636-332-7392  
AS SHOWN
- TELEVISION**  
CHARTER COMMUNICATIONS  
815 CHARTER COMMONS DRIVE  
TOWN AND COUNTRY, MO 63017  
CONTACT: JOHN GRANT 636-387-6642  
AS SHOWN
- STORM SEWER**  
CITY OF O'FALLON  
100 N MAIN ST.  
O'FALLON, MO 63366  
CONTACT: 636-281-2858  
AS SHOWN
- SANITARY SEWER**  
CITY OF O'FALLON  
100 N MAIN ST.  
O'FALLON, MO 63366  
CONTACT: 636-281-2858  
AS SHOWN

### LEGEND

E	ELECTRIC LINE
T	TELEPHONE LINE
TV	TELEVISION LINE
UE	UNDERGROUND ELECTRIC LINE
UT	UNDERGROUND TELEPHONE LINE
UFO	UNDERGROUND FIBER OPTIC LINE
SS	SANITARY SEWER LINE
S	STORM SEWER LINE
G	GAS LINE
W	WATER LINE
A	ANCHOR
---	TREE & BRUSH LINE
UP	UTILITY POLE
LS	LIGHT STANDARD
FP	FLAGPOLE
A/C	UNDERGROUND ROOF DRAIN
N	AIR CONDITIONER
BOL	BOLLARD LIGHT
EP	ELECTRIC PEDESTAL
ET	ELECTRIC TRANSFORMER
TP	TELEPHONE PEDESTAL
TVP	TELEVISION PEDESTAL
WM	WATER METER
WV	WATER VALVE
FH	FIRE HYDRANT
LD	FIRE DEPARTMENT CONNECTION
C.O.	LAWN HYDRANT
CMP	CLEANOUT
OPP	CORRUGATED METAL PIPE
RCP	CORRUGATED PLASTIC PIPE
RD	REINFORCED CONCRETE PIPE
HDPE	HIGH DENSITY POLYETHYLENE PIPE
PVC	POLYVINYL CHLORIDE PIPE
F.E.S.	FLARED END SECTION
+	IRON

VALVE #	TOP NUT ELEVATION
1	585.32
2	581.73
3	586.15
4	587.92
5	589.36
6	589.02
7	593.35
8	593.35
9	592.59
10	594.27
11	594.40
12	589.77
13	590.01

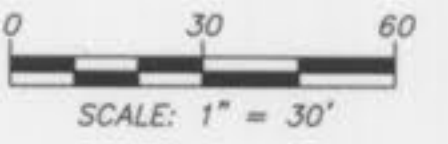
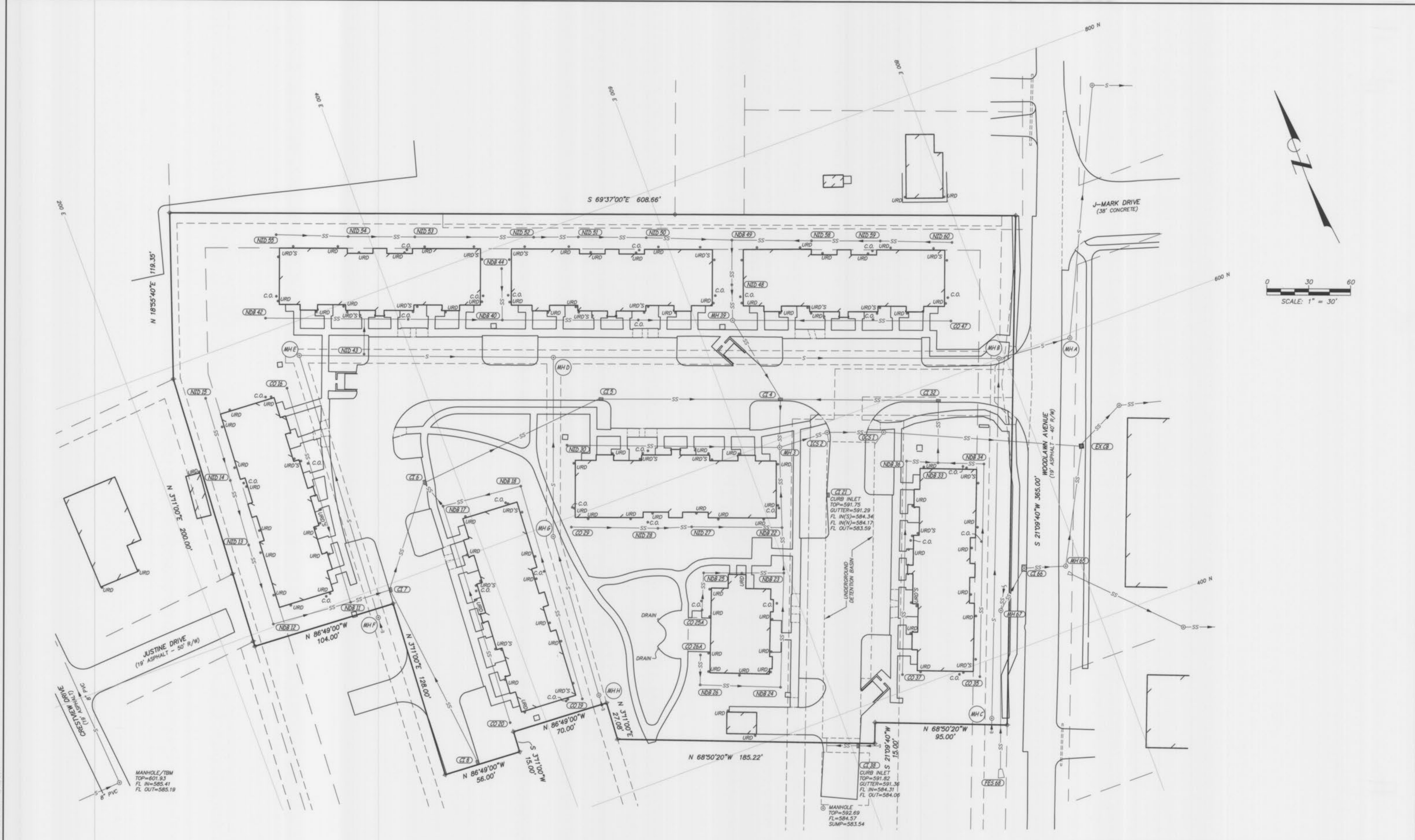
POINT NUMBER	NORTH	EAST	ELEVATION	DESCRIPTION
CP2	382.75	780.36	588.45	DRILL HOLE
CP5	595.42	221.84	599.69	IRON
CP7	822.18	495.34	595.77	IRON
CP2847	554.65	324.19	596.36	DRILL HOLE
CP2848	755.05	360.77	596.54	DRILL HOLE
CP2849	593.62	723.84	591.91	DRILL HOLE
CP4453	879.89	270.16	597.60	SPIKE
CP4454	247.47	490.33	594.80	DRILL HOLE
CP4682	438.58	576.81	593.75	DRILL HOLE

SHEET INDEX	
1	SITE AS-BUILT
2	SEWER AS-BUILT PLAN
3-6	SEWER AS-BUILT PROFILES



SITE AS-BUILT  
**LOT 1 - WOODBURY PLACE**  
O'FALLON, ST. CHARLES COUNTY, MISSOURI

Surveyed: CGH		Revised:	
Drawn: CGH		1113 Fay Street Columbia, Missouri 573-449-2646	
Checked: FEC		Missouri Land Surveying Corporation # 2004004672	
Scale: 1" = 30'	Date: MAY 24, 2011	Job: 11732	Sheet: 1 of 6



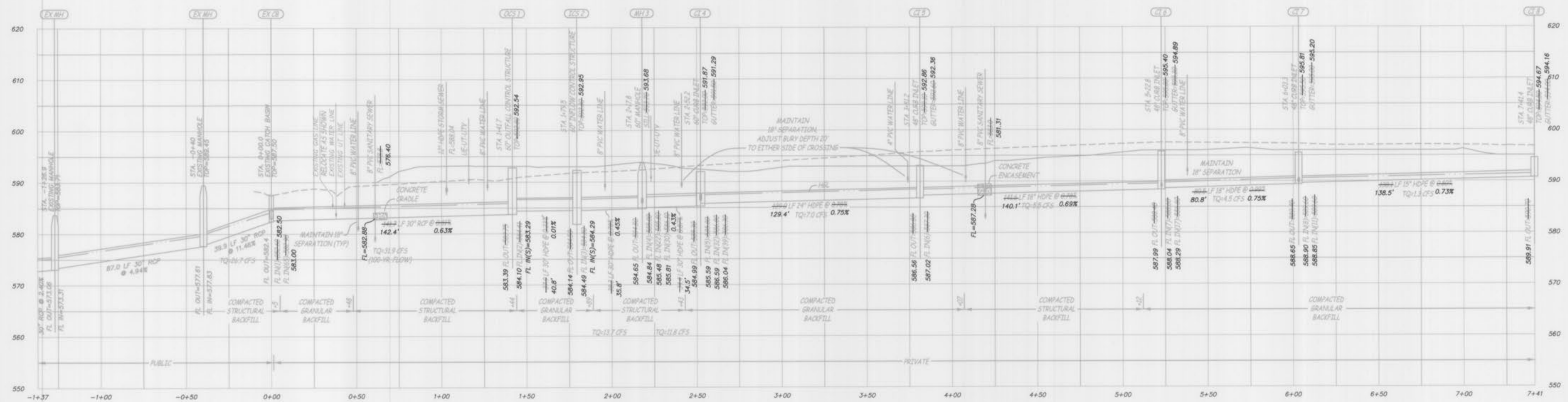
MANHOLE/TBM  
TOP=601.93  
FL IN=585.41  
FL OUT=585.19

MANHOLE  
TOP=592.69  
FL=584.57  
SUMP=583.54

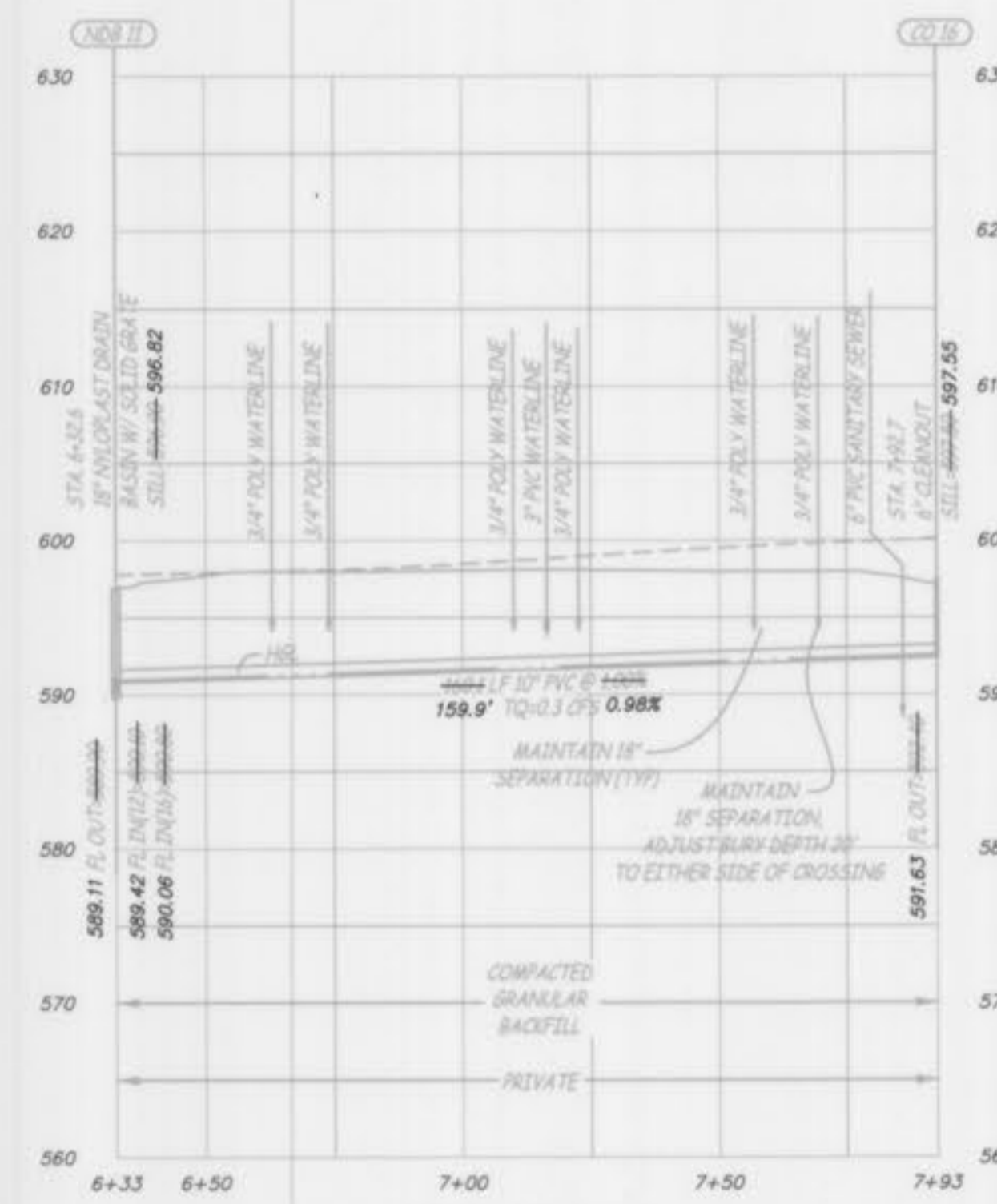
CB 38  
CURB INLET  
TOP=591.82  
GUTTER=591.36  
FL IN=584.31  
FL OUT=584.09

CB 41  
CURB INLET  
TOP=591.75  
GUTTER=591.29  
FL IN(S)=584.34  
FL IN(N)=584.17  
FL OUT=583.59

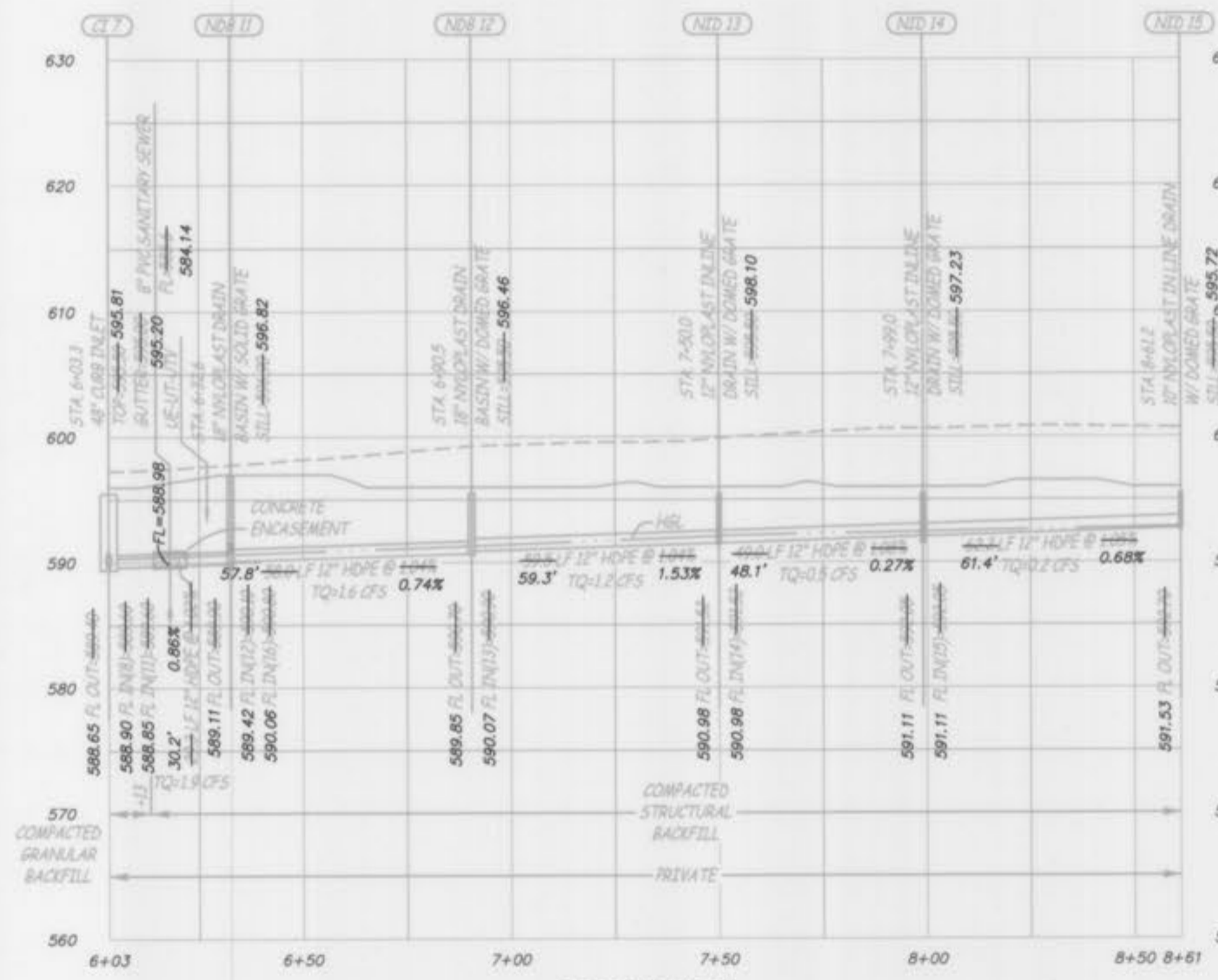
	SEWER AS-BUILT PLAN		
	<b>LOT 1 - WOODBURY PLACE</b>		
O'FALLON, ST. CHARLES COUNTY, MISSOURI			
Surveyed: CGH			Revised
Drawn: CGH	1113 Fay Street Columbia, Missouri 573 - 449 - 2646		
Checked: FEC	Missouri Land Surveying Corporation # 2004004672		
Scale 1" = 30'	Date MAY 24, 2011	Job 11732	Sheet 2 of 6



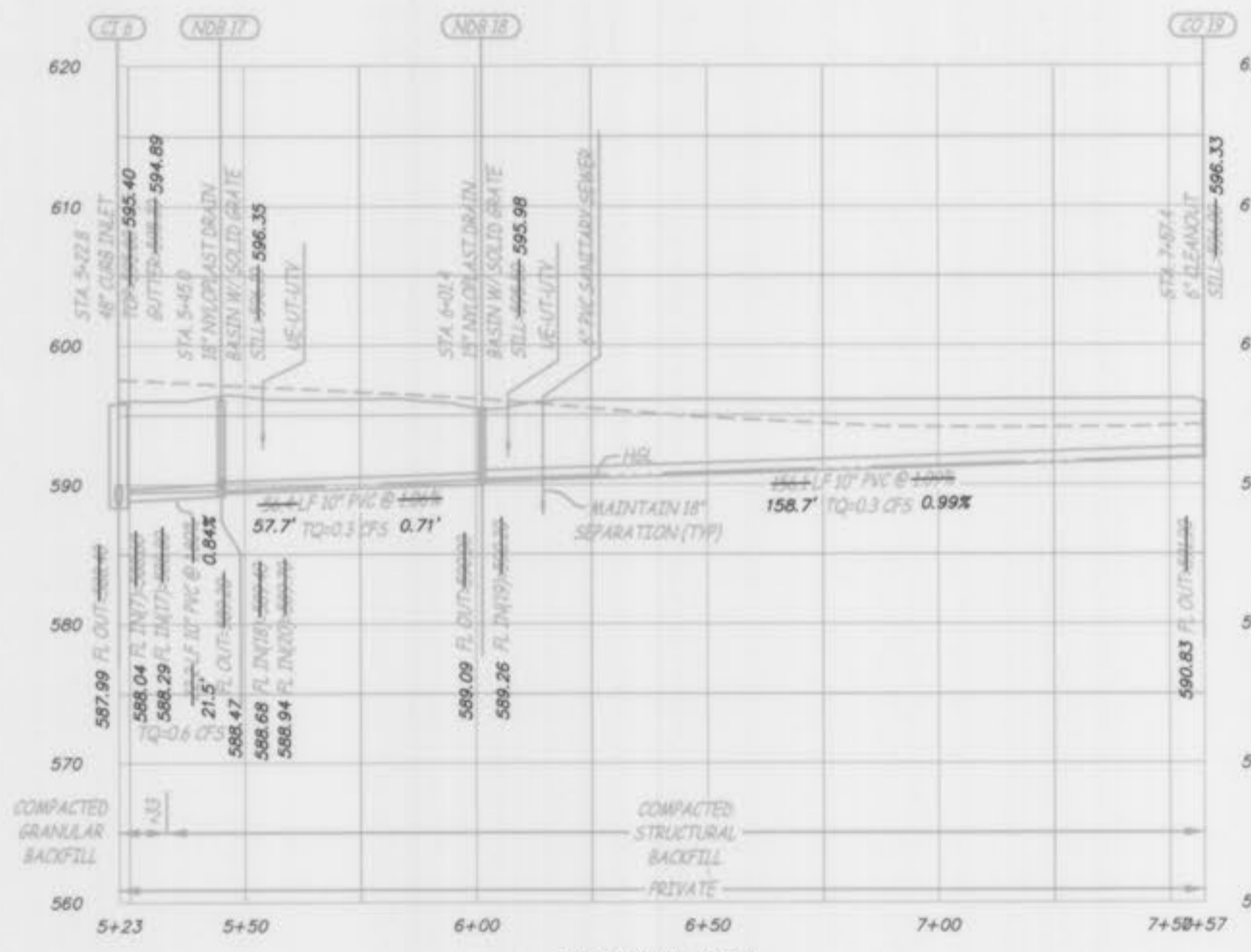
EXISTING MANHOLE THRU CI 8  
SCALE - HORIZ. 1" = 30'  
VERT. 1" = 10'



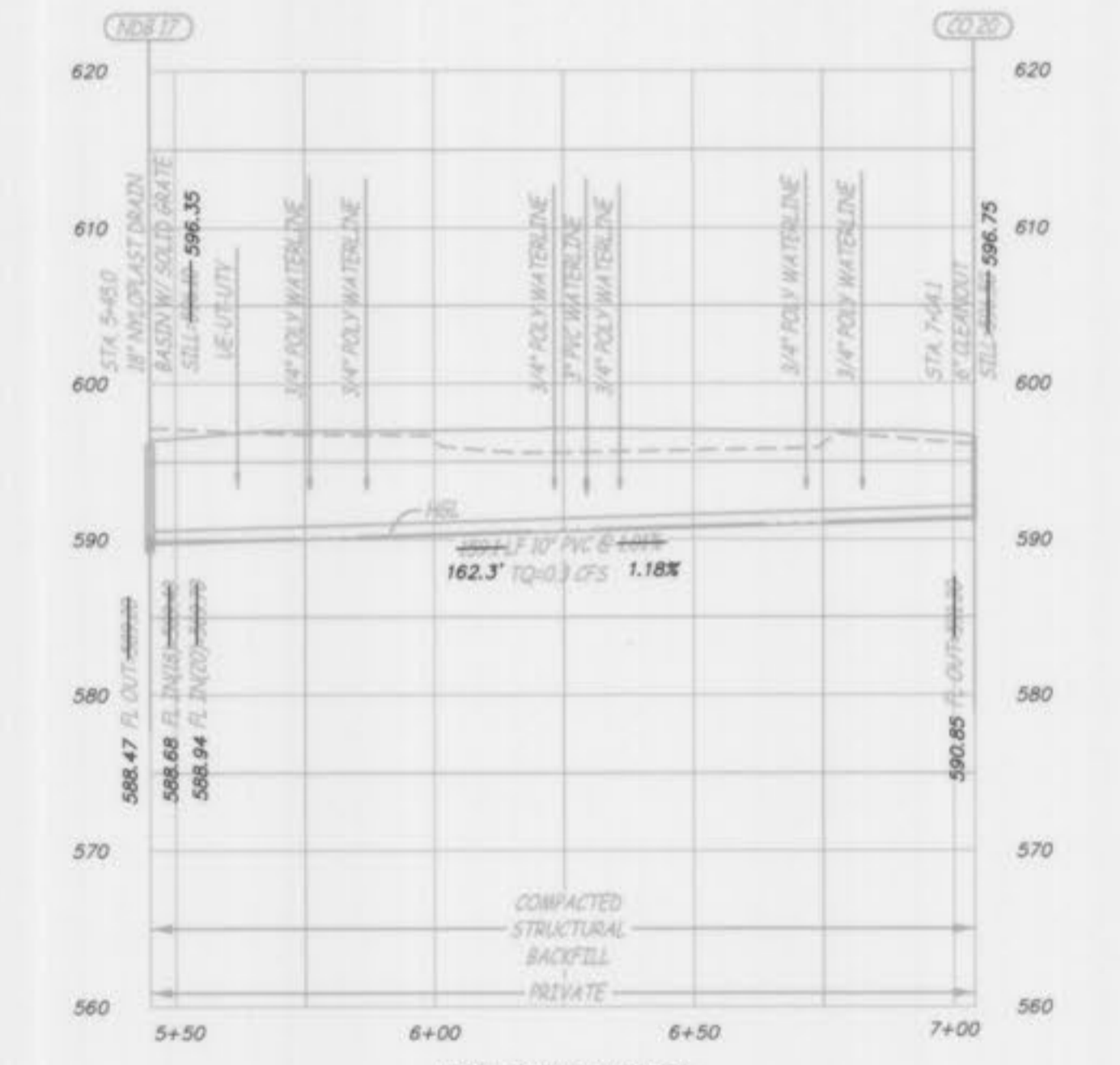
NDB 11 THRU CO 16  
SCALE - HORIZ. 1" = 30'  
VERT. 1" = 10'



CI 7 THRU NID 15  
SCALE - HORIZ. 1" = 30'  
VERT. 1" = 10'



CI 6 THRU CO 19  
SCALE - HORIZ. 1" = 30'  
VERT. 1" = 10'

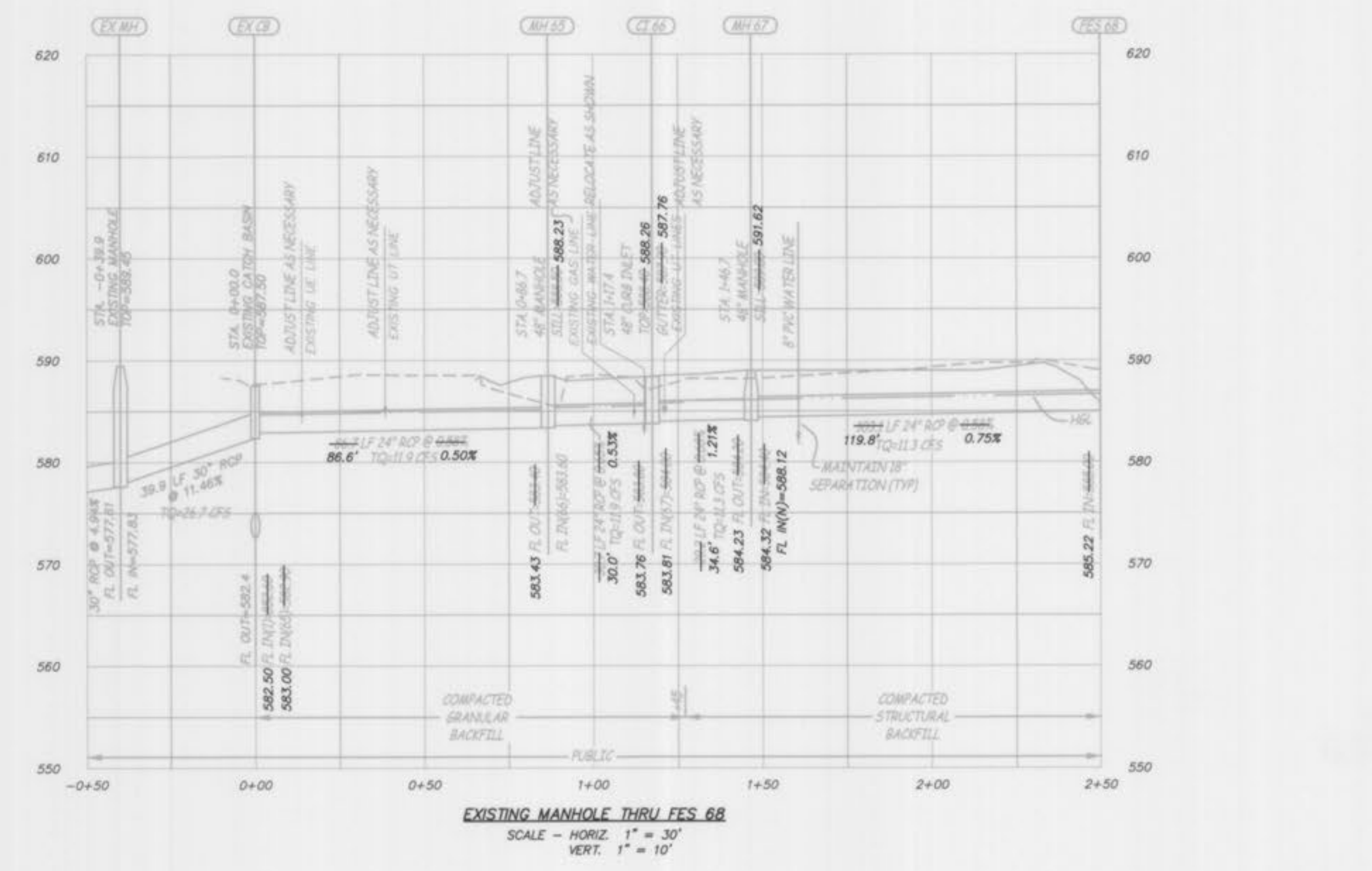
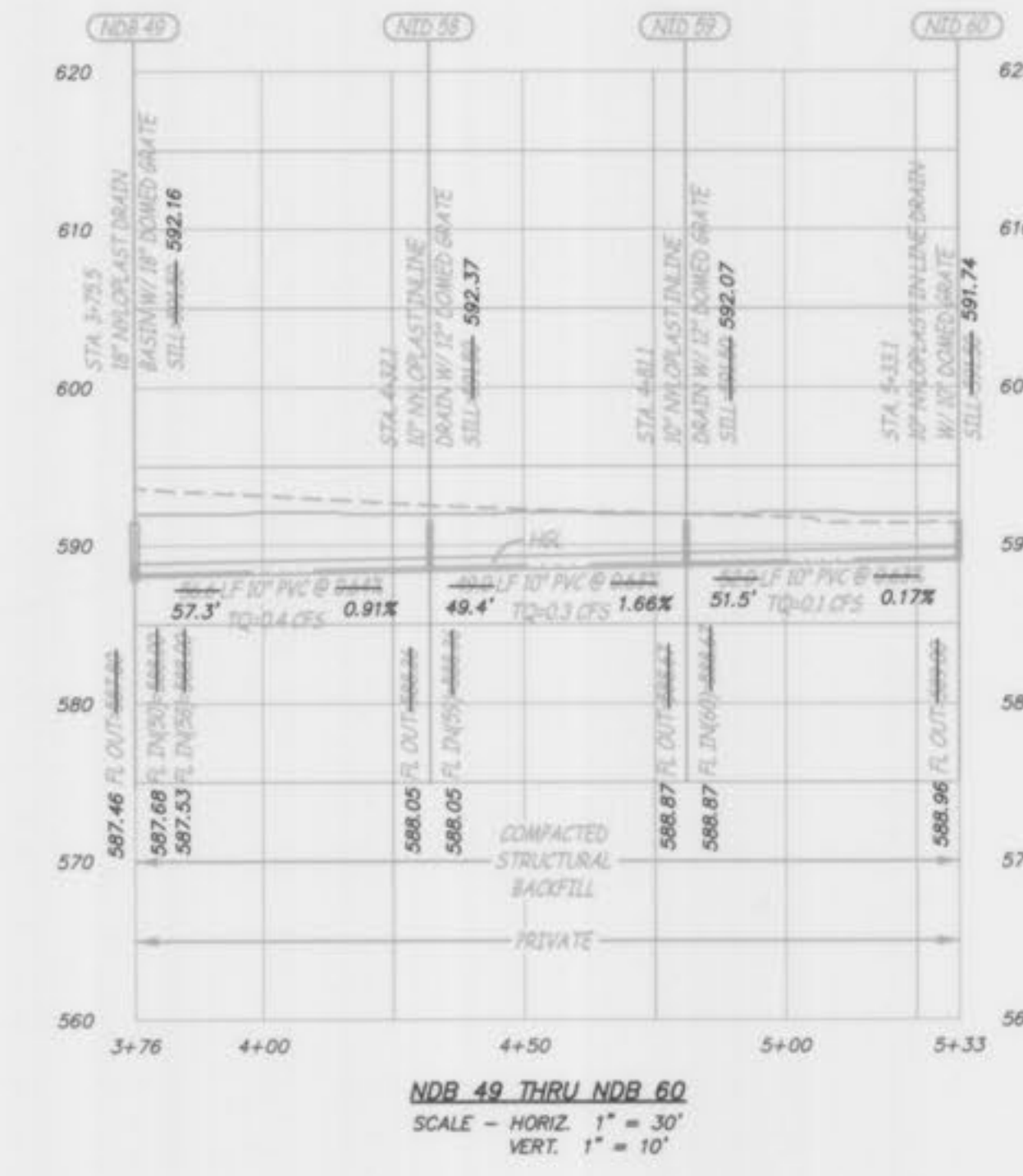
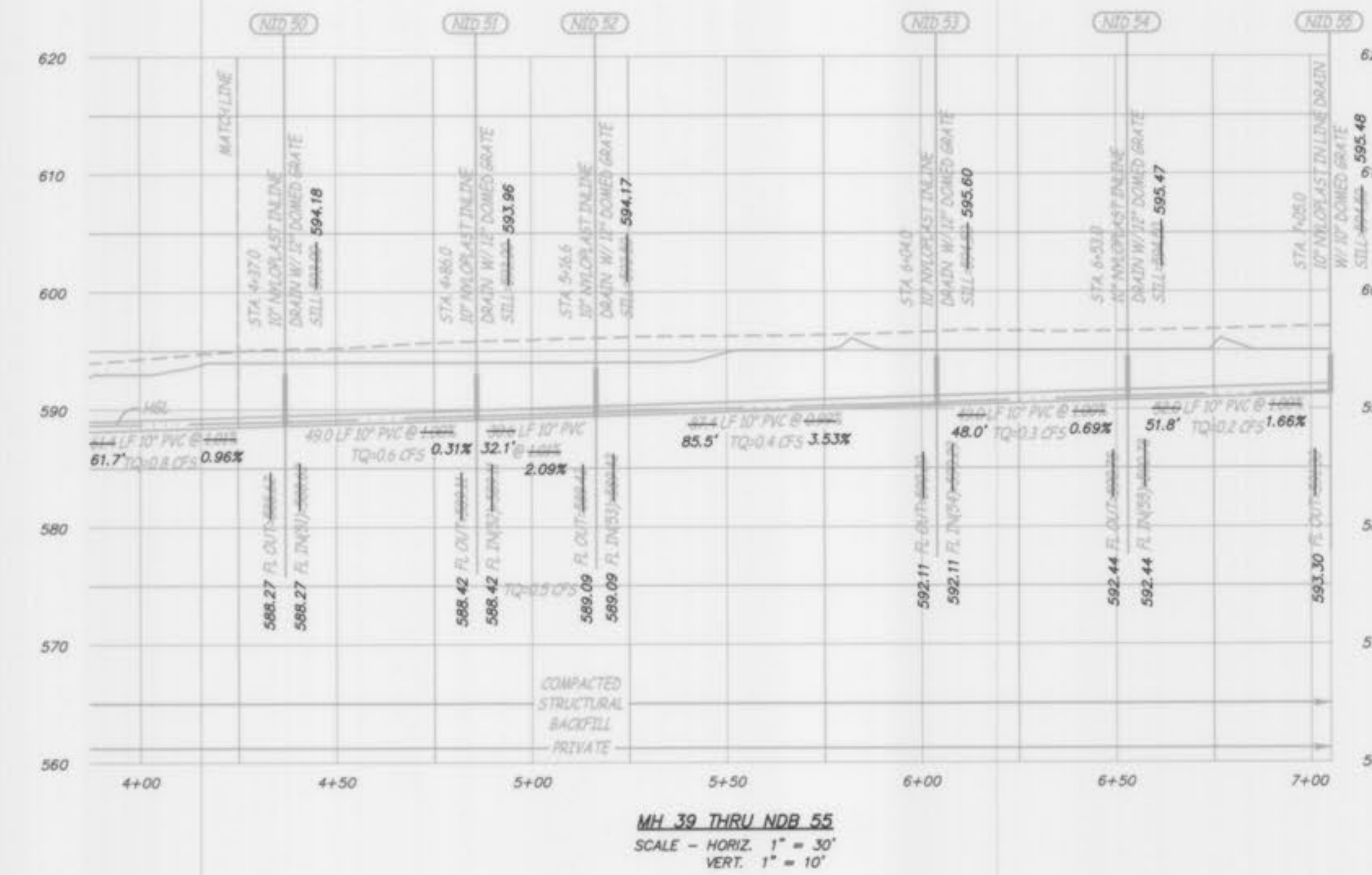
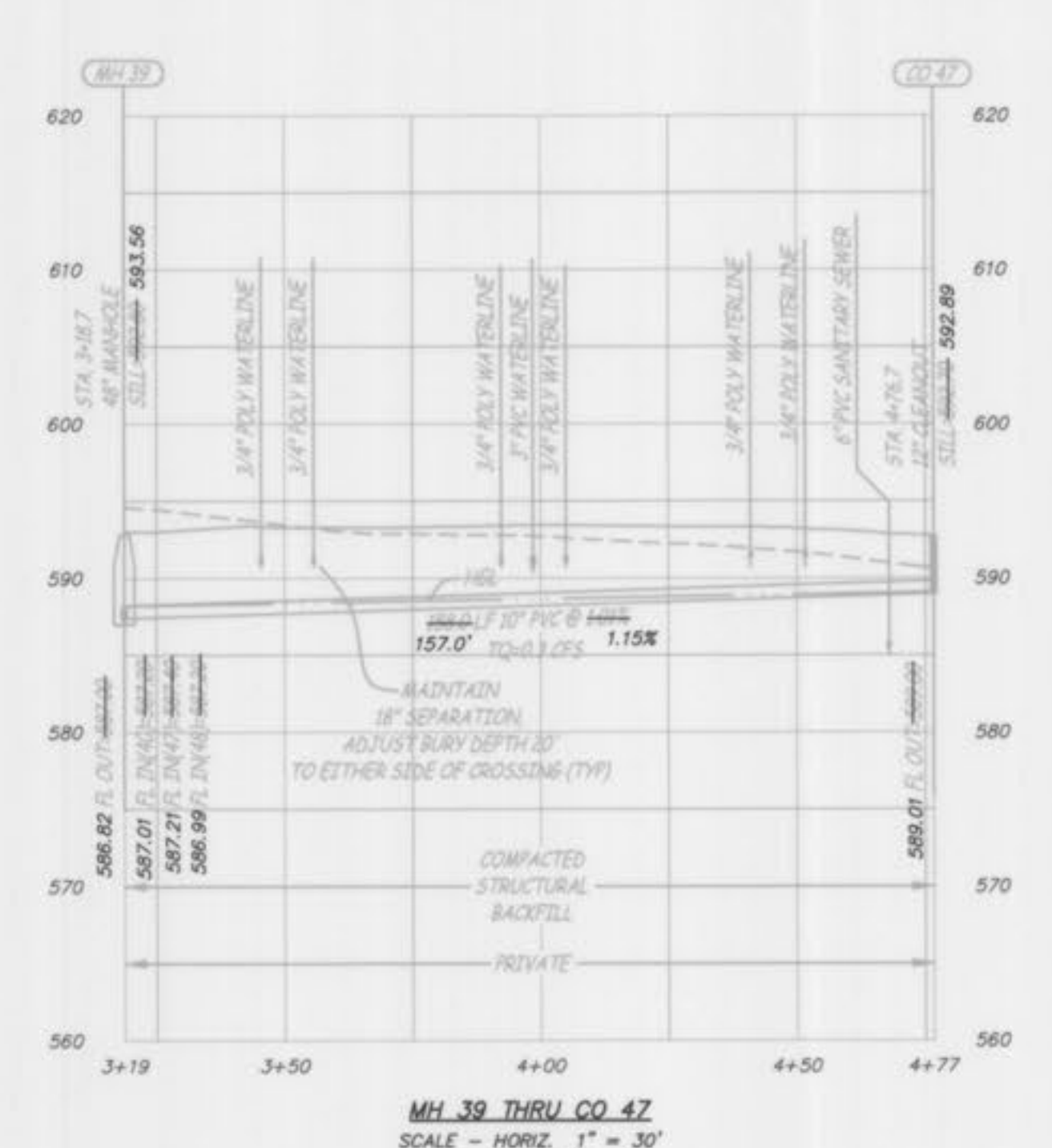
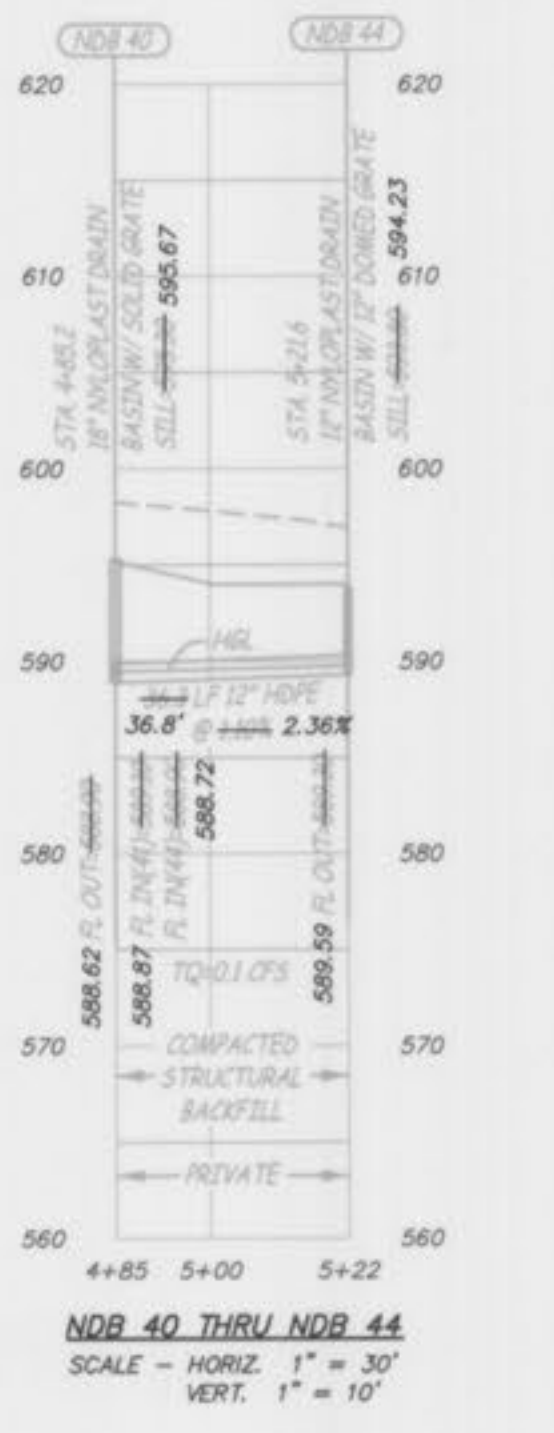
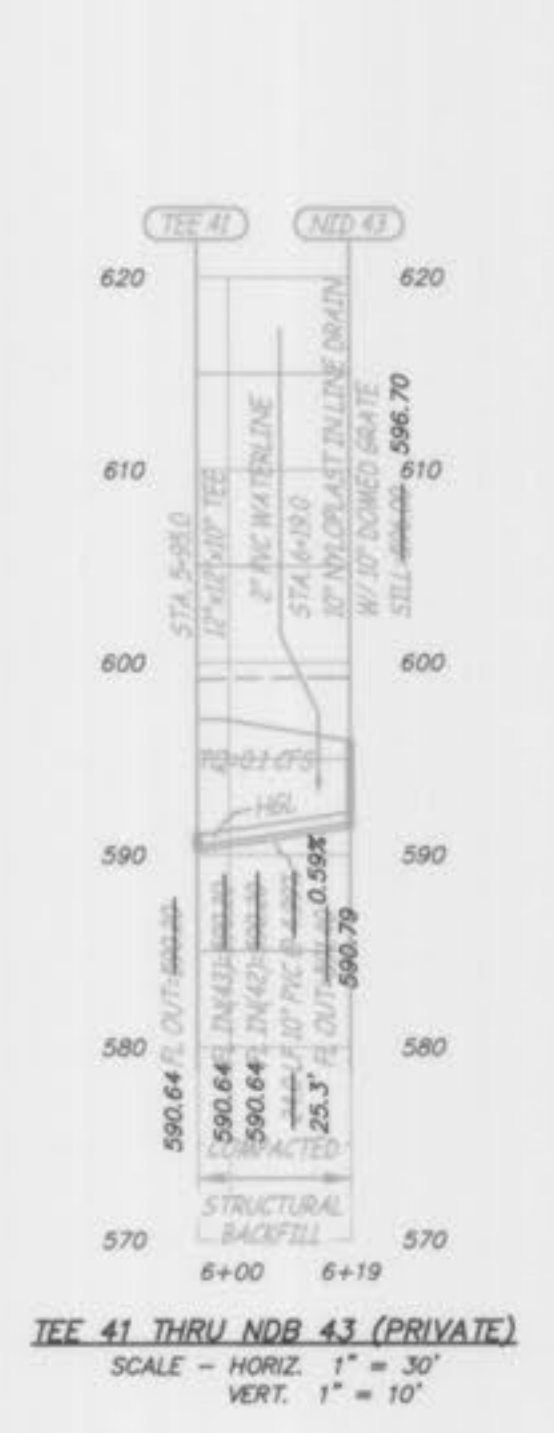
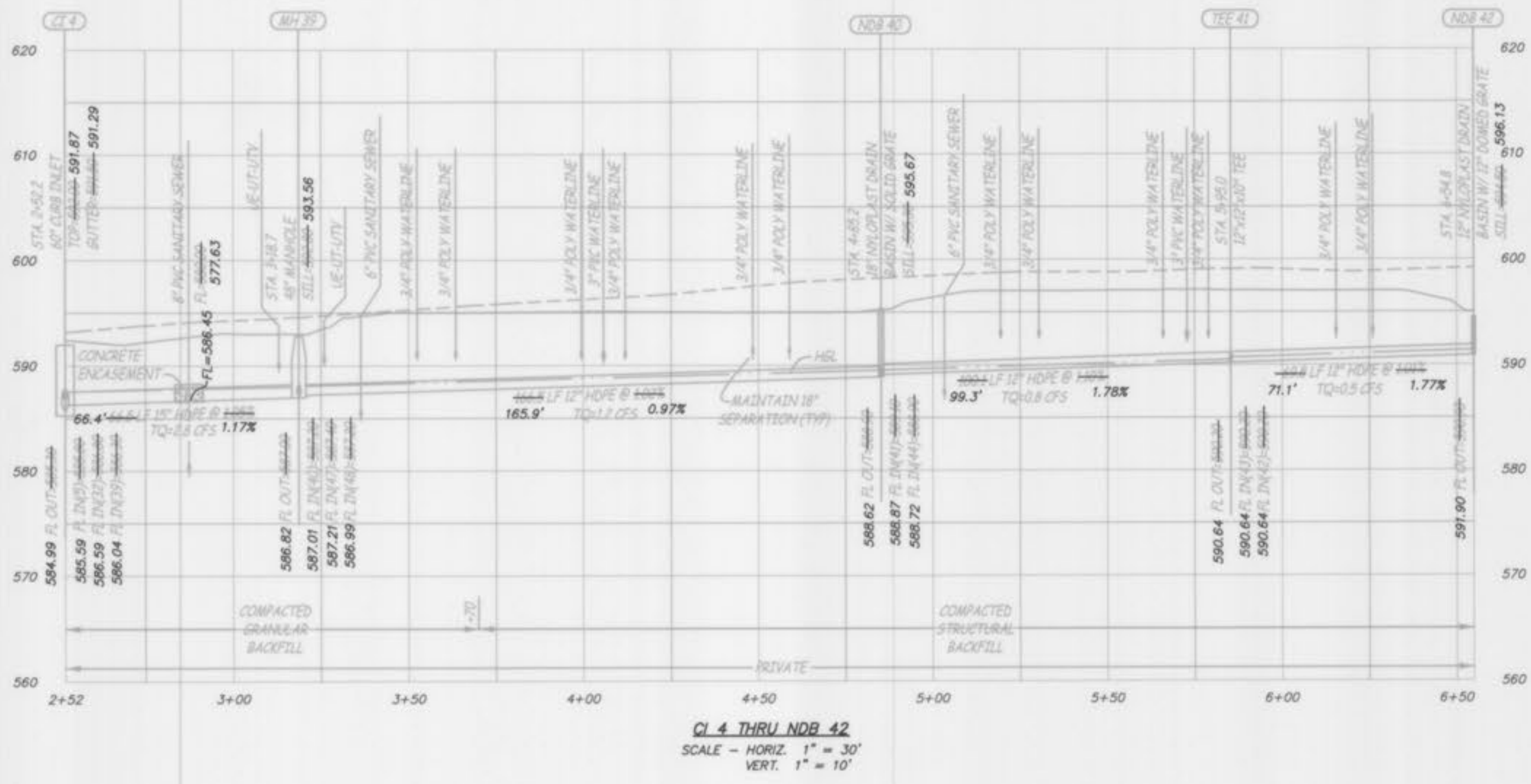


NDB 17 THRU CO 20  
SCALE - HORIZ. 1" = 30'  
VERT. 1" = 10'

	SEWER AS-BUILT PROFILES			
	LOT 1 - WOODBURY PLACE			
O'FALLON, ST. CHARLES COUNTY, MISSOURI				
Surveyed: CGH Drawn: CGH Checked: FEC		1113 Fay Street Columbia, Missouri 573-449-2646 Missouri Land Surveying Corporation # 2004004672	Revised 15 AUG 2011	
Scale 1" = 30'	Date MAY 24, 2011	Job 11732	Sheet 3 of 6	

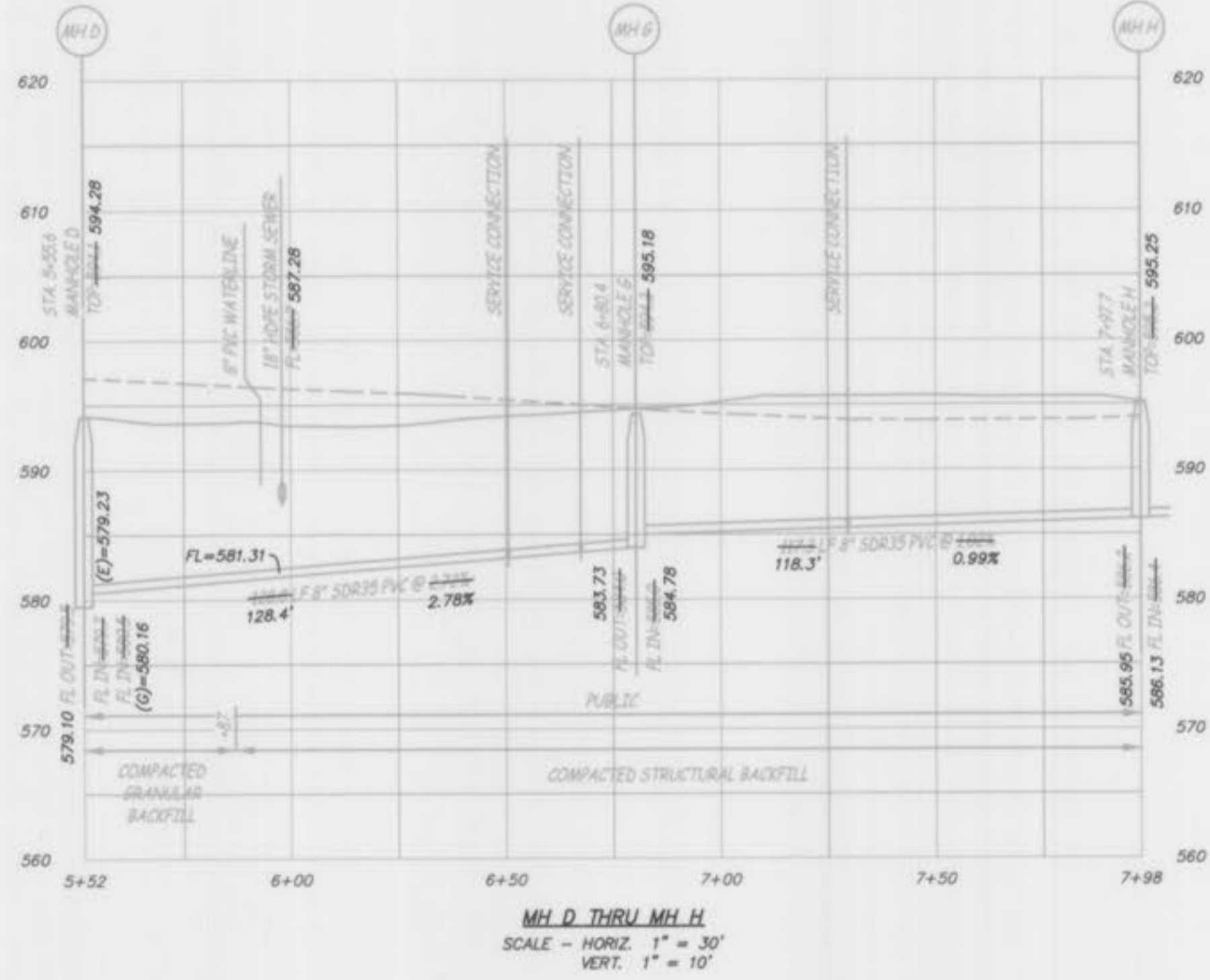
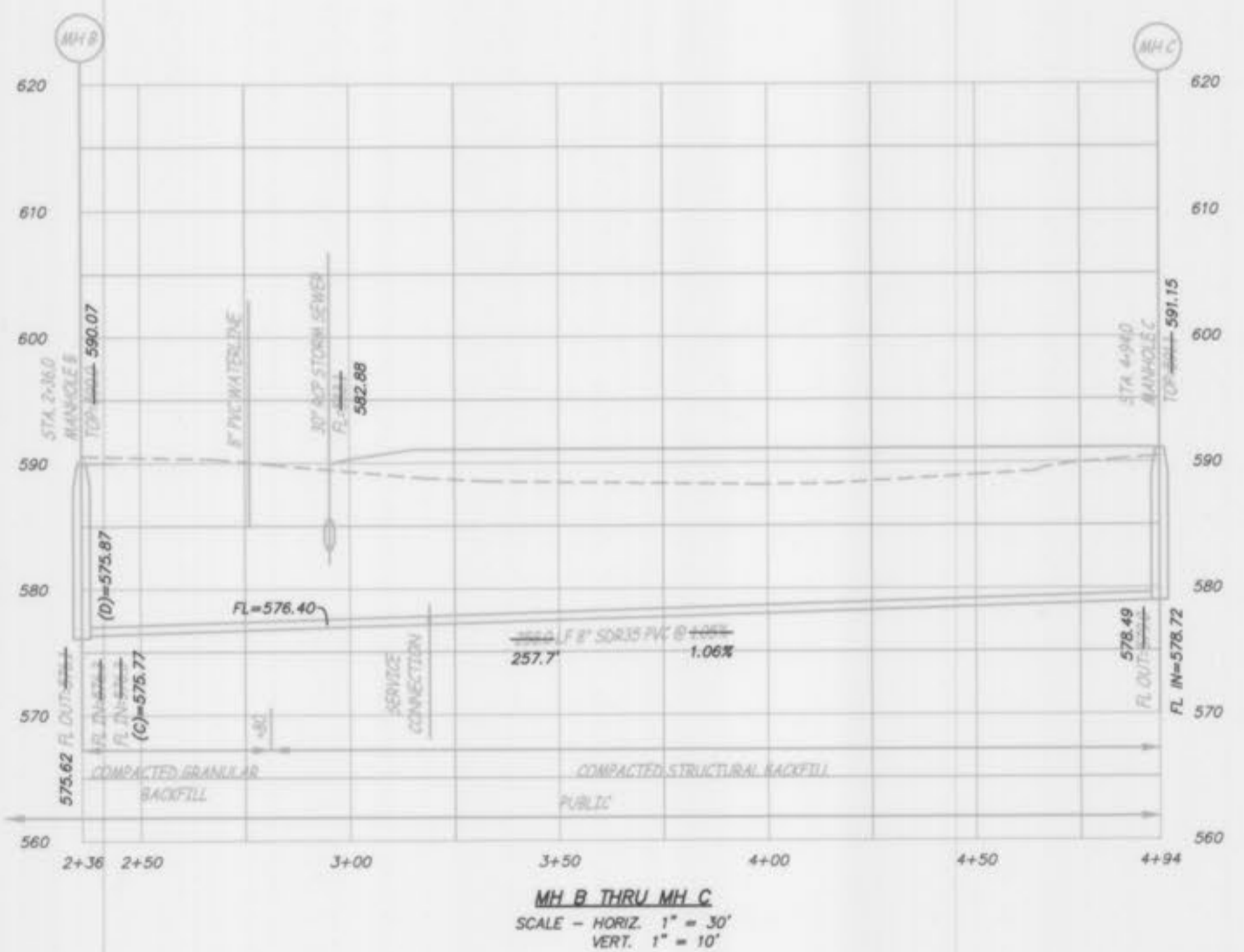
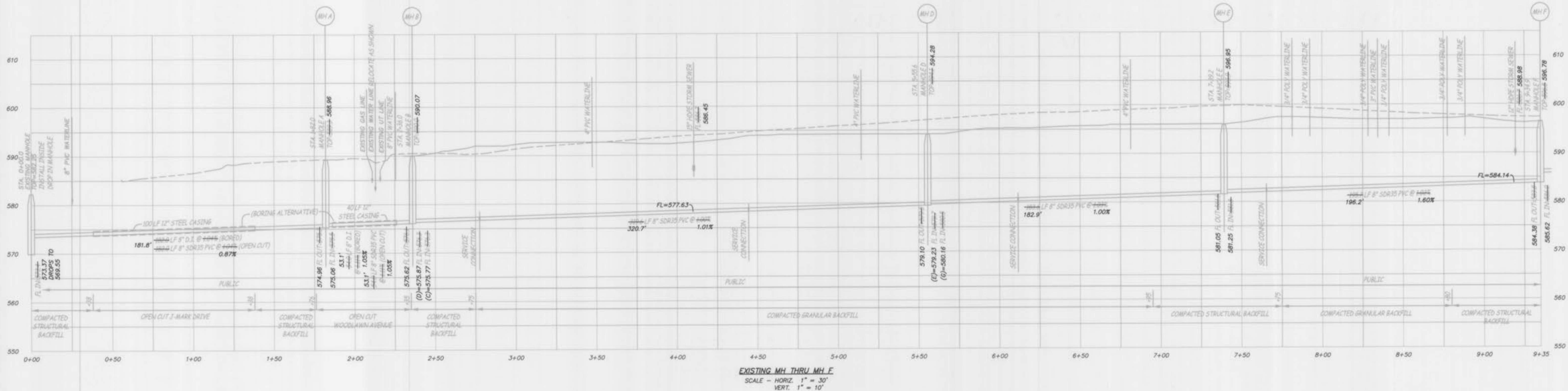
Woodbury Place Lot 1 As-builts p# 3 of 6





	SEWER AS-BUILT PROFILES			
	<b>LOT 1 - WOODBURY PLACE</b>			
OTALLON, ST. CHARLES COUNTY, MISSOURI				
Surveyed: CGH		Revised 15 AUG 2011		
Drawn: CGH		1113 Fay Street Columbia, Missouri 573 - 449 - 2646		
Checked: FEC	Missouri Land Surveying Corporation # 2004004672			
Scale 1" = 30'	Date MAY 24, 2011	Job 11732	Sheet 5 of 6	

Woodbury Place Lot 1 As-builts pg 5 of 6



	SEWER AS-BUILT PROFILES			
	<b>LOT 1 - WOODBURY PLACE</b>			
O'FALLON, ST. CHARLES COUNTY, MISSOURI				
Surveyed: CGH Drawn: CGH Checked: FEC		<b>Engineering Surveys &amp; Services</b> 1113 Fay Street Columbia, Missouri 573 - 449 - 2646 <small>Missouri Land Surveying Corporation # 2004000672</small>		Revised 15 AUG 2011
Scale 1" = 30'		Date MAY 24, 2011	Job 11732	Sheet 6 of 6

Woodbury Place Lot 1 As-builts pg 6 of 6