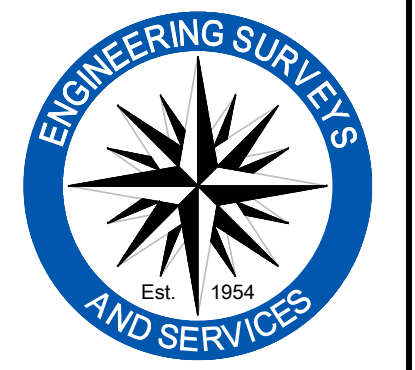


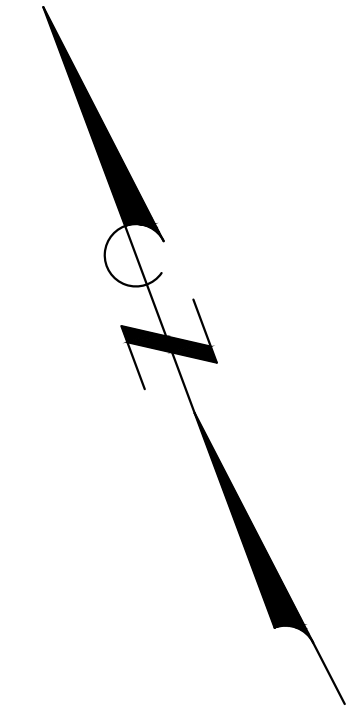
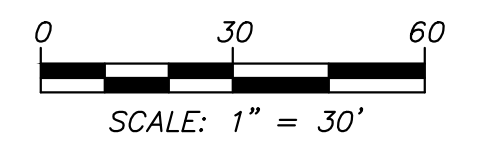
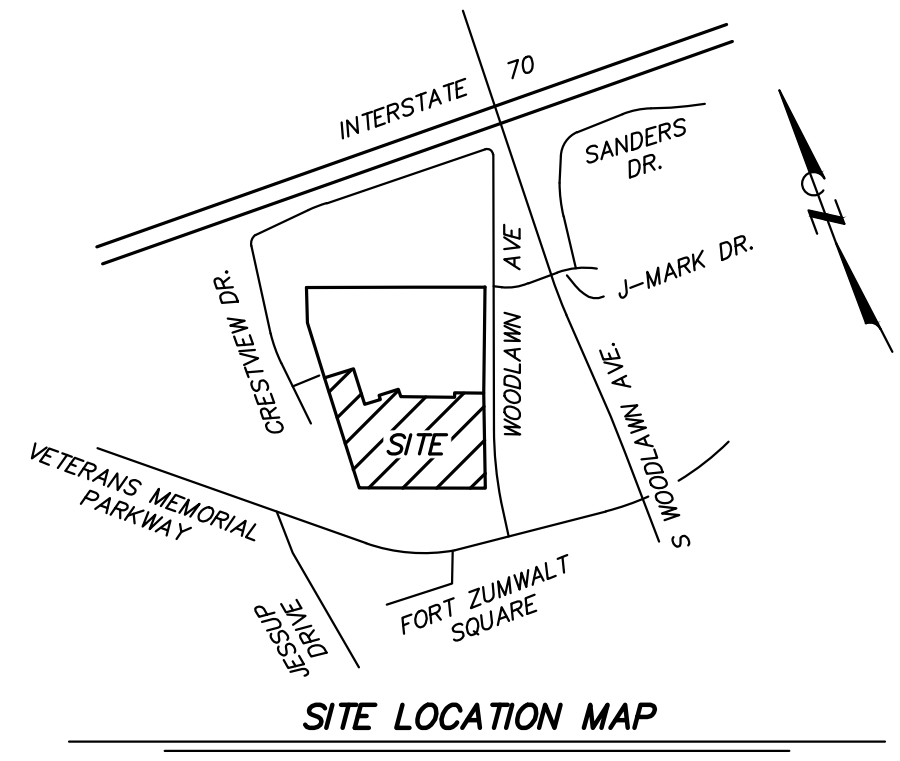
AS-BUILT LOT 2 - WOODBURY PLACE

O'FALLON, ST. CHARLES COUNTY, MISSOURI

DECEMBER 23, 2015



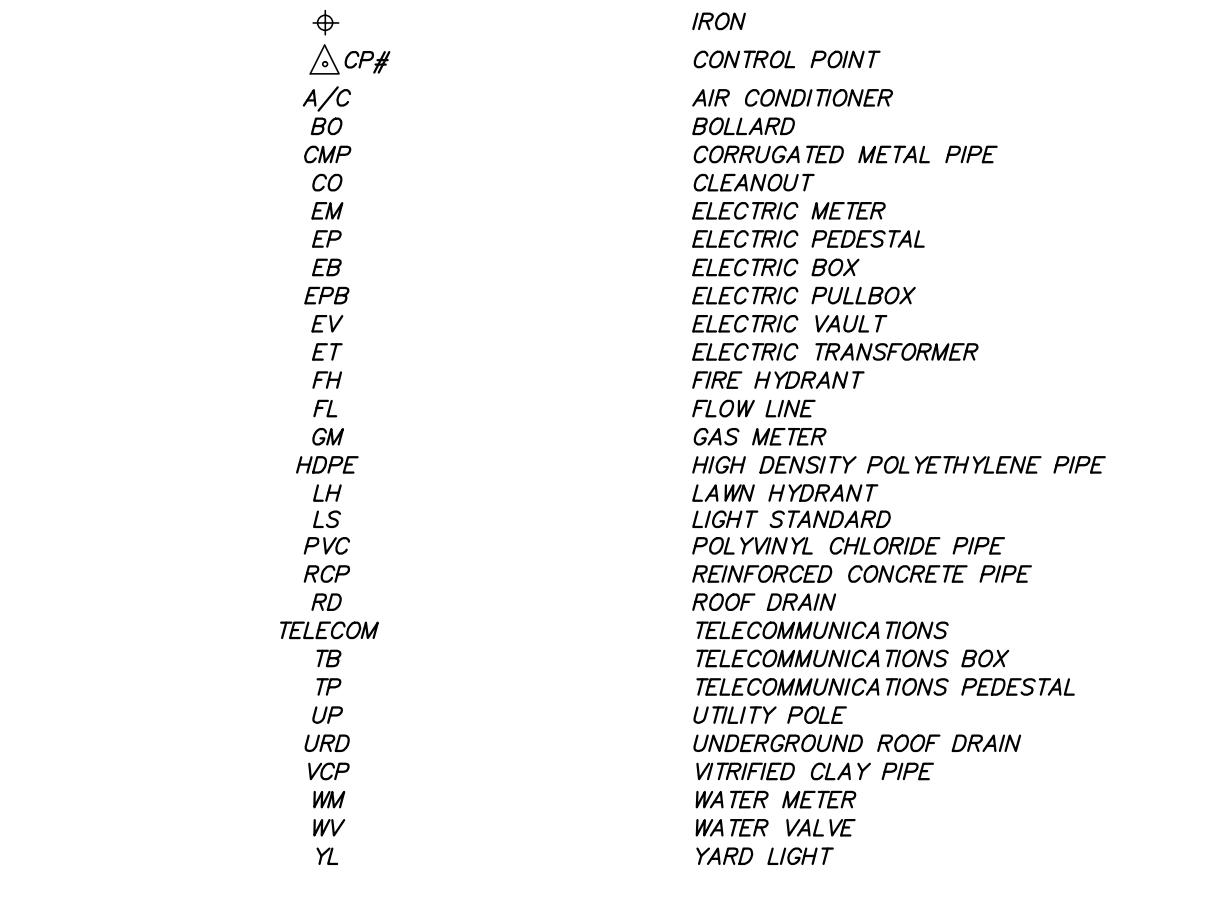
Engineering Surveys and Services
 Consulting Engineers, Scientists, and Land Surveyors
 Analytical and Material Laboratories
 1113 Ego Street, Columbia, Missouri 65201
 573-449-2646 · www.ESSS-llc.com
 Other Offices:
 Jefferson City, Missouri · St. Louis, Missouri
 Missouri Land Surveying Corporation # 200404672



VALVE #	TOP NUT ELEVATION
1	591.97
2	591.23
3	590.59
4	590.79
5	590.62
6	589.40
7	588.98
8	588.16

LEGEND

—E—	PROPERTY LINE
—T—	ELECTRIC LINE
—UE—	UNDERGROUND ELECTRIC LINE
—UT—	UNDERGROUND TELECOMMUNICATIONS LINE
—UFO—	UNDERGROUND FIBER OPTIC LINE
—S—	SANITARY SEWER LINE
—SS—	STORM SEWER LINE
—G—	GAS LINE
—W—	WATER LINE
—X—	FENCE
—	TREE & BRUSH LINE
—750—	EXISTING CONTOUR
—	ANCHOR
⊕	IRON
⊕ CP#	CONTROL POINT
A/C	AIR CONDITIONER
BO	BOLLARD
OMP	CORRUGATED METAL PIPE
CO	CLEANOUT
EM	ELECTRIC METER
EP	ELECTRIC PEDESTAL
EB	ELECTRIC BOX
EPB	ELECTRIC PULLBOX
EV	ELECTRIC VAULT
ET	ELECTRIC TRANSFORMER
FH	FIRE HYDRANT
FL	FLOW LINE
GM	GAS METER
HOPE	HIGH DENSITY POLYETHYLENE PIPE
LH	LAWN HYDRANT
LS	LIGHT STANDARD
PVC	POLYVINYL CHLORIDE PIPE
RCP	REINFORCED CONCRETE PIPE
RD	ROOF DRAIN
TELECOM	TELECOMMUNICATIONS
TB	TELECOMMUNICATIONS BOX
TP	TELECOMMUNICATIONS PEDESTAL
UP	UTILITY POLE
URD	UNDERGROUND ROOF DRAIN
VCP	VITRIFIED CLAY PIPE
WM	WATER METER
WV	WATER VALVE
YL	YARD LIGHT



BENCH MARK

BM - NATIONAL GEODETIC SURVEY MONUMENT F-149.
 ELEVATION = 542.60

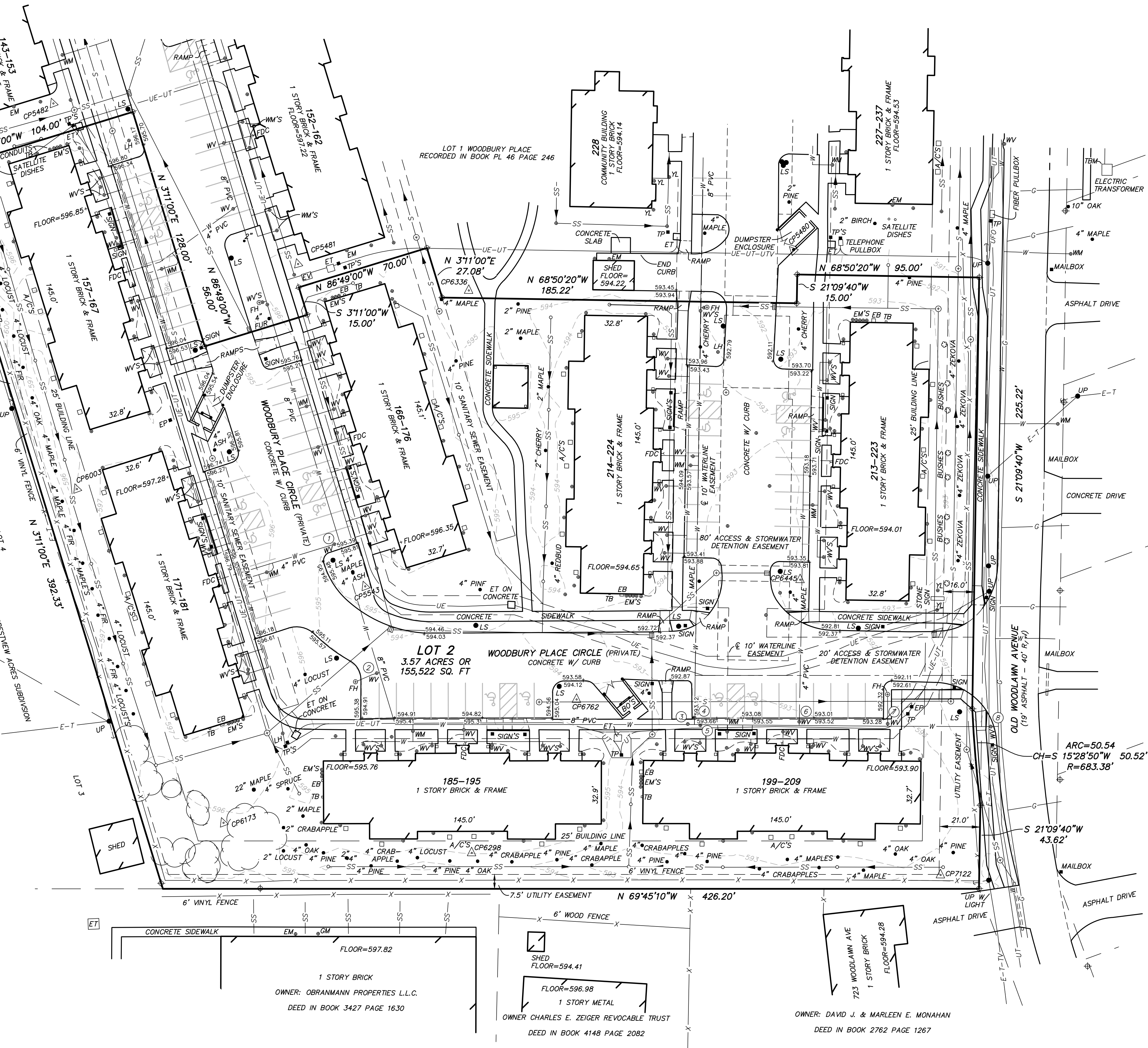
BM - CHISELED MARKS ON THE EAST RIM OF A MANHOLE LOCATED 65 FEET NORTH OF THE NORTH EDGE OF PAVEMENT OF J-MARK DRIVE AND 20 FEET EAST OF THE EAST EDGE OF PAVEMENT OF WOODLAWN AVENUE AS SHOWN BY A SURVEY BY VOLZ INCORPORATED DATED SEPTEMBER 2005.
 ELEVATION = 582.25

TBM - CHISELED MARKS ON THE EAST RIM OF A MANHOLE LOCATED 63 FEET SOUTH OF THE SOUTH EDGE OF PAVEMENT OF JUSTINE DRIVE AND 6 FEET WEST OF THE EAST EDGE OF PAVEMENT OF CRESTVIEW DRIVE.
 ELEVATION = 601.93

TBM - CHISELED SQUARE ON THE NORTHWEST CORNER OF AN ELECTRIC TRANSFORMER PAD LOCATED 43 FEET NORTHWEST OF THE NORTHWEST BUILDING CORNER OF 714 WOODLAWN AVENUE.
 ELEVATION = 588.72

SURVEY CONTROL POINTS

POINT #	NORTH	EAST	ELEVATION	DESCRIPTION
CP5480	398.71	624.28	593.45	DRILL HOLE
CP5481	481.55	379.17	597.14	IRON
CP5482	604.41	288.27	597.72	IRON
CP6003	411.29	230.17	596.11	IRON
CP6173	221.32	241.65	595.78	SPIKE
CP6298	161.73	357.85	595.01	SPIKE
CP6336	437.74	458.03	595.09	SPIKE
CP6445	236.15	568.15	593.64	SPIKE
CP6762	217.93	436.96	594.61	SPIKE
CP7122	66.17	583.55	592.41	SPIKE



LOT 2 - WOODBURY PLACE
O'FALLON, ST. CHARLES COUNTY, MISSOURI

**THIS MEDIA SHOULD NOT
BE CONSIDERED A
CERTIFIED DOCUMENT
PRELIMINARY
NOT FOR CONSTRUCTION,
BIDDING, RECORDING, OR
PERMIT REVIEW PURPOSES**

FREDERICK E. CARROZ III
PROFESSIONAL LAND SURVEYOR
PLS - 2008018653

Date
DECEMBER 23, 2015

Revised

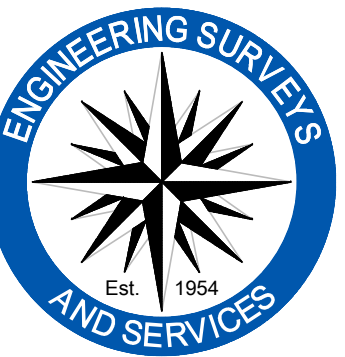
Surveyed: JEP Drawn: MJS

AS-BUILT

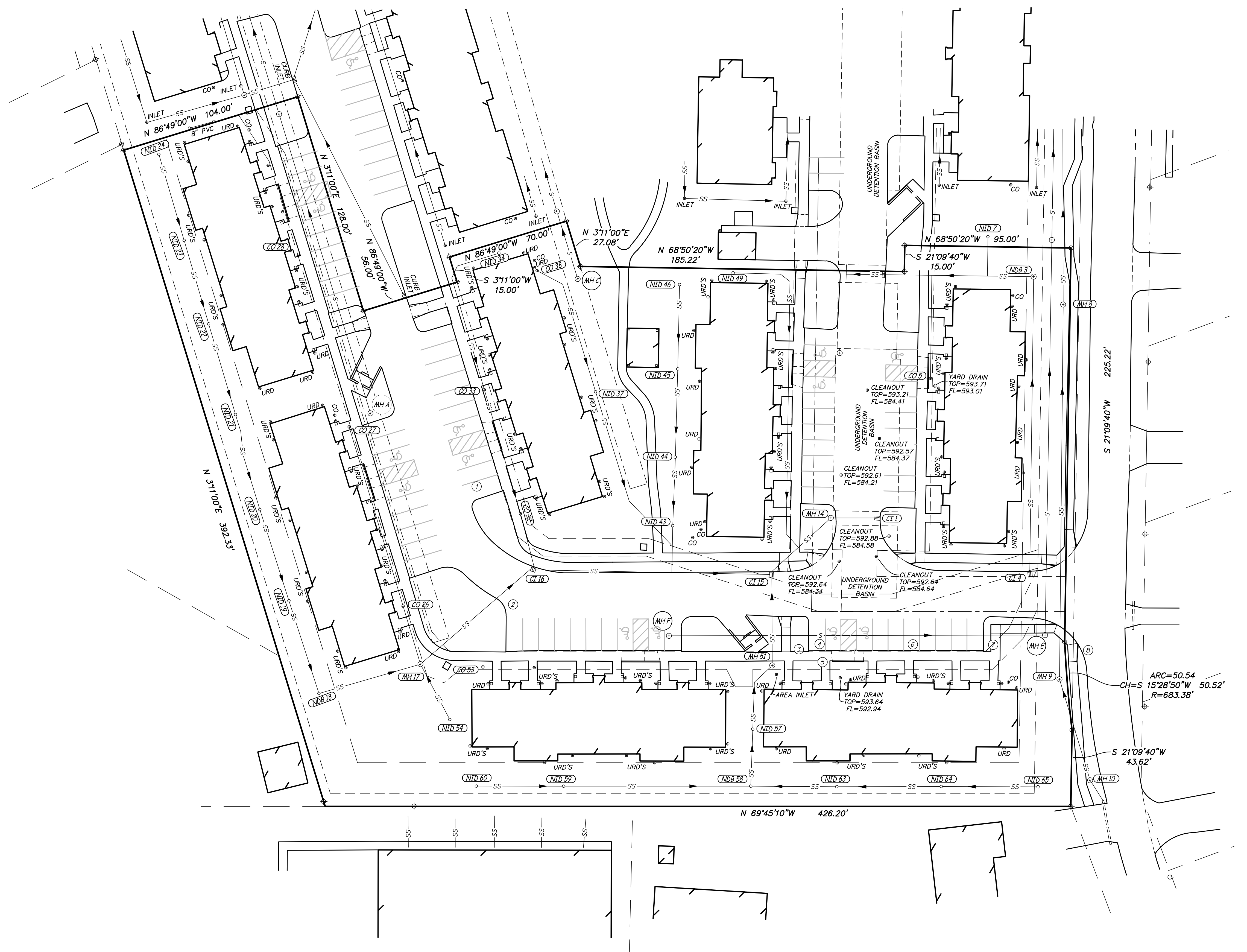
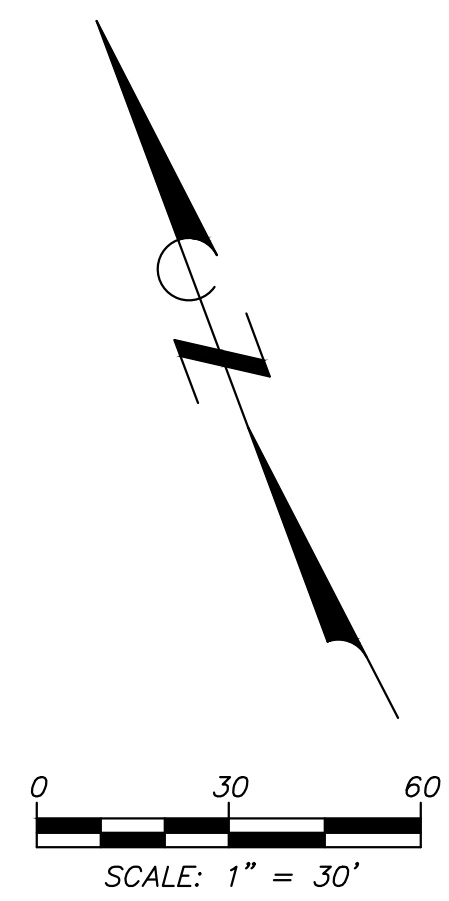
Sheet
V1.01

1 of 6
ES&S PROJECT NO. 13143

F:\CURRENT\DRAWINGS\ES\13143\AS-BUILT.DWG 1/21/2016



Engineering Surveys and Services
 Consulting Engineers, Scientists, and Land Surveyors
 Analytical and Material Laboratories
 1113 Ego Street, Columbia, Missouri 65201
 573-449-2646 - www.ESSS-llc.com
 Other Offices:
 Jefferson City, Missouri - Scullin, Missouri
 Missouri Land Surveying Corporation # 200406072



LOT 2 - WOODBURY PLACE
 OF FALLON, ST. CHARLES COUNTY, MISSOURI

THIS MEDIA SHOULD NOT
 BE CONSIDERED A
 CERTIFIED DOCUMENT
PRELIMINARY
 NOT FOR CONSTRUCTION,
 BIDDING, RECORDING, OR
 PERMIT REVIEW PURPOSES

FREDERICK E. CARROZ III
 PROFESSIONAL LAND SURVEYOR
 PLS - 2008016653

Date
DECEMBER 23, 2015

Revised

Surveyed: JEP Drawn: MJS

AS-BUILT

Sheet
V1.02

2 of 6

ESS&S PROJECT NO. 13143

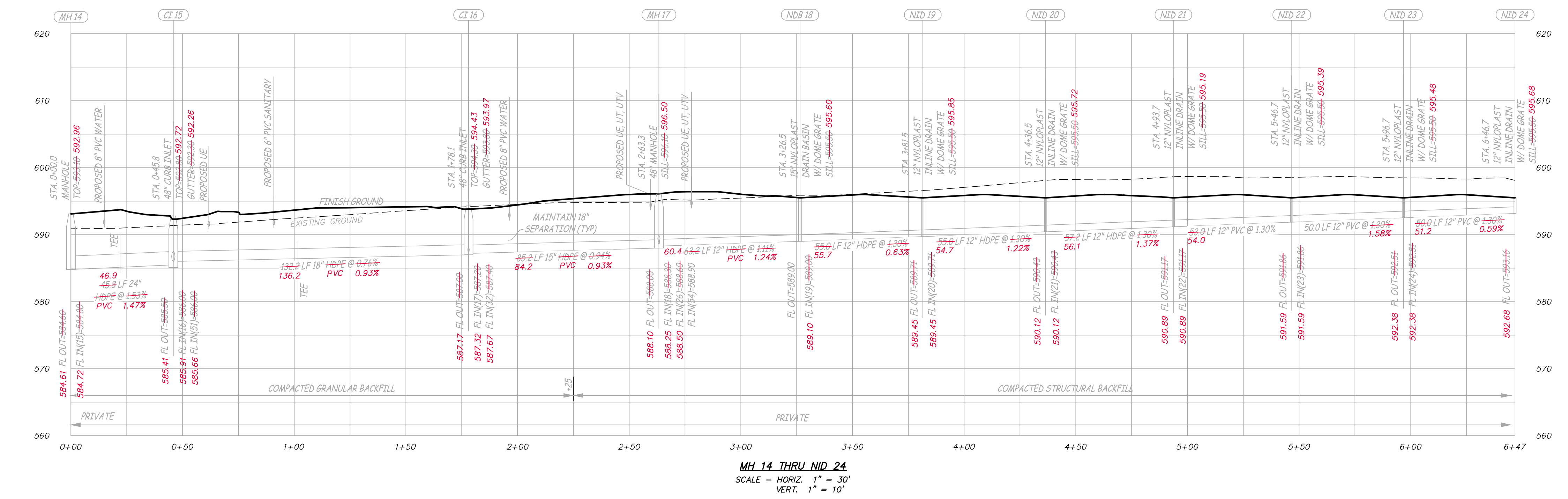
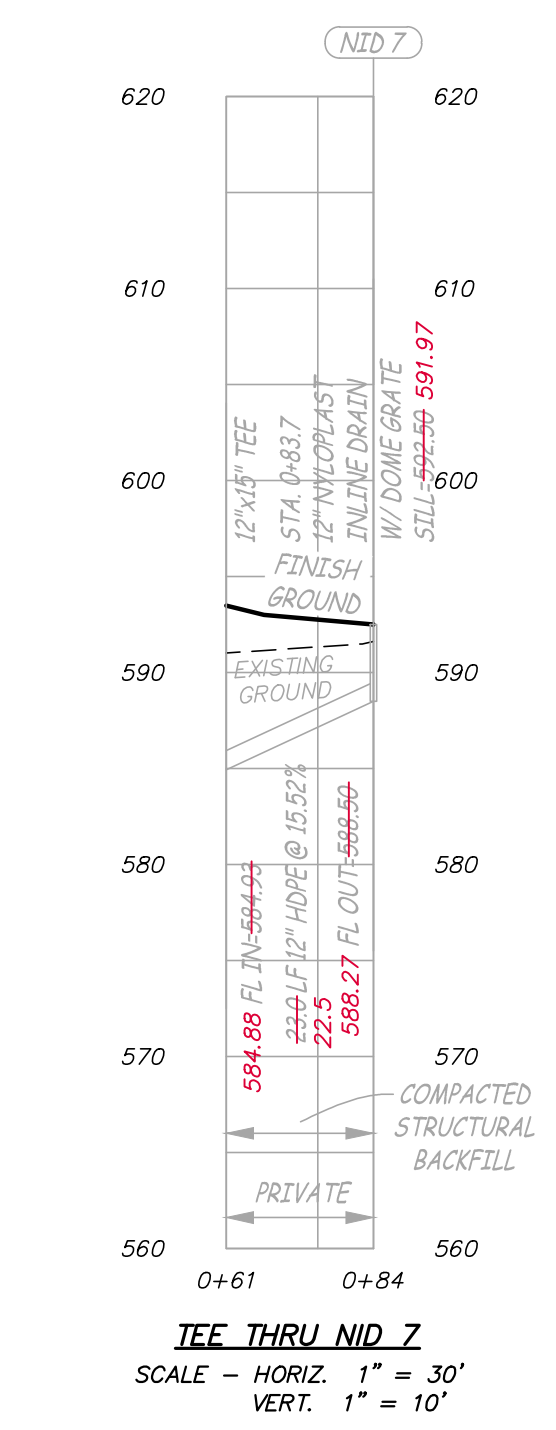
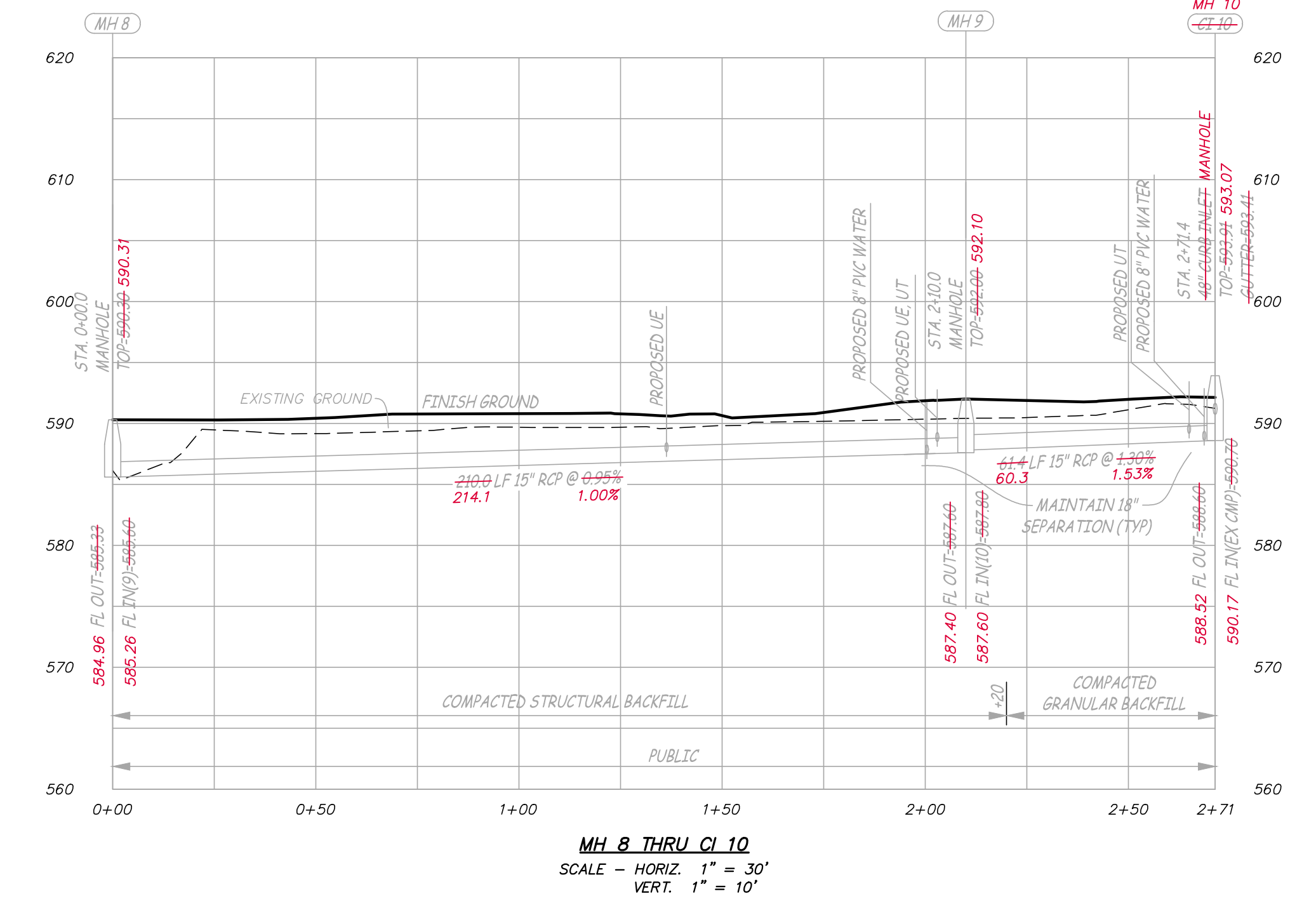
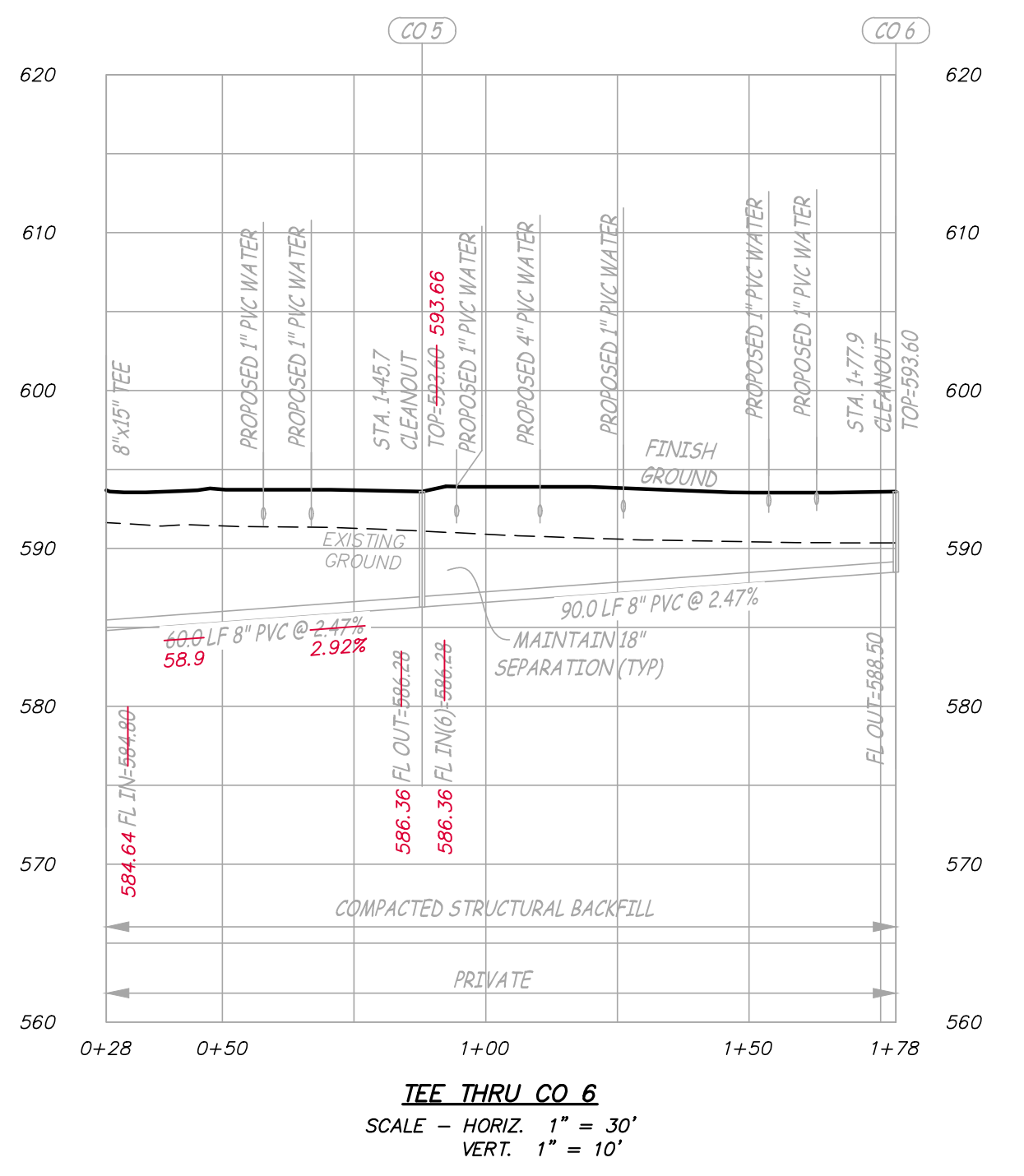
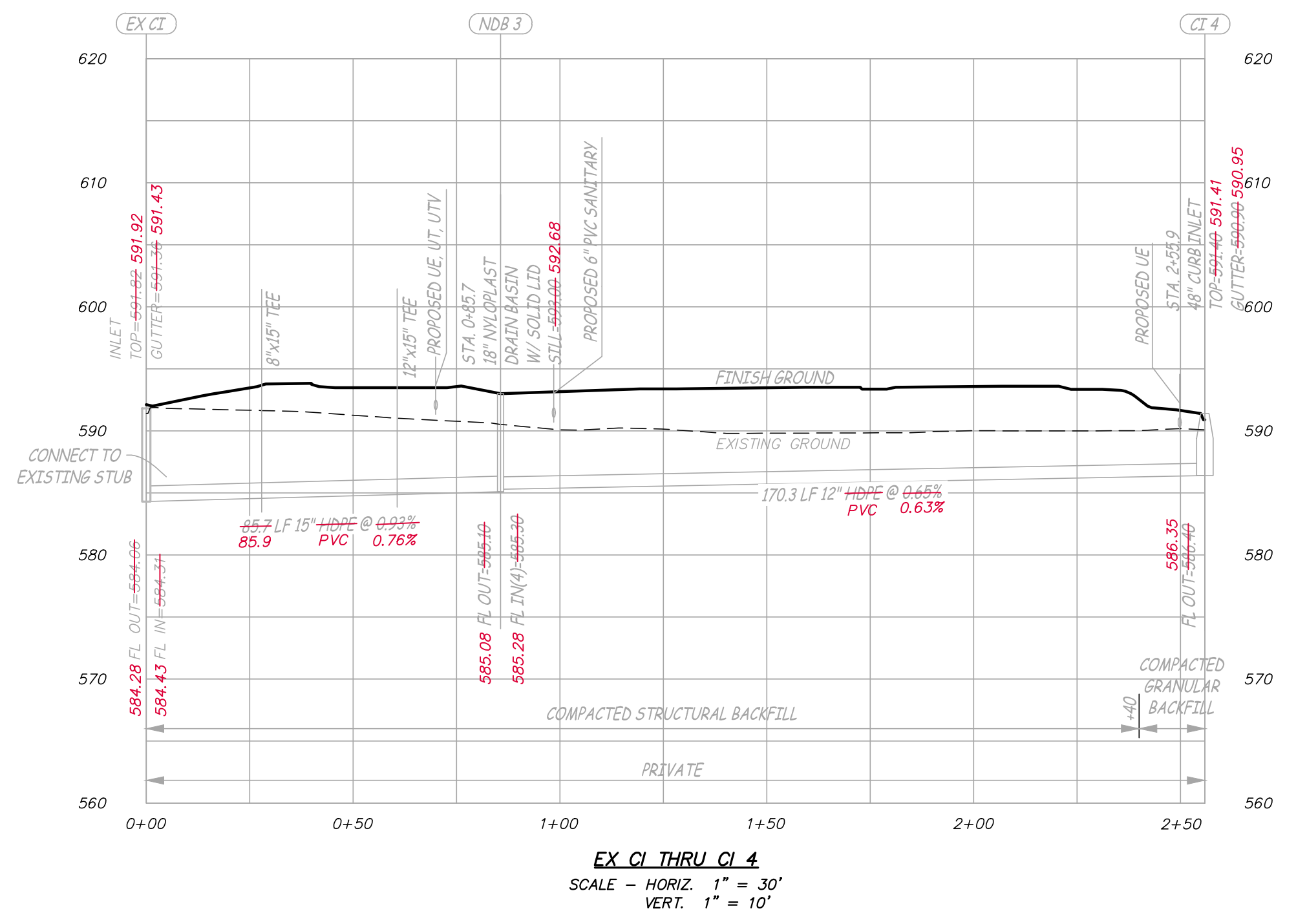
F:\CURRENTDRAWINGS\MES\13143\13143 AS-BUILT.DWG 1/21/2016



Engineering Surveys and Services
 Consulting Engineers, Scientists, and Land Surveyors
 Analytical and Material Laboratories
 1113 Ego Street, Columbia, Missouri 65201
 573-449-2646 • www.ES&S-llc.com

Other Offices:
 Jefferson City, Missouri • Scallow, Missouri
 Missouri Land Surveying Corporation # 204046672

LOT 2 - WOODBURY PLACE
 OF FALLON, ST. CHARLES COUNTY, MISSOURI



THIS MEDIA SHOULD NOT
 BE CONSIDERED A
 CERTIFIED DOCUMENT
PRELIMINARY
 NOT FOR CONSTRUCTION,
 BIDDING, RECORDING, OR
 PERMIT REVIEW PURPOSES

FREDERICK E. CARROZ III
 PROFESSIONAL LAND SURVEYOR
 PLS - 2008016655

Date
DECEMBER 23, 2015

Revised

Surveyed: JEP Drawn: MUS

AS-BUILT

Sheet
V1.03

3 of 6

ES&S PROJECT NO. 13143



Engineering Surveys and Services
 Consulting Engineers, Scientists, and Land Surveyors
 Analytical and Material Laboratories
 1113 Ego Street, Columbia, Missouri 65201
 573-449-2646 - www.ESSS-llc.com

Other Offices:
 Jefferson City, Missouri - Scenic, Missouri
 Missouri Land Surveying Corporation # 200406072

LOT 2 - WOODBURY PLACE
 OFALLON, ST. CHARLES COUNTY, MISSOURI

THIS MEDIA SHOULD NOT
 BE CONSIDERED A
CERTIFIED DOCUMENT
PRELIMINARY
 NOT FOR CONSTRUCTION,
 BIDDING, RECORDING, OR
 PERMIT REVIEW PURPOSES

FREDERICK E. CARROZ III
 PROFESSIONAL LAND SURVEYOR
 PLS - 2008016653

Date
DECEMBER 23, 2015

Revised

Surveyed: JEP Drawn: MJS

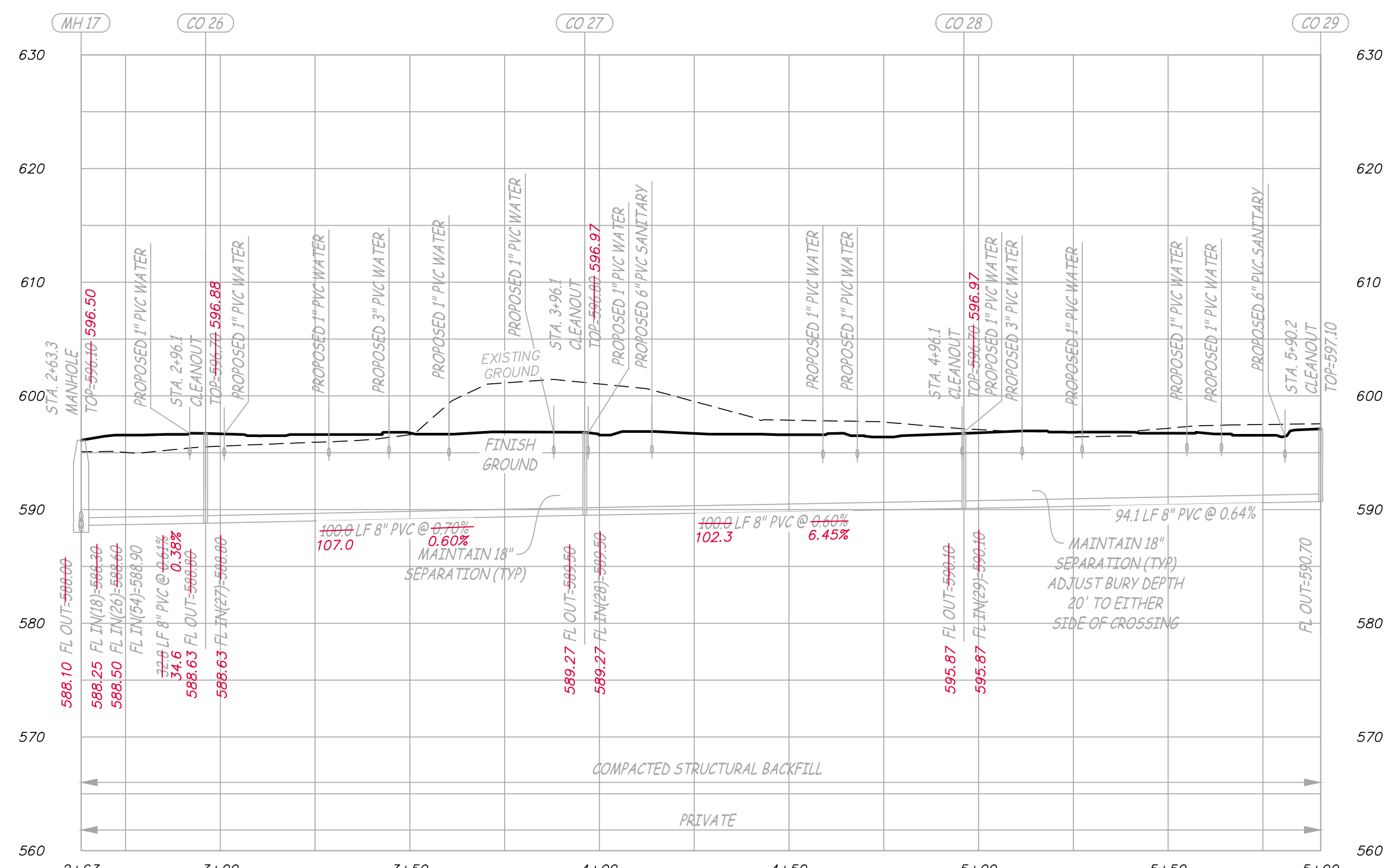
AS-BUILT

Sheet

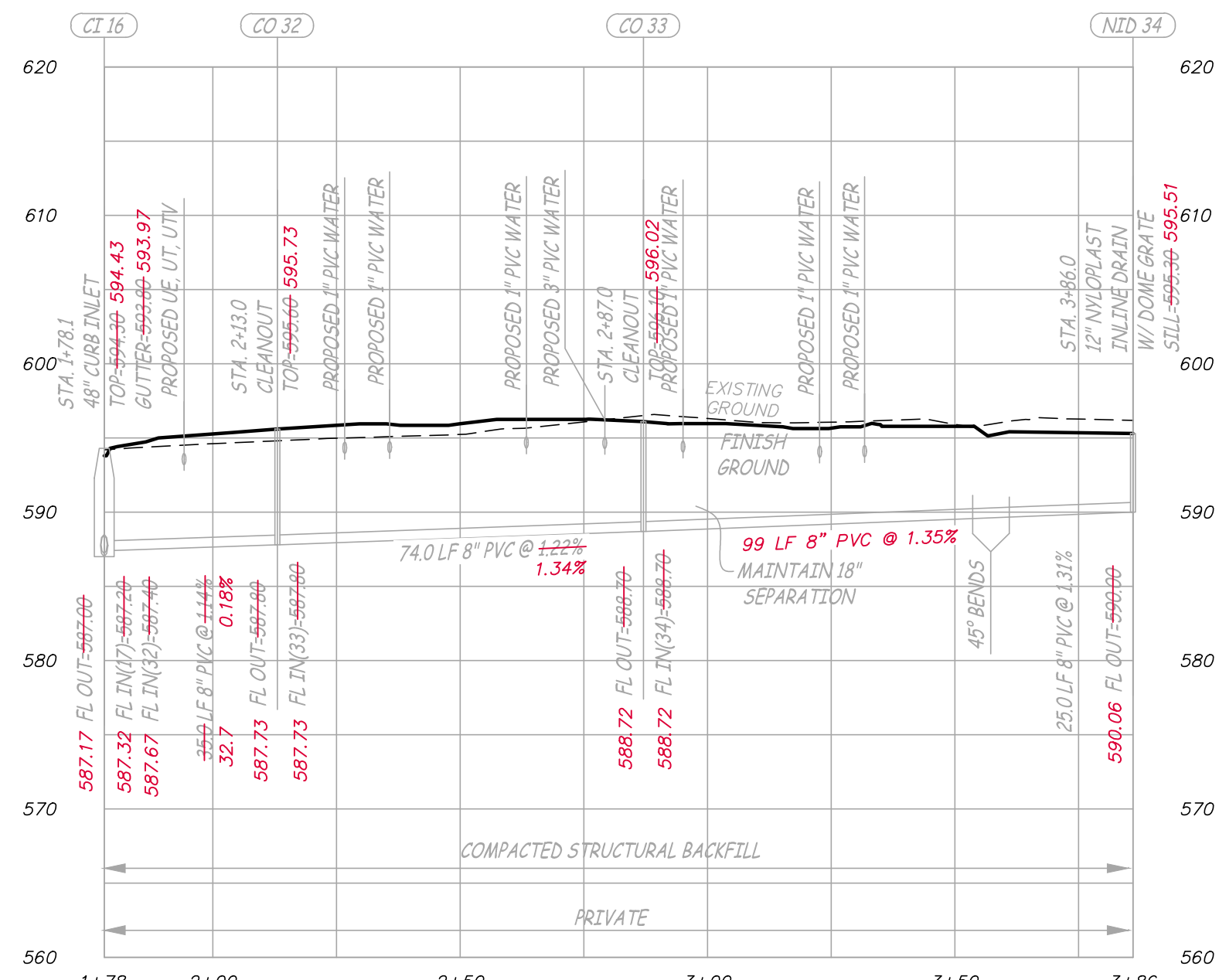
V1.04

4 of 6

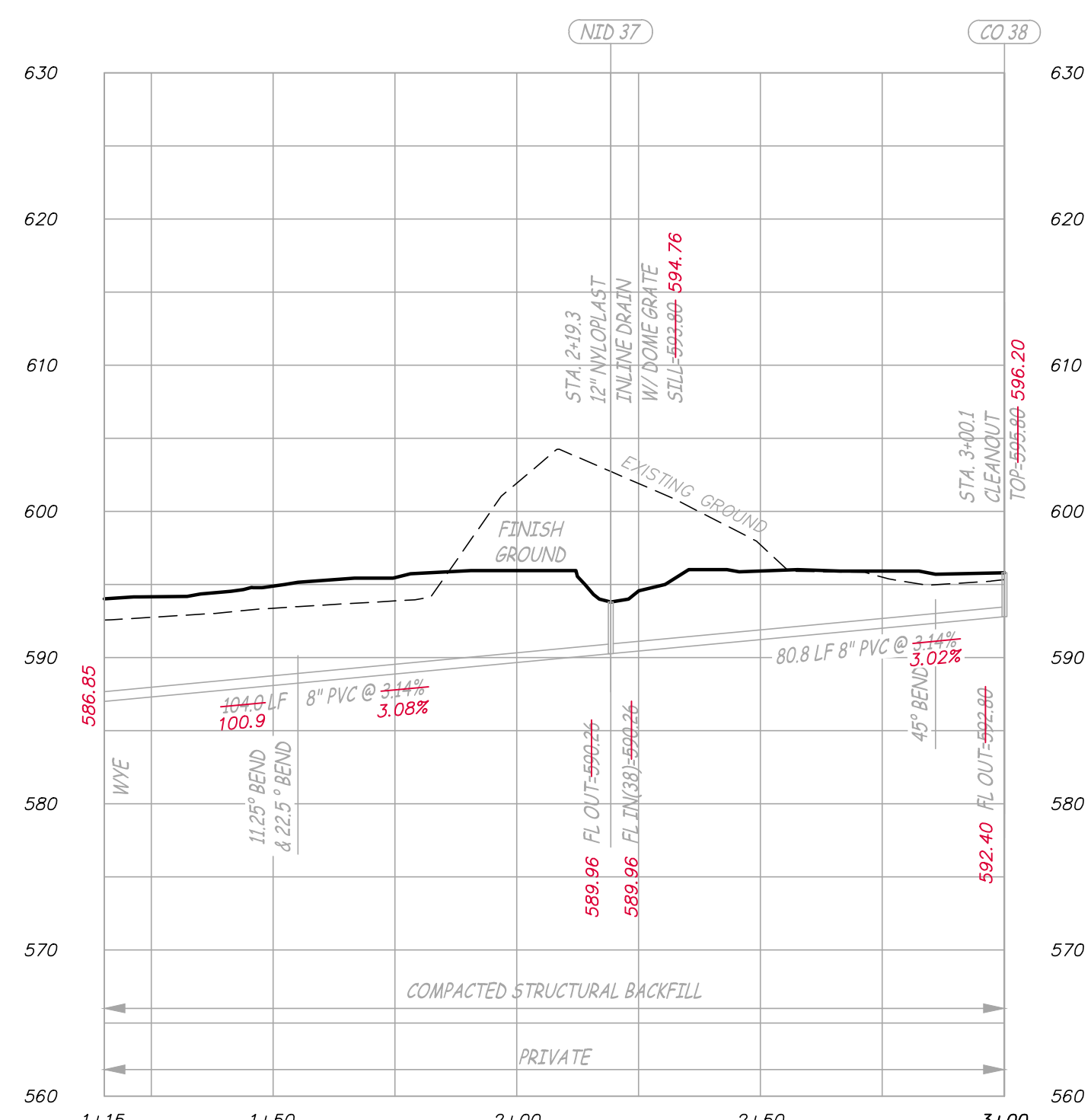
ES&S PROJECT NO. 13143



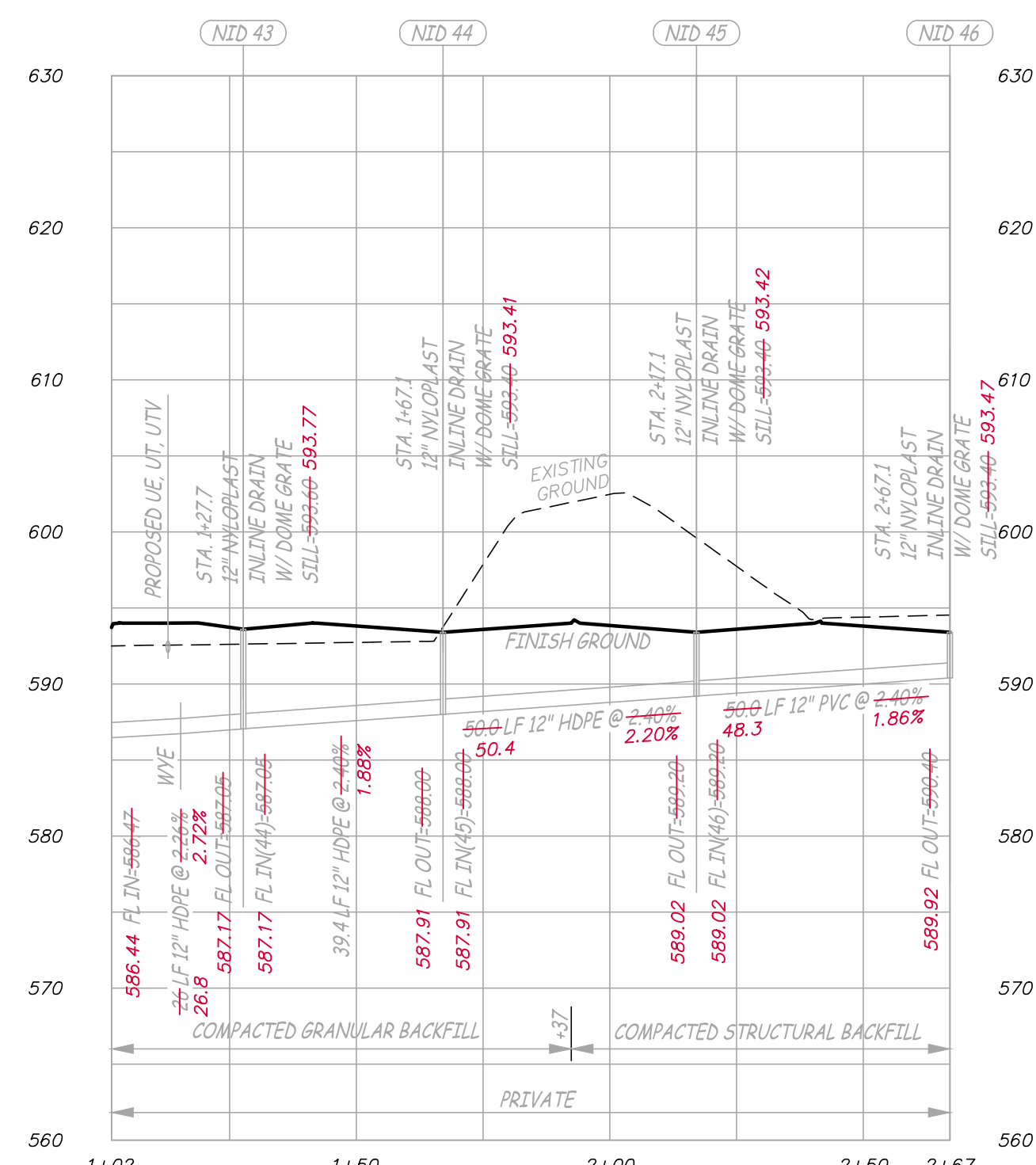
MH 17 THRU CO 29
 SCALE - HORIZ. 1" = 30'
 VERT. 1" = 10'



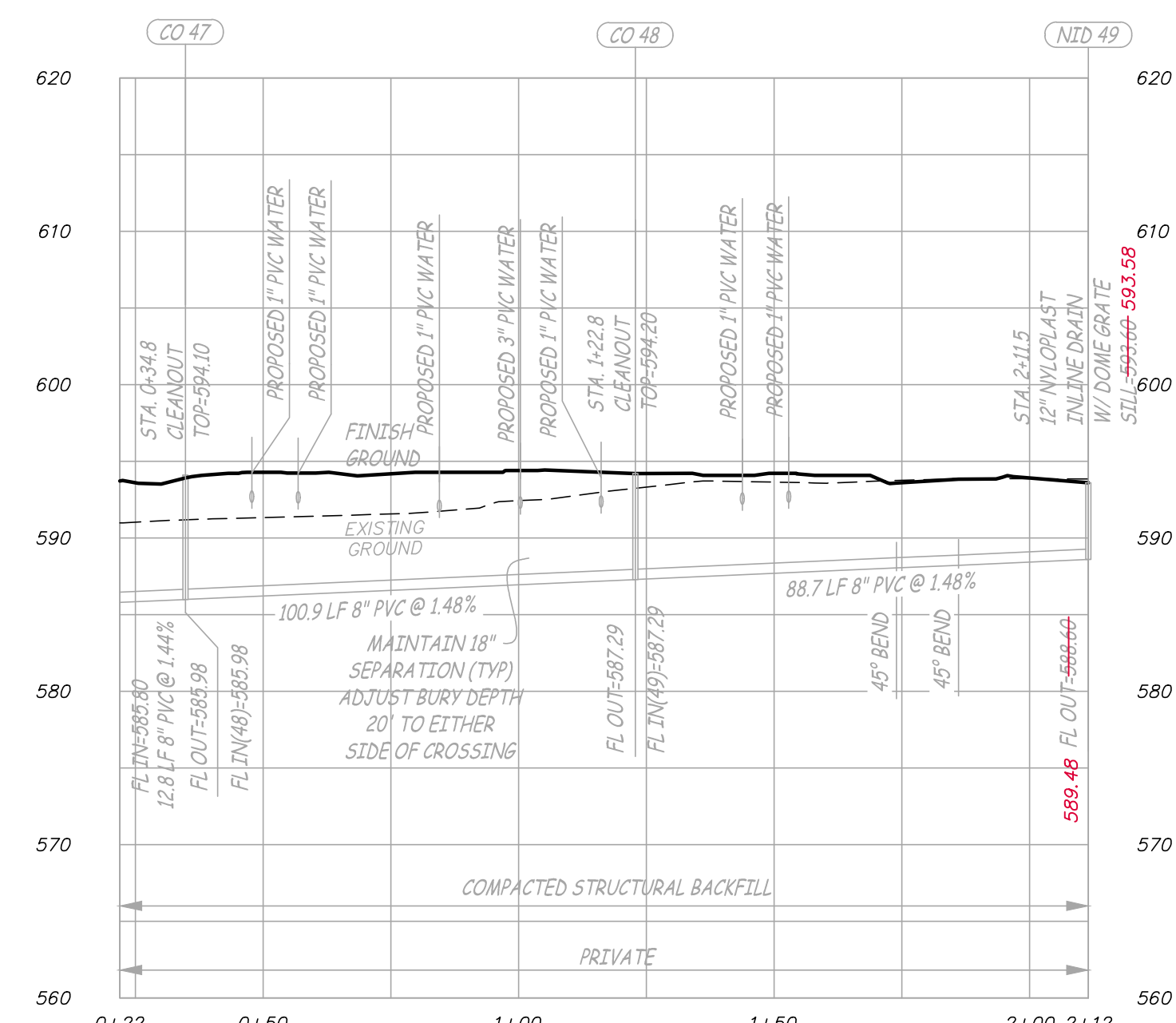
CI 16 THRU NID 34
 SCALE - HORIZ. 1" = 30'
 VERT. 1" = 10'



WYE THRU CO 38
 SCALE - HORIZ. 1" = 30'
 VERT. 1" = 10'



TEE THRU NID 46
 SCALE - HORIZ. 1" = 30'
 VERT. 1" = 10'



TEE THRU NID 49
 SCALE - HORIZ. 1" = 30'
 VERT. 1" = 10'



Engineering Surveys and Services
 Consulting Engineers, Scientists, and Land Surveyors
 Analytical and Material Laboratories
 1113 Ego Street, Columbia, Missouri 65201
 573-449-2646 • www.ESSS-llc.com

Other Offices:
 Jefferson City, Missouri • Sedalia, Missouri
 Missouri Land Surveying Corporation # 204046672

LOT 2 - WOODBURY PLACE
 OFALLON, ST. CHARLES COUNTY, MISSOURI

THIS MEDIA SHOULD NOT
 BE CONSIDERED A
 CERTIFIED DOCUMENT
PRELIMINARY
 NOT FOR CONSTRUCTION,
 BIDDING, RECORDING, OR
 PERMIT REVIEW PURPOSES

FREDERICK E. CARROZ III
 PROFESSIONAL LAND SURVEYOR
 PLS - 2008016655

Date
DECEMBER 23, 2015

Revised

Surveyed: JEP Drawn: MUS

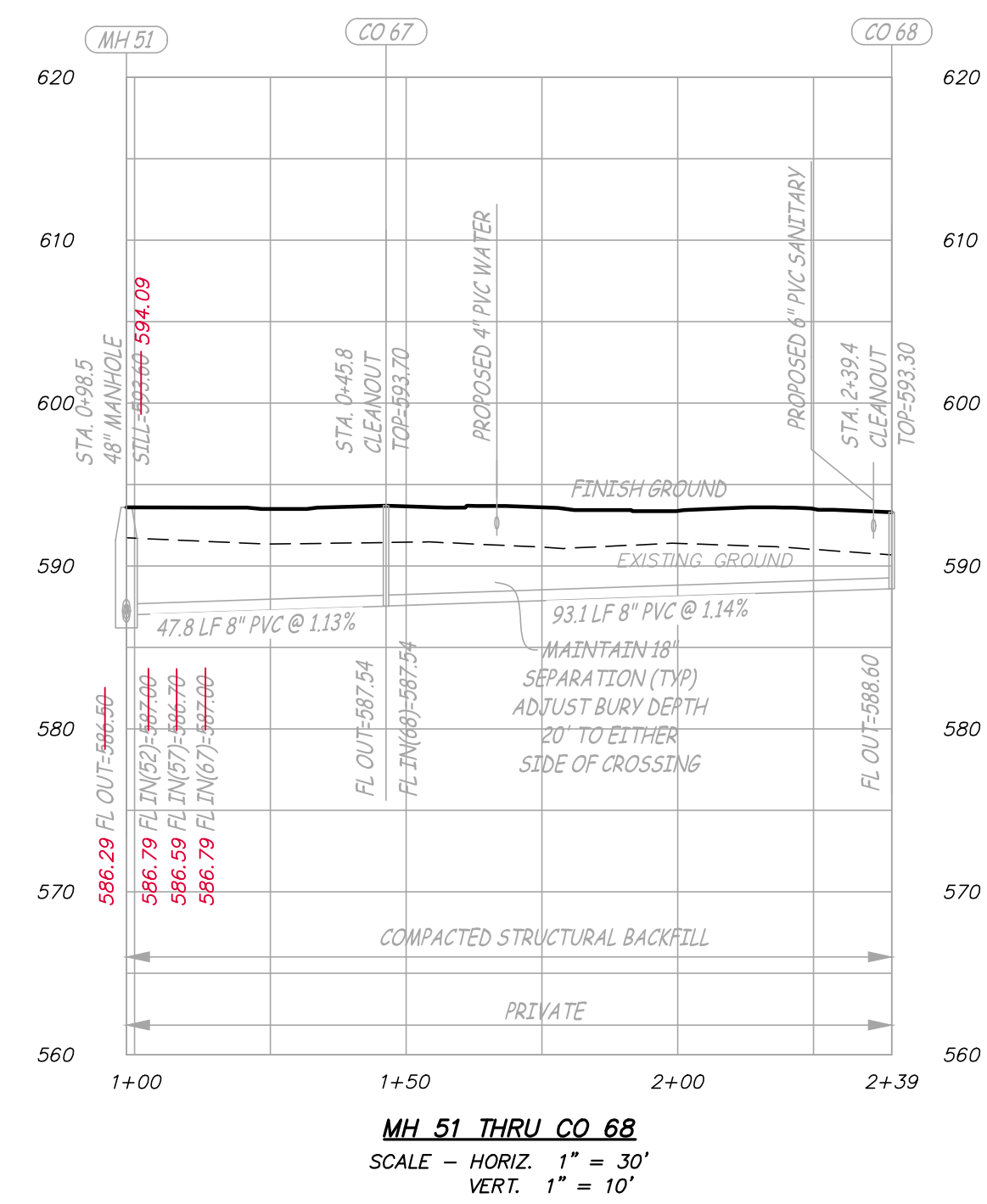
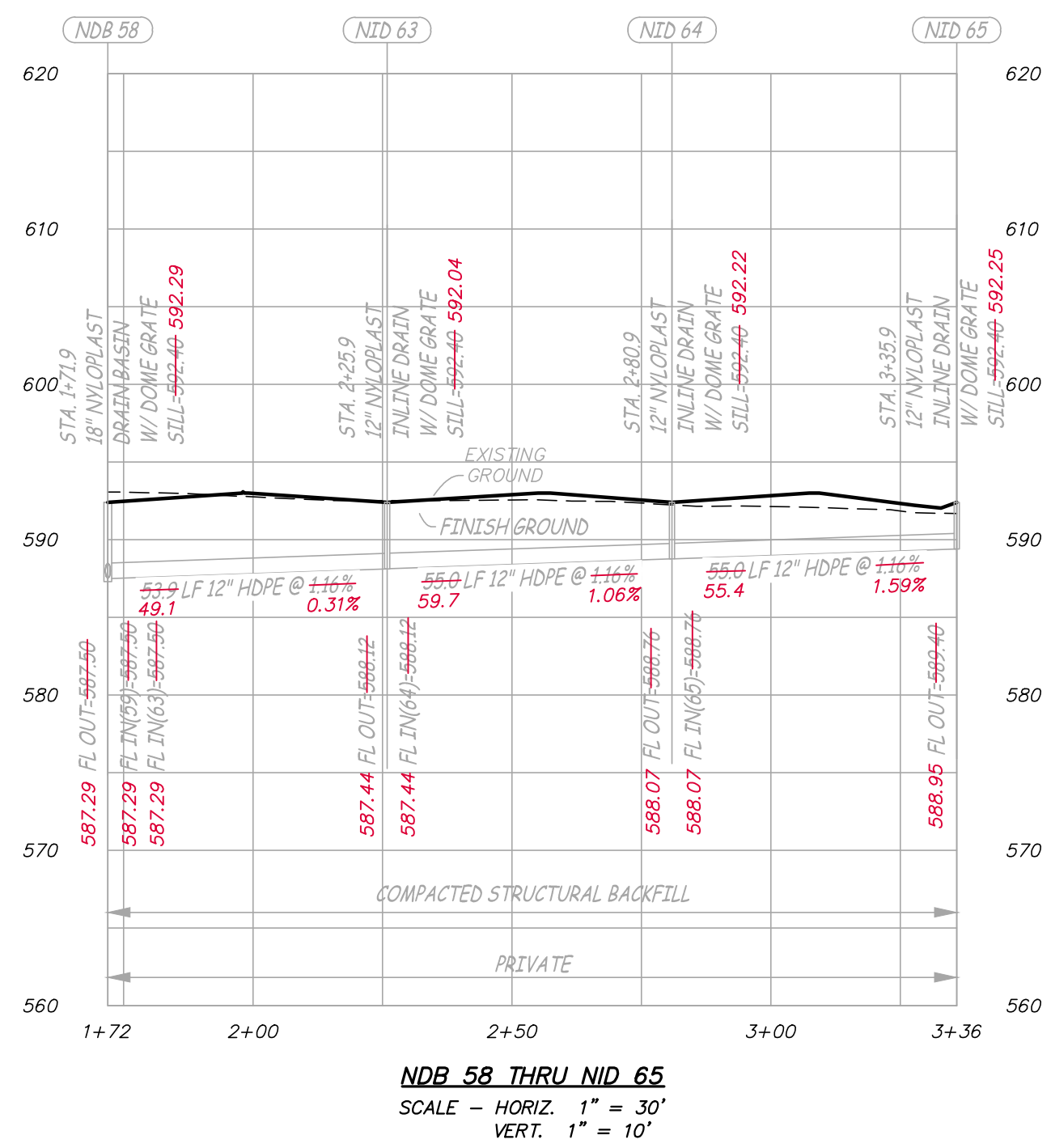
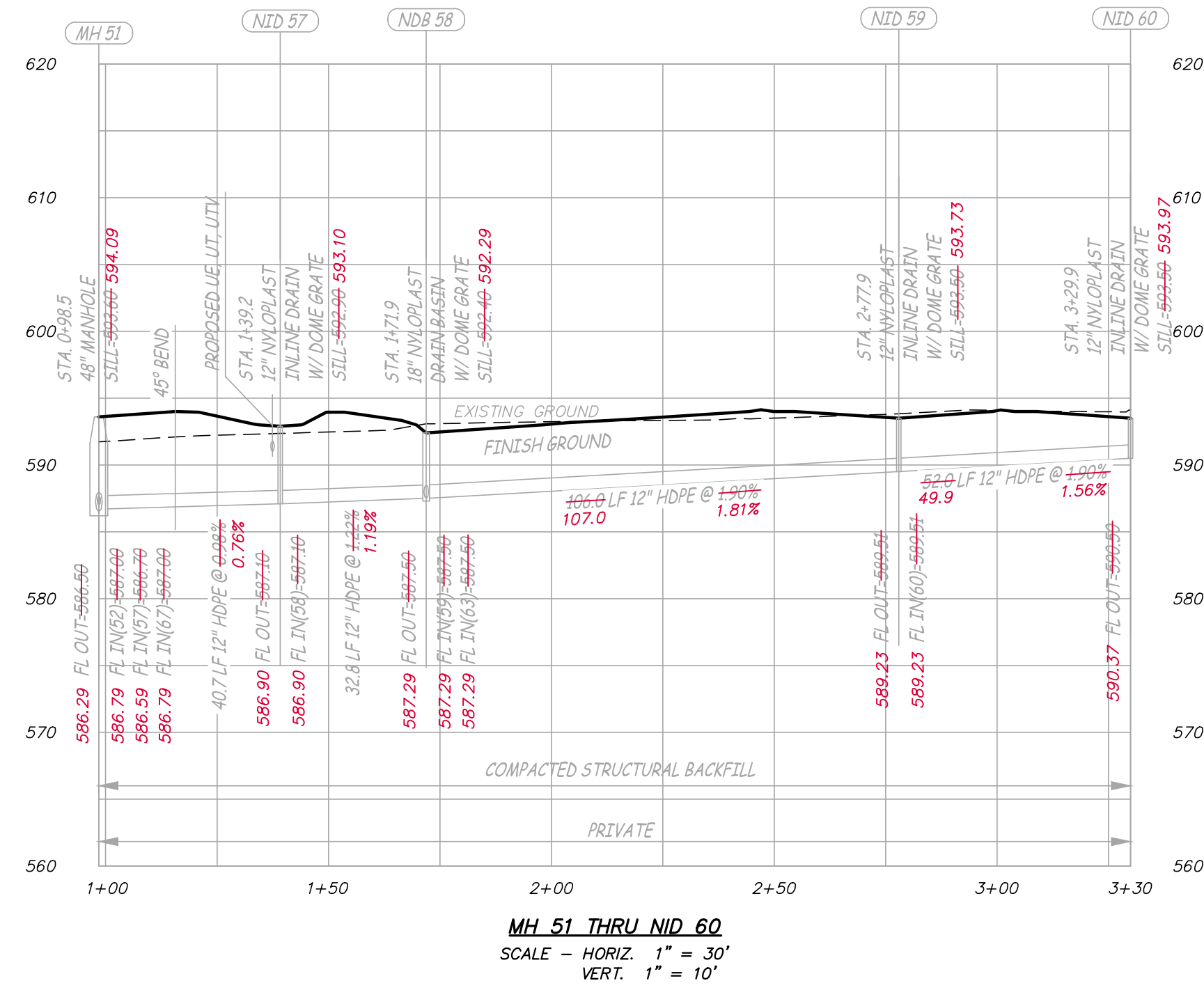
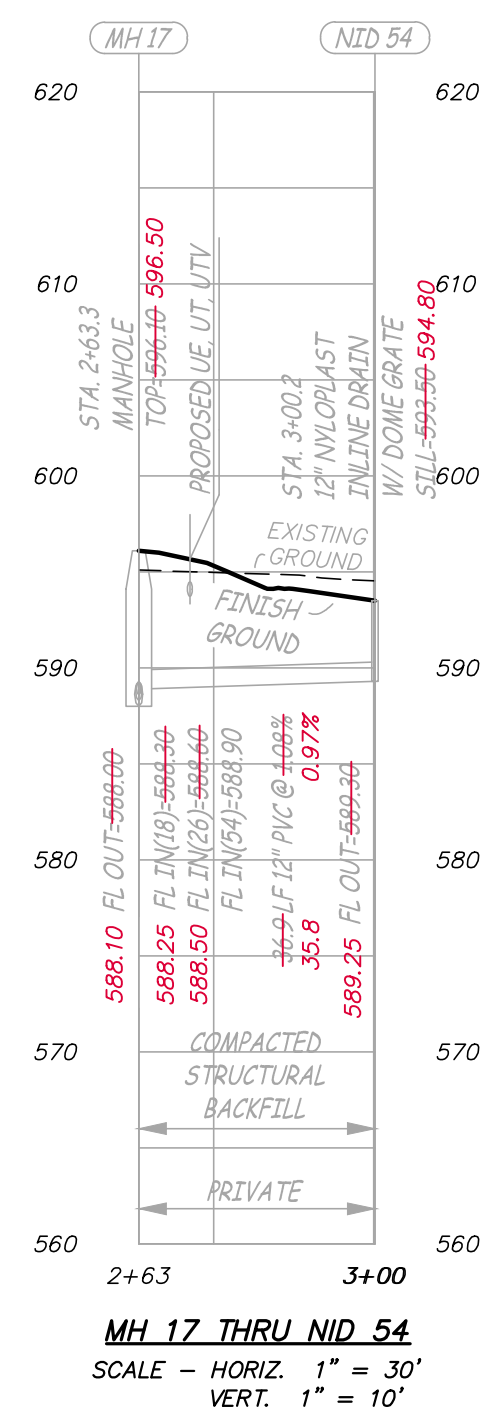
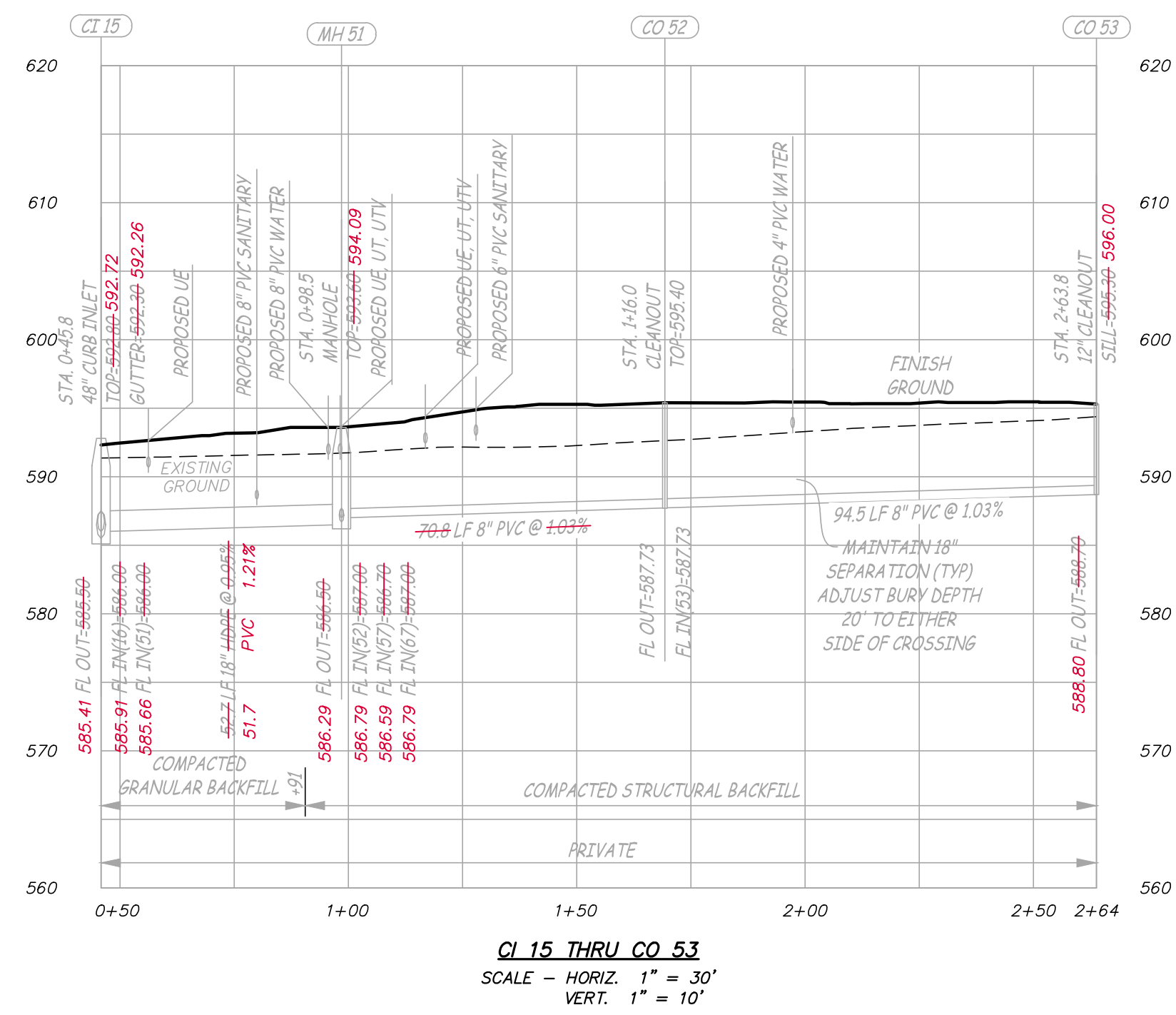
AS-BUILT

Sheet

V1.05

5 of 6

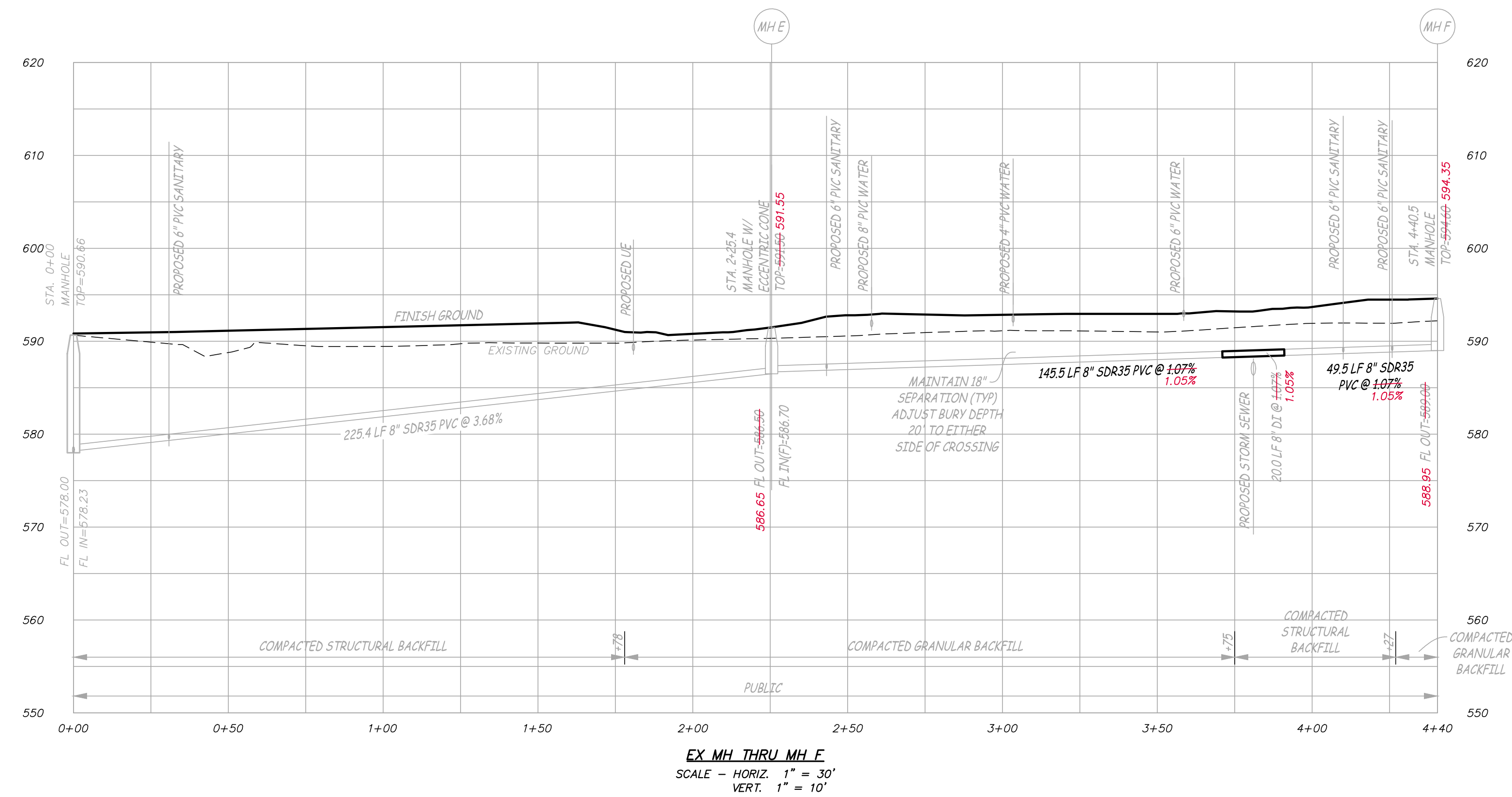
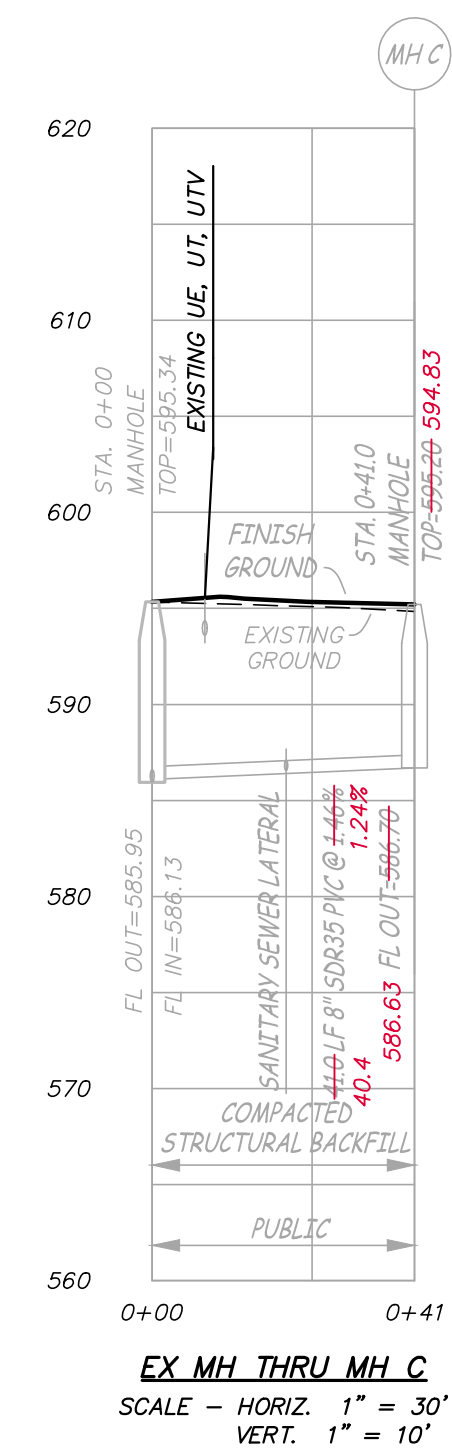
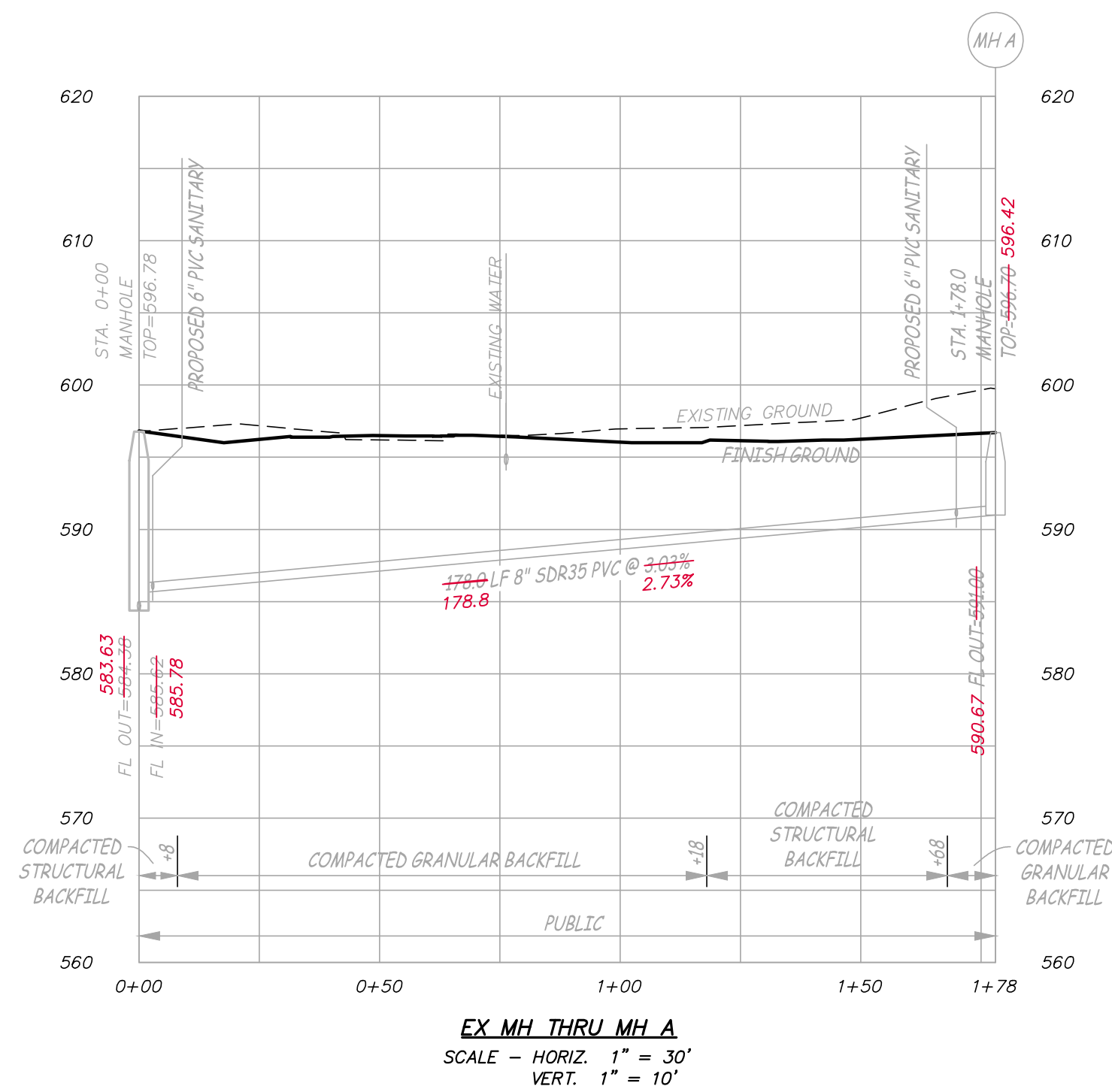
ESS&S PROJECT NO. 13143





Engineering Surveys and Services
 Consulting Engineers, Scientists, and Land Surveyors
 Analytical and Material Laboratories
 1113 Eng Street, Columbia, Missouri 65201
 573-449-2646 • www.ESSS-llc.com
 Other Offices:
 Jefferson City, Missouri • Sedalia, Missouri
 Missouri Land Surveying Corporation # 200406072

LOT 2 - WOODBURY PLACE
 OF FALLON, ST. CHARLES COUNTY, MISSOURI



THIS MEDIA SHOULD NOT
 BE CONSIDERED A
 CERTIFIED DOCUMENT
PRELIMINARY
 NOT FOR CONSTRUCTION,
 BIDDING, RECORDING, OR
 PERMIT REVIEW PURPOSES

FREDERICK E. CARROZ III
 PROFESSIONAL LAND SURVEYOR
 PLS - 2008016655

Date
DECEMBER 23, 2015

Revised

Surveyed: JEP Drawn: MUS

AS-BUILT

Sheet
V1.06

6 of 6
 ES&S PROJECT NO. 13143