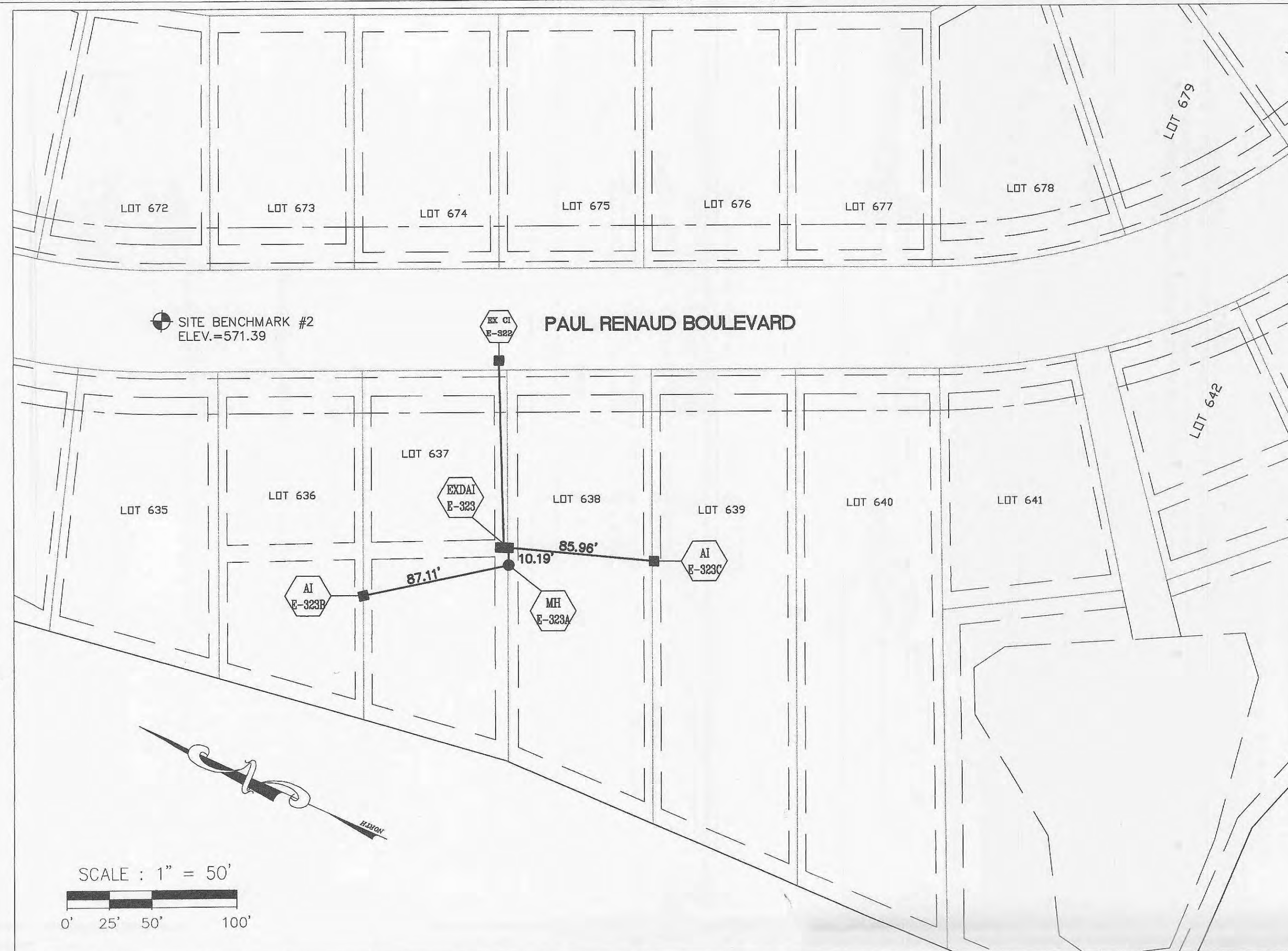


# STORM SEWER AS-BUILTS WYNDGATE CHANGE ORDER WYG-016 "WYNDGATE VILLAGE E" PLAT BOOK 42, PAGES 370-374 TOWNSHIP 46 NORTH, RANGE 2 EAST OF THE FIFTH PRINCIPAL MERIDIAN, CITY OF O'FALLON, ST. CHARLES COUNTY, MISSOURI

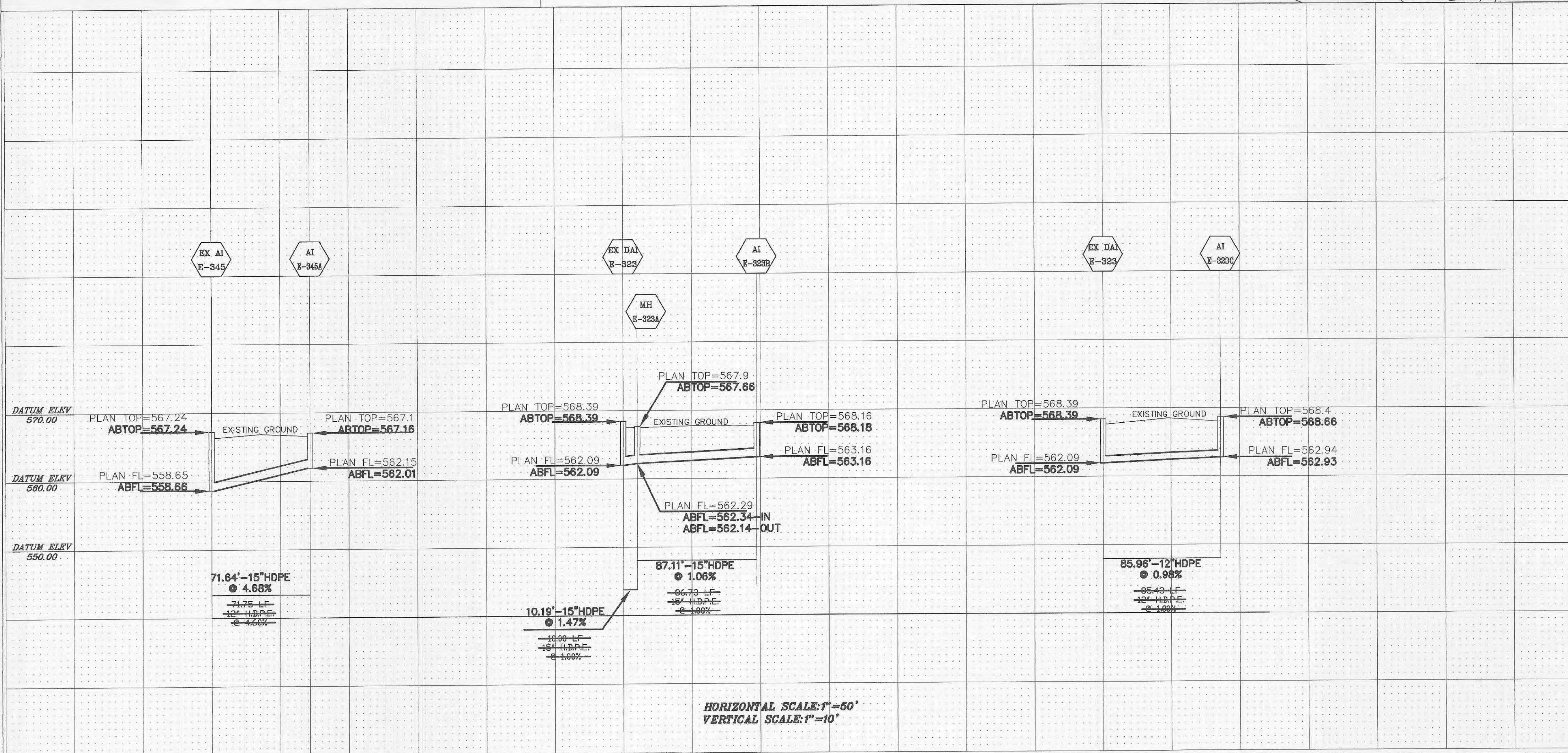
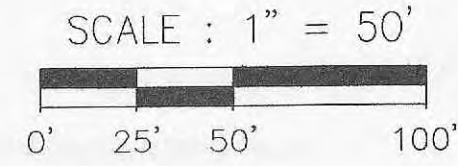
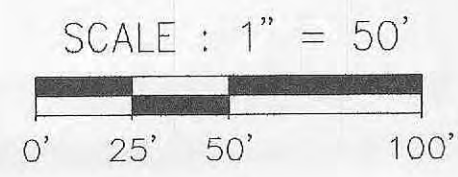


GENERAL NOTES

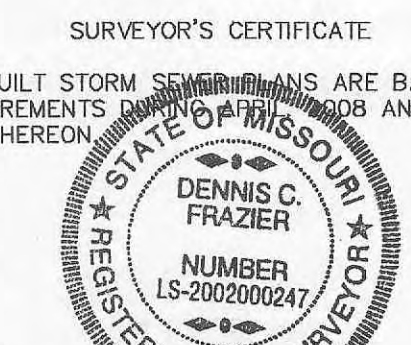
1. REFERENCE BENCHMARK: USGS STANDARD TABLE STAMPED "11" 600 1936 616, SET IN CONCRETE POST. LOCATED AT DARDENNE, T46N, R2E, NEAR APPROXIMATE CORNER SECTIONS 1, 2, 11 AND 12, 31' NORTH AND 20' WEST OF CROSSROADS, 49' SOUTH OF SE CORNER OF CATHOLIC CHURCH, 2' NORTH OF SIDEWALK. ELEV.=616.50

SITE BENCHMARK #1. ELEV.=565.46. CUT CROSS ON CURB, LOCATED 13 FEET NORTH OF THE FRONT CORNER OF LOTS 646 AND 647

SITE BENCHMARK #2. ELEV.=571.39. CUT CROSS LOCATED NEAR THE CENTERLINE OF THE EXISTING PAVEMENT, 25 FEET NORTH OF THE CENTER OF LOT 635.



SURVEYOR'S CERTIFICATE  
THESE AS-BUILT STORM SEWER PLANS ARE BASED ON ACTUAL FIELD MEASUREMENTS AND THE RESULTS ARE SHOWN HEREON.



*Dennis C. Frazier* 07/07/08  
DENNIS C. FRAZIER  
MISSOURI PROFESSIONAL LAND SURVEYOR  
#200200247  
FRAZIER LAND SURVEYING SERVICES, INC.

PREPARED FOR: T.R. HUGHES, INC. 239 FOX HILL ROAD ST. CHARLES, MO. 63301	DATE: 04/18/08 SCALE: 1"=50' PROJECT NO.: 08-031 FILE NAME: 08-031.DWG	<b>STORM SEWER AS-BUILT</b> SITE: WYNDGATE VILLAGE "E" P.B. 42 PGS. 370-374
WYNDGATE CHANGE ORDER WYG-016 WYNDGATE VILLAGE E P.B. 42 PGS. 370-374 TOWNSHIP 46 NORTH, RANGE 2 EAST	REV-1: 06/12/08-CITY COMMENTS REV-2: REV-3: REV-4:	FRAZIER LAND SURVEYING SERVICES, INC. 51 HIGHWAY T FORISTELL, MO. 63348 PHONE: 636-463-1355 FAX: 636-463-1352