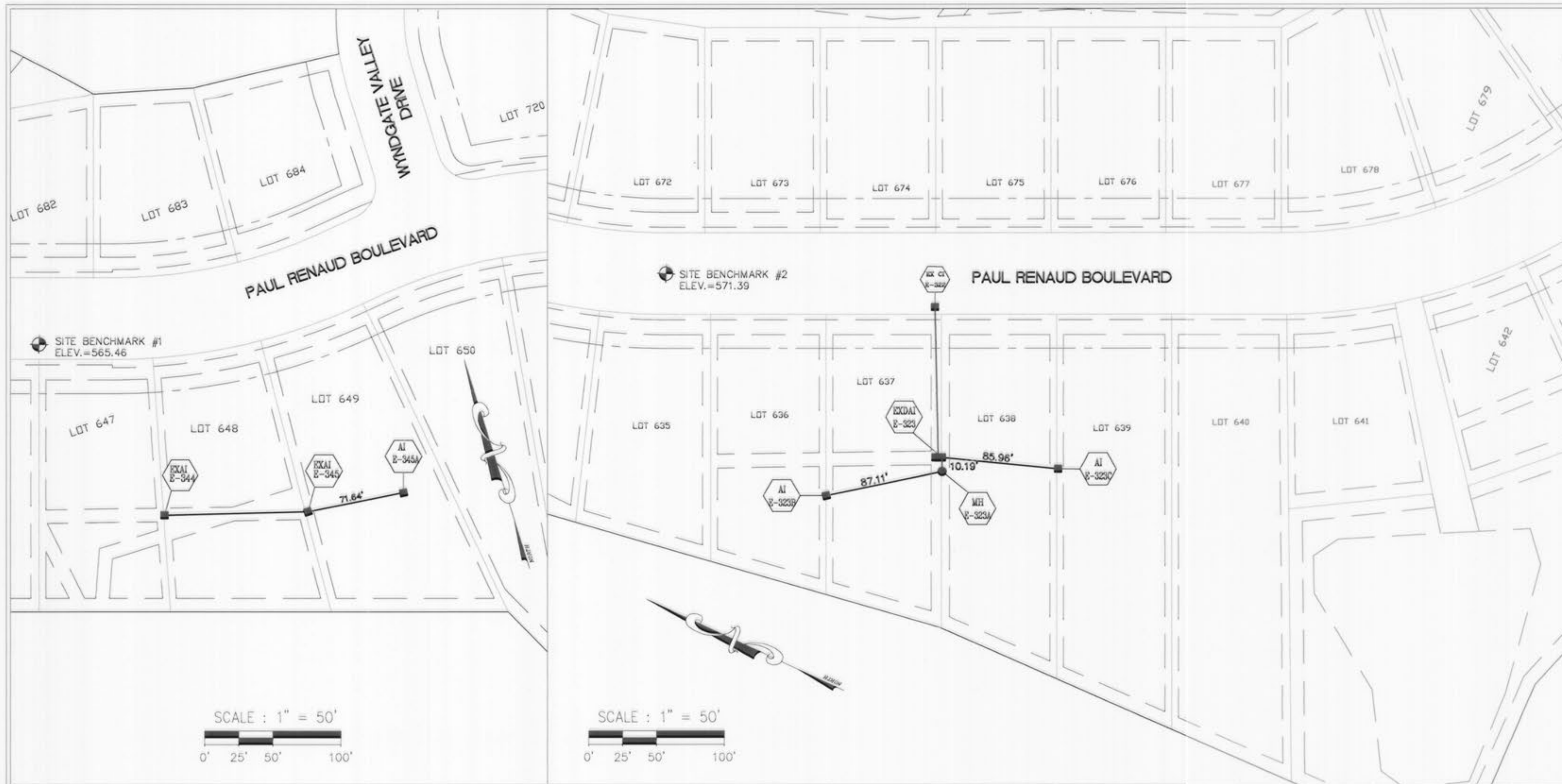


STORM SEWER AS-BUILTS

WYNDGATE CHANGE ORDER WYG-016

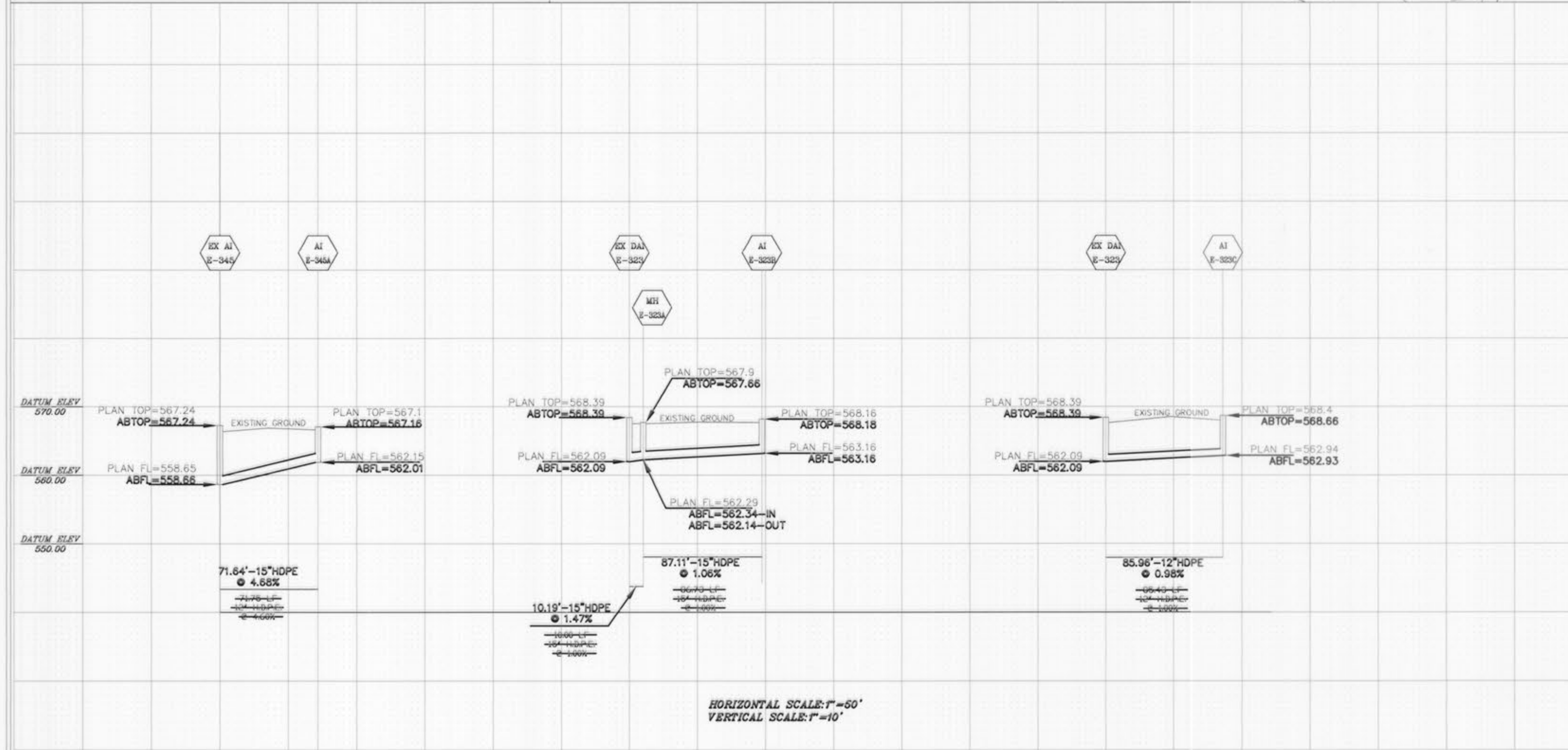
"WYNDGATE VILLAGE E"

PLAT BOOK 42, PAGES 370-374
 TOWNSHIP 46 NORTH, RANGE 2 EAST
 OF THE FIFTH PRINCIPAL MERIDIAN,
 CITY OF O'FALLON,
 ST. CHARLES COUNTY, MISSOURI



GENERAL NOTES

1. REFERENCE BENCHMARK: USGS STANDARD TABLE STAMPED "TT" 600 1936 616, SET IN CONCRETE POST, LOCATED AT DARDENNE, T46N, R2E, NEAR APPROXIMATE CORNER SECTIONS 1, 2, 11 AND 12, 31' NORTH AND 20' WEST OF CROSSROADS, 49' SOUTH OF SE CORNER OF CATHOLIC CHURCH, 2' NORTH OF SIDEWALK. ELEV.=616.50
- SITE BENCHMARK #1. ELEV.=565.46. CUT CROSS ON CURB, LOCATED 13 FEET NORTH OF THE FRONT CORNER OF LOTS 646 AND 647
- SITE BENCHMARK #2. ELEV.=571.39. CUT CROSS LOCATED NEAR THE CENTERLINE OF THE EXISTING PAVEMENT, 25 FEET NORTH OF THE CENTER OF LOT 635.



SURVEYOR'S CERTIFICATE

THESE AS-BUILT STORM SEWER PLANS ARE BASED ON ACTUAL FIELD MEASUREMENTS DURING APRIL, 2008 AND THE RESULTS ARE SHOWN HEREON.

DENNIS C. FRAZIER
 MISSOURI PROFESSIONAL LAND SURVEYOR
 #200200247
 FRAZIER LAND SURVEYING SERVICES, INC.

07/07/08

PREPARED FOR: T.R. HUGHES, INC. 239 FOX HILL ROAD ST. CHARLES, MO. 63301	DATE: 04/18/08 SCALE: 1"=50' PROJECT NO: 08-031 FILE NAME: 08-031.DWG	STORM SEWER AS-BUILTS SITE: WYNDGATE VILLAGE "E" P.B. 42 PGS. 370-374
WYNDGATE CHANGE ORDER WYG-016 WYNDGATE VILLAGE E P.B. 42 PGS. 370-374 TOWNSHIP 46 NORTH, RANGE 3 EAST	REV-1: 06/12/08-CITY COMMENTS REV-2: REV-3: REV-4:	FRAZIER LAND SURVEYING SERVICES, INC. 51 HIGHWAY T FORISTELL, MO. 63348 PHONE: 636-463-1355 FAX: 636-463-1352