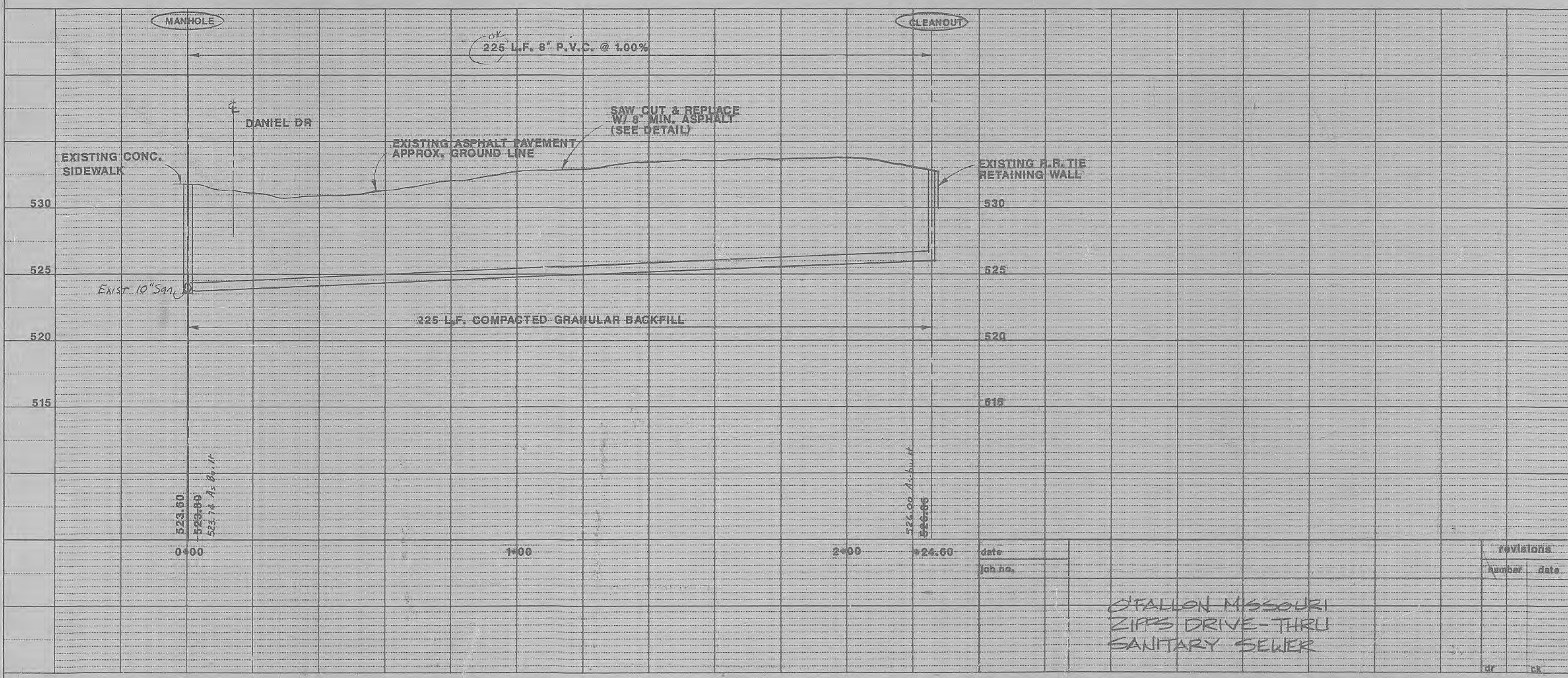
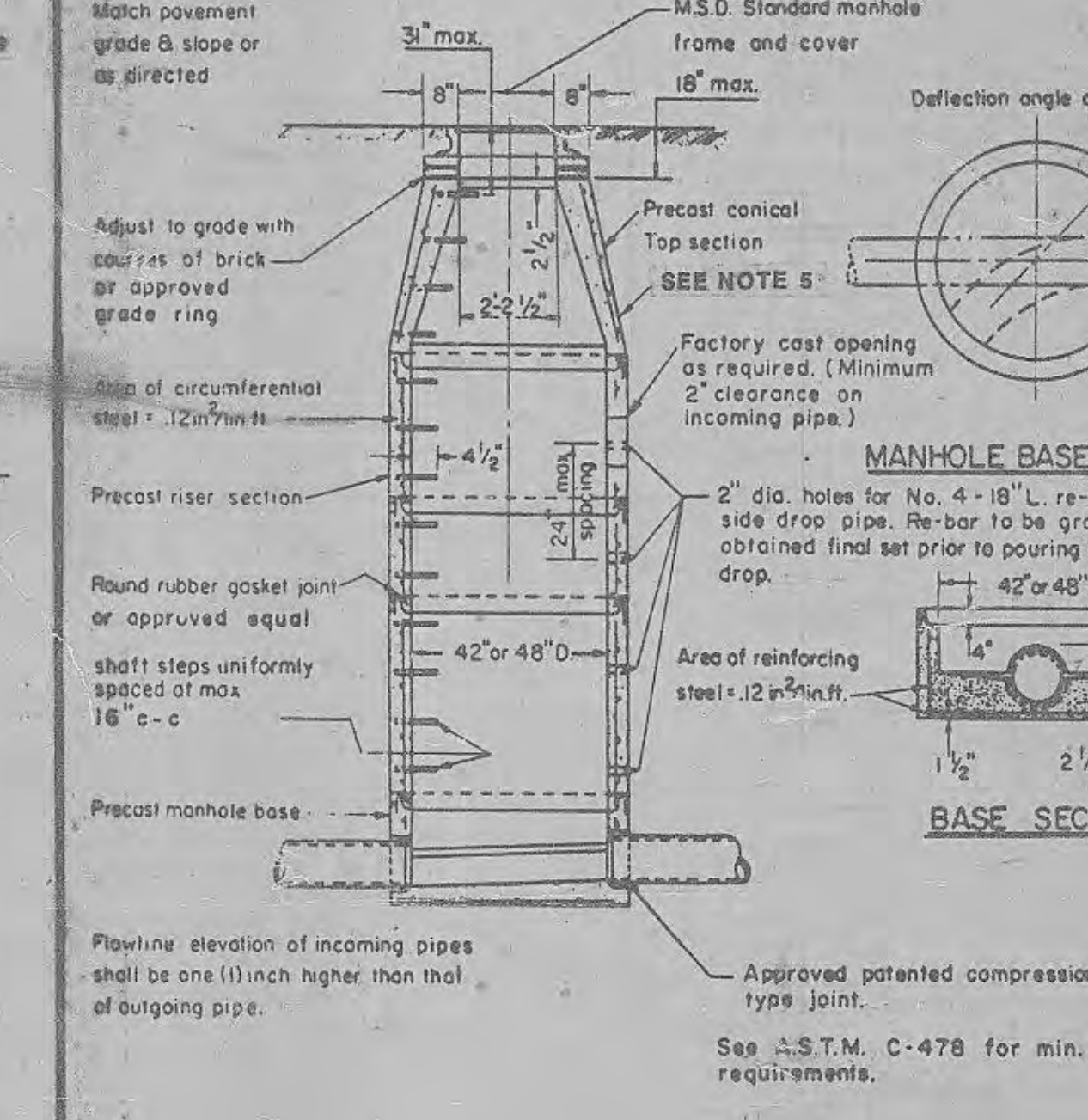
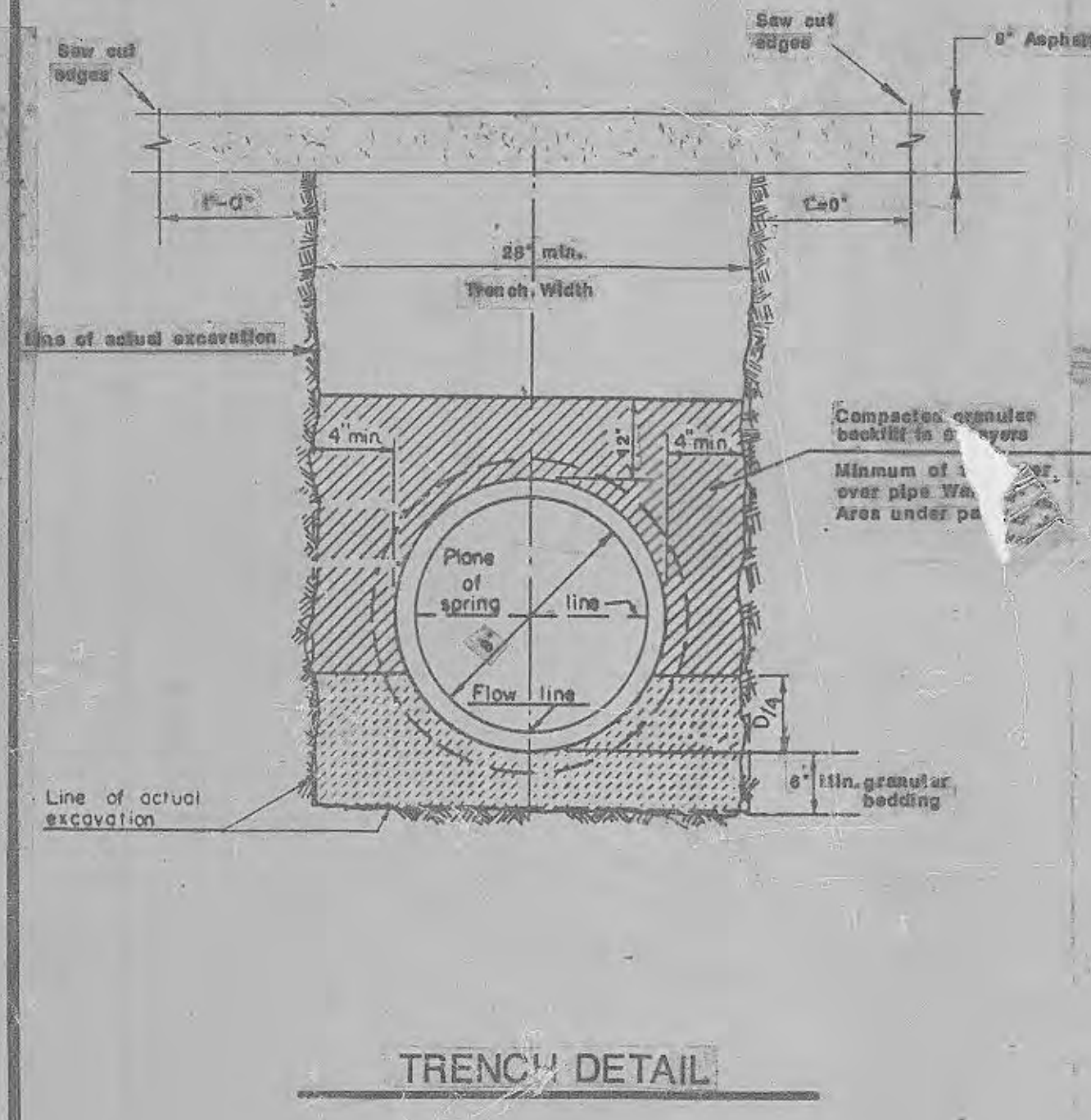
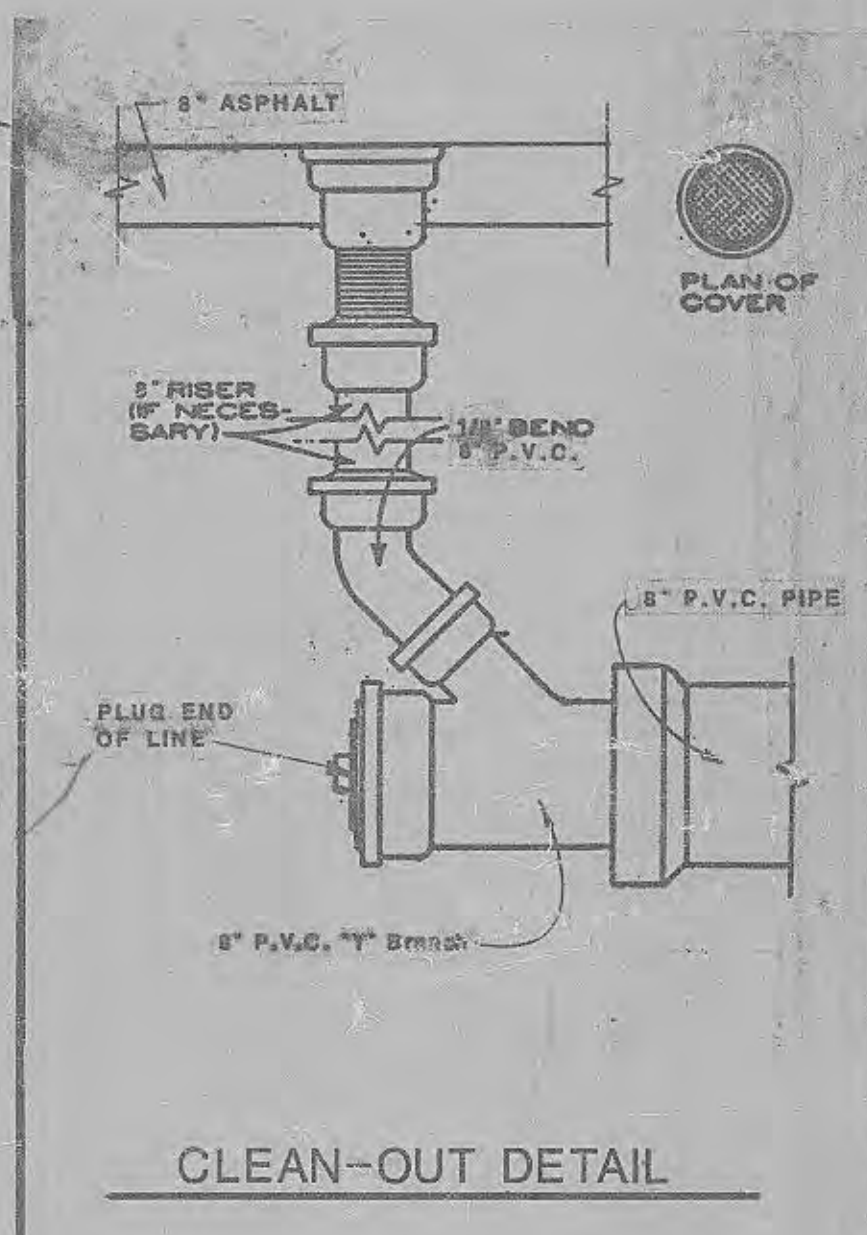
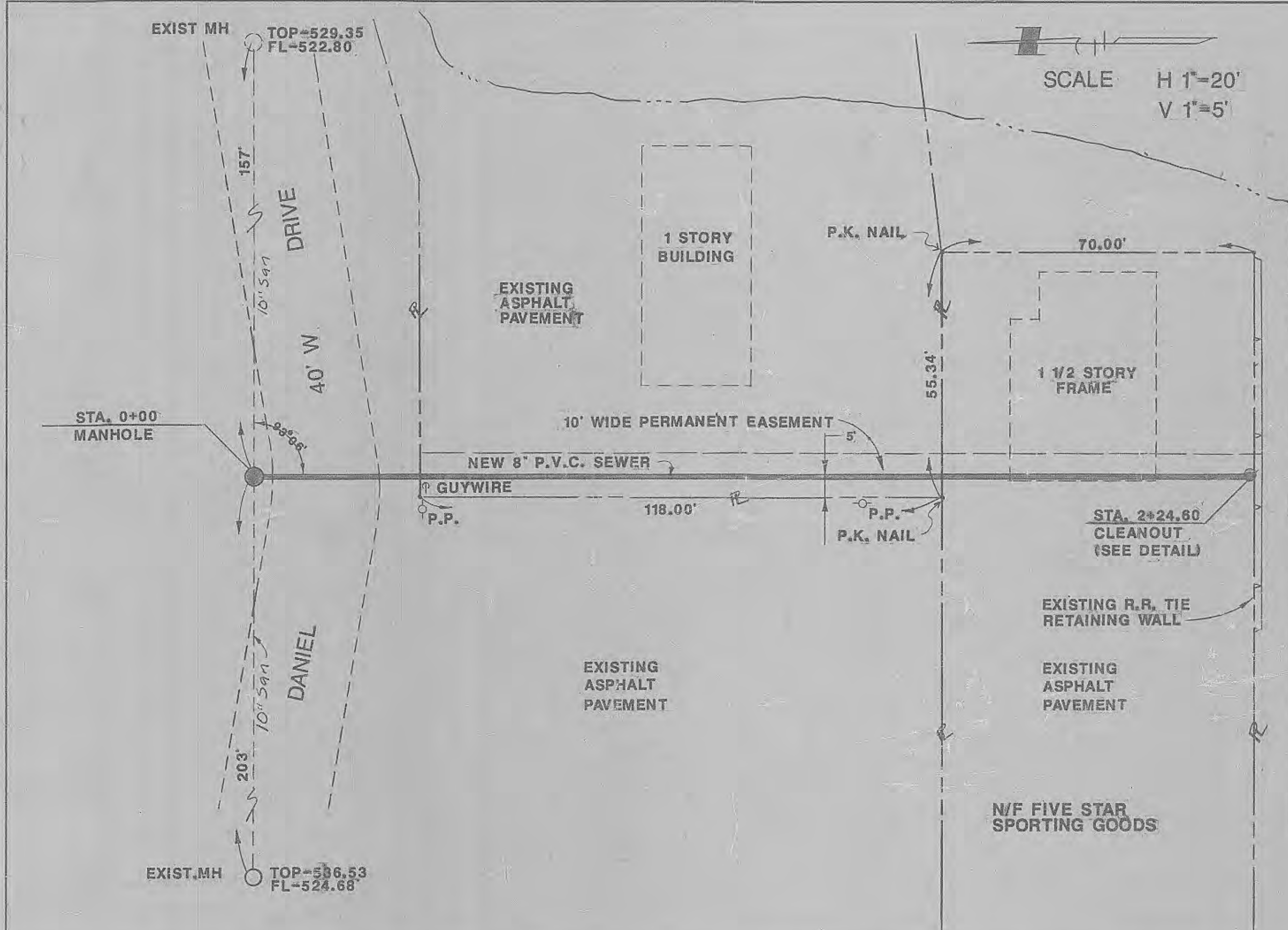


PLAN	DATE
BY	
SURVEYED	
PLOTTED	
CHECKED	
NOTED	
RT. OF WAY CHECKED	
NO.	

PROFILE	DATE
BY	
SURVEYED	
PLOTTED	
CHECKED	
NOTED	
STRUCTURE NOTATIONS CHKD	
NO.	



GENERAL NOTES

- UNDERGROUND FACILITIES, STRUCTURES AND UTILITIES HAVE BEEN PLOTTED FROM AVAILABLE SURVEYS AND RECORDS, AND THEIR LOCATIONS MUST BE CONSIDERED APPROXIMATE ONLY. THERE MAY BE OTHERS THE EXISTENCE OF WHICH IS AT PRESENT NOT KNOWN. VERIFICATION OF THE LOCATIONS OF UNDERGROUND UTILITIES, SHOWN OR NOT SHOWN WILL BE THE RESPONSIBILITY OF THE CONTRACTOR.
- ALL SEWER ADJUSTMENTS, RELOCATIONS AND CONSTRUCTION SHALL BE PERFORMED BY THE CONTRACTOR AND COMPLY WITH STANDARD CONSTRUCTION SPECIFICATIONS FOR SEWERS AND DRAINAGE FACILITIES "BY THE METROPOLITAN ST. LOUIS SEWER DISTRICT, 1926."
- PUBLIC UTILITY FACILITIES SUCH AS MANHOLES, METER AND VALVE BOXES OF GAS, ELECTRIC AND TELEPHONE WILL BE ADJUSTED OR RELOCATED BY THE VARIOUS UTILITY COMPANIES. ADJUSTMENT OF UTILITY AND SEWER FACILITIES NOT PROVIDED BY UTILITY COMPANIES WILL BE PROVIDED BY THE CONTRACTOR AS NECESSARY.
- ALL PAVEMENT AND ENTRANCES ARE TO BE SAW CUT AT POINT OF REMOVAL PRIOR TO REMOVAL.
- PAINT OUTSIDE OF MANHOLE WITH BLACK COAL TAR PITCH.
- ONE LANE OF DANIEL DRIVE IS TO REMAIN OPEN DURING CONSTRUCTION.
- CONTRACTOR IS TO NOTIFY POLICE AND FIRE DEPARTMENT PRIOR TO CONSTRUCTION.

revisions

Number	Date
--------	------

DAVID MASON & ASSOCIATES, INC. consultants
Architecture / Engineering / Planning / Interior Design
1330 Mackland Avenue St. Louis, Missouri 63110
(314)645-6160

STALLON MISSOURI
ZIPPS DRIVE-THRU
SANITARY SEWER