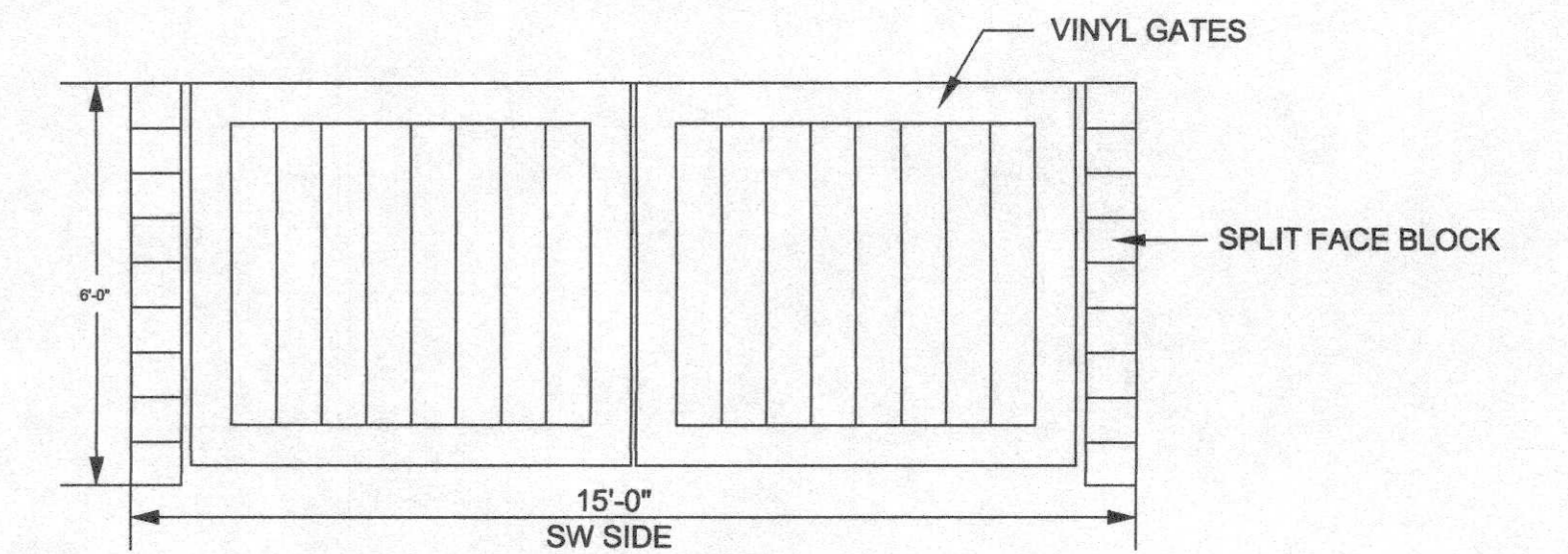
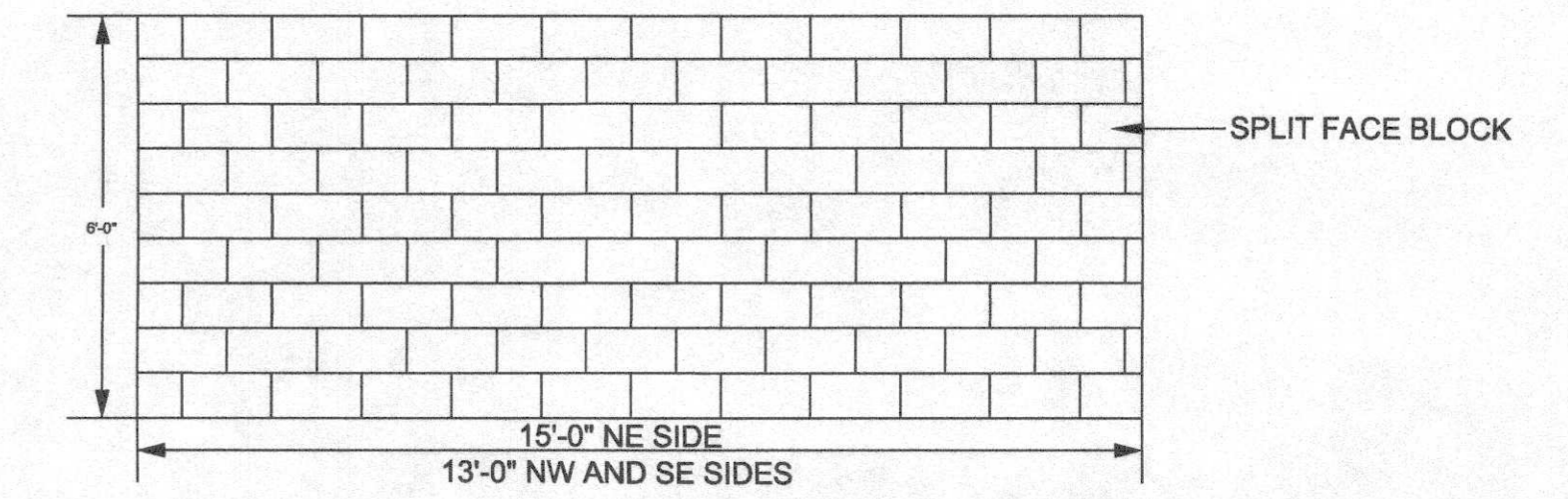
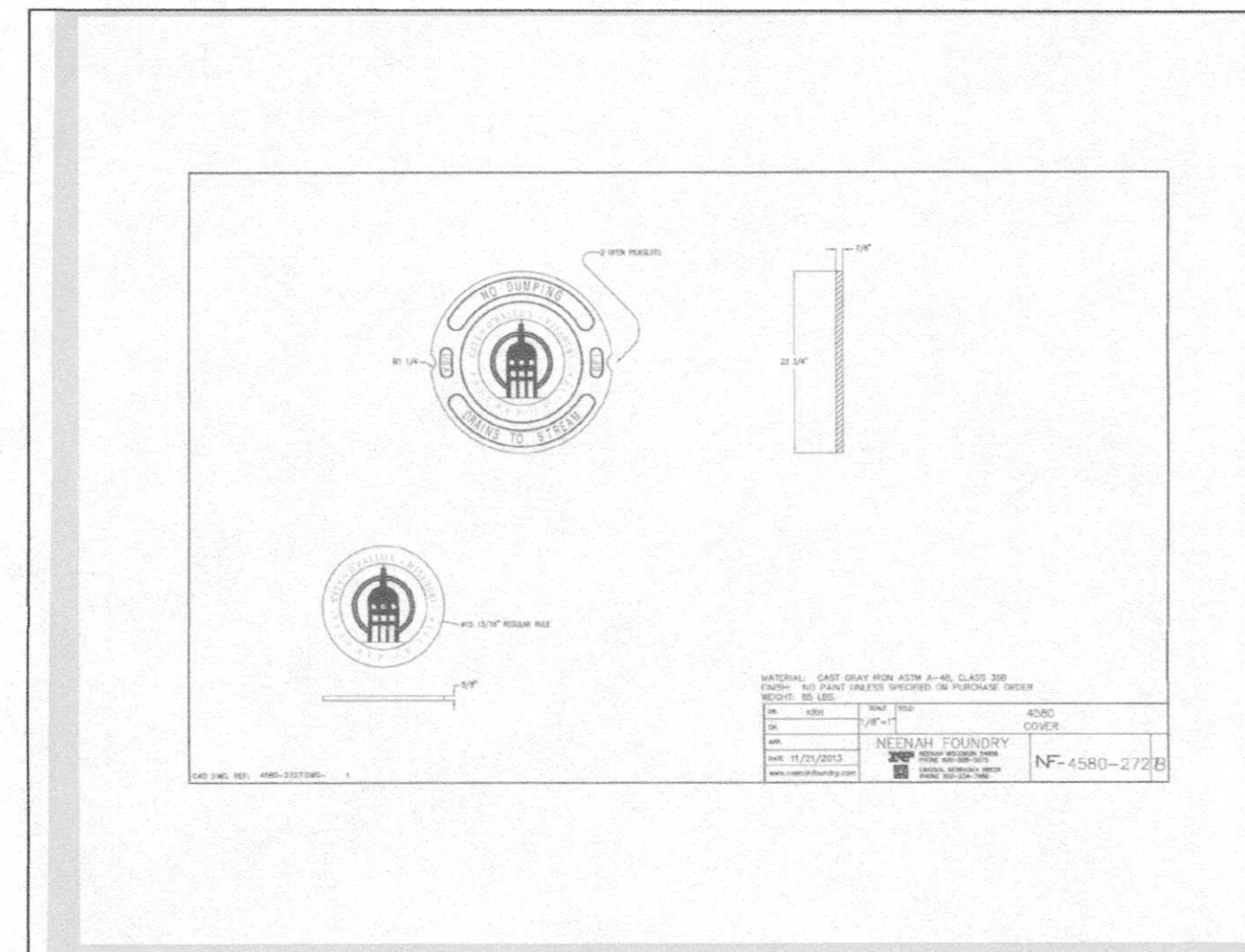
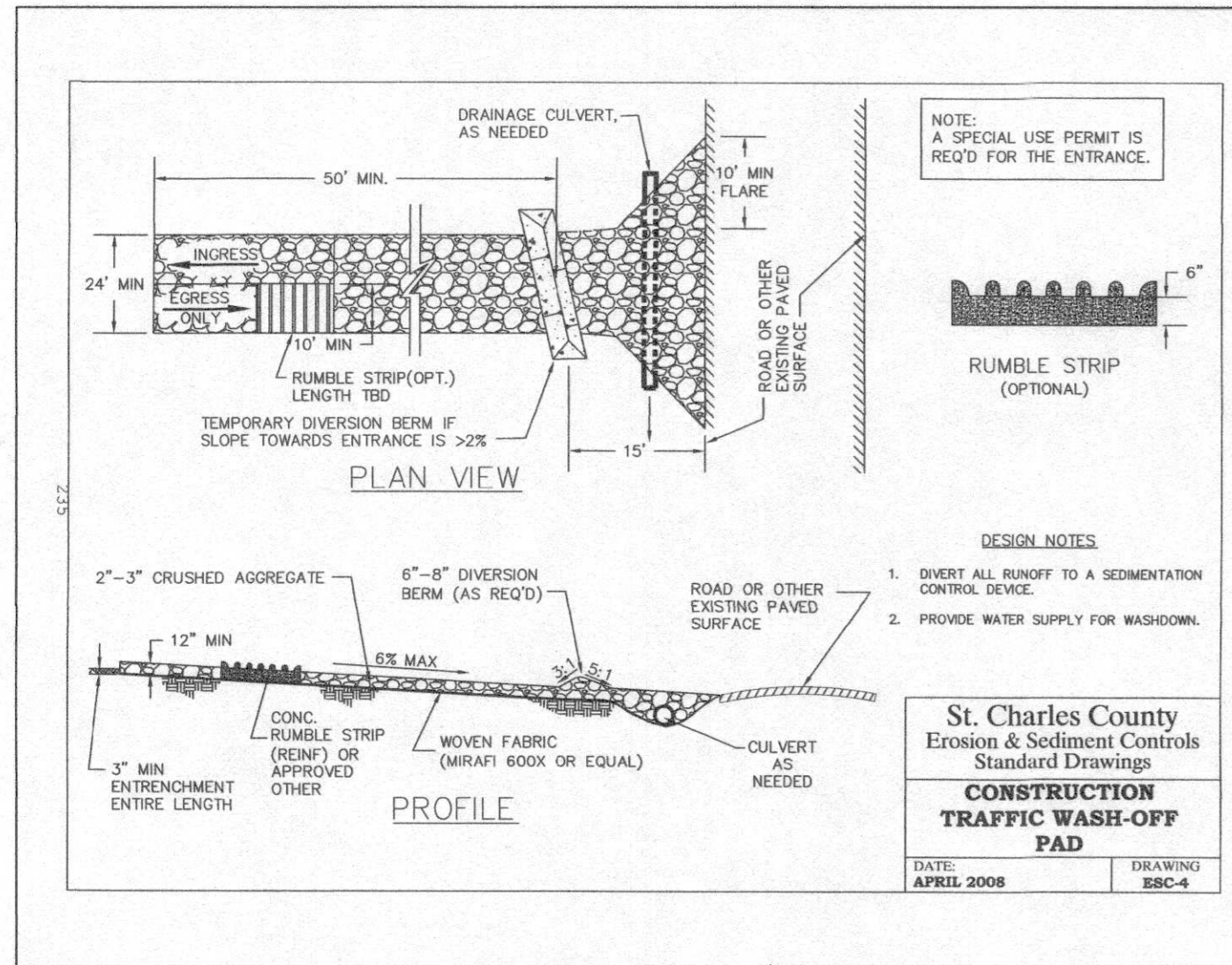
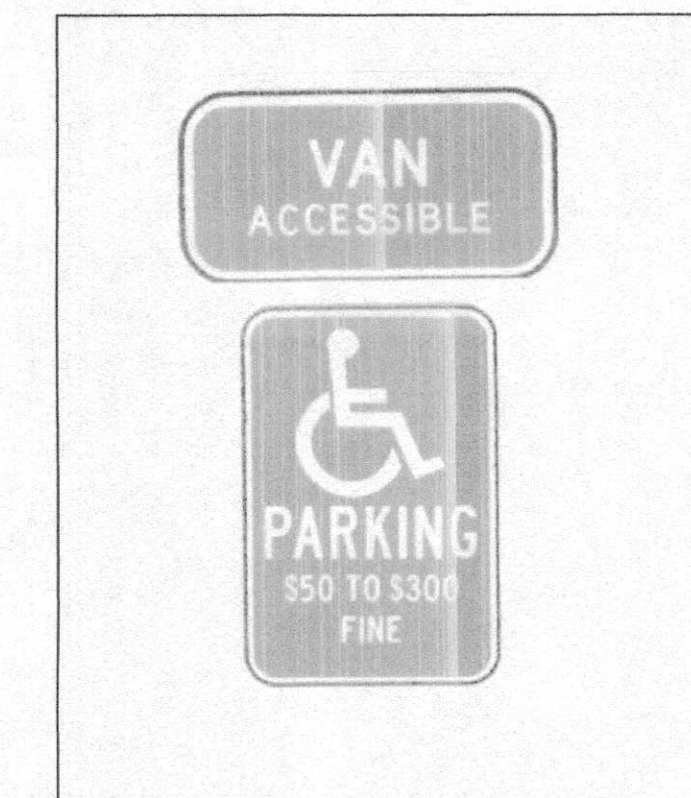
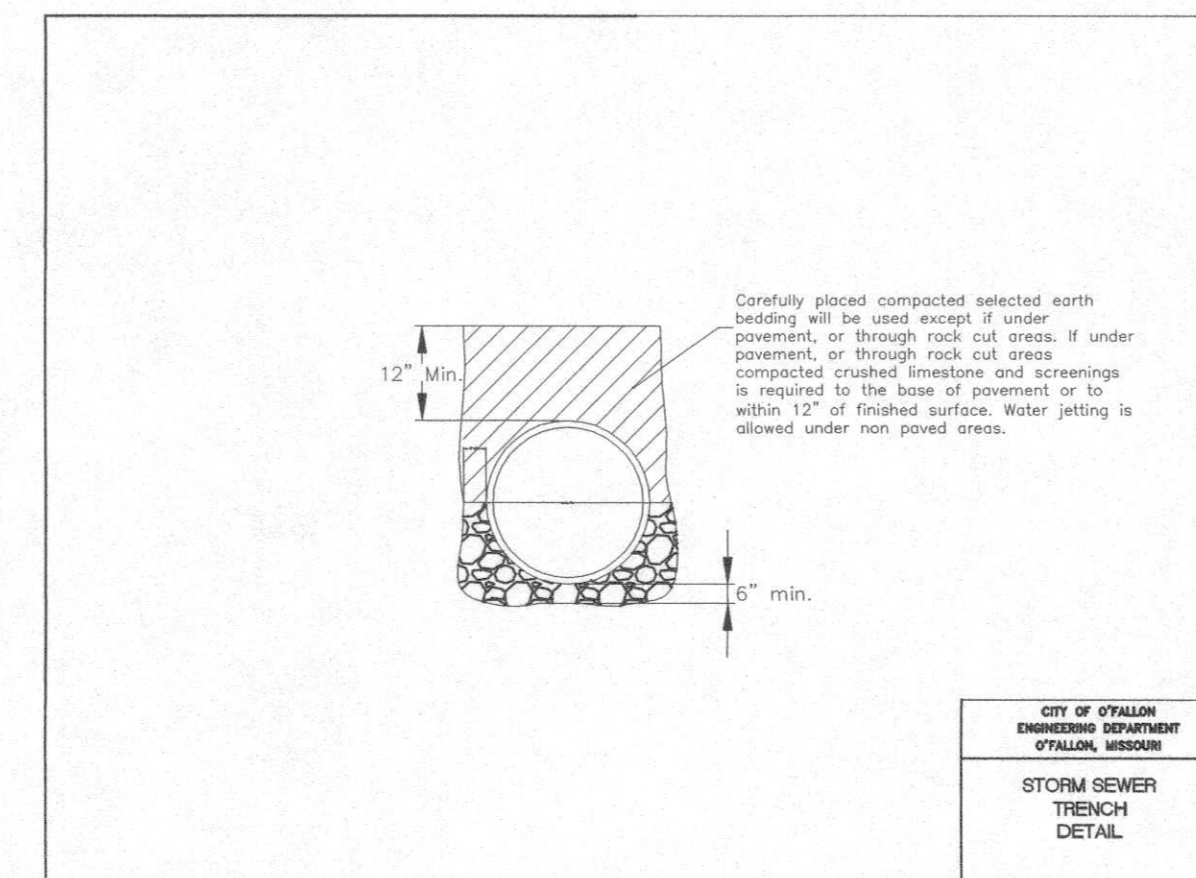
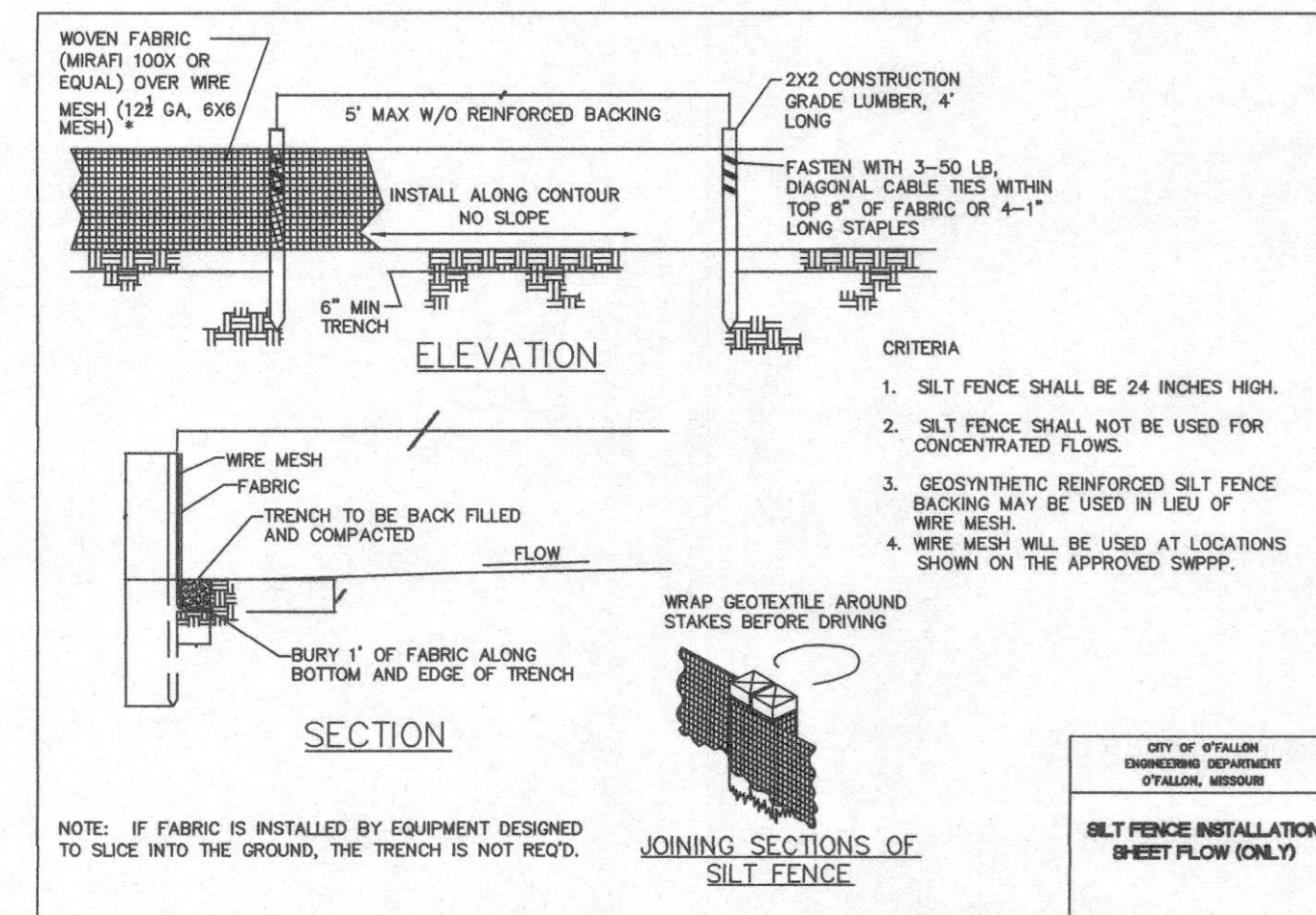


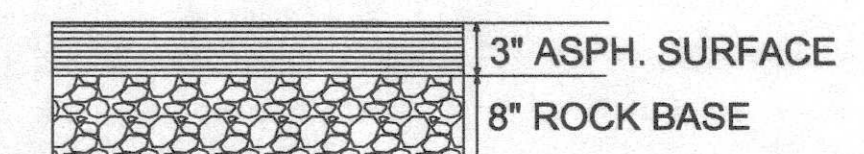
DETAIL SHEET
1075 HIGHWAY P
 SECTION 18, TOWNSHIP 47 NORTH RANGE 3 EAST
 OF ST. CHARLES COUNTY, MISSOURI



DUMPSTER ENCLOSURE ELEVATIONS
 1/4" = 1'-0"



SIGN TO BE MOUNTED ON POLE.
BOTTOM OF SIGN 4 FEET ABOVE PARKING SPACE.
SIGN SHALL BE INSTALLED PER ADA REQUIREMENTS.



PARKING LOT TYPICAL SECTION

REVISED 2-25-2020

8792 : 1075 HIGHWAY P DETAIL SHEET

For: MARK KERN MC HOTEL 1804 BORMAN CIR DR #150 SAINT LOUIS, MISSOURI, 63146 314-339-6600	REV. DATE DESCRIPTION BY CHKD
E. KRUSSEL, LLC 36 THOREAU COURT O'FALLON, MO. 63366 636-544-1691	ORDER NO. 8792S
	DATE: FEBRUARY 12, 2019
	DRAWN: JEW
	CHECKED: JAW

