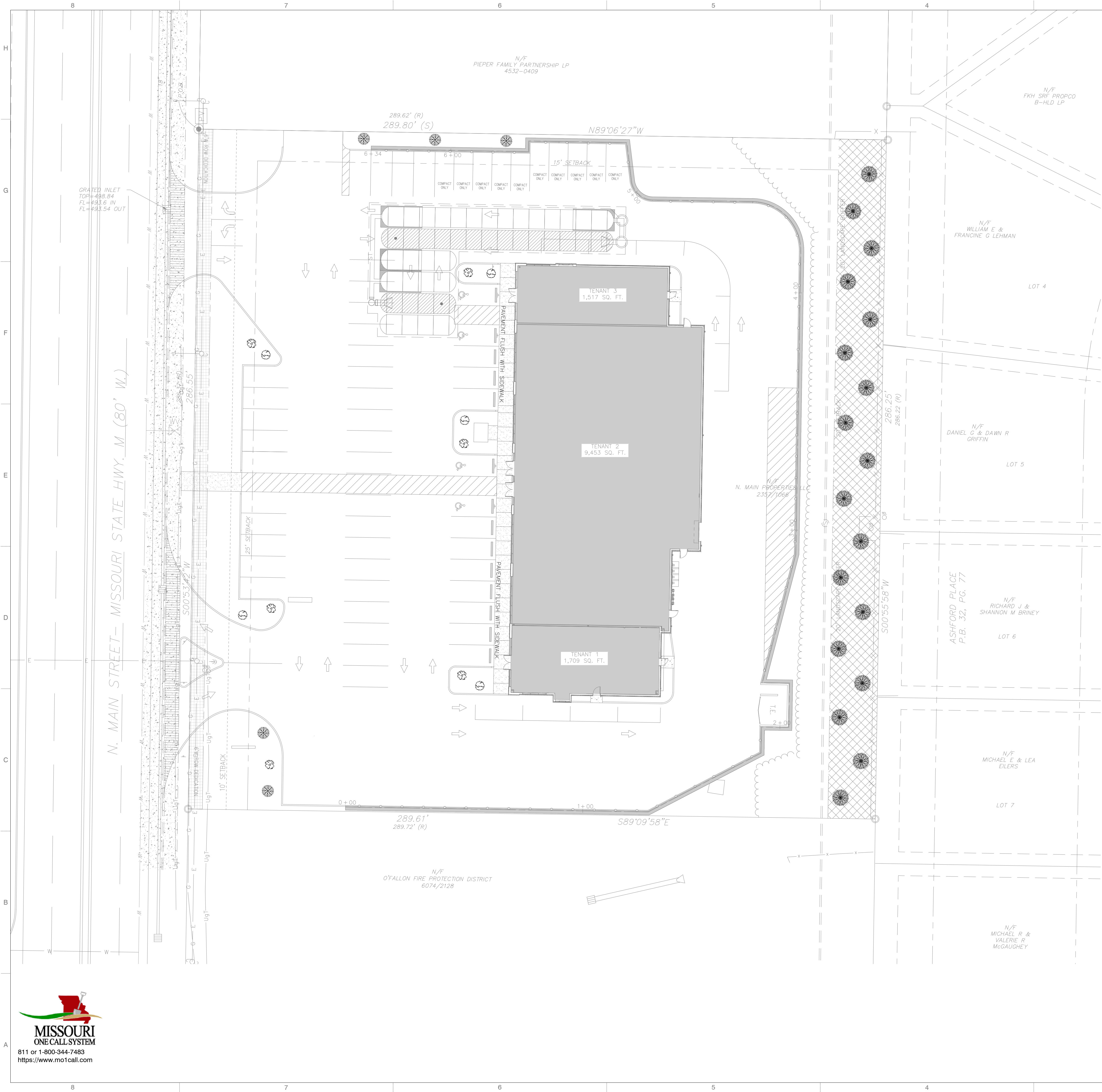


A:\320-2001\320-241-CADD\DWG\DWG\320241-C201-C201.dwg C:\Users\jg\OneDrive\Documents\320241-C201-C201.dwg - 6/7/2024 10:54 AM



LANDSCAPE CALCULATIONS

STREET TREES: 1 TREE PER EVERY 40.00' OF PUBLIC/PRIVATE STREET FRONTAGE.

TREES REQUIRED: $286' \div 1 \text{ TREE/EVERY } 40.00' = 7 \text{ REQUIRED}$

SITE TREES: 1 PER 3,000 SQ. FT. OF OPEN SPACE = 7 TREES

TREES PROVIDED: 7 STREET TREES + 8 SITE TREES = 15 TREES plus existing forested area to remain

16 TREES PROVIDED PLUS REMAIN EXISTING TREES

PARKING LOT LANDSCAPING:

NUMBER OF PROPOSED PARKING STALLS = 57

LANDSCAPING AREA REQUIRED = $57 \times 270 \times 6\% = 923 \text{ SQ. FT.}$

LANDSCAPING PROVIDED = 1,039 SQ. FT.

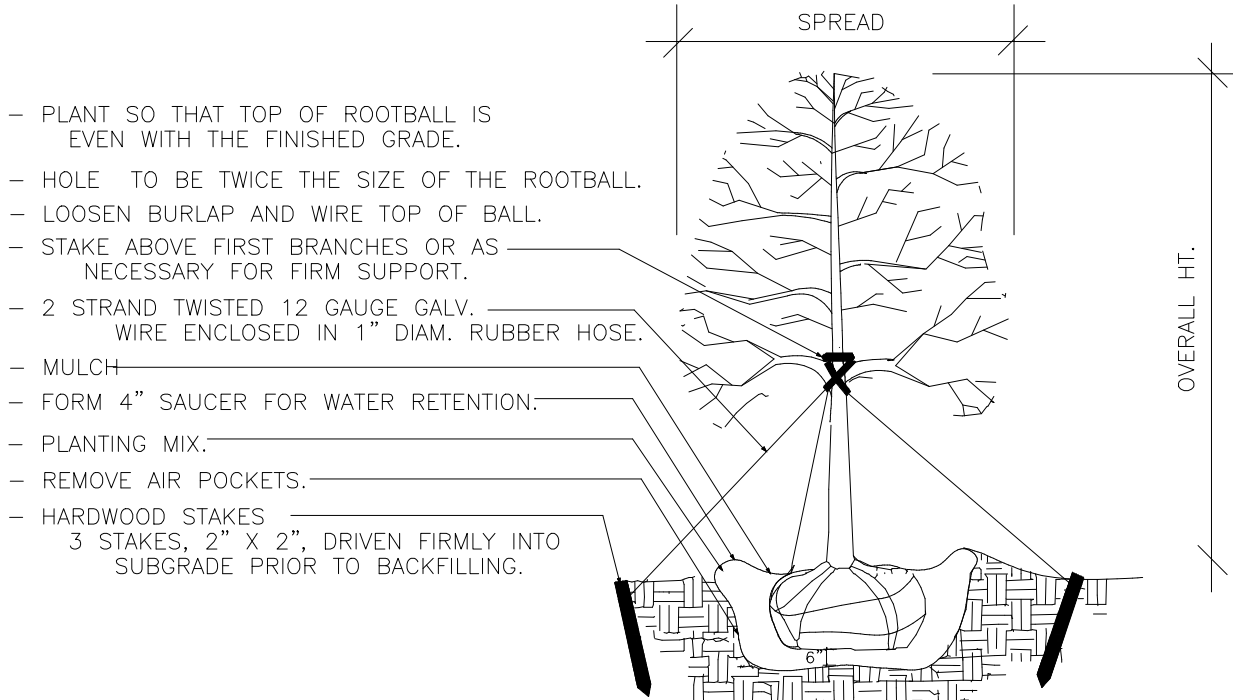
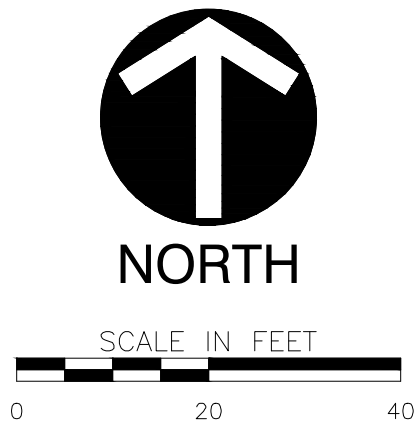
SYMBOL	QUANTITY	COMMON NAME	BOTANTICAL NAME	HEIGHT
	5	PIN OAK	QUERCUS PALUSTRIS	<45'
	6	PLUM PURPLE-LEAF	PRUNUS CERASIFERA	15'
	5	EASTERN REDBUD	CERCIS CANADENSIS	15'
	18	EASTERN RED CEDAR	JUNIPERUS VIRGINIANA	<30'

**CONIFER TREES MUST BE A MINIMUM OF 6' IN HEIGHT.

**DECIDUOUS TREES MUST BE A MINIMUM OF 2" IN CALIPER

FINAL TREE SELECTIONS AND LOCATIONS TO BE SHOWN ON CONSTRUCTION PLANS

NATIVE GRASSES/PLANT GROUNDCOVER MIX



L3.1-01 TREE STAKING/PLANTING DETAIL
N.T.S.

LANDSCAPE NOTES

- FINAL TREE SELECTION AND LOCATIONS SHALL BE SHOWN ON THE CONSTRUCTION PLANS.
- ALL TREES SHALL BE PLANTED PER SECTION 402.130 - TREE PLANTING STANDARDS - OF THE CITY OF O'FALLON MUNICIPAL CODE.
- DECIDUOUS TREES SHALL BE A MINIMUM OF 2" CALIPER AT TIME OF PLANTING.
- CONIFEROUS TREES SHALL BE A MINIMUM OF 6' IN HEIGHT AT TIME OF PLANTING.

NORTH MAIN PROPERTIES
LANDSCAPE PLAN



Civil & Environmental Consultants, Inc.
3000 Little Hills Expressway · Suite 102 · St. Charles, MO 63301
314-656-4566 · 866-250-3679
www.cecinc.com

MBR MANAGEMENT
NORTH MAIN PROPERTIES
201 N. MAIN STREET, SUITE 300
ST. CHARLES, MO

Revision Date: 6/5/2024

P+Z No.
Approval Date: 1/6/2022
Permit No: 21-008100

Page No.
C201