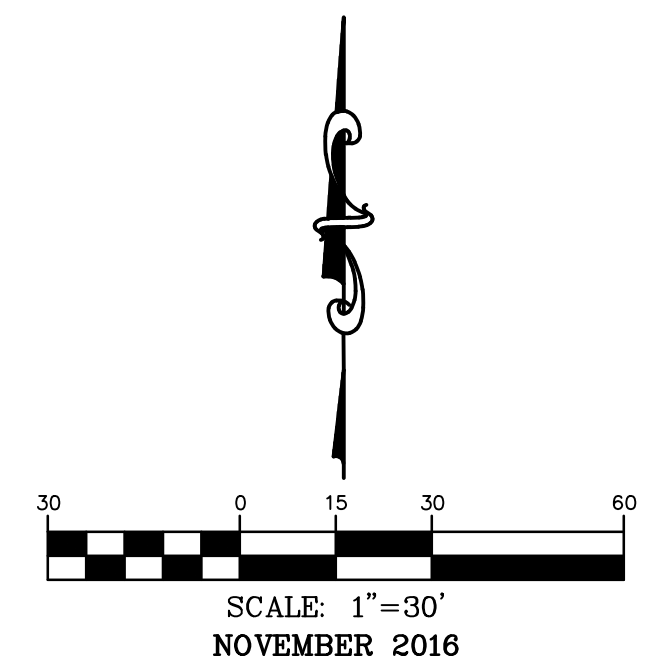
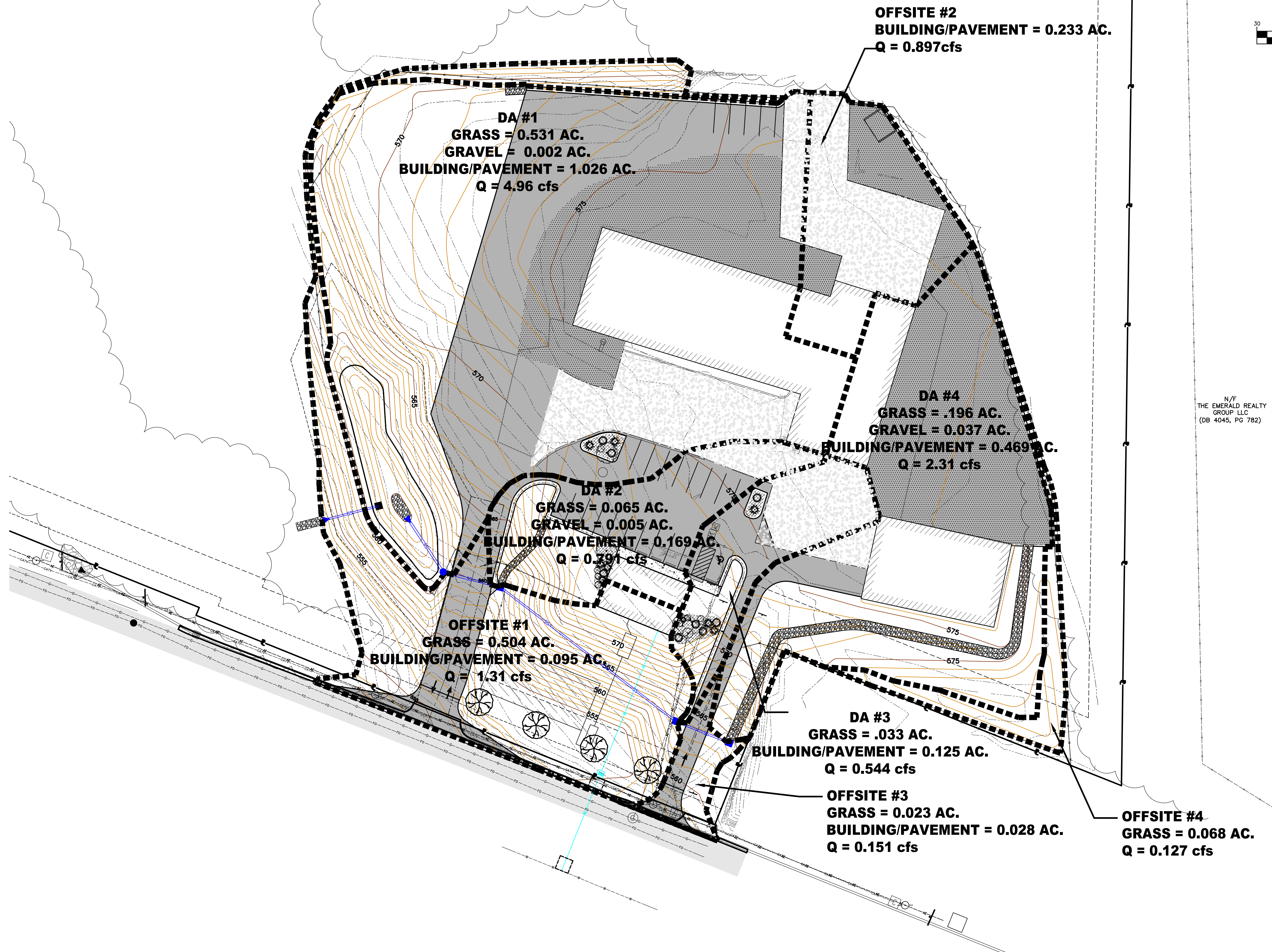


STORM SEWER DRAINAGE AREA MAP



N/F
THE EMERALD REALTY
GROUP LLC
(DB 4045, PG 782)

636-332-4574 (tel.)
636-327-0760 (fax)
www.cochranengineering.com

COCHRAN

- Civil Engineering
- Land Surveying
- Architecture
- Site Development
- Construction
- Master Planning

North Office
8 East Main Street
Wentzville, Missouri 63385

ERIC SCOTT
KIRCHNER
E-2001004618

DATE

Eric S. Kirchner No. E-2001004618
Registered Professional Engineer
State of Missouri
for Cochran Engineering & Surveying

Developer / Owner Information:
C Bennett Premium Building Supplies
1285 W. Terra Lane
O'Fallon, MO 63366

City of O'Fallon Standard Sheet

P+Z No.
Approval Date: 9/1/16
City No.

Page No.
C4