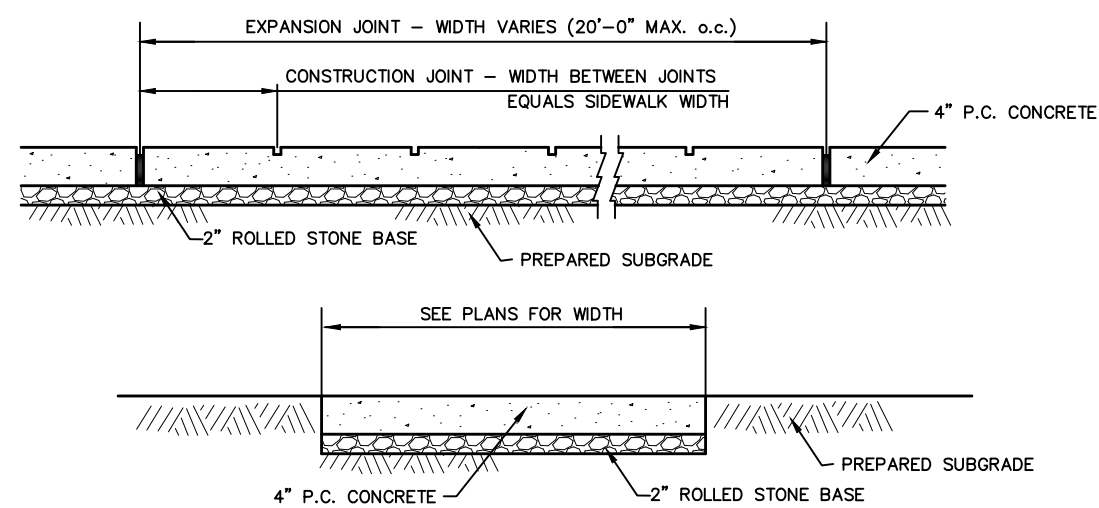


ONSITE PAVEMENT DETAIL
NOT TO SCALE

- NOTE:
 1. ALL GRANULAR ROLLED STONE BASE UNDER PROPOSED CONCRETE MUST BE COMPACTED TO 95% OF THE MAXIMUM DENSITY AS DETERMINED BY THE STANDARD PROCTOR TEST AASHTO-99.
 2. CONCRETE COMPRESSIVE STRENGTH SHALL BE 4000 PSI IN 28 DAYS.

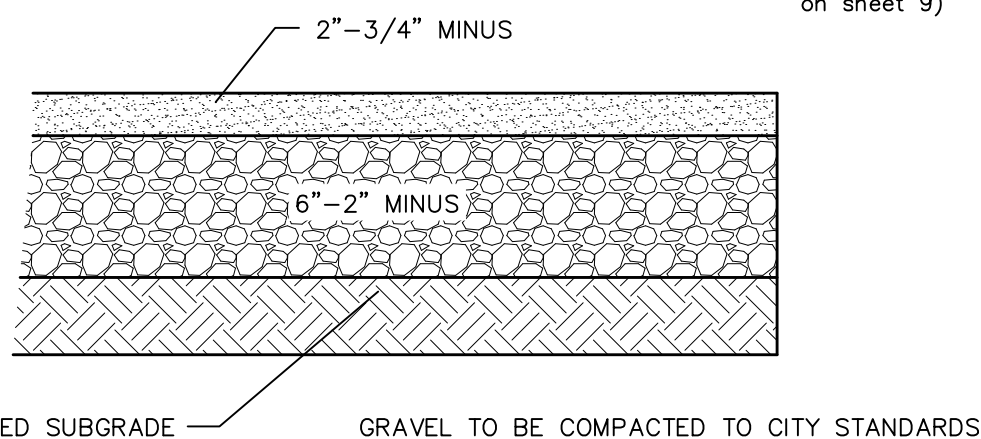


CONCRETE SIDEWALK DETAIL
NOT TO SCALE

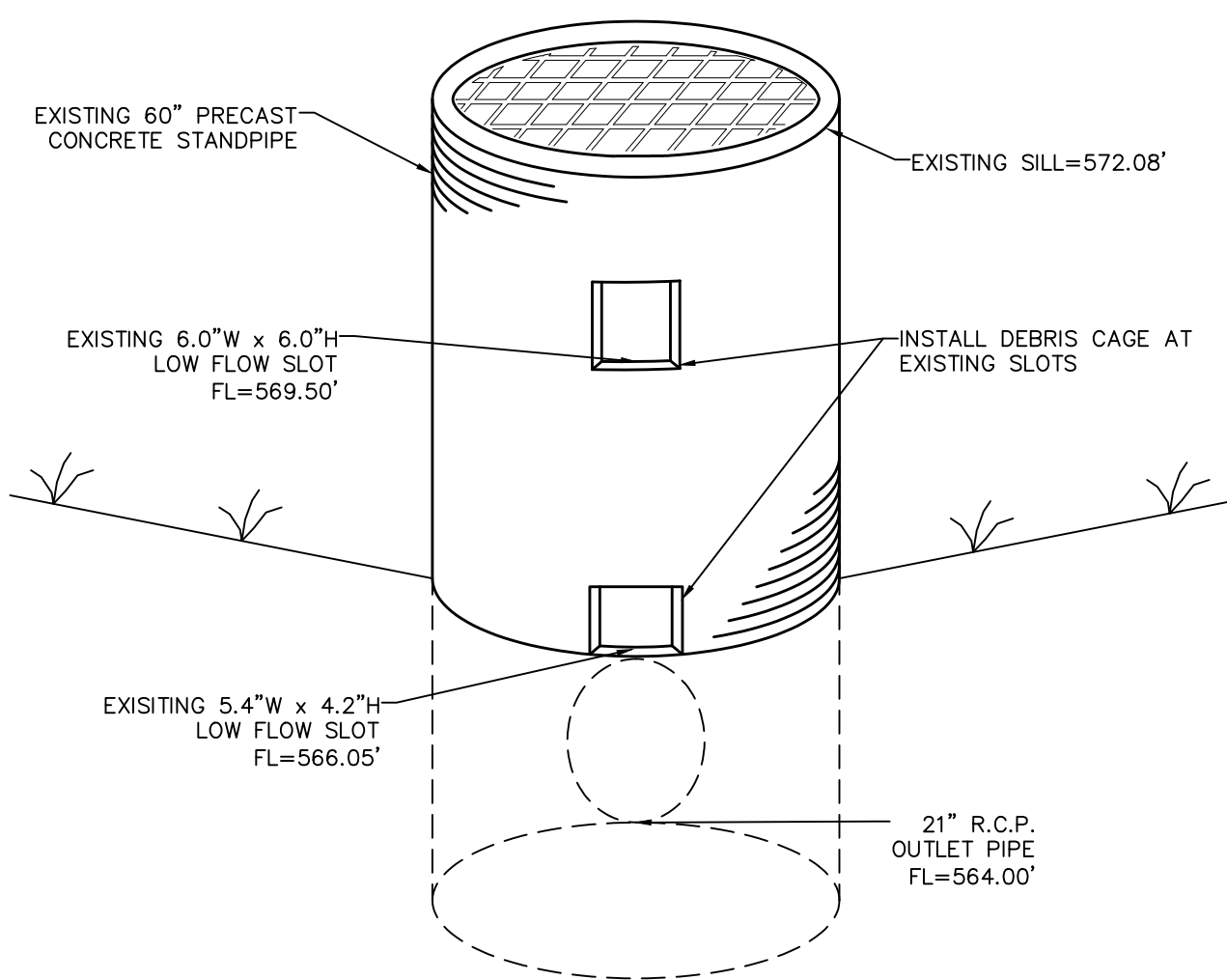
* ALL GRANULAR ROLLED STONE BASE UNDER PROPOSED CONCRETE MUST BE COMPACTED TO 95% OF THE MAXIMUM DENSITY AS DETERMINED BY THE STANDARD PROCTOR TEST AASHTO-99. CONCRETE COMPRESSIVE STRENGTH SHALL BE 4000 PSI IN 28 DAYS.

PAINTED ACCESSIBLE PARKING SYMBOL
NOT TO SCALE

NOTE: All painted ADA symbols and ADA parking striping shall be blue.

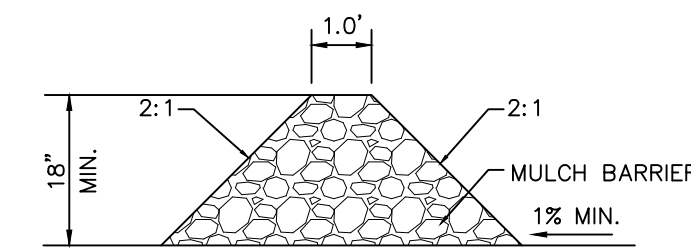


GRAVEL LOT DETAIL
NOT TO SCALE

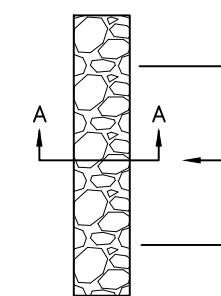


EXISTING OVERFLOW STRUCTURE DETAIL
NOT TO SCALE

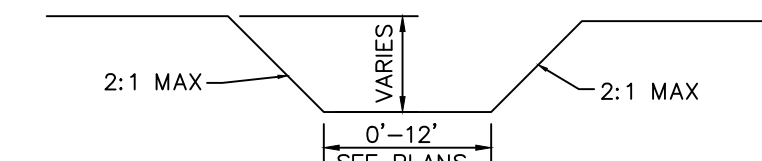
2 YEAR, 20 MIN HIGHWATER = 569.68'
 15 YEAR, 20 MIN HIGHWATER = 570.60'
 50 YEAR, 20 MIN HIGHWATER = 571.03'
 100 YEAR, 20 MIN HIGHWATER = 571.43'
 100 YEAR, 20 MIN (LFB) HIGHWATER = 572.65'



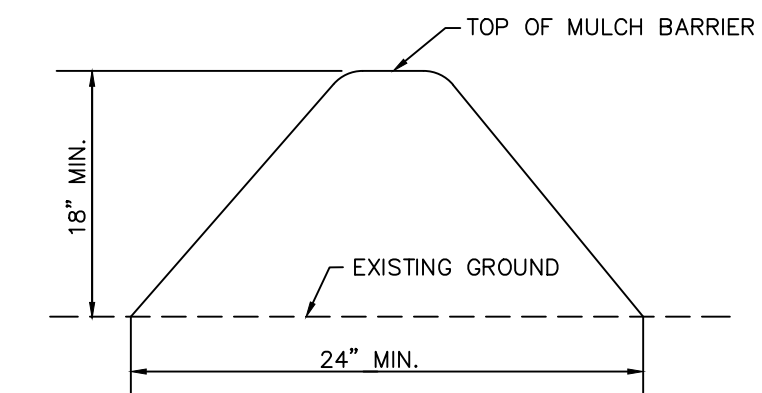
SECTION A-A



GRASS SWALE PLAN

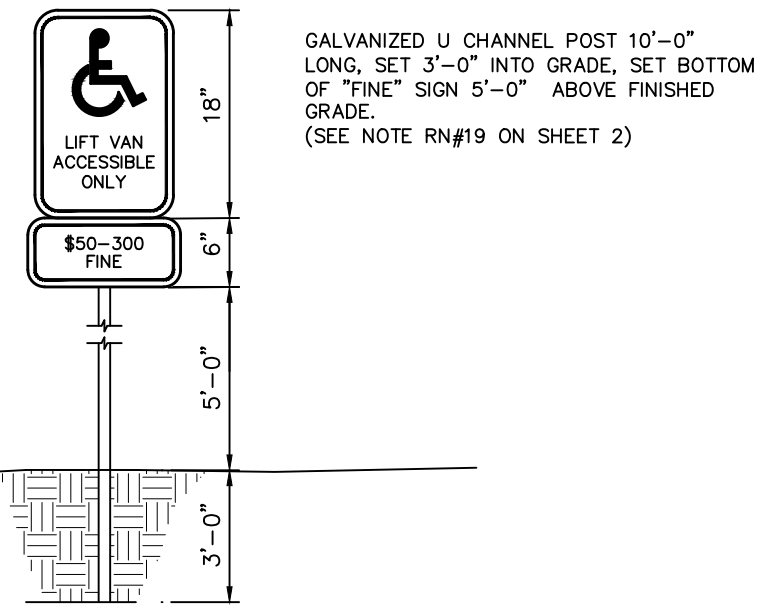


GRASS SWALE SECTION

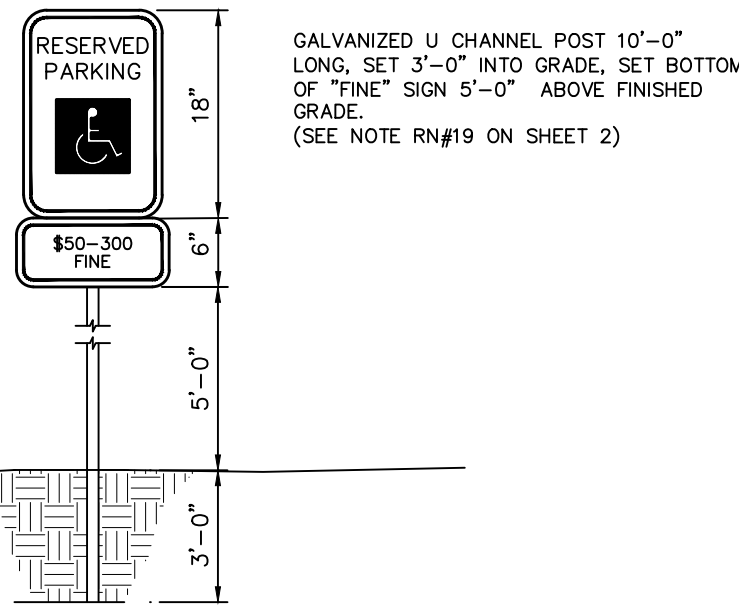


MULCH SEDIMENT BARRIER
NOT TO SCALE

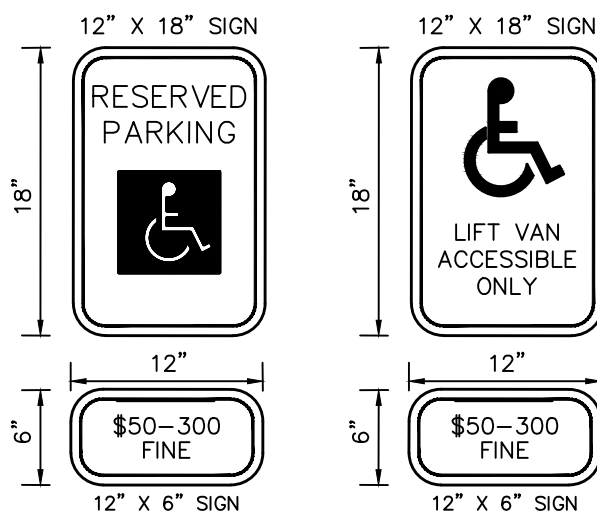
NOTE: CONTRACTOR TO USE MULCH FROM ONSITE CLEARING OPERATIONS WHEN POSSIBLE.



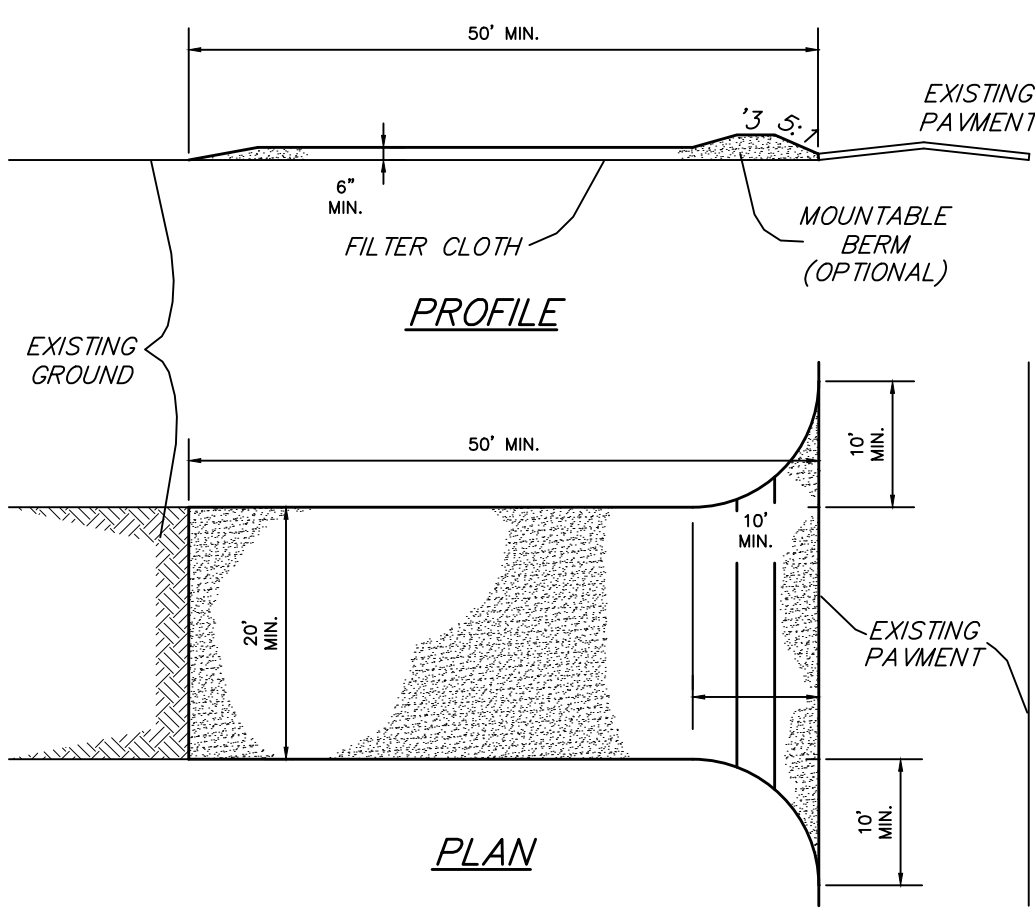
LIFT VAN ACCESSIBLE ONLY PARKING SIGN
NOT TO SCALE



ACCESSIBLE VEHICLE PARKING SIGN
NOT TO SCALE



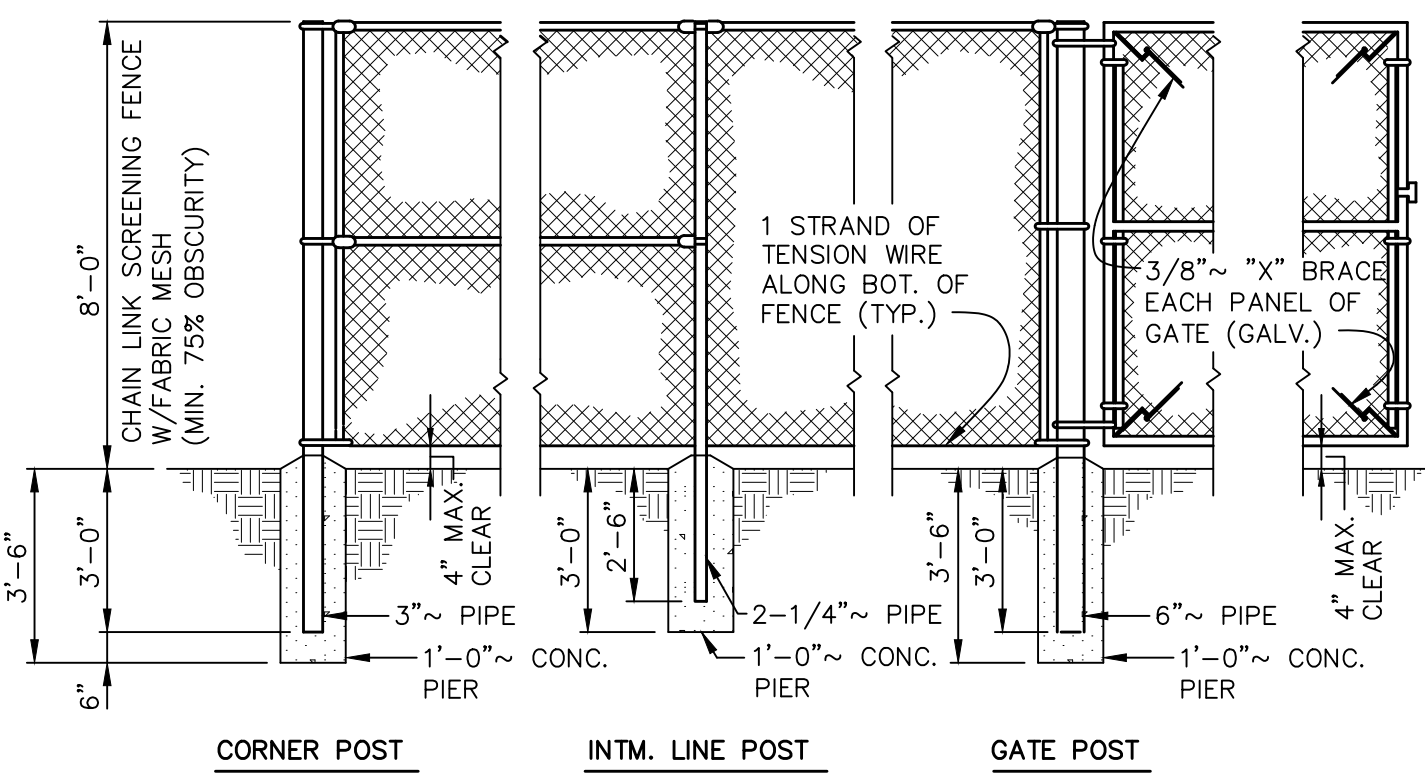
ACCESSIBLE PARKING SIGNS
NOT TO SCALE



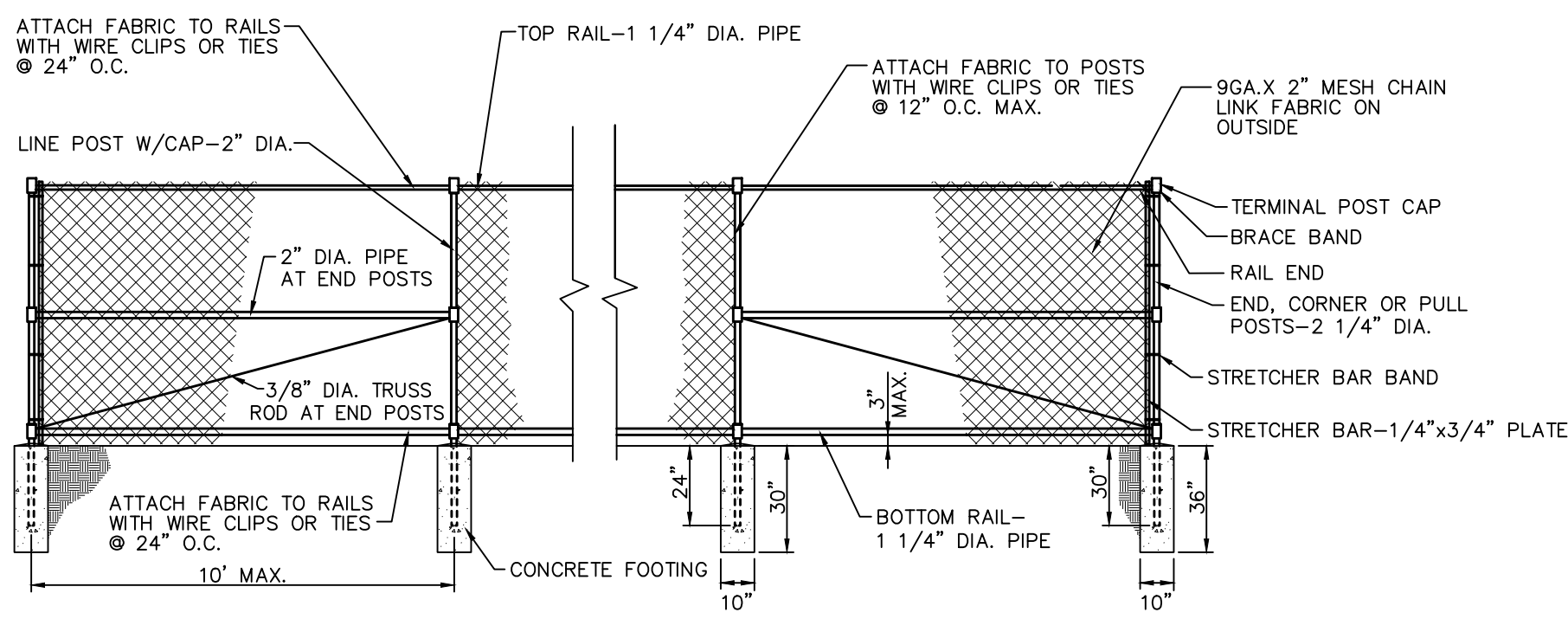
CONSTRUCTION SPECIFICATIONS

- Stone Size - Use 2" stone, or reclaimed or recycled concrete equivalent.
- Length - As required, but not less than 50 feet (except on a single residence lot where a 30 foot minimum length would apply).
- Thickness - Not less than six (6) inches.
- Width - Twenty (20) foot minimum, but not less than the full width at points where ingress or egress occurs.
- Filter Cloth - Will be placed over the entire area prior to placing of stone. Filter will not be required on a single family residence lot.
- Surface Water - All surface water flowing or diverted toward construction entrances shall be piped across the entrance. If piping is impractical, a mountable berm with 5:1 slopes will be permitted.
- Maintenance - The entrance shall be maintained in a condition which will prevent tracking or flowing of sediment onto public rights-of-way. This may require periodic top dressing with additional stone as conditions demand and repair and/or cleanout of any measures used to trap sediment. All sediment spilled, dropped, washed or tracked onto public rights-of-way must be removed immediately.
- Washing - Wheels shall be cleaned to remove sediment prior to entrance onto public rights-of-way. When washing is required, it shall be done on an area stabilized with stone and which drains into an approved sediment trapping device.
- Periodic inspection and needed maintenance shall be provided after each rain.

STABILIZED CONSTRUCTION ENTRANCE/WASHDOWN AREA
NOT TO SCALE

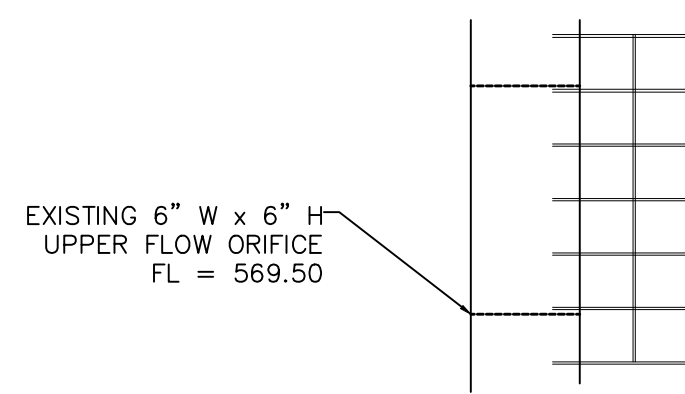


FENCE DETAIL
NOT TO SCALE



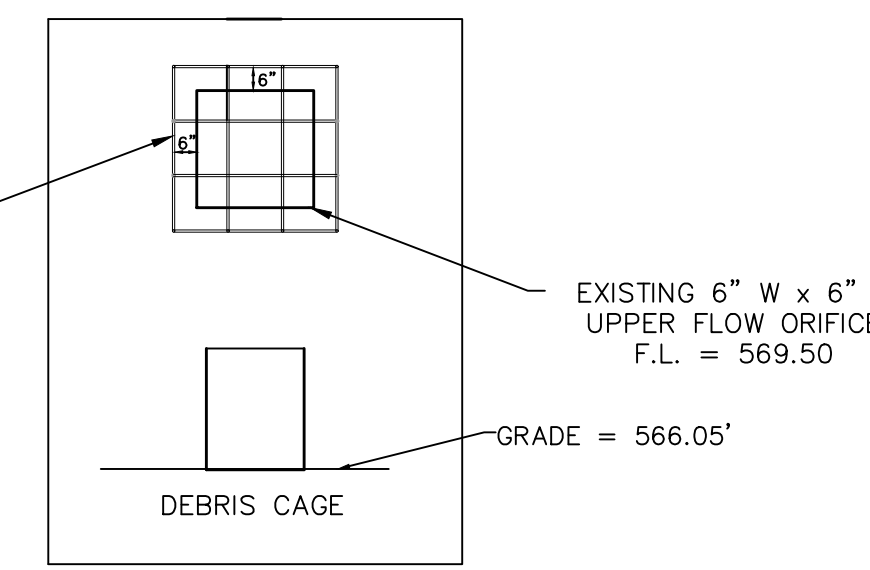
6\"/>

ALL FENCE MATERIALS AND HARDWARE SHALL BE IN ACCORDANCE WITH MCDOT SPECIFICATIONS



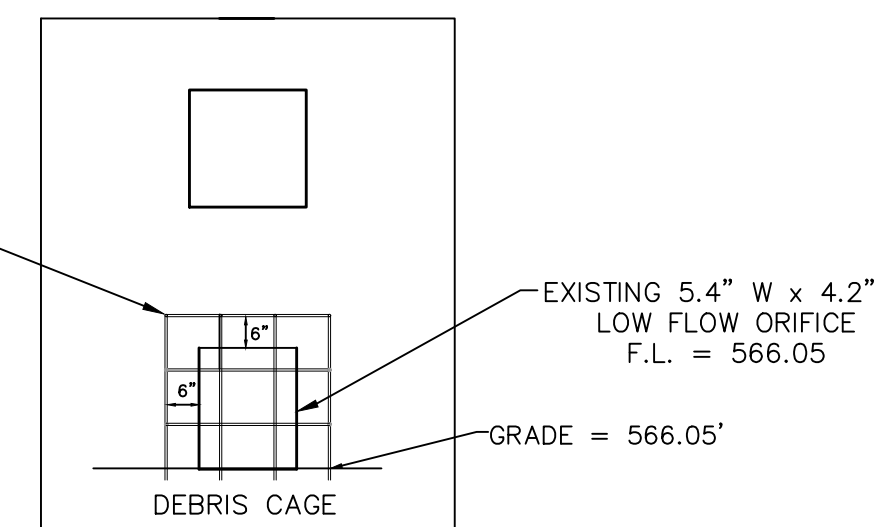
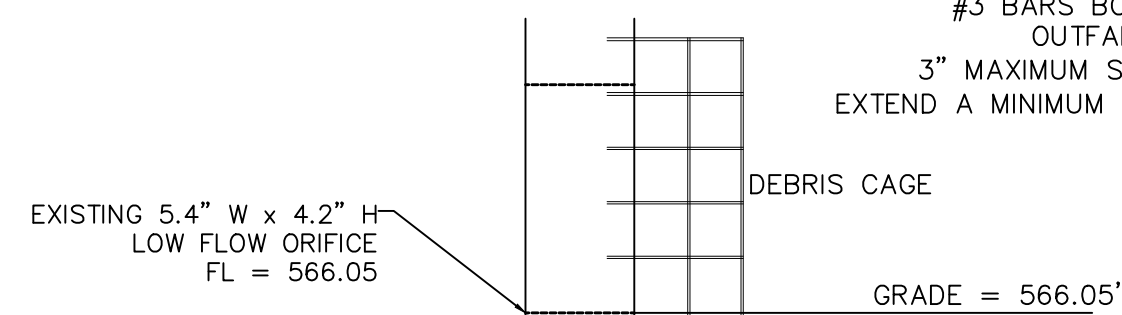
UPPER ORIFICE DEBRIS CAGE
N.T.S.

18"W x 18" H DEBRIS CAGE
 #3 BARS BOLTED IN FOUR PLACES TO OUTFALL STRUCTURE WALL
 3" MAXIMUM SPACING OF REBAR, CAGE TO EXTEND A MINIMUM OF 6" FROM FACE OF STRUCTURE.



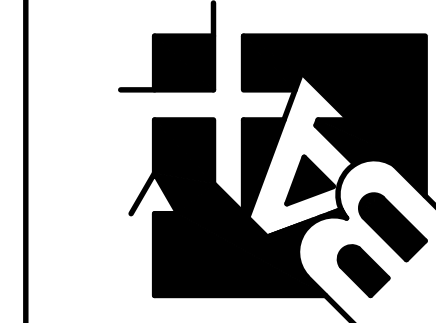
LOWER ORIFICE DEBRIS CAGE
N.T.S.

18"W x 11" H DEBRIS CAGE
 #3 BARS BOLTED IN FOUR PLACES TO OUTFALL STRUCTURE WALL
 3" MAXIMUM SPACING OF REBAR, CAGE TO EXTEND A MINIMUM OF 6" FROM FACE OF STRUCTURE.



PROJECT TITLE:
GRANT WAREHOUSE & STORAGE

ENGINEERING FIRM:
 B&B ENGINEERING SURVEYING
 221 Point View Blvd.
 St. Charles, MO 63301
 636-928-5552
 FAX 928-1718



DISCLAIMER OF RESPONSIBILITY:
 I hereby specify that the documents intended to be authorized by my seal are limited to this sheet, and I hereby disclaim any responsibility for all other drawings, specifications, estimates, reports or other documents or instruments relating to or intended to be used for any part or parts of the architectural or engineering project or survey.

Clifford L. Hellmann
 Civil Engineer
 E29817
 Copyright 2019
 B&B Engineering Company, Inc.
 Engineering Authority No. 000655
 Surveying Authority No. 000144
 All Rights Reserved

REVISIONS	
10-15-19	CITY REVIEW
10-24-19	CITY REVIEW

Developer / Owner:
 MJS&M, L.L.C.
 2209 DROSTE ROAD
 ST. CHARLES, MO 63301
 636-949-0680

P+Z No. #1407.06.01
 Approved September 5, 2019
City No. #

Page No.
 8 of 11