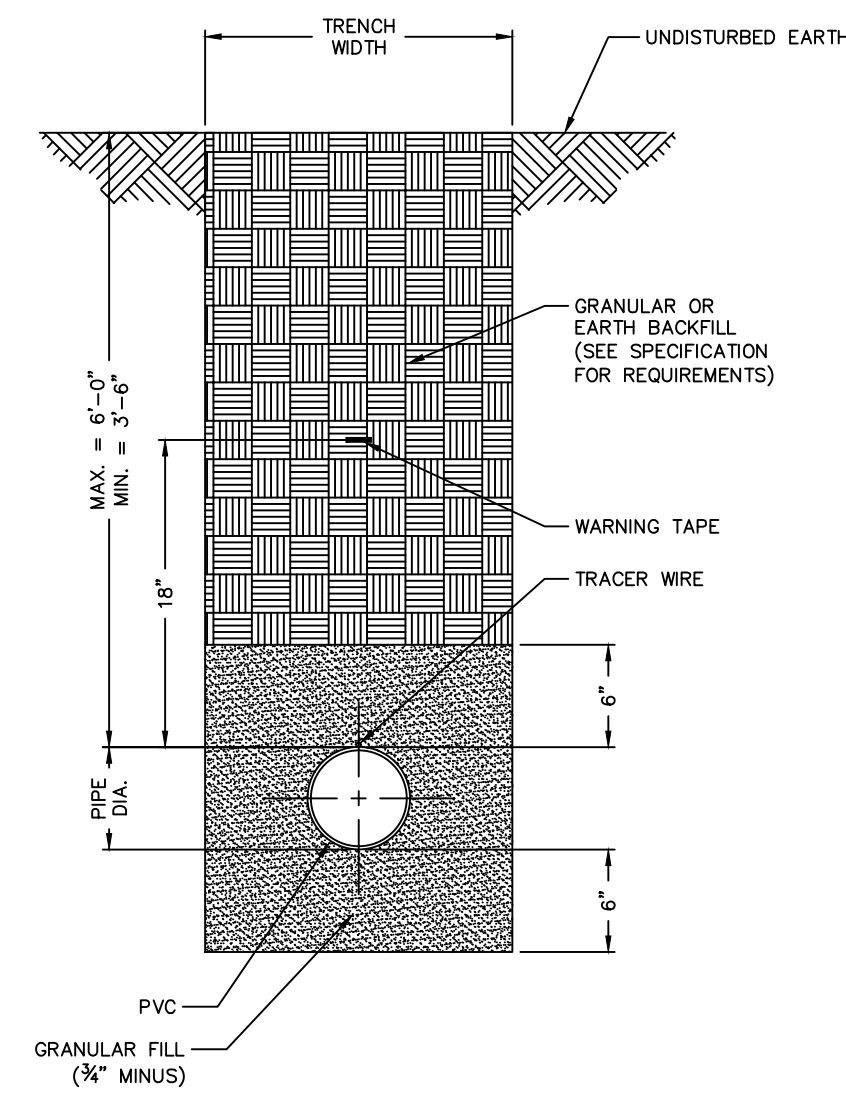


NOTE: THIS DETAIL IS FROM PWS#2

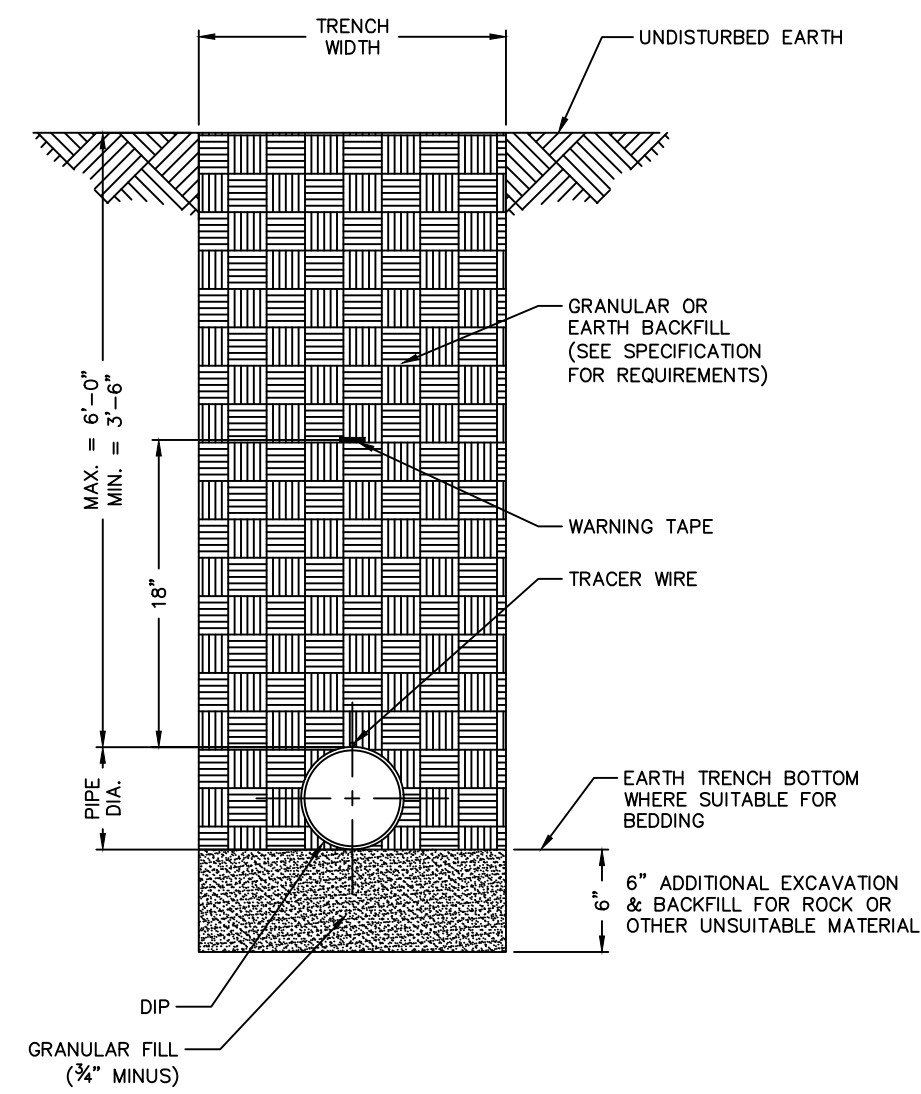


NOTES

- 1) SEE SPECIFICATIONS FOR ADDITIONAL DETAILS FOR BEDDING AND BACKFILL.

TYPICAL TRENCH SECTION FOR PVC PIPE
NOT TO SCALE
DETAIL "A"
PAGE 1 OF 2

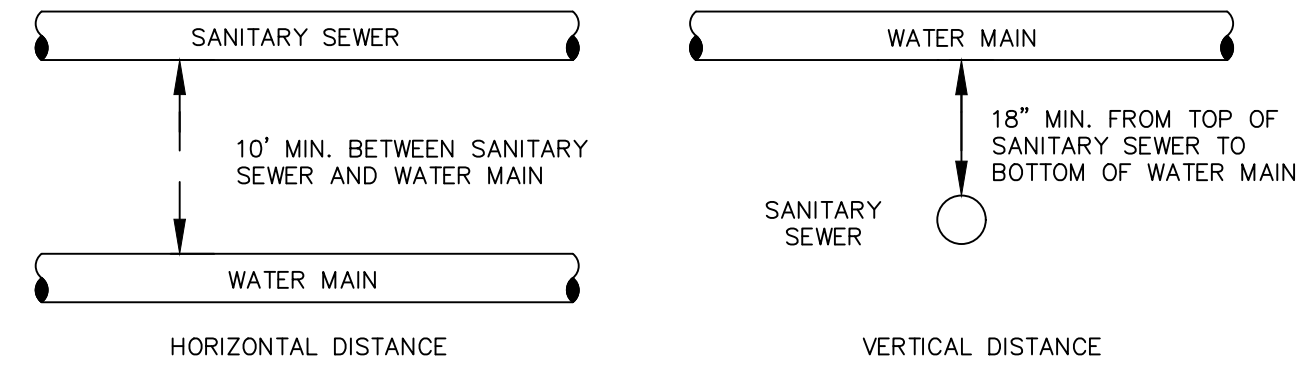
NOTE: THIS DETAIL IS FROM PWS#2



NOTES

- 1) POLYWRAP REQUIRED FOR DUCTILE IRON PIPE
- 2) SEE SPECIFICATIONS FOR ADDITIONAL DETAILS FOR BEDDING AND BACKFILL.

TYPICAL TRENCH SECTION FOR DUCTILE IRON PIPE
NOT TO SCALE
DETAIL "A"
PAGE 2 OF 2

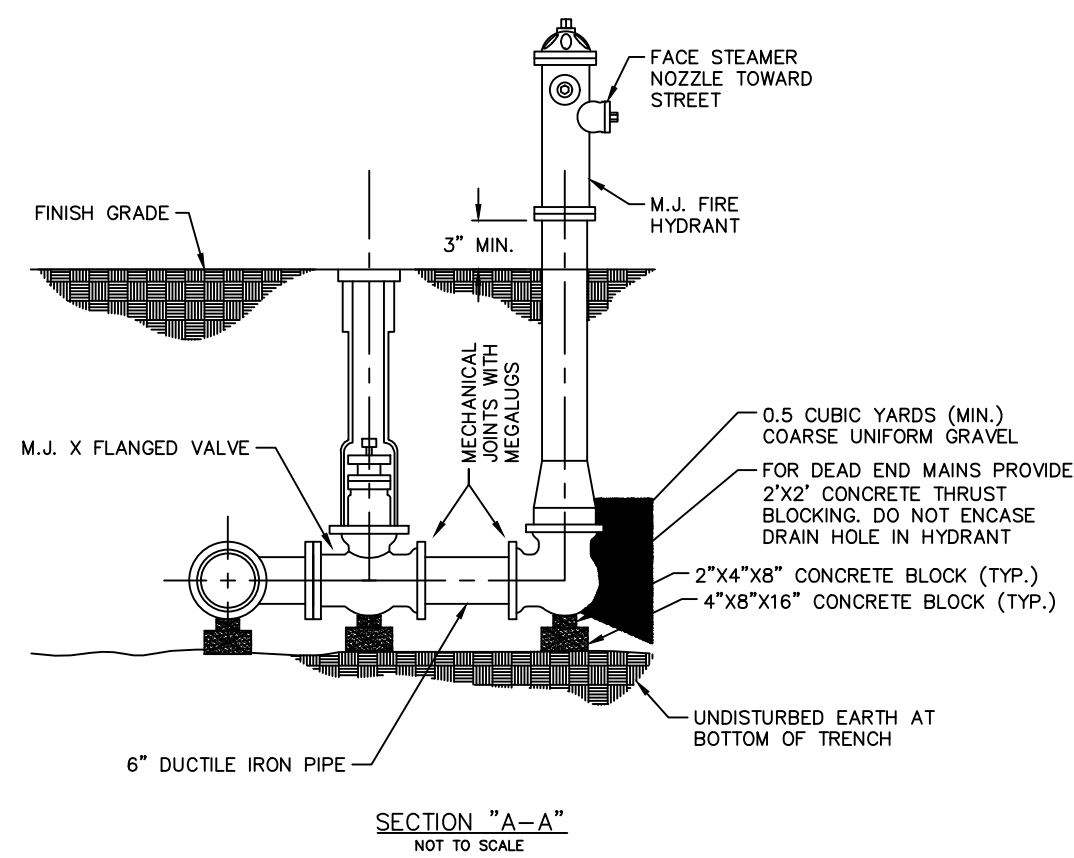
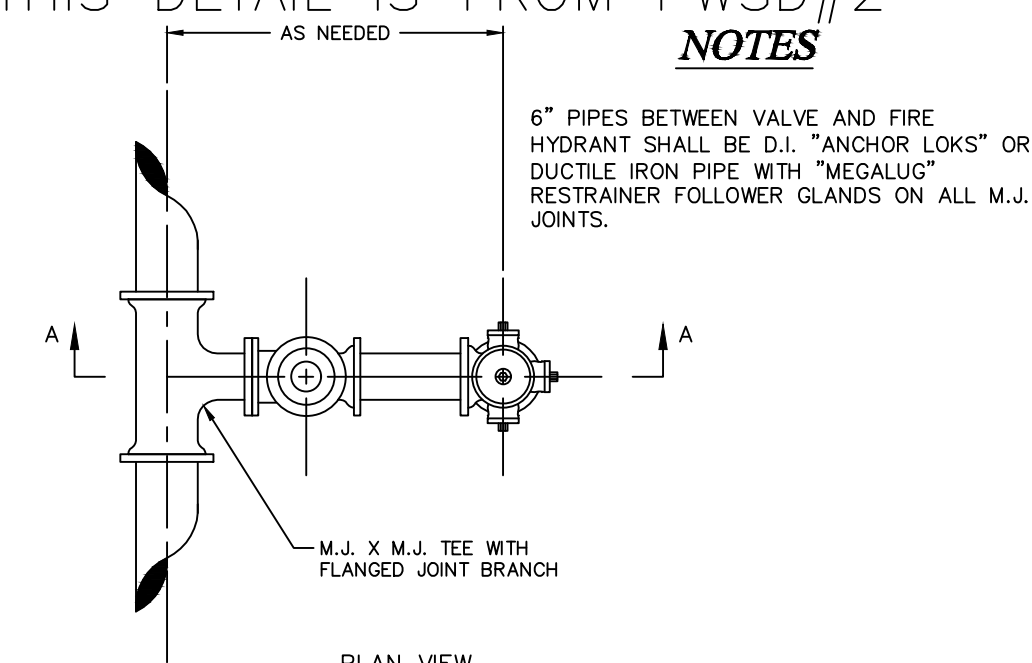


TYPICAL WATER AND SEWER SEPARATION
NOT TO SCALE

CITY OF O'FALLON
ENGINEERING DEPARTMENT
O'FALLON, MISSOURI
WATER AND SEWER SEPARATION DETAIL

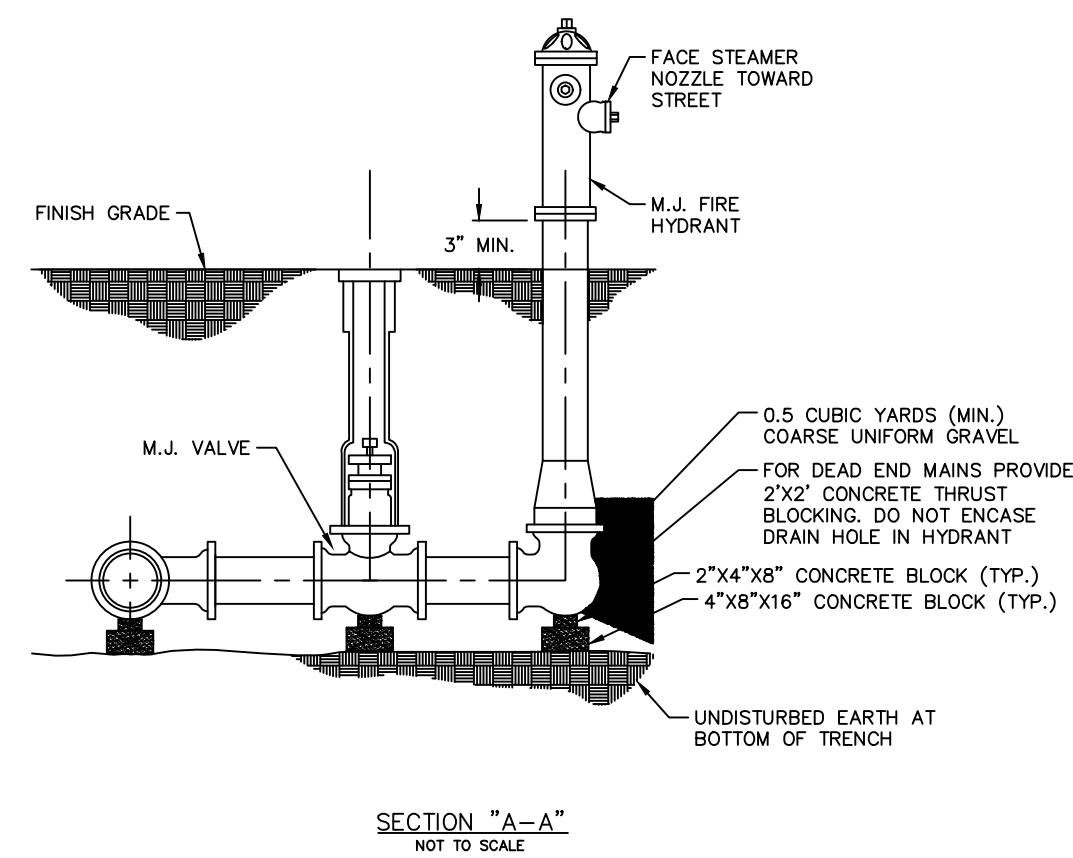
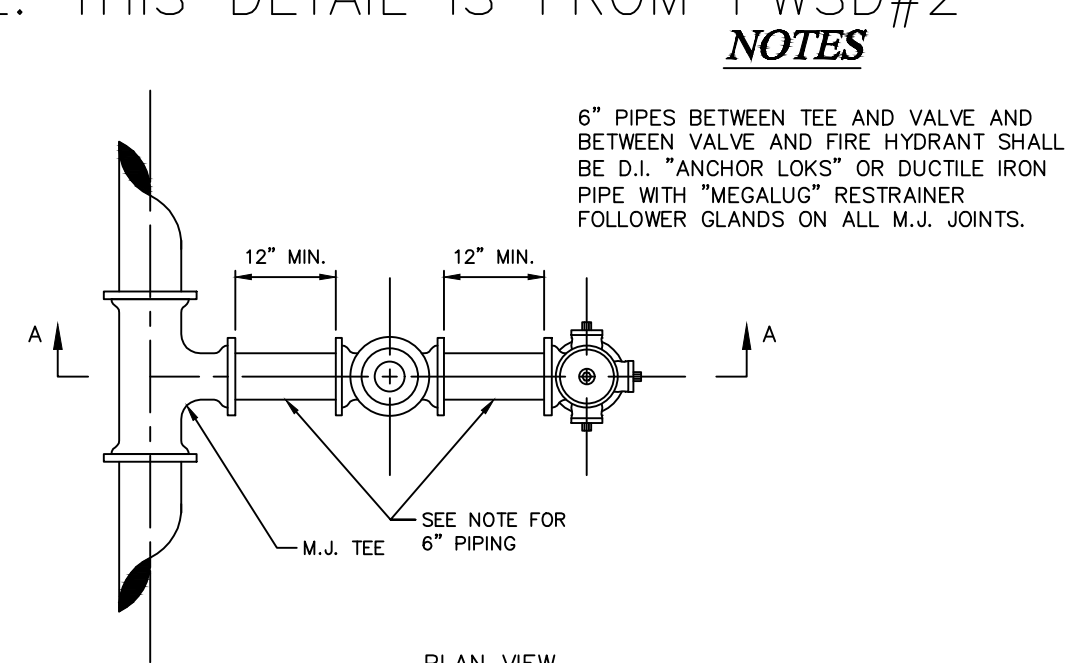
Ductile Iron Pipe installation shall follow the Ductile Iron Research Association (DIPRA) guide line.
The Installation of PVC Pipe shall follow the Uni-Bell PVC Pipe Association Handbook of PVC Design and Construction.

NOTE: THIS DETAIL IS FROM PWS#2



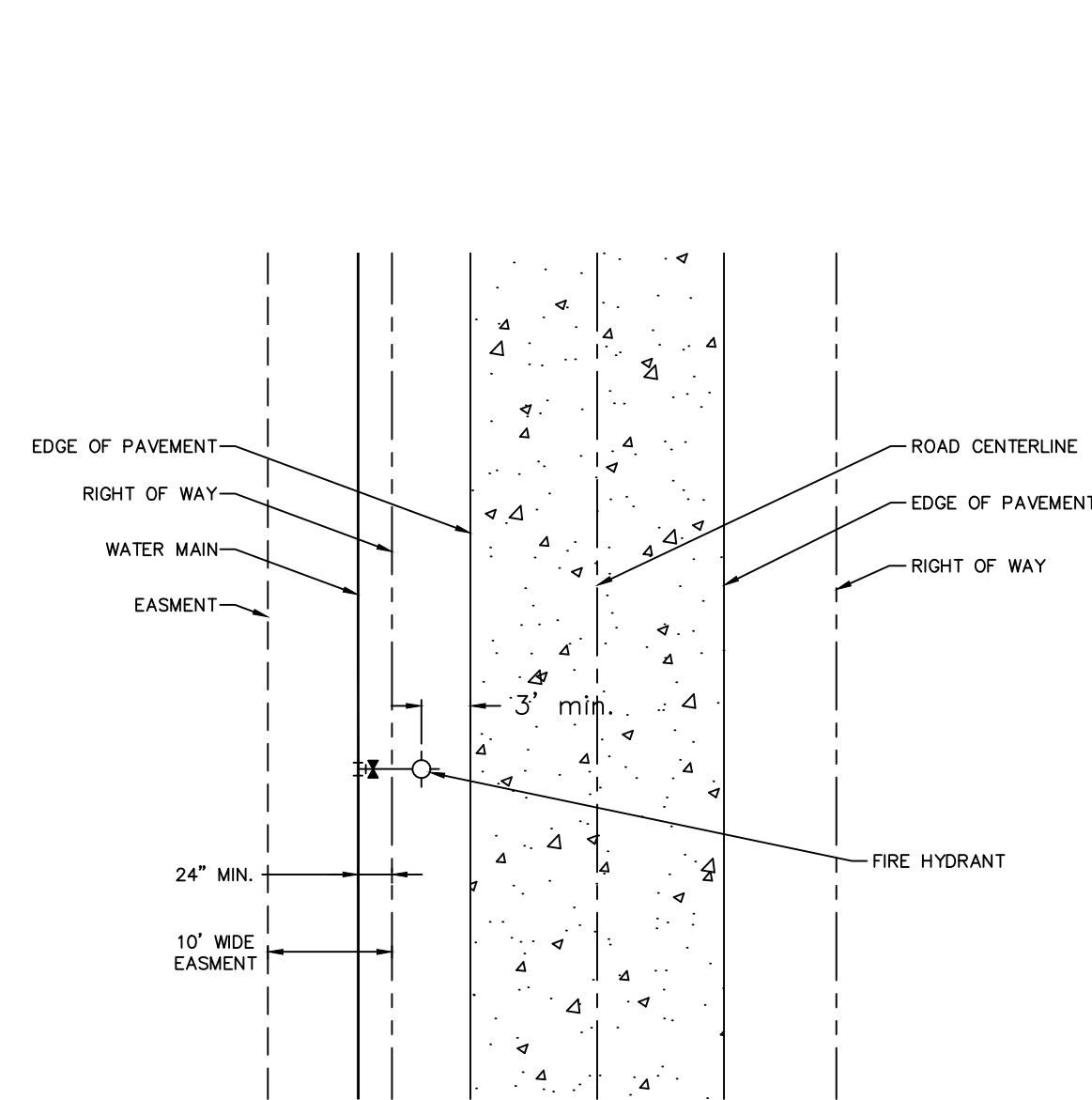
FIRE HYDRANT DETAIL
DETAIL "B"
PAGE 1 OF 3

NOTE: THIS DETAIL IS FROM PWS#2



FIRE HYDRANT DETAIL
DETAIL "B"
PAGE 2 OF 3

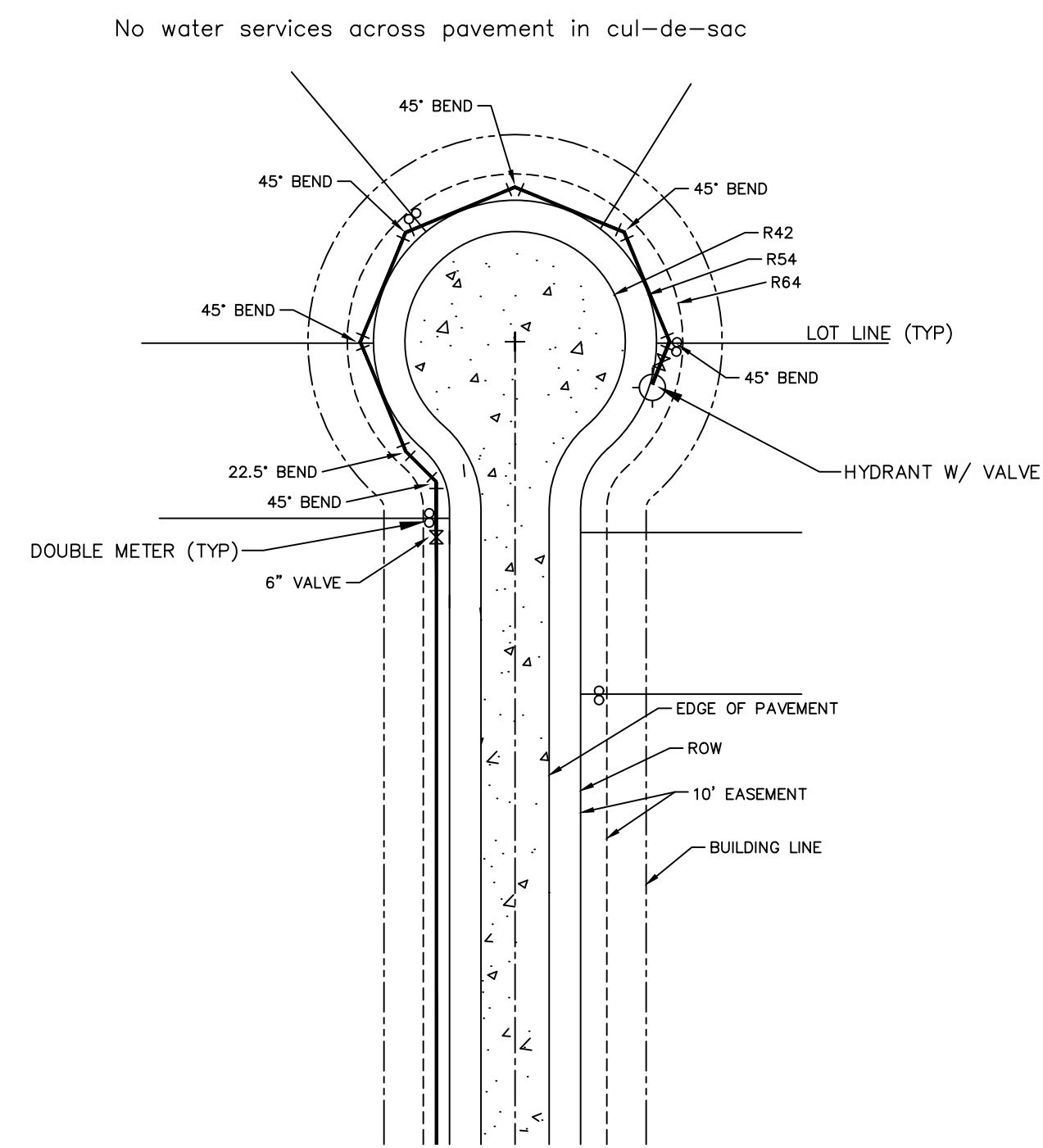
NOTE: MODIFIED DETAIL FROM PWS#2



FIRE HYDRANT DETAIL
NOT TO SCALE

FIRE HYDRANT DETAIL
DETAIL "B"
PAGE 3 OF 3

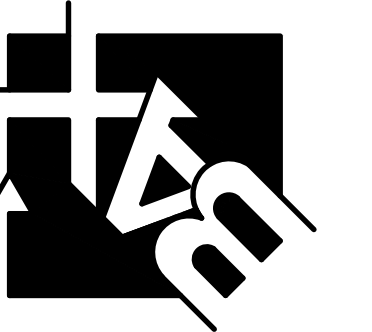
NOTE: MODIFIED DETAIL FROM PWS#2



SMALL COURT DETAIL
NOT TO SCALE
DETAIL "I"
PAGE 1 OF 2

PROJECT TITLE:
GRANT WAREHOUSE & STORAGE PHASE ONE

ENGINEERING
PLANNING
SURVEYING
221 Point View Blvd.
St. Charles, MO 63301
636-928-5552
FAX 928-1718



DISCLAIMER OF RESPONSIBILITY
I hereby specify that the documents intended to be authenticated by my seal are limited to this sheet, and I hereby disclaim any responsibility for all other drawings, specifications, estimates, reports or other documents or instruments relating to or intended to be used for any part or parts of the architectural or engineering project or survey.

REFERENCE DETAILS

REVISIONS

| | |
|----------|-------------|
| 10-15-19 | CITY REVIEW |
| 10-24-19 | CITY REVIEW |
| | |
| | |
| | |
| | |
| | |
| | |
| | |

Developer / Owner:
MJSM, L.L.C.
2209 DROSTE ROAD
ST. CHARLES, MO 63301
636-949-0680

P+Z No. #1407.06.01
Approved April 6, 2017
City No. #

Page No.
10 of 11

ENGINEERS SEAL DOES NOT APPLY TO DETAILS ON THIS SHEET

Site Address: 1300 & 1400 Grant Industrial Drive