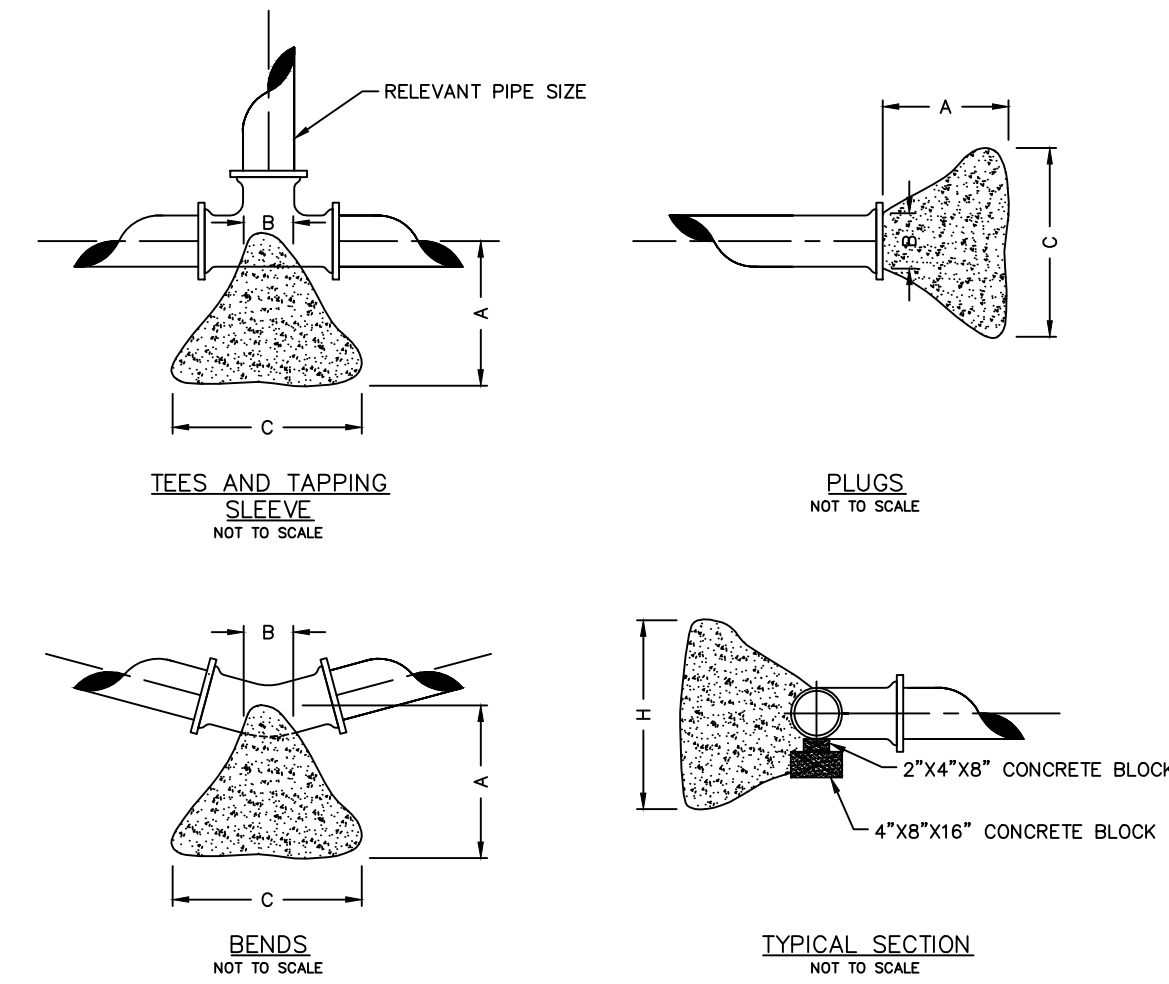


NOTE: THIS DETAIL IS FROM PWSD#2



THRUST BLOCK DIMENSIONS - INCHES

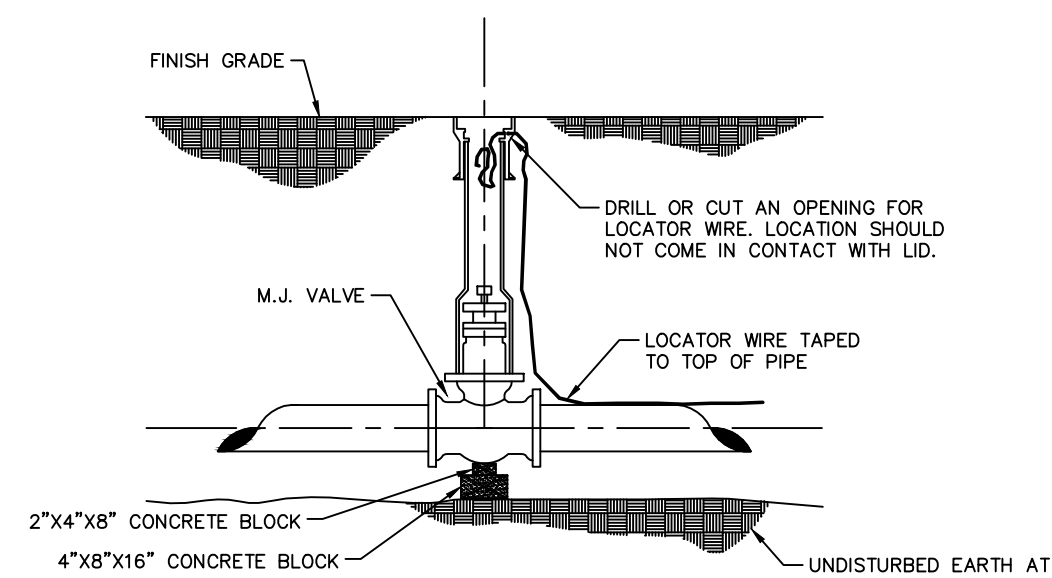
PIPE DIA.	ALL FTGS.		TEE PLUG TAPPING		90 DEGREE BEND		45 DEGREE BEND		22-1/2 BEND		11-1/4 BEND	
	A	B	C	H	C	H	C	H	C	H	C	H
4	14	4	24	12	26	15	18	12	12	12	12	12
6	16	6	36	18	36	24	30	18	24	12	18	12
8	20	8	36	30	42	36	36	24	24	18	18	12
10	20	10	48	36	66	36	36	36	28	24	18	18
12	24	12	68	36	82	42	52	36	40	24	28	18

NOTE
FOR FITTINGS LARGER THAN 12", SPECIAL RESTRAINT DESIGNS ARE REQUIRED.

HORIZONTAL THRUST BLOCKING
DETAIL "C"

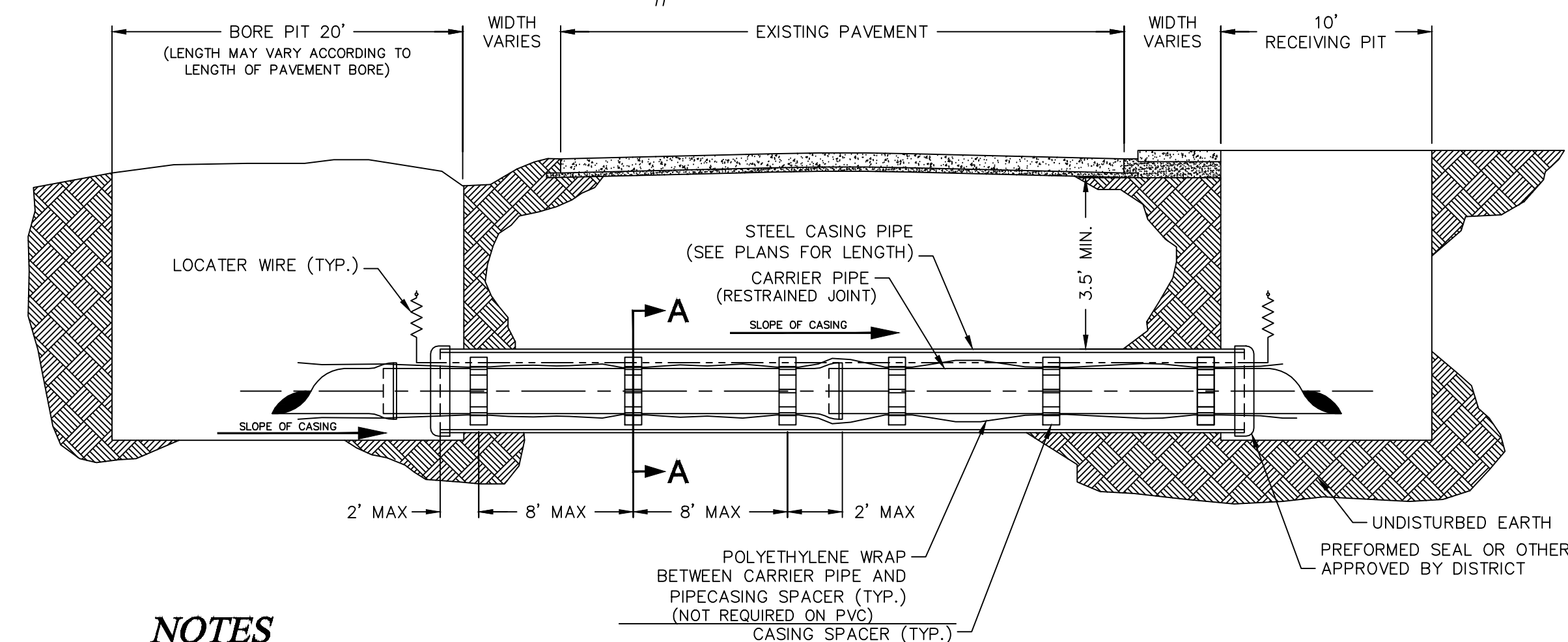
NOTE: THIS DETAIL IS FROM PWSD#2

Buffalo box is an acceptable product to use.
Tyler 562-S and 564-S are acceptable products.



GATE VALVE DETAIL
NOT TO SCALE
DETAIL "D"

NOTE: THIS DETAIL IS FROM PWSD#2



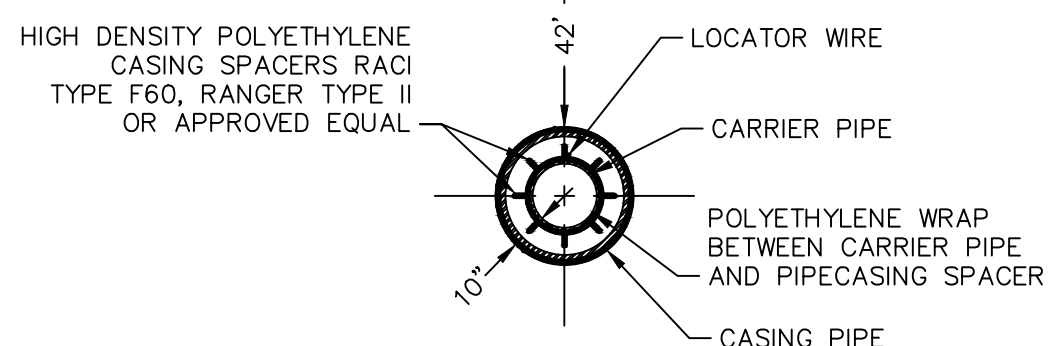
NOTES

- INSTALLATION OF THE CASING AND CARRIER PIPES SHALL MEET THE REQUIREMENTS OF PUBLIC WATER SUPPLY DISTRICT No. 2 OF ST. CHARLES COUNTY.
- CASING PIPES FOR ROAD AND HIGHWAY CROSSINGS SHALL BE WELDED STEEL PIPE WITH A MINIMUM WALL THICKNESS OF 1/4" NON-COATED AND SHALL HAVE A MINIMUM DIAMETER OF 10" LARGER THAN THE NOMINAL SIZE OF THE CARRIER PIPE.
- THE CARRIER PIPE SHALL BE RESTRAINED JOINT PIPE

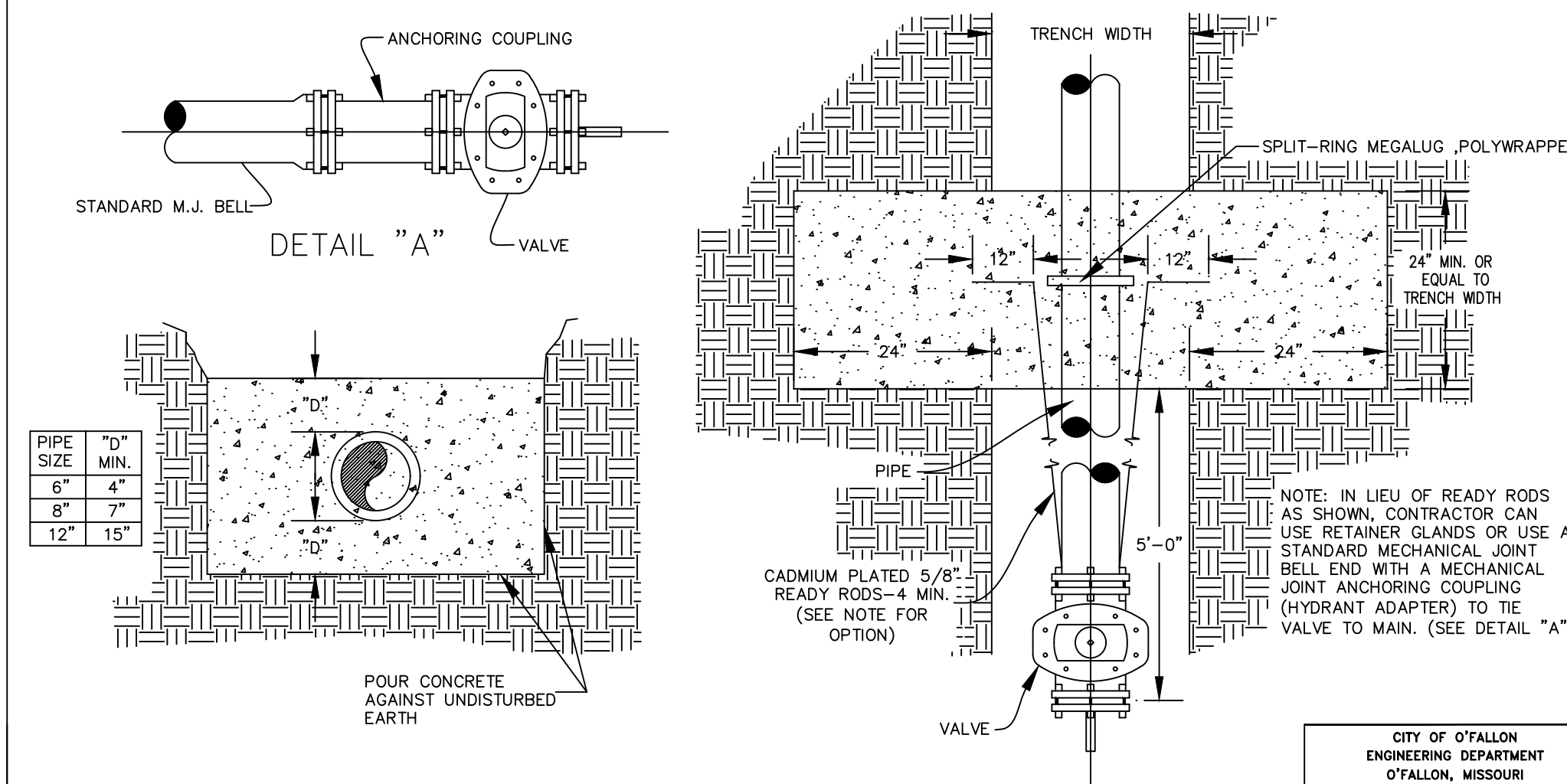
FOR SANITARY SEWER BORES, SEE THE MSD DETAIL

TYPICAL WATER BORE AND ENCASEMENT
DETAIL "H"

PLAN VIEW
NOT TO SCALE



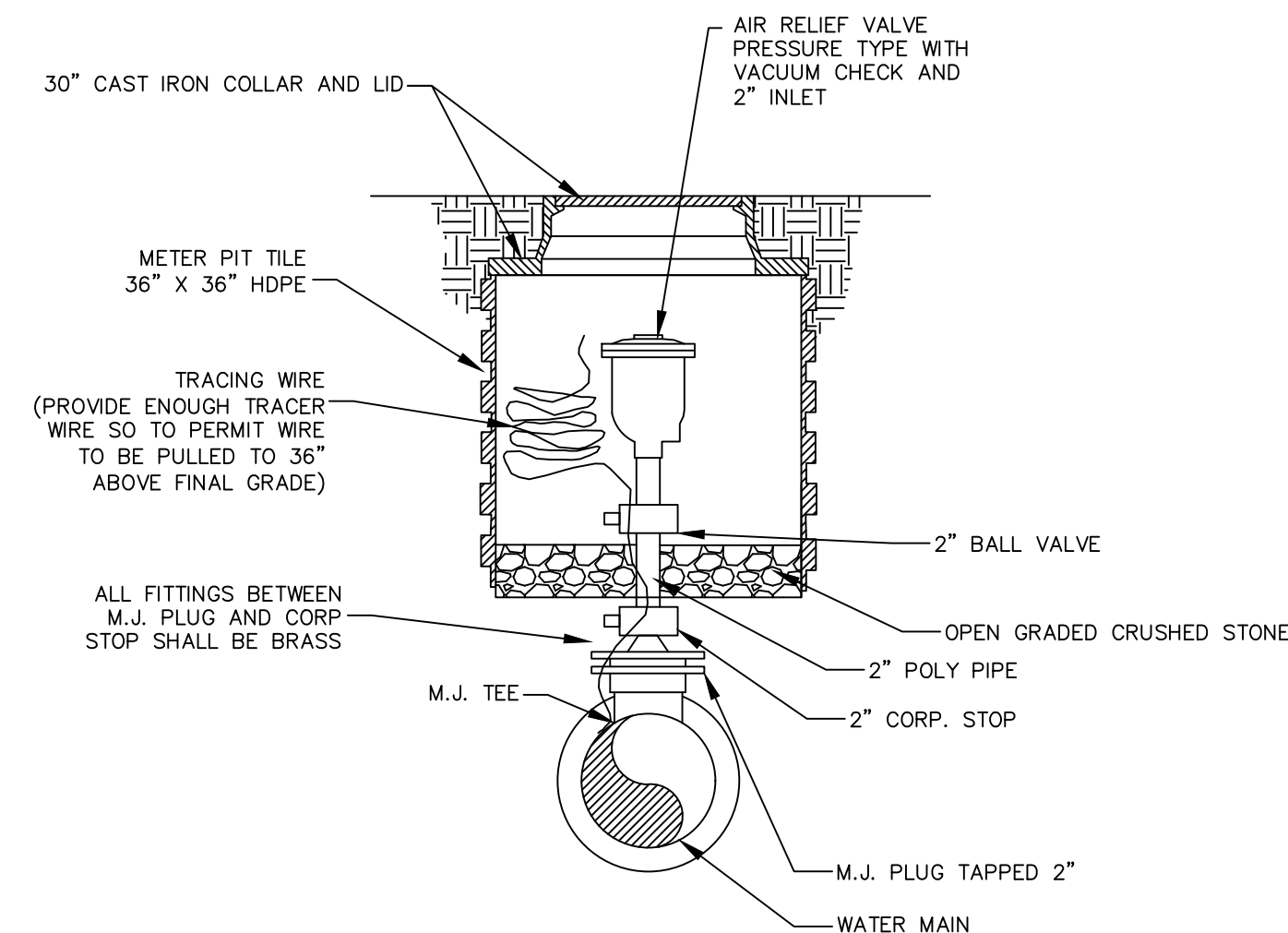
SECTION A-A
NOT TO SCALE



CROSS BLOCK DETAIL

NOT TO SCALE

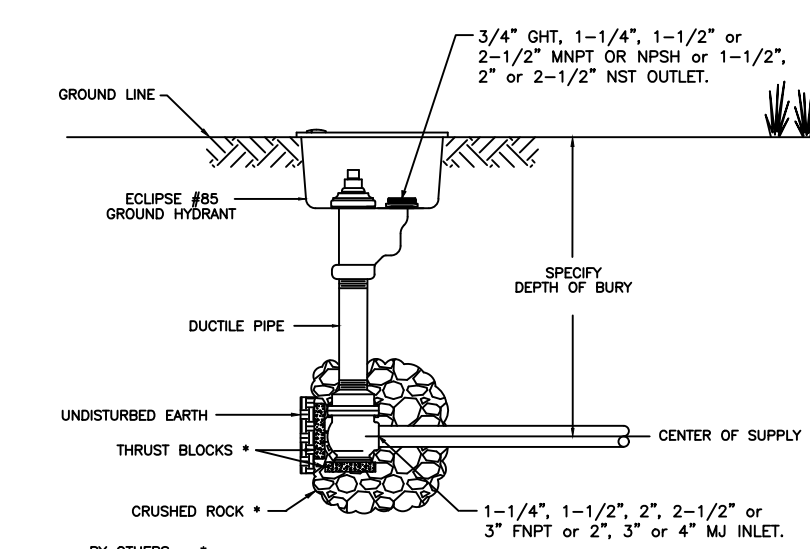
CROSS BLOCK DETAILS



AIR RELIEF ASSEMBLY

NOT TO SCALE

ECLIPSE NO. 85 GROUND HYDRANT



Ground Hydrants shall be self-draining, non-freezing, compression type with a 1-3/8" main opening, and operated with a T Handle operating handle. Inlet shall be (2", 2-1/2" & 3" FNPT, or 2", 3" or 4" M.J.). Outlet shall be (3/4" GHT or 1", 1-1/4", 1-1/2", 2" or 2-1/2" MNPT or 1-1/2", 2" or 2-1/2" NST).

Hydrants shall have a (ductile iron (STD), galvanized steel, stainless steel, or brass) exterior casing pipe, a galvanized (STD), stainless steel or brass) interior non-turning operating rod with a heavy wall (cast iron (STD), or brass) box and locking lid.

Principal interior operating parts shall be brass, bronze and aluminum and be removable for servicing without excavating the hydrant.

Ground Hydrants shall be set in 4 cubic feet of crushed stone to allow for proper drainage of the hydrant. Recommendations of the AWWA should followed when installing the hydrant.

Hydrants shall be Eclipse No. 85 Eclipse Blow-Off Hydrant as manufactured by John C. Kupperle Company, St. Louis, MO or approved equal.

BLOW-OFF DETAIL

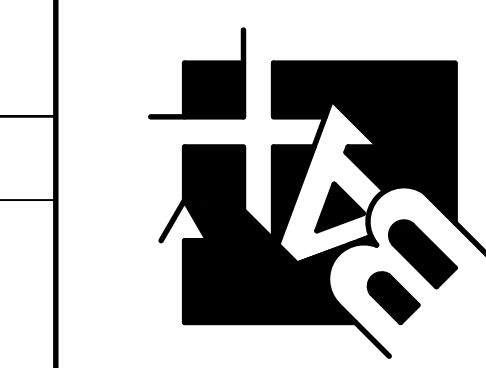
NO.	DATE	REVISION

THIS DRAWING IS THE PROPERTY OF THE KUPPERLE FOUNDRY COMPANY. IT IS NOT TO BE USED OR REPLICATED WITHOUT PERMISSION OF THE OWNER.

DRAWN: G.S.
APPROVED: [Signature]
DATE: 8-26-09
MATERIAL: [Blank]

PROJECT TITLE:
GRANT WAREHOUSE & STORAGE PHASE ONE

ENGINEERING PLANING SURVEYING
221 Point View Blvd
St. Charles, MO 63301
636-928-5562
FAX 636-928-1718



CITY OF T'ALLON
ENGINEERING DEPARTMENT
T'ALLON, MISSOURI

CROSS BLOCK DETAILS

REFERENCE DETAILS

REVISIONS

NO.	DATE	REVISION
10-15-19		CITY REVIEW
10-24-19		CITY REVIEW

Developer / Owner:
MJSM, L.L.C.
2209 DROSTE ROAD
ST. CHARLES, MO 63301
636-949-0680

P+Z No. #1407.06.01
City No. Approved April 6, 2017

Page No. 11 of 11

ENGINEERS SEAL DOES NOT APPLY TO DETAILS ON THIS SHEET

Site Address: 1300 & 1400 Grant Industrial Drive

Issue Date: 06/27/2017