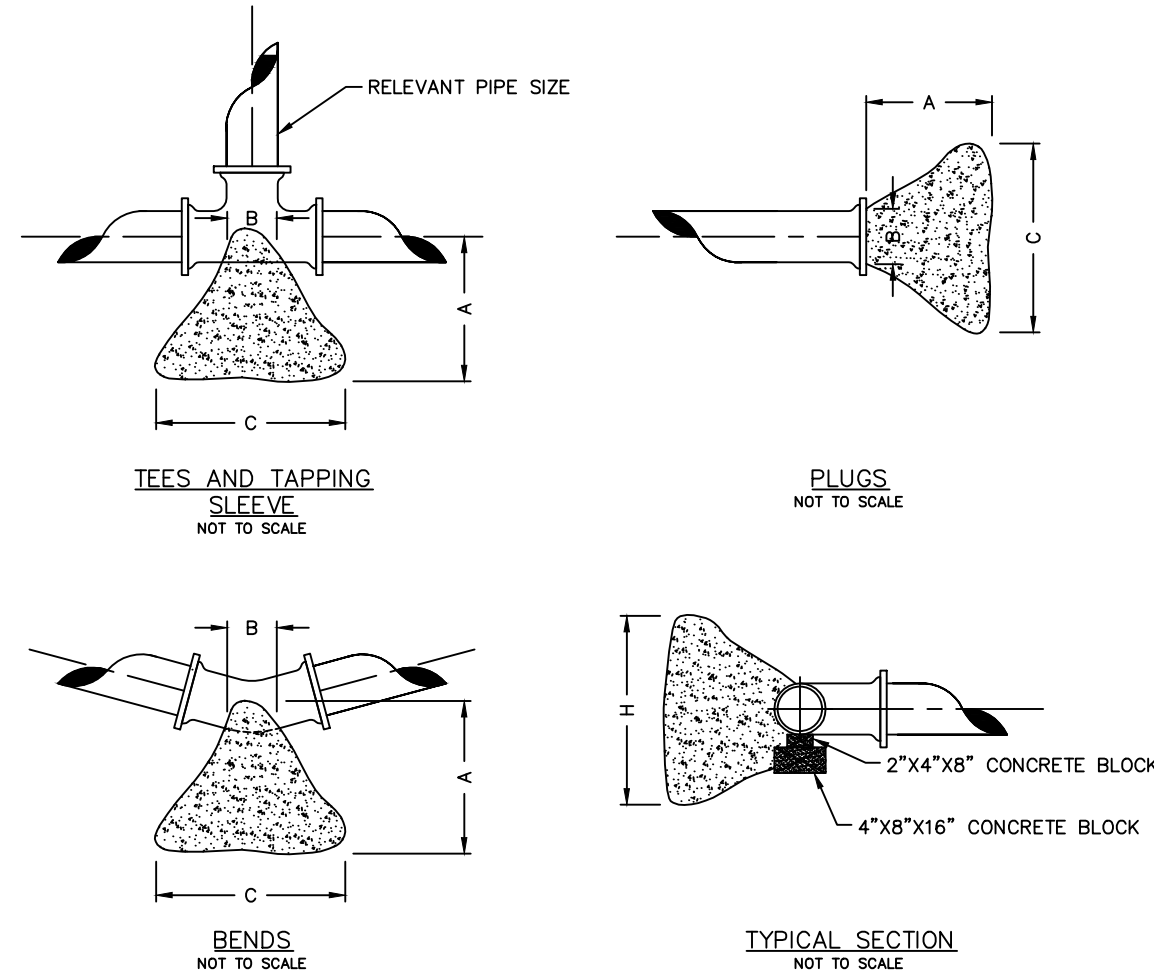


NOTE: THIS DETAIL IS FROM PWS#2



THRUST BLOCK DIMENSIONS - INCHES

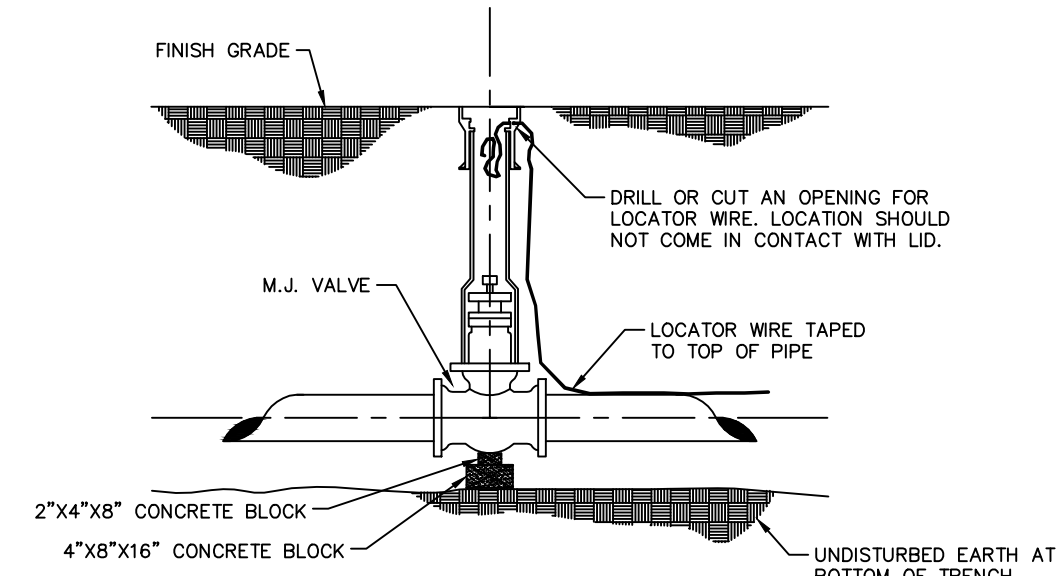
PIPE DIA.	ALL FTGS.			TEE PLUG TAPPING		90 DEGREE BEND		45 DEGREE BEND		22-1/2 BEND		11-1/4 BEND	
	A	B	C	H	C	H	C	H	C	H	C	H	
4	14	4	24	12	26	15	18	12	12	12	12	12	
6	16	6	36	18	36	24	30	18	24	12	12	12	
8	20	8	36	30	42	36	36	24	24	18	18	12	
10	20	10	48	36	66	36	36	36	28	24	18	18	
12	24	12	68	36	82	42	52	36	40	24	28	18	

NOTE
FOR FITTINGS LARGER THAN 12", SPECIAL RESTRAINT DESIGNS ARE REQUIRED.

HORIZONTAL THRUST BLOCKING
DETAIL "C"

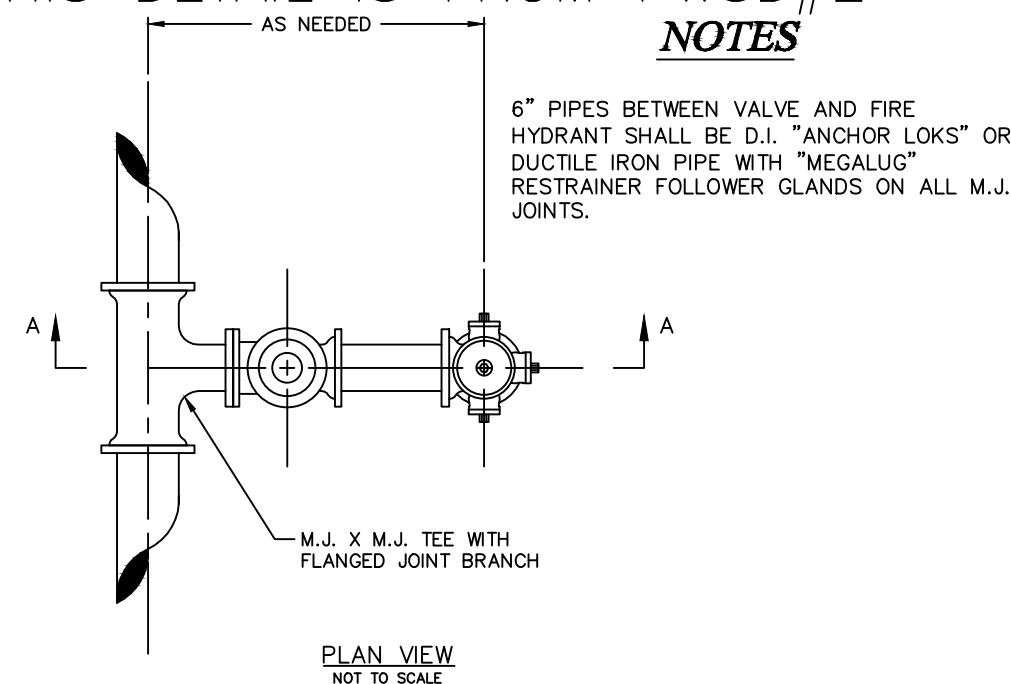
NOTE: THIS DETAIL IS FROM PWS#2

Buffalo box is an acceptable product to use.
Tyler 562-S and 564-S are acceptable products.

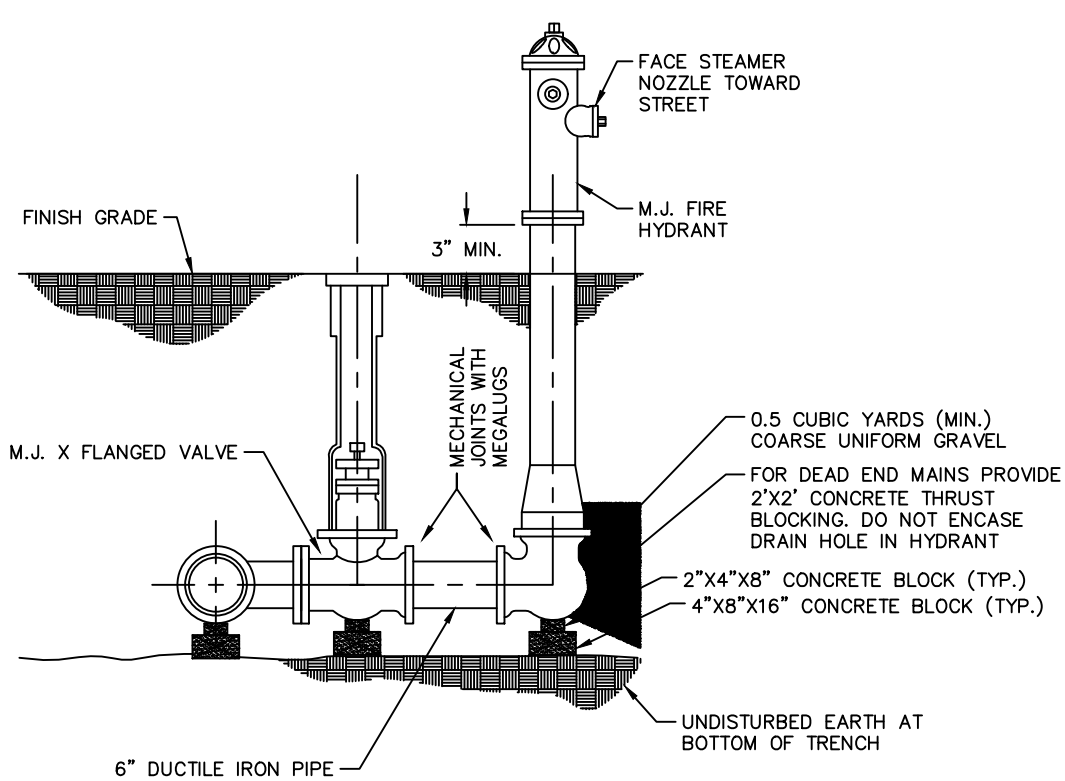


GATE VALVE DETAIL
NOT TO SCALE
DETAIL "D"

NOTE: THIS DETAIL IS FROM PWS#2



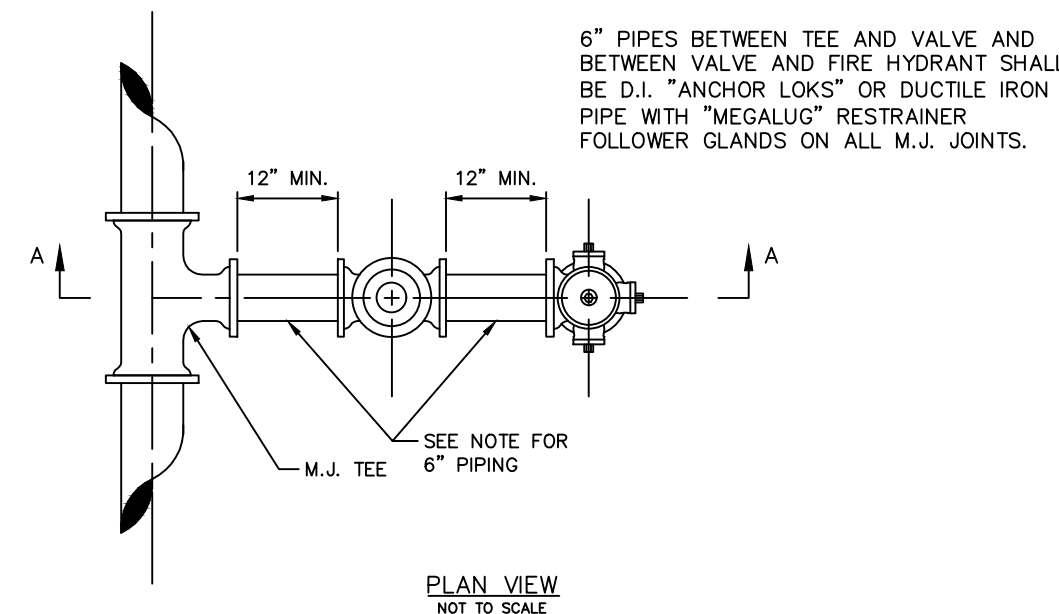
PLAN VIEW
NOT TO SCALE



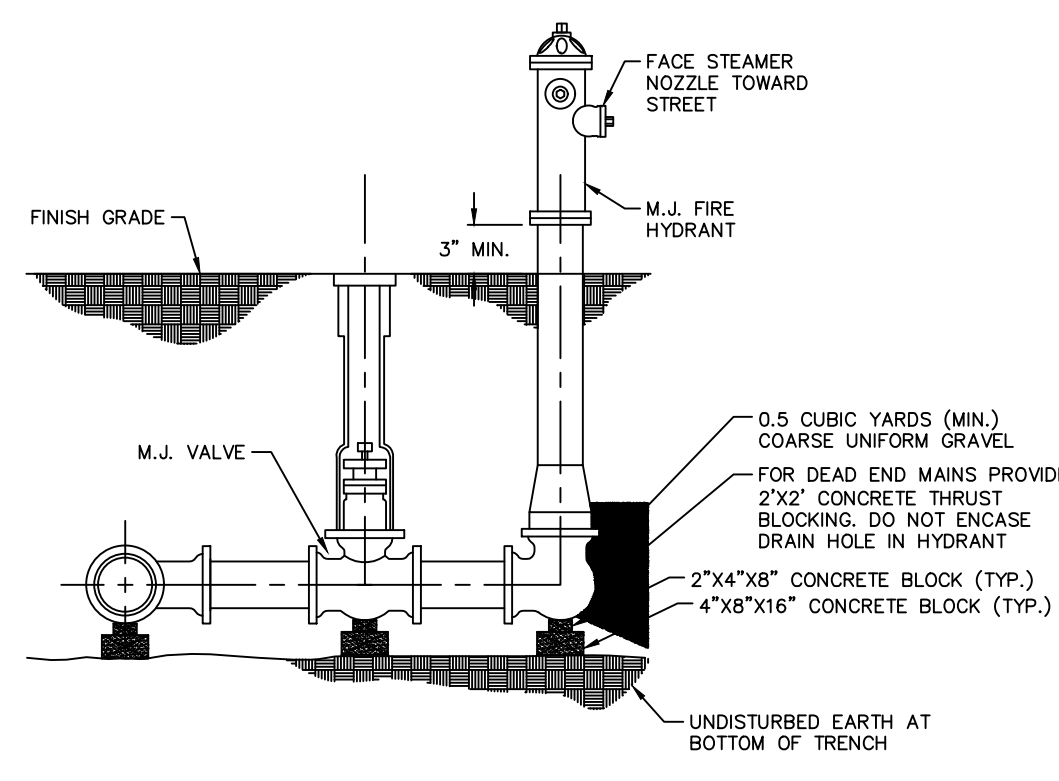
SECTION "A-A"
NOT TO SCALE

FIRE HYDRANT DETAIL
DETAIL "B"
PAGE 1 OF 3

NOTE: THIS DETAIL IS FROM PWS#2

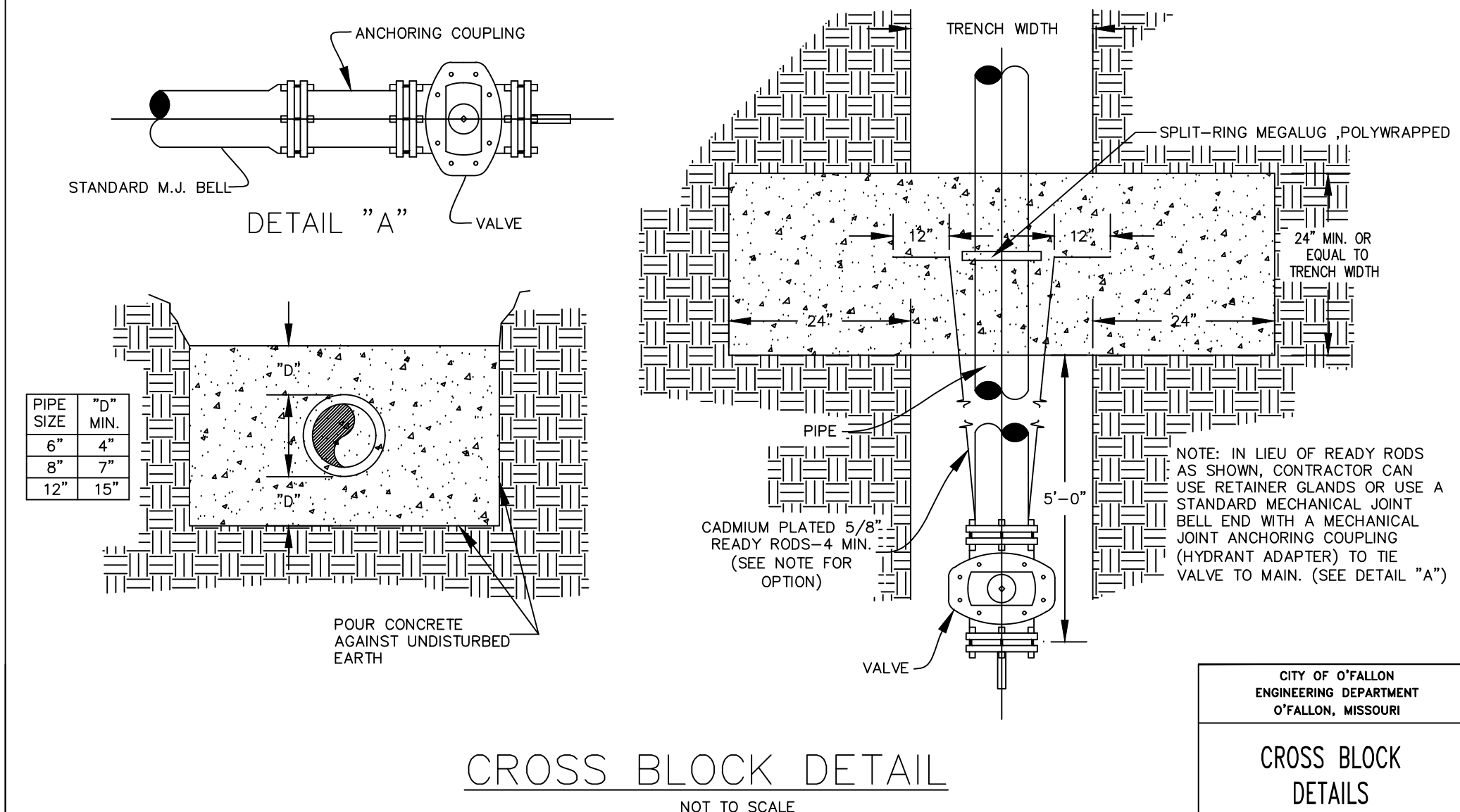


PLAN VIEW
NOT TO SCALE



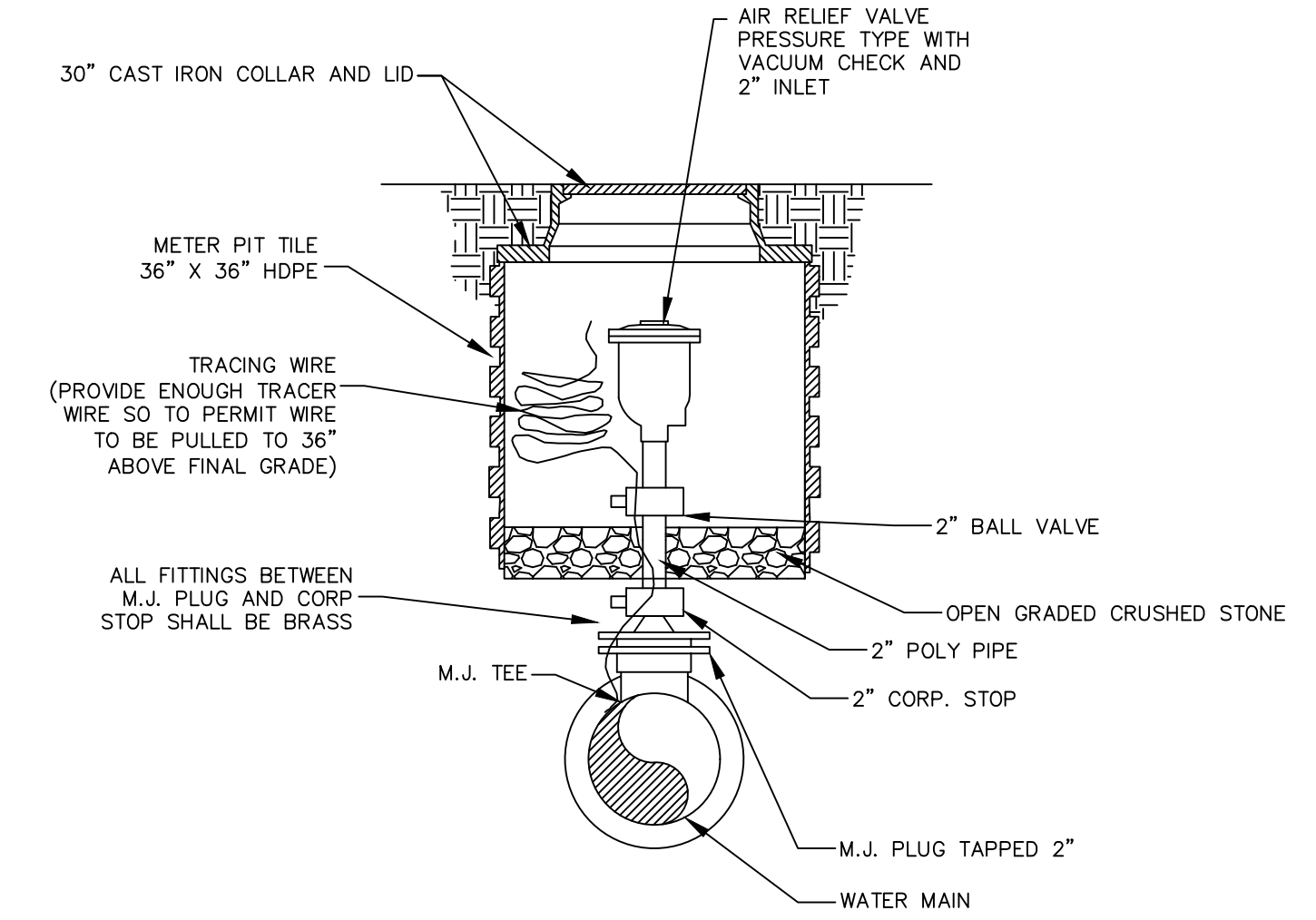
SECTION "A-A"
NOT TO SCALE

FIRE HYDRANT DETAIL
DETAIL "B"
PAGE 2 OF 3



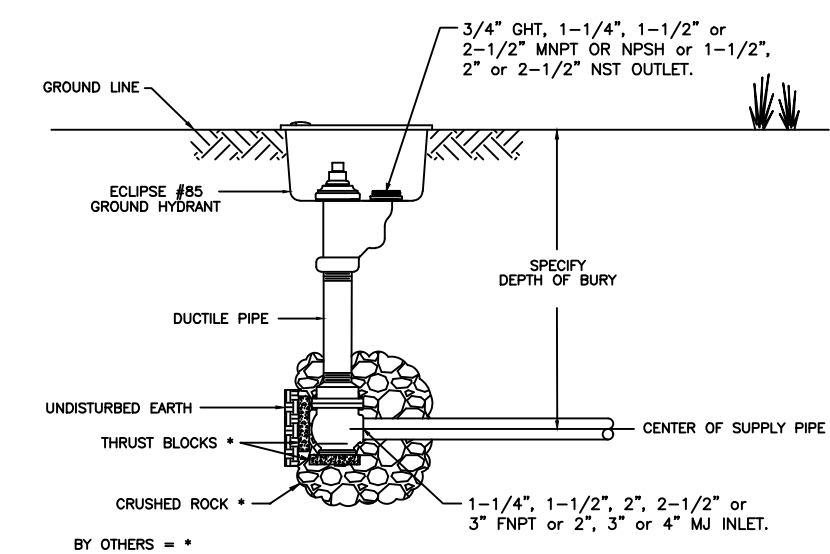
CROSS BLOCK DETAIL
NOT TO SCALE

CITY OF O'FALLON
ENGINEERING DEPARTMENT
O'FALLON, MISSOURI
CROSS BLOCK DETAILS



AIR RELIEF ASSEMBLY
NOT TO SCALE

ECLIPSE NO. 85 GROUND HYDRANT



Ground Hydrants shall be self-draining, non-freezing, compression type with a 1-3/8" main opening, and operated with a "T" handle operating handle. Inlet shall be (2", 2-1/2" & 3" FNPT, or 2", 3" or 4" Mj). Outlet shall be (3/4" GHT or 1", 1-1/4", 1-1/2", 2" or 2-1/2" MNPT or 1-1/2", 2" or 2-1/2" NST).

Hydrants shall have a (ductile iron (SDI), galvanized steel, stainless steel, or brass) exterior casing pipe, a galvanized (STD), stainless steel or brass) interior non-turning operating rod with a heavy wall (cast iron (SDI), or brass) box and locking lid.

Principal interior operating parts shall be brass, bronze and aluminum and be removable for servicing without excavating the hydrant.

Ground Hydrants shall be set in 4 cubic feet of crushed stone to allow for proper drainage of the hydrant. Recommendations of the AWWA should followed when installing the hydrant.

Hydrants shall be Eclipse No. 85 Eclipse Blow-Off Hydrant as manufactured by John C. Kupferle Company, St. Louis, MO or approved equal.

BLOW-OFF DETAIL

NO.	DATE	REVISION

THIS DRAWING IS THE PROPERTY OF THE KUPFERLE COMPANY. IT IS NOT TO BE USED OR REPRODUCED WITHOUT PERMISSION OF THE OWNER.

DATE: 8-25-09
MATERIAL: MATL

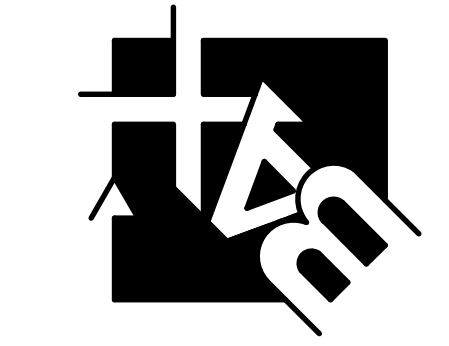
DRAWN: GB
APPROVED: [Signature]

KUPFERLE COMPANY
211 NORTH 5TH STREET, ST. LOUIS, MO 63102
314-281-8738 800-231-3960 FAX 314-215-2820
http://www.kupferle.com

PART NO. 85 BLOW-OFF HYDRANT SCALE TO FIT

PROJECT TITLE:
PROGRESS WEST LOT 2

ENGINEERING
PLANNING
SURVEYING
221 Point View Blvd.
St. Charles, MO 63301
636-928-5562
FAX 928-1718



DISCLAIMER OF RESPONSIBILITY
I hereby specify that the documents intended to be authorized by my seal are limited to this sheet, and I hereby disclaim any responsibility for all other drawings, specifications, estimates, reports or other documents or instruments relating to or intended to be used for any part or parts of the architectural or engineering project or survey other than those authorized by my seal.

REFERENCE ONLY

REVISIONS

NO.	DATE	CITY COMMENTS
05-19-22		CITY COMMENTS
06-10-22		CITY COMMENTS
06-30-22		CITY COMMENTS

Developer / Owner:
Davis Family Trust
2209 Droste Rd.
St. Charles, MO 63301

P+Z No. #21-009309
Approval Date: 11/04/21
City No. #
Page No.

C11

ENGINEERS SEAL DOES NOT APPLY TO CITY OF O'FALLON DETAILS ON THIS SHEET.

Issue Date: 03/16/2022

DETAILS