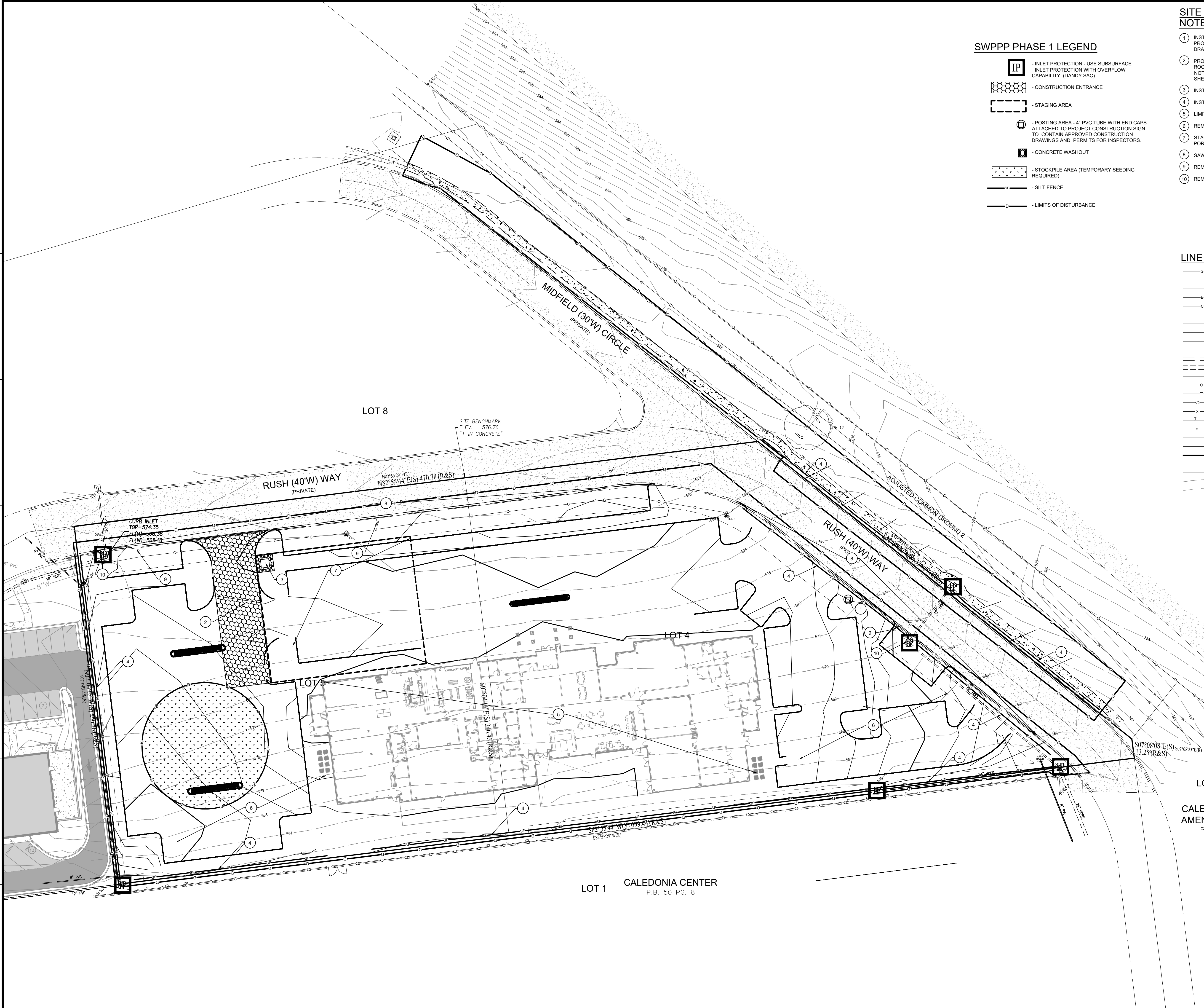


LOCATION: C:\2023\W230784 - ST\Engineering\Design\Drawings\W230784S1-C101.mxd  
DATE/TIME: December 31, 2024 - 4:56pm  
PLOTTER: B1: Settings



SWPPP PHASE 1 LEGEND

- INLET PROTECTION - USE SUBSURFACE INLET PROTECTION WITH OVERFLOW CAPABILITY (DANDY SAC)
- CONSTRUCTION ENTRANCE
- STAGING AREA
- POSTING AREA - 4" PVC TUBE WITH END CAPS ATTACHED TO PROJECT CONSTRUCTION SIGN TO CONTAIN APPROVED CONSTRUCTION DRAWINGS AND PERMITS FOR INSPECTORS.
- CONCRETE WASHOUT
- STOCKPILE AREA (TEMPORARY SEEDING REQUIRED)
- SILT FENCE
- LIMITS OF DISTURBANCE

SITE PREPARATION / SWPPP PHASE 1 NOTES

1. INSTALL PERMIT POSTING AREA. 4" PVC TUBE WITH END CAPS ATTACHED TO PROJECT CONSTRUCTION SIGN TO CONTAIN APPROVED CONSTRUCTION DRAWINGS AND PERMITS FOR INSPECTORS.
2. PROVIDE A 30" WIDE X 50' LONG AGGREGATE WASH OFF AREA USING 2" CLEAN ROCK, APPROXIMATELY 6" DEEP FOR USE DURING CONSTRUCTION. IF WATER IS NOT AVAILABLE, A WATER TRUCK WILL BE PROVIDED. REFER TO DETAIL ON SHEET C104
3. INSTALL CONCRETE WASHOUT. REFER TO DETAIL ON SHEET C104
4. INSTALL SILT FENCE. REFER TO DETAIL ON SHEET C104
5. LIMITS OF PROPOSED BUILDING
6. REMOVE EXISTING TREE(S) AND VEGETATION
7. STAGING AREA. PROVIDE CONSTRUCTION DUMPSTER, FUELING AREA, AND PORT-O-LET AS NEEDED.
8. SAW CUT AND REMOVE EXISTING CURB
9. REMOVE EXISTING SIGN(S)
10. REMOVE AND REPLACE EXISTING STRUCTURE CASTING

LINE TYPES

G	—	G	UNDERGROUND GAS
W	—	W	UNDERGROUND WATER
E(A)	—	E(A)	AERIAL ELECTRIC
E	—	E	UNDERGROUND ELECTRIC
C	—	C	UNDERGROUND COMMUNICATIONS
C(A)	—	C(A)	AERIAL COMMUNICATIONS
FO	—	FO	UNDERGROUND FIBER OPTIC
FO(A)	—	FO(A)	AERIAL FIBER OPTIC CABLE
OHJ	—	OHJ	OVERHEAD UTILITY
FM	—	FM	FORCE MAIN
—	—	—	SANITARY SEWER
—	—	—	STORM SEWER
—	—	—	RIGHT OF WAY LINE
—	—	—	CHAIN LINK FENCE
—	—	—	BOARD FENCE
—	—	—	WROUGHT IRON FENCE
X	—	X	FARM FENCE
T	—	T	GUARD RAIL
*	—	*	HAND RAIL
SF	—	SF	SILT FENCE
—	—	—	BUILDING SETBACK LINE
—	—	—	BOUNDARY LINE
—	—	—	FLOW LINE
—	—	—	SECTION LINE
—	—	—	INDEX CONTOUR
—	—	—	INTERMEDIATE CONTOUR

BENCHMARK INFORMATION

PROJECT BM  
NGS CORRS STATION "MOOP" ELEVATION = 496.94 (NAVD 88) OBSERVED  
NAVD88 ELEVATIONS WERE DERIVED FROM GPS OBSERVATIONS USING THE MISSOURI DEPARTMENT OF TRANSPORTATION VRS NETWORK FROM BASE STATION "MOOP" USING TRIMBLE REAL-TIME KINEMATIC GPS HARDWARE TAKEN ON FEBRUARY 12, 2024.

SITE BM

ELEVATION = 576.76 (NAVD 88)  
"CROSS IN CONCRETE" FOUND IN THE CENTER OF RUSH WAY, APPROXIMATELY 96 FEET NORTHEAST OF ITS INTERSECTION WITH THE CENTERLINE OF MIDFIELD CIRCLE, 34 FEET NORTH OF A STORM MANHOLE, 56 FEET NORTHWEST OF A CURB INLET AND 56 FEET SOUTHWEST OF ANOTHER CURB INLET. LOCATION SHOWN HEREON.

CONTACT PERSON FOR EROSION CONTROL & SEDIMENT PRACTICES

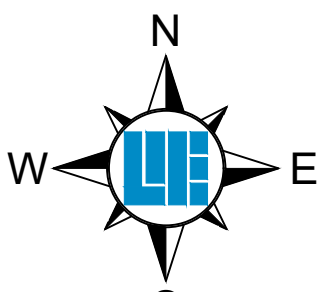
WEIHE ENGINEERS, INC.  
10505 N. COLLEGE AVE.  
INDIANAPOLIS, IN 46268  
TELEPHONE: (317) 846-6611  
FAX: (317) 845-0546  
EMAIL: PARKERF@WEIHE.NET  
CONTACT PERSON: FRED PARKER, CPESC

CITY NOTES:

- IF MATERIALS SUCH AS TREES, ORGANIC DEBRIS, RUBBLE, FOUNDATIONS AND OTHER DELETERIOUS MATERIAL ARE NOT TO BE REUSED, THEY SHALL BE REMOVED FROM THE SITE AND DISPOSED OF IN COMPLIANCE WITH ALL APPLICABLE LAWS AND REGULATIONS.

EXISTING AREAS

TOTAL SITE = 3.35± AC.  
DISTURBED = 3.40± AC.  
PERVIOUS = 2.84± AC.  
IMPERVIOUS = 0.51± AC.



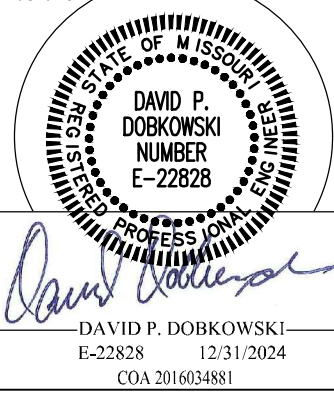
Within Missouri Call  
811 or 800-344-7483  
24 Hours a Day, 7 Days a Week

PER MISSOURI STATE LAW ADVANCE NOTICE: 2 WORKING DAYS (MISSOURI REVISED STATUTES, CHAPTER 316, GENERAL SAFETY REQUIREMENTS - SECTIONS 316.010 THROUGH 316.020) SHALL BE KNOWN AS THE "UNDERGROUND FACILITY SAFETY AND DAMAGE PREVENTION ACT"

10505 N. College Avenue  
Indianapolis, Indiana 46280  
weihe.net  
317 | 846 - 6611  
800 | 452 - 6408  
317 | 843 - 0546 fax

**WEIHE ENGINEERS**  
Land Surveying | Civil Engineering  
Landscape Architecture  
*Build with confidence.*

REVISIONS AND ISSUES	DATE	BY	PROJECT NO.
ISSUED FOR CLIENT REVIEW	06/13/2024	DD	W23.0784
ISSUED FOR CITY OF OFALLON COMMENTS	08/28/2024	DD	W23.0784
ISSUED FOR CITY OF OFALLON COMMENTS	10/18/2024	DD	W23.0784



PREPARED FOR: **HOTEL - CALEDONIA**  
LOT 4 AND 5, CALEDONIA CENTER, OFALLON, MO  
63368  
**STORMWATER POLLUTION PREVENTION PLAN PHASE I**  
PART OF SECTION 13, TOWNSHIP 46 NORTH, RANGE 2 EAST, ST. CHARLES COUNTY, MO  
SHEET NO. **C101**  
PROJECT NO. **W23.0784**