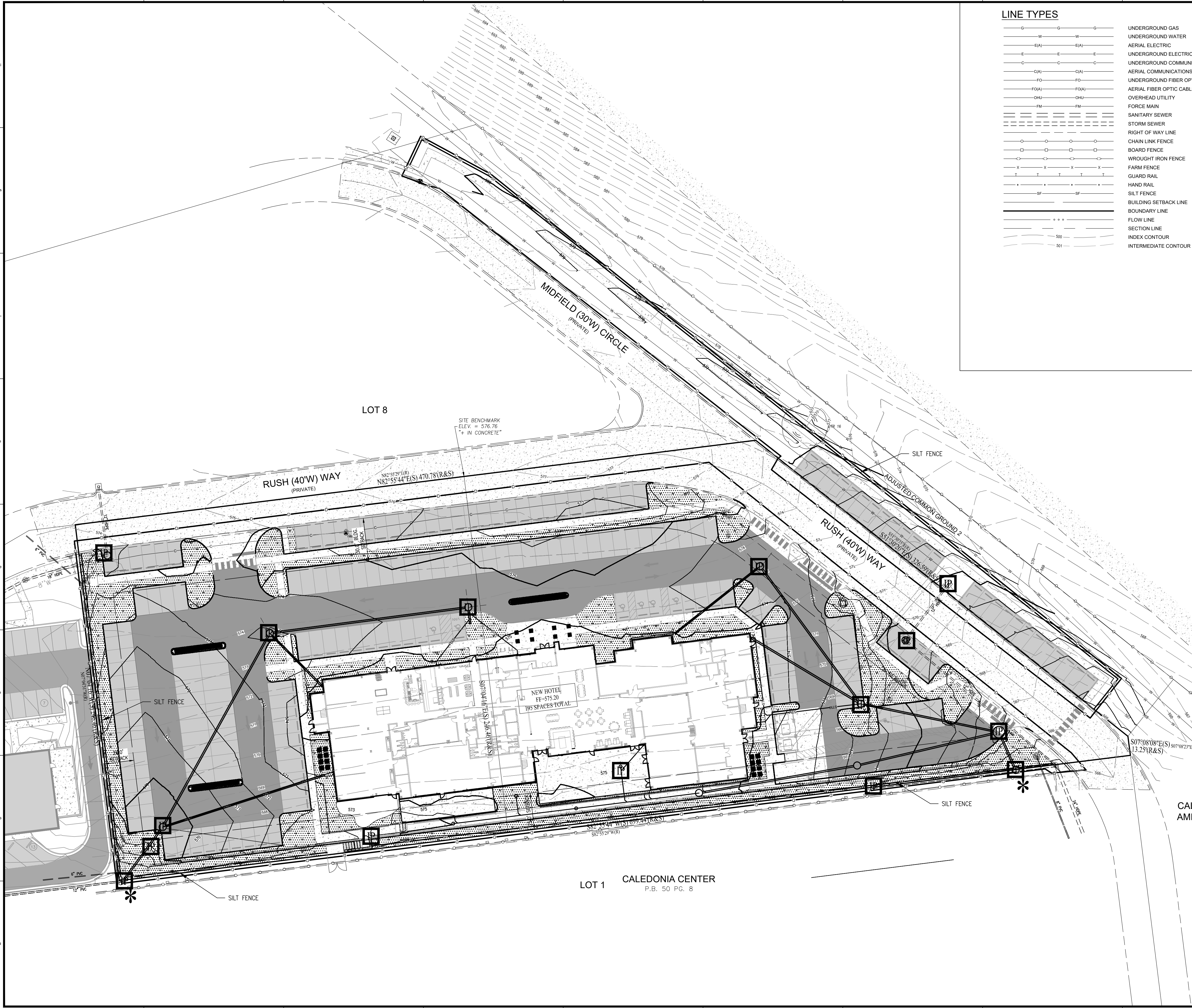
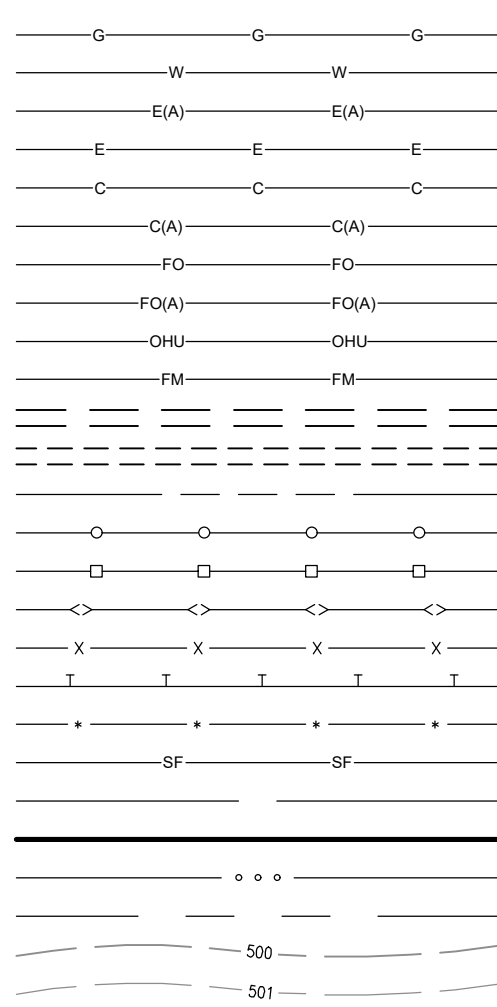


LOCATION: C:\2023\W230784 - ST\Engineering\Design\Drawings\W230784-1-C102.mxd  
DATE/TIME: December 31, 2024 4:57pm  
PLOTTER: B1: Sonnetry



LINE TYPES



UNDERGROUND GAS  
UNDERGROUND WATER  
AERIAL ELECTRIC  
UNDERGROUND ELECTRIC  
UNDERGROUND COMMUNICATIONS  
AERIAL COMMUNICATIONS  
UNDERGROUND FIBER OPTIC  
AERIAL FIBER OPTIC CABLE  
OVERHEAD UTILITY  
FORCE MAIN  
SANITARY SEWER  
STORM SEWER  
RIGHT OF WAY LINE  
CHAIN LINK FENCE  
BOARD FENCE  
WROUGHT IRON FENCE  
FARM FENCE  
GUARD RAIL  
HAND RAIL  
SILT FENCE  
BUILDING SETBACK LINE  
BOUNDARY LINE  
FLOW LINE  
SECTION LINE  
INDEX CONTOUR  
INTERMEDIATE CONTOUR

CONTACT PERSON FOR EROSION CONTROL & SEDIMENT PRACTICES

WEIHE ENGINEERS, INC.  
10505 N. COLLEGE AVE.  
INDIANAPOLIS, IN 46268  
TELEPHONE: (317) 846-6611  
FAX: (317) 843-0546  
EMAIL: PARKERF@WEIHE.NET  
CONTACT PERSON: FRED PARKER, CPESC

-WARNING-

THIS PLAN TO BE USED FOR EROSION CONTROL PURPOSES ONLY. ADDITIONAL EROSION CONTROL MEASURES MAY BE REQUIRED IN THE FIELD BY THE INSPECTOR.

-NOTE-

THIS PLAN INDICATES EROSION CONTROL MEASURES REQUIRED AFTER SOIL STRIPPING AND PAD BUILDING HAS TAKEN PLACE. COORDINATE WITH DEVELOPER FOR MEASURES REQUIRED UNTIL PROPERTY TURNED OVER FOR DEVELOPMENT. COORDINATE WITH SOIL CONSERVATION DISTRICT REPRESENTATIVE FOR ANY OTHER MEASURES REQUIRED DUE TO SITE CONDITIONS.

F.I.R.M. PANEL #29183C0410G, DATED 01/20/2016 FLOOD ZONE "X"

EXISTING AREAS

HOTEL SITE = 3.35± AC.  
(LIMITS OF CONSTRUCTION)

DISTURBED = 3.40± AC.

EXISTING IMPERVIOUS = 0.51± AC.  
EXISTING PERVIOUS = 2.84± AC.

PROPOSED IMPERVIOUS = 2.75± AC.  
PROPOSED PERVIOUS = 0.60± AC

SWPPP PHASE 2 LEGEND

- INLET PROTECTION - USE SUBSURFACE INLET PROTECTION WITH OVERFLOW CAPABILITY (DANDY SAC)
- PERMANENT/TEMPORARY SEEDING USE PLANTING CHART
- SILT FENCE
- LIMITS OF DISTURBANCE (CONSTRUCTION LIMITS)
- SITE DISCHARGE POINT

BENCHMARK INFORMATION

PROJECT BM

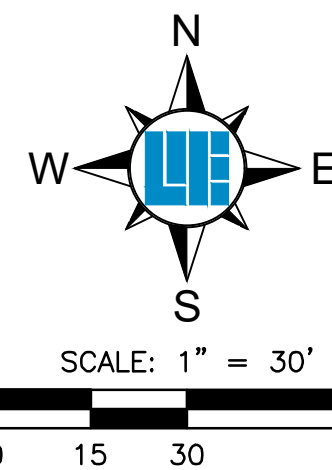
NGS CORRS STATION "MOOP" ELEVATION = 496.94 (NAVD 88) OBSERVED  
NAVD88 ELEVATIONS WERE DERIVED FROM GPS OBSERVATIONS USING THE MISSOURI DEPARTMENT OF TRANSPORTATION VRS NETWORK FROM BASE STATION "MOOP" USING TRIMBLE REAL-TIME KINEMATIC GPS HARDWARE TAKEN ON FEBRUARY 12, 2024.

SITE BM

ELEVATION = 576.76 (NAVD 88)  
"CROSS IN CONCRETE" FOUND IN THE CENTER OF RUSH WAY, APPROXIMATELY 96 FEET NORTHEAST OF ITS INTERSECTION WITH THE CENTERLINE OF MIDFIELD CIRCLE. 34 FEET NORTH OF A STORM MANHOLE, 56 FEET NORTHWEST OF A CURB INLET AND 56 FEET SOUTHWEST OF ANOTHER CURB INLET. LOCATION SHOWN HEREON.

LAND DESCRIPTION

PARCEL 1:  
LOT 5 OF CALEDONIA CENTER AMENDED PLAT, A SUBDIVISION IN ST. CHARLES COUNTY, MISSOURI ACCORDING TO THE PLAT THEREOF RECORDED IN PLAT BOOK 50 PAGE 371.  
PARCEL 2:  
LOT 4 OF CALEDONIA CENTER AMENDED PLAT, A SUBDIVISION IN ST. CHARLES COUNTY, MISSOURI ACCORDING TO THE PLAT THEREOF RECORDED IN PLAT BOOK 50 PAGE 371.

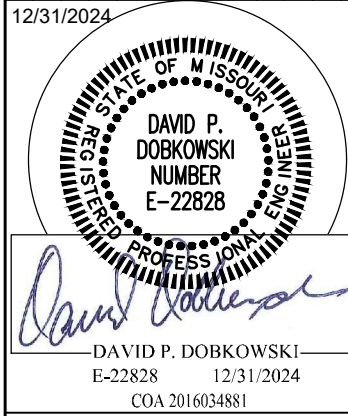


Within Missouri Call  
811 or 800-344-7483  
24 Hours a Day, 7 Days a Week

PER MISSOURI STATE LAW ADVANCE NOTICE: 2 WORKING DAYS (MISSOURI REVISED STATUTES, CHAPTER 319, GENERAL SAFETY REQUIREMENTS - SECTIONS 319.010 THROUGH 319.020 SHALL BE KNOWN AS THE "UNDERGROUND FACILITY SAFETY AND DAMAGE PREVENTION ACT")

REVISIONS AND ISSUES	DATE	BY	PROJECT NO.
ISSUED FOR CLIENT REVIEW	06/13/2024	DD	W23.0784
ISSUED FOR CITY OF OFALLON COMMENTS	08/28/2024	DD	
ISSUED FOR CITY OF OFALLON COMMENTS	10/18/2024	DD	

DESIGNED BY:	BS
DRAWN BY:	JS
CHECKED BY:	DD
DATE:	09/28/2024



PREPARED FOR:  
**HOTEL - CALEDONIA**  
LOT 4 AND 5, CALEDONIA CENTER, OFALLON, MO  
63368  
**STORMWATER POLLUTION PREVENTION PLAN PHASE II**  
PART OF SECTION 13, TOWNSHIP 8 NORTH, RANGE 2 EAST, ST. CHARLES COUNTY, MO  
SHEET NO.  
**C102**  
PROJECT NO.  
W23.0784

**WEIHE ENGINEERS**  
Land Surveying | Civil Engineering  
Landscape Architecture  
*Build with confidence.*

10505 N. College Avenue  
Indianapolis, Indiana 46260  
weihe.net  
317 | 846 - 6611  
800 | 452 - 6408  
317 | 843 - 0546 fax  
ALLAN H. WEIHE, P.E., L.S. - FOUNDER