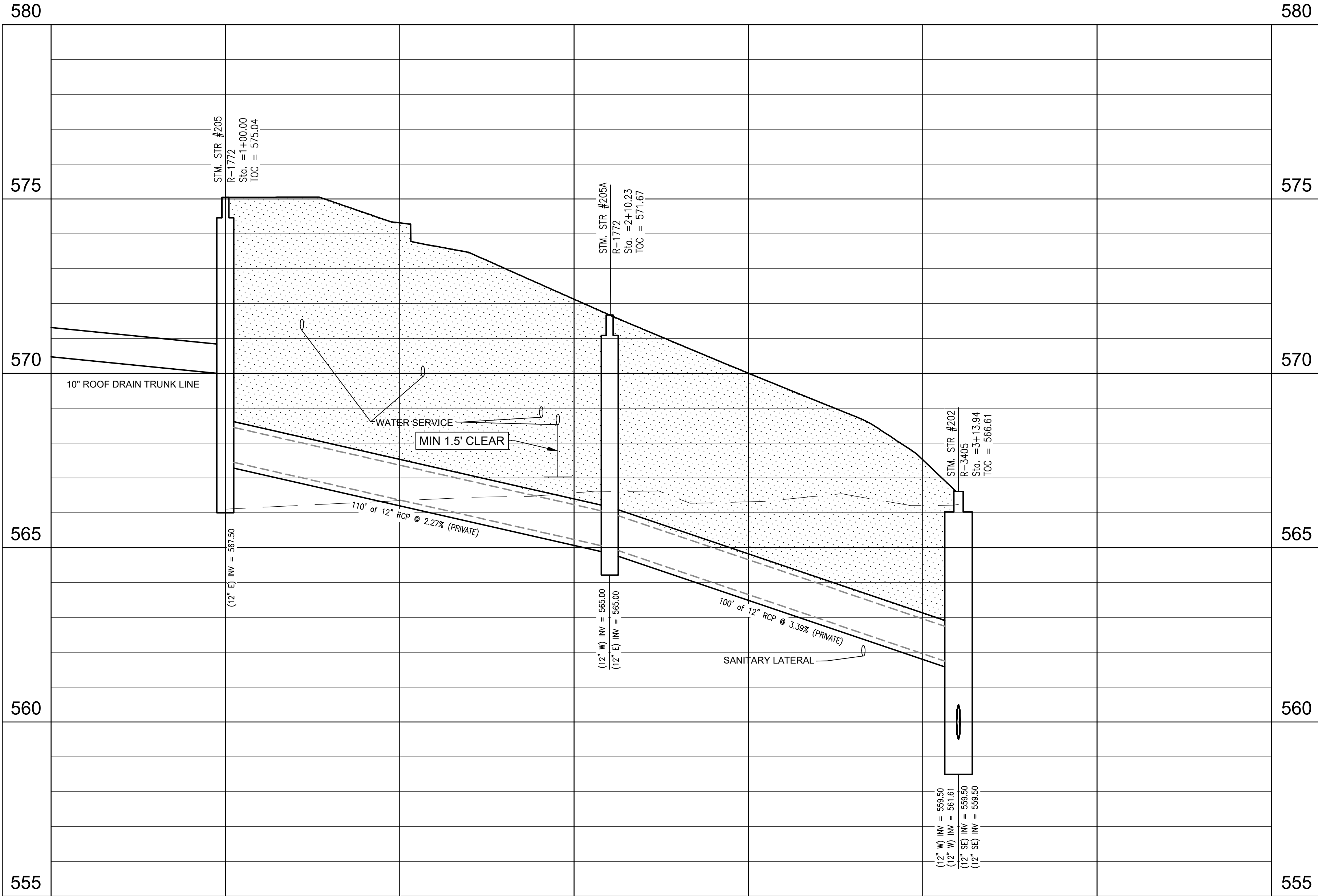


LOCATION: C:\2023\W230784 - ST\Engineering\dwg\storm\W230784ST-C600 storm prep.dwg to repl.dwg  
DATE/TIME: December 31, 2024 4:16pm  
PLOTTER: B1: Sentary

# Storm 205-202



HORIZONTAL SCALE: 1"=20'  
VERTICAL SCALE: 1"=2'

## STORM SEWER PLAN AND PROFILE LEGEND

### UTILITIES

- CISTERN
- DRINKING FOUNTAIN
- FIRE DEPT HOOKUP
- FIRE HYDRANT
- POST INDICATOR VALVE
- CHILLED WATER MANHOLE
- WATER MANHOLE
- SPRINKLER CONTROL BOX
- SPRINKLER CONTROL VALVE
- SPRINKLER
- SPIGOT
- WELL HEAD
- WATER METER
- WATER VALVE
- GAS METER
- GAS VALVE
- ELECTRIC MANHOLE
- ELECTRIC OUTLET
- ELECTRIC METER
- ELECTRIC RISER
- TRANSFORMER
- GUY ANCHOR
- ELECTRIC JUNCTION BOX
- GENERATOR
- UTILITY POLE
- UTILITY POLE W/ TRANSFORMER
- MONITORING WELL
- LIQUID PROPANE GAS TANK
- ORNAMENTAL LIGHT
- STREET LIGHT
- PARKING LOT LIGHT (1 HEAD)
- PARKING LOT LIGHT (2 HEAD)
- PARKING LOT LIGHT (3 HEAD)
- PARKING LOT LIGHT (4 HEAD)
- COMMUNICATIONS JUNCTION BOX
- COMMUNICATIONS MANHOLE
- COMMUNICATIONS PEDESTAL
- COMMUNICATIONS RISER
- TRAFFIC SIGNAL POLE
- TRAFFIC SIGNAL
- STORM CLEANOUT
- BEEHIVE INLET
- CURB INLET
- FLOOR DRAIN
- SQUARE INLET
- STORM MANHOLE
- ROUND INLET
- DOWN SPOUT
- SANITARY SEWER CLEANOUT
- LIFT STATION
- SANITARY SEWER MANHOLE
- SANITARY STUB MARKER
- SEPTIC TANK
- DISTRIBUTION BOX

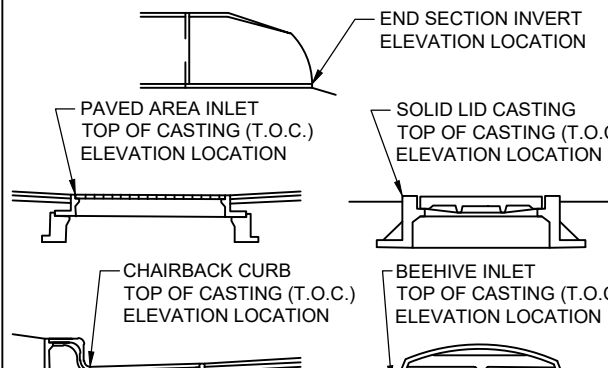
### OTHER

- FLAG POLE
- SIGN
- POST
- GATE POST
- BOLLARD
- PARKING METER
- PARKING WHEEL STOP
- ACCESSIBLE SPACE
- EMERGENCY FLOOD ROUTE
- FLOW DIRECTION AND SLOPE

### ABBREVIATIONS

ROW	RIGHT OF WAY
ESMT	EASEMENT
D.A.U.E.	DRAINAGE AND UTILITY EASEMENT
FFE	FINISH FLOOR ELEVATION
CMP	CORRUGATED METAL PIPE
RCP	REINFORCED CONCRETE PIPE
PVC	POLYVINYL CHLORIDE PIPE
VCP	VITRIFIED CLAY PIPE
HDPE	HIGH DENSITY POLYETHYLENE PIPE
DIP	DUCTILE IRON PIPE
SSD	SUB SURFACE DRAIN PIPE
STM	STORM
SAN	SANITARY
STR	STRUCTURE
CO	CLEANOUT

LEGEND	
	EXISTING GRADE
	FINISHED GRADE
	GRANULAR BACKFILL



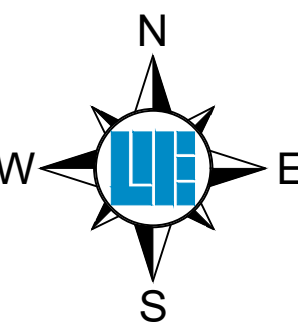
## STORM STRUCTURE T.O.C. ELEVATION LOCATION

## STORM SEWER NOTES

- THE CONTRACTOR SHALL ADHERE TO ALL TERMS AND CONDITIONS AS OUTLINED IN THE EPA OR APPLICABLE STATE GENERAL N.P.D.E.S. PERMIT FOR STORMWATER DISCHARGE ASSOCIATED WITH CONSTRUCTION ACTIVITIES AND STORMWATER POLLUTION PREVENTION PLAN.
- THE CONTRACTOR SHALL CONTACT APPLICABLE STATE UNDERGROUND LOCATION SERVICE AT LEAST 72 HOURS PRIOR TO ANY WORK AND SHALL CONTACT THE OWNER AND/OR ENGINEER SHOULD UTILITIES APPEAR TO BE IN CONFLICT WITH THE PROPOSED IMPROVEMENTS. IT SHALL BE THE RESPONSIBILITY OF THE CONTRACTOR TO RELOCATE ALL EXISTING UTILITIES WHICH CONFLICT WITH THE PROPOSED IMPROVEMENTS SHOWN ON THE PLANS.
- THE PLANS SHOW THE LOCATION OF ALL KNOWN UTILITIES LOCATED WITHIN THE LIMITS OF CONSTRUCTION ACCORDING TO INFORMATION PROVIDED BY THE VARIOUS UTILITY COMPANIES, PREVIOUS CONSTRUCTION PLANS AND AS EVIDENCED BY OBSERVATION OF ABOVE GROUND CONDITIONS BY THE SURVEYOR. THE ACCURACY OF THIS INFORMATION IS NOT GUARANTEED.
- THE CONTRACTOR SHALL CONTACT ALL UTILITY COMPANIES TO LOCATE MAINS, CONDUITS, SERVICE LINES, ETC. WITHIN THE CONSTRUCTION LIMITS. THE LOCATION AND PROTECTION OF UTILITY STRUCTURES, THEIR SUPPORT AND MAINTENANCE DURING CONSTRUCTION (IN COOPERATION WITH APPLICABLE UTILITY COMPANY) IS THE EXPRESSED RESPONSIBILITY OF THE CONTRACTOR.
- THE CONTRACTOR SHALL CONTACT ALL APPLICABLE UTILITIES AND VERIFY ANY AND ALL FEES ASSOCIATED WITH THE INSTALLATION OF ALL UTILITIES.
- ALL CONSTRUCTION ON THIS SITE TO BE PERFORMED IN COMPLIANCE WITH O.S.H.A. STANDARDS FOR WORKER SAFETY.
- ANY PART OF STORM SEWER TRENCHES RUNNING UNDER OR WITHIN 5' OF PAVEMENT TO BE BACKFILLED WITH GRANULAR MATERIAL.
- IT IS THE CONTRACTORS RESPONSIBILITY TO VERIFY LOCATION, SIZE, AND ELEVATION OF EXISTING UTILITIES, STRUCTURES, PIPES, PAVEMENTS, ETC. AS RELATED TO THEIR WORK. NOTIFY ENGINEER OF ANY CONFLICT AND/OR DISCREPANCIES IN THE CONSTRUCTION DOCUMENTS.
- MAINTAIN 10' HORIZONTAL AND 18" VERTICAL CLEARANCE BETWEEN STORM / SANITARY SEWER SYSTEMS AND DOMESTIC/FIRE LINE SERVICE. SANITARY SEWER LINE IN PROXIMITY OF WATER LINE SHALL BE C900 WATER MAIN GRADE PVC.
- CONTRACTOR TO INSTALL CONCRETE CRADLES WHEN THE VERTICAL SEPARATION (AS MEASURED FROM THE EXTERIOR OF THE PIPES) BETWEEN SANITARY SEWERS, WATER MAINS AND STORM SEWERS IS 18" OR LESS.
- IF ANY EXISTING STRUCTURES TO REMAIN ARE DAMAGED DURING CONSTRUCTION, IT SHALL BE THE CONTRACTORS RESPONSIBILITY TO REPAIR AND/OR REPLACE THE EXISTING STRUCTURE AS NECESSARY TO RETURN IT TO EXISTING CONDITIONS OR BETTER.
- WHEN PERFORMING EXCAVATIONS DURING PERIODS OF WET WEATHER, PROVIDE ADEQUATE DEWATERING, DRAINAGE AND GROUND WATER MANAGEMENT TO CONTROL MOISTURE OF SOILS.
- COMPACTED "B" BORROW BACK FILL REQUIRED OVER ALL UTILITIES IN PAVED AREAS.
- ALL UTILITY STRUCTURES IN PAVED AREAS SHALL BE FLUSH WITH PAVEMENT AND SHALL HAVE TRAFFIC BEARING RING AND COVERS.
- COORDINATE LOCATIONS AND CONNECTIONS OF BUILDING STORM LINES WITH PLUMBING DRAWINGS.
- FOLLOW ALL LOCAL AND STATE CODES IN REFERENCE TO STORM SEWER INSTALLATION.
- ALL EXISTING MANHOLE AND CATCH BASIN GRATES SHALL BE ADJUSTED TO NEW FINISH GRADE ELEVATIONS.
- EXISTING PIPES WITHIN CONSTRUCTION LIMITS ARE TO BE CLEANED OUT TO REMOVE ALL SILT AND DEBRIS.
- ALL STORM SEWER STRUCTURES IN PAVED AREAS SHALL BE FLUSH WITH PAVEMENT AND SHALL HAVE TRAFFIC BEARING RING AND COVERS.
- ALL STORM SEWER STRUCTURES SHALL HAVE A SMOOTH UNIFORM POURED MORTAR CHANNEL FROM INVERT IN TO INVERT OUT.
- NEW PIPES AND STRUCTURES WITHIN CONSTRUCTION LIMITS ARE TO BE CLEANED OUT TO REMOVE ALL SILT AND DEBRIS PRIOR TO FINAL TURNOVER TO THE OWNER.
- ALL FITTINGS AND ACCESSORIES INCLUDING BUT NOT LIMITED TO END CAPS, CLEANOUTS, REDUCERS, ETC., SHALL BE OF PPE MATERIAL COMPARABLE WITH STORAGE PIPES.
- PROVIDE BACKFILL WITH A MINIMUM OF 4" BEDDING MATERIAL OF #8 AGGREGATE COMPACTED IN 8" LIFTS TO 95% MAXIMUM DRY DENSITY.
- VERIFY EXISTING STORM INVERT ELEVATIONS PRIOR TO STARTING NEW STORM SEWER CONNECTION.

### LINE TYPES

	RIGHT OF WAY LINE
	FENCE
	GUARD RAIL
	BOUNDARY LINE
	FLOW LINE
	INDEX CONTOUR
	INTERMEDIATE CONTOUR
	UNDERGROUND GAS
	UNDERGROUND WATER
	AERIAL ELECTRIC
	UNDERGROUND ELECTRIC
	UNDERGROUND COMMUNICATIONS
	AERIAL COMMUNICATIONS
	UNDERGROUND FIBER OPTIC
	AERIAL FIBER OPTIC CABLE
	OVERHEAD UTILITY
	FORCE MAIN
	SANITARY SEWER LATERAL
	SANITARY SEWER MAIN
	ROOF DRAIN
	SUB SURFACE DRAIN
	STORM SEWER MAIN



Within Missouri Call  
811 or 800-344-7483  
24 Hours a Day, 7 Days a Week

PER MISSOURI STATE LAW ADVANCE NOTICE: 2 WORKING DAYS (MISSOURI REVISED STATUTES, CHAPTER 319, GENERAL SAFETY REQUIREMENTS - SECTIONS 319.010 THROUGH 319.020) SHALL BE KNOWN AS THE "UNDERGROUND FACILITY SAFETY AND DAMAGE PREVENTION ACT"

10505 N. College Avenue  
Indianapolis, Indiana 46280  
w@e.h.e.net

317.846.6611  
800.1452.6408  
317.843.0546 fax

ALLAN H. WEIHE, P.E., L.S. - FOUNDER

**WEIHE**  
**ENGINEERS**

Land Surveying | Civil Engineering  
Landscape Architecture

Build with confidence.

PROJECT NO.:		BY:
W23.0784	DO	
DWO NAME:		DATE:
W23.0784	DO	08/13/2024
PROJECT LOCATION:		DATE:
LOT 4 AND 5, CALEDONIA CENTER, OFALLON, MO	DO	08/28/2024
ISSUED FOR CITY OF OFALLON COMMENTS:		DATE:
	DO	10/18/2024
DESIGNED BY:		DATE:
BS	DO	
DRAWN BY:		DATE:
JS	DO	
CHECKED BY:		DATE:
DD	DO	08/28/2024

08/28/2024



PREPARED FOR:  
**HOTEL - CALEDONIA**  
LOT 4 AND 5, CALEDONIA CENTER, OFALLON, MO  
63368  
**STORM PROFILE 204-200**  
PART OF SECTION 13, TOWNSHIP 48 NORTH, RANGE 2 EAST, ST. CHARLES COUNTY, MO.

SHEET NO.  
**C603**  
PROJECT NO.  
W23.0784