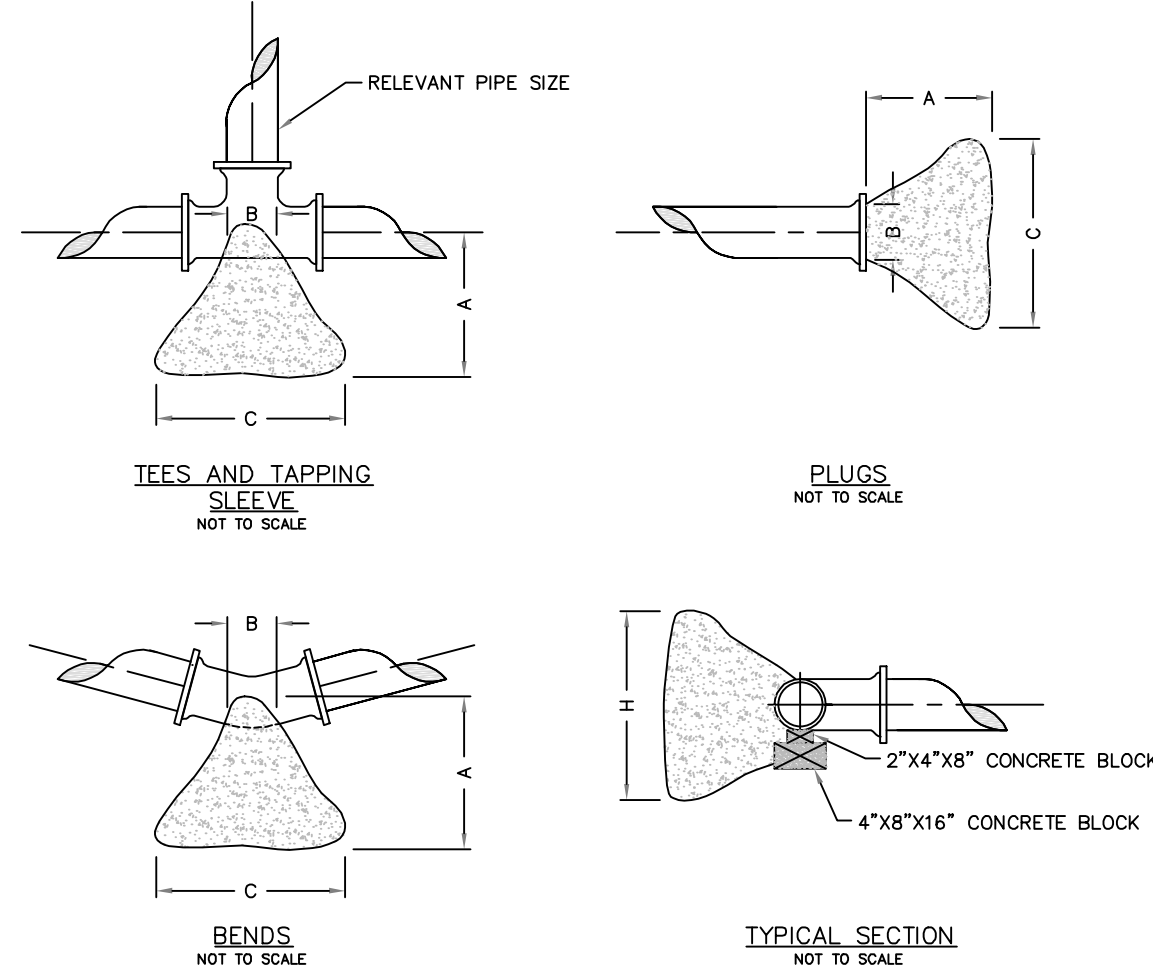


NOTE: THIS DETAIL IS FROM PWSD#2



#### THRUST BLOCK DIMENSIONS - INCHES

PIPE DIA.	ALL FTGS.	TEE PLUG TAPPING	90 DEGREE BEND	45 DEGREE BEND	22-1/2 BEND	11-1/4 BEND
	A B	C H	C H	C H	C H	C H
4	14 4	24 12	26 15	18 12	12 12	12 12
6	16 6	36 18	36 24	30 18	24 12	12 12
8	20 8	36 30	42 36	36 24	24 18	18 12
10	20 10	48 36	66 36	36 36	28 24	18 18
12	24 12	68 36	82 42	52 36	40 24	28 18

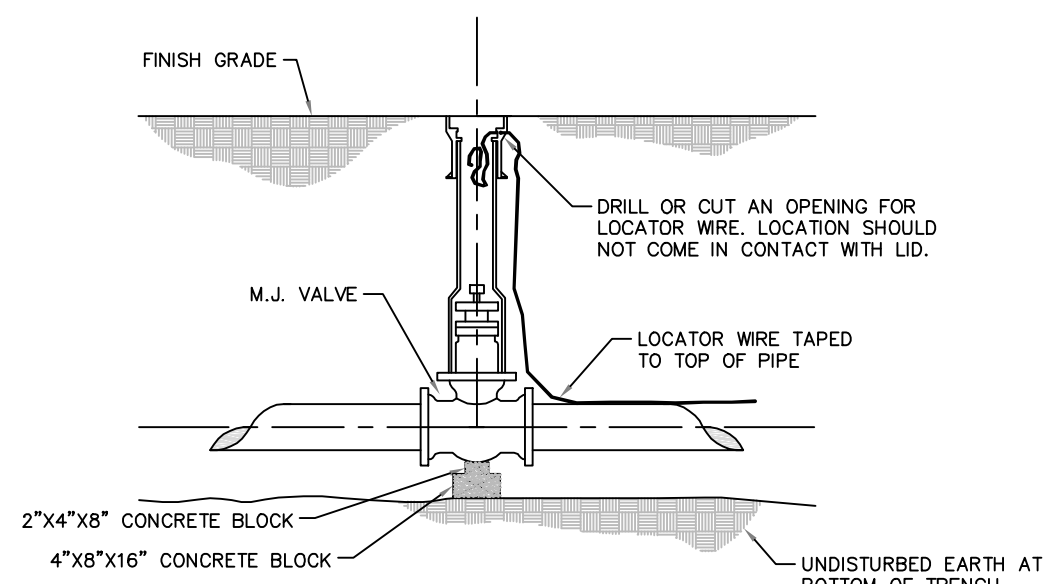
#### NOTE

FOR FITTINGS LARGER THAN 12", SPECIAL RESTRAINT DESIGNS ARE REQUIRED.

#### HORIZONTAL THRUST BLOCKING DETAIL "C"

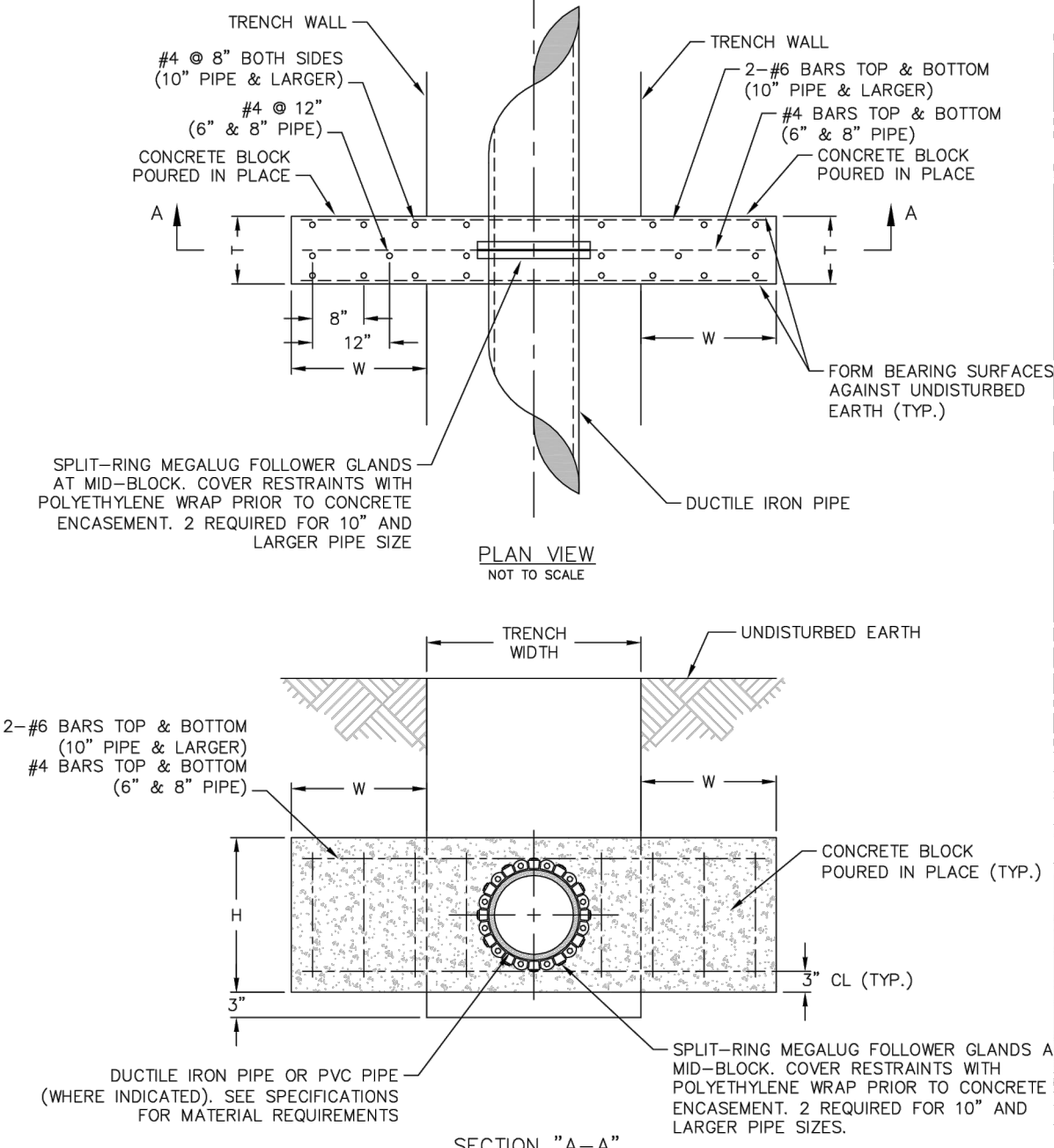
NOTE: THIS DETAIL IS FROM PWSD#2

Buffalo box is an acceptable product to use.  
Tyler 562-S and 564-S are acceptable products.



#### GATE VALVE DETAIL DETAIL "D"

NOTE: THIS DETAIL IS FROM PWSD#2

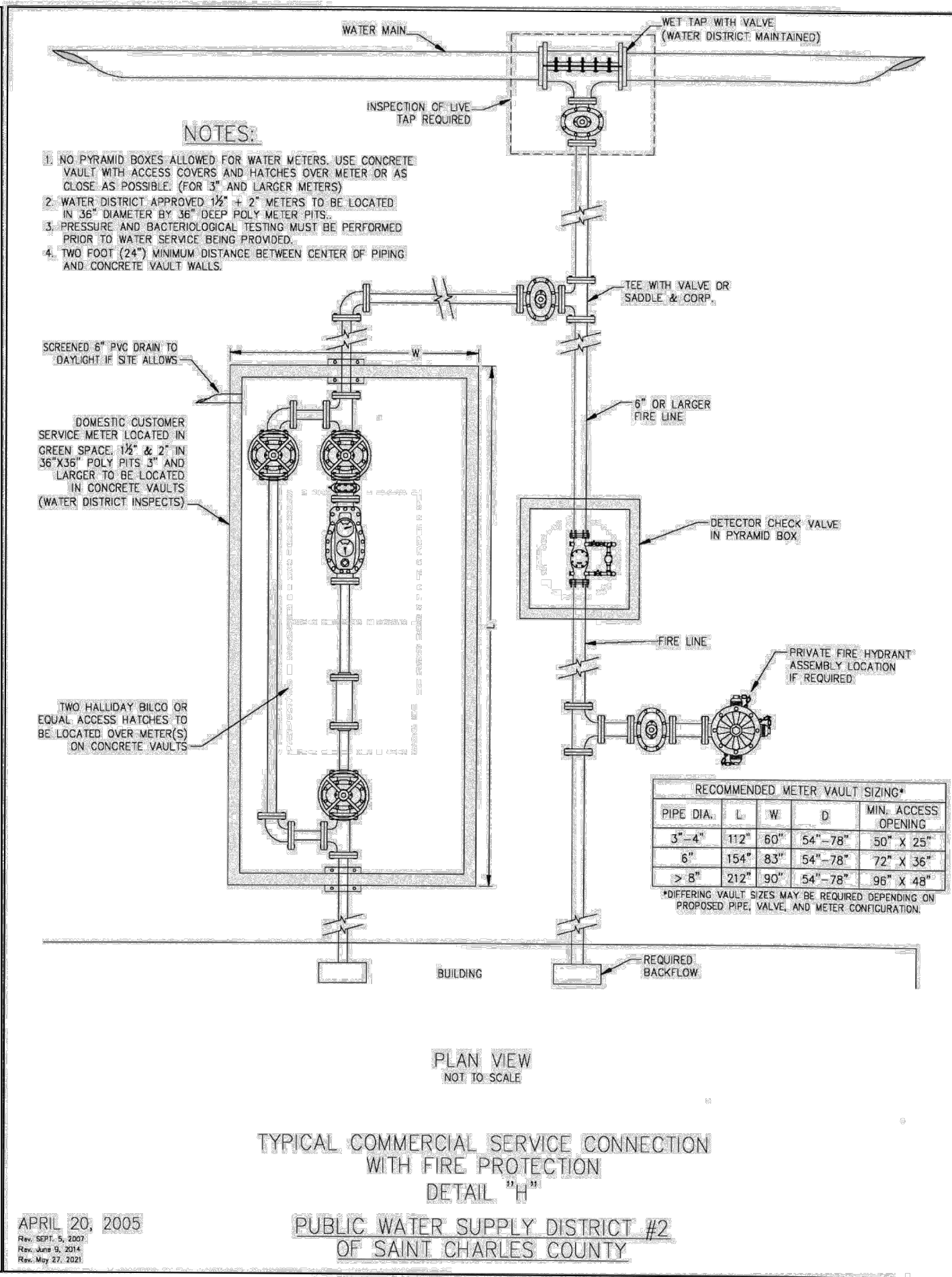


#### NOTES

- 1) CONSTRUCT CROSS BLOCKS AT A MINIMUM OF 15' FROM CONNECTION POINT AND 5' FROM THE BELL END OF PIPE.
- 2) CROSS BLOCKS SHALL BE PRE-POURED PRIOR TO SHUTDOWN AND CONNECTIONS.

PIPE DIA. "D"	WIDTH "W"	HEIGHT "H"	THICKNESS "T"
4	12	12	12
6	24	24	12
8	24	24	12
10	30	30	18
12	36	36	18

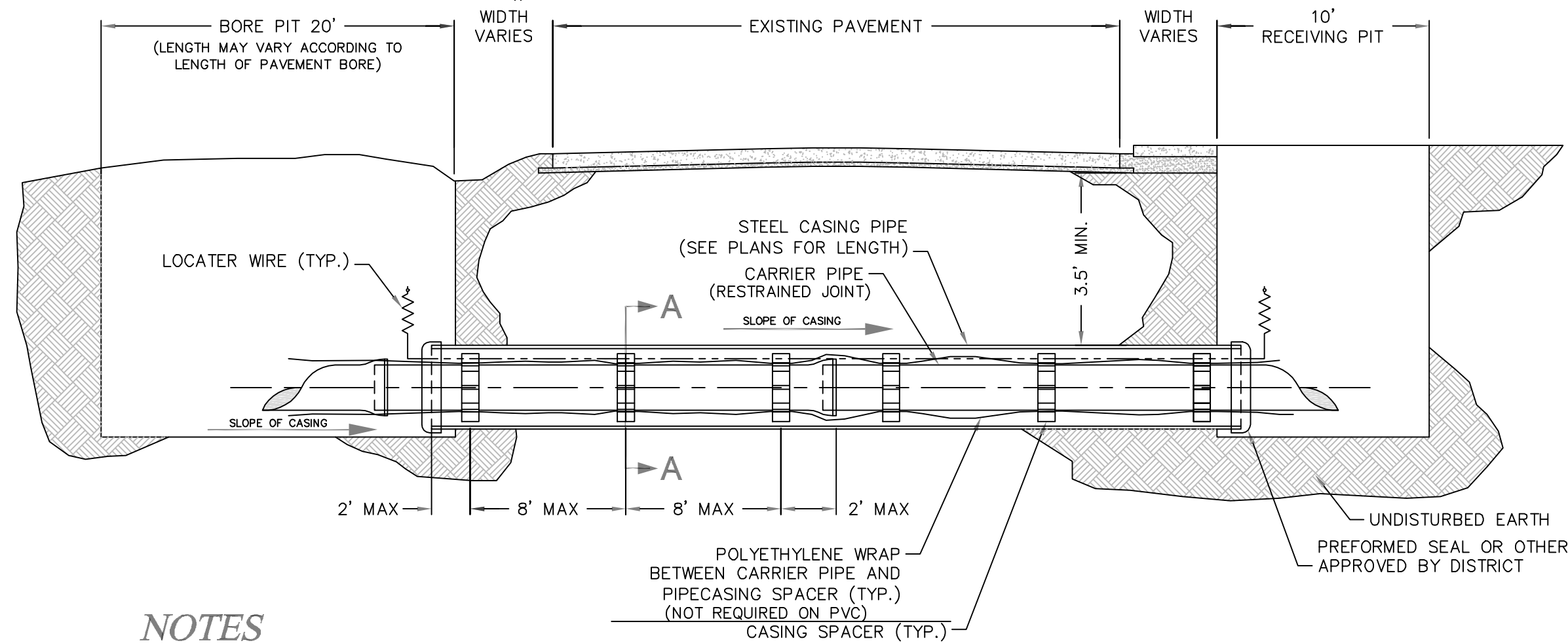
#### CROSS BLOCK DETAIL "E"



#### TYPICAL COMMERCIAL SERVICE CONNECTION WITH FIRE PROTECTION DETAIL "H"

#### PUBLIC WATER SUPPLY DISTRICT #2 OF SAINT CHARLES COUNTY

NOTE: THIS DETAIL IS FROM PWSD#2



#### NOTES

- A. INSTALLATION OF THE CASING AND CARRIER PIPES SHALL MEET THE REQUIREMENTS OF PUBLIC WATER SUPPLY DISTRICT No. 2 OF ST. CHARLES COUNTY.
- B. CASING PIPES FOR ROAD AND HIGHWAY CROSSINGS SHALL BE WELDED STEEL PIPE WITH A MINIMUM WALL THICKNESS OF 1/4" NON-COATED AND SHALL HAVE A MINIMUM DIAMETER OF 10" LARGER THAN THE NOMINAL SIZE OF THE CARRIER PIPE.
- C. THE CARRIER PIPE SHALL BE RESTRAINED JOINT PIPE

FOR SANITARY SEWER BORES, SEE THE MSD DETAIL

#### TYPICAL WATER BORE AND ENCASEMENT DETAIL "H"