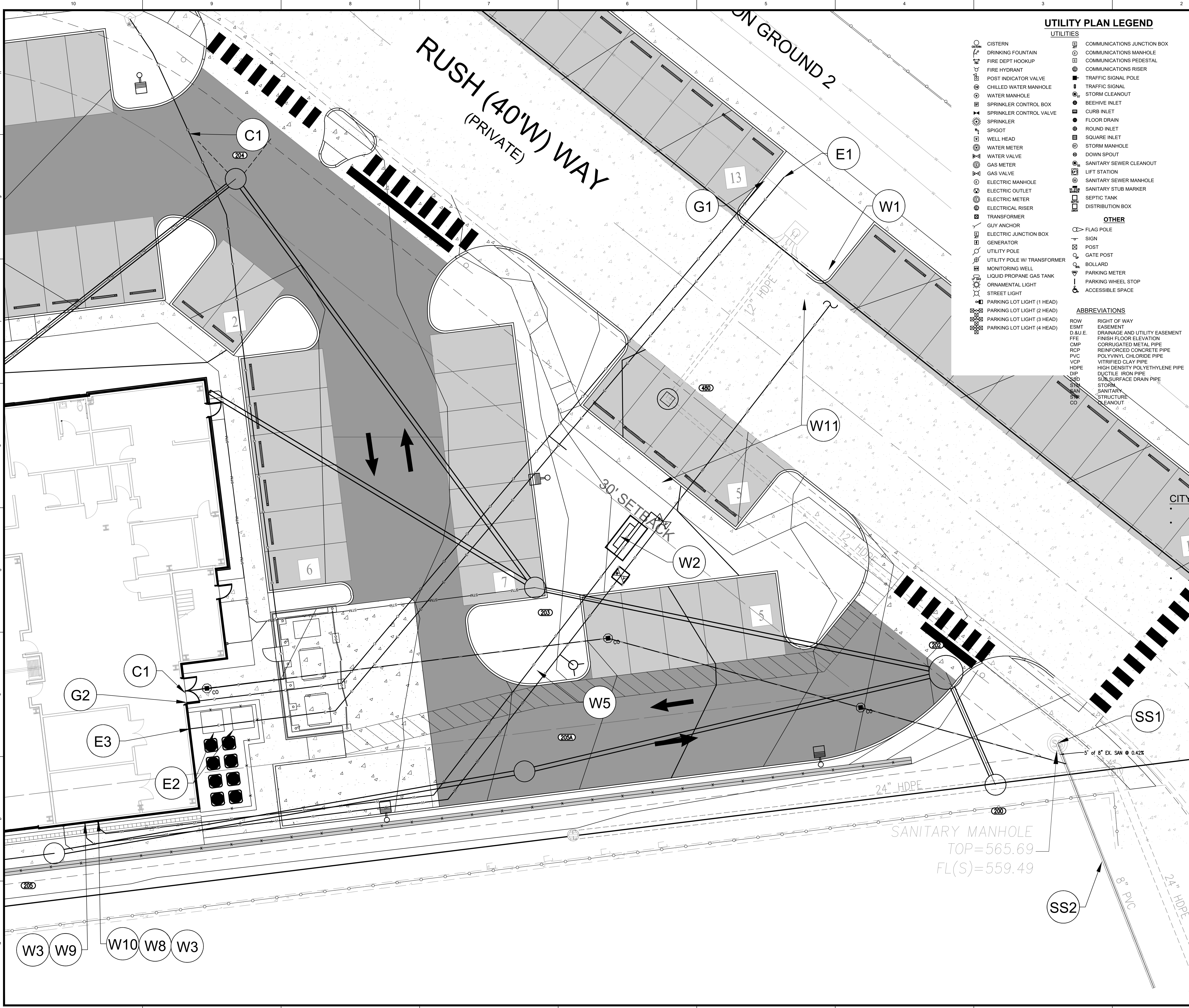


LOCATION: S:\2023\W230784 - STL\Engineering\Design\W230784-STL-C800 - Utility - plan.dwg
DATE/TIME: 12/31/2024 12:51pm
PLOT/PRINT: 12/31/2024 12:51pm



UTILITY PLAN LEGEND

UTILITIES

- CISTERN
- DRINKING FOUNTAIN
- FIRE DEPT HOOKUP
- FIRE HYDRANT
- POST INDICATOR VALVE
- CHILLED WATER MANHOLE
- WATER MANHOLE
- SPRINKLER CONTROL BOX
- SPRINKLER CONTROL VALVE
- SPRINKLER
- SPIGOT
- WELL HEAD
- WATER METER
- WATER VALVE
- GAS METER
- GAS VALVE
- ELECTRIC MANHOLE
- ELECTRIC OUTLET
- ELECTRIC METER
- ELECTRICAL RISER
- TRANSFORMER
- GUY ANCHOR
- ELECTRIC JUNCTION BOX
- GENERATOR
- UTILITY POLE
- UTILITY POLE W/ TRANSFORMER
- MONITORING WELL
- LIQUID PROPANE GAS TANK
- ORNAMENTAL LIGHT
- STREET LIGHT
- PARKING LOT LIGHT (1 HEAD)
- PARKING LOT LIGHT (2 HEAD)
- PARKING LOT LIGHT (3 HEAD)
- PARKING LOT LIGHT (4 HEAD)

- COMMUNICATIONS JUNCTION BOX
- COMMUNICATIONS MANHOLE
- COMMUNICATIONS PEDESTAL
- COMMUNICATIONS RISER
- TRAFFIC SIGNAL POLE
- TRAFFIC SIGNAL
- STORM CLEANOUT
- BEEHIVE INLET
- CURB INLET
- FLOOR DRAIN
- ROUND INLET
- SQUARE INLET
- STORM MANHOLE
- DOWN SPOUT
- SANITARY SEWER CLEANOUT
- LIFT STATION
- SANITARY SEWER MANHOLE
- SANITARY STUB MARKER
- SEPTIC TANK
- DISTRIBUTION BOX

OTHER

- FLAG POLE
- SIGN
- POST
- GATE POST
- BOLLARD
- PARKING METER
- PARKING WHEEL STOP
- ACCESSIBLE SPACE

ABBREVIATIONS

- ROW RIGHT OF WAY
- ESMT EASEMENT
- D.&U.E. DRAINAGE AND UTILITY EASEMENT
- F.F.E. FINISH FLOOR ELEVATION
- CMP CORRUGATED METAL PIPE
- RCP REINFORCED CONCRETE PIPE
- PVC POLYVINYL CHLORIDE PIPE
- VCP VITRIFIED CLAY PIPE
- HDPE HIGH DENSITY POLYETHYLENE PIPE
- DIP DUCTILE IRON PIPE
- S&D SUBSURFACE DRAIN PIPE
- STN STORM
- STR SANITARY
- CO STRUCTURE CLEANOUT

UTILITY PLAN NOTES

SANITARY SEWER NOTES

- (SS1) CONNECT PROPOSED 6" SANITARY SEWER LATERAL TO EXISTING SANITARY SEWER MAIN. COORDINATE CONNECTION WITH MEP. PROVIDE CLEANOUTS AS REQUIRED/SHOWN. VERIFY INVERTS ON EXISTING LINE AND COORDINATE CONDITIONS WITH MEP. ADJUST AS REQUIRED.
- (SS2) EXISTING 8" PVC SANITARY SEWER.
- (SS3) PROPOSED SANITARY LATERAL. CLEANOUTS ARE REQUIRED.
- (SS4) PROVIDE 18" MINIMUM VERTICAL CLEARANCE BETWEEN SANITARY/WATER/STORM SEWER PIPES AND ALL OTHER PIPES. INSTALL CONCRETE CRADLE IF CLEARANCE IS LESS THAN 18"

WATER SERVICE NOTES:

- (W1) COORDINATE AND CONNECT 6" WATER SERVICE LINE TO EXISTING 12" WATER MAIN
- (W2) REFER TO PWS&2 DETAIL H (SHEET C800)
- (W3) COORDINATE WITH PLUMBING DRAWINGS
- (W4) EXISTING FIRE HYDRANT.
- (W5) PROPOSED FIRE HYDRANT ASSEMBLY. REFER TO DETAIL.
- (W6) PROPOSED POST INDICATOR VALVE (PIV).
- (W7) PROPOSED FIRE DEPARTMENT CONNECTION
- (W8) PROPOSED 4" WATER VALVE. REFER TO DETAIL.
- (W9) PROPOSED 6" PVC FIRE SERVICE LINE.
- (W10) PROPOSED PE DOMESTIC SERVICE LINE
- (W11) PROVIDE FOR A HORIZONTAL DIRECTIONAL DRILL FOR THE WATER SERVICE UNDER MIDFIELD CIRCLE TO THE TAP. WATER SERVICE TO BE FUSIBLE DR11 PIPING FOR THE HDD. TRANSITION BACK TO PVC ONCE ON PRIVATE PROPERTY.

ELECTRIC NOTES:

- (E1) COORDINATE AND CONNECT BUILDING ELECTRICAL LINE FROM SERVICE DROP LOCATION TO TRANSFORMER. COORDINATE CONNECTION WITH POWER COMPANY AND ELECTRICAL DRAWINGS. ADJUST AS REQUIRED.
- (E2) PROPOSED TRANSFORMER PAD LOCATION. COORDINATE WITH UTILITY PROVIDER IF A NEW TRANSFORMER IS REQUIRED.
- (E3) BUILDING ELECTRICAL LINE POINT OF CONNECTION. COORDINATE CONNECTION WITH POWER COMPANY AND ELECTRICAL DRAWINGS. ADJUST AS REQUIRED.

COMMUNICATION NOTES:

- (C1) COORDINATE AND CONNECT BUILDING COMMUNICATION SERVICE LINE(S) TO CONNECTION POINT AS SHOWN. ADJUST AS REQUIRED.

GAS SERVICE NOTES:

- (G1) CONNECT PROPOSED GAS SERVICE TO EXISTING GAS LINE. REFER TO PLUMBING DRAWINGS AND COORDINATE WITH SERVICE PROVIDER.
- (G2) PROPOSED GAS METER LOCATION. REFER TO PLUMBING DRAWINGS AND COORDINATE WITH SERVICE PROVIDER.

CITY NOTES:

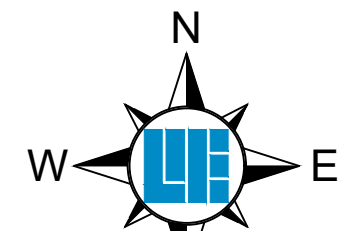
- ALL PROPOSED UTILITIES AND/OR UTILITY RELOCATIONS SHALL BE LOCATED UNDERGROUND.
- ALL FILL PLACED UNDER PROPOSED STORM AND SANITARY SEWERS, PROPOSED ROADS AND/OR PAVED AREAS SHALL BE COMPACTED TO 90% OF MAXIMUM DENSITY AS DETERMINED BY THE MODIFIED AASHTO T-180 COMPACTION TEST OR 95% OF MAXIMUM DENSITY AS DETERMINED BY THE STANDARD PROCTOR TEST AASHTO T-99. ALL FILL PLACED IN PROPOSED ROADS SHALL BE COMPACTED FROM BOTTOM OF THE FILL UP. ALL TESTS SHALL BE VERIFIED BY A SOILS ENGINEER CONCURRENT WITH GRADING AND BACKFILL OPERATIONS.
- DEVELOPER MUST SUPPLY CITY CONSTRUCTION INSPECTORS WITH AN ENGINEER'S SOIL REPORT PRIOR TO AND DURING SITE SOIL TESTING.

PAVEMENT

- STANDARD DUTY ASPHALT
- HEAVY DUTY ASPHALT
- CONCRETE PAVEMENT

LINE TYPES

- SAN SANITARY SEWER LATERAL
- SM SANITARY SEWER MAIN
- FM FORCE MAIN
- UW UNDERGROUND WATER
- EA AERIAL ELECTRIC
- UE UNDERGROUND ELECTRIC
- OU OVERHEAD UTILITY
- CA AERIAL COMMUNICATIONS
- FC UNDERGROUND FIBER OPTIC
- FOA AERIAL FIBER OPTIC CABLE
- UG UNDERGROUND GAS
- STM STORM SEWER MAIN
- RD ROOF DRAIN
- SD SUB SURFACE DRAIN
- FL FLOW LINE
- RL RIGHT OF WAY LINE
- F FENCE
- GR GUARD RAIL
- BL BOUNDARY LINE

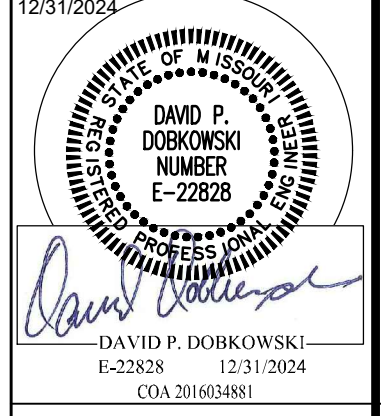


PER MISSOURI STATE LAW ADVANCE NOTICE: 2 WORKING DAYS (MISSOURI REVISED STATUTES, CHAPTER 316, GENERAL SAFETY REQUIREMENTS - SECTIONS 316.010 THROUGH 316.020 SHALL BE KNOWN AS THE "UNDERGROUND FACILITY SAFETY AND DAMAGE PREVENTION ACT")

10505 N. College Avenue
Indianapolis, Indiana 46280
w@weihe.net
317 | 846 - 6611
800 | 452 - 6408
317 | 843 - 0546 fax
ALLAN H. WEIHE, P.E., L.S. - FOUNDER

WEIHE
ENGINEERS
Land Surveying | Civil Engineering
Landscape Architecture
Build with confidence.

DATE	BY	PROJECT NO.
06/13/2024	DD	W23.0784
08/28/2024	DD	DWG NAME: C800 - UTILITY PLAN
08/28/2024	DD	ISSUED FOR CITY OF OFALLON COMMENTS
10/18/2024	DD	ISSUED FOR CITY OF OFALLON COMMENTS
12/31/2024	DD	ISSUED FOR CITY OF OFALLON COMMENTS
DATE	BY	PROJECT NO.
06/13/2024	DD	W23.0784
08/28/2024	DD	DWG NAME: C800 - UTILITY PLAN
08/28/2024	DD	ISSUED FOR CITY OF OFALLON COMMENTS
10/18/2024	DD	ISSUED FOR CITY OF OFALLON COMMENTS
12/31/2024	DD	ISSUED FOR CITY OF OFALLON COMMENTS



PREPARED FOR: HOTEL - CALEDONIA
LOT 4 AND 5, CALEDONIA CENTER, OFALLON, MO
63368
SEWER AND UTILITY PLAN
PART OF SECTION 13, TOWNSHIP 48 NORTH, RANGE 2 EAST, ST. CHARLES COUNTY, MO.
SHEET NO. C800
PROJECT NO. W23.0784