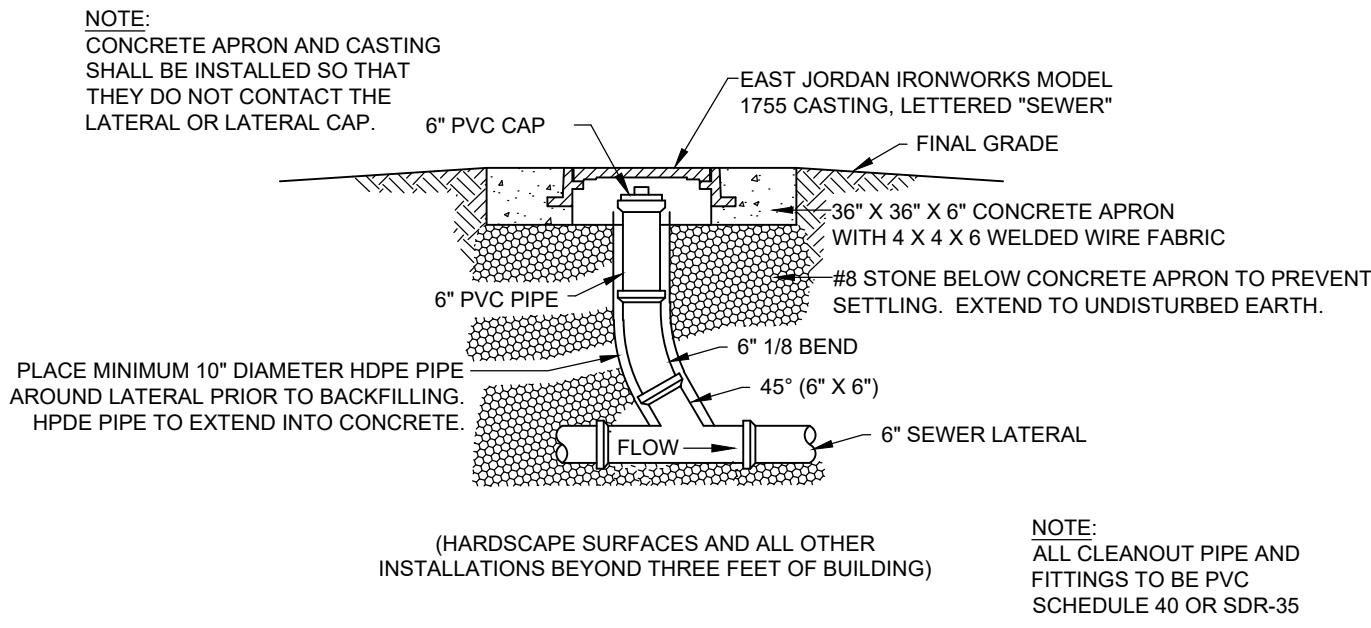
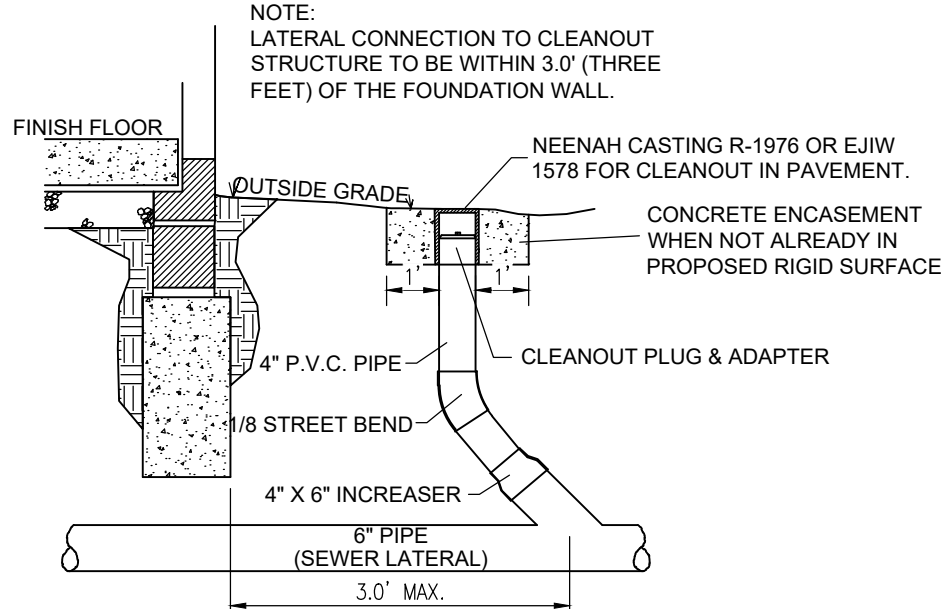


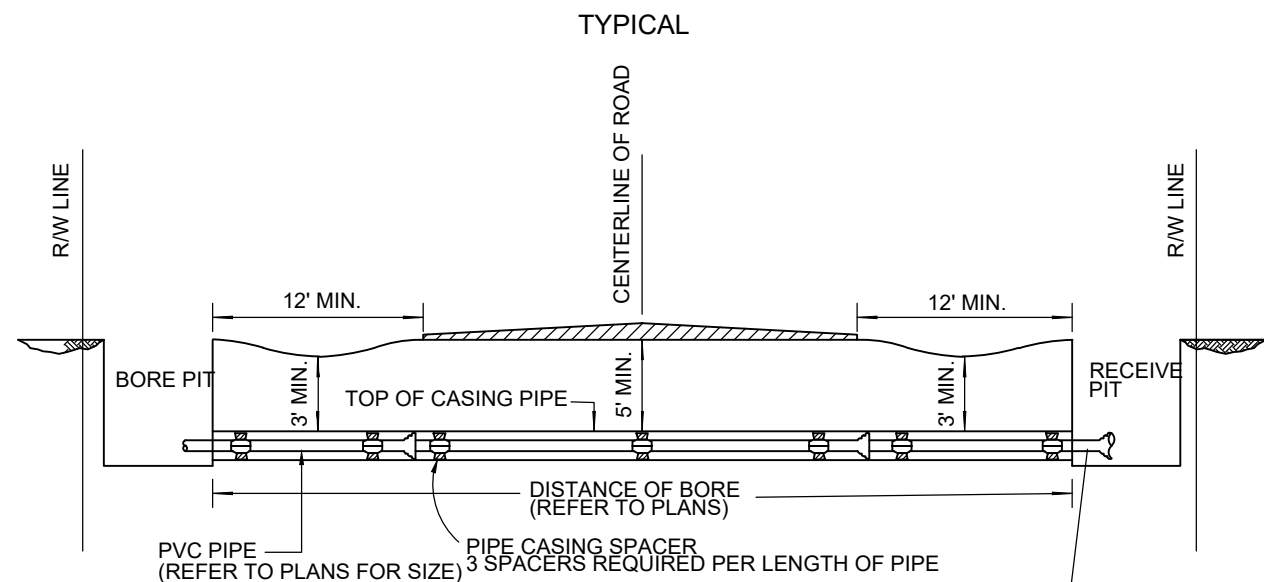
LOCATION: G:\2023\W230784 - ST\Engineering\Design\Drawings\W230784S1-C801 - Utility Details.dwg  
DATE/TIME: December 31, 2024 - 5:01pm  
PLOT/ID: B1 - Summary



TYPICAL CLEANOUT SECTION  
TYPE 2  
(NO SCALE)



TYPICAL CLEANOUT SECTION  
TYPE 1  
(NO SCALE)



NOTE:  
ALL JOINTS IN CASING  
PIPE MUST BE RESTRAINED.

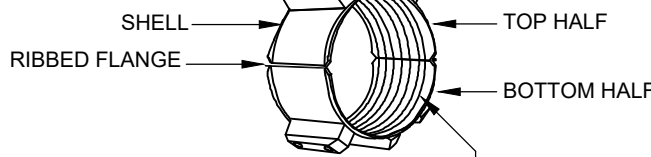
PROTECTION AT ENDS OF CASING  
CASING SHALL HAVE BOTH ENDS BLOCKED UP IN SUCH  
A WAY AS TO PREVENT THE ENTRANCE OF FOREIGN MATERIAL,  
BUT ALLOWING LEAKAGE TO PASS.

WELDING  
STEEL CASING SECTIONS SHALL BE CONNECTED BY WELDING.  
WELD SHALL CONFORM TO AWWA C206.

CASING SPACERS.

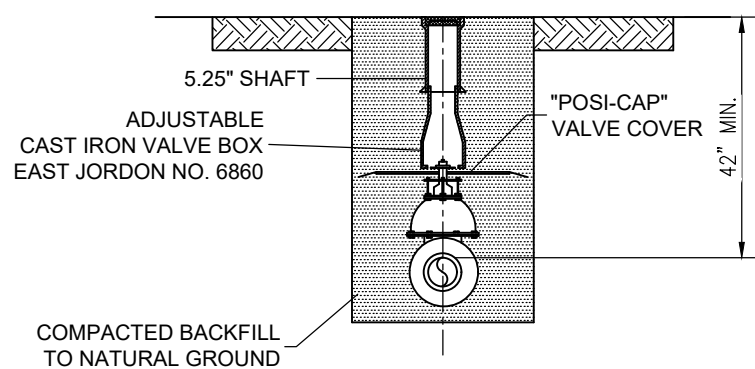
SPECIFY OD OF CARRIER PIPE  
AND ID OF CASING PIPE

RUNNER - ULTRA HIGH MOLECULAR WEIGHT POLYMER  
WITH HIGH RESISTANCE TO ABRASION AND SLIDE WEAR  
DURA SLIDE IS A CHEMICAL MODIFIED, FILLED,  
ULTRA HIGH MOLECULAR WEIGHT POLYMER.



LINER - PVC .090 THICK WITH 85-90 DUROMETER

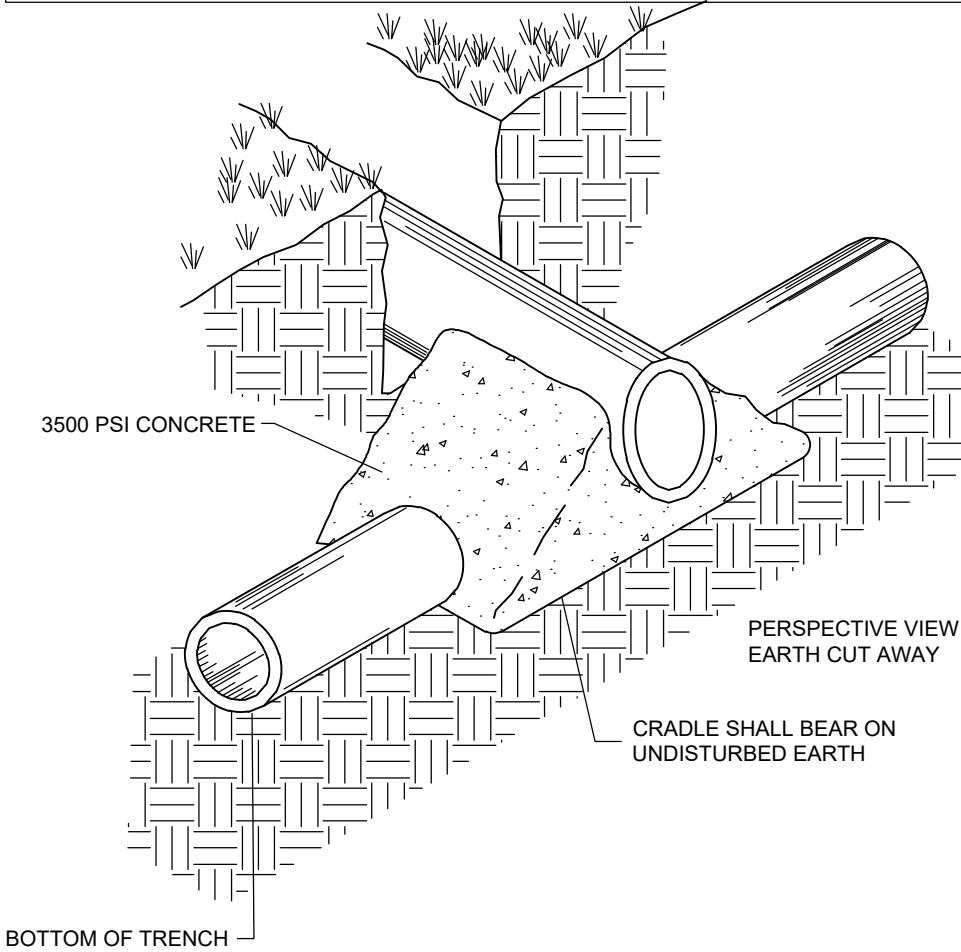
TYPICAL BORE CASING PIPE  
(NO SCALE)



NOTE:  
SIMILAR INSTALLATION FOR CURB  
BOX OR SERVICE LINE

TYPICAL VALVE BOX INSTALLATION  
(NO SCALE)

NOTE: TO BE USED WHEN CLEAR DISTANCE (FROM EXTERIOR PIPE DIAMETER TO EXTERIOR PIPE  
DIAMETER) BETWEEN SANITARY SEWER PIPING (MAINS, LATERALS, FORCE MAINS, ETC.) AND ALL  
OTHER PIPES IS 18" OR LESS, PER INSPECTOR'S DIRECTION, OR WHERE NOTED ON THE DRAWINGS.  
A MINIMUM CLEAR DISTANCE OF 3" MUST BE PROVIDED TO MAINTAIN STRUCTURAL INTEGRITY OF  
THE CONCRETE.



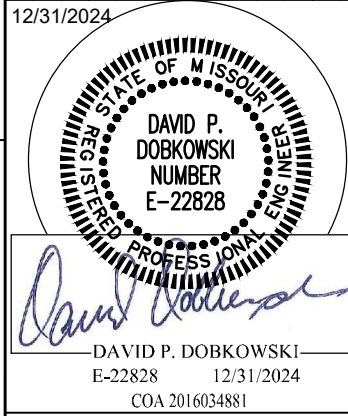
CONCRETE CRADLE DETAIL  
(NO SCALE)



Within Missouri Call  
811 or 800-344-7483  
24 Hours a Day, 7 Days a Week.

PER MISSOURI STATE LAW ADVANCE NOTICE: 2 WORKING  
DAYS (MISSOURI REVISED STATUTES, CHAPTER 316,  
GENERAL SAFETY REQUIREMENTS - SECTIONS 316.010  
THROUGH 316.020 SHALL BE KNOWN AS THE  
"UNDERGROUND FACILITY SAFETY AND DAMAGE PREVENTION  
ACT")

REVISIONS AND ISSUES	DATE	BY	PROJECT NO.:
ISSUED FOR CLIENT REVIEW	06/13/2024	DD	W23.0784
ISSUED FOR CITY OF OFALLON COMMENTS	08/28/2024	DD	DWG NAME: C801 - UTILITY PLAN DETAILS
ISSUED FOR CITY OF OFALLON COMMENTS	10/16/2024	DD	DESIGNED BY: BS
			DRAWN BY: JS
			CHECKED BY: DD
			DATE: 09/28/2024



PREPARED FOR:  
**HOTEL - CALEDONIA**  
LOT 4 AND 5, CALEDONIA CENTER, OFALLON, MO  
63068  
**UTILITY PLAN DETAILS**  
PART OF SECTION 13, TOWNSHIP 46 NORTH, RANGE 2 EAST, ST. CHARLES COUNTY, MO.

SHEET NO.  
**C801**

PROJECT NO.  
**W23.0784**