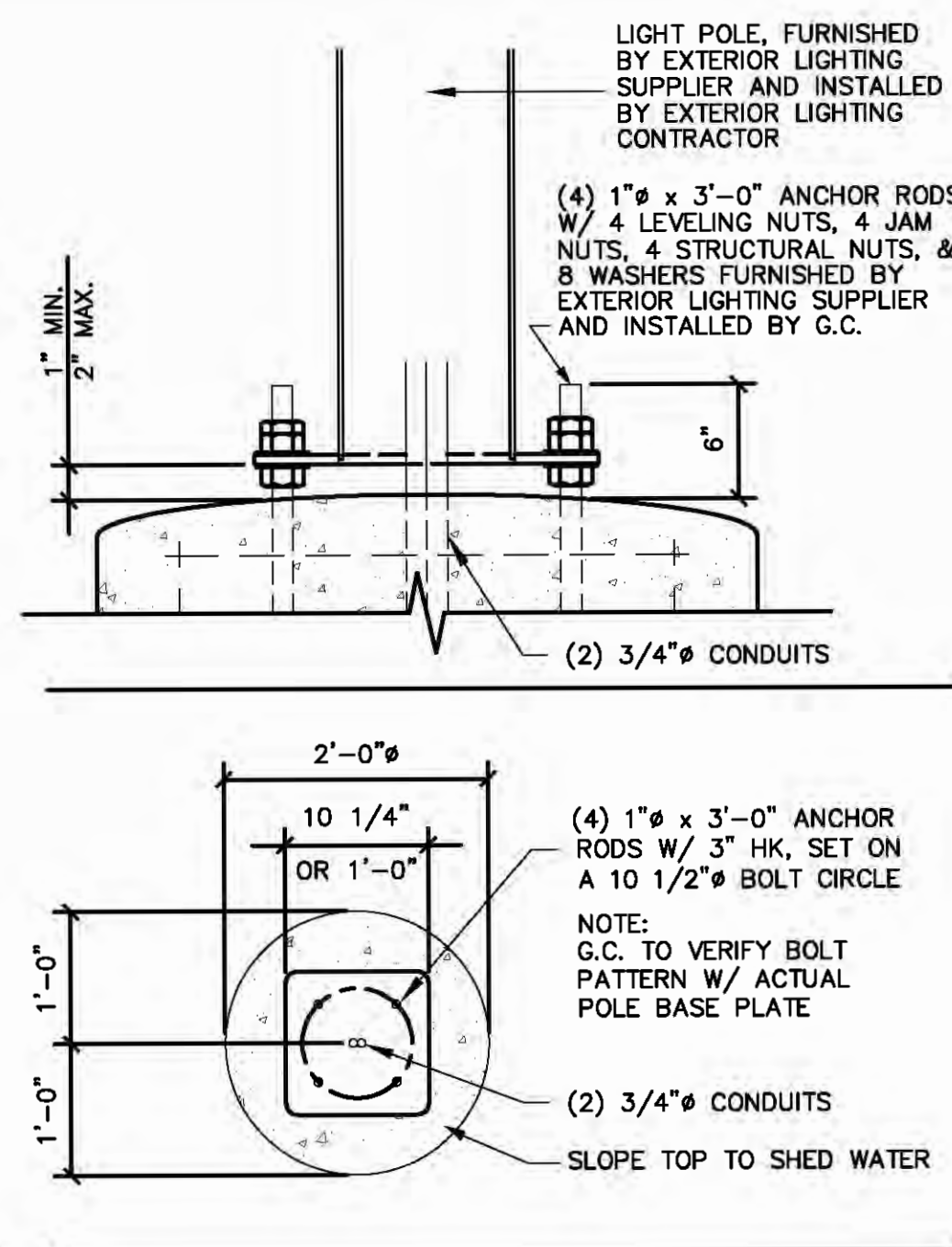


- NOTES:**
- FOUNDATION DEPTH AS REQUIRED BY CODE OR TO ACHIEVE ADEQUATE SOIL BEARING CAPACITY AS DETERMINED IN A SOILS REPORT BY A LICENSED GEOTECHNICAL ENGINEER, [7-07] DEPTH MINIMUM. IF THE EXISTING EARTH IS NON-VIRGIN FILL MATERIAL OR OTHERWISE UNSUITABLE CONSULT A LICENSED GEOTECHNICAL ENGINEER.
 - PROVIDE CONCRETE MIXTURE IN ACCORDANCE WITH ACI301.
 - f'c = 3000psi
 - AIR ENTRAINMENT = 6% +/- 1%
 - WATER TO CEMENT RATIO = 0.45 MAX.

1 LIGHT POLE BASE



- ANCHOR RODS SHALL BE SET IN ACCORDANCE WITH THE AISC "CODE OF STANDARD PRACTICE."
- COMPLY WITH THE FOLLOWING ACI GUIDES:
 - ACI304 FOR CONCRETE PLACEMENT
 - ACI306.1 FOR COLD WEATHER PLACEMENT
 - ACI301 FOR HOT WEATHER PLACEMENT
 - ACI308.1 FOR CONCRETE CURING
- COMPLY WITH CRSI'S "MANUAL OF STANDARD PRACTICE" AND ACI318 FOR PLACING REINFORCEMENT.

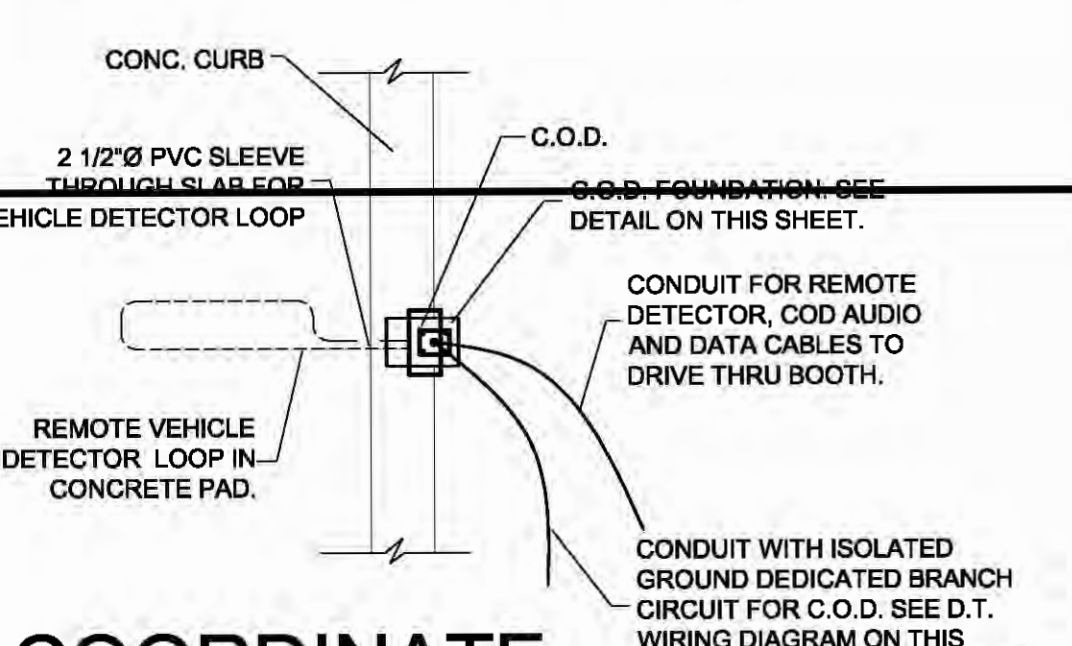
DETECTOR LOOP GENERAL NOTES

DISTRIBUTOR:
W.S. TRAFFIC
562-923-9600 (PHONE)
562-923-7555 (FAX)
MODEL #714 3'-0" X 8'-0"

MATERIAL:
POLYVINYLCHLORIDE TUBING 1/2" I.D.
100 PSI LOOP MADE FROM ONE LENGTH OF THIN 14 GAUGE STRANDED WIRE. LEAD-IN IS PRE-TWISTED AT FACTORY.

CONSTRUCTION:
FORMED WITH ONE CONTINUOUS LENGTH OF PVC WITH NO SHARP CORNERS AS IN DRAWING ABOVE. WIRE LOOPED, FORMED & PIGTAILED AS ILLUSTRATED ON THIS SHEET.

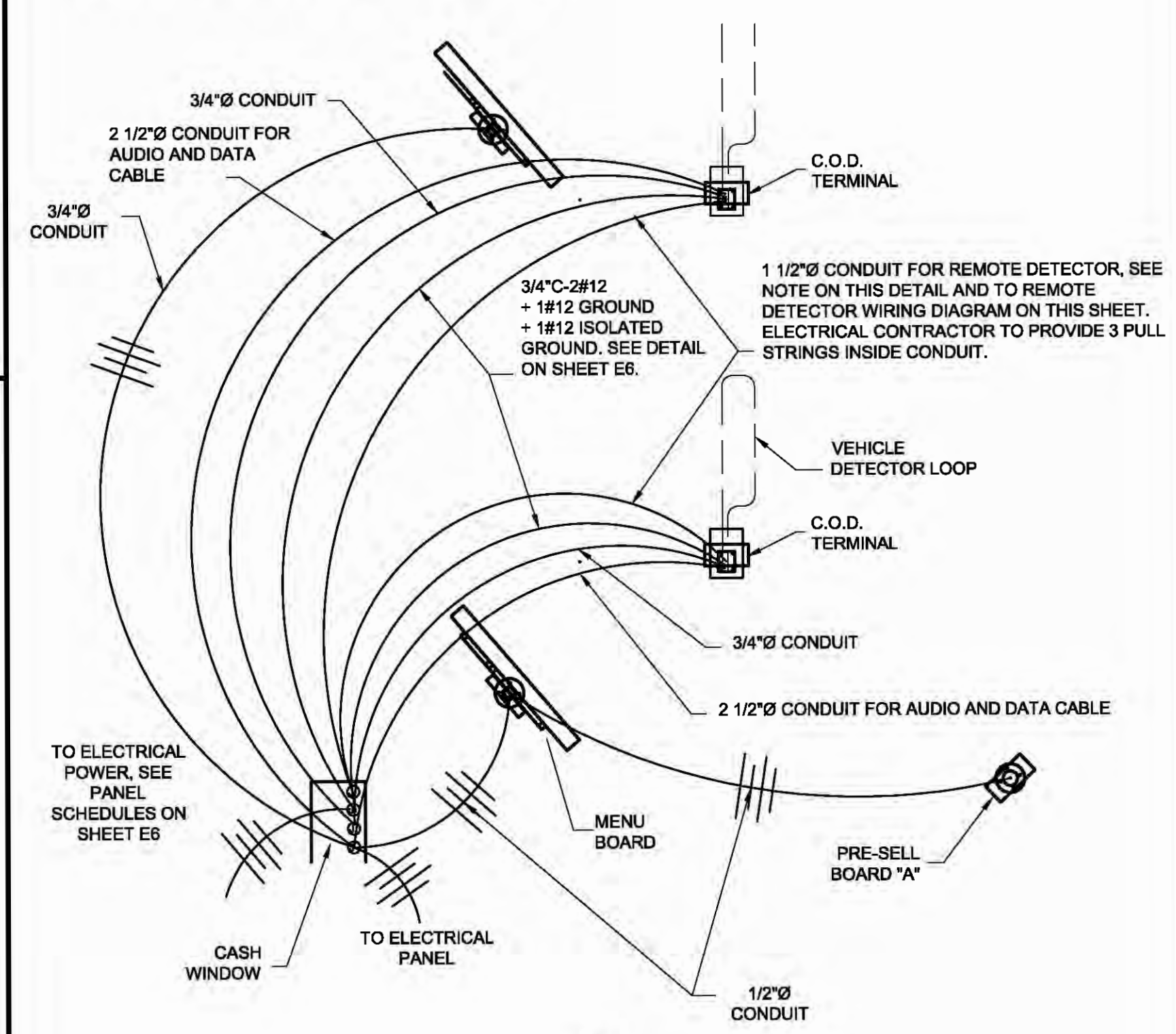
NOTE:
DO NOT USE REINFORCEMENT RODS BELOW LOOP. KEEP ALL REBARS AND SCREENING AT LEAST 2'-0" AWAY FROM LOOP.



2 COORDINATE WITH ELECTRICAL UPDATE ON SHEET E-DT

REMOTE VEHICLE DETECTOR WIRING DIAGRAM

COORDINATE WITH ELECTRICAL UPDATE ON SHEET E-DT



3 DRIVE THRU SITE WIRING DIAGRAM

ATTENTION SEWER CONTRACTOR:

FOR SEWER PIPE (STORM, SANITARY AND COMBINED) WITH A DESIGN GRADE LESS THAN ONE PERCENT (1%), VERIFICATION OF THE PIPE GRADE WILL BE REQUIRED FOR EACH INSTALLED REACH OF SEWER, PRIOR TO ANY SURFACE RESTORATION OR INSTALLATION OF ANY SURFACE IMPROVEMENTS. THE CONTRACTOR'S FIELD SUPERVISOR WILL BE REQUIRED TO PROVIDE DAILY DOCUMENTATION VERIFYING THAT THE AS-BUILT PIPE GRADE MEETS THE DESIGN GRADE THROUGH THE SUBMITAL OF SIGNED CUT SHEETS TO THE SEWER INSPECTOR UPON REQUEST.

FIELD SURVEYED VERIFICATION MUST BE UNDER THE DIRECTION OF A LICENSED LAND SURVEYOR OR REGISTERED ENGINEER. THE CONTRACTOR WILL BE REQUIRED TO REMOVE AND REPLACE ANY SEWER REACH HAVING AN AS-BUILT GRADE WHICH IS FLATTER THAN THE DESIGN GRADE BY MORE THAN 0.1%. SEWERS WITH GRADES GREATER THAN THE DESIGN GRADE MAYBE LEFT IN PLACE, PROVIDED NO OTHER SEWER GRADE IS REDUCED BY THIS VARIANCE IN THE AS-BUILT GRADE.

SEWER AUTHORITY ALSO RESERVES THE RIGHT TO REQUIRE THE CONTRACTOR TO REMOVE AND REPLACE ANY SEWER (AT ANY TIME PRIOR TO CONSTRUCTION APPROVAL) FOR WHICH THE AS-BUILT GRADE DOES NOT COMPLY WITH THE GRADE TOLERANCE STATED IN THE ABOVE PARAGRAPH.

THE SEWER CONTRACTOR SHALL BE RESPONSIBLE FOR ANY COSTS ASSOCIATED WITH THE FIELD VERIFICATION OF THE SEWER GRADE, OR REMOVAL AND REPLACEMENT OF THE SEWER PIPE OR ASSOCIATED APPURTENANCES.

| INSIDE DIAMETER OF PIPE (INCHES) | PAVLINE WIDTH OF TRENCH (INCHES) |
|----------------------------------|----------------------------------|
| 4, 6, 8, 12 | 28 |
| 15 | 32 |
| 18 | 36 |
| 21 | 39 |
| 24 | 42 |

PREPARED BY: **Farnsworth GROUP**

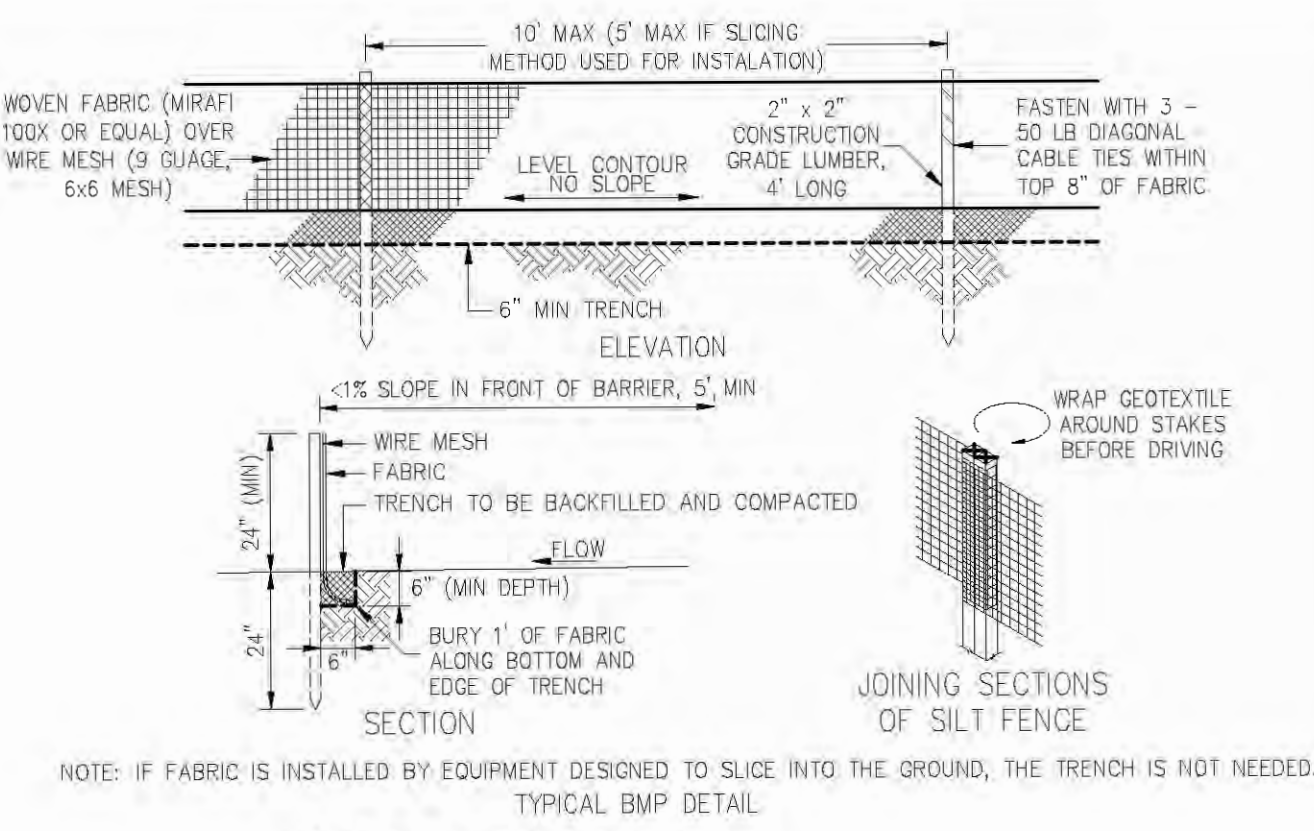
ROBERT E. POLK, JR. E-20082 ENGINEER

DATE: 8-15-17

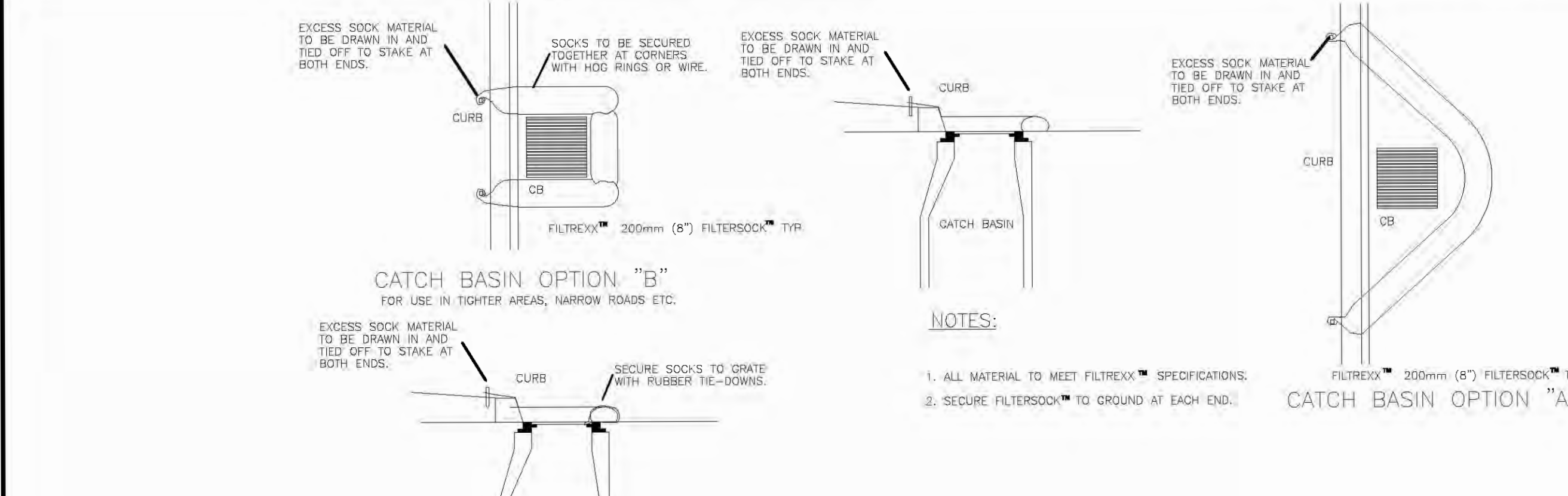
THIS SHEET HAS BEEN SIGNED, SEALED, AND DATED ELECTRONICALLY

25 ALLEN AVENUE, SUITE 200
ST. LOUIS, MISSOURI 63119
(314) 962-7000 / (314) 942-2653 Fax
www.f-w.com

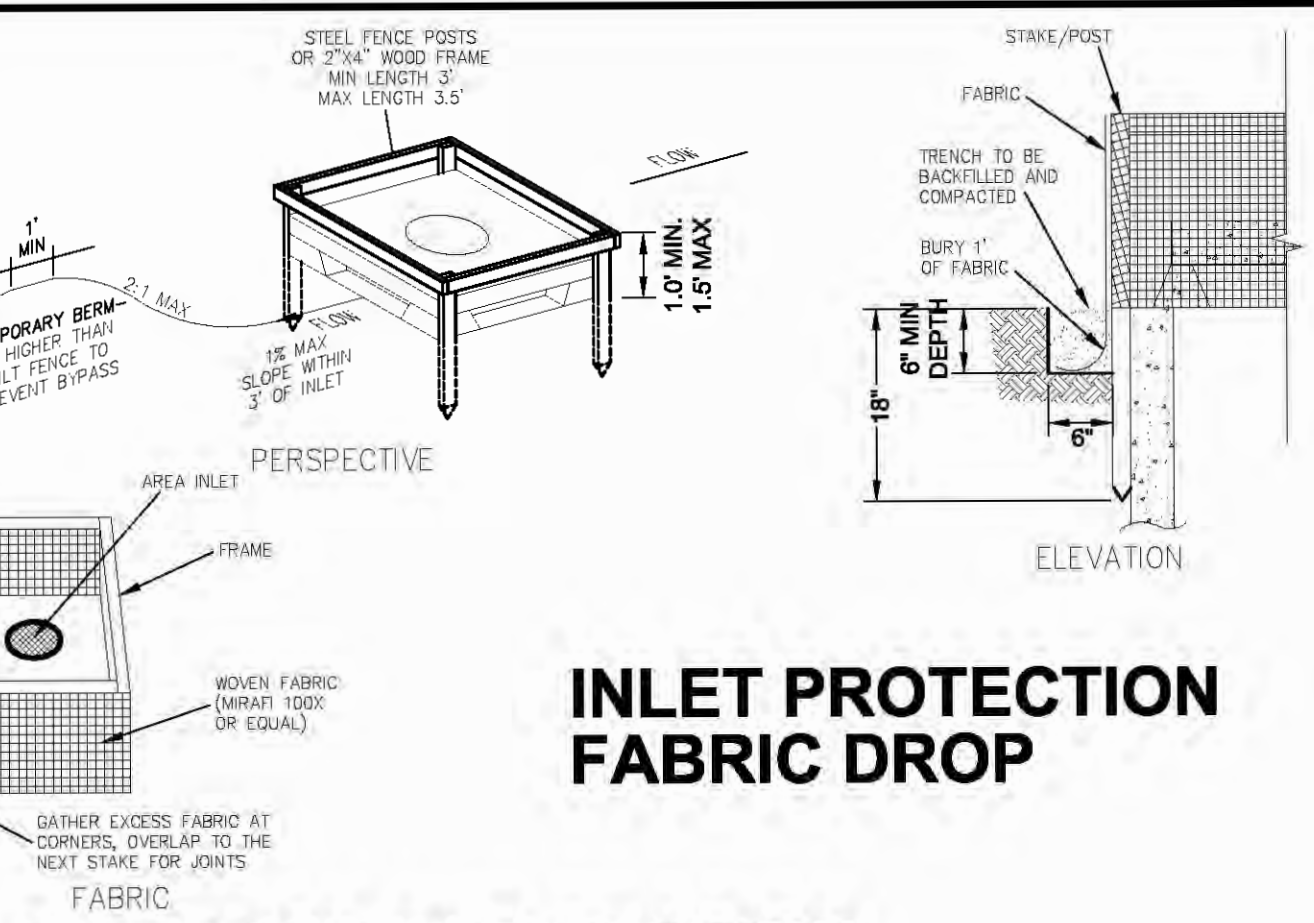
Farnsworth Group, Inc.
Missouri State Certificate of Authority #001321



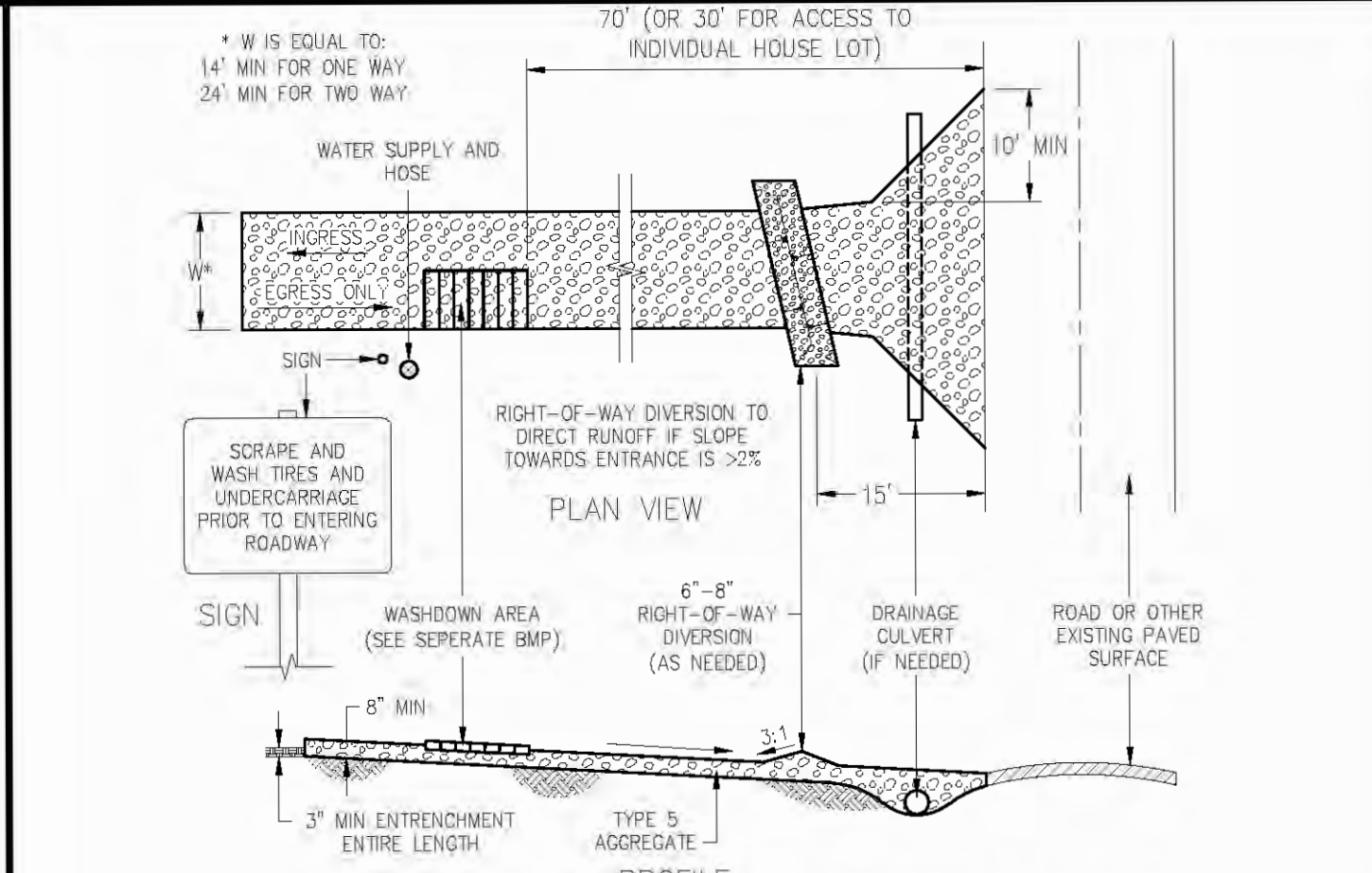
SILT FENCE



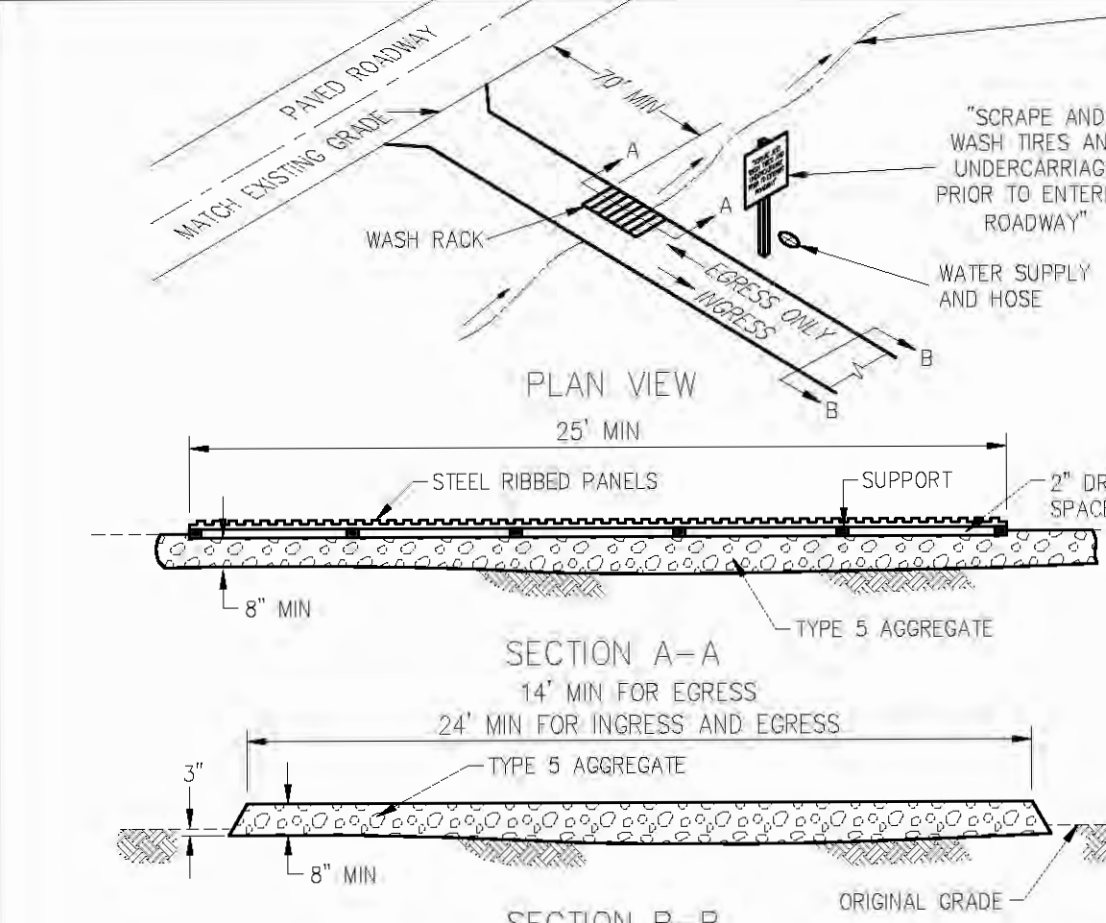
INLET PROTECTION (SOCK)



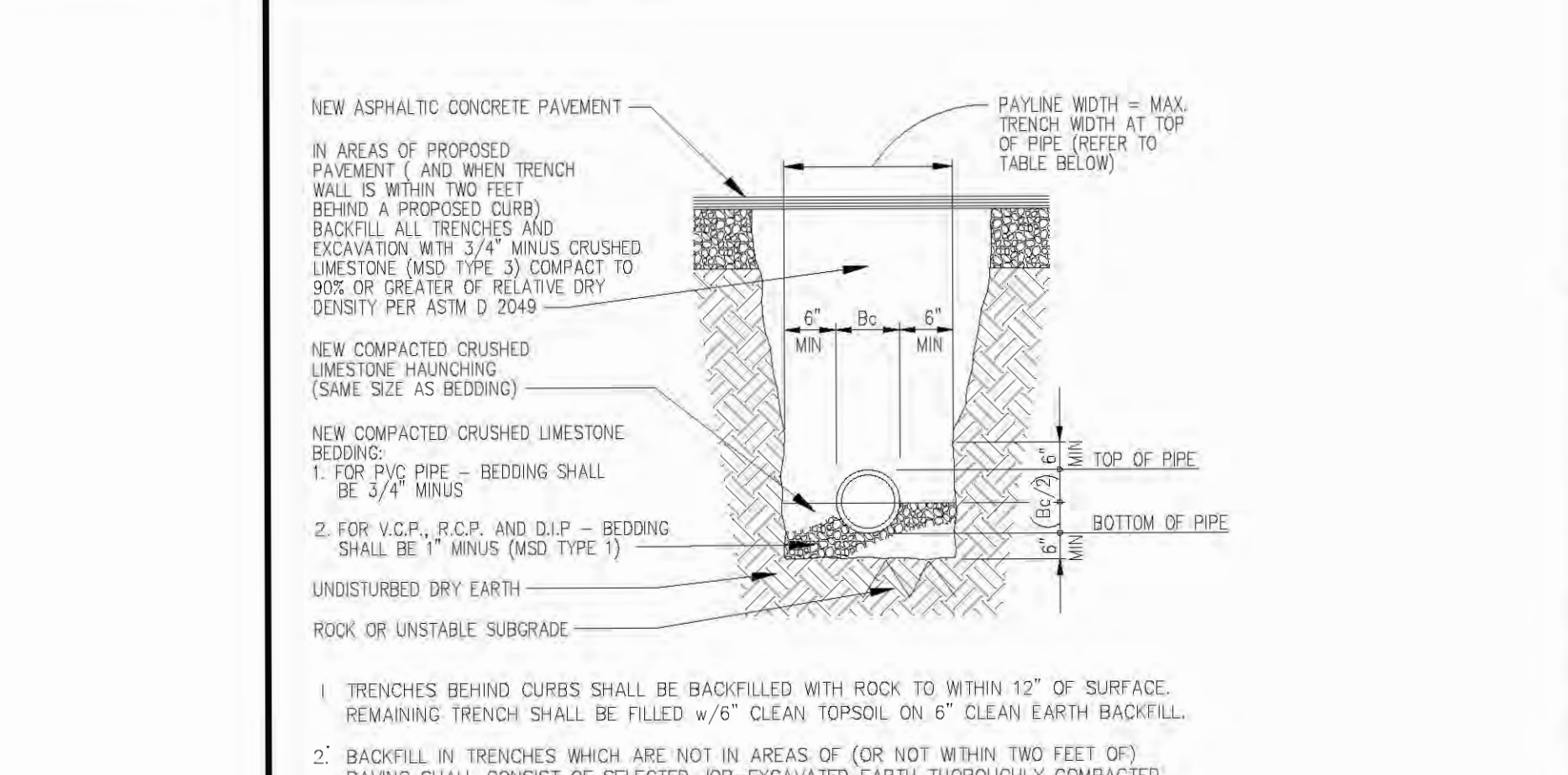
4 SILTATION AND EROSION CONTROL DETAILS



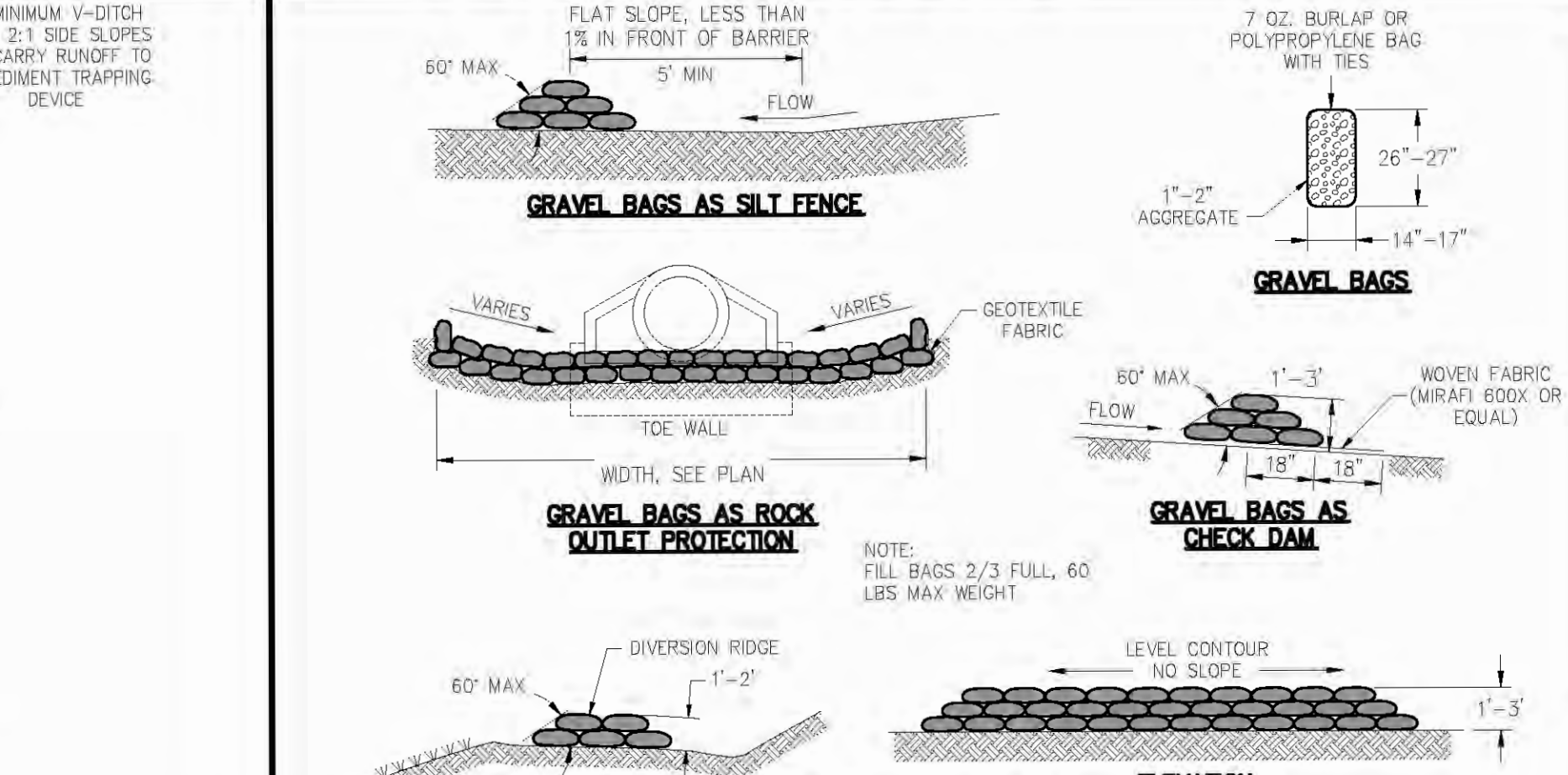
CONSTRUCTION ENTRANCE



WASHDOWN STATION



2 UTILITY TRENCH DETAIL



GRAVEL BAGS BMP

PREPARED FOR: **McDonald's USA, LLC**

© 2011 McDonald's USA, LLC

These drawings and specifications are the confidential and proprietary property of McDonald's USA, LLC and shall not be copied or reproduced for use on this specific site in conjunction with its issue date and are not suitable for use on a different site or at a later time. Use of the services of properly licensed architects and engineers, reproduction of the contract documents for reuse on another project is not authorized.

STANDARD SITE DETAILS
PAVEMENTS AND CURBS

DATE ISSUED: JAN 2013

SHEET NO: **SD3**