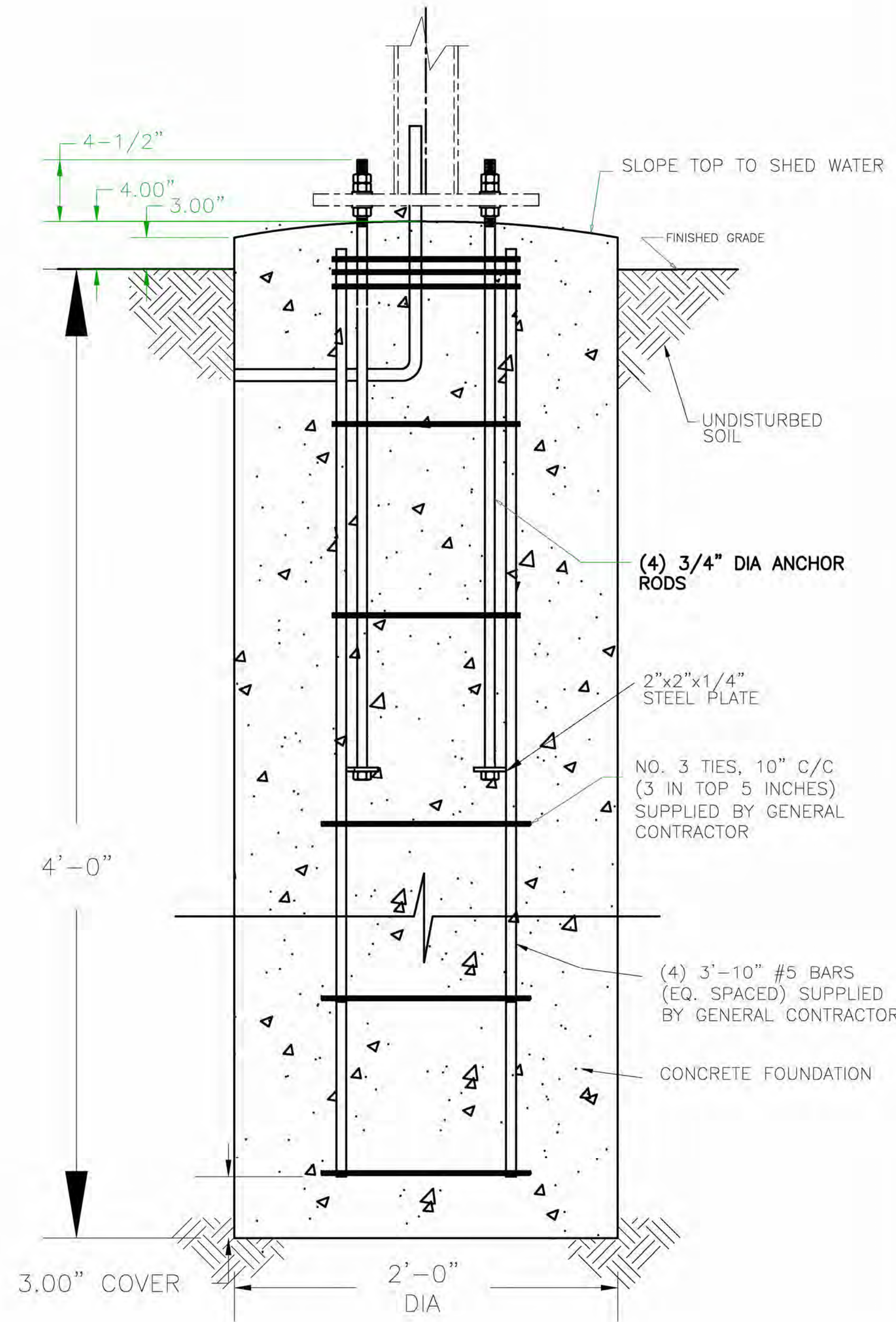
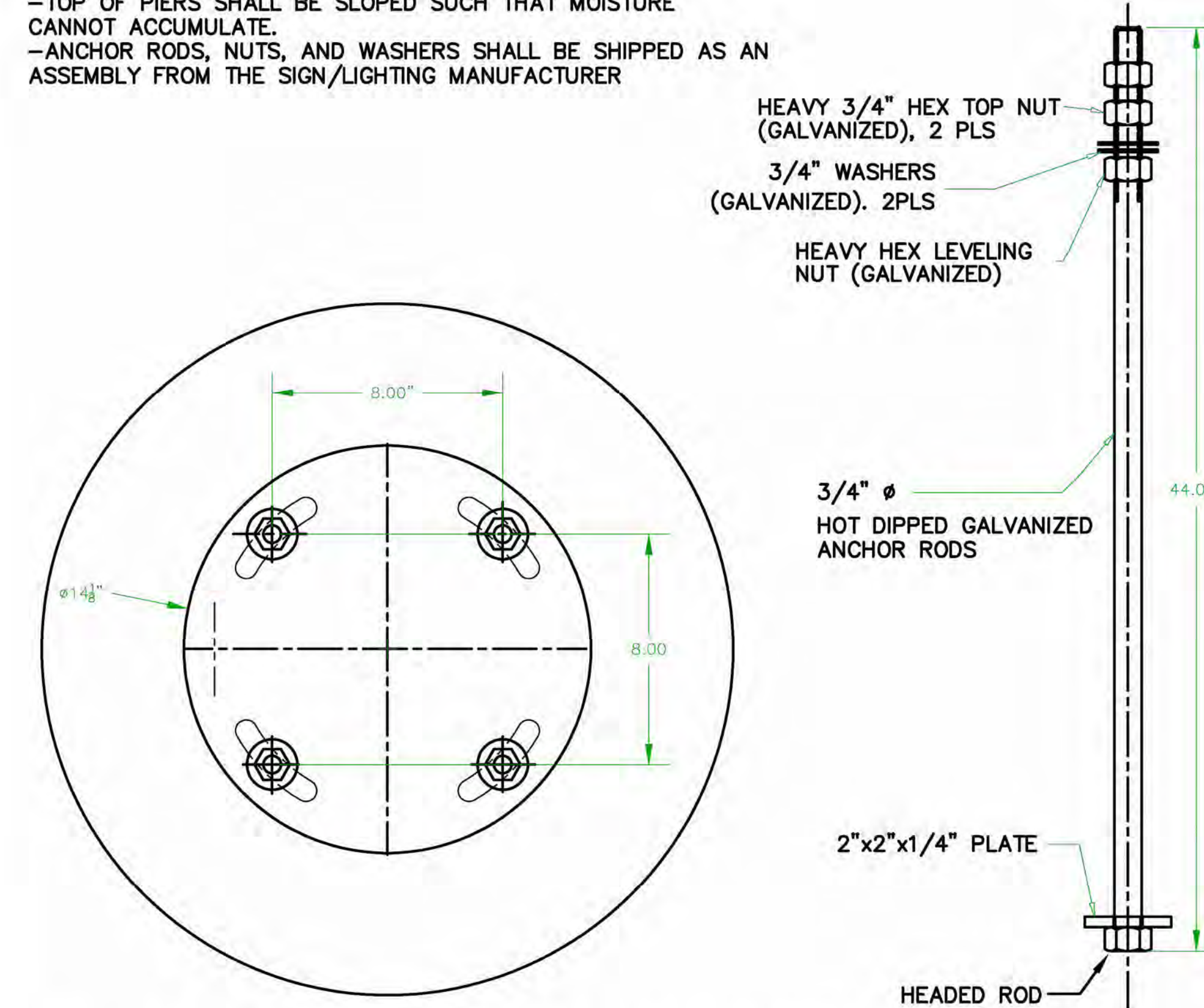


- NOTES:
 -PIER DEPTHS REQUIRED ARE MINIMUMS. ALL PIERS TO EXTEND TO FROST DEPTH AS DETERMINED BY LOCAL JURISDICTION.
 -TOP OF PIERS SHALL BE SLOPED SUCH THAT MOISTURE CANNOT ACCUMULATE.
 -MINIMUM ALLOWABLE LATERAL SOIL BEARING PRESSURE 100 PSF/FT OF DEPTH (x2)
 -ALL REINFORCING STEEL BY GENERAL CONTRACTOR



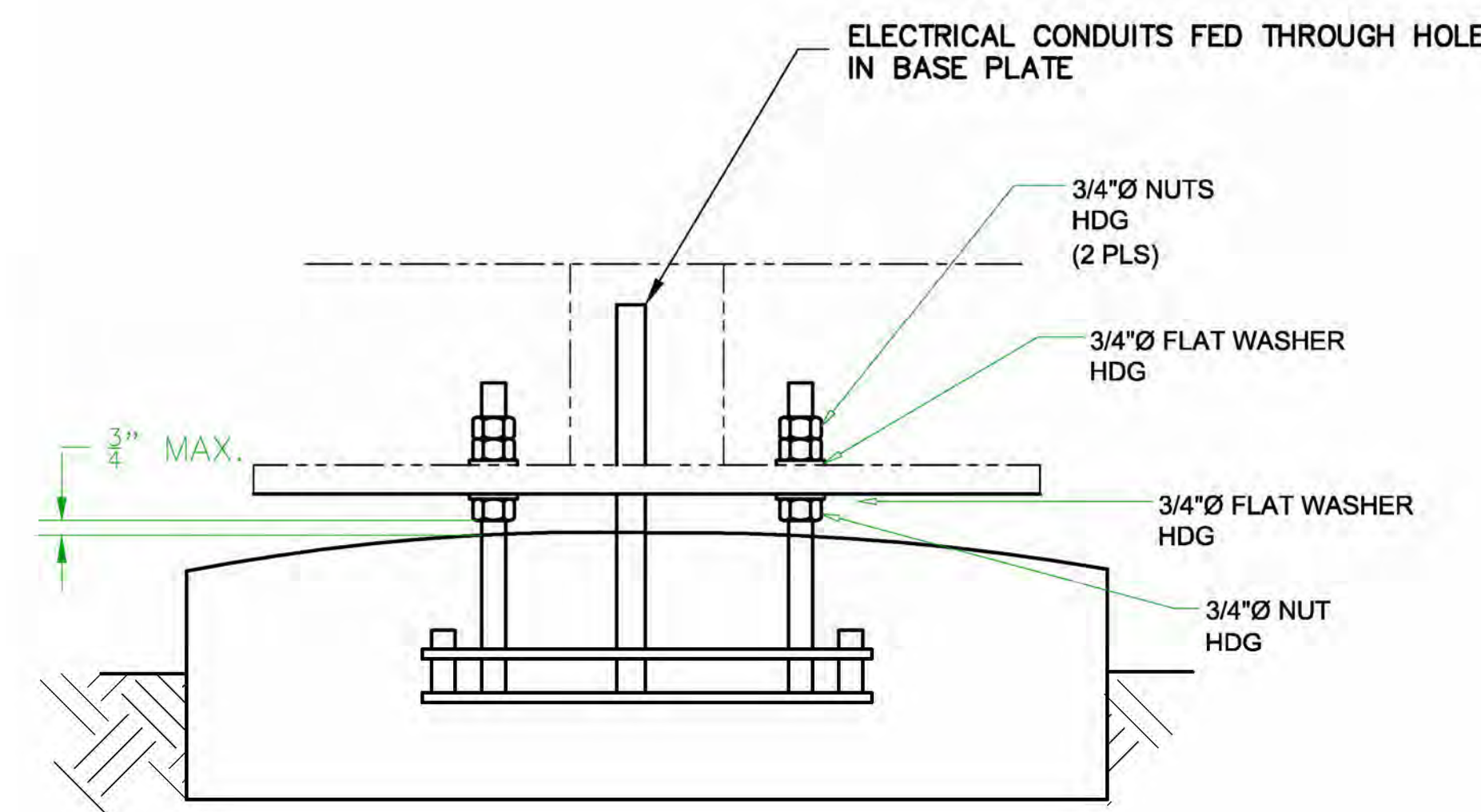
A FOUNDATION
NTS

- NOTES:
 -TOP OF PIERS SHALL BE SLOPED SUCH THAT MOISTURE CANNOT ACCUMULATE.
 -ANCHOR RODS, NUTS, AND WASHERS SHALL BE SHIPPED AS AN ASSEMBLY FROM THE SIGN/LIGHTING MANUFACTURER



B ANCHOR BOLT PATTERN
NTS

- NOTES:
 -TOP OF PIERS SHALL BE SLOPED SUCH THAT MOISTURE CANNOT ACCUMULATE.
 -ANCHOR RODS, NUTS, AND WASHERS SHALL BE SHIPPED AS AN ASSEMBLY FROM THE SIGN/LIGHTING MANUFACTURER
 -DO NOT CUT ANCHOR BOLTS AFTER INSTALLATION OF POLE



C CONNECTION DETAILS
NTS

GENERAL NOTES

- THE FOLLOWING CODES WERE USED IN DESIGN:
 -IBC 2015
 -ASCE 7-10
 -ACI 318-11
 -AISC 360-10
 -AWS D1.3
 -WIND SPEED 115 MPH (MPH 3-SEC GUST)
 -EXPOSURE C
 -DESIGN LOADS DERIVED FROM THESE CODES AND FORCES
 -AXIAL - 243#
 -SHEAR - 650#
 -MOMENT - 2,515#'

- ALL FOOTING EXCAVATIONS ARE TO BE CLEAR OF WATER AND FOREIGN MATTER BEFORE PLACING CONCRETE
 -MINIMUM ALLOWABLE LATERAL SOIL BEARING PRESSURE OF 100PSF/FT (x2)
 -SITE SOIL CONDITIONS TO BE CONFIRMED BY GEOTECHNICAL ENGINEER. IF ASSUMED SOIL CONDITIONS ARE NOT PRESENT, FOUNDATION SHALL BE DESIGNED BY A LICENSED STRUCTURAL ENGINEER TAKING INTO ACCOUNT ACTUAL SITE SOIL CONDITIONS.
 -TOP 6" OF SOIL NEGLECTED IN EMBEDMENT DEPTH CALCULATIONS (EMBEDMENT DEPTHS SHOWN ARE FROM GRADE)

- ELECTRICAL CONTRACTOR TO PROVIDE INFORMATION ON CONDUIT AND ELECTRICAL REQUIREMENTS.

CONCRETE:

- ALL FOOTINGS SHALL BEAR ON FIRM UNDISTURBED RESIDUAL SOIL AND/OR ENGINEERED EARTH FILL COMPACTED TO 98% OF ITS MAXIMUM DRY DENSITY AS PER ASTM D 698-70 (STANDARD PROCTOR) UNLESS NOTED OTHERWISE.
 -ALL PIERS TO EXTEND TO FROST DEPTH AS DETERMINED BY LOCAL JURISDICTION.
 -TOP OF PIERS SHALL BE SLOPED SUCH THAT MOISTURE CANNOT ACCUMULATE.
 -MINIMUM CONCRETE STRENGTH ($f'c=3,000$ PSI) SHALL CONFORM WITH MCDONALDS CAST-IN-PLACE CONCRETE SPECIFICATIONS SECTION 2.13-A
 -USE OF ADMIXTURES SHALL CONFORM TO MCDONALDS CAST-IN-PLACE CONCRETE SPECIFICATION SECTION 2.6
 -AIR ENTRAINMENT SHALL CONFORM WITH MCDONALDS CAST-IN-PLACE CONCRETE SPECIFICATION SECTIONS 2.6-A & 2.13-A
 -WATER CONTENT RATIO SHALL CONFORM TO MCDONALDS CAST-IN-PLACE CONCRETE SPECIFICATIONS SECTION 2.13-A
 -FOUNDATION CONCRETE TO BE TESTED PER MCDONALDS CAST-IN-PLACE CONCRETE SPECIFICATIONS SECTION 3.14
 -PROVIDE A MINIMUM 3" OF CONCRETE COVER OVER ALL EMBEDDED STEEL.
 -REINFORCEMENT PLACEMENT SHALL CONFORM TO MCDONALDS CAST-IN-PLACE CONCRETE SPECIFICATIONS SECTIONS 3.2 & 3.5. PERFORMED BY GENERAL CONTRACTOR.
 -ANCHOR RODS TO BE SET IN ACCORDANCE WITH AISC CODE OF STANDARD PRACTICE
 -DO NOT PLACE POLES ON CONCRETE UNTIL CONCRETE HAS CURED PER MCDONALDS CAST-IN-PLACE CONCRETE SPECIFICATION, SECTION 3.11-E.

STEEL:

- STEEL PIPE SECTION: ASTM A53 OR A252 TYPE E GRADE B ($F_y=35$ ksi)
 -HSS ROUND SECTION: ASTM A500 GRADE B ($F_y=42$ ksi)
 -HSS SQUARE/RECTANGULAR SECTIONS: ASTM A500 GRADE B ($F_y=46$ ksi)
 -HEADED ANCHOR RODS ASTM F1554 GR 55, AN ACCEPTABLE ALTERNATIVE IS ASTM F1554 GR 55, S1 WHEN THE EMBEDDED END OF THE ROD IS THREADED AND THE NUT TACK WELDED PRIOR TO GALVANIZATION.
 -STEEL ANGLES, CHANNELS, STRUCTURAL SHAPES AND PLATES: ASTM A36
 -REINFORCEMENT: ASTM A615 GRADE 60 - BY GENERAL CONTRACTOR
 -NUTS: ASTM A563A, HEAVY HEX
 -WASHERS: ASTM F844 A36
 -USE ASTM A153 CLASS C HOT DIPPED GALVANIZED BOLTS AND FASTENERS
 -ANCHOR RODS, NUTS, AND WASHERS SHALL BE SHIPPED AS AN ASSEMBLY FROM THE SIGN/LIGHTING MANUFACTURER
 -NO FIELD HEATING TO BEND STEEL SHALL BE ALLOWED WITHOUT ENGINEER'S APPROVAL.
 -DO NOT CUT ANCHOR RODS AFTER INSTALLATION OF POLE
 -AFTER INSTALLATION, ALL EXPOSED STEEL SHALL BE PAINTED WITH AN ENAMEL PAINT TO INHIBIT CORROSION.
 -ANY FIELD WELDING SHALL FIRST BE VERIFIED BY ENGINEER AND PERFORMED IN ACCORDANCE WITH AWS D1.1.

- REFER TO SIGN MANUFACTURER DRAWINGS AND INSTRUCTIONS FOR ADDITIONAL INFORMATION.

FOUNDATION NOTE

ATTENTION CONTRACTOR:
 VERIFY ALL SIGN FOUNDATIONS
 REQUIRED WITH SIGN PROVIDER

SHEET NO.	TITLE	DATE	BY	DESCRIPTION
SD4	STANDARD SITE DETAILS PRESSELL-BOARD-DETAIL	12-26-17	1	REV
				DATE
				DESCRIPTION

PREPARED BY: **Farnsworth Group**
 20 ALLEN AVENUE, SUITE 200
 ST. LOUIS, MISSOURI 63119
 (314) 962-7900 / (314) 962-1253 Fax
 www.f-w.com
 Farnsworth Group, Inc.
 Missouri State Certificate of Authority #001321

PREPARED FOR: **McDonald's USA, LLC**
 These drawings and specifications are the confidential and proprietary property of McDonald's USA, LLC and shall not be copied or reproduced without the written consent of McDonald's USA, LLC. Use of these drawings for use on a different site or at a later time, or for any other purpose, without the written consent of McDonald's USA, LLC, is prohibited. Reproduction of the contract documents for reuse on another project is not authorized.

DRAWN BY: FP
 STD_ISSUE_DATE: STDATE
 REVIEWED BY: [blank]
 DATE ISSUED: [blank]
 ISSUE_DATE: [blank]