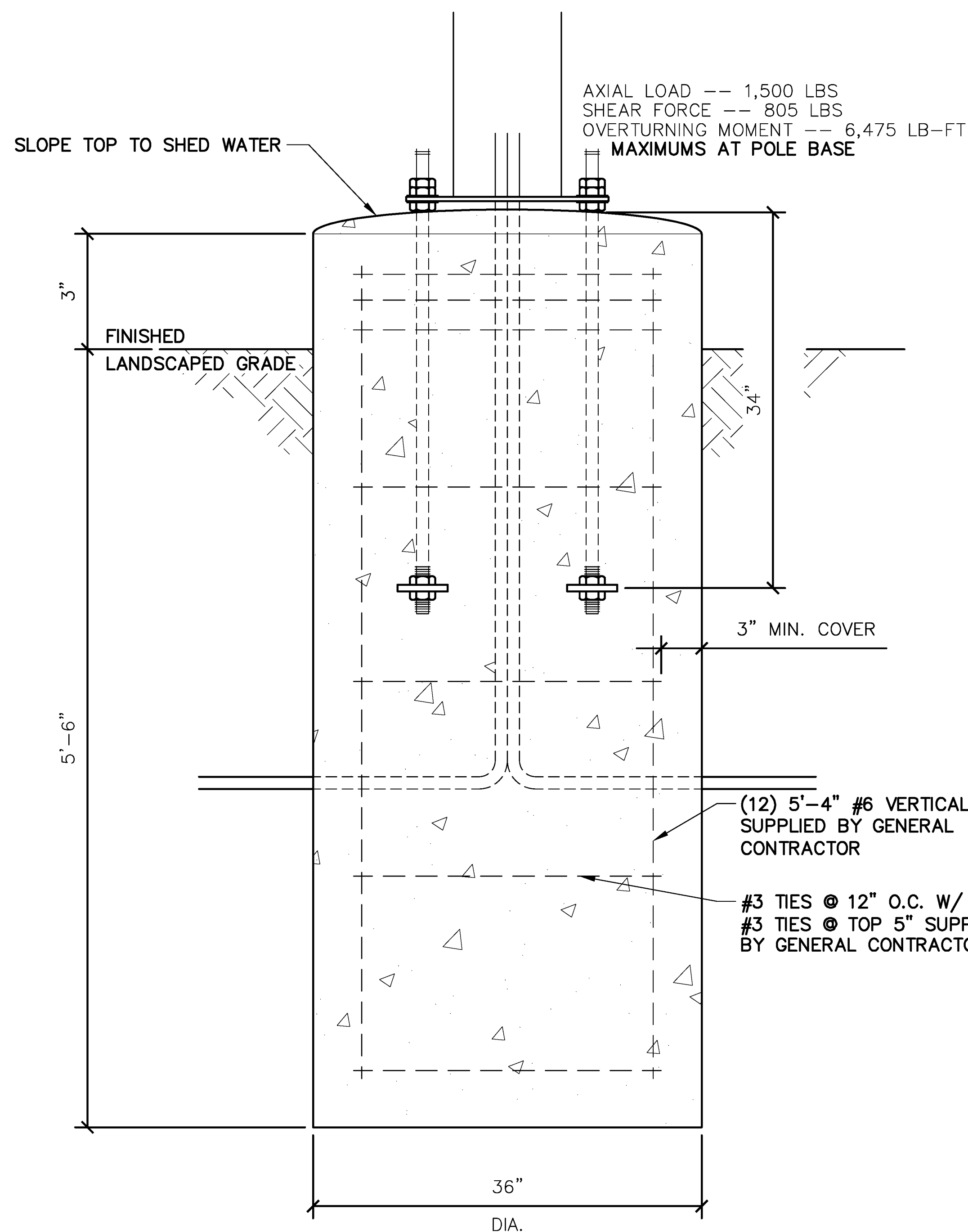


NOTE:

- DESIGN CODES
  - IBC 2015
  - ASCE 7-10
  - ACI 318-11
  - AISC 360-11
  - AWS D1.3
- WIND SPEED -- 115 MPH, 3 SEC GUST
  - EXPOSURE C
- DESIGN LOADS DERIVED FROM THESE CODES AND FORCES
  - AXIAL LOAD -- 960 LBS
  - SHEAR FORCE -- 700 LBS
  - OVERTURNING MOMENT -- 5500 LB-FT
- USE 3000 PSI CONCRETE COMPRESSIVE STRENGTH ( $f'_c$ )
- PIER DEPTHS REQUIRED ARE MINIMUMS. ALL PIERS TO EXTEND TO FROST DEPTH AS DETERMINED BY LOCAL JURISDICTION.
- TOP OF PIERS SHALL BE SLOPED SUCH THAT MOISTURE CANNOT ACCUMULATE.
- ELECTRICAL CONTRACTOR TO PROVIDE INFORMATION ON CONDUIT AND ELECTRICAL REQUIREMENTS.
- MINIMUM ALLOWABLE LATERAL SOIL BEARING PRESSURE 100 PSF/FT OF DEPTH x2.
- TOP 6" OF SOIL NEGLECTED IN EMBEDMENT DEPTH CALCULATIONS (EMBEDMENT DEPTHS SHOWN ARE FROM GRADE)
- 3" MIN. CONCRETE COVER FOR REINFORCEMENT

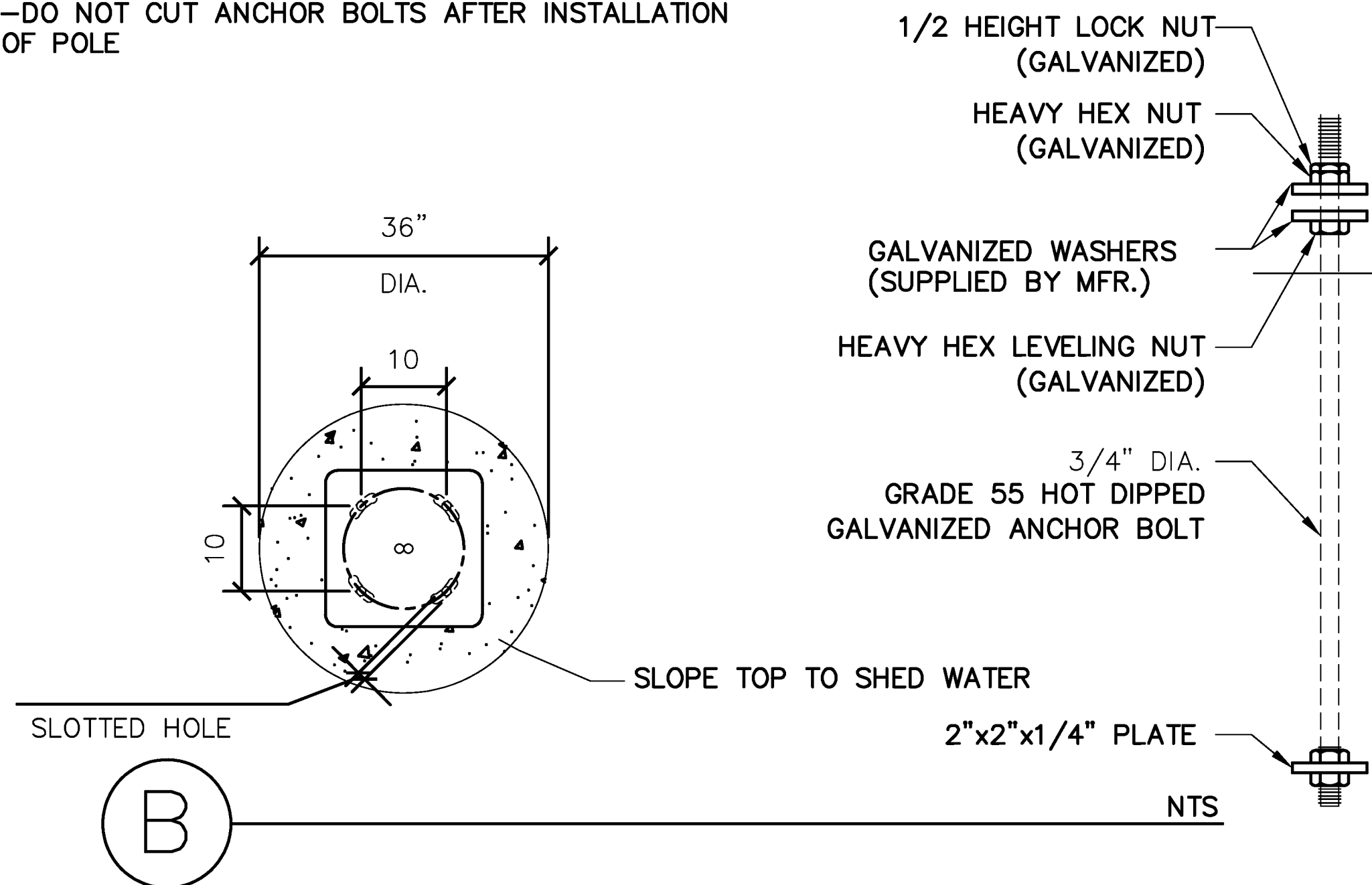


A GATEWAY

NTS

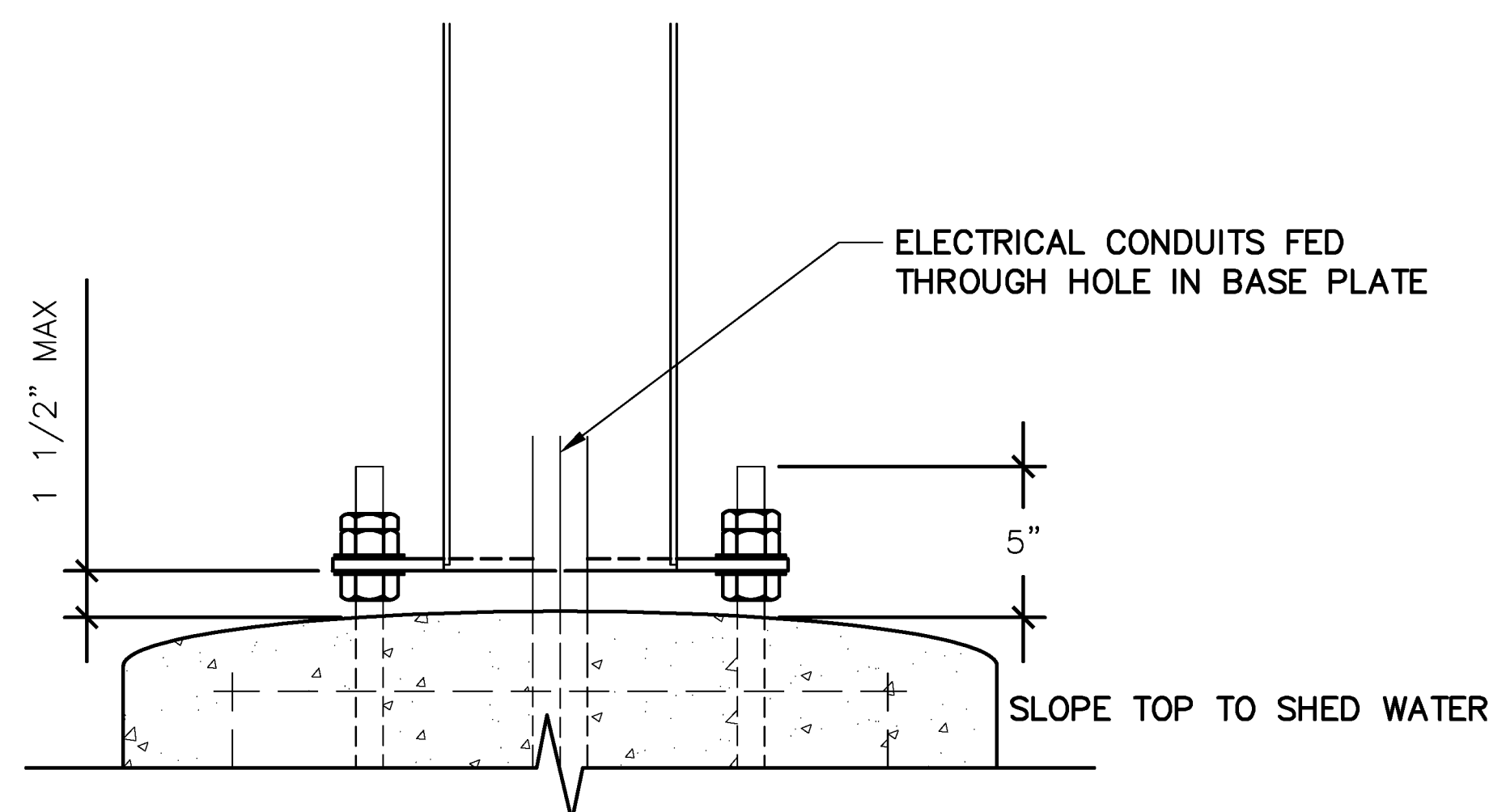
NOTES:

- TOP OF PIERS SHALL BE SLOPED SUCH THAT MOISTURE CANNOT ACCUMULATE.
- HOT DIPPED GALVANIZED BOLTS
- F1554 GRADE 36 ANCHOR BOLTS
- ANCHOR BOLTS TO BE SET IN ACCORDANCE WITH AISC CODE OF STANDARD PRACTICE
- ANCHOR RODS, NUTS, AND WASHERS SHALL BE SHIPPED AS AN ASSEMBLY FROM THE SIGN/LIGHTING MANUFACTURER
- DO NOT CUT ANCHOR BOLTS AFTER INSTALLATION OF POLE



NOTES:

- TOP OF PIERS SHALL BE SLOPED SUCH THAT MOISTURE CANNOT ACCUMULATE.
- ANCHOR RODS, NUTS, AND WASHERS SHALL BE SHIPPED AS AN ASSEMBLY FROM THE SIGN/LIGHTING MANUFACTURER
- DO NOT CUT ANCHOR BOLTS AFTER INSTALLATION OF POLE



# GENERAL NOTES

- THE FOLLOWING CODES WERE USED IN DESIGN:
  - IBC 2015
  - ASCE 7-10
  - ACI 318-11
  - AISC 360-11
  - AWS D1.3
  - WIND SPEED 115 MPH, 3 SEC GUST
  - EXPOSURE C
  - DESIGN LOADS DERIVED FROM THESE CODES AND FORCES
  - AXIAL -- 1,500 LBS
  - SHEAR -- 805 LBS
  - MOMENT -- 6,475 LB-FT

- ALL FOOTING EXCAVATIONS ARE TO BE CLEAR OF WATER AND FOREIGN MATTER BEFORE PLACING CONCRETE
- MINIMUM ALLOWABLE LATERAL SOIL BEARING PRESSURE OF 100PSF/FT (x2)
- SITE SOIL CONDITIONS TO BE CONFIRMED BY GEOTECHNICAL ENGINEER. IF ASSUMED SOIL CONDITIONS ARE NOT PRESENT, FOUNDATION SHALL BE DESIGNED BY A LICENSED STRUCTURAL ENGINEER TAKING INTO ACCOUNT ACTUAL SITE SOIL CONDITIONS.
- TOP 6" OF SOIL NEGLECTED IN EMBEDMENT DEPTH CALCULATIONS (EMBEDMENT DEPTHS SHOWN ARE FROM GRADE)

- ELECTRICAL CONTRACTOR TO PROVIDE INFORMATION ON CONDUIT AND ELECTRICAL REQUIREMENTS.

CONCRETE:

- ALL FOOTINGS SHALL BEAR ON FIRM UNDISTURBED RESIDUAL SOIL AND/OR ENGINEERED EARTH FILL COMPACTED TO 98% OF ITS MAXIMUM DRY DENSITY AS PER ASTM D 698-70 (STANDARD PROCTOR) UNLESS NOTED OTHERWISE.
- ALL PIERS TO EXTEND TO FROST DEPTH AS DETERMINED BY LOCAL JURISDICTION.
- TOP OF PIERS SHALL BE SLOPED SUCH THAT MOISTURE CANNOT ACCUMULATE.
- MINIMUM CONCRETE STRENGTH ( $f'_c$ ) SHOULD CONFORM WITH MCDONALDS CAST-IN-PLACE CONCRETE SPECIFICATIONS SECTION 2.13-A
- USE OF ADMIXTURES SHALL CONFORM TO MCDONALDS CAST-IN-PLACE CONCRETE SPECIFICATION SECTION 2.6
- AIR ENTRAINMENT SHALL CONFORM WITH MCDONALDS CAST-IN-PLACE CONCRETE SPECIFICATION SECTIONS 2.6-A & 2.13-A
- WATER CONTENT RATIO SHALL CONFORM TO MCDONALDS CAST-IN-PLACE CONCRETE SPECIFICATIONS SECTION 2.13-A
- FOUNDATION CONCRETE TO BE TESTED PER MCDONALDS CAST-IN-PLACE CONCRETE SPECIFICATIONS SECTION 3.14
- PROVIDE A MINIMUM 3" OF CONCRETE COVER OVER ALL EMBEDDED STEEL.
- REINFORCEMENT PLACEMENT SHALL CONFORM TO MCDONALDS CAST-IN-PLACE CONCRETE SPECIFICATIONS SECTIONS 3.2 & 3.5. PERFORMED BY GENERAL CONTRACTOR.
- ANCHOR BOLTS TO BE SET IN ACCORDANCE WITH AISC CODE OF STANDARD PRACTICE
- DO NOT PLACE POLES ON CONCRETE UNTIL CONCRETE HAS CURED PER MCDONALDS CAST-IN-PLACE CONCRETE SPECIFICATION, SECTION 3.11-E.

STEEL:

- STEEL PIPE SECTION: ASTM A53 OR A252 TYPE E GRADE B ( $F_y = 35\text{ksi}$ )
- HSS ROUND SECTION: ASTM A500 GRADE B ( $F_y = 42\text{ksi}$ )
- HSS SQUARE/RECTANGULAR SECTIONS: ASTM A500 GRADE B ( $F_y = 46\text{ksi}$ )
- CONNECTION BOLTS A325
- STEEL ANGLES, CHANNELS, STRUCTURAL SHAPES AND PLATES: ASTM A36
- REINFORCEMENT: GRADE 60 - BY GENERAL CONTRACTOR
- NUTS: A563DH OR A194-2H
- WASHERS: A36
- USE HOT DIPPED GALVANIZED BOLTS AND FASTENERS
- ANCHOR RODS, NUTS, AND WASHERS SHALL BE SHIPPED AS AN ASSEMBLY FROM THE SIGN/LIGHTING MANUFACTURER

SHEET NO.	TITLE	DRAWN BY	DATE	REV	DATE	DESCRIPTION	BY
SD6	STANDARD SITE DETAILS	FP	JAN 2013	1	12-28-17	city comments	

PREPARED FOR: M. McDonald's USA, LLC  
 PREPARED BY: Farnsworth Group, Inc.  
 20 ALLEN AVENUE, SUITE 200  
 ST LOUIS, MISSOURI 63119  
 (314) 962-7900 / (314) 962-1253 Fax  
 www.fw.com  
 Missouri State Certificate of Authority #001321

STATE OF MISSOURI  
 ROBERT E. FOX, JR. E-20082  
 ENGINEER  
 DATE: 12-28-17  
 THIS SHEET HAS BEEN SIGNED,  
 SEALED, AND DATED ELECTRONICALLY.